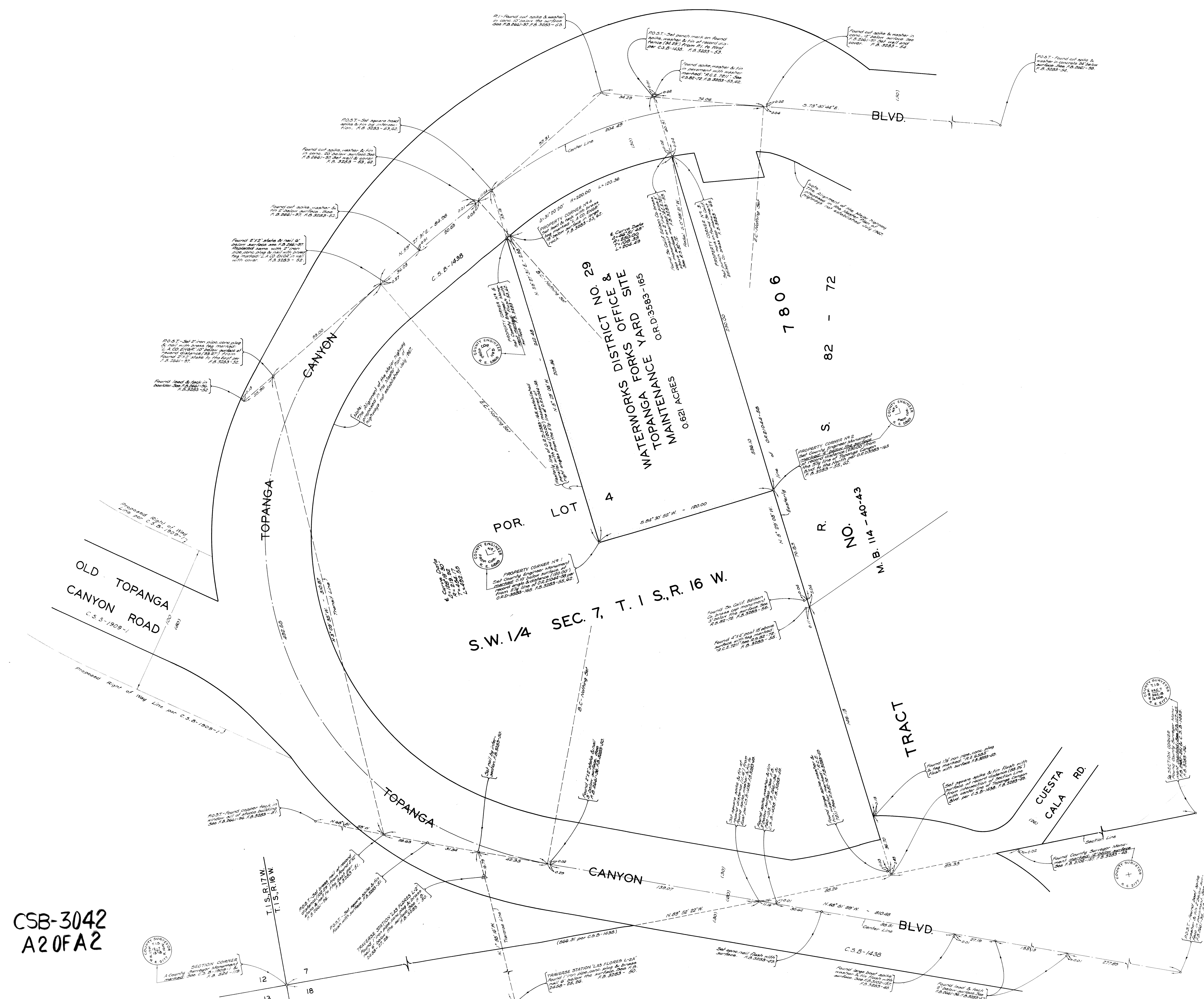


CSB-3042  
A20FA2



COUNTY OF LOS ANGELES  
MAP OF  
**WATERWORKS DISTRICT NO. 29  
TOPANGA FORKS OFFICE &  
MAINTENANCE YARD SITE**  
BEING A PORTION OF LOT 4 OF S.W.  
1/4 SECTION 7, T. 1 S., R. 16 W. S. B. M.  
COUNTY SURVEYOR'S MAP NO. B-3042  
SCALE: - 1 INCH = 20 FT.

JOB NUMBER 5295.91  
JOHN A. LAMBIE - COUNTY ENGINEER  
SURVEYED - FEBRUARY 1967  
SURVEYED ON REQUEST OF THE COUNTY  
ENGINEER UNDER SEC. 79, ORD. 4099  
BY LETTER DATED JANUARY 13, 1967.  
BEARINGS ARE BASED ON THE CALIFORNIA  
COORDINATE SYSTEM ZONE 7 PER SEC. 8809  
PUBLIC RESOURCES CODE. SEE C.S. 9423  
F. B. 3283-45-56  
FIELD WORK BY: L.V. SMITH  
OFFICE WORK BY: T.H. BURNS  
CHECKED BY: G.D. BAILEY  
Master Plan of Highways indicated July 1967, T.H.B.

NOTE:  
FOR TOPOGRAPHY PRIOR TO CONSTRUCTION  
SEE SURVEY DIVISION FILE MAP NO. P.T. H-140

JOHN A. LAMBIE  
COUNTY ENGINEER  
FILED June 14, 1967  
L.V. Tricker DEPUTY

CSB-3042  
A10FA2