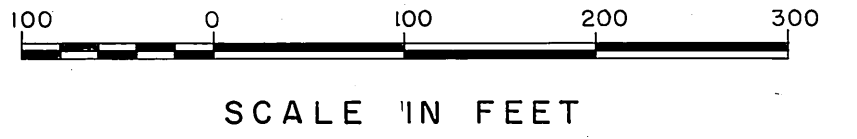


$\Delta = 35^{\circ} 21' 07''$
 $R = 2000.00'$
 $T = 637.36'$
 $L = 1234.02'$



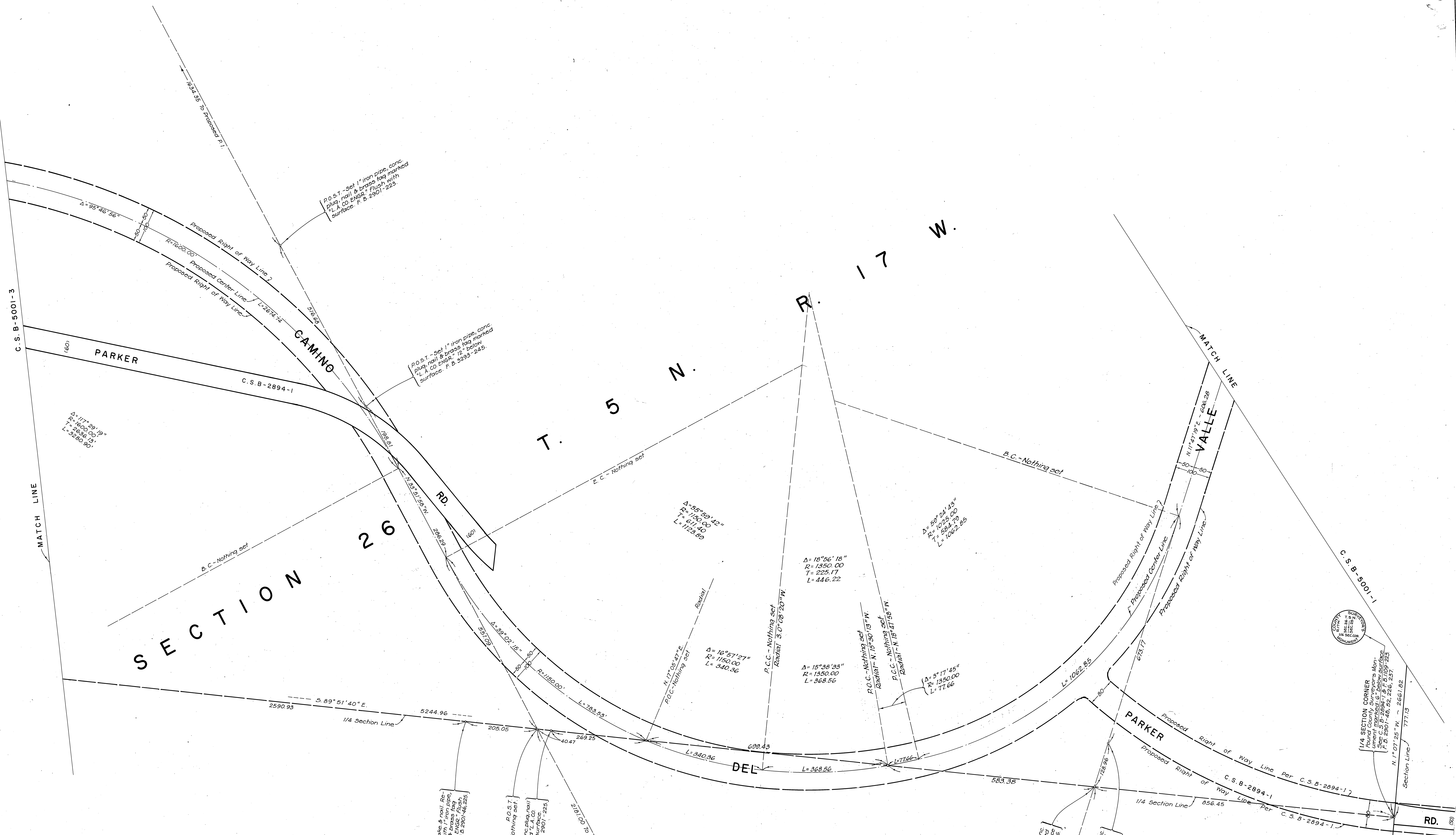
- REVISION**
- ① Portions of Lake Hughes Rd. changed to Ridge Route & Neely St. per S.N.C. No. 514.
 - ② Proposed highway with corrected between Ridge Route & Castaic Rd. and added highway note. For The Old Road.
 - ③ Proposed Right of Way Line of The Old Rd. per C.S.B-5280-3 added record information updated, distance along Camino Del Valle changed to 606.82'.
 - ④ Camino Del Valle changed to Sloan Cyn. Road per S.N.C. No. 707-1

VICINITY MAP
 NOT TO SCALE

COUNTY OF LOS ANGELES
 DEPARTMENT OF
 COUNTY ENGINEER
 JOHN A. LAMBIE-COUNTY ENGINEER
 PREPARED BY
 SURVEY DIVISION
 C.E. BRUNTY-DIVISION ENGINEER
 SURVEYED BY J. P. MENNE
 J. V. TERRANOVA
 CHECKED BY W.A. EDMONDSON
 DRAWN BY M. HAMASU

ALIGNMENT MAP OF
CAMINO DEL VALLE
 FROM
 RIDGE ROUTE
 TO
HASLEY CANYON ROAD
 BASIS OF BEARINGS
 THE BEARING OF THE W'LY SECTION LINE OF
 SECTION 26, T. 5 N., R. 17 W. PER C.S.B-2894-1.

COUNTY SURVEYOR'S MAP NO. B-5001		NO. BY DATE
SHEET 1 OF 6 SHEETS		① G.H.B. 5-14-70
FILED <i>George Brumby</i>		② H.H.F.D. 6-20-71
SURVEYED OCT. TO DEC. 1967		③ J.C.M. 6-13-77
REFERENCE F.B. 2901 F.B. 3293		
JOB NUMBER 0097.61	INDEX MAP NO. 17, 63, 77	



- REVISION**
- ① Lake Hughes Rd. changed to Ridge Route per S.N.C. No. 514.
 - ② The Private Street (Parker Road) in Section 26, T.5N, R.17W, deleted by J.C. March 1972.
 - ③ Alignment in the vicinity of Proposed Parker Rd. revised. See I.E.C. Min. 3-7-74.
 - ④ Parker Road changed to Sloan Canyon Road per S.N.C. No. 707-2.
 - ⑤ Camino Del Valle changed to Sloan Canyon Road per S.N.C. No. 707-1.

Found 1/2" x 2" stakes & nail. Re-established 1" iron pipe, conc. plug, nail & brass tag marked surface. F.B. 2901-46, 295.

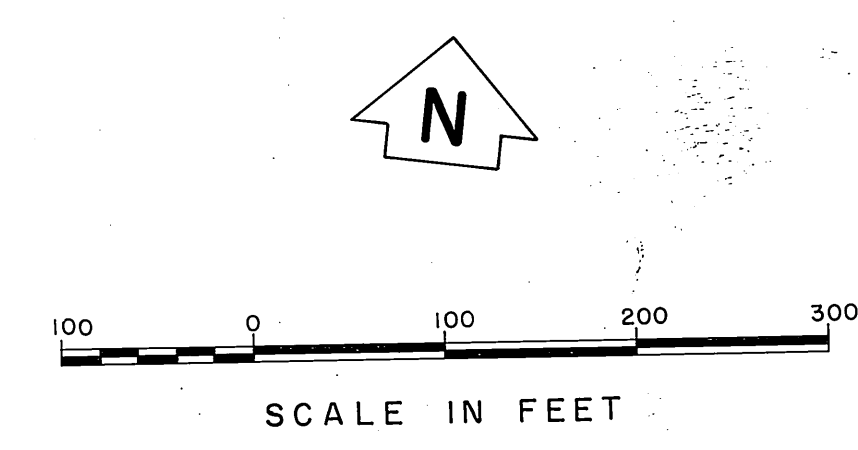
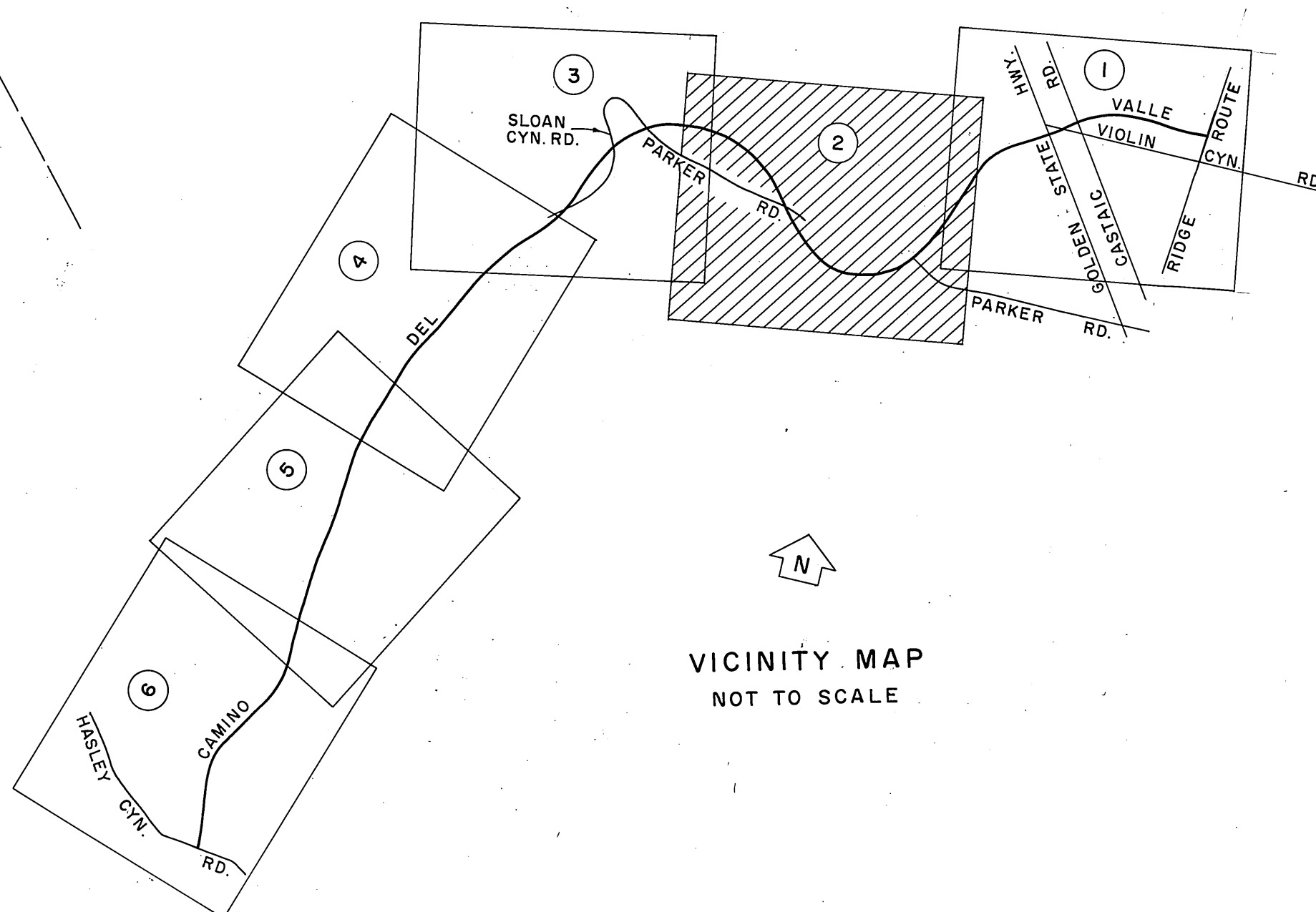
P.O.S.T. - Set 1" iron pipe, conc. plug, nail & brass tag marked surface. F.B. 2901-225.

Set 1" iron pipe, conc. plug, nail & brass tag marked surface. F.B. 2901-225.

Nothing set.

Nothing set.

Nothing set.



COUNTY OF LOS ANGELES DEPARTMENT OF COUNTY ENGINEER JOHN A. LAMBIE-COUNTY ENGINEER PREPARED BY SURVEY DIVISION C.E. BRUNTY-DIVISION ENGINEER SURVEYED BY J. P. MENNE SURVEYED BY J. TERRANOVA CHECKED BY W.A. EDMONDSON DRAWN BY M. HAMASU	ALIGNMENT MAP OF CAMINO DEL VALLE FROM RIDGE ROUTE TO HASLEY CANYON ROAD		COUNTY SURVEYOR'S MAP NO. B-5001 SHEET 2 OF 6 SHEETS FILED 6-7-1967 SURVEYED OCT. TO DEC. 1967 REFERENCE F.B. 2901 F.B. 3293 JOB NUMBER 0097.61 INDEX MAP NO. 17, 63, 77	REVISION NO. BY DATE ① E.H.B. 5-14-70 ② J.L.C. 3-28-73 ③ M.H. 4-18-74
	BASIS OF BEARINGS THE BEARING OF THE W'LY SECTION LINE OF SECTION 26, T. 5 N., R. 17 W. PER C.S.B-2894-1.			

SECTION 27

T. 5 N., R. 17 W.

SECTION 26

T. 5 N., R. 17 W.

C.S.B-5001-2

MATCH LINE

MATCH LINE

C.S.B-5001-4

SECTION CORNER
Found County Surveyors Monument marked as per C.S.B-2894-1, F.B.2901-42.

1/16 SECTION CORNER
Set County Engineer's Monument marked 1/16" above surface at midpoint between Section Corner to the North & 1/4 Section Corner to the South. See C.S.B-2894-1, F.B.2901-41, 56.
P.O.S.T. - Established by intersection. Nothing set.

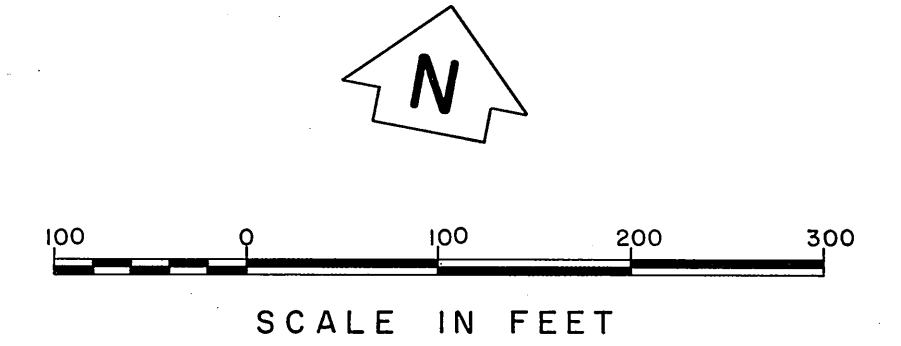
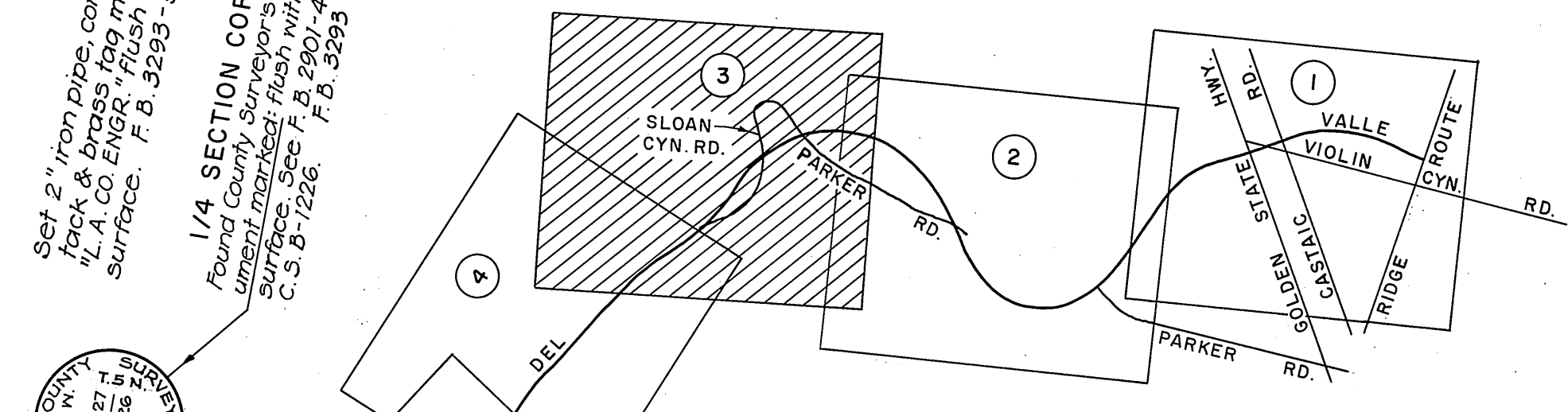
P.O.S.T. - Set 2" iron pipe, conc. plug, tack & brass tag marked "L.A. CO. ENGR." flush with surface. F.B.3293-244.

1/16 SECTION CORNER
Set County Engineer's Monument marked 1/16" above surface at midpoint between Section Corner to the North & 1/4 Section Corner to the South. See C.S.B-2894-1, F.B.2901-41, 56.
P.O.S.T. - Established by intersection. Nothing set.

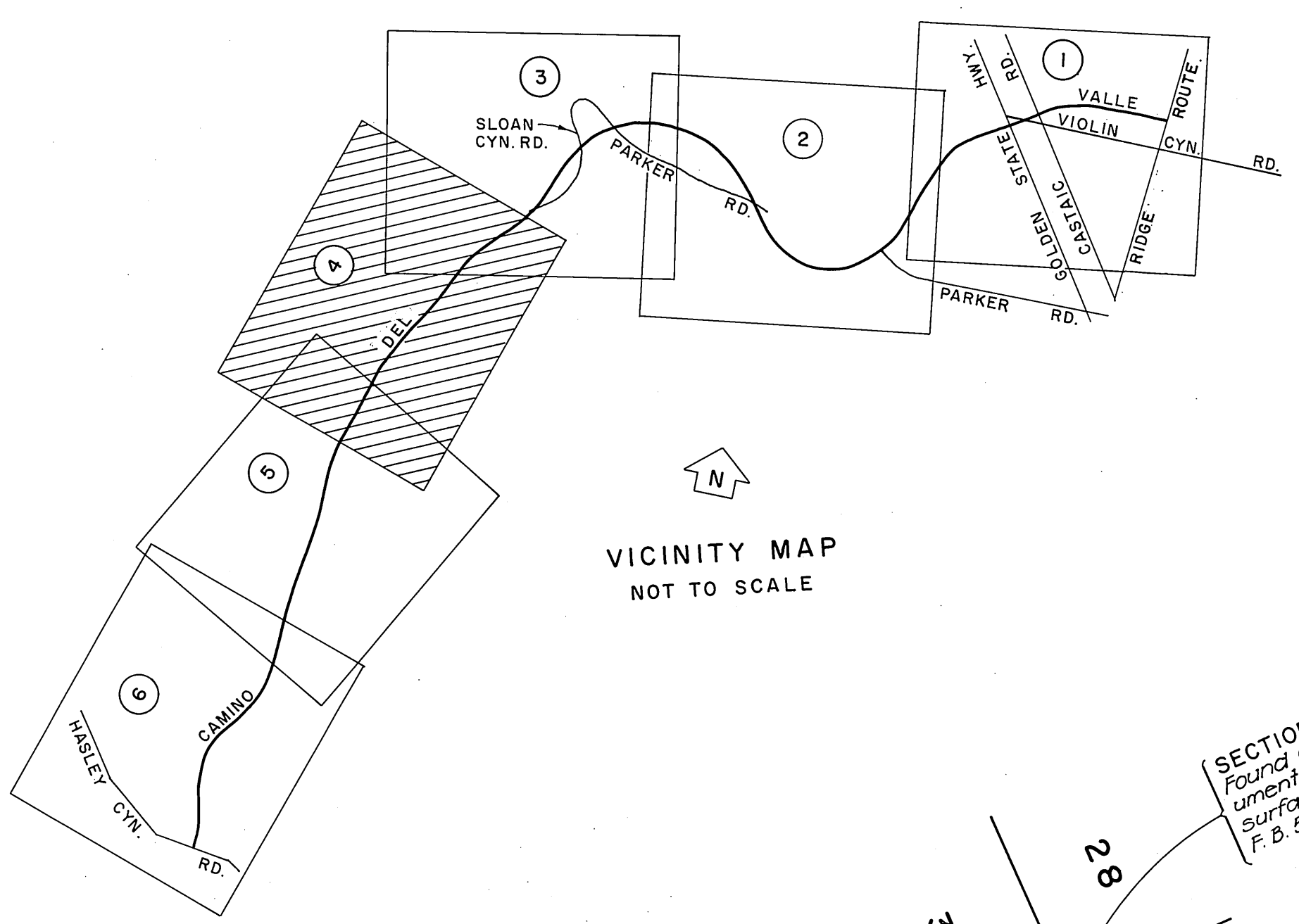
Set 1/4" iron pipe, conc. plug, tack & brass tag marked "L.A. CO. ENGR." flush with surface. F.B.3293-241.

Set 2" iron pipe, conc. plug, tack & brass tag marked "L.A. CO. ENGR." flush with surface. F.B.3293-241, 242, 243, 244, 245, 246, 247, 248, 249, 250, 251, 252, 253, 254, 255, 256, 257, 258, 259, 260, 261, 262, 263, 264, 265, 266, 267, 268, 269, 270, 271, 272, 273, 274, 275, 276, 277, 278, 279, 280, 281, 282, 283, 284, 285, 286, 287, 288, 289, 290, 291, 292, 293, 294, 295, 296, 297, 298, 299, 300, 301, 302, 303, 304, 305, 306, 307, 308, 309, 310, 311, 312, 313, 314, 315, 316, 317, 318, 319, 320, 321, 322, 323, 324, 325, 326, 327, 328, 329, 330, 331, 332, 333, 334, 335, 336, 337, 338, 339, 340, 341, 342, 343, 344, 345, 346, 347, 348, 349, 350, 351, 352, 353, 354, 355, 356, 357, 358, 359, 360, 361, 362, 363, 364, 365, 366, 367, 368, 369, 370, 371, 372, 373, 374, 375, 376, 377, 378, 379, 380, 381, 382, 383, 384, 385, 386, 387, 388, 389, 390, 391, 392, 393, 394, 395, 396, 397, 398, 399, 400, 401, 402, 403, 404, 405, 406, 407, 408, 409, 410, 411, 412, 413, 414, 415, 416, 417, 418, 419, 420, 421, 422, 423, 424, 425, 426, 427, 428, 429, 430, 431, 432, 433, 434, 435, 436, 437, 438, 439, 440, 441, 442, 443, 444, 445, 446, 447, 448, 449, 450, 451, 452, 453, 454, 455, 456, 457, 458, 459, 460, 461, 462, 463, 464, 465, 466, 467, 468, 469, 470, 471, 472, 473, 474, 475, 476, 477, 478, 479, 480, 481, 482, 483, 484, 485, 486, 487, 488, 489, 490, 491, 492, 493, 494, 495, 496, 497, 498, 499, 500, 501, 502, 503, 504, 505, 506, 507, 508, 509, 510, 511, 512, 513, 514, 515, 516, 517, 518, 519, 520, 521, 522, 523, 524, 525, 526, 527, 528, 529, 530, 531, 532, 533, 534, 535, 536, 537, 538, 539, 540, 541, 542, 543, 544, 545, 546, 547, 548, 549, 550, 551, 552, 553, 554, 555, 556, 557, 558, 559, 560, 561, 562, 563, 564, 565, 566, 567, 568, 569, 570, 571, 572, 573, 574, 575, 576, 577, 578, 579, 580, 581, 582, 583, 584, 585, 586, 587, 588, 589, 590, 591, 592, 593, 594, 595, 596, 597, 598, 599, 600, 601, 602, 603, 604, 605, 606, 607, 608, 609, 610, 611, 612, 613, 614, 615, 616, 617, 618, 619, 620, 621, 622, 623, 624, 625, 626, 627, 628, 629, 630, 631, 632, 633, 634, 635, 636, 637, 638, 639, 640, 641, 642, 643, 644, 645, 646, 647, 648, 649, 650, 651, 652, 653, 654, 655, 656, 657, 658, 659, 660, 661, 662, 663, 664, 665, 666, 667, 668, 669, 670, 671, 672, 673, 674, 675, 676, 677, 678, 679, 680, 681, 682, 683, 684, 685, 686, 687, 688, 689, 690, 691, 692, 693, 694, 695, 696, 697, 698, 699, 700, 701, 702, 703, 704, 705, 706, 707, 708, 709, 710, 711, 712, 713, 714, 715, 716, 717, 718, 719, 720, 721, 722, 723, 724, 725, 726, 727, 728, 729, 730, 731, 732, 733, 734, 735, 736, 737, 738, 739, 740, 741, 742, 743, 744, 745, 746, 747, 748, 749, 750, 751, 752, 753, 754, 755, 756, 757, 758, 759, 760, 761, 762, 763, 764, 765, 766, 767, 768, 769, 770, 771, 772, 773, 774, 775, 776, 777, 778, 779, 780, 781, 782, 783, 784, 785, 786, 787, 788, 789, 790, 791, 792, 793, 794, 795, 796, 797, 798, 799, 800, 801, 802, 803, 804, 805, 806, 807, 808, 809, 810, 811, 812, 813, 814, 815, 816, 817, 818, 819, 820, 821, 822, 823, 824, 825, 826, 827, 828, 829, 830, 831, 832, 833, 834, 835, 836, 837, 838, 839, 840, 841, 842, 843, 844, 845, 846, 847, 848, 849, 850, 851, 852, 853, 854, 855, 856, 857, 858, 859, 860, 861, 862, 863, 864, 865, 866, 867, 868, 869, 870, 871, 872, 873, 874, 875, 876, 877, 878, 879, 880, 881, 882, 883, 884, 885, 886, 887, 888, 889, 890, 891, 892, 893, 894, 895, 896, 897, 898, 899, 900, 901, 902, 903, 904, 905, 906, 907, 908, 909, 910, 911, 912, 913, 914, 915, 916, 917, 918, 919, 920, 921, 922, 923, 924, 925, 926, 927, 928, 929, 930, 931, 932, 933, 934, 935, 936, 937, 938, 939, 940, 941, 942, 943, 944, 945, 946, 947, 948, 949, 950, 951, 952, 953, 954, 955, 956, 957, 958, 959, 960, 961, 962, 963, 964, 965, 966, 967, 968, 969, 970, 971, 972, 973, 974, 975, 976, 977, 978, 979, 980, 981, 982, 983, 984, 985, 986, 987, 988, 989, 990, 991, 992, 993, 994, 995, 996, 997, 998, 999, 1000.

- REVISION
- ① Lake Hughes Road changed to Ridge Route per S.N.C. No. 514.
 - ② Parker Road changed to Sloan Cyn. Road per S.N.C. No. 707-2.



COUNTY OF LOS ANGELES DEPARTMENT OF COUNTY ENGINEER JOHN A. LAMBIE-COUNTY ENGINEER PREPARED BY SURVEY DIVISION C. E. BRUNTY-DIVISION ENGINEER J. F. MENNE SURVEYED BY J. TERRANOVA CHECKED BY W. A. EDMONDSON DRAWN BY M. HAMASU	ALIGNMENT MAP OF CAMINO DEL VALLE FROM RIDGE ROUTE TO HASLEY CANYON ROAD		COUNTY SURVEYOR'S MAP NO. B-5001	REVISION NO. BY DATE ① G.H.B. 8-14-70	
	SHEET 3 OF 6 SHEETS FILED 6-2-1968 <i>George J. Conner</i> DEPUTY SURVEYED OCT. TO DEC. 1967		REFERENCE F. B. 2901 F. B. 3293		
	BASIS OF BEARINGS THE BEARING OF THE W'LY SECTION LINE OF SECTION 26, T. 5 N., R. 17 W. PER C.S.B-2894-1.		JOB NUMBER 0097.61	INDEX MAP NO. 17,63,77	



T. 5 N., R. 17 W.

SECTION 27

T. 5 N., R. 17 W.

SECTION 34

C.S.B-5001-5

C.S.B-5001-3

Set 1" x 2" stake & nail by intersection of F.B. 3295-234 & F.B. 3295-236. Set 2" iron pipe, conc. plug, mark & brass tag marked with L.A. CO. ENGR. F.B. 3295-234.

N 11° 21' 20" E 653.64 361.51

MATCH LINE

CAMINO DEL VALLE

Proposed Right of Way Line
N 34° 11' 20" E 843.26
Proposed Center Line
Proposed Right of Way Line

N 28° 38' 43" E 2081.96
926.27

MATCH LINE

- REVISION
- ① Lake Hughes Rd. changed to Ridge Route per S.N.C. No. 514.
 - ② Camino Del Valle changed to Sloan Cyn. Rd. per S.N.C. No. 707-3.

E.C. - Set 1" iron pipe, conc. plug, mark & brass tag marked with L.A. CO. ENGR. F.B. 3295-235 with surface.

Δ = 9° 31' 02" R = 1500.00' L = 249.16'

Δ = 13° 18' 58" R = 1500.00' L = 348.62'

Δ = 23° 50' 00" R = 1500.00' L = 597.78'

S 69° 07' 58" E - Radial P.O.C. - Nothing set

POST - Set 1" x 2" stake & nail by intersection. F.B. 3295-236. P.I. No. 106 Set 2" iron pipe, conc. plug, mark & brass tag marked with L.A. CO. ENGR. F.B. 3295-236 with surface.

E.C. - Set 1" iron pipe, conc. plug, mark & brass tag marked with L.A. CO. ENGR. F.B. 3295-237 with surface.

POST - Set 1" iron pipe, conc. plug, mark & brass tag marked with L.A. CO. ENGR. F.B. 3295-238 with surface.

Set 2" iron pipe, P.I. No. 105 mark & brass tag marked with L.A. CO. ENGR. F.B. 3295-238 with surface.

POST - Set 1" iron pipe, conc. plug, mark & brass tag marked with L.A. CO. ENGR. F.B. 3295-238 with surface.

SECTION CORNER Round County Surveyors Monument marked at above surface. Upland monument set by F.B. 3295-240, F.B. 3295-240, F.B. 3295-243.

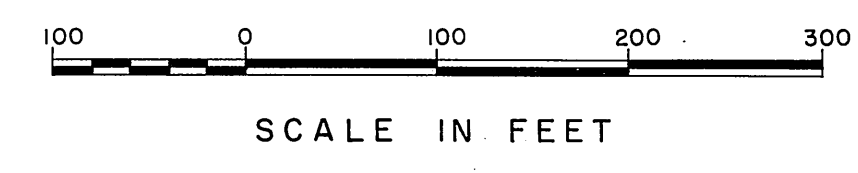
1/4 SECTION CORNER Round County Surveyors Monument marked at above surface. Upland monument set by F.B. 3295-236, F.B. 3295-236, F.B. 3295-236.

1/16 SECTION CORNER Set County Engineers Monument marked at above surface. Upland monument set by F.B. 3295-50, F.B. 3295-50, F.B. 3295-50.

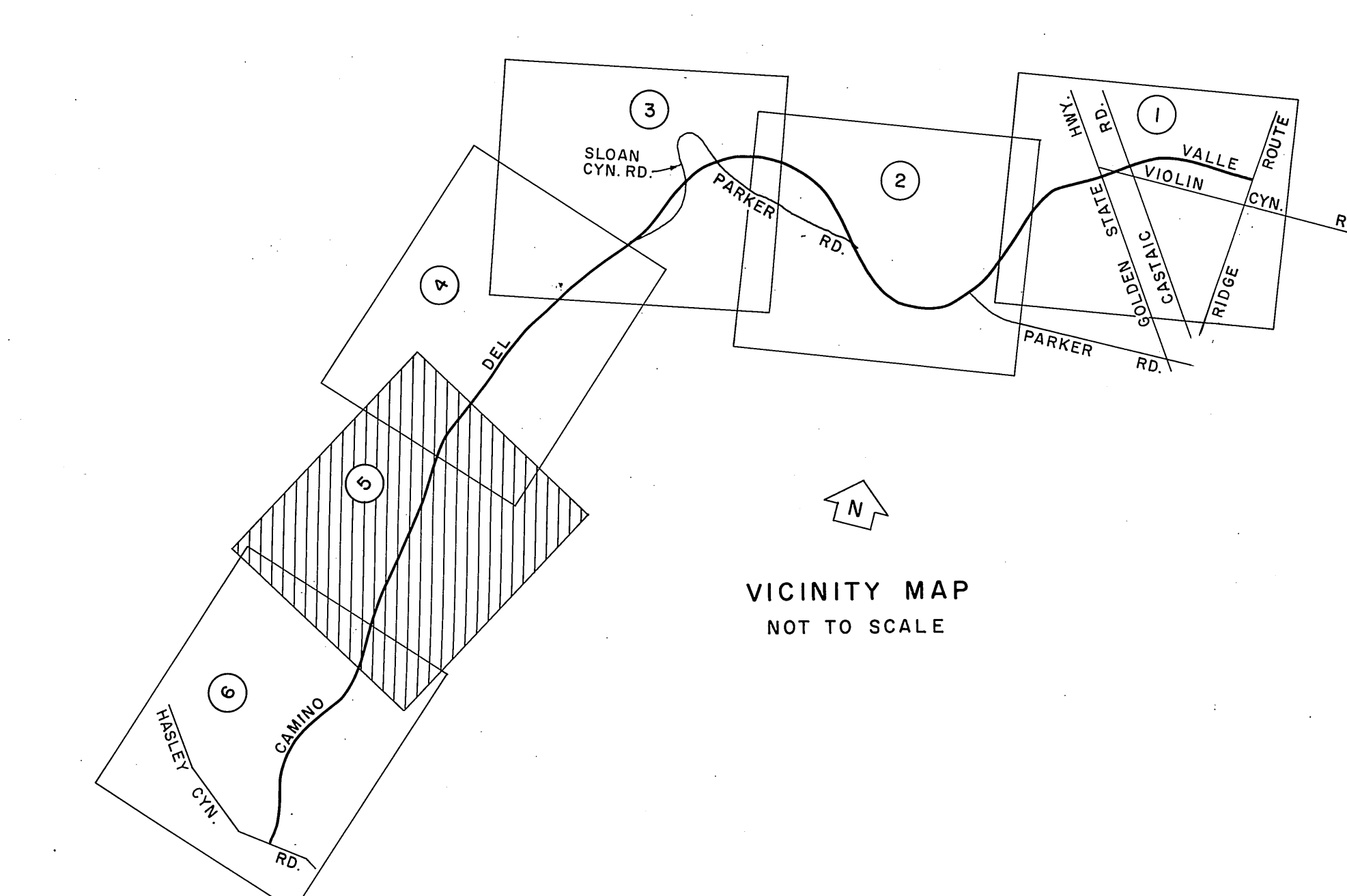
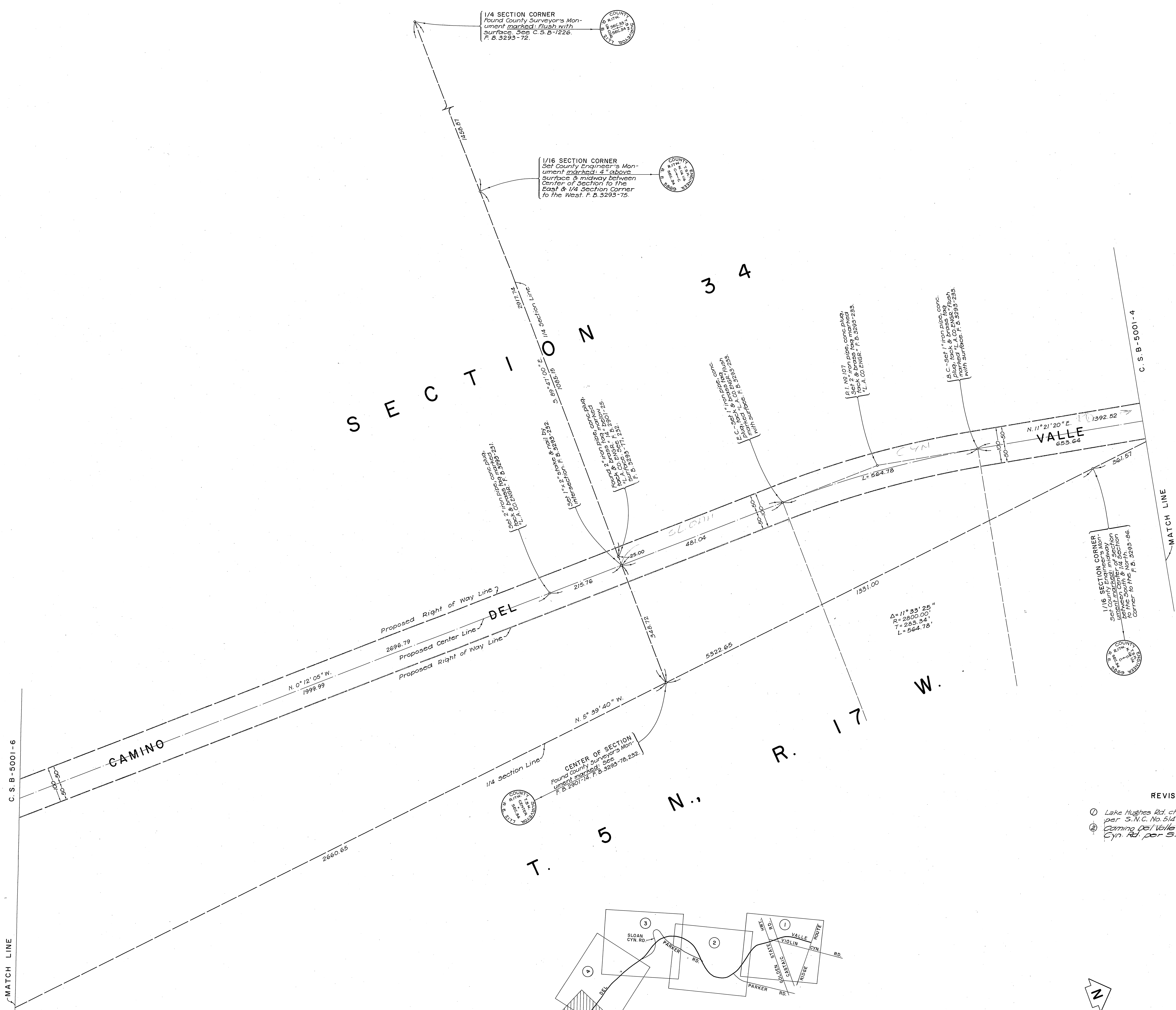
1/4 SECTION CORNER Round County Surveyors Monument marked at above surface. Upland monument set by F.B. 3295-47, F.B. 3295-47, F.B. 3295-47.

1/4 SECTION CORNER Round County Surveyors Monument marked at above surface. Upland monument set by F.B. 3295-52, F.B. 3295-52, F.B. 3295-52.

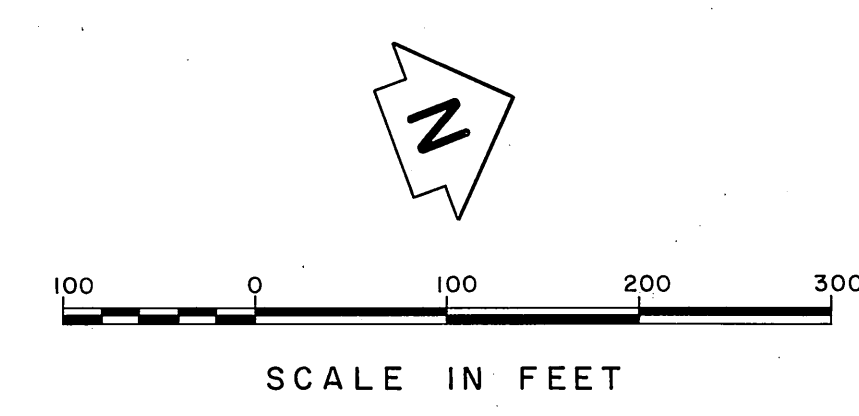
SECTION CORNER Round County Surveyors Monument marked at above surface. Upland monument set by F.B. 2901-50, F.B. 2901-50, F.B. 2901-50.



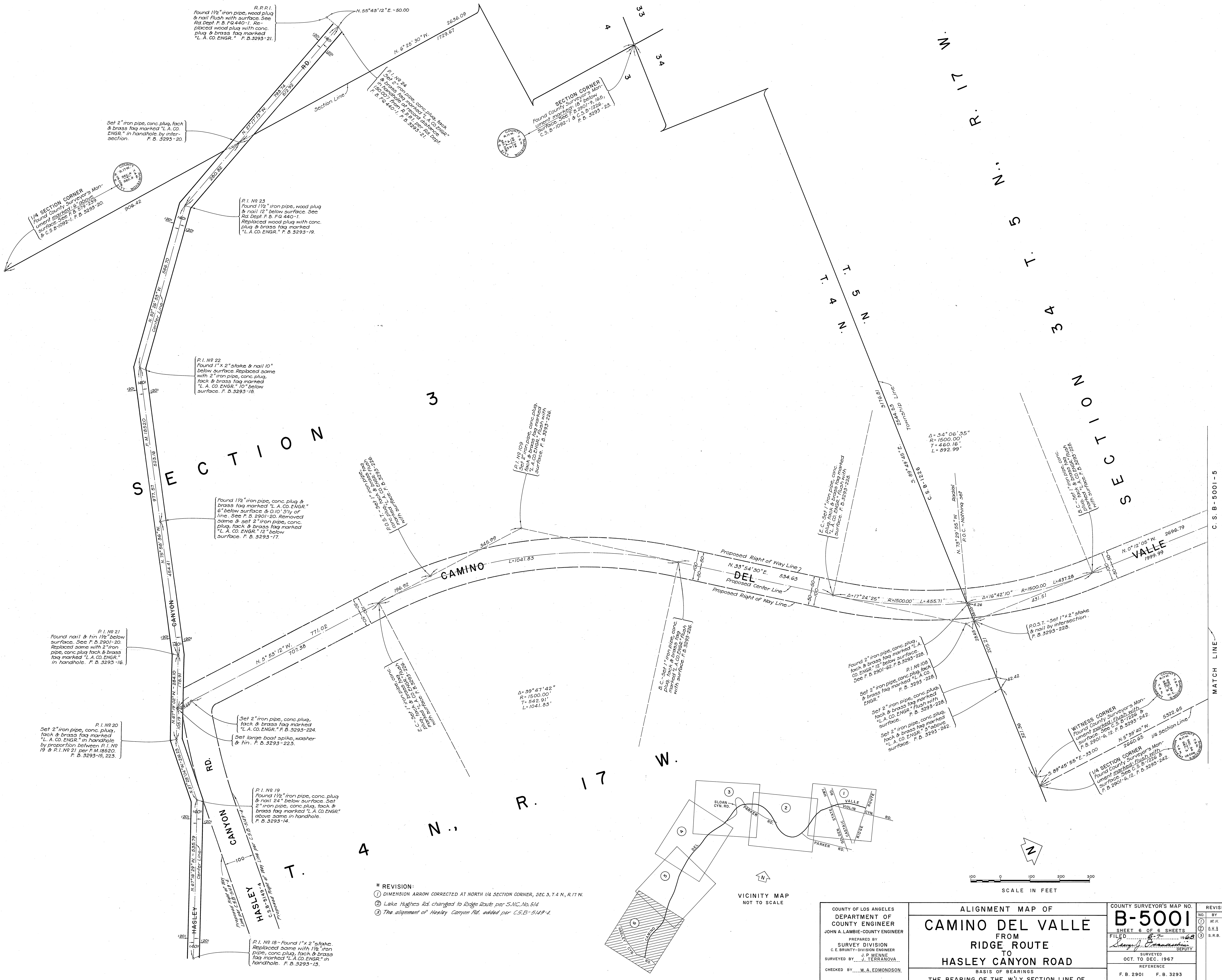
COUNTY OF LOS ANGELES DEPARTMENT OF COUNTY ENGINEER JOHN A. LAMBIE-COUNTY ENGINEER PREPARED BY SURVEY DIVISION C.E. BRUNTY-DIVISION ENGINEER J. P. MENNE SURVEYED BY J. TERRANOVA CHECKED BY W. A. EDMONDSON DRAWN BY M. HAMASU	ALIGNMENT MAP OF CAMINO DEL VALLE FROM RIDGE ROUTE TO HASLEY CANYON ROAD BASIS OF BEARINGS THE BEARING OF THE W'LY SECTION LINE OF SECTION 26, T. 5 N., R. 17 W. PER C.S.B-2894-1.	COUNTY SURVEYOR'S MAP NO. B-5001 SHEET 4 OF 6 SHEETS FILED 6-7-1968 <i>George J. Brannan</i> DEPUTY	REVISION NO. BY DATE ① G.H.B. 8-14-78
		SURVEYED OCT. TO DEC. 1967 REFERENCE F. B. 2901 F. B. 3293 JOB NUMBER 0097.61 INDEX MAP NO. 17, 63, 77	



- REVISION
- ① Lake Hughes Rd. changed to Ridge Route per S.N.C. No. 514
 - ② Camino Del Valle changed to Sloon Cyn Rd. per S.N.C. No. 707-3.



COUNTY OF LOS ANGELES DEPARTMENT OF COUNTY ENGINEER JOHN A. LAMBIE-COUNTY ENGINEER PREPARED BY SURVEY DIVISION C. E. BRUNTY-DIVISION ENGINEER SURVEYED BY J. P. MENNE J. TERRANOVA CHECKED BY W. A. EDMONDSON DRAWN BY M. HAMASU	ALIGNMENT MAP OF CAMINO DEL VALLE FROM RIDGE ROUTE TO HASLEY CANYON ROAD BASIS OF BEARINGS THE BEARING OF THE W'LY SECTION LINE OF SECTION 26, T. 5 N., R. 17 W. PER C.S.B-2894-1.	COUNTY SURVEYOR'S MAP NO. B-5001	REVISION NO. BY DATE ① G.H.B. 8-14-70
		SHEET 5 OF 6 SHEETS FILED 6-7-1968 SURVEYED OCT. TO DEC. 1967 REFERENCE F. B. 2901 F. B. 3293 JOB NUMBER 0097.61 INDEX MAP NO. 17, 63, 77	



R.P.P. 1
Found 1 1/2" iron pipe, wood plug & nail flush with surface. See Rd Dept. F. B. 3293-21. Replaced wood plug with conc. plug & brass tag marked "L.A. CO. ENGR." F. B. 3293-21.

SECTION CORNER
Found County Surveyor's Monument marked "L.A. CO. ENGR." F. B. 3293-23. Surface set 18" below from P.P. 1, 2, 3, 4, 5, 6, 7, 8, 9, 10, 11, 12, 13, 14, 15, 16, 17, 18, 19, 20, 21, 22, 23, 24, 25, 26, 27, 28, 29, 30, 31, 32, 33, 34, 35, 36, 37, 38, 39, 40, 41, 42, 43, 44, 45, 46, 47, 48, 49, 50, 51, 52, 53, 54, 55, 56, 57, 58, 59, 60, 61, 62, 63, 64, 65, 66, 67, 68, 69, 70, 71, 72, 73, 74, 75, 76, 77, 78, 79, 80, 81, 82, 83, 84, 85, 86, 87, 88, 89, 90, 91, 92, 93, 94, 95, 96, 97, 98, 99, 100, 101, 102, 103, 104, 105, 106, 107, 108, 109, 110, 111, 112, 113, 114, 115, 116, 117, 118, 119, 120, 121, 122, 123, 124, 125, 126, 127, 128, 129, 130, 131, 132, 133, 134, 135, 136, 137, 138, 139, 140, 141, 142, 143, 144, 145, 146, 147, 148, 149, 150, 151, 152, 153, 154, 155, 156, 157, 158, 159, 160, 161, 162, 163, 164, 165, 166, 167, 168, 169, 170, 171, 172, 173, 174, 175, 176, 177, 178, 179, 180, 181, 182, 183, 184, 185, 186, 187, 188, 189, 190, 191, 192, 193, 194, 195, 196, 197, 198, 199, 200, 201, 202, 203, 204, 205, 206, 207, 208, 209, 210, 211, 212, 213, 214, 215, 216, 217, 218, 219, 220, 221, 222, 223, 224, 225, 226, 227, 228, 229, 230, 231, 232, 233, 234, 235, 236, 237, 238, 239, 240, 241, 242, 243, 244, 245, 246, 247, 248, 249, 250, 251, 252, 253, 254, 255, 256, 257, 258, 259, 260, 261, 262, 263, 264, 265, 266, 267, 268, 269, 270, 271, 272, 273, 274, 275, 276, 277, 278, 279, 280, 281, 282, 283, 284, 285, 286, 287, 288, 289, 290, 291, 292, 293, 294, 295, 296, 297, 298, 299, 300, 301, 302, 303, 304, 305, 306, 307, 308, 309, 310, 311, 312, 313, 314, 315, 316, 317, 318, 319, 320, 321, 322, 323, 324, 325, 326, 327, 328, 329, 330, 331, 332, 333, 334, 335, 336, 337, 338, 339, 340, 341, 342, 343, 344, 345, 346, 347, 348, 349, 350, 351, 352, 353, 354, 355, 356, 357, 358, 359, 360, 361, 362, 363, 364, 365, 366, 367, 368, 369, 370, 371, 372, 373, 374, 375, 376, 377, 378, 379, 380, 381, 382, 383, 384, 385, 386, 387, 388, 389, 390, 391, 392, 393, 394, 395, 396, 397, 398, 399, 400, 401, 402, 403, 404, 405, 406, 407, 408, 409, 410, 411, 412, 413, 414, 415, 416, 417, 418, 419, 420, 421, 422, 423, 424, 425, 426, 427, 428, 429, 430, 431, 432, 433, 434, 435, 436, 437, 438, 439, 440, 441, 442, 443, 444, 445, 446, 447, 448, 449, 450, 451, 452, 453, 454, 455, 456, 457, 458, 459, 460, 461, 462, 463, 464, 465, 466, 467, 468, 469, 470, 471, 472, 473, 474, 475, 476, 477, 478, 479, 480, 481, 482, 483, 484, 485, 486, 487, 488, 489, 490, 491, 492, 493, 494, 495, 496, 497, 498, 499, 500, 501, 502, 503, 504, 505, 506, 507, 508, 509, 510, 511, 512, 513, 514, 515, 516, 517, 518, 519, 520, 521, 522, 523, 524, 525, 526, 527, 528, 529, 530, 531, 532, 533, 534, 535, 536, 537, 538, 539, 540, 541, 542, 543, 544, 545, 546, 547, 548, 549, 550, 551, 552, 553, 554, 555, 556, 557, 558, 559, 560, 561, 562, 563, 564, 565, 566, 567, 568, 569, 570, 571, 572, 573, 574, 575, 576, 577, 578, 579, 580, 581, 582, 583, 584, 585, 586, 587, 588, 589, 590, 591, 592, 593, 594, 595, 596, 597, 598, 599, 600, 601, 602, 603, 604, 605, 606, 607, 608, 609, 610, 611, 612, 613, 614, 615, 616, 617, 618, 619, 620, 621, 622, 623, 624, 625, 626, 627, 628, 629, 630, 631, 632, 633, 634, 635, 636, 637, 638, 639, 640, 641, 642, 643, 644, 645, 646, 647, 648, 649, 650, 651, 652, 653, 654, 655, 656, 657, 658, 659, 660, 661, 662, 663, 664, 665, 666, 667, 668, 669, 670, 671, 672, 673, 674, 675, 676, 677, 678, 679, 680, 681, 682, 683, 684, 685, 686, 687, 688, 689, 690, 691, 692, 693, 694, 695, 696, 697, 698, 699, 700, 701, 702, 703, 704, 705, 706, 707, 708, 709, 710, 711, 712, 713, 714, 715, 716, 717, 718, 719, 720, 721, 722, 723, 724, 725, 726, 727, 728, 729, 730, 731, 732, 733, 734, 735, 736, 737, 738, 739, 740, 741, 742, 743, 744, 745, 746, 747, 748, 749, 750, 751, 752, 753, 754, 755, 756, 757, 758, 759, 760, 761, 762, 763, 764, 765, 766, 767, 768, 769, 770, 771, 772, 773, 774, 775, 776, 777, 778, 779, 780, 781, 782, 783, 784, 785, 786, 787, 788, 789, 790, 791, 792, 793, 794, 795, 796, 797, 798, 799, 800, 801, 802, 803, 804, 805, 806, 807, 808, 809, 810, 811, 812, 813, 814, 815, 816, 817, 818, 819, 820, 821, 822, 823, 824, 825, 826, 827, 828, 829, 830, 831, 832, 833, 834, 835, 836, 837, 838, 839, 840, 841, 842, 843, 844, 845, 846, 847, 848, 849, 850, 851, 852, 853, 854, 855, 856, 857, 858, 859, 860, 861, 862, 863, 864, 865, 866, 867, 868, 869, 870, 871, 872, 873, 874, 875, 876, 877, 878, 879, 880, 881, 882, 883, 884, 885, 886, 887, 888, 889, 890, 891, 892, 893, 894, 895, 896, 897, 898, 899, 900, 901, 902, 903, 904, 905, 906, 907, 908, 909, 910, 911, 912, 913, 914, 915, 916, 917, 918, 919, 920, 921, 922, 923, 924, 925, 926, 927, 928, 929, 930, 931, 932, 933, 934, 935, 936, 937, 938, 939, 940, 941, 942, 943, 944, 945, 946, 947, 948, 949, 950, 951, 952, 953, 954, 955, 956, 957, 958, 959, 960, 961, 962, 963, 964, 965, 966, 967, 968, 969, 970, 971, 972, 973, 974, 975, 976, 977, 978, 979, 980, 981, 982, 983, 984, 985, 986, 987, 988, 989, 990, 991, 992, 993, 994, 995, 996, 997, 998, 999, 1000.

P. 1. No. 23
Found 1 1/2" iron pipe, wood plug & nail 12" below surface. See Rd Dept. F. B. 3293-19. Replaced wood plug with conc. plug & brass tag marked "L.A. CO. ENGR." F. B. 3293-19.

P. 1. No. 22
Found 1" x 2" stake & nail 10" below surface. Replaced same with 2" iron pipe, conc. plug, tack & brass tag marked "L.A. CO. ENGR." F. B. 3293-18.

Found 1 1/2" iron pipe, conc. plug & brass tag marked "L.A. CO. ENGR." F. B. 3293-17. 6" below surface & 0.10' S'y of line. See F. B. 3293-20. Removed same & set 2" iron pipe, conc. plug, tack & brass tag marked "L.A. CO. ENGR." 10" below surface. F. B. 3293-17.

P. 1. No. 21
Found nail & tin 1/2" below surface. See F. B. 3293-20. Replaced same with 2" iron pipe, conc. plug tack & brass tag marked "L.A. CO. ENGR." in handhole. F. B. 3293-16.

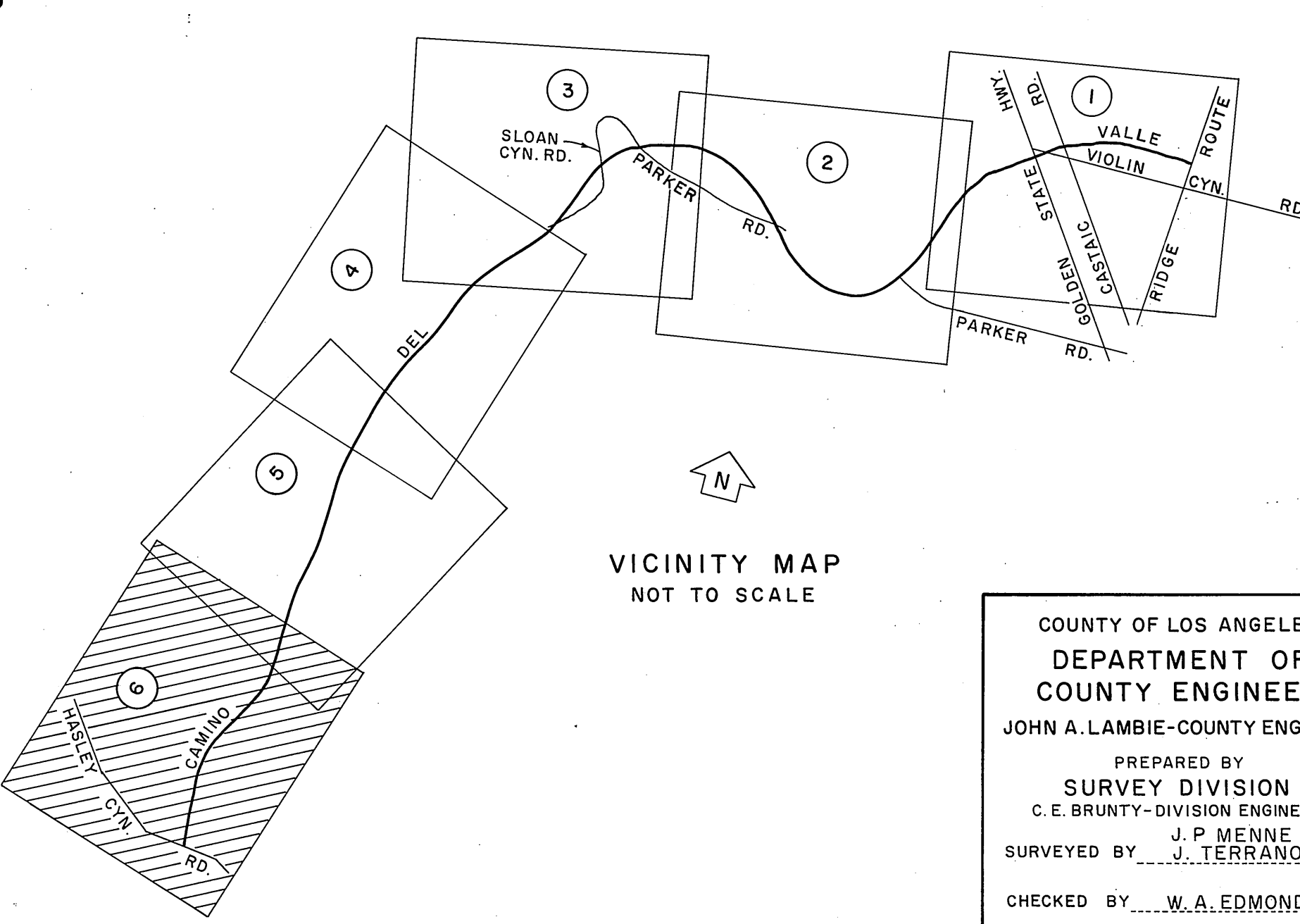
P. 1. No. 20
Set 2" iron pipe, conc. plug, tack & brass tag marked "L.A. CO. ENGR." in handhole by proportion between P. 1. No. 19 & P. 1. No. 21 per F.M. 18520. F. B. 3293-15, 22, 23.

Set 2" iron pipe, conc. plug, tack & brass tag marked "L.A. CO. ENGR." F. B. 3293-224.
Set large boat spike, washer & pin. F. B. 3293-225.

P. 1. No. 19
Found 1 1/2" iron pipe, conc. plug & nail 24" below surface. Set 2" iron pipe, conc. plug, tack & brass tag marked "L.A. CO. ENGR." above same in handhole. F. B. 3293-14.

P. 1. No. 18
Found 1" x 2" stake. Replaced same with 1 1/2" iron pipe, conc. plug, tack & brass tag marked "L.A. CO. ENGR." in handhole. F. B. 3293-13.

- * REVISION:
- ① DIMENSION ARROW CORRECTED AT NORTH 1/4 SECTION CORNER, SEC. 3, T. 4 N., R. 17 W.
 - ② Lake Hughes Rd. changed to Ridge Route per S.N.C. No. 514
 - ③ The alignment of Hasley Canyon Rd. added per C.S.B-5149-4.



SCALE IN FEET
0 100 200 300

COUNTY OF LOS ANGELES DEPARTMENT OF COUNTY ENGINEER JOHN A. LAMBIE-COUNTY ENGINEER PREPARED BY SURVEY DIVISION C. E. BRUNTY-DIVISION ENGINEER SURVEYED BY.....J. P. MENNE..... CHECKED BY.....W. A. EDMONDSON..... DRAWN BY.....M. HAMASU.....	ALIGNMENT MAP OF CAMINO DEL VALLE FROM RIDGE ROUTE TO HASLEY CANYON ROAD		COUNTY SURVEYOR'S MAP NO. B-5001 SHEET 6 OF 6 SHEETS FILED.....6-7.....1968 <i>George J. Brantly</i> COUNTY SURVEYOR DEPUTY	REVISION* NO. BY DATE ① M.H. 7-18-68 ② G.H.S. 8-14-70 ③ S.R.B. 2-17-72
	BASIS OF BEARINGS THE BEARING OF THE W'LY SECTION LINE OF SECTION 26, T. 5 N., R. 17 W. PER C.S.B-2894-1.		SURVEYED OCT. TO DEC. 1967	
			REFERENCE F. B. 2901 F. B. 3293	
			JOB NUMBER 0097.61	INDEX MAP NO. 17, 63, 77