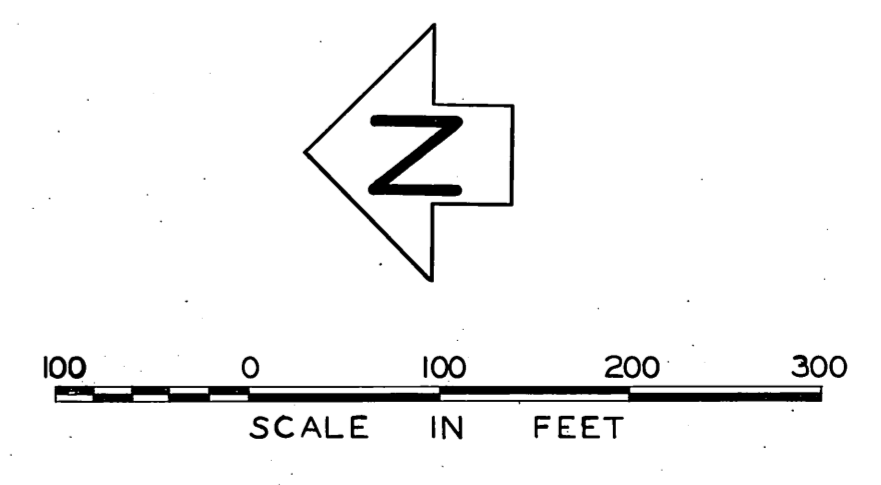
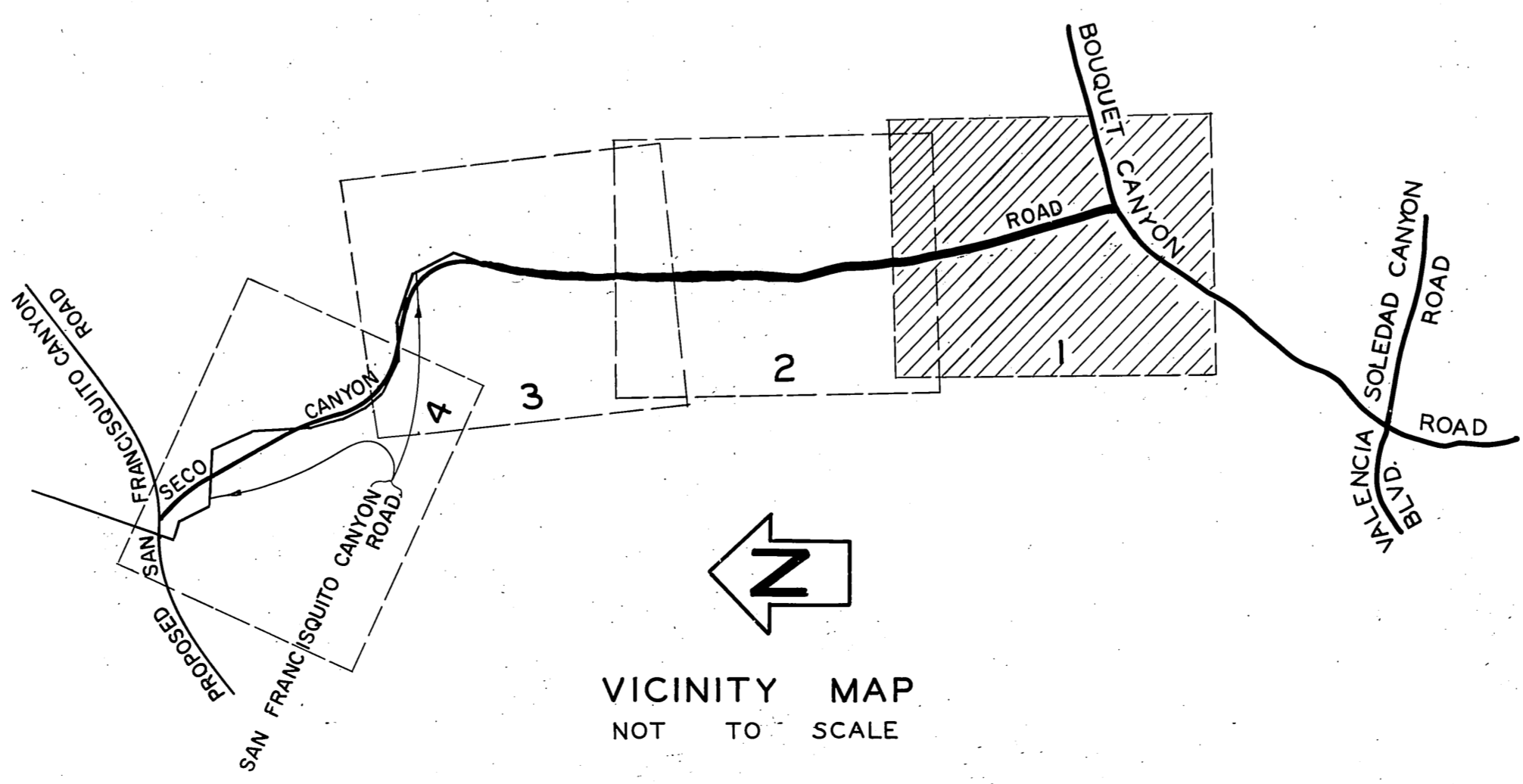
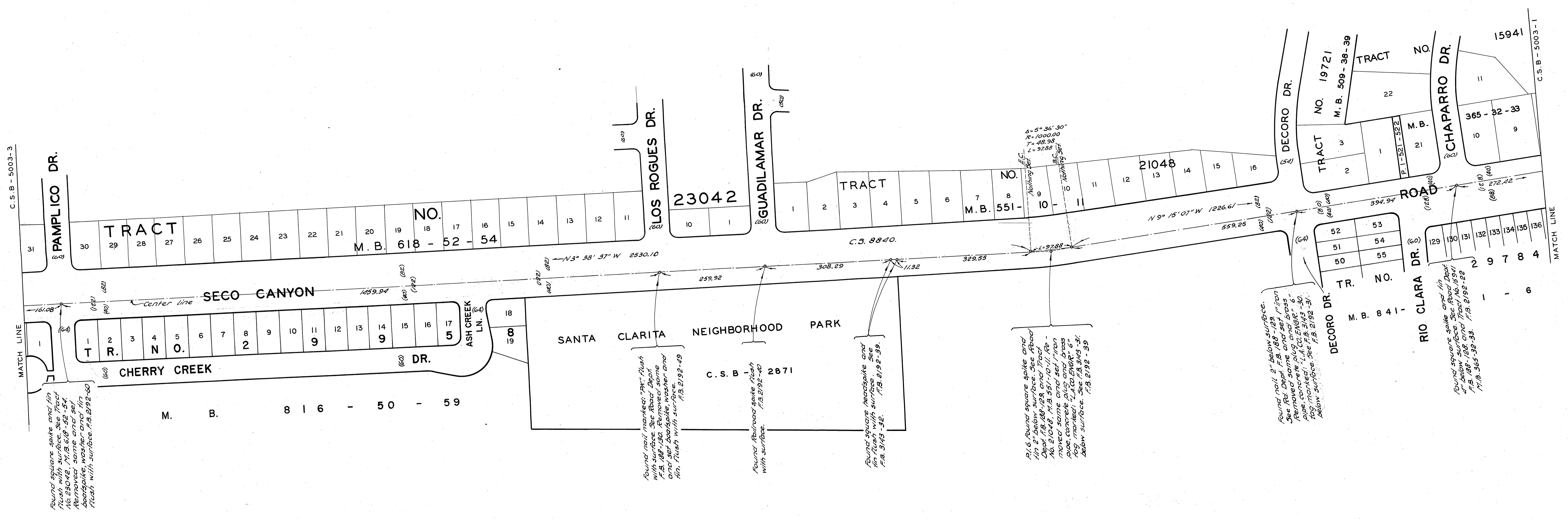


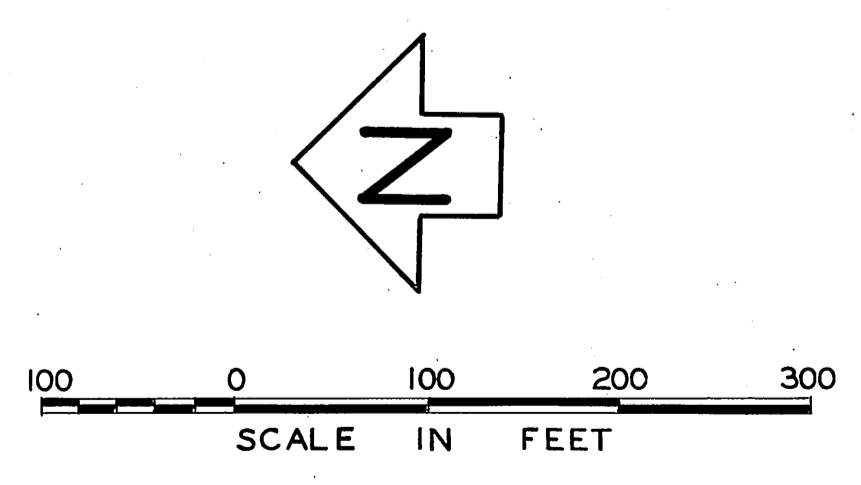
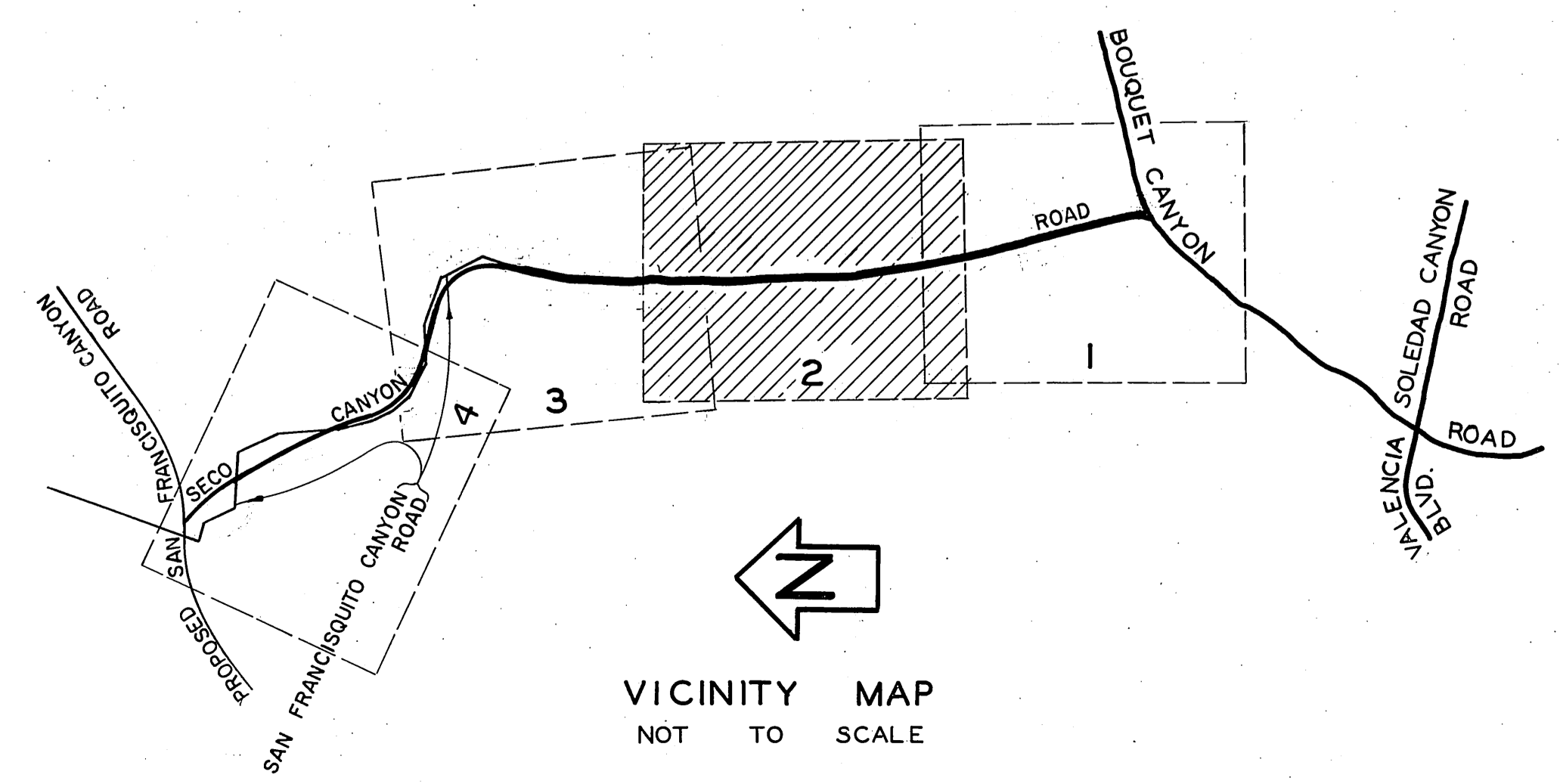
REVISIONS:
 ① Sheet 4 added to extend the alignment to proposed San Francisquito Canyon Road. Sheets 1, 2 & 3 have been revised to reflect this addition. The name San Francisquito Canyon Road was deleted per S.N.C. No. 508.
 ② Cadastral Data Revised.



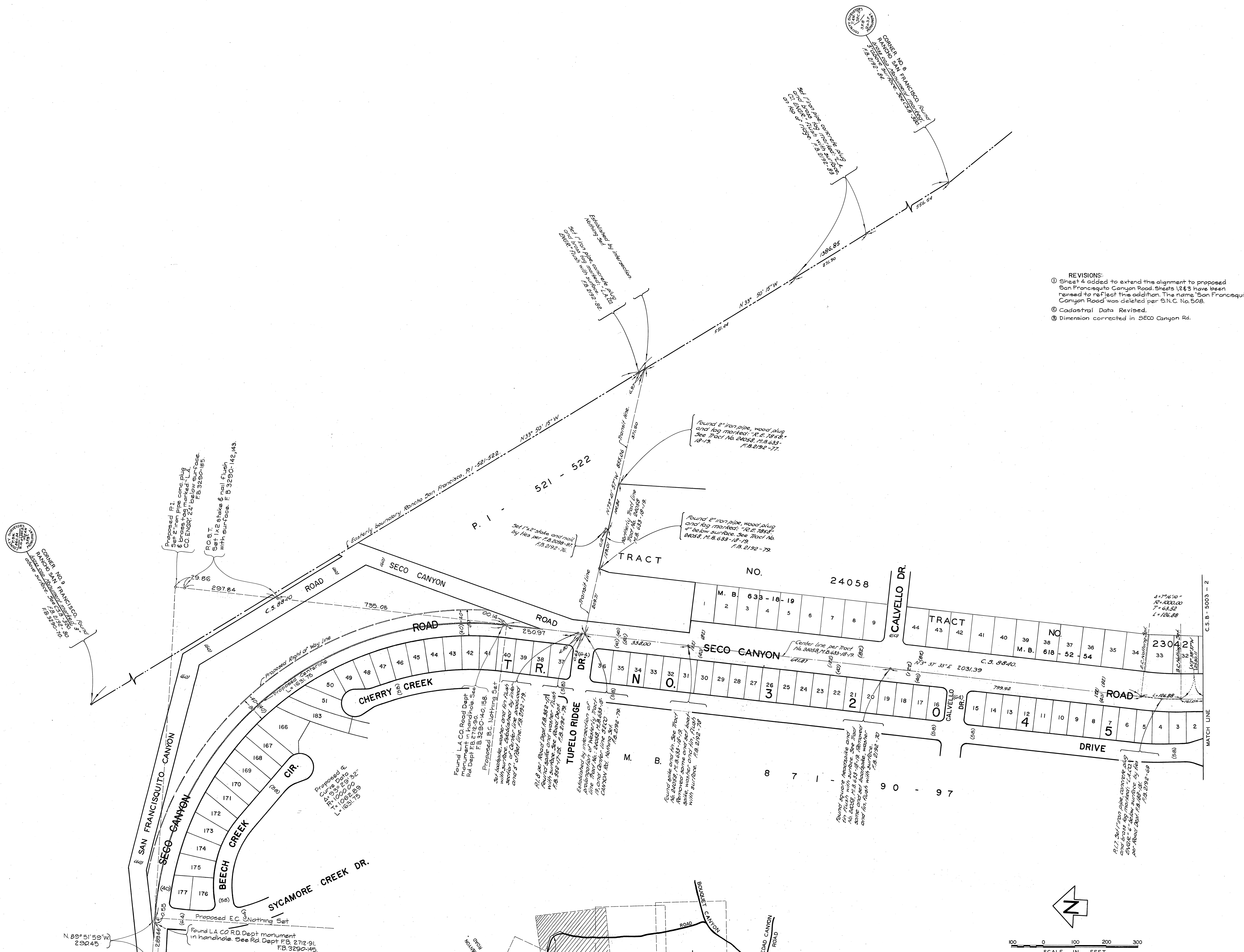
COUNTY OF LOS ANGELES DEPARTMENT OF COUNTY ENGINEER JOHN LAMBIE-COUNTY ENGINEER PREPARED BY SURVEY DIVISION C.E. BRUNTY-DIVISION ENGINEER SURVEYED BY W.J. VOGEL CHECKED BY A.E. DART DRAWN BY H. HOLMAN	ALIGNMENT MAP OF SECO CANYON ROAD FROM BOUQUET CANYON ROAD TO SAN FRANCISCO CANYON ROAD		COUNTY SURVEYOR'S MAP NO. B-5003 SHEET 1 OF 4 SHEETS FILED: 4-22-1968 SURVEYED MAY - OCT. 1964 REFERENCE F.B. 2192-5-84 JOB NUMBER 0095.74 INDEX MAP NO. 264-117	REVISION NO. BY DATE ① C.E.M. 10/1/70 ② A.M. 9/22/77
	BASIS OF BEARINGS BEARINGS ARE BASED ON THE BEARING OF BOUQUET CANYON ROAD PER C.S.B - 2771			
	ANGLE POINT Found at L.A. Co. Road Dept. Station 100+00.00 See C.S.B. 2771 F.B. 1889-167 F.B. 2192-9			
	Found spike, washer and tin flush with surface. See C.S.B. 2771. Found spike, washer and tin flush with surface. See C.S.B. 2771. Found spike, washer and tin flush with surface. See C.S.B. 2771. Found spike, washer and tin flush with surface. See C.S.B. 2771. Found spike, washer and tin flush with surface. See C.S.B. 2771.			



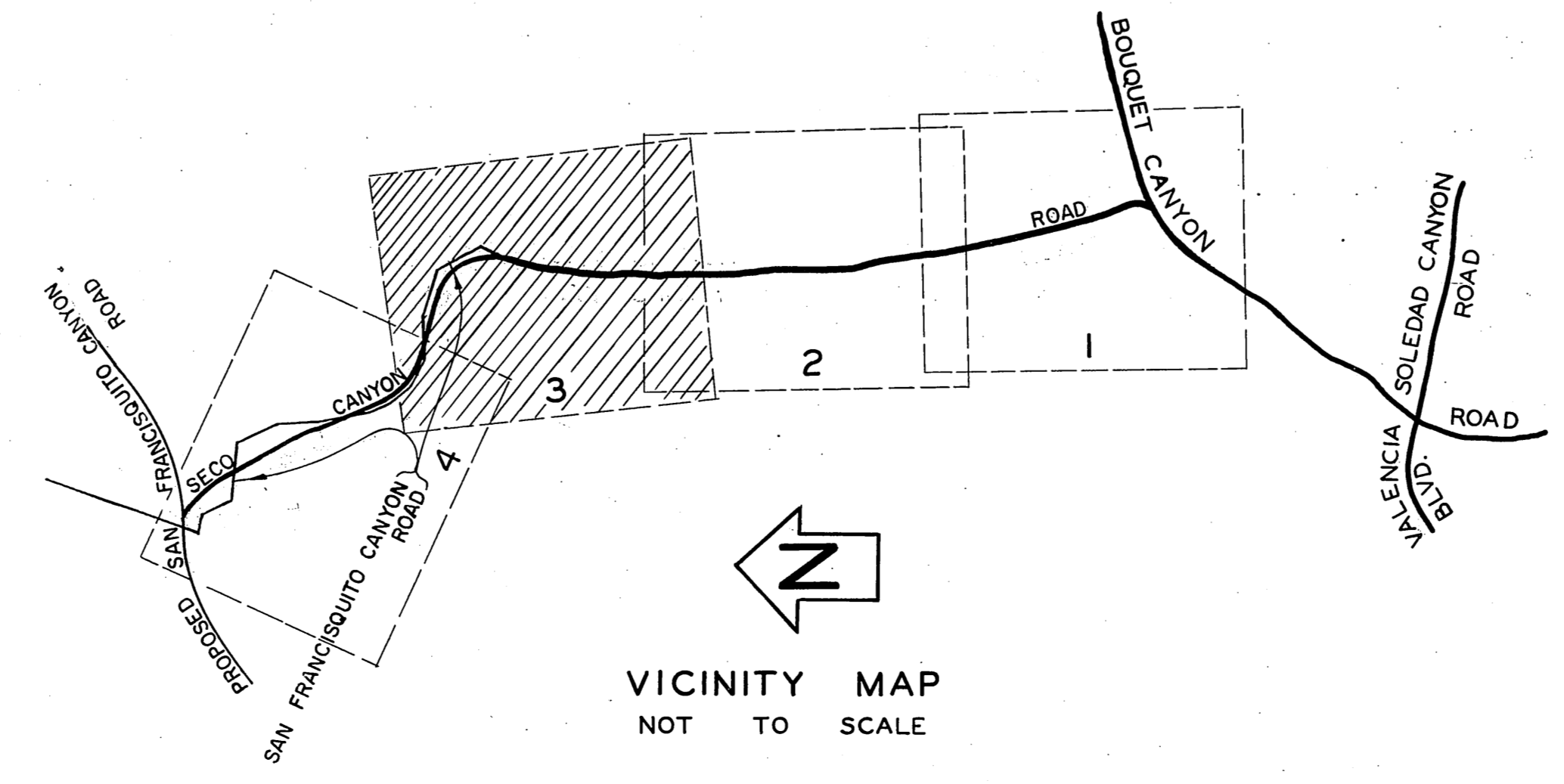
REVISIONS:
 ① Sheet 4 added to extend this alignment to proposed San Francisquito Canyon Road. Sheets 1, 2 & 3 have been revised to reflect this addition. The name San Francisquito Canyon Road was deleted per S.N.C. No. 508
 ② Cadastral Data Revised.



COUNTY OF LOS ANGELES DEPARTMENT OF COUNTY ENGINEER JOHN LAMBE-COUNTY ENGINEER PREPARED BY SURVEY DIVISION C.E. BRUNTY-DIVISION ENGINEER SURVEYED BY <u>W.J. VOGE</u> CHECKED BY <u>A.E. DART</u> DRAWN BY <u>H. HOLMAN</u>	ALIGNMENT MAP OF SECO CANYON ROAD FROM BOUQUET CANYON ROAD TO SAN FRANCISQUITO CANYON ROAD		COUNTY SURVEYOR'S MAP NO. B-5003 SHEET 2 OF 4 SHEETS	REVISION NO. BY DATE 1 BY 10/22/1962 2 BY 10/22/1962 3 BY 10/22/1962
	FILED: <u>10/22/1962</u> DEPUTY COUNTY ENGINEER			SURVEYED MAY - OCT. 1964 REFERENCE F.B. 2192-5-84
	BASIS OF BEARINGS BEARINGS ARE BASED ON THE BEARING OF BOUQUET CANYON ROAD PER C.S.B - 2771			JOB NUMBER INDEX MAP NO. 0095-74 264-117
	SCALE IN FEET 0 100 200 300			



- REVISIONS:
- ① Sheet 4 added to extend this alignment to proposed San Francisco Canyon Road. Sheets 1, 2 & 3 have been revised to reflect this addition. The name 'San Francisco Canyon Road' was deleted per S.N.C. No. 508.
 - ② Cadastral Data Revised.
 - ③ Dimension corrected in Seco Canyon Rd.



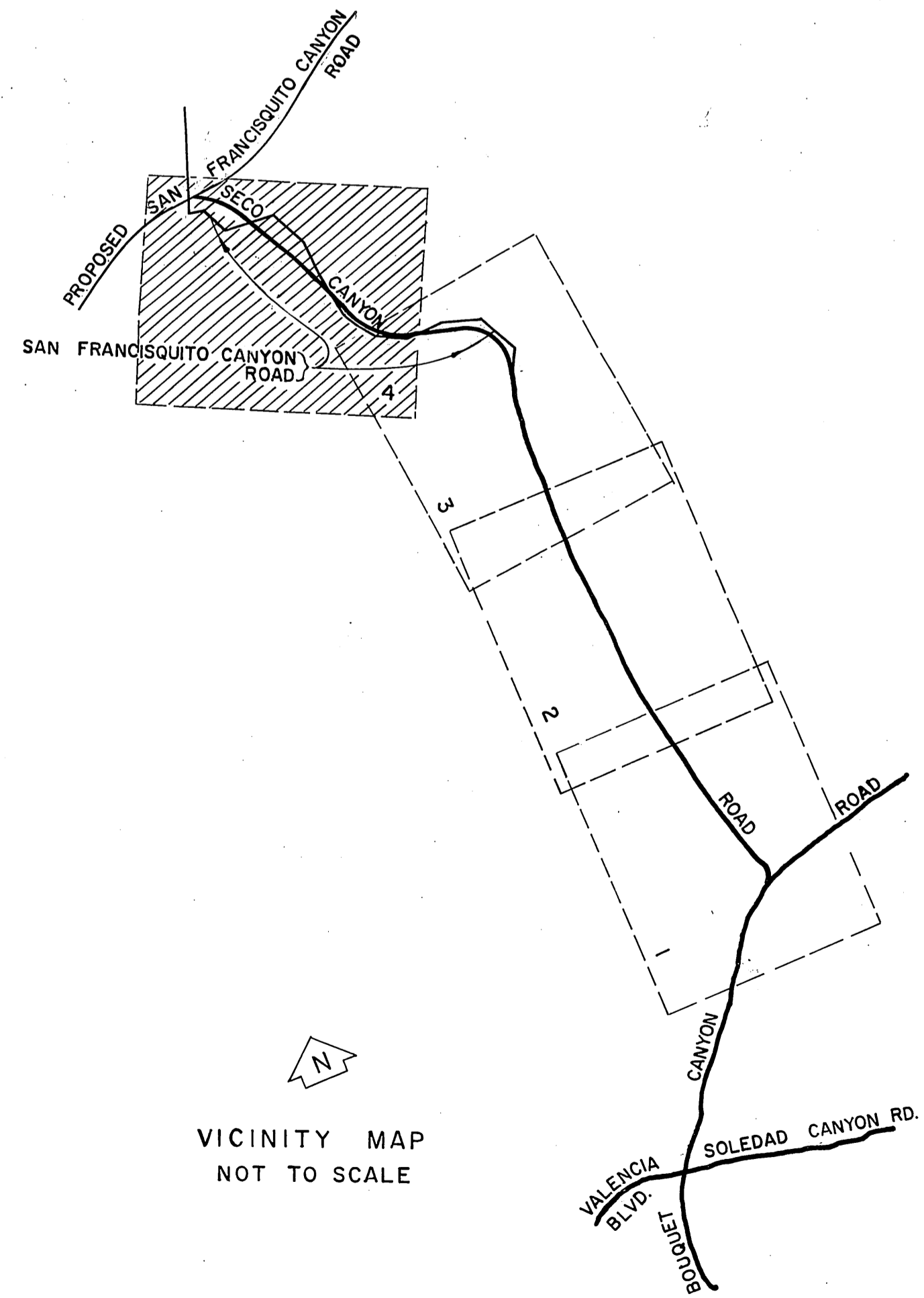
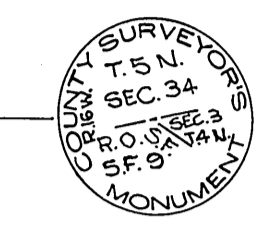
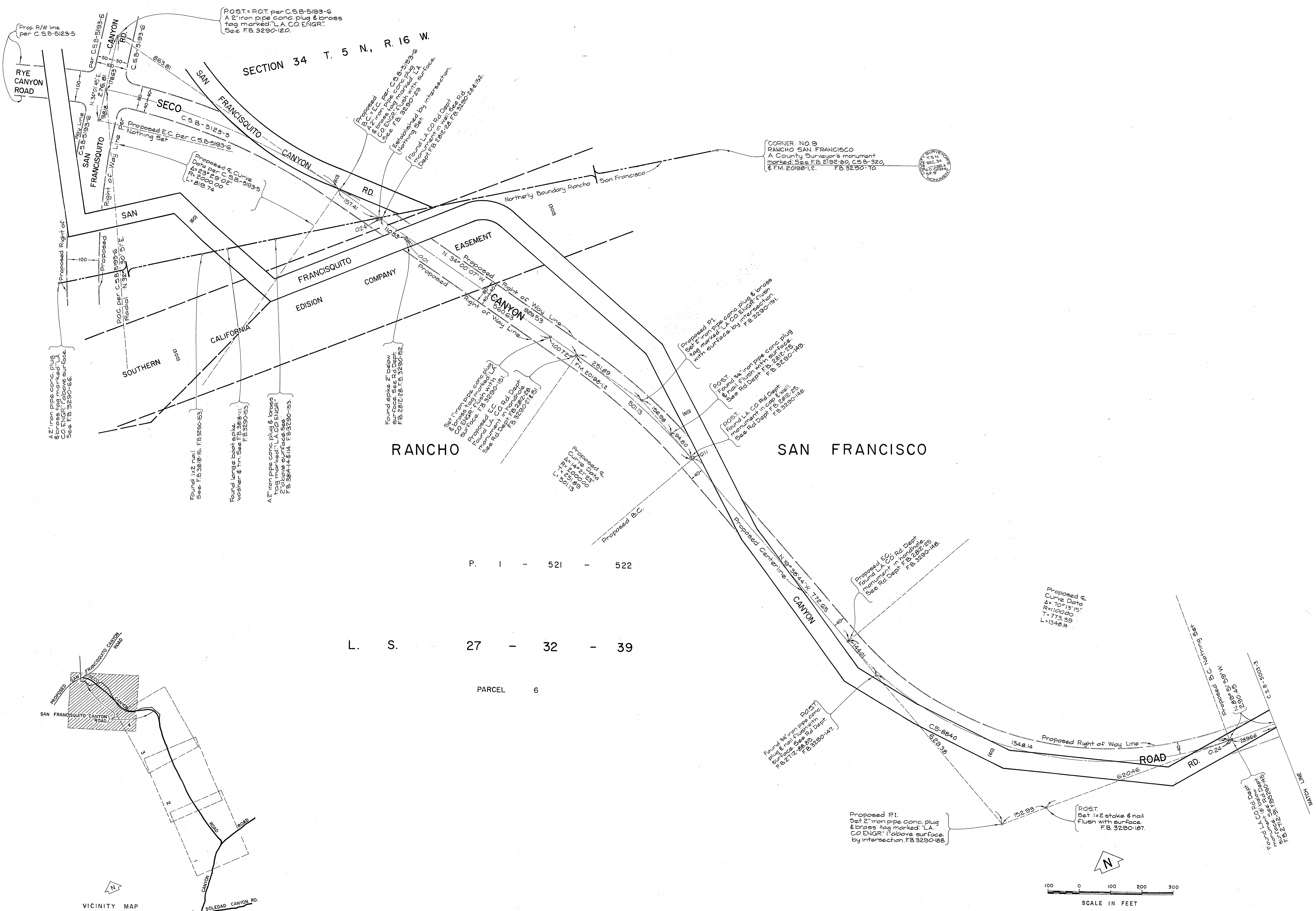
COUNTY OF LOS ANGELES
DEPARTMENT OF
COUNTY ENGINEER
JOHN LAMBE-COUNTY ENGINEER
PREPARED BY
SURVEY DIVISION
C.E. BRUNTY-DIVISION ENGINEER
SURVEYED BY W. J. VOGEL
CHECKED BY A. E. DART
DRAWN BY H. HOLMAN

ALIGNMENT MAP OF
SECO CANYON ROAD
FROM
BOUQUET CANYON ROAD
TO
SAN FRANCISCO CANYON ROAD

BASIS OF BEARINGS
BEARINGS ARE BASED ON THE BEARING OF
BOUQUET CANYON ROAD PER C.S.B-2771

COUNTY SURVEYOR'S MAP NO.
B-5003
SHEET 3 OF 4 SHEETS
FILED: 4-22-1964
W. J. Vogel
SURVEYED
MAY - OCT. 1964
REFERENCE
F. B. 2192-5-84
JOB NUMBER 0095.74 INDEX MAP NO. 264-117

REVISION		
NO.	BY	DATE
①	C.E.M.	10/1/75
②	A.M.	9/29/77
③	A.M.	1-4-78



P. I. - 521 - 522
 L. S. 27 - 32 - 39
 PARCEL 6

Proposed E.
 Curve Data
 Δ = 104°13'15"
 R = 1102.00
 T = 773.39
 L = 1348.14

SCALE IN FEET
 0 100 200 300

COUNTY OF LOS ANGELES DEPARTMENT OF COUNTY ENGINEER HARVEY T. BRANDT—COUNTY ENGINEER PREPARED BY SURVEY DIVISION GEORGE J. FRANCISCONI—DIVISION ENGINEER SURVEYED BY M. NEVAREZ CHECKED BY J. SYKES DRAWN BY C. MOTEN	ALIGNMENT MAP OF SECO CANYON ROAD FROM BOUQUET CANYON ROAD TO SAN FRANCISCO CANYON ROAD <small>BASIS OF BEARINGS</small> BEARINGS ARE BASED ON THE BEARING OF BOUQUET CANYON ROAD PER C.S.B-2771		COUNTY SURVEYOR'S MAP NO. B-5003 SHEET 4 OF 4 SHEETS FILED: <i>March 3, 1974</i> <i>George J. Franciscioni</i> SURVEYED FEBRUARY 1974 - MARCH 1974 REFERENCE F.B. 3290 JOB NUMBER 0095.74	REVISION <table border="1"> <tr><th>NO.</th><th>BY</th><th>DATE</th></tr> <tr><td> </td><td> </td><td> </td></tr> <tr><td> </td><td> </td><td> </td></tr> <tr><td> </td><td> </td><td> </td></tr> </table>	NO.	BY	DATE									
	NO.	BY	DATE													