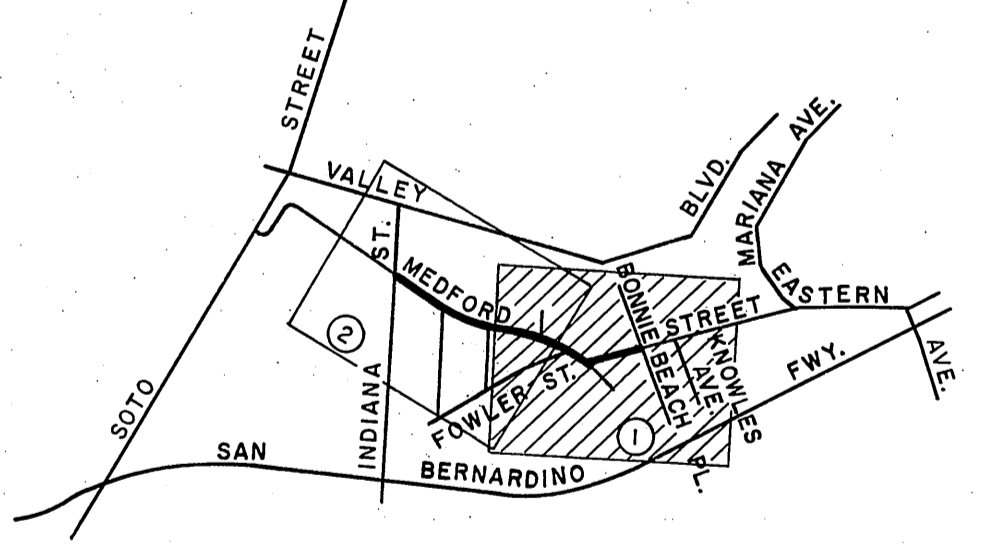
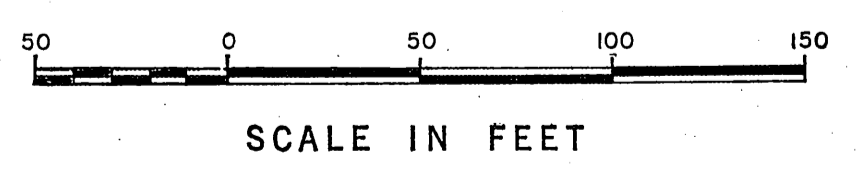


DETAIL
NOT TO SCALE

DETAIL
ABOVE

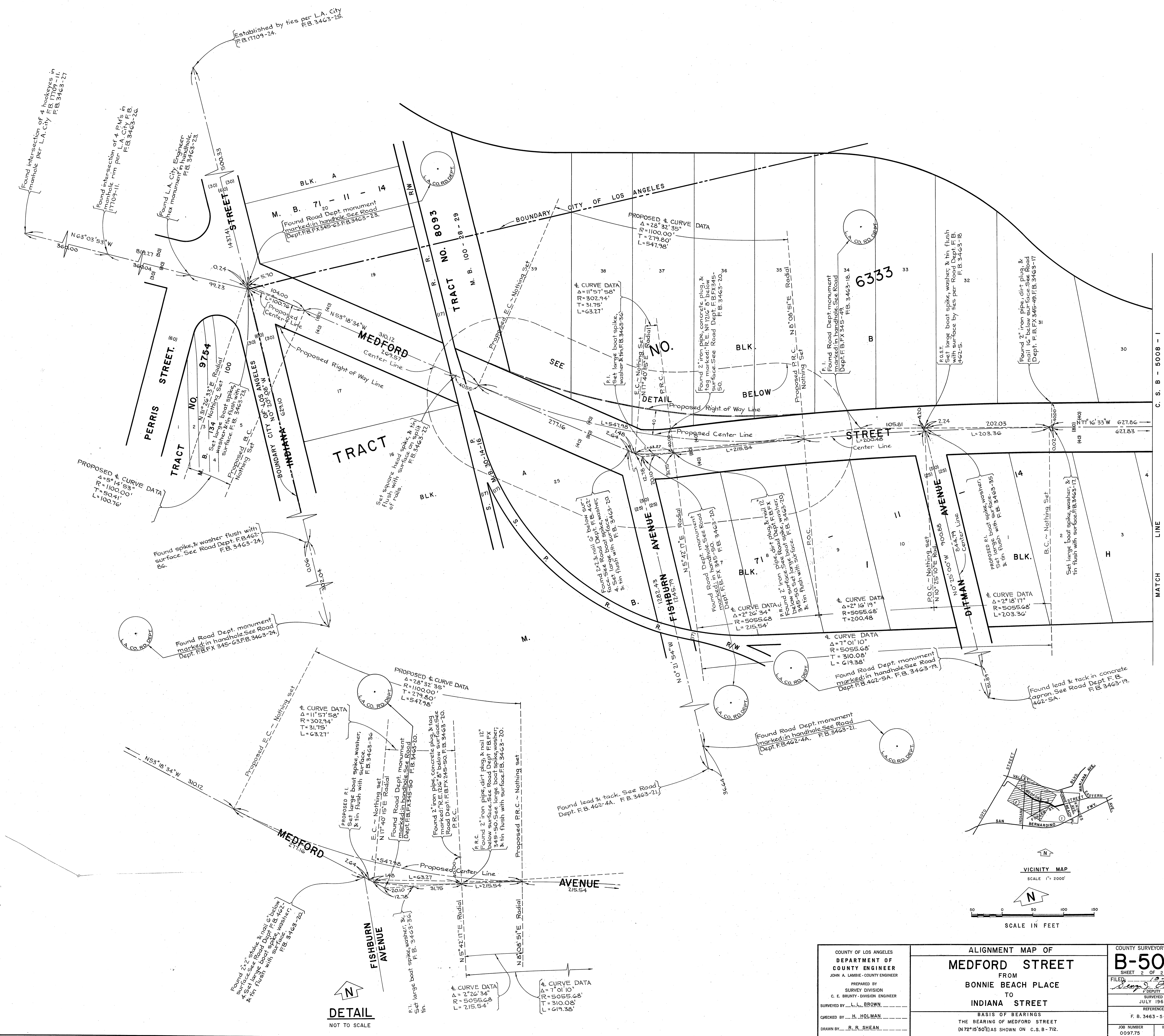


VICINITY MAP
SCALE 1" = 2000'



MATCH LINE C. S. B - 5008 - 2

COUNTY OF LOS ANGELES DEPARTMENT OF COUNTY ENGINEER JOHN A. LAMBIE - COUNTY ENGINEER PREPARED BY SURVEY DIVISION C. E. BRUNTY - DIVISION ENGINEER SURVEYED BY L. L. BROWN CHECKED BY H. HOLMAN DRAWN BY R. R. SHEAN	ALIGNMENT MAP OF MEDFORD STREET FROM BONNIE BEACH PLACE TO INDIANA STREET BASIS OF BEARINGS THE BEARING OF MEDFORD STREET (N72°15'50"E) AS SHOWN ON C.S.B-712		COUNTY SURVEYOR'S MAP NO. B-5008 SHEET 1 OF 2 SHEETS FILED 10/6/1966 SURVEYED JULY 1966 REFERENCE F. B. 3463-5-36	REVISION NO. BY DATE
			JOB NUMBER 0097.75	INDEX MAP NO. 8



PROPOSED CURVE DATA
 $\Delta = 51^{\circ}14'53''$
 $R = 1100.00'$
 $T = 50.41'$
 $L = 100.76'$

PROPOSED CURVE DATA
 $\Delta = 28^{\circ}32'35''$
 $R = 1100.00'$
 $T = 279.80'$
 $L = 547.98'$

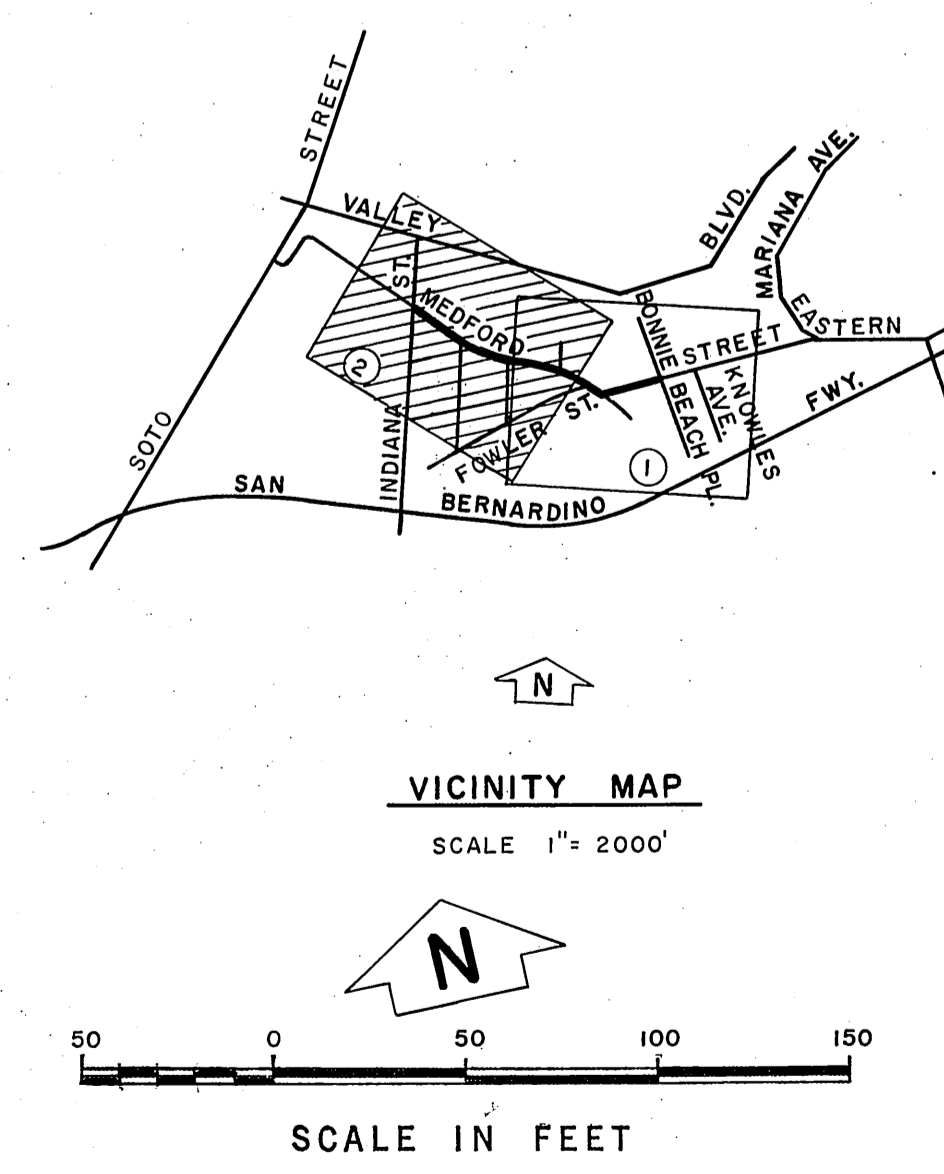
PROPOSED CURVE DATA
 $\Delta = 11^{\circ}57'58''$
 $R = 302.94'$
 $T = 31.75'$
 $L = 63.27'$

PROPOSED CURVE DATA
 $\Delta = 7^{\circ}01'10''$
 $R = 5055.68'$
 $T = 310.08'$
 $L = 619.38'$

PROPOSED CURVE DATA
 $\Delta = 2^{\circ}16'19''$
 $R = 5055.68'$
 $T = 200.48'$
 $L = 215.54'$

PROPOSED CURVE DATA
 $\Delta = 2^{\circ}18'17''$
 $R = 5055.68'$
 $T = 203.36'$
 $L = 215.54'$

DETAIL
 NOT TO SCALE



COUNTY OF LOS ANGELES DEPARTMENT OF COUNTY ENGINEER JOHN A. LAMBIE - COUNTY ENGINEER PREPARED BY SURVEY DIVISION C. E. BRUNTY - DIVISION ENGINEER SURVEYED BY L. L. BROWN CHECKED BY H. H. HOLMAN DRAWN BY R. R. SHEAN	ALIGNMENT MAP OF MEDFORD STREET FROM BONNIE BEACH PLACE TO INDIANA STREET BASIS OF BEARINGS THE BEARING OF MEDFORD STREET (N72°15'50"E) AS SHOWN ON C.S.B-712.		COUNTY SURVEYOR'S MAP NO. B-5008 SHEET 2 OF 2 SHEETS FILED JULY 1968 REFERENCE F.B. 3463-5-36 JOB NUMBER 0097.75	REVISION NO. BY DATE
			SURVEYED JULY 1968	
			INDEX MAP NO. 8	