

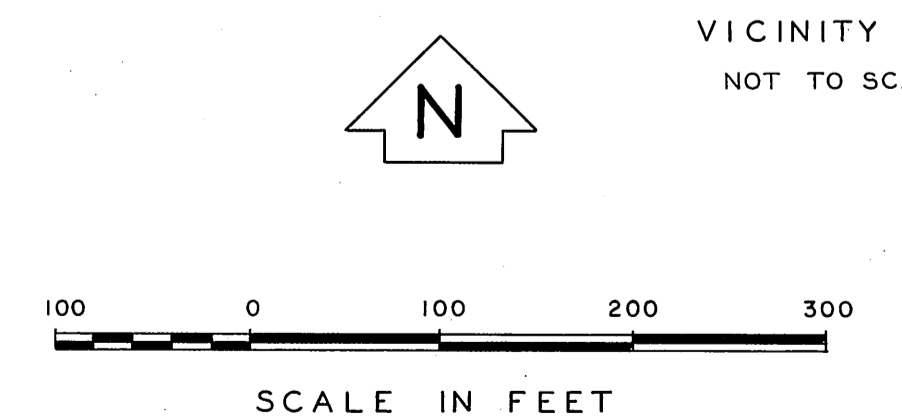
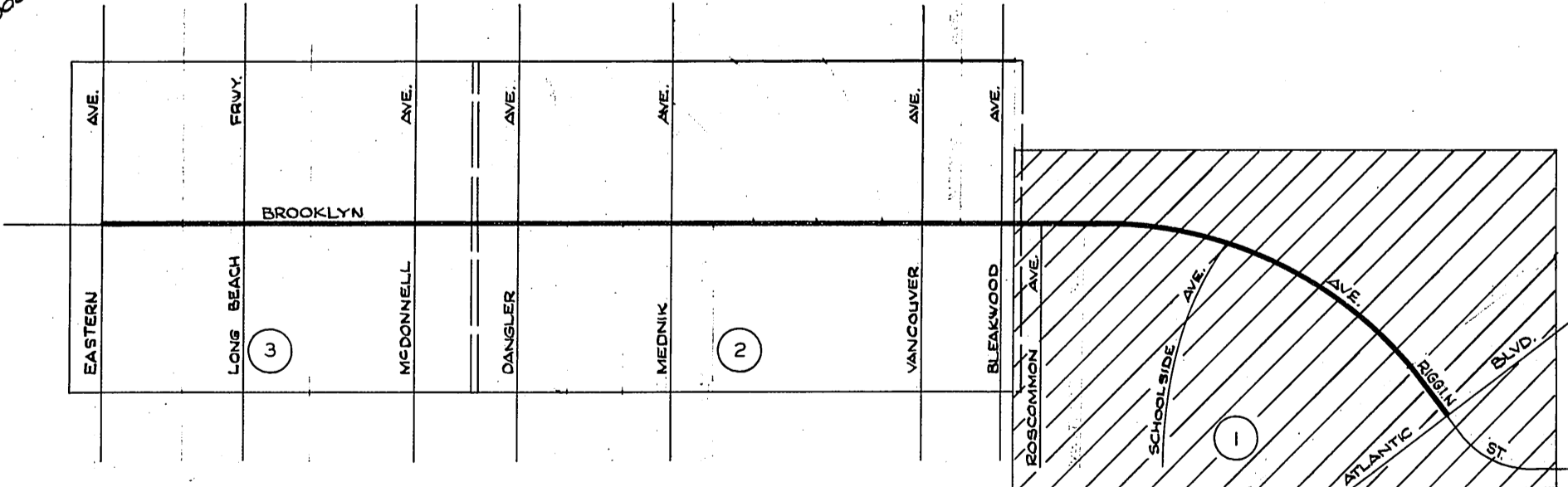
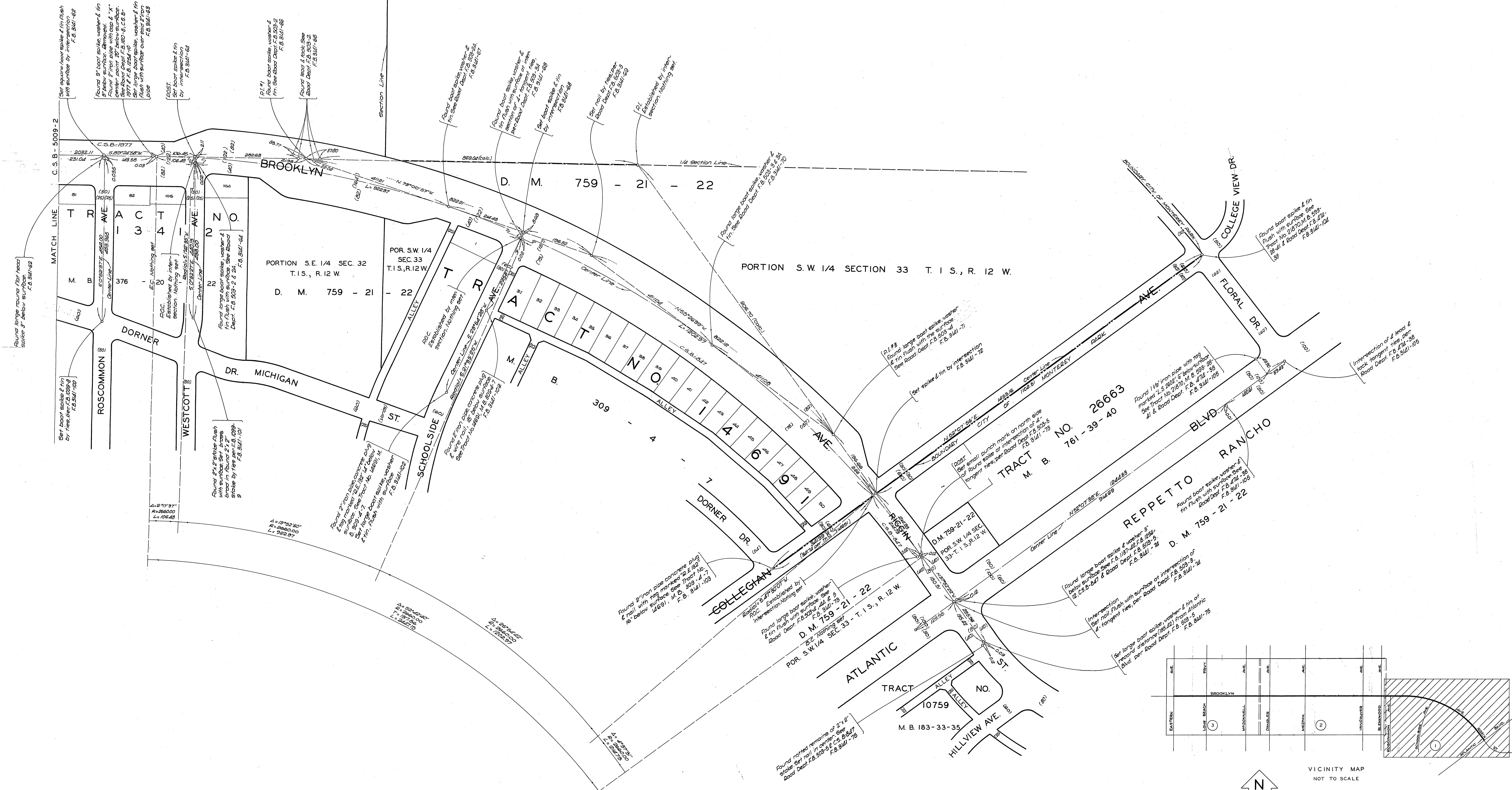
REPETTO

RANCHO

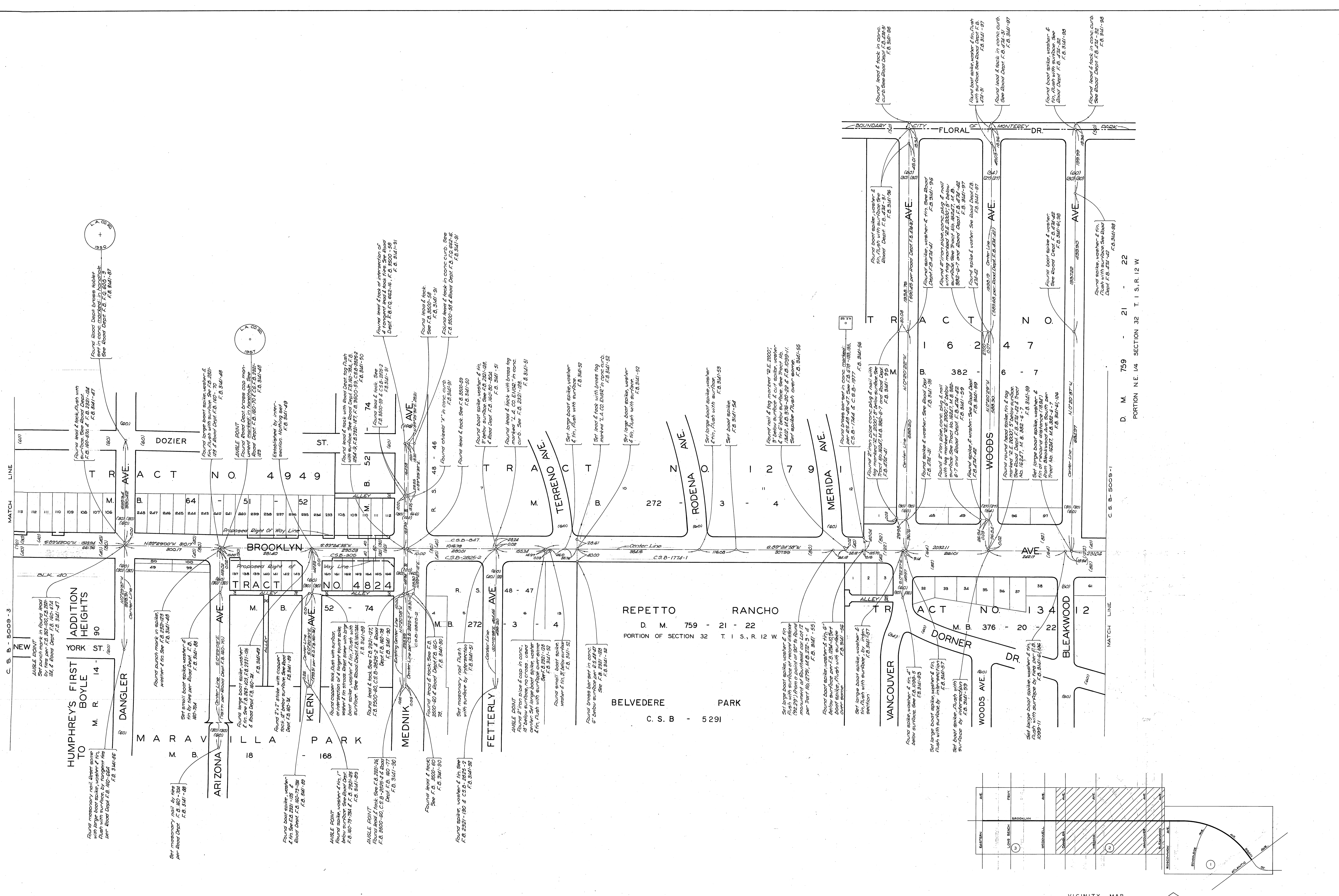
PORTION N.E. 1/4 SECTION 32 T. 1 S., R. 12 W.

PORTION N.W. 1/4 SECTION 33 T. 1 S., R. 12 W.

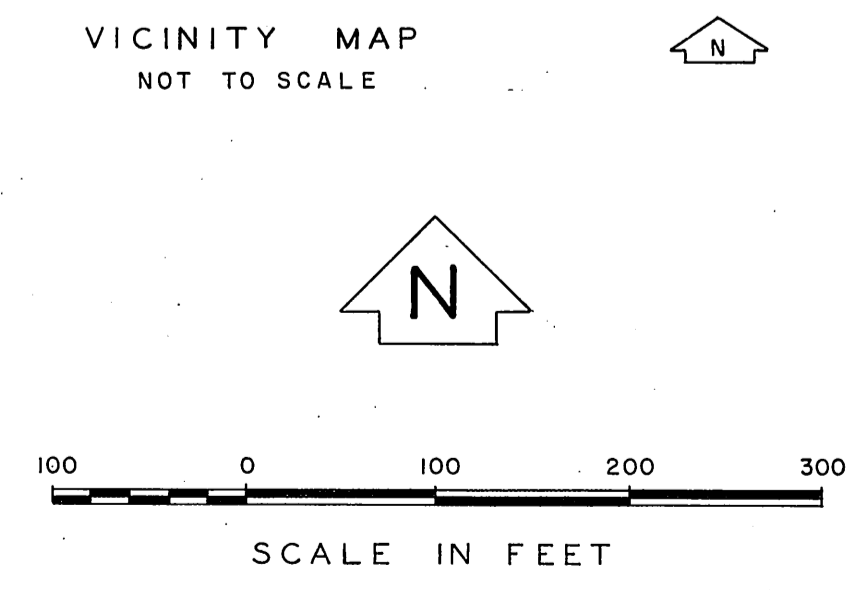
PORTION S.W. 1/4 SECTION 33 T. 1 S., R. 12 W.



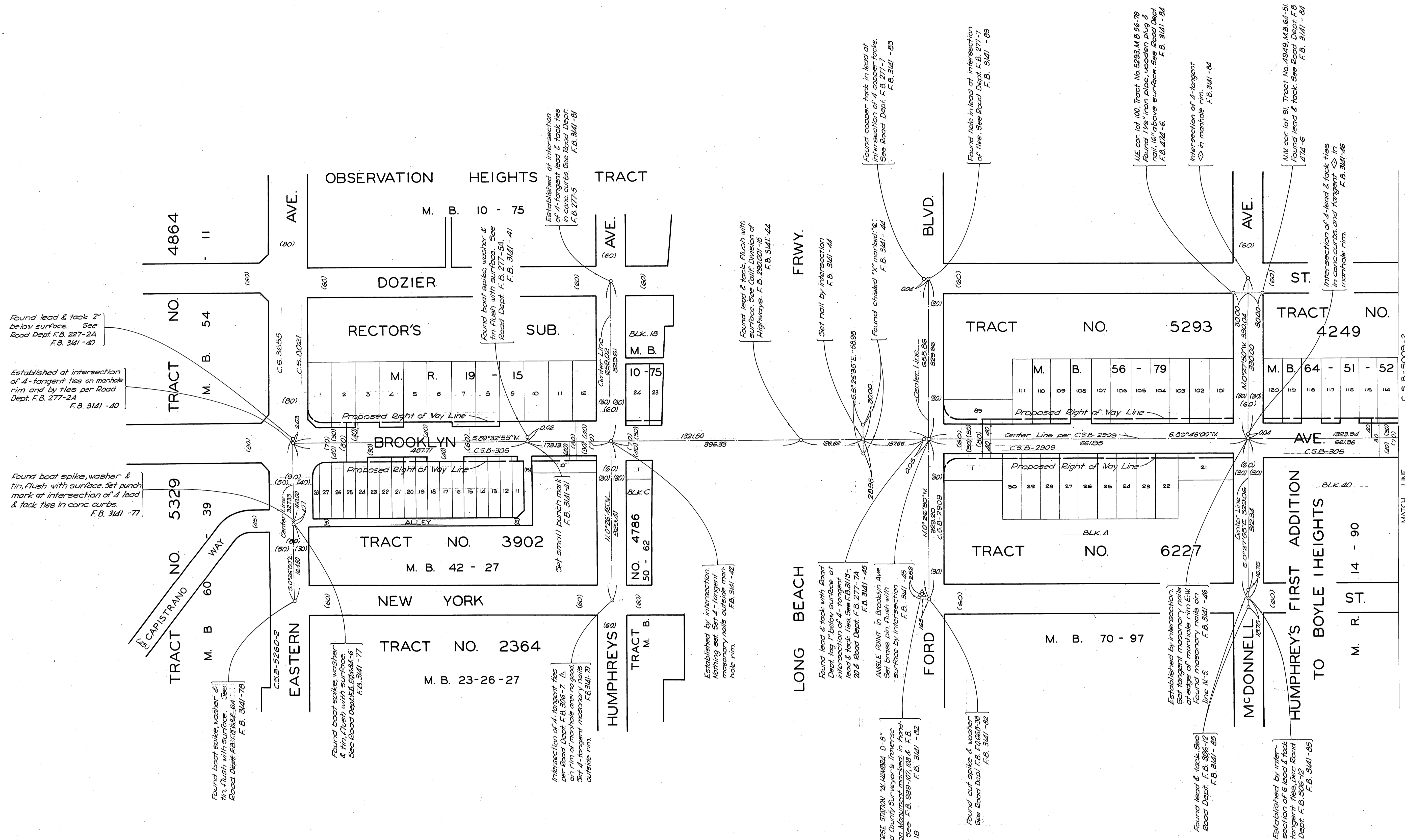
COUNTY OF LOS ANGELES DEPARTMENT OF COUNTY ENGINEER JOHN A. LAMBIE - COUNTY ENGINEER PREPARED BY SURVEY DIVISION C.E. BRUNTY - DIVISION ENGINEER SURVEYED BY J. H. BROWN CHECKED BY G. D. BAILEY DRAWN BY T. ABE	ALIGNMENT MAP OF BROOKLYN AVENUE FROM ATLANTIC BLVD. TO EASTERN AVENUE BASIS OF BEARINGS THE BEARING OF BROOKLYN AVE. PER C. S. B-2909		COUNTY SURVEYOR'S MAP NO. B-5009 SHEET 1 OF 3 SHEET FILED <i>T-12</i> 1966 <i>Samuel J. Brant</i> DEPUTY SURVEYED AUG. 8 DEC. 1966 REFERENCE F. B. 3141 - 39 - 106	REVISION NO. BY DATE
	JOB NUMBER 0097.08		INDEX MAP NO. 36	



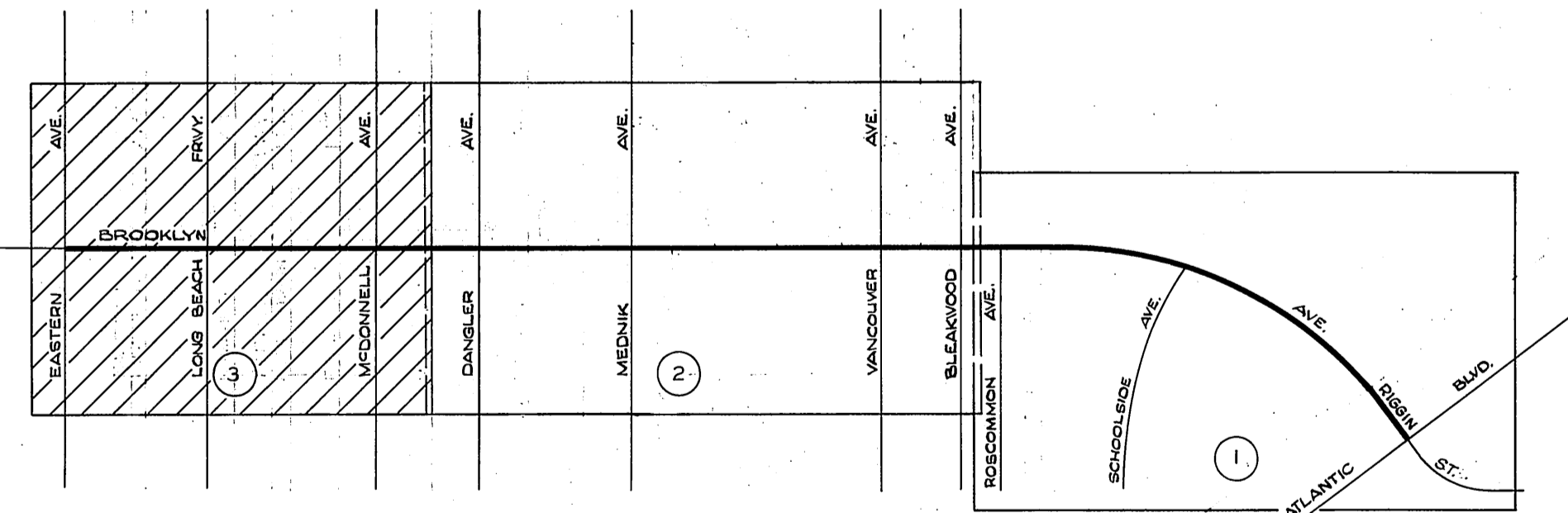
REVISION:
 ① Belvedere Park & C.S.B-529) added as reference.
 ② cadastral Data Revised.



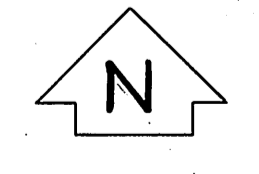
COUNTY OF LOS ANGELES DEPARTMENT OF COUNTY ENGINEER JOHN A. LAMBIE - COUNTY ENGINEER PREPARED BY SURVEY DIVISION C. E. BRUNTY - DIVISION ENGINEER SURVEYED BY J. H. BROWN CHECKED BY G. D. BAILEY DRAWN BY T. ABE	ALIGNMENT MAP OF BROOKLYN AVENUE FROM ATLANTIC BLVD. TO EASTERN AVENUE BASIS OF BEARINGS THE BEARING OF BROOKLYN AVE. PER C. S. B - 2909		COUNTY SURVEYOR'S MAP NO. B-5009 SHEET 2 OF 3 SHEET FILED 7-12-1966 <i>Seery J. [Signature]</i> DEPUTY SURVEYED AUG. 6 DEC. 1966 REFERENCE F. B. 3141 - 39-106	REVISION NO. BY DATE ① C.E.M. 12-G-76 A.M. 8-24-77
	JOB NUMBER 0097.08		INDEX MAP NO. 36	



REVISION:
 ① Cadastral Data Revised.



VICINITY MAP
 NOT TO SCALE



100 0 100 200 300
 SCALE IN FEET

COUNTY OF LOS ANGELES
 DEPARTMENT OF
 COUNTY ENGINEER
 JOHN A. LAMBIE - COUNTY ENGINEER
 PREPARED BY
 SURVEY DIVISION
 C. E. BRUNTY - DIVISION ENGINEER
 SURVEYED BY J. H. BROWN
 CHECKED BY G. D. BAILEY
 DRAWN BY T. ABE

ALIGNMENT MAP OF
BROOKLYN AVENUE
 FROM
 ATLANTIC BLVD.
 TO
 EASTERN AVENUE
 BASIS OF BEARINGS
 THE BEARING OF BROOKLYN AVE. PER C. S. B - 2909

COUNTY SURVEYOR'S MAP NO.
B-5009
 SHEET 3 OF 3 SHEET
 FILED 7-12-1966
 DEPUTY
 SURVEYED
 AUG 8 DEC. 1966
 REFERENCE
 F. B. 3141-39-106
 JOB NUMBER 0097.08 INDEX MAP NO. 36

REVISION
 NO. BY DATE
 ① A.M. 8-19-77