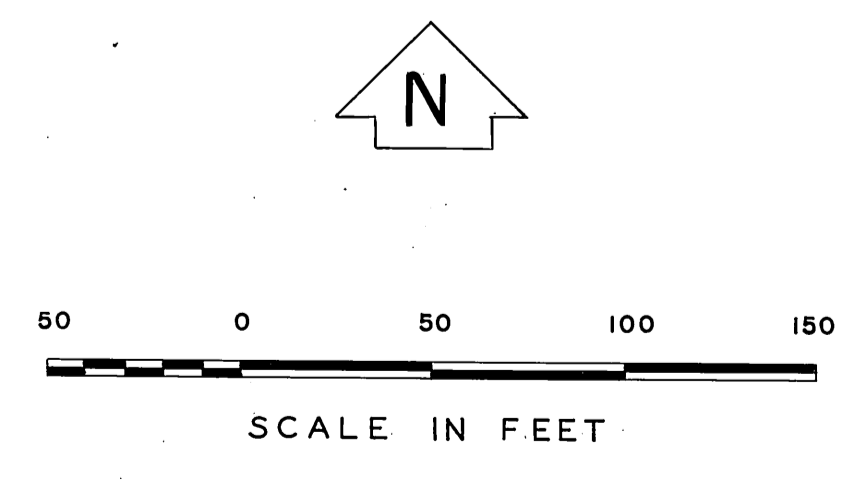
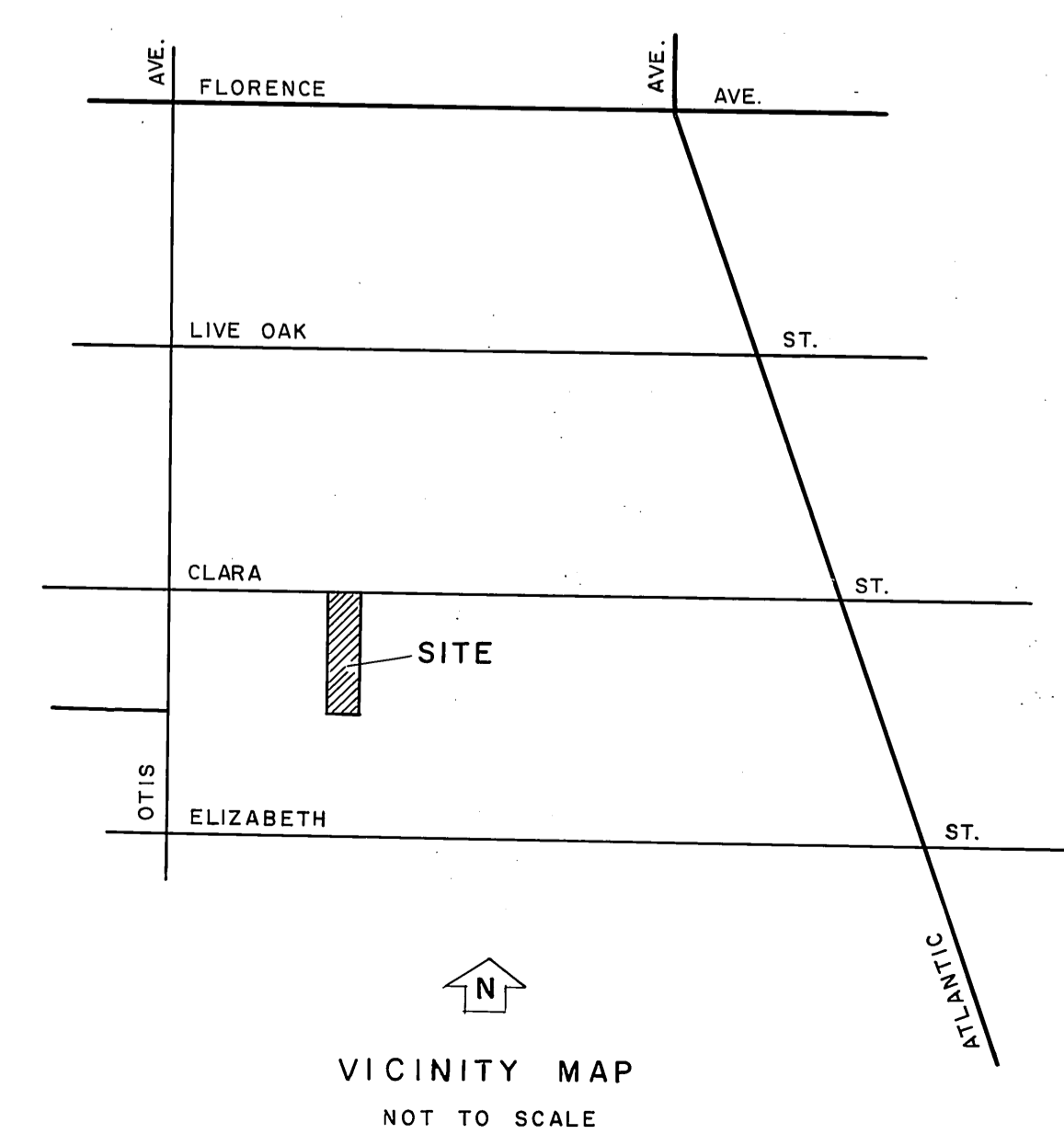
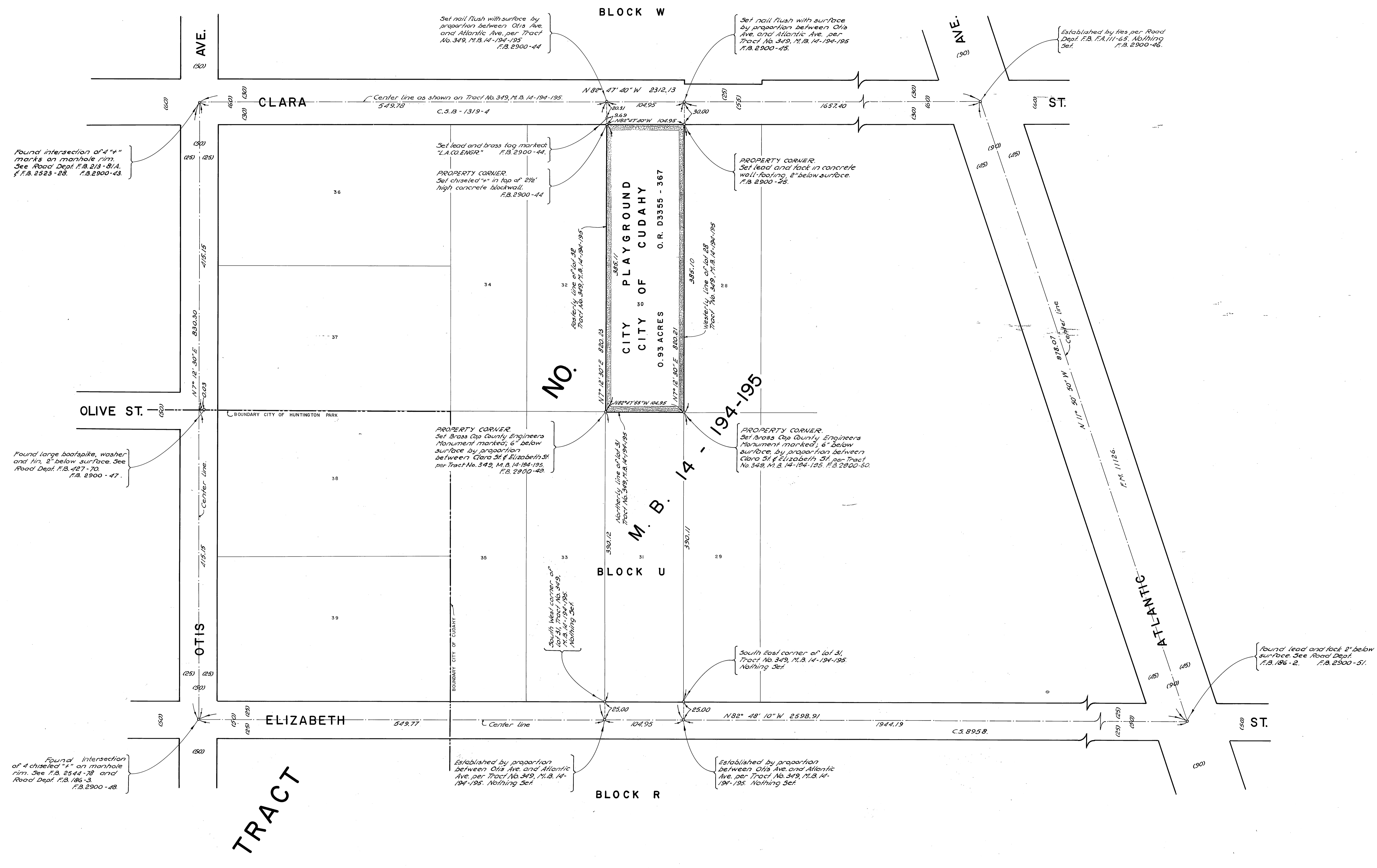


349



COUNTY OF LOS ANGELES DEPARTMENT OF COUNTY ENGINEER JOHN A. LAMBIE - COUNTY ENGINEER PREPARED BY SURVEY DIVISION C. E. BRUNTY - DIVISION ENGINEER SURVEYED BY R. B. HOBSOON CHECKED BY J. A. CHURCH DRAWN BY H. HOLMAN	BOUNDARY MAP OF <b>CITY PLAYGROUND</b> IN THE <b>CITY OF CUDAHY</b> FOR TOPOGRAPHY SEE SURVEY DIVISION FILE MAP NO. P.T.H-163 BASIS OF BEARINGS BEARINGS ARE BASED ON THE BEARING OF CLARA ST. PER TRACT NO. 349 M.B. 14-194-195		COUNTY SURVEYOR'S MAP NO. <b>B-5011</b> SHEET 1 OF 1 SHEET FILED 5-27 1968 <i>Stacy J. Brannaman</i> DEPUTY SURVEYED MARCH & APRIL 1968 REFERENCE F. B. 2900-41-54	REVISION NO. BY DATE
	BEARINGS ARE BASED ON THE BEARING OF CLARA ST. PER TRACT NO. 349 M.B. 14-194-195		JOB NUMBER 3024.13 INDEX MAP NO. 7	