

Found 2" iron pipe, conc. plug, & tag marked "R.E. 2059", 12" below surface. See R.S. 66-10-11, F.B. 3260-73. F.B. 3452-11

Northwest corner of parcel 25, R.S. 66-10-11. Established at record distance (0.05) from the west per F.B. 3260-73. Nothing set. F.B. 3452-11

Set nail & tin by proportion between the centerline of 25th St. West to the east & the northwest corner parcel 25, R.S. 66-10-11 to the west. F.B. 3452-11

1/4 SECTION CORNER Found County Surveyors monument marked in handhole. See F.B. 2139-76, F.B. 3227-129, F.B. 3260-65, C.S.B-831-3, C.S.B-3010-3 F.B. 3452-8

Found 2" iron pipe, conc. plug, tag marked "R.E. 2059", 12" below surface. See R.S. 66-10-11, F.B. 3260-66, F.B. 3227-130. F.B. 3452-8

PROPERTY CORNER Set County Engineers monument marked at record distance (186.00) from the south per O.R. D3455-459 F.B. 3452-7

PROPERTY CORNER Set County Engineers monument marked "4" above surface at record distance (186.00) from the south per O.R. D3455-459 F.B. 3452-9

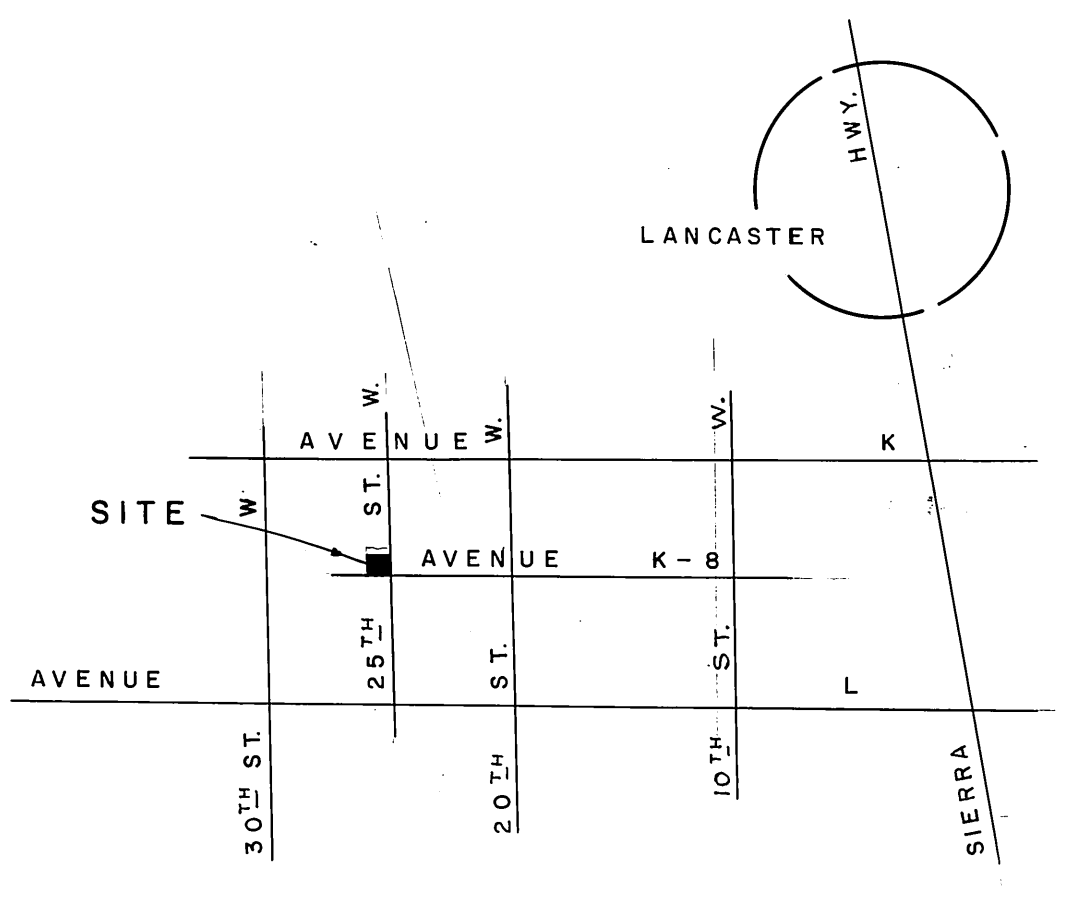
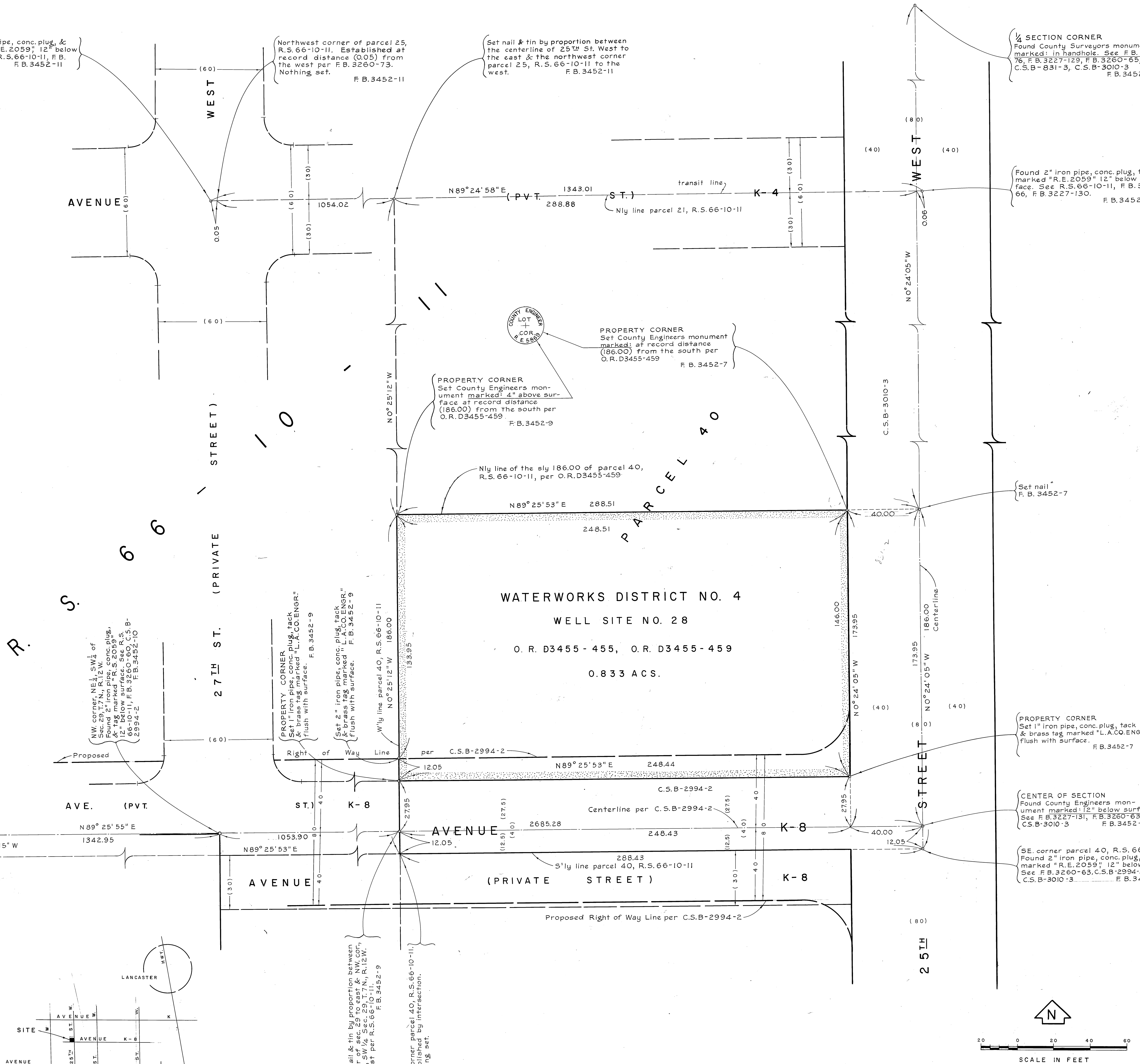
Nly line of the sly 186.00 of parcel 40, R.S. 66-10-11, per O.R. D3455-459

Set nail F.B. 3452-7

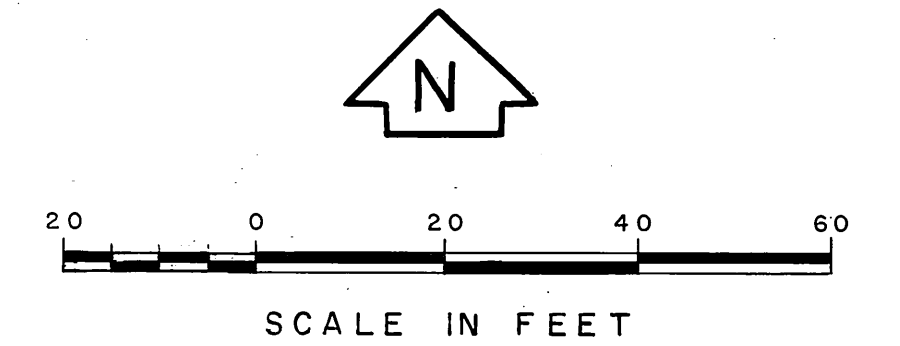
PROPERTY CORNER Set 1" iron pipe, conc. plug, tack & brass tag marked "L.A.CO.ENGR.", flush with surface. F.B. 3452-7

CENTER OF SECTION Found County Engineers monument marked "12" below surface. See F.B. 3227-131, F.B. 3260-63, C.S.B-3010-3 F.B. 3452-7

SE corner parcel 40, R.S. 66-10-11. Found 2" iron pipe, conc. plug, & tag marked "R.E. 2059", 12" below surface. See F.B. 3260-63, C.S.B-2994-2, C.S.B-3010-3 F.B. 3452-7



VICINITY MAP NOT TO SCALE



4 SECTION CORNER Found County Surveyors monument marked "12" below surface. See R.S. 66-10-11, F.B. 3260-61, F.B. 3227-175, F.B. 3452-10

NW corner, NE 1/4, SW 1/4 of Sec. 29 T.7 N., R. 12 W. Found 2" iron pipe, conc. plug, & tag marked "R.E. 2059", 12" below surface. See R.S. 66-10-11, F.B. 3260-60, C.S.B-2994-2 F.B. 3452-10

PROPERTY CORNER Set 1" iron pipe, conc. plug, tack flush with surface. F.B. 3452-9

Set 2" iron pipe, conc. plug, tack flush with surface. F.B. 3452-9

Wly line parcel 40, R.S. 66-10-11 NO 25 1/2 W 186.00

SW corner parcel 40, R.S. 66-10-11. Established by intersection. Nothing set.

Set nail & tin by proportion between center of sec. 29 to east & NW cor., NE 1/4, SW 1/4 Sec. 29 T.7 N., R. 12 W., to west per R.S. 66-10-11, F.B. 3452-9

SW corner parcel 40, R.S. 66-10-11. Established by intersection. Nothing set.

COUNTY OF LOS ANGELES DEPARTMENT OF COUNTY ENGINEER JOHN A. LAMBIE-COUNTY ENGINEER PREPARED BY SURVEY DIVISION C.E. BRUNTY-DIVISION ENGINEER SURVEYED BY J. COATES CHECKED BY W. EDMONDSON DRAWN BY G.H. BOYER	BOUNDARY MAP OF WATERWORKS DISTRICT NO. 4 WELL SITE NO. 28 BASIS OF BEARINGS THE CENTERLINE OF AVENUE K-8 AS SHOWN ON C.S.B-2994-2	COUNTY SURVEYOR'S MAP NO. B-5012	REVISION NO. BY DATE
		FILED <i>George J. Brantly</i> COUNTY ENGINEER DEPUTY MARCH 1968 SURVEYED REFERENCE F.B. 3452-7-11	JOB NUMBER 5045.02