

REVISION:
 ① Proposed Alignment of Lost Hills Rd. transferred on C.S.B-5134-2.

SCALE IN FEET
 0 100 200 300

COUNTY OF LOS ANGELES DEPARTMENT OF COUNTY ENGINEER JOHN A. LAMBIE - COUNTY ENGINEER PREPARED BY SURVEY DIVISION C. E. BRINTY - DIVISION ENGINEER SURVEYED BY R. C. DALE S. E. BARR CHECKED BY J. A. CHURCH T. ABE DRAWN BY H. HOLMAN	ALIGNMENT MAP OF DRIVER AVENUE FROM LOST HILLS ROAD TO PALO COMADO CANYON ROAD BASIS OF BEARINGS CALIFORNIA COORDINATE SYSTEM, ZONE 7		COUNTY SURVEYOR'S MAP NO. B-5014 SHEET 1 OF 3 SHEETS FILED <i>[Signature]</i> SURVEYED JUNE - DEC. 1966 & FEB. 1968 REFERENCE F.B. 3150-115-139, 157-178, 241-247 JOB NUMBER 0096.30 INDEX MAP NO. 159-057	REVISION NO. BY DATE ① M.H. 5-25-71
---	---	--	---	---

S-4102-B-22

TRIANGULATION STATION
SEMINOLE G-5
A County Surveyors monument
F. B. 2326-65

TRIANGULATION STATION
SEMINOLE K-6
A County Surveyors monument
F. B. 2326-64

A 3/4" iron pipe & cap 1" above
surface. F. B. 2326-46, 62

1/4 SECTION CORNER
Found County Engineer, monu-
ment marked in concrete. See
F. B. 2326-29 F. B. 3150-139

CLOSING CORNER
Found County Engineer, monu-
ment marked in concrete per
F. B. 2326-24 F. B. 3150-139

RANCHO LAS VIRGENES SECTION 25

LOT A

P. 7 - 218, C. F. 138, C. F. 91, F. M. 16911

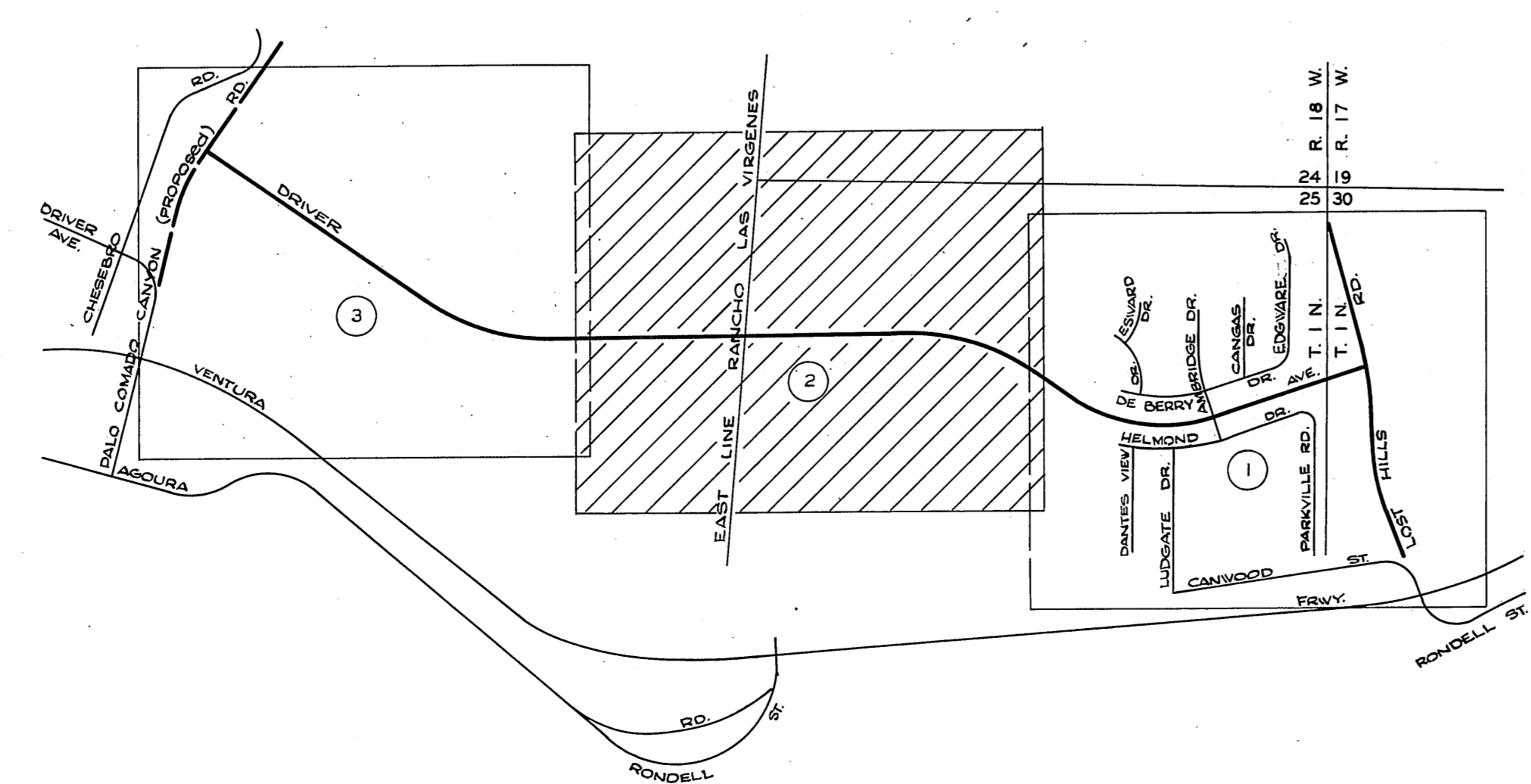
T. 1 N., R. 18 W.

MATCH LINE C.S.B-5014-3

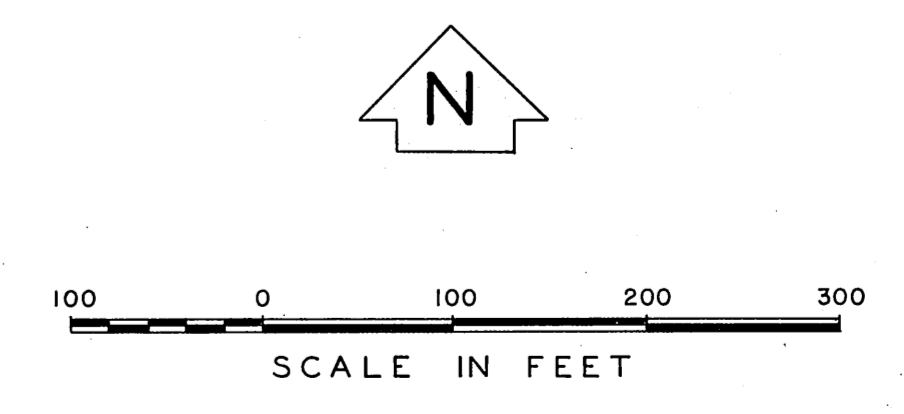
MATCH LINE C.S.B-5014-1



REVISIONS:
① Intersection of Liberty Canyon Road added per C.S.B-5100-5

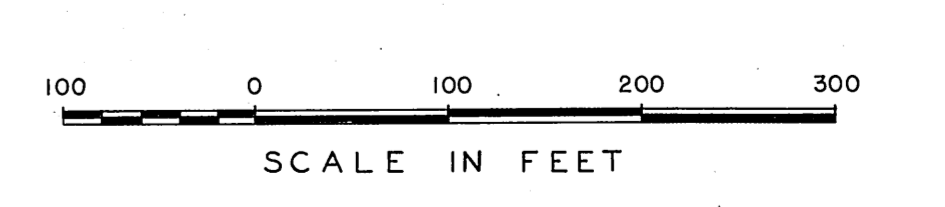
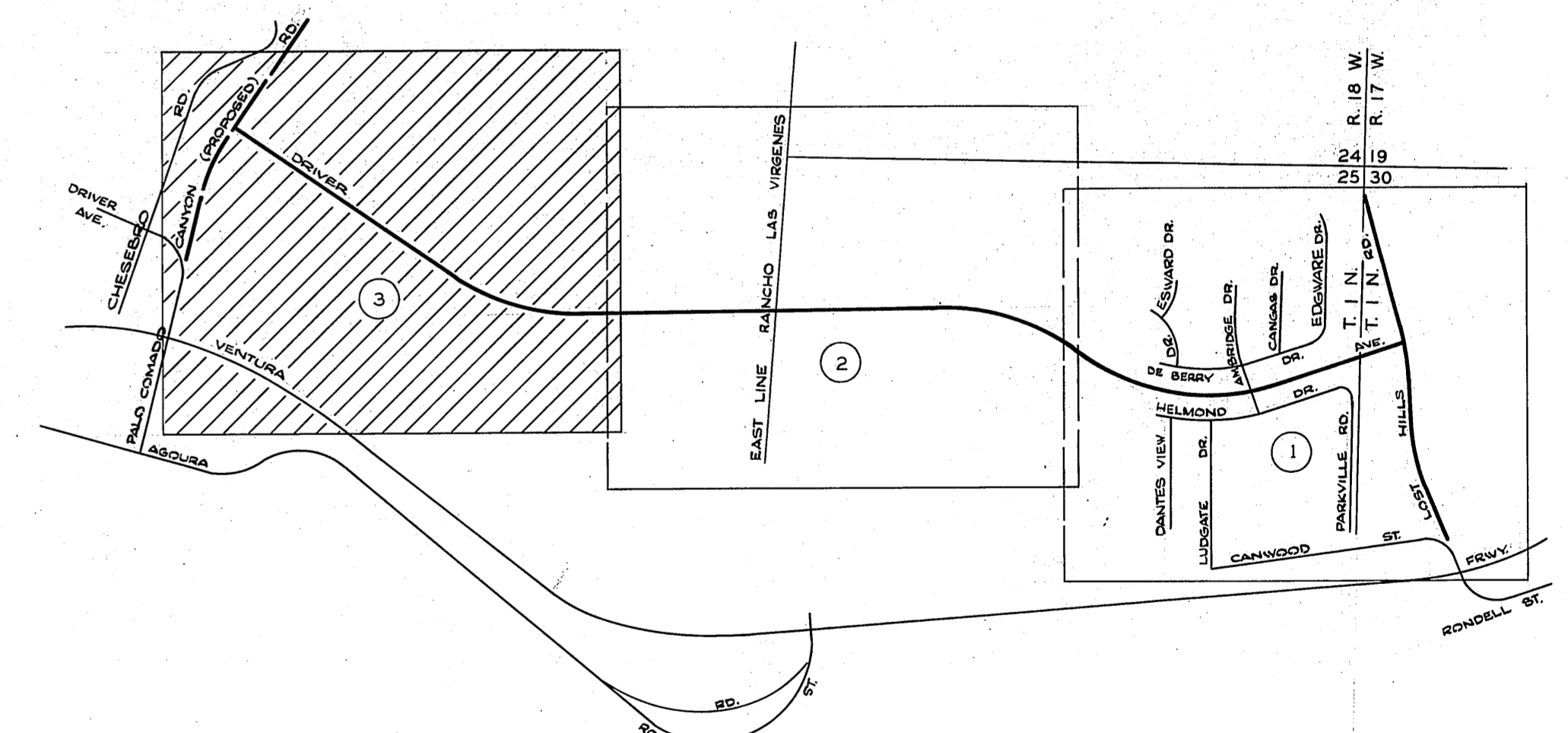
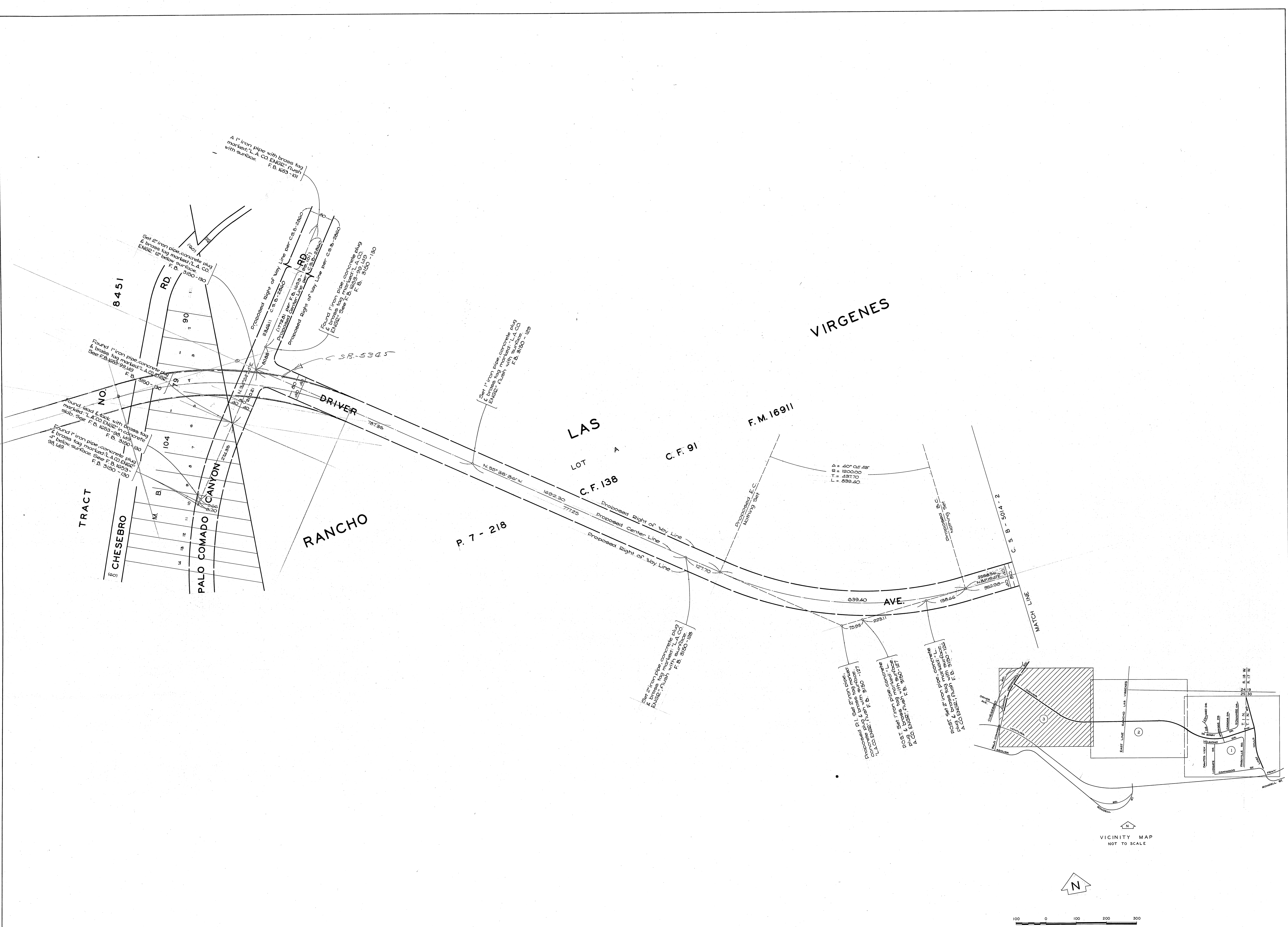


VICINITY MAP
NOT TO SCALE



COUNTY OF LOS ANGELES DEPARTMENT OF COUNTY ENGINEER JOHN A. LAMBE-COUNTY ENGINEER PREPARED BY SURVEY DIVISION C. E. BRUNTY-DIVISION ENGINEER SURVEYED BY R. C. DALE G. E. BARR CHECKED BY L. A. CHURCH T. ABE DRAWN BY H. HOLMAN	ALIGNMENT MAP OF DRIVER AVENUE FROM LOST HILLS ROAD TO PALO COMADO CANYON ROAD BASIS OF BEARINGS CALIFORNIA COORDINATE SYSTEM, ZONE 7		COUNTY SURVEYOR'S MAP NO. B-5014 SHEET 2 OF 3 SHEETS FILED 8-18-68 COUNTY ENGINEER DEPUTY SURVEYED JUNE - DEC. 1966 & FEB. 1968 REFERENCE F. B. 3150-115-139, 157-178, 241-247 JOB NUMBER 009 6. 30 INDEX MAP NO. 159-057	REVISION NO. BY DATE ① ②
---	---	--	---	-----------------------------------

C.S.B-2014-5



COUNTY OF LOS ANGELES DEPARTMENT OF COUNTY ENGINEER JOHN A LAMBIE-COUNTY ENGINEER PREPARED BY SURVEY DIVISION C. E. BRUNTY - DIVISION ENGINEER SURVEYED BY <u>R. C. DALE</u> CHECKED BY <u>G. E. BARR</u> <u>J. A. CHURCH</u> DRAWN BY <u>T. ABE</u> <u>H. HOLMAN</u>	ALIGNMENT MAP OF DRIVER AVENUE FROM LOST HILLS ROAD TO PALO COMADO CANYON ROAD BASIS OF BEARINGS CALIFORNIA COORDINATE SYSTEM, ZONE 7		COUNTY SURVEYOR'S MAP NO. B-5014 SHEET 3 OF 3 SHEETS FILED <u>3-13-68</u> <u>Sergio P. Ramirez</u> DEPUTY SURVEYED JUNE - DEC 1966 & FEB 1968 REFERENCE F.B. 3150-115-139, 157-178, 241-247 JOB NUMBER <u>0096.30</u> INDEX MAP NO. <u>159-057</u>	REVISION NO. BY DATE
	VICINITY MAP NOT TO SCALE			SCALE IN FEET
	VICINITY MAP NOT TO SCALE			SCALE IN FEET
	VICINITY MAP NOT TO SCALE			SCALE IN FEET