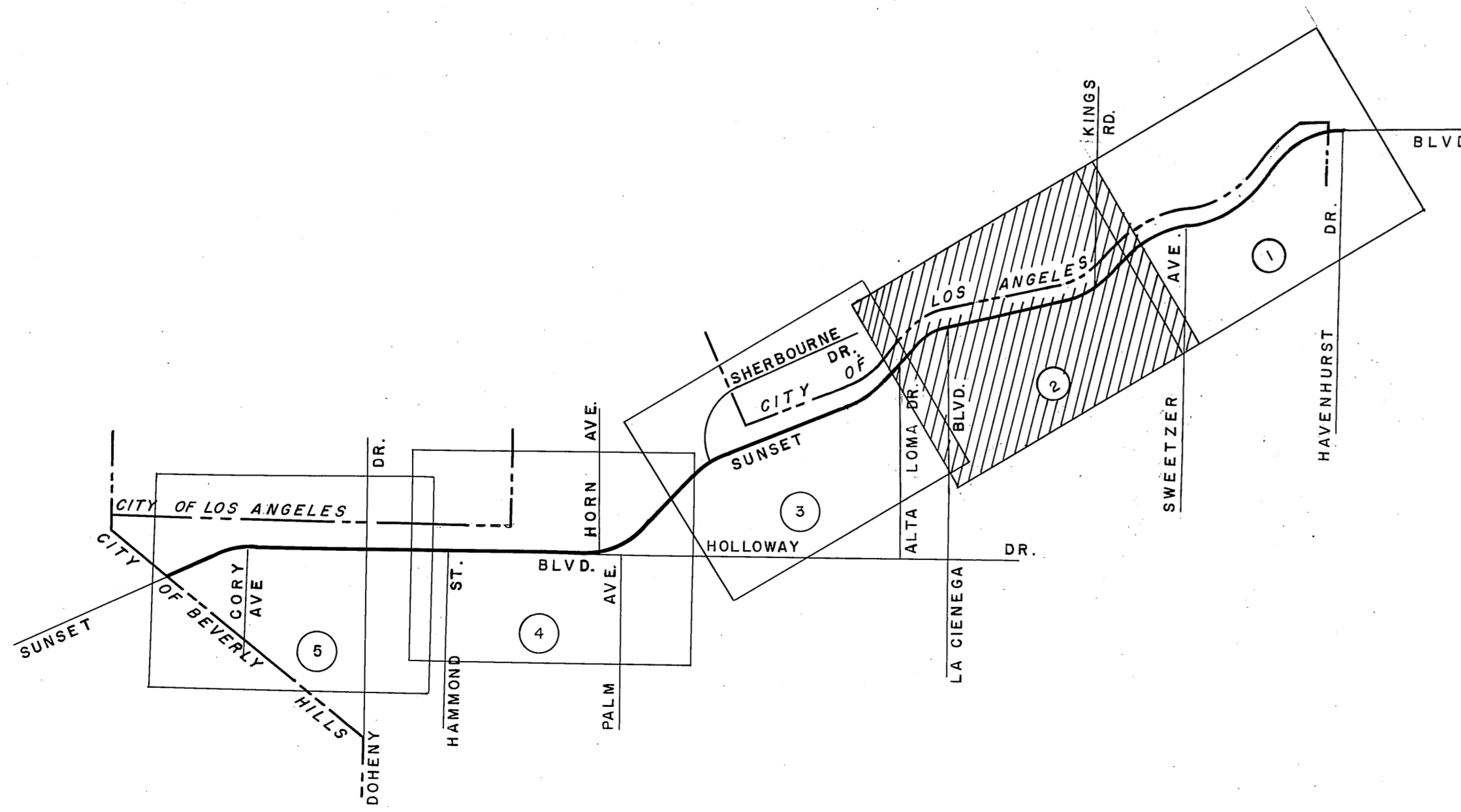
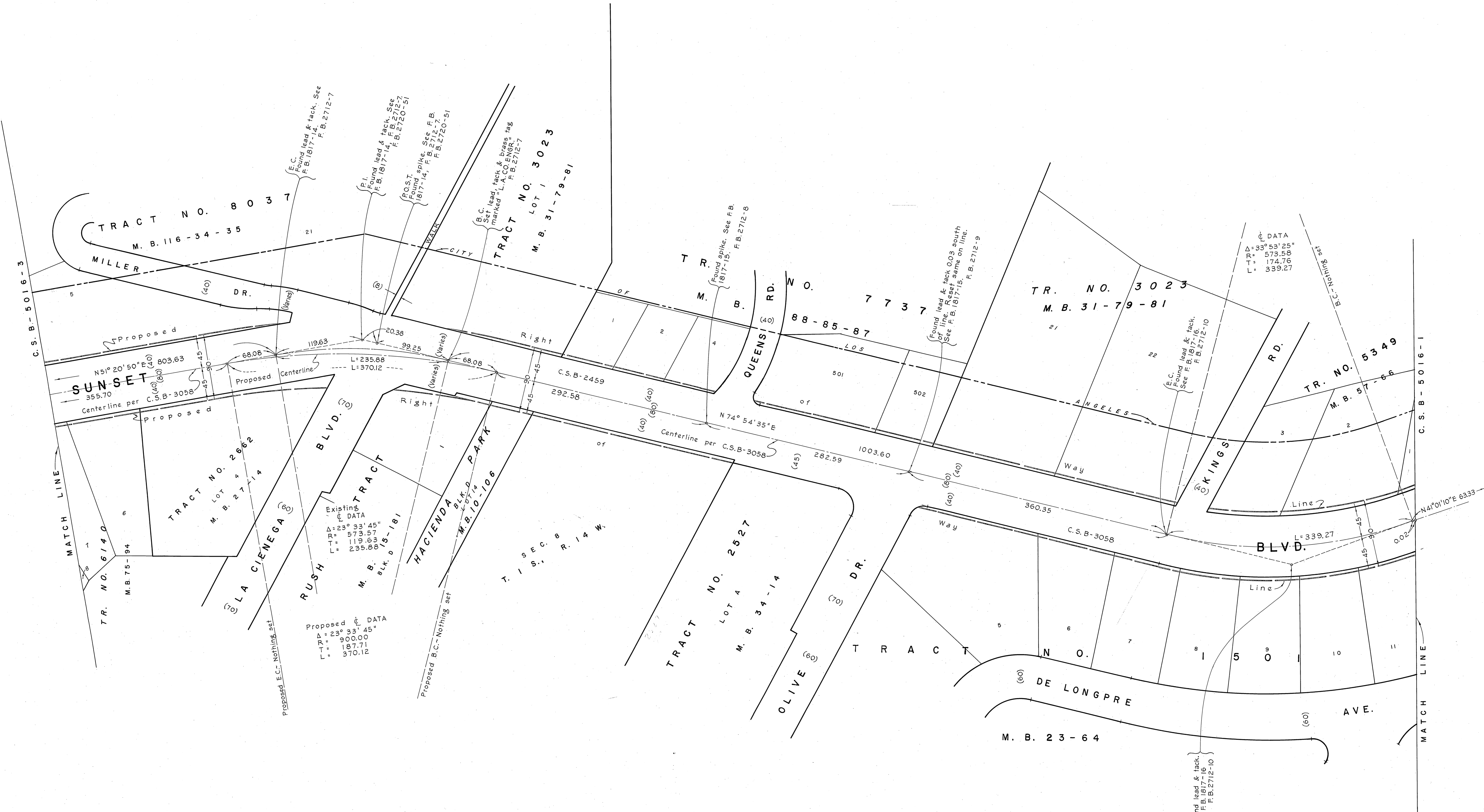
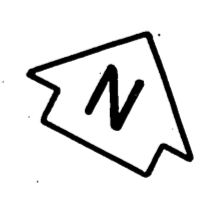
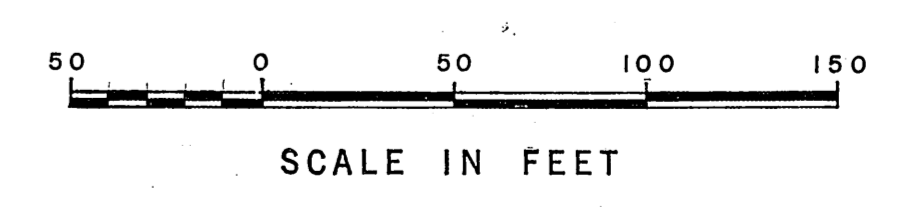


COUNTY OF LOS ANGELES DEPARTMENT OF COUNTY ENGINEER JOHN A. LAMBIE - COUNTY ENGINEER PREPARED BY SURVEY DIVISION C. E. BRUNTY - DIVISION ENGINEER SURVEYED BY E. T. MANKEY, F. E. BROOKS CHECKED BY D. S. APPELL DRAWN BY G. H. BOYER	<b>ALIGNMENT MAP OF</b> <b>SUNSET BOULEVARD</b> FROM <b>HAVENHURST DRIVE</b> TO <b>SIERRA DRIVE</b> <small>BASIS OF BEARINGS</small>		COUNTY SURVEYOR'S MAP NO. <b>B-5016</b>	REVISION NO. BY DATE	
	SHEET 1 OF 5 SHEETS FILED 1-6, 1969 <i>Henry J. [Signature]</i> SURVEYED 1961 THRU 1963		REFERENCE F. B. 2710, F. B. 2711 F. B. 2712, F. B. 2720		
	CALIFORNIA COORDINATE SYSTEM, ZONE 7		JOB NUMBER 007435	INDEX MAP NO. 22	



VICINITY MAP NOT TO SCALE

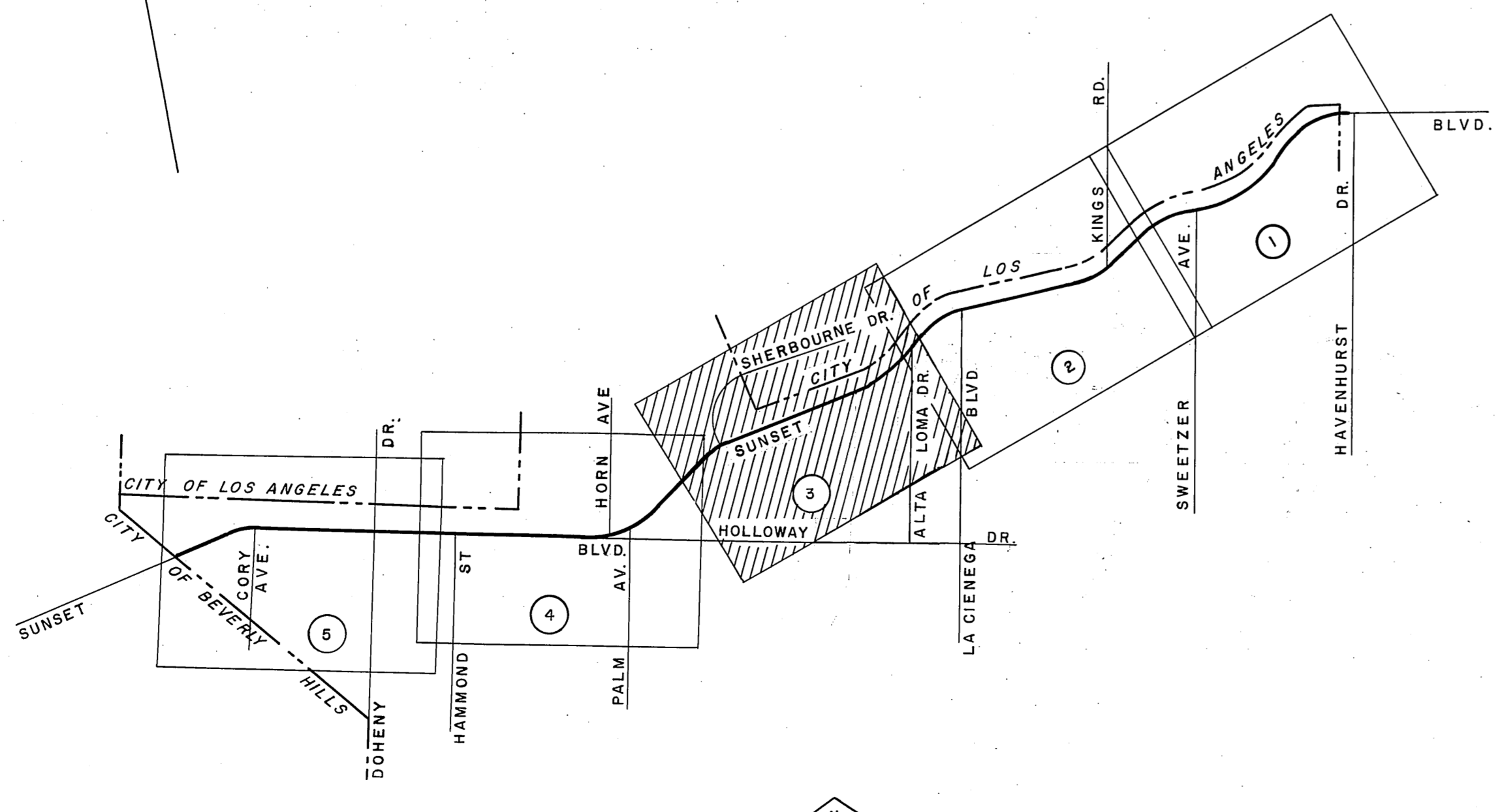
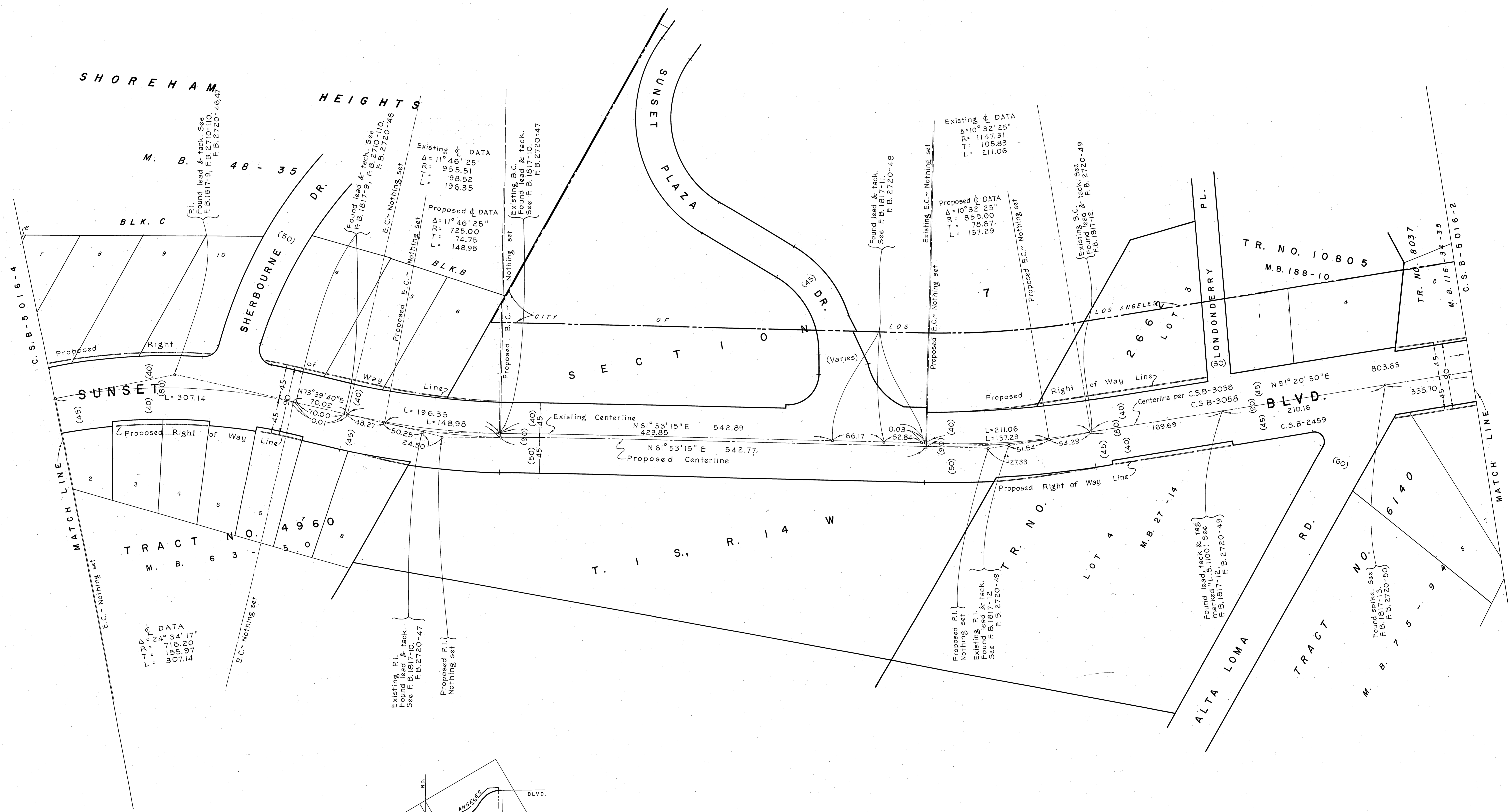


COUNTY OF LOS ANGELES  
 DEPARTMENT OF COUNTY ENGINEER  
 JOHN A. LAMBIE - COUNTY ENGINEER  
 PREPARED BY  
 SURVEY DIVISION  
 C. E. BRUNTY - DIVISION ENGINEER  
 SURVEYED BY E. T. MANKE, P.E. BROOKS  
 CHECKED BY D. SAPPPELL  
 DRAWN BY S. H. BOYER

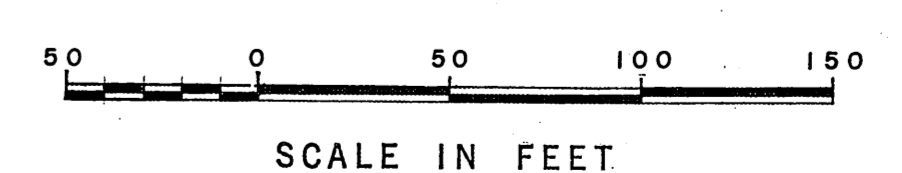
ALIGNMENT MAP OF  
**SUNSET BOULEVARD**  
 FROM  
**HAVENHURST DRIVE**  
 TO  
**SIERRA DRIVE**  
 BASIS OF BEARINGS  
 CALIFORNIA COORDINATE SYSTEM, ZONE 7

COUNTY SURVEYOR'S MAP NO. <b>B-5016</b>		REVISION
SHEET 2 OF 5 SHEETS		NO. BY DATE
FILED	1963	
1961 THRU 1963		
REFERENCE		
F.B. 2710, F.B. 2711		
F.B. 2712, F.B. 2720		
JOB NUMBER 007435	INDEX MAP NO. 22	

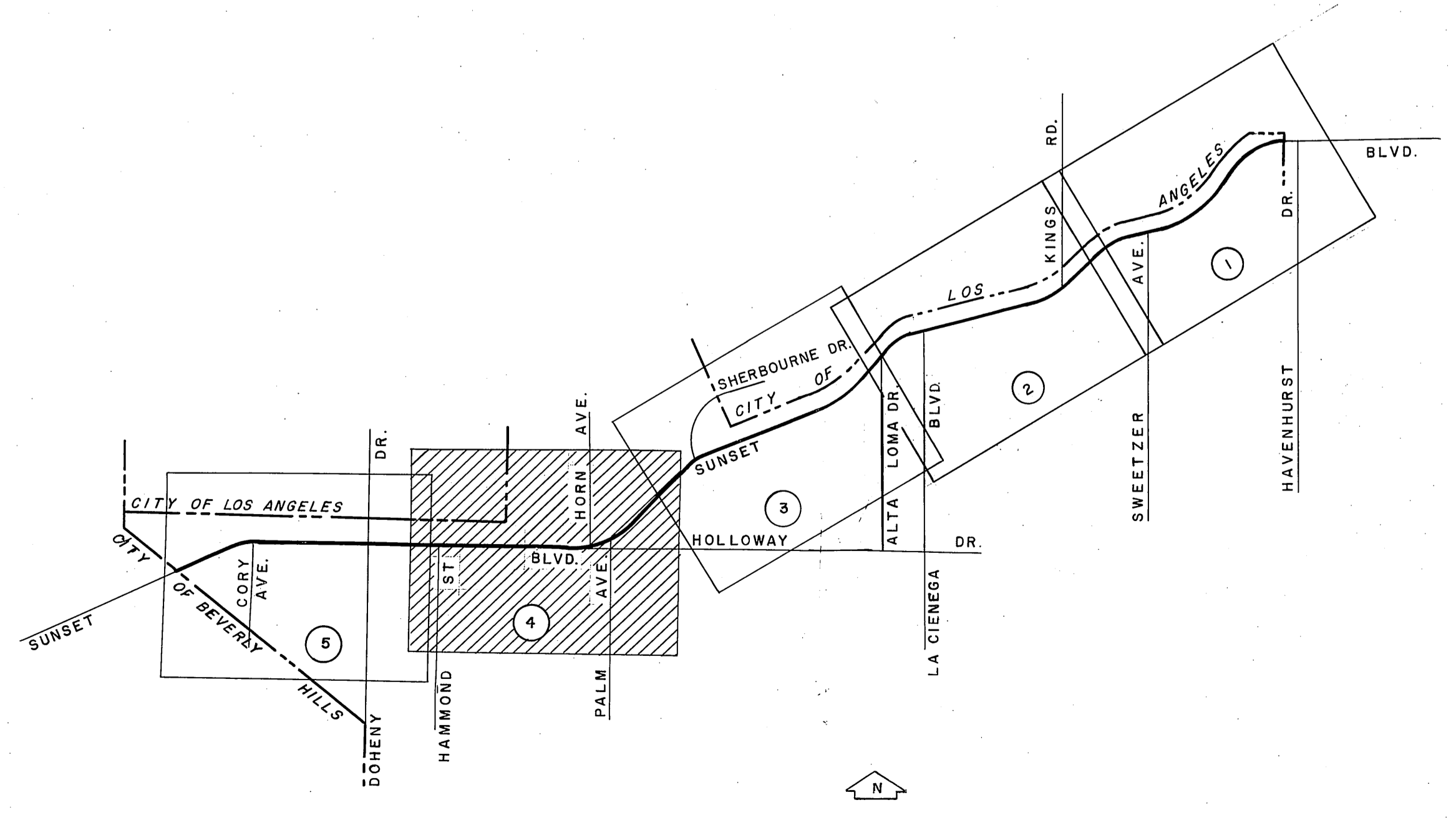
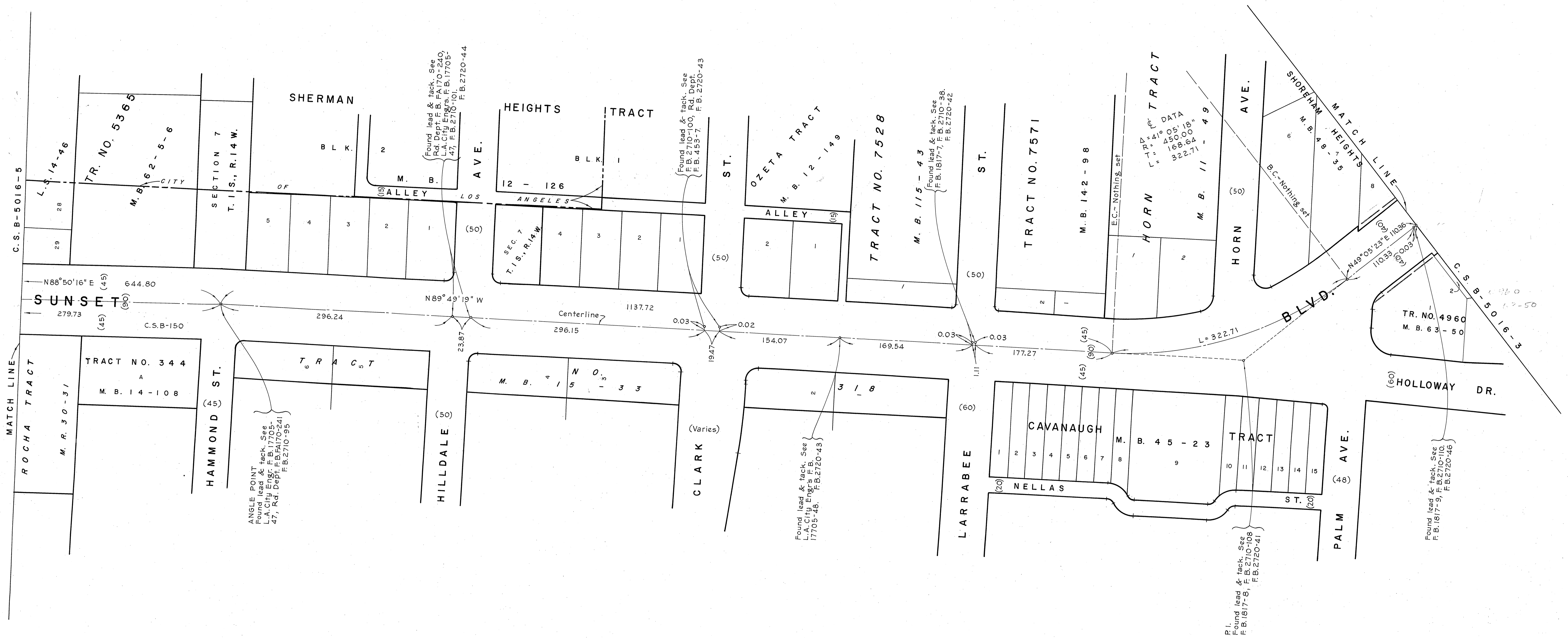




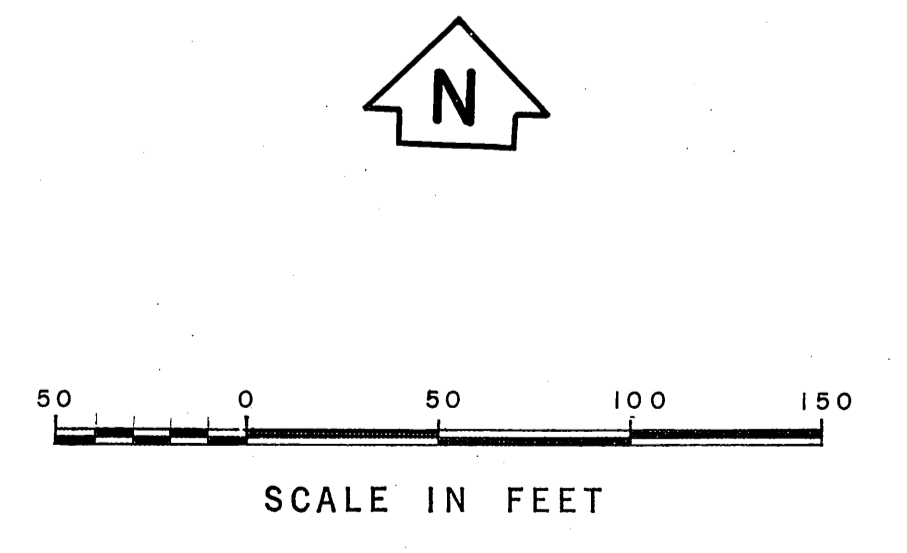
VICINITY MAP  
NOT TO SCALE



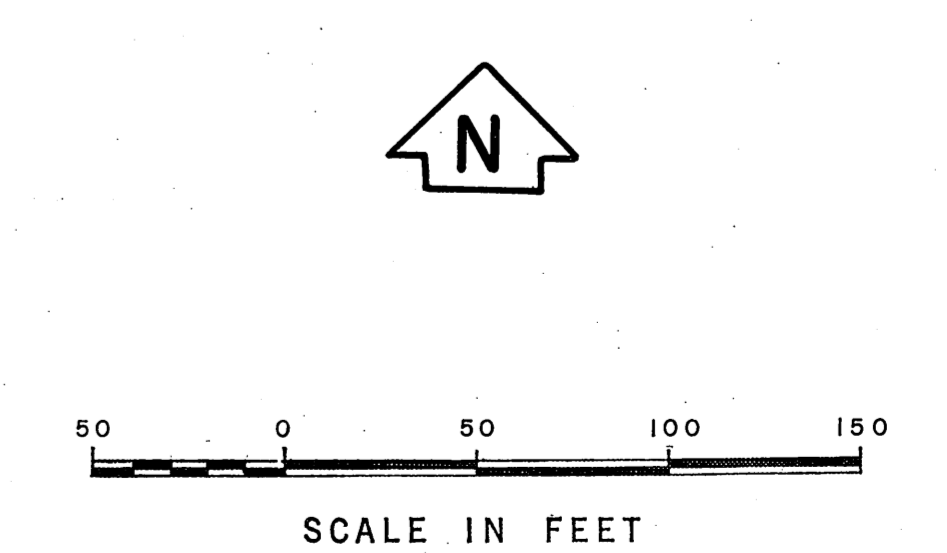
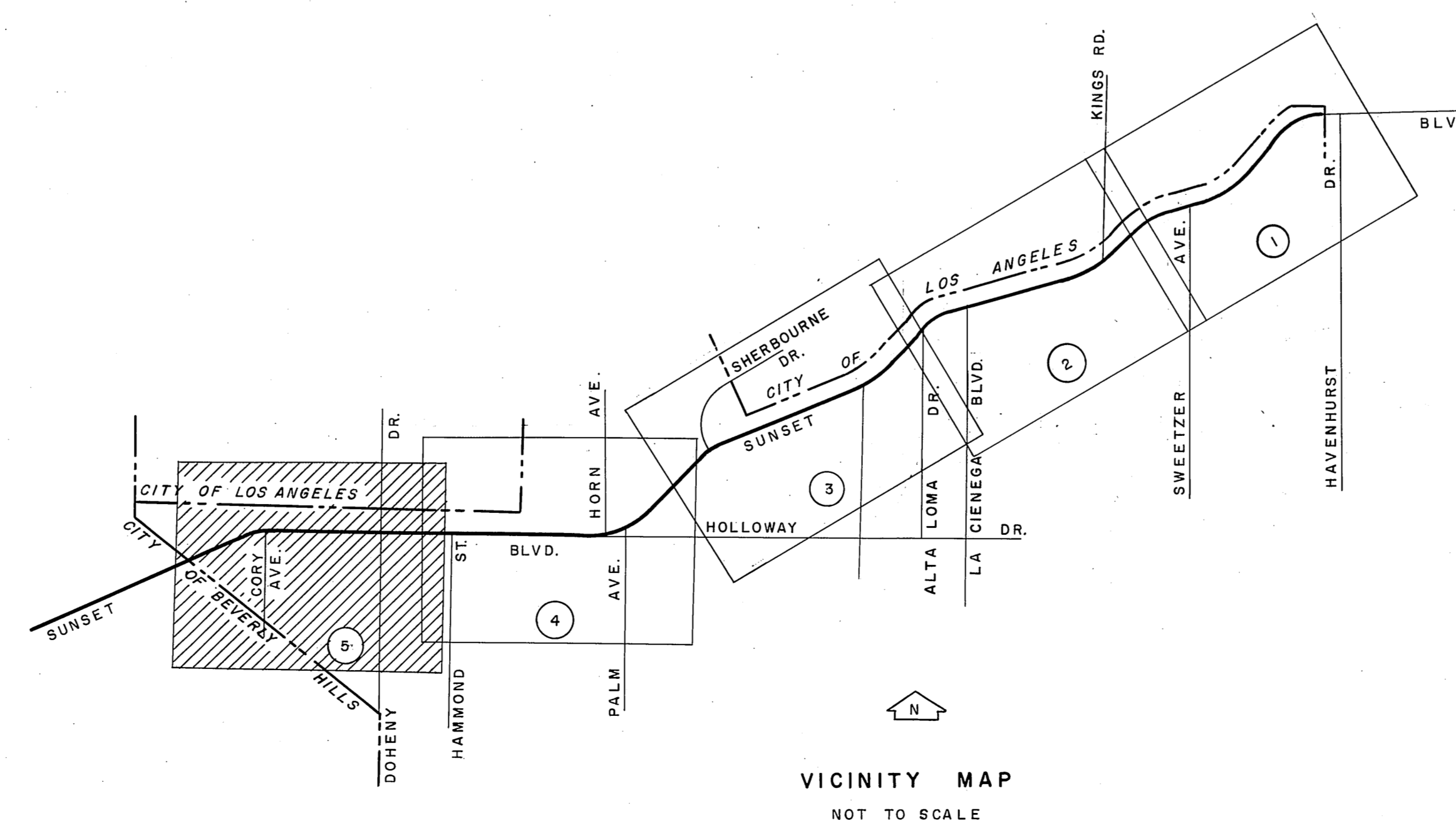
COUNTY OF LOS ANGELES <b>DEPARTMENT OF COUNTY ENGINEER</b> JOHN A. LAMBIE - COUNTY ENGINEER PREPARED BY C. E. BRINBY - DIVISION ENGINEER SURVEYED BY E.T. MANKEY, F.E., BROOKS CHECKED BY D. RAPPALL DRAWN BY G.H. BOYER	ALIGNMENT MAP OF <b>SUNSET BOULEVARD</b> FROM HAVENHURST DRIVE TO SIERRA DRIVE BASIS OF BEARINGS CALIFORNIA COORDINATE SYSTEM, ZONE 7		COUNTY SURVEYOR'S MAP NO. <b>B-5016</b> SHEET 3 OF 5 SHEETS FILED 1961 DEPT.	REVISION NO. BY DATE
	1961 THRU 1963 REFERENCE F.B. 2710, F.B. 2711 F.B. 2712, F.B. 2720		JOB NUMBER 007435	INDEX MAP NO. 22
	COUNTY ENGINEER <i>(Signature)</i> DEPUTY			
	SURVEYED 1961 THRU 1963			
	CHECKED BY D. RAPPALL			



VICINITY MAP NOT TO SCALE



COUNTY OF LOS ANGELES DEPARTMENT OF COUNTY ENGINEER JOHN A. LAMBIE - COUNTY ENGINEER PREPARED BY SURVEY DIVISION C. E. BRUNTY - DIVISION ENGINEER SURVEYED BY E. T. MANKEY, J. E. BROOKS CHECKED BY D. SAPPPELL DRAWN BY S. H. BOYER	ALIGNMENT MAP OF <b>SUNSET BOULEVARD</b> FROM HAVENHURST DRIVE TO SIERRA DRIVE BASIS OF BEARINGS CALIFORNIA COORDINATE SYSTEM, ZONE 7		COUNTY SURVEYOR'S MAP NO. <b>B-5016</b> SHEET 4 OF 5 SHEETS FILED: <i>1/24/62</i> <i>Samuel J. Brumby</i> DEPUTY SURVEYED 1961 THRU 1963 REFERENCE F.B. 2710, F.B. 2711 F.B. 2712, F.B. 2720 JOB NUMBER 0074.35 INDEX MAP NO. 22	REVISION NO. BY DATE



COUNTY OF LOS ANGELES DEPARTMENT OF COUNTY ENGINEER JOHN A. LAMBIE - COUNTY ENGINEER PREPARED BY SURVEY DIVISION C. E. BRUNTY - DIVISION ENGINEER SURVEYED BY E. T. MANKEY, F. E. BROOKS CHECKED BY D. SAPPPELL DRAWN BY G. H. BOYER	ALIGNMENT MAP OF <b>SUNSET BOULEVARD</b> FROM <b>HAVENHURST DRIVE</b> TO <b>SIERRA DRIVE</b> BASIS OF BEARINGS CALIFORNIA COORDINATE SYSTEM, ZONE 7		COUNTY SURVEYOR'S MAP NO. <b>B-5016</b> SHEET 5 OF 5 SHEETS FILED: <i>[Signature]</i> 12-19-62 DEPUTY	REVISION NO. BY DATE
	SURVEYED 1961 THRU 1963		REFERENCE F. B. 2710, F. B. 2711 F. B. 2712, F. B. 2720	
	JOB NUMBER 0 7 4 3 5		INDEX MAP NO. 22	