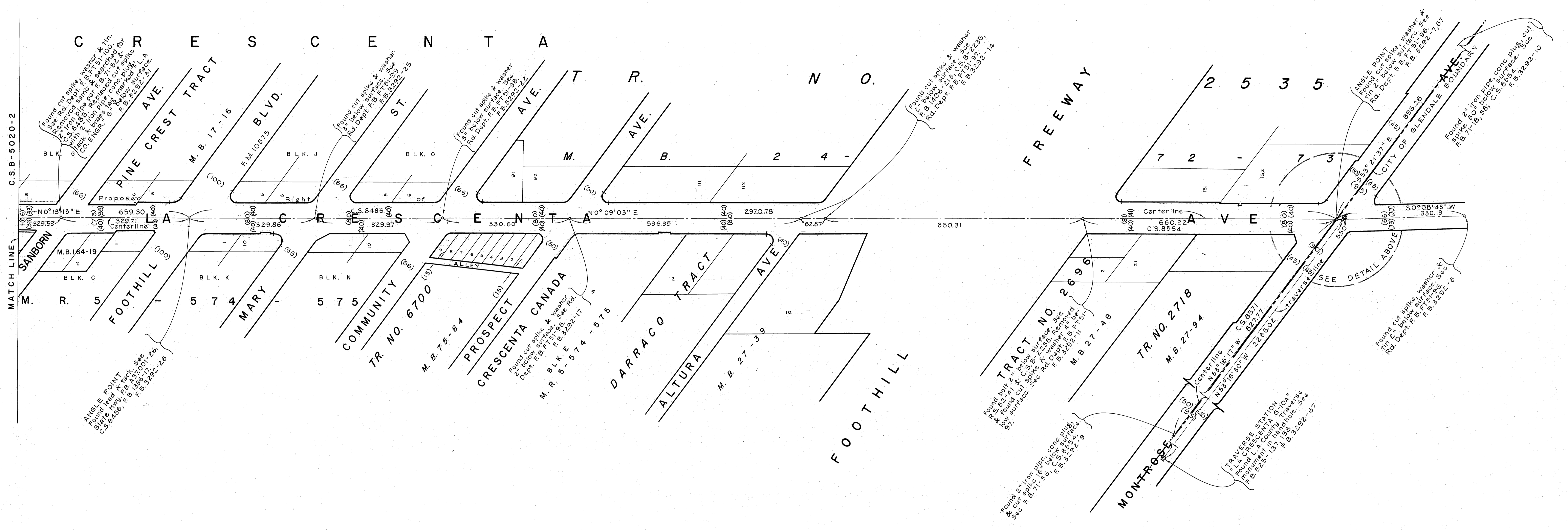
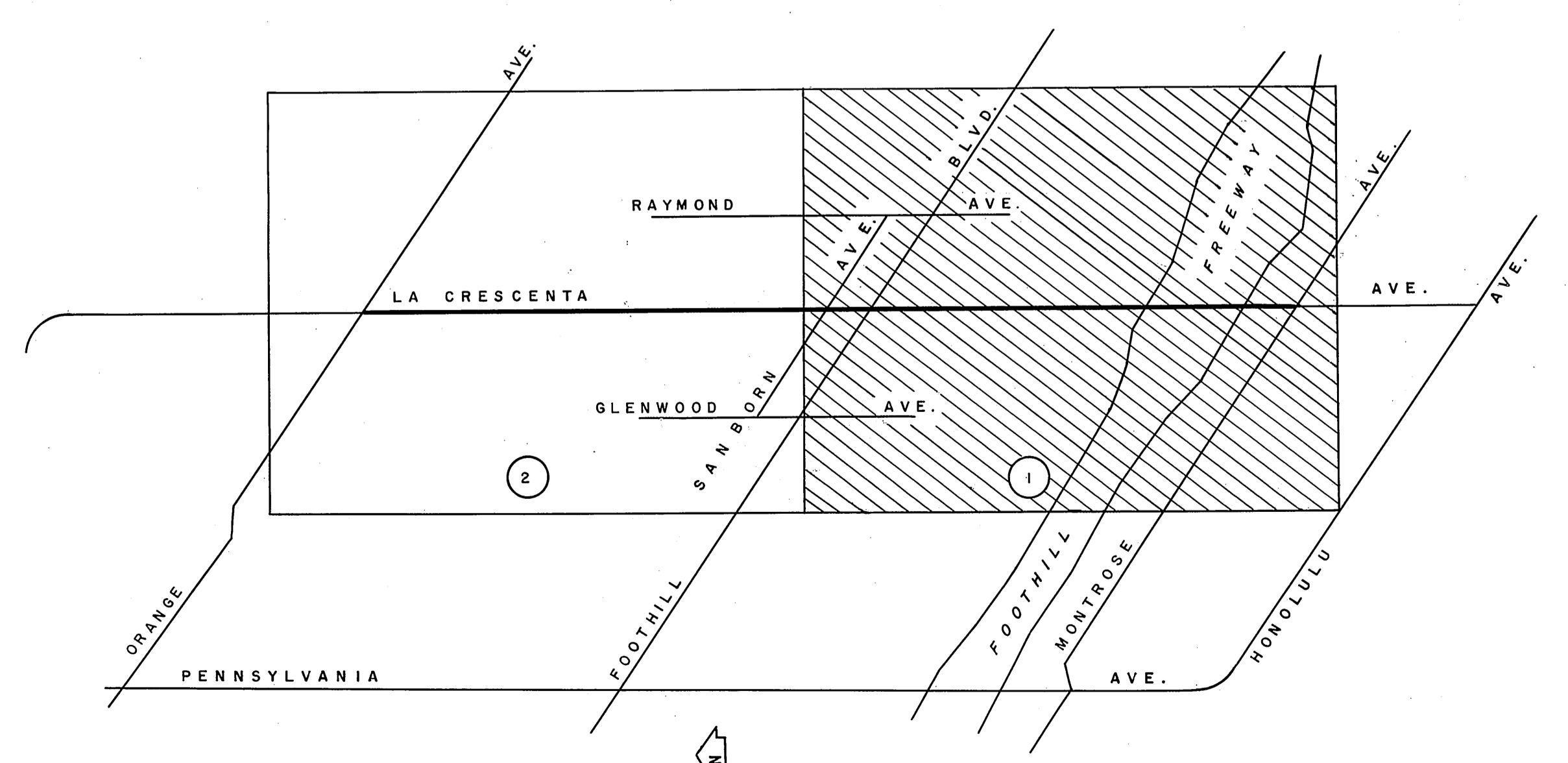


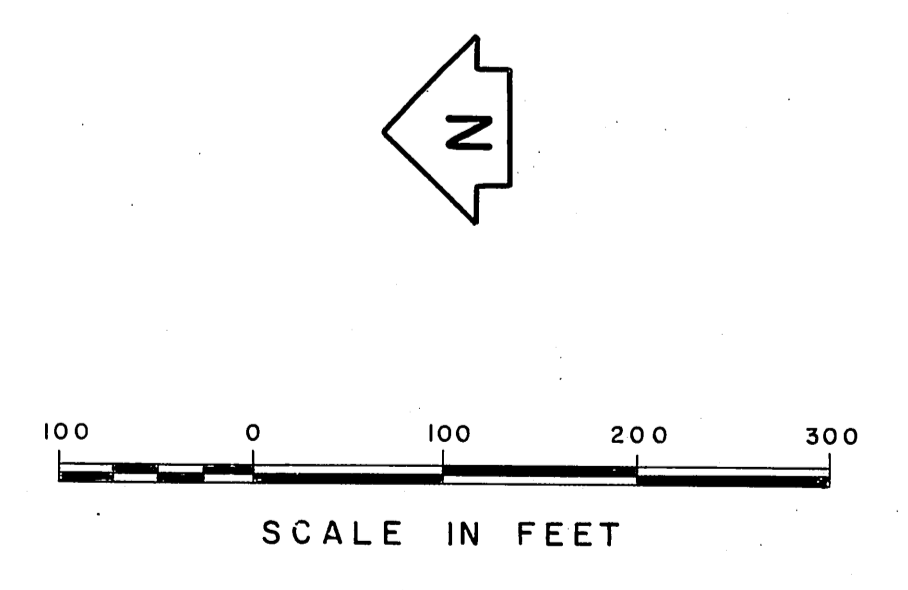
DETAIL NOT TO SCALE



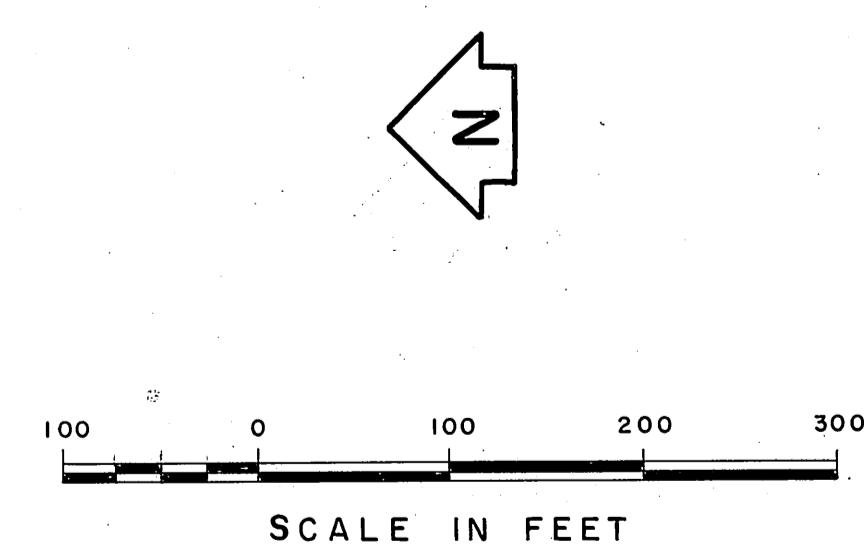
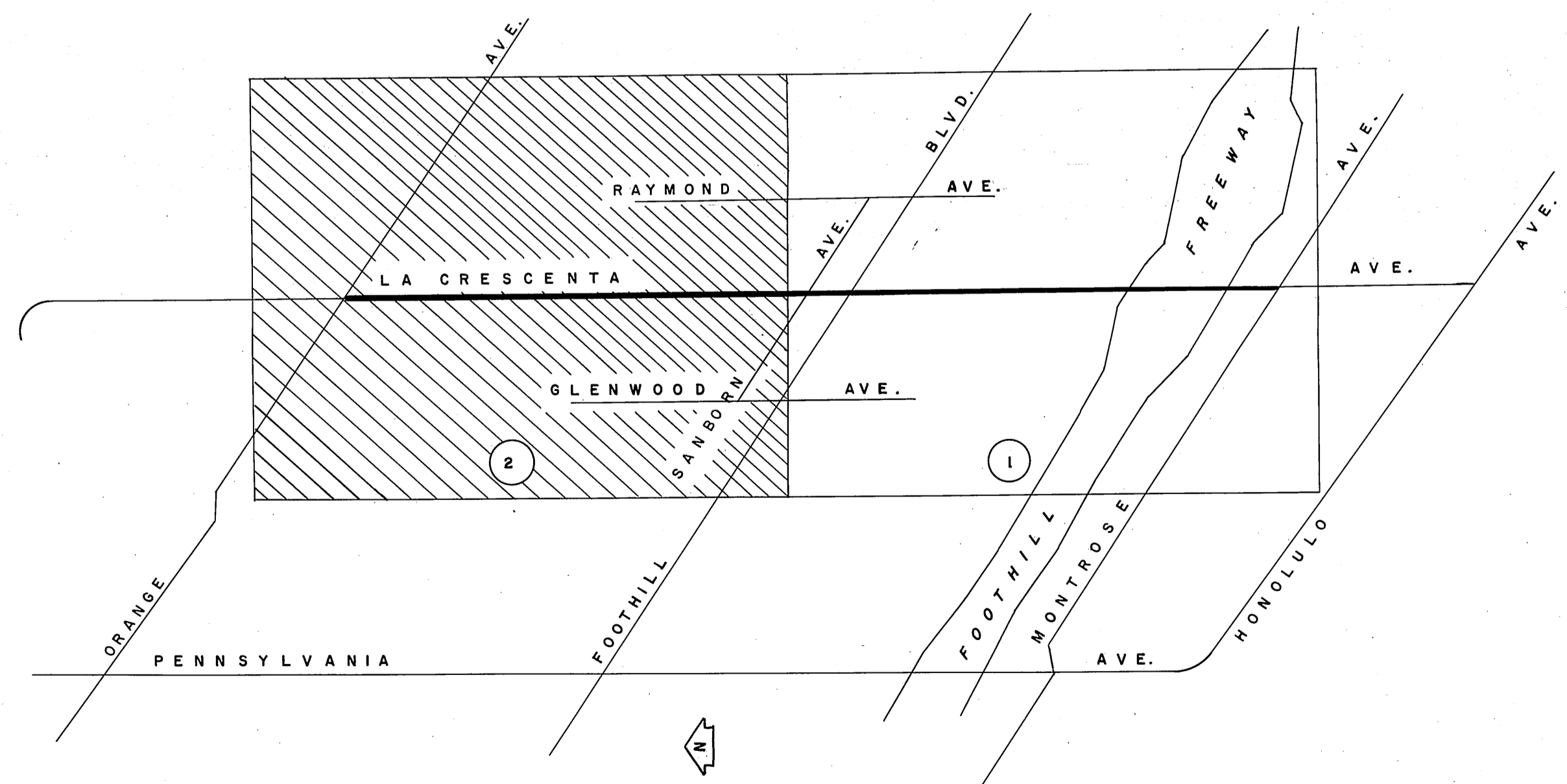
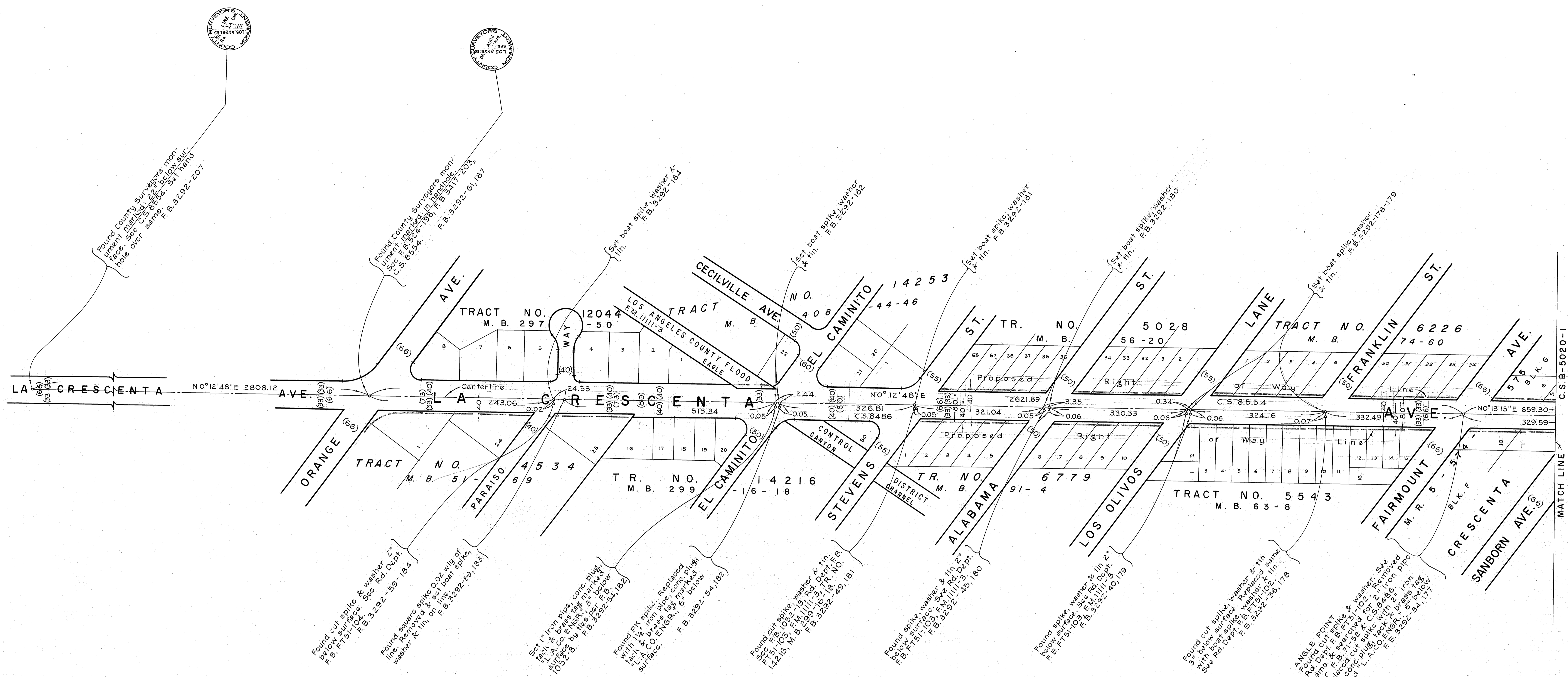
REVISIONS:  
① Cadastral Data Revised.



VICINITY MAP NOT TO SCALE



COUNTY OF LOS ANGELES DEPARTMENT OF COUNTY ENGINEER JOHN A. LAMBIE - COUNTY ENGINEER PREPARED BY SURVEY DIVISION C.E. SMUNTY-DIVISION ENGINEER SURVEYED BY W.J. VOGEL CHECKED BY W.A. EDMONDSON DRAWN BY G.H. BOYER	ALIGNMENT MAP OF <b>LA CRESCENTA AVENUE</b> FROM <b>MONTROSE AVENUE</b> TO <b>ORANGE AVENUE</b> BASIS OF BEARINGS CALIFORNIA COORDINATE SYSTEM, ZONE 7		COUNTY SURVEYOR'S MAP NO. <b>B-5020</b> SHEET 1 OF 2 SHEETS FILED <i>B-30</i> 1968 DEPUTY	REVISIONS NO. BY DATE ① A.M. 10-12-77
	SURVEYED APRIL, 1968 REFERENCE F.B. 3292-7-67, 175-207		JOB NUMBER 0097.26	INDEX MAP NO. 51
	TRAVERSE STATION "LA CRESCENTA H-11" Found L.A. County Traverse monument in handhole. See F.B. 525-139, 140. F.B. 3292-67			
	ANGLE POINT Found cut spike, washer & tin 2" below surface. See Rd. Dept. F.B. FTB-96. F.B. 3292-7, 67			



COUNTY OF LOS ANGELES DEPARTMENT OF COUNTY ENGINEER JOHN A. LAMBIE - COUNTY ENGINEER PREPARED BY SURVEY DIVISION C. E. BRUNTY - DIVISION ENGINEER SURVEYED BY <u>W. J. YOGIE</u> CHECKED BY <u>W. A. EDMONDSON</u> DRAWN BY <u>G. H. BOYER</u>	ALIGNMENT MAP OF <b>LA CRESCENTA AVENUE</b> FROM <b>MONTROSE AVENUE</b> TO <b>ORANGE AVENUE</b> BASIS OF BEARINGS CALIFORNIA COORDINATE SYSTEM, ZONE 7		COUNTY SURVEYOR'S MAP NO. <b>B-5020</b> SHEET 2 OF 2 SHEETS FILED <u>8-30</u> 1968 <u>George J. Brumby</u> DEPUTY SURVEYED APRIL, 1968 REFERENCE F. B. 3292-7-67, 175-207 JOB NUMBER 0097.26 INDEX MAP NO. 51	REVISIONS NO. BY DATE