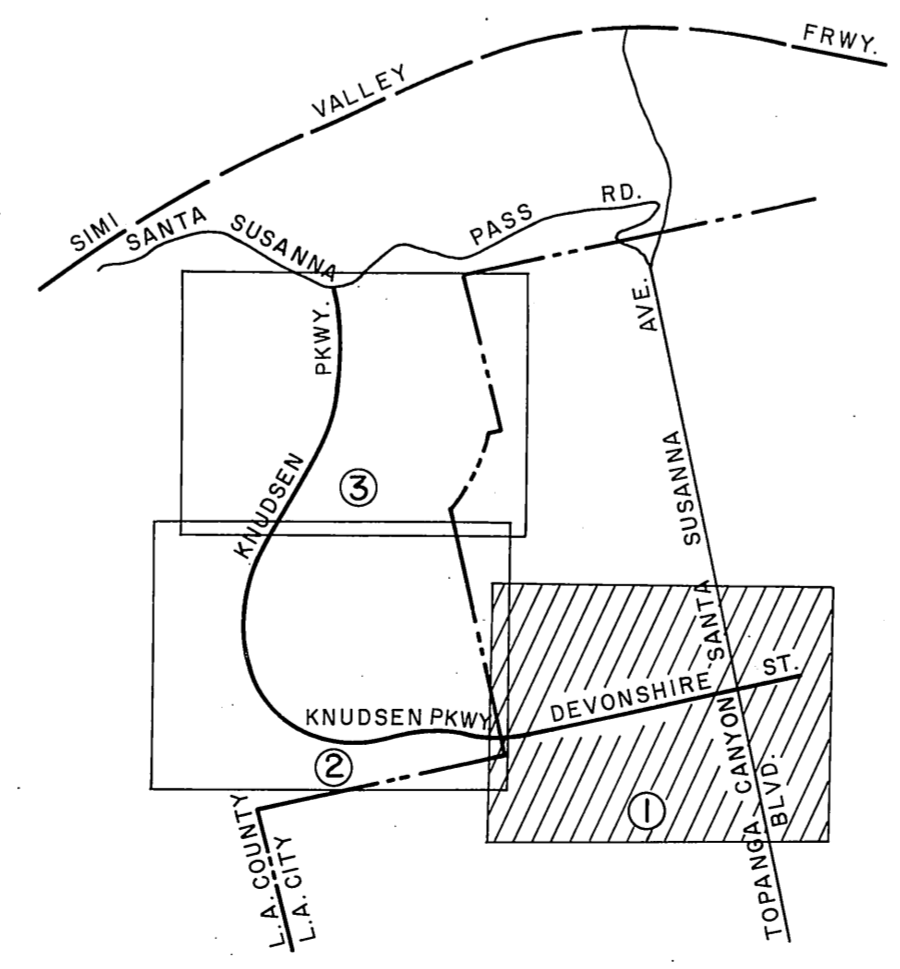


SECTION 13
T. 2 N., R. 17 W.
LOT 2

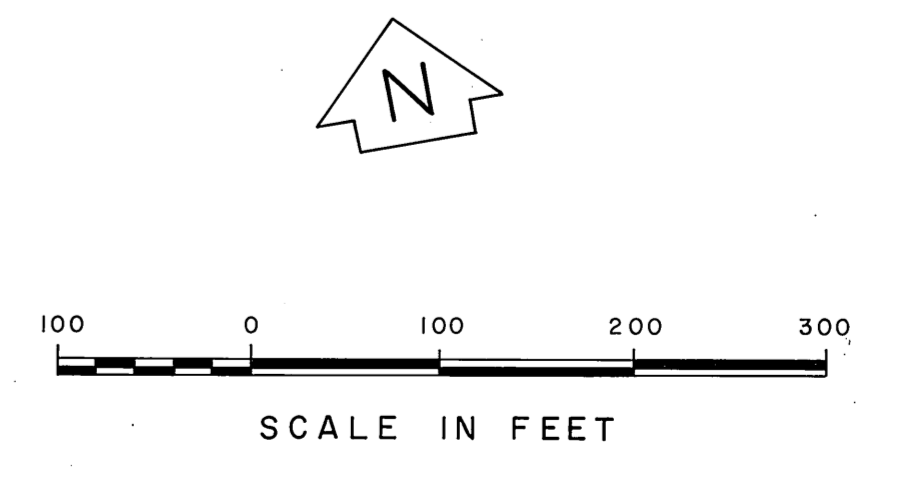
CHATSWORTH

PARK

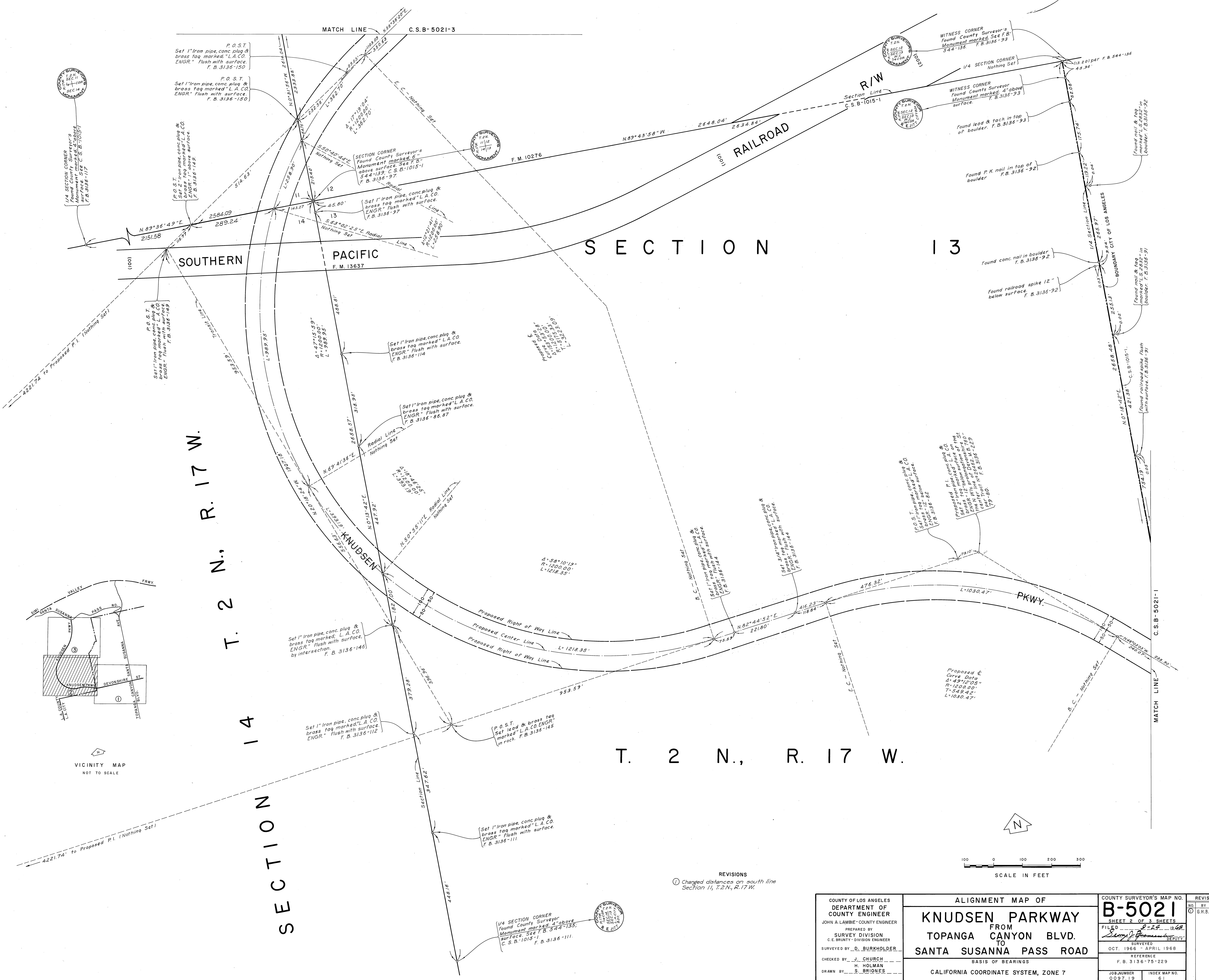


TRIANGULATION STATION CHATSWORTH K-7
Found standard Los Angeles City Triangulation Monument marked in handhole. See Los Angeles City F.B. 10658-20. F.B. 3156-140

TRAVERSE STATION CHATSWORTH L-7B
Found standard Los Angeles City Traverse Monument marked in handhole. See Los Angeles City F.B. 17004-35, 12919-18 & F.B. 3136-139



COUNTY OF LOS ANGELES DEPARTMENT OF COUNTY ENGINEER JOHN A. LAMBIE - COUNTY ENGINEER PREPARED BY SURVEY DIVISION C.E. BRUNTY - DIVISION ENGINEER SURVEYED BY <u>D. BURKHOLDER</u> CHECKED BY <u>J. CHURCH</u> H. HOLMAN DRAWN BY <u>S. BRIONES</u>	ALIGNMENT MAP OF KNUDSEN PARKWAY FROM TOPONGA CANYON BLVD. TO SANTA SUSANNA PASS ROAD BASIS OF BEARINGS CALIFORNIA COORDINATE SYSTEM, ZONE 7		COUNTY SURVEYOR'S MAP NO. B-5021 SHEET 1 OF 3 SHEETS FILED <u>9-24-1968</u> <u>Clayton J. Brunty</u> DEPUTY SURVEYED OCT. 1966 - APRIL 1968 REFERENCE F.B. 3136-76-229	REVISION NO. BY DATE
	JOB NUMBER 0097.19		INDEX MAP NO. 61	



T. 2 N., R. 17 W.

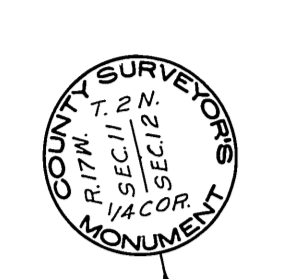
R. 17 W. T. 2 N.

SECTION 14

SECTION 13

REVISIONS
 ① Changed distances on south line Section 14, T.2N., R.17W.

COUNTY OF LOS ANGELES DEPARTMENT OF COUNTY ENGINEER JOHN A. LAMBIE - COUNTY ENGINEER PREPARED BY SURVEY DIVISION C. E. BRUNTY - DIVISION ENGINEER SURVEYED BY <u>D. BURKHOLDER</u> CHECKED BY <u>H. CHURCH</u> DRAWN BY <u>S. BRIONES</u>	ALIGNMENT MAP OF KNUDSEN PARKWAY FROM TOPANGA CANYON BLVD. TO SANTA SUSANNA PASS ROAD BASIS OF BEARINGS CALIFORNIA COORDINATE SYSTEM, ZONE 7	COUNTY SURVEYOR'S MAP NO. B-5021	REVISION NO. BY DATE ① G.R.B. 8-12-70
		SHEET 2 OF 3 SHEETS FILED <u>2-27-1968</u> <u>John A. Lambie</u> DEPUTY SURVEYED OCT. 1966 - APRIL 1968 REFERENCE F. B. 3136-75-229	JOB NUMBER 0097-19 INDEX MAP NO. 61



1/4 SECTION CORNER
Found corner
Monument
F.B. 3136-122

Set 1" iron pipe, conc. plug & brass tag marked "L.A. CO. ENGR." flush with surface.
F.B. 3136-122

SECTION 12

Section Line
N. 0° 31' 56" W. 2614.04'
2333.86'

MATCH LINE C.S.B-5021-2

SANTA SUSANNA PASS RD.

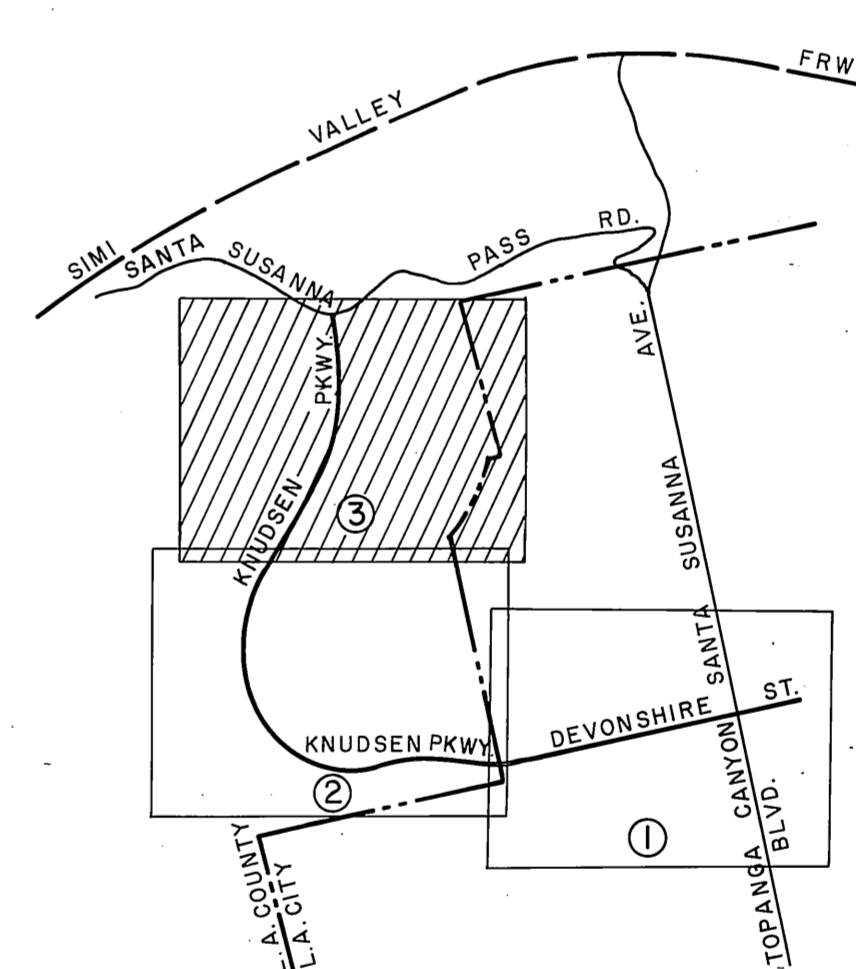
SANTA SUSANNA PASS RD.

KNUDSEN PARKWAY

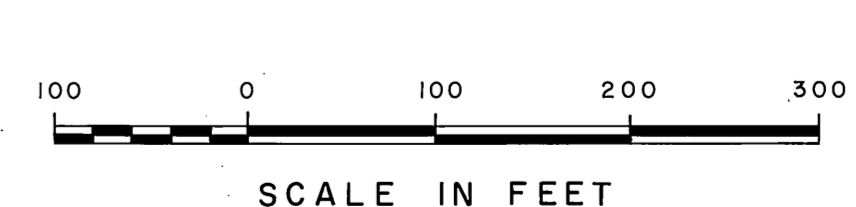
NOTE: ALIGNMENT OF THE SECONDARY HIGHWAY AS PROPOSED ON THE WASHINGTON HIGHWAY HIGHWAYS NOT ESTABLISHED SEPTEMBER 1968

REVISIONS:
① Proposed Right of Way Lines of Santa Susanna Pass Rd added per C.S.B-5218-2.

T. 2 N., R. 17 W.



VICINITY MAP NOT TO SCALE



COUNTY OF LOS ANGELES DEPARTMENT OF COUNTY ENGINEER JOHN A. LAMBIE - COUNTY ENGINEER PREPARED BY SURVEY DIVISION C. E. BRUNTZ - DIVISION ENGINEER SURVEYED BY D. BURKHOLDER CHECKED BY J. CHURCH H. HOLMAN DRAWN BY S. BRIONES	ALIGNMENT MAP OF KNUDSEN PARKWAY FROM TOPANGA CANYON BLVD TO SANTA SUSANNA PASS ROAD BASIS OF BEARINGS CALIFORNIA COORDINATE SYSTEM ZONE 7		COUNTY SURVEYOR'S MAP-NO. B-5021 SHEET 3 OF 3 SHEETS FILED 5-22 1968 SURVEYED OCT. 1966 - APRIL 1968 REFERENCE F.B. 3136-75-229 JOB NUMBER 0097.19 INDEX MAP NO. 61	REVISION NO. BY DATE 1 S.A.B. 5/7/68
	COUNTY SURVEYOR'S SEAL C. E. BRUNTZ COUNTY SURVEYOR LOS ANGELES COUNTY F.B. 3136-122			