

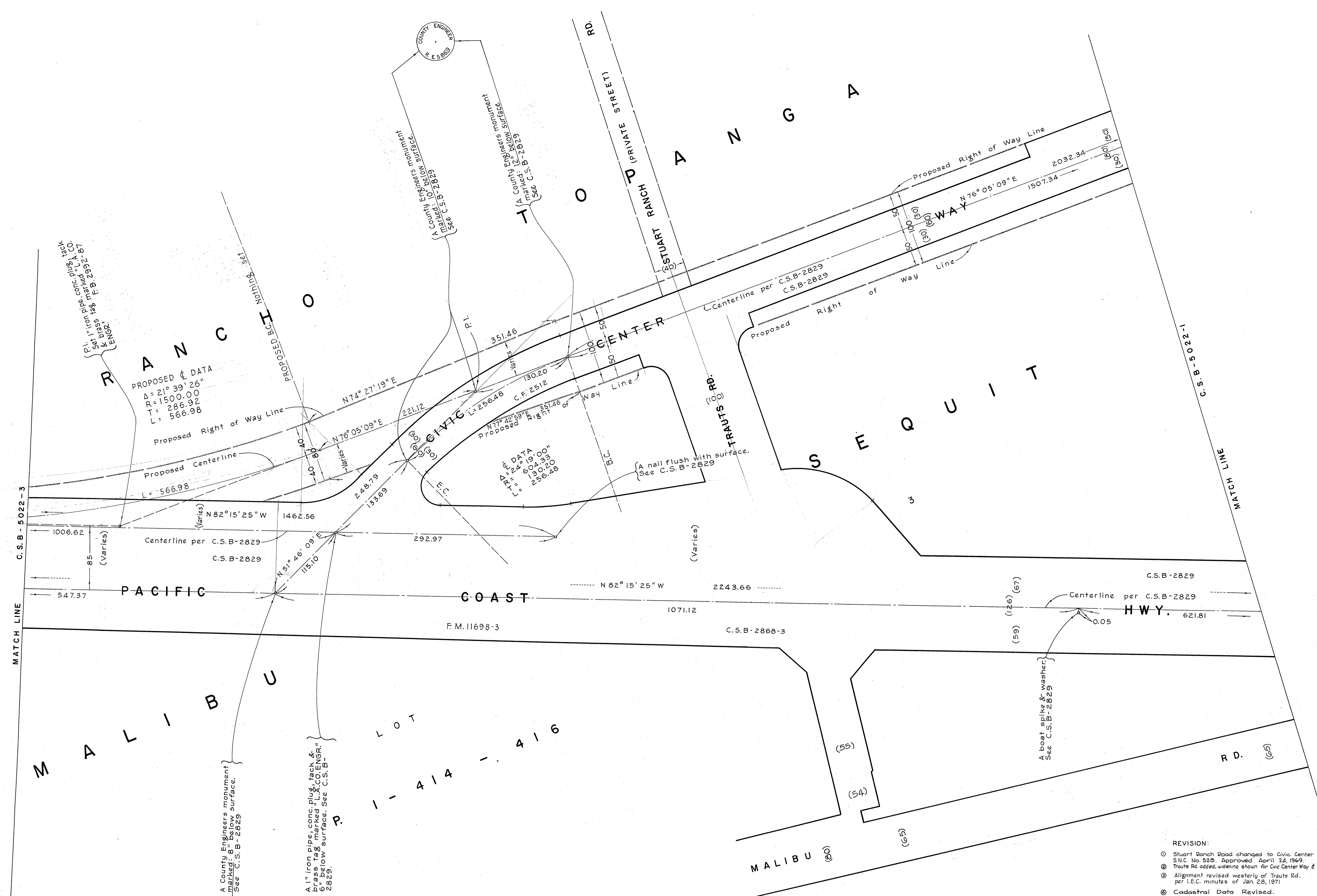
VICINITY MAP
NOT TO SCALE

DETAIL
NOT TO SCALE

REVISION:
 ① Shorter Beach Road changed to Civic Center Way per S.M.C. No. 528, Approved April 24, 1969.
 ② Proposed alignment of Cross Creek Road transferred to C.S.B-5106, reference to C.S.B-2829 to indicate establishment, Nov. 1966. E widening shown for Civic Center Way.

SCALE IN FEET
 0 50 100 150

COUNTY OF LOS ANGELES DEPARTMENT OF COUNTY ENGINEER JOHN A. LAMBIE - COUNTY ENGINEER PREPARED BY SURVEY DIVISION C.E. BRUNTY - DIVISION ENGINEER SURVEYED BY - W. J. VOGGE CHECKED BY - G. E. BARR DRAWN BY - G. H. BOYER	ALIGNMENT MAP OF		COUNTY SURVEYOR'S MAP NO. B-5022 SHEET 1 OF 4 SHEETS FILED 5-28-69 <i>Henry J. Chausse</i> DEPUTY SURVEYED OCTOBER, 1966 REFERENCE F. B. 2392-41-52 F. B. 3500-119-126 JOB NUMBER 0097.15 INDEX MAP NO. 114-077	REVISION
	CIVIC CENTER WAY			NO.
	FROM CROSS CREEK RD. TO MALIBU CANYON RD.			BY
	BASIS OF BEARINGS THE BEARING OF PACIFIC COAST HIGHWAY AS SHOWN ON C.S.B-2829			DATE



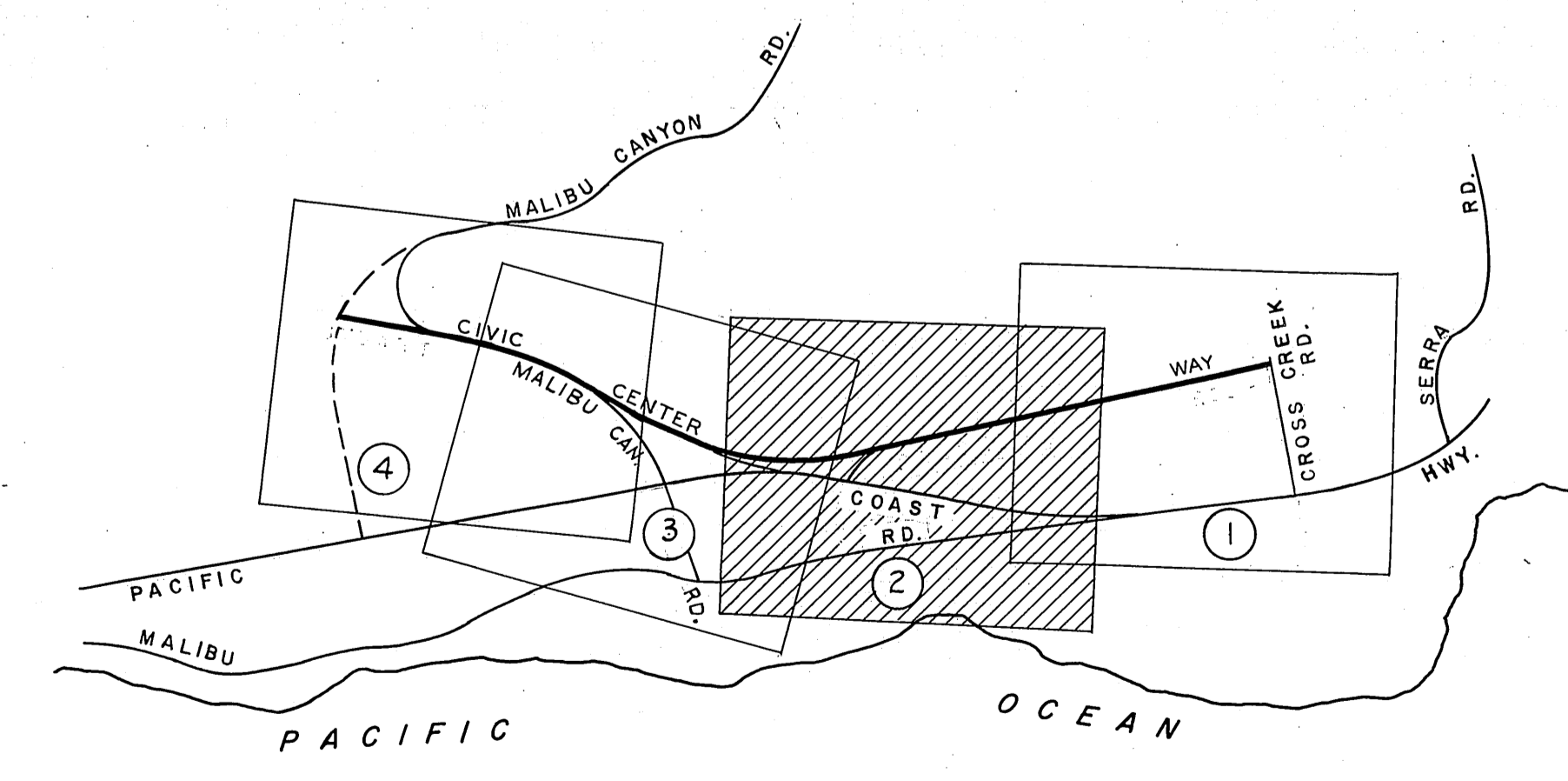
MATCH LINE C.S.B-5022-3

C.S.B-5022-1

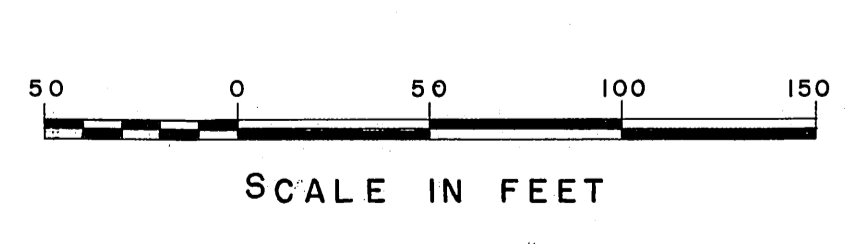
PROPOSED DATA
 A = 21° 39' 26"
 R = 1500.00
 T = 286.92
 L = 566.98

DATA
 W = 24.19 00'
 L = 604.33
 L = 130.20
 L = 256.48

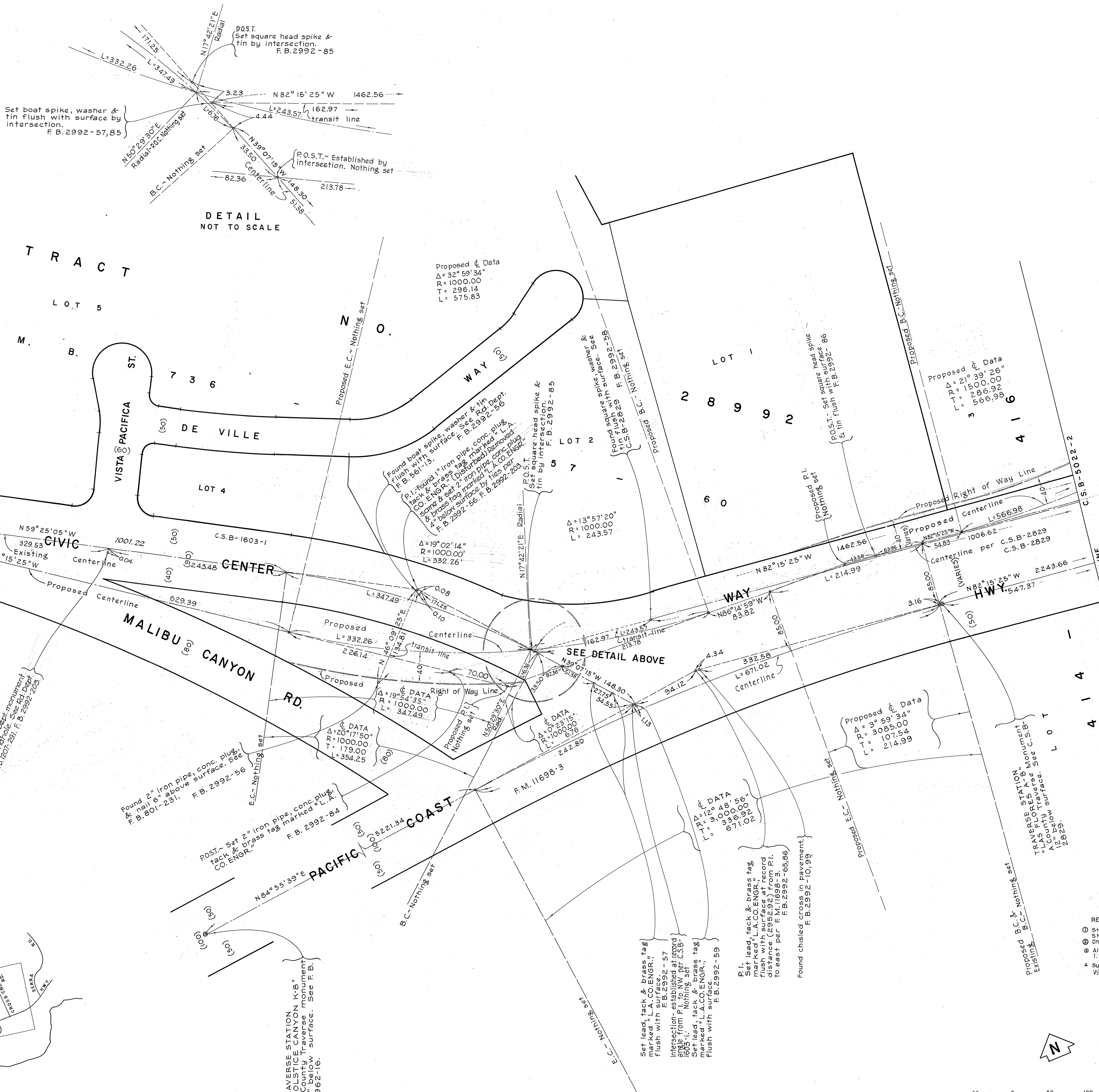
REVISION:
 ① Shurt Ranch Road changed to Civic Center Way per S.N.C. No. 528. Approved April 24, 1969.
 ② Traus Rd added, using station for Civic Center Way & Cross Creek Rd removed from title.
 ③ Alignment revised westerly of Traus Rd. per I.E.C. minutes of Jan. 28, 1971.
 ④ Cadastral Data Revised.



VICINITY MAP NOT TO SCALE



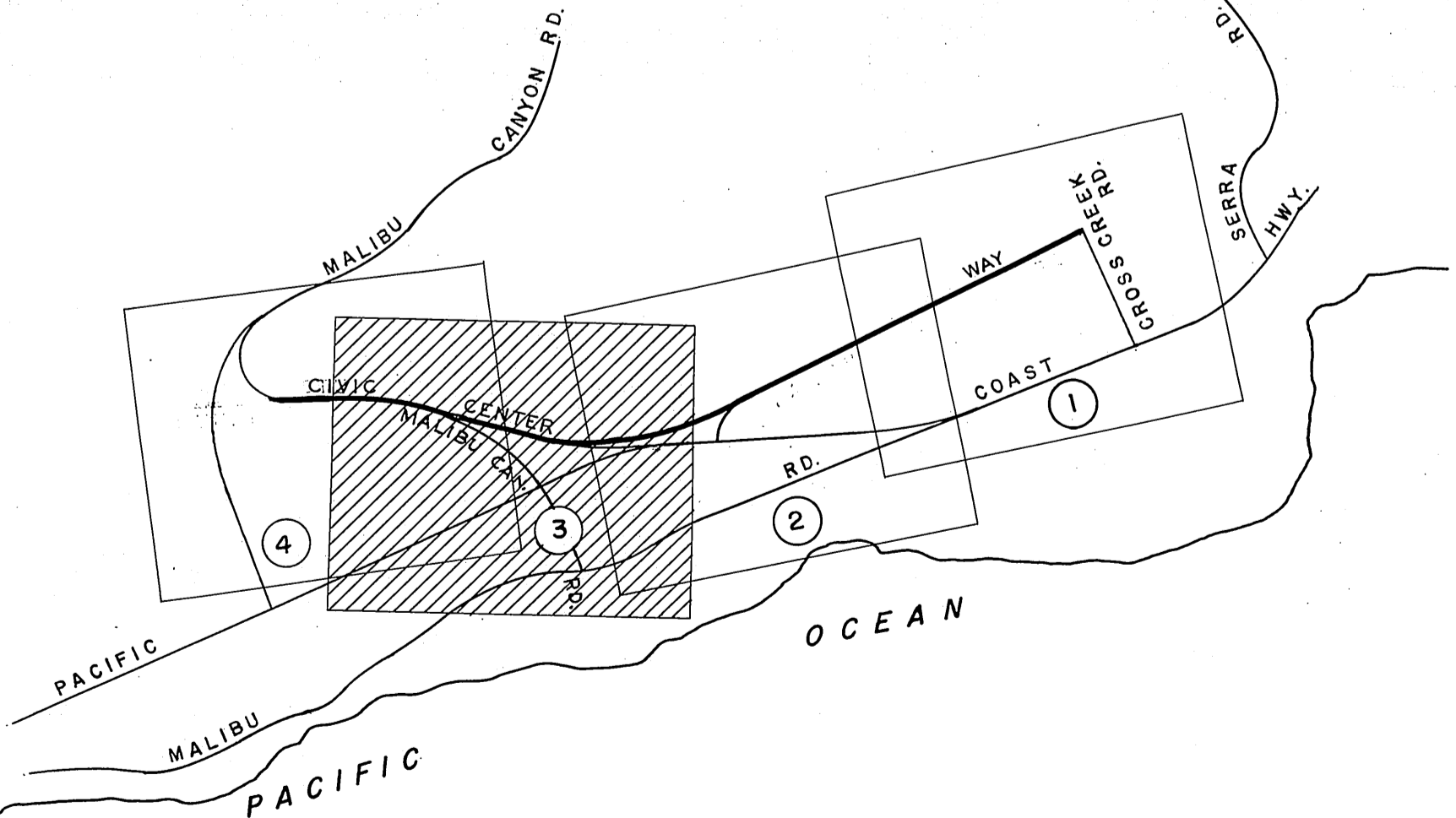
COUNTY OF LOS ANGELES DEPARTMENT OF COUNTY ENGINEER JOHN A. LAMBIE - COUNTY ENGINEER PREPARED BY SURVEY DIVISION C.E. BRUNTY - DIVISION ENGINEER SURVEYED BY W. J. VOSE CHECKED BY G. E. BARR DRAWN BY S. H. BOYER	ALIGNMENT MAP OF		COUNTY SURVEYOR'S MAP NO. B-5022 SHEET 2 OF 4 SHEETS FILED 5-2 1969 <i>George J. Stranahan</i> DEPUTY SURVEYED OCTOBER, 1966 REFERENCE F. B. 2992-41-62 F. B. 3500-119-126 JOB NUMBER 0097.15 INDEX MAP NO. 114-077	NO. BY DATE 11-24-69 8-2-70 11-1-71 10-18-77
	CIVIC CENTER WAY			
	FROM CROSS CREEK RD. TO MALIBU CANYON RD.			
	THE BEARING OF PACIFIC COAST HIGHWAY AS SHOWN ON C.S.B-2829			



DETAIL NOT TO SCALE

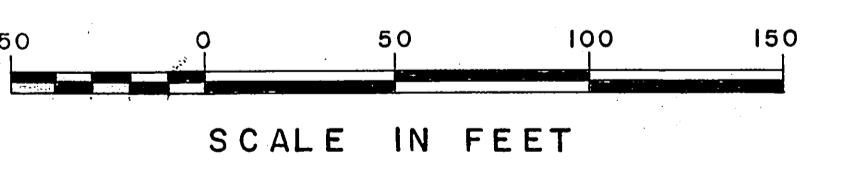
MATCH LINE C.S.B-5022-4

MATCH LINE C.S.B-5022-2

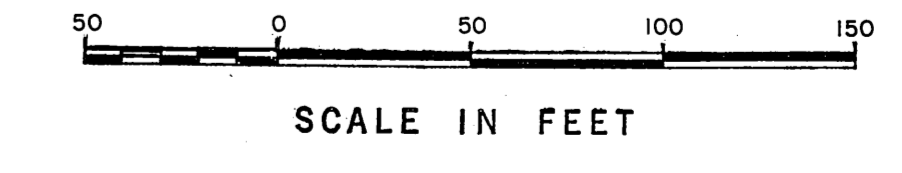
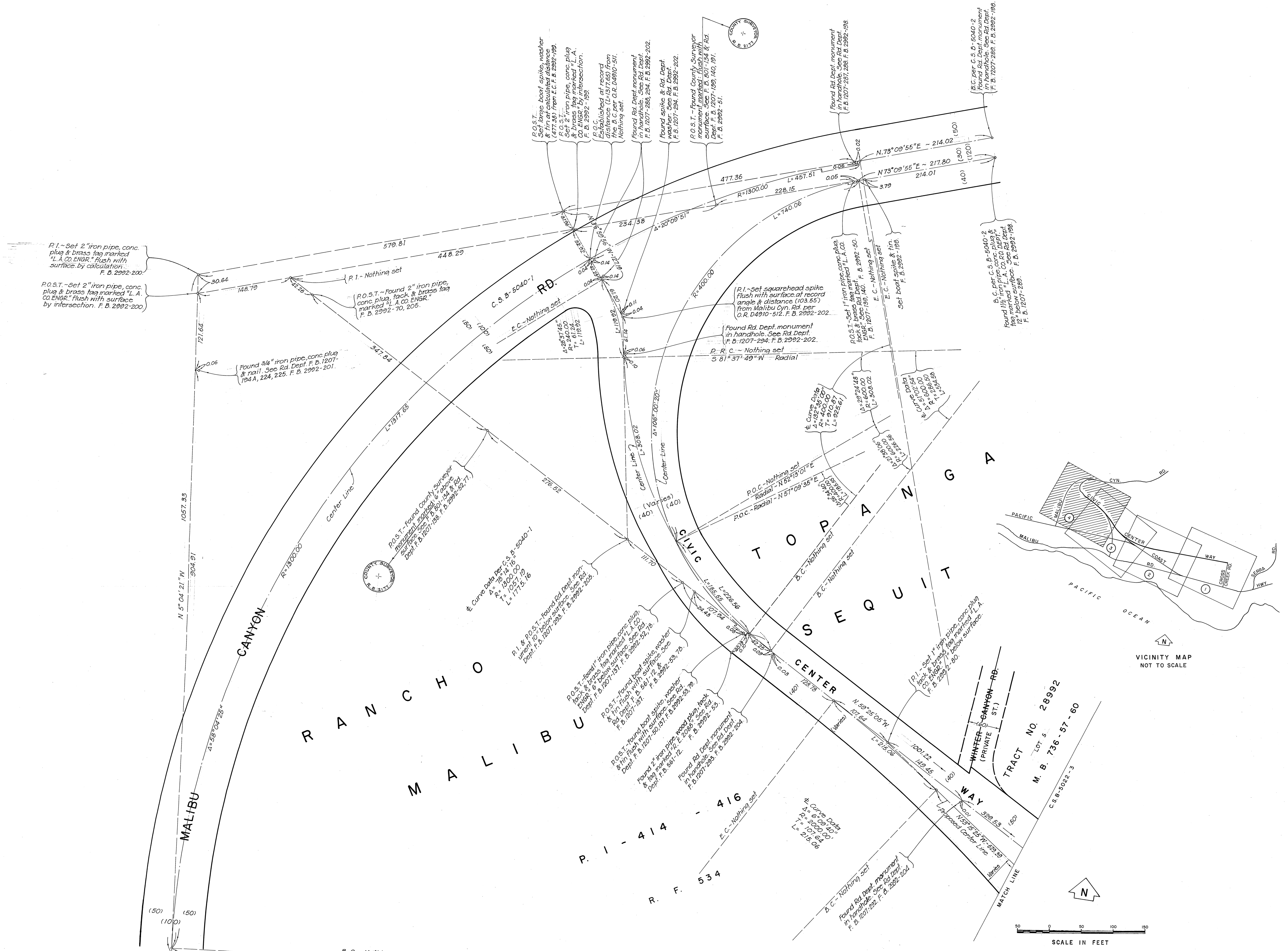


VICINITY MAP NOT TO SCALE

- REVISION:
- 1 Short Ranch Road changed to Civic Center Way per S.C. No. 528, Approved April 24, 1963.
 - 2 Cross Creek Rd. removed from title.
 - 3 Alignment revised westerly of Trauts Rd per I.E.C. minutes of Jan 26, 1971.
 - 4 Survey data in Civic Center Way in the vicinity of Vista Pacific St. revised.



COUNTY OF LOS ANGELES DEPARTMENT OF COUNTY ENGINEER JOHN A. LAMBIE - COUNTY ENGINEER PREPARED BY SURVEY DIVISION C.E. BRINT - DIVISION ENGINEER SURVEYED BY W. J. VOGEL CHECKED BY G. E. BARR DRAWN BY G. H. BOYER	ALIGNMENT MAP OF		COUNTY SURVEYOR'S MAP NO. B-5022 SHEET 3 OF 4 SHEETS FILED OCT 2 1963 <i>Samuel E. ...</i> DEPUTY SURVEYED OCTOBER, 1966 REFERENCE F. B. 2992-41-62 F. B. 3500-119-126 JOB NUMBER 0097.15 INDEX MAP NO. 114-077	REVISION NO. BY DATE 1 BY 10-15-62 2 BY 11-1-62 3 BY 10-15-62
	CIVIC CENTER WAY			
	FROM CROSS CREEK RD. TO MALIBU CANYON RD.			
	THE BEARING OF PACIFIC COAST HIGHWAY AS SHOWN ON C.S.B-2829			



VICINITY MAP NOT TO SCALE

COUNTY OF LOS ANGELES DEPARTMENT OF COUNTY ENGINEER HARVEY T. BRANDT—COUNTY ENGINEER PREPARED BY SURVEY DIVISION GEORGE J. FRANCESCO—DIVISION ENGINEER SURVEYED BY W. J. VOGE CHECKED BY G. E. BARR DRAWN BY G. H. BOYER M. HAWASU	ALIGNMENT MAP OF CIVIC CENTER WAY FROM CROSS CREEK ROAD TO MALIBU CANYON ROAD BASIS OF BEARINGS THE BEARING OF PACIFIC COAST HIGHWAY AS SHOWN ON C.S.B-2829	COUNTY SURVEYOR'S MAP NO. B-5022 SHEET 4 OF 4 SHEETS FILED: <i>February 19 1966</i> <i>R. J. MITCHELL</i> SURVEYED OCT. 1966 & DEC. 1973 REFERENCE F. B. 2992-41-62; 191-205 F. B. 3500-119-126 JOB NUMBER 0097.15 INDEX MAP NO. 114-CB7	REVISION NO. BY DATE
		COUNTY SURVEYOR'S MAP NO. B-5022 SHEET 4 OF 4 SHEETS FILED: <i>February 19 1966</i> <i>R. J. MITCHELL</i> SURVEYED OCT. 1966 & DEC. 1973 REFERENCE F. B. 2992-41-62; 191-205 F. B. 3500-119-126 JOB NUMBER 0097.15 INDEX MAP NO. 114-CB7	REVISION NO. BY DATE