

Found 2" iron pipe, plug and nail, 24" below surface. See Tract No. 13290, M.B. 273-1, 2. Replaced plug and nail with conc. plug, nail and brass tag marked "L.A. CO. ENGR." F.B. 3417-186

Found County Surveyor's Monument marked 24" below surface. See C.S. 8554, F.B. 3417-27 and Tract No. 29171, M.B. 732-28-30. F.B. 3417-207

Found County Surveyor's Monument marked 24" below surface. See C.S. 8554 and F.B. 3417-207. F.B. 3417-203

Set back spike, tin and washer and tin flush with surface. F.B. 3417-185

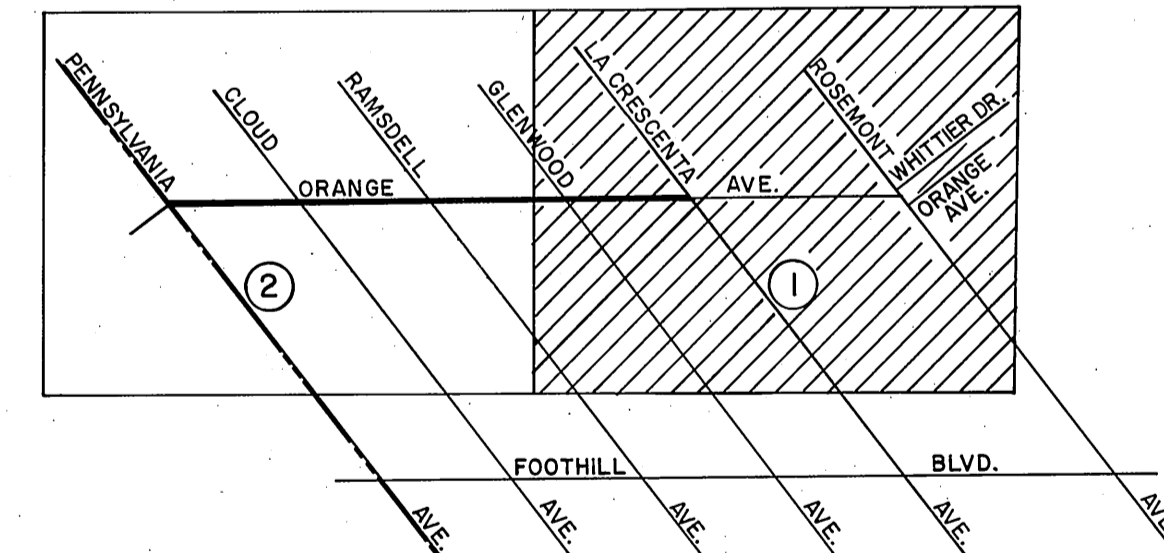
Found square head spike washer and tin flush with surface. F.B. 3417-202

Found square head spike washer and tin flush with surface. F.B. 3417-213

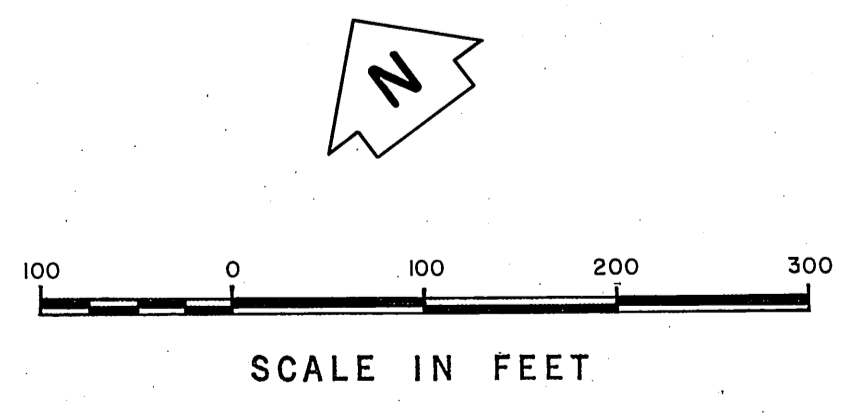
Found wire spike and washer with surface. See F.B. 2059-81. F.B. 3417-214

Found 3/4" iron pipe conc. plug and brass tag marked L.A. CO. ENGR. 10" set back spike washer and tin flush with surface. See F.B. 1896-29. Set back spike washer and tin flush with surface. See F.B. 3417-216

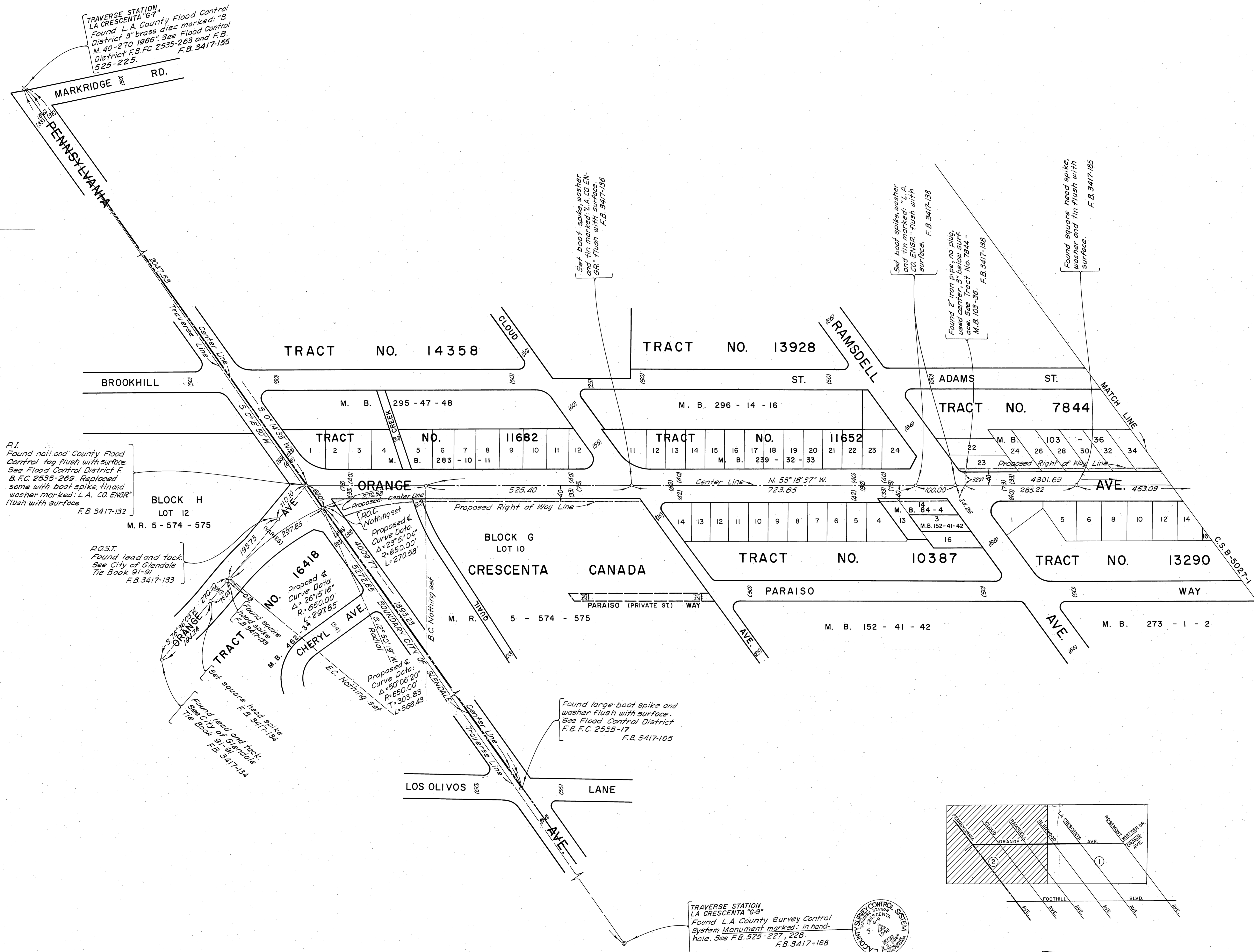
ANGLE PT. ON LA CRESCENTA AVE. PER C.S. 8486. Found nail flush with surface. See F.B. 3292-34, 117. F.B. 3417-217



VICINITY MAP NOT TO SCALE



COUNTY OF LOS ANGELES DEPARTMENT OF COUNTY ENGINEER JOHN A. LAMBIE - COUNTY ENGINEER PREPARED BY SURVEY DIVISION C. E. BRUNTY - DIVISION ENGINEER SURVEYED BY H. H. SPRIGGS CHECKED BY W. A. EDMONDSON DRAWN BY M. HAMASU S. KURACHI	ALIGNMENT MAP OF <b>ORANGE AVENUE</b> FROM <b>LA CRESCENTA AVENUE</b> TO <b>PENNSYLVANIA AVENUE</b> BASIS OF BEARINGS CALIFORNIA COORDINATE SYSTEM, ZONE 7		COUNTY SURVEYOR'S MAP NO. <b>B-5027</b> SHEET 1 OF 2 SHEETS FILED 10-23-1962 <i>Henry J. Macdonald</i> DEPUTY SURVEYED AUG. 8 SEPT. 1967 REFERENCE F. B. 3417-181-217	REVISION NO. BY DATE
			JOB NUMBER 0097.28	INDEX MAP NO. 51



TRAVERSE STATION  
LA CRESCENTA "69"  
Found L.A. County Flood Control  
District "3" brass disc marked "B"  
M. 40-270 1968. See Flood Control  
District F.B. 2535-263 and F.B.  
525-225. F.B. 3417-155

R.I.  
Found nail and County Flood  
Control tag flush with surface.  
See Flood Control District F.  
B. F.C. 2535-269. Replaced  
same with boot spike, tin and  
washer marked "L.A. CO. ENGR"  
flush with surface.  
F.B. 3417-132

POST  
Found lead and tack.  
See City of Glendale  
Tie Book 91-91  
F.B. 3417-133

Found square head spike  
See City of Glendale  
Tie Book F.B. 3417-134

Set boot spike, washer  
and tin marked "L.A.  
CO. ENGR" flush with  
surface. F.B. 3417-156

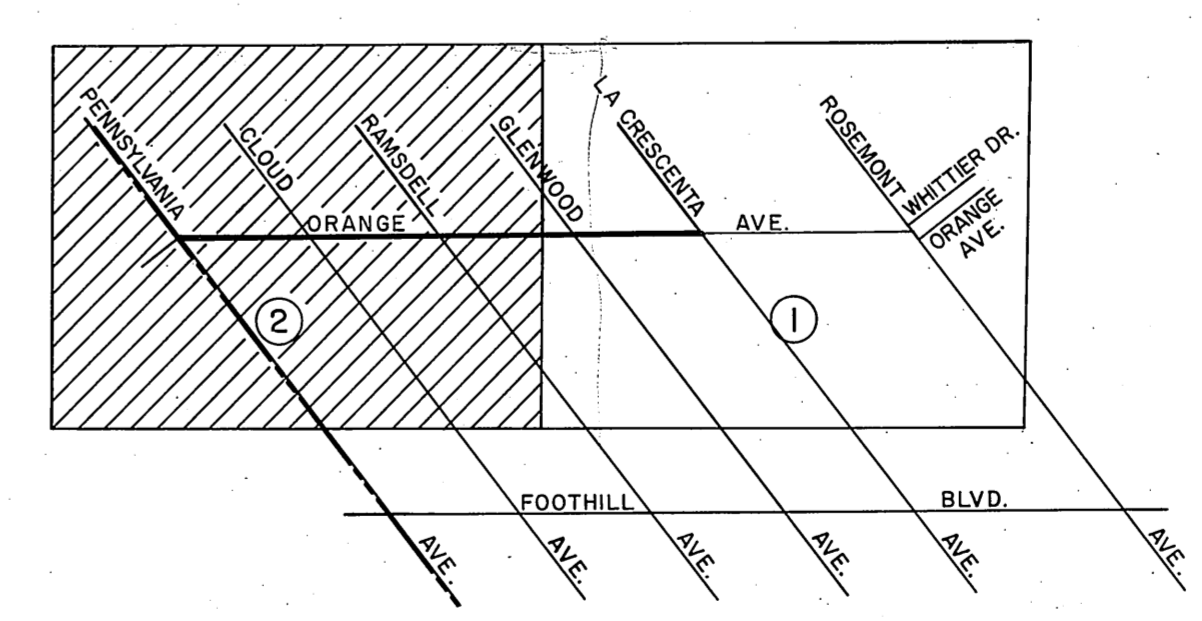
Set boot spike, washer  
and tin marked "L.A.  
CO. ENGR" flush with  
surface. F.B. 3417-158

Found 2" iron pipe, no plug,  
used center, 3" below surt.  
See Tract No. 7844 -  
M.B. 103-36. F.B. 3417-155

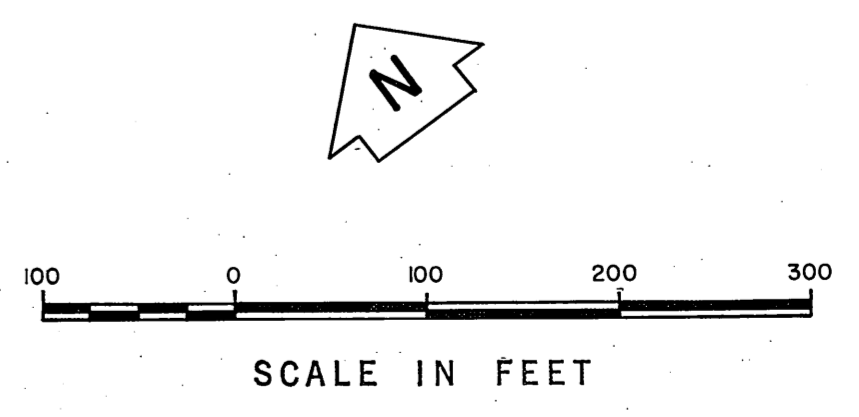
Found square head spike  
and tin flush with  
surface. F.B. 3417-185

Found large boot spike and  
washer flush with surface.  
See Flood Control District  
F.B. F.C. 2535-17  
F.B. 3417-105

TRAVERSE STATION  
LA CRESCENTA "69"  
Found L.A. County Survey Control  
System Monument marked in hard-  
hole. See F.B. 525-227, 228.  
F.B. 3417-168



VICINITY MAP  
NOT TO SCALE



COUNTY OF LOS ANGELES DEPARTMENT OF COUNTY ENGINEER JOHN A. LAMBIE, COUNTY ENGINEER PREPARED BY SURVEY DIVISION C. E. BRUNTY, DIVISION ENGINEER SURVEYED BY H. H. SPRIGGS CHECKED BY W. A. EDMONDSON DRAWN BY M. HAMASU S. KURACHI	ALIGNMENT MAP OF <b>ORANGE AVENUE</b> FROM <b>LA CRESCENTA AVENUE</b> TO <b>PENNSYLVANIA AVENUE</b> BASIS OF BEARINGS CALIFORNIA COORDINATE SYSTEM, ZONE 7		COUNTY SURVEYOR'S MAP NO. <b>B-5027</b> SHEET 2 OF 2 SHEETS FILED: 10-23 1968 <i>John A. Lambie</i> COUNTY ENGINEER SURVEYED AUG. 8 SEPT. 1967 REFERENCE F. B. 3417-181-217	REVISION NO. BY DATE
	JOB NUMBER 0097.28		INDEX MAP NO. 51	