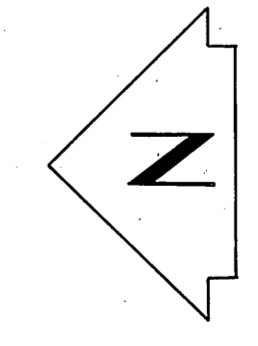
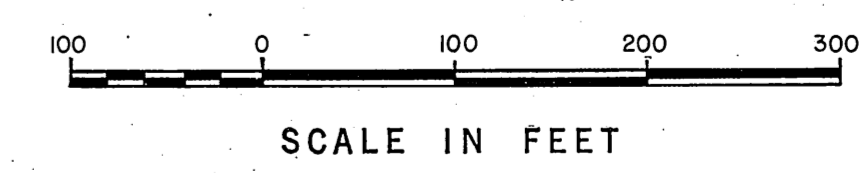
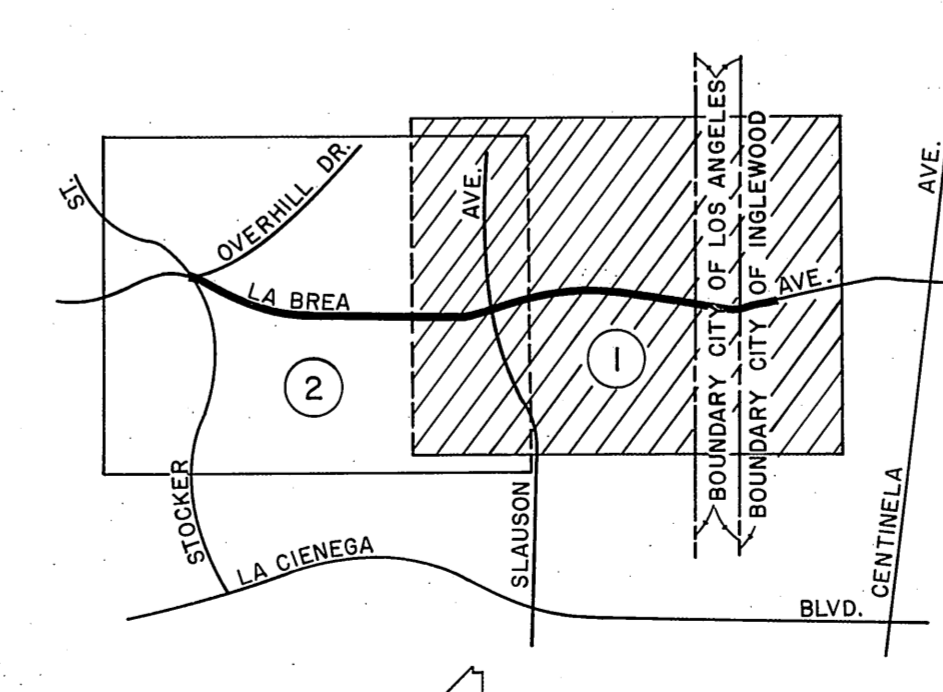
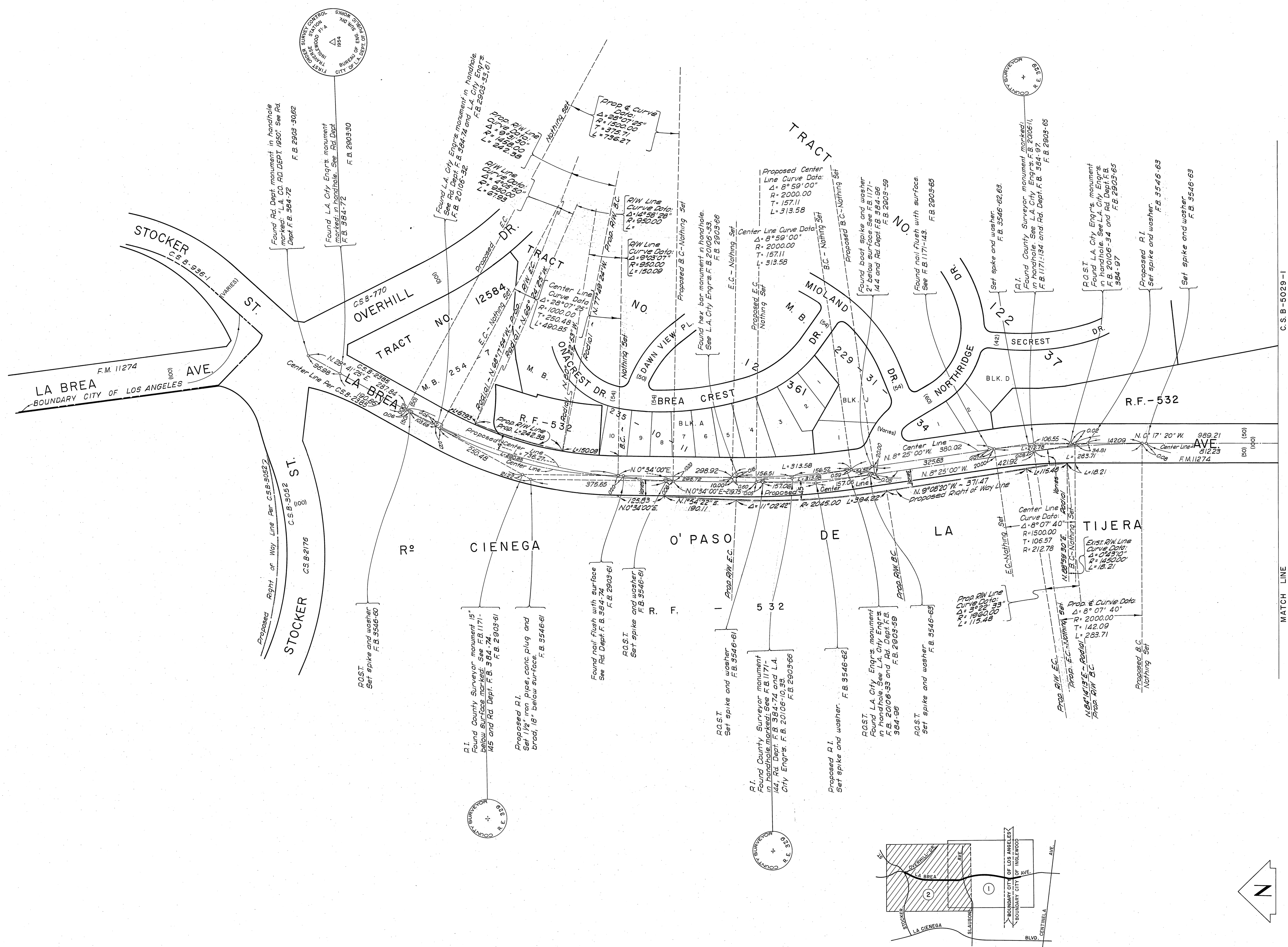


NOTE: THE ALIGNMENT OF THE MAJOR HIGHWAY AS PROPOSED ON THIS MASTER PLAN OF HIGHWAYS NOT ESTABLISHED MARCH, 1969.



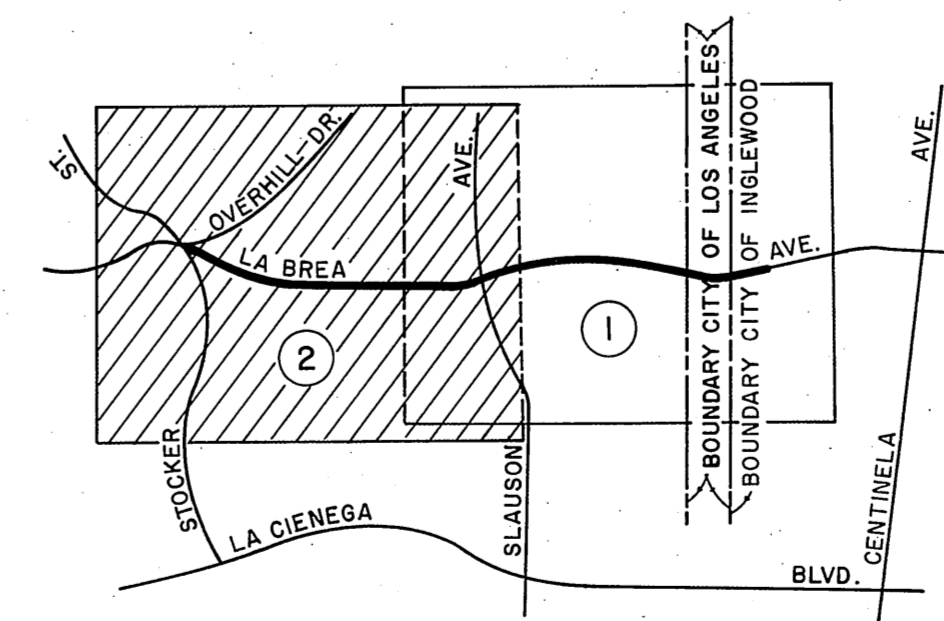
COUNTY OF LOS ANGELES DEPARTMENT OF COUNTY ENGINEER JOHN A. LAMBIE - COUNTY ENGINEER PREPARED BY SURVEY DIVISION C. E. BRUNTY - DIVISION ENGINEER SURVEYED BY E. ENGLISH CHECKED BY H. HOLMAN DRAWN BY S. KURACHI	ALIGNMENT MAP OF <b>LA BREA AVENUE</b> FROM <b>SIXTY THIRD STREET</b> TO <b>STOCKER STREET</b>		COUNTY SURVEYOR'S MAP NO. <b>B-5029</b> SHEET 1 OF 2 SHEETS FILED <i>2-23</i> 19 <i>69</i> <i>George J. Amadori</i> DEPUTY SURVEYOR NOV., 1967 REFERENCE F.B. 2903-41-66	REVISION NO. BY DATE
	BASIS OF BEARINGS THE BEARING OF LA BREA AVENUE (N. 28° 41' 25" E.) AS SHOWN ON C.S. B-2385		JOB NUMBER 0097.62.	INDEX MAP NO. 24



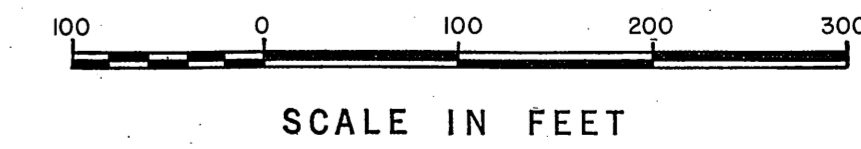
C.S.B-5029-1 MATCH LINE

REVISION

- ① Data corrected on existing center line of LaBrea Ave. immediately south of 1500' radius curve ( $\Delta=8^{\circ}07'40''$ ).
- ② Proposed right of way line revised to show variable widths per Rd Dept. Map No. JN 22194-1.



VICINITY MAP NOT TO SCALE



COUNTY OF LOS ANGELES DEPARTMENT OF COUNTY ENGINEER JOHN A. LAMBIE - COUNTY ENGINEER PREPARED BY SURVEY DIVISION C. E. BRINITY - DIVISION ENGINEER SURVEYED BY ... E. ENGLISH CHECKED BY ... H. HOLTMAN DRAWN BY ... S. KURACHI	ALIGNMENT MAP OF <b>LA BREA AVENUE</b> FROM <b>SIXTY THIRD STREET</b> TO <b>STOCKER STREET</b>		COUNTY SURVEYOR'S MAP NO. <b>B-5029</b> SHEET 2 OF 2 SHEETS FILED: 11-23-67 DEPUTY NOV., 1967 REFERENCE F.B. 2903-41-66	REVISION NO. BY DATE ① S.K. 9-18-69 4-42-77
	BASIS OF BEARINGS THE BEARING OF LA BREA AVENUE (N. 26° 41' 25" E.) AS SHOWN ON C.S.B - 2365			JOB NUMBER 0097.62
	INDEX MAP NO. 24			