

INGLEWOOD F-94  
Found "B" type monument  
under cover. See L.A. City  
Engr's. F. B. 10663-38  
F.B. 1690-166

Found lead and tack 3"  
below surface. See Rd.  
Dept. F. B. 150-104  
F.B. 1690-121

Found intersection of  
4 hooks in manhole.  
See F.B. 1014-19  
F.B. 1690-121

Found intersection of  
4 hooks in manhole.  
See F.B. 1014-17  
F.B. 1690-161

Found lead and tack  
3" below surface. See  
Rd. Dept. F.B. 150-104  
F.B. 1690-161

Found intersection of  
4 hooks in manhole. See  
F.B. 1014-17.  
F.B. 1690-144

Found lead and tack 3"  
below surface. See F.B.  
1014-17, Rd. Dept. F.B.  
150-104.  
F.B. 1690-144

Established by intersection.  
Nothing set.  
F.B. 1690-120

Found lead and tack 6" below  
surface. See F. B. 1952-42 and  
Rd. Dept. F. B. 150-29. Set boat  
spike, washer and Tin Flush  
with surface.  
F.B. 1690-130

Found cut spike 6" below  
surface. See F. B. 1952-42  
and Rd. Dept. F. B. 150-29  
Set boat spike, washer and  
Tin Flush with surface.  
F.B. 1690-130

Set boat spike, washer and  
Tin Flush with surface.  
F.B. 1690-128

Set boat spike, washer and  
Tin Flush with surface.  
F.B. 1690-125

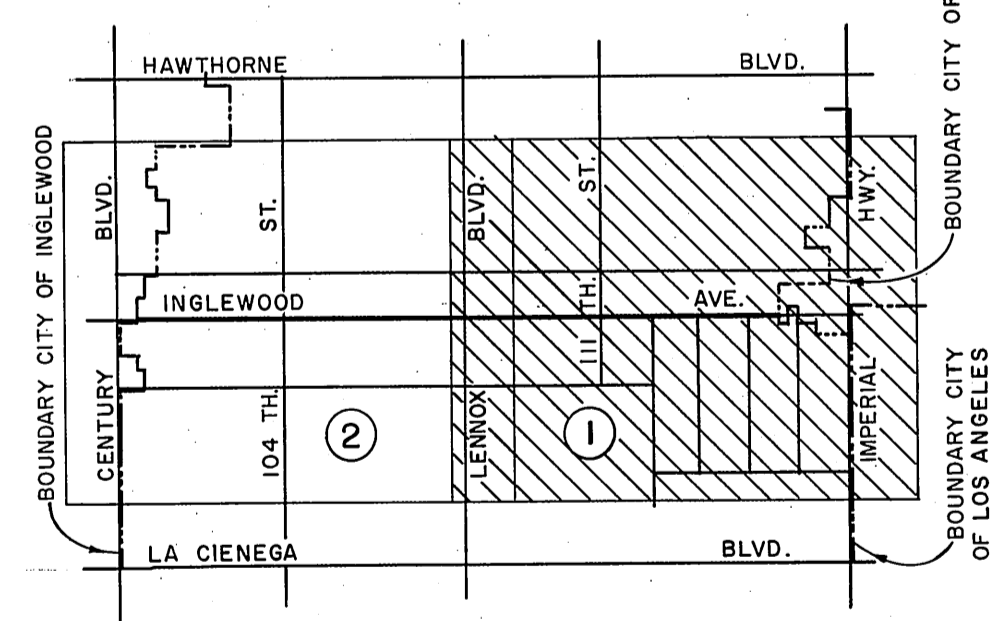
Set boat spike, washer and  
Tin Flush with surface.  
F.B. 1690-124

INGLEWOOD F-94  
TRANSVERSE STATION  
Found L. A. City Engr's  
monument in well with  
cover. See L.A. City  
Engr's. F. B. 1690-120

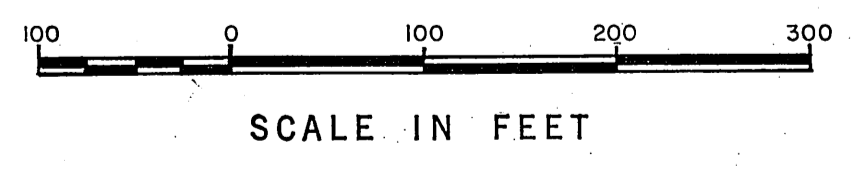
Established by ties  
See Rd. Dept. F. B.  
260-2A  
F.B. 1690-122

Found intersection of  
4 tangent ties. See Rd.  
Dept. F. B. 260-3A, F. B.  
1952-18 and F.B. 1133-16  
F.B. 1690-143

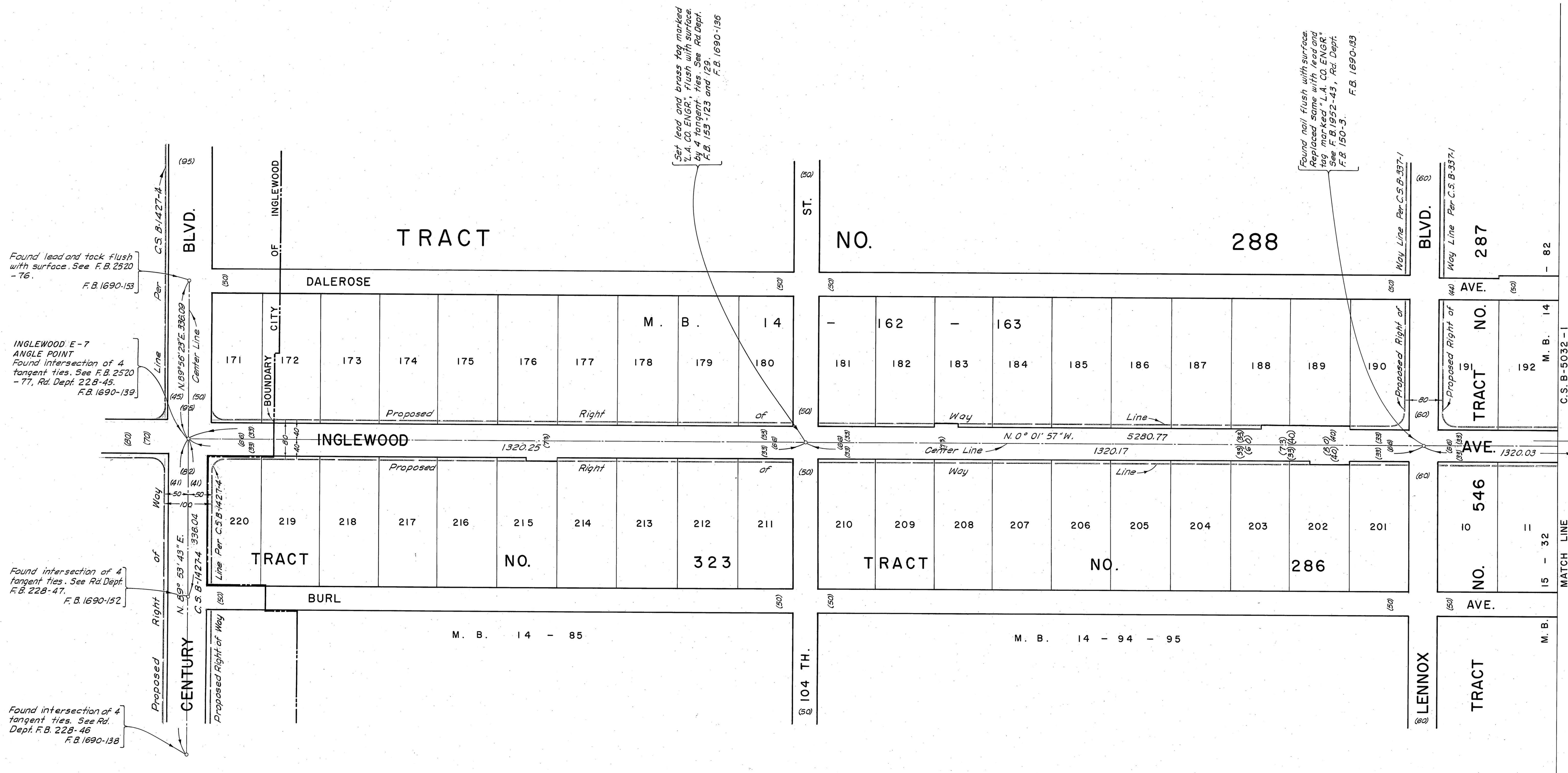
REVISIONS:  
0 Cadastral Data Revised.



VICINITY MAP  
NOT TO SCALE



COUNTY OF LOS ANGELES DEPARTMENT OF COUNTY ENGINEER JOHN A. LAMBLE, COUNTY ENGINEER PREPARED BY SURVEY DIVISION C. E. BRUNTY, DIVISION ENGINEER SURVEYED BY E. F. ENGLISH CHECKED BY A. E. DART DRAWN BY S. KURACHI	ALIGNMENT MAP OF <b>INGLEWOOD AVENUE</b> FROM <b>IMPERIAL HIGHWAY</b> TO <b>CENTURY BOULEVARD</b> BASIS OF BEARINGS CALIFORNIA COORDINATE SYSTEM, ZONE 7		COUNTY SURVEYOR'S MAP NO. <b>B-5032</b> SHEET 1 OF 2 SHEETS FILED <u>11-8</u> 19 <u>68</u> <i>Sergio J. Camacho</i> DEPUTY SURVEYED AUG. 1968 REFERENCE F. B. 1690-117 - 166	REVISION NO. BY DATE 0 A.M. 11/77
			JOB NUMBER 0075-49	INDEX MAP NO. 24



Found lead and tack flush with surface. See F.B. 2520-76.  
F.B. 1690-153

INGLEWOOD E-7  
ANGLE POINT  
Found intersection of 4  
Tangent Ties. See F.B. 2520-77, Rd. Dept. 22B-45.  
F.B. 1690-139

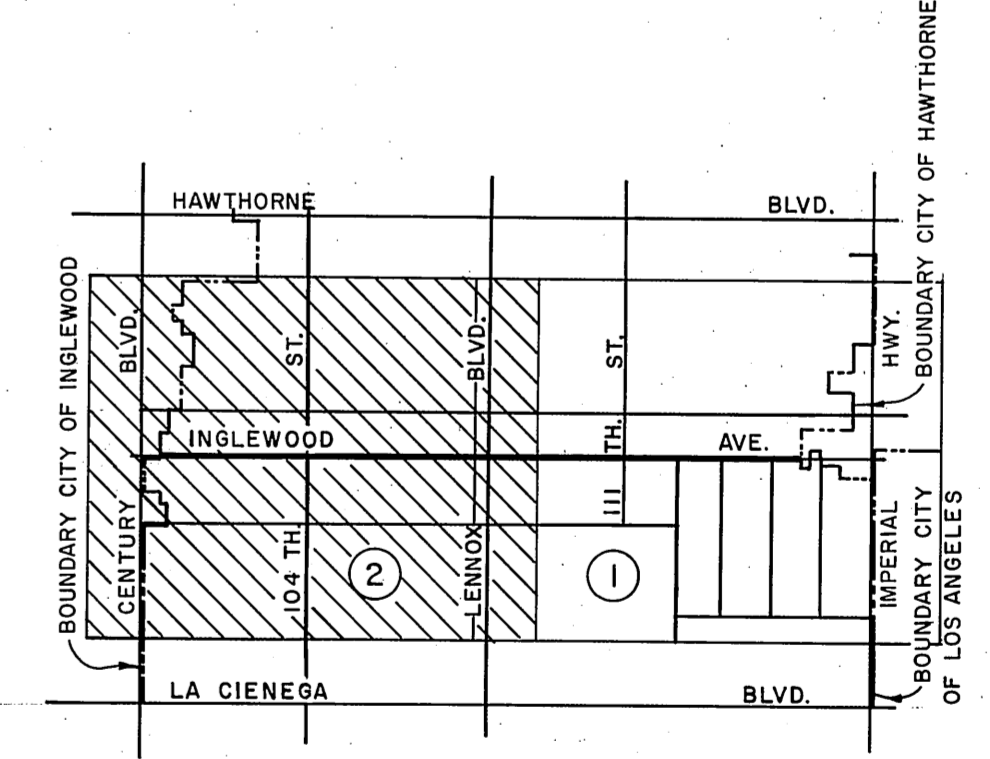
Found intersection of 4  
Tangent Ties. See Rd. Dept.  
F.B. 22B-47.  
F.B. 1690-152

Found intersection of 4  
tangent ties. See Rd.  
Dept. F.B. 22B-46  
F.B. 1690-138

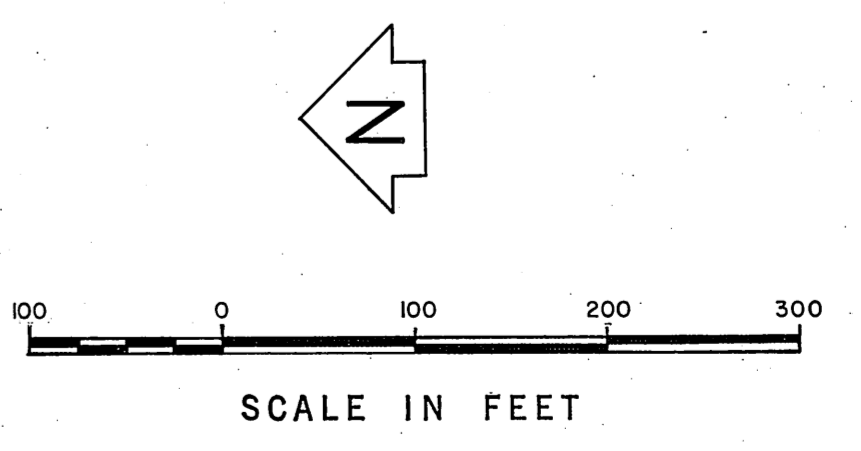
Set lead and brass for marked  
L.A. CO. ENGR., flush with surface  
by 4 tangent ties. See Rd. Dept.  
F.B. 153-123 and 129.  
F.B. 1690-136

Found lead flush with surface.  
See F.B. 150-3.  
F.B. 1690-03

REVISIONS:  
① Cadastral Data Revised.



VICINITY MAP  
NOT TO SCALE



COUNTY OF LOS ANGELES DEPARTMENT OF COUNTY ENGINEER JOHN A. LAMBIE, COUNTY ENGINEER PREPARED BY SURVEY DIVISION C. E. BRUNTY, DIVISION ENGINEER SURVEYED BY E. F. ENGLISH CHECKED BY A. E. DART DRAWN BY S. KURACHI	ALIGNMENT MAP OF <b>INGLEWOOD AVENUE</b> FROM IMPERIAL HIGHWAY TO CENTURY BOULEVARD BASIS OF BEARINGS CALIFORNIA COORDINATE SYSTEM, ZONE 7		COUNTY SURVEYOR'S MAP NO. <b>B-5032</b> SHEET 2 OF 2 SHEETS FILED <i>11-6</i> , 1968 <i>George J. Brumby</i> COUNTY ENGINEER SURVEYED AUG. 1968 REFERENCE F. B. 1690-117 - 166.	REVISION NO. BY DATE ① A.M. 10/1/77
	JOB NUMBER 0075.49		INDEX MAP NO. 24	