

SEC. 9

T.3N.

R.16W.

SEC. 10

T.3N.

R.16W.

R. S. 42 - 14
O. R. 15025 - 167

REVISION:
 ① C.S.B-5279-4 reference added.

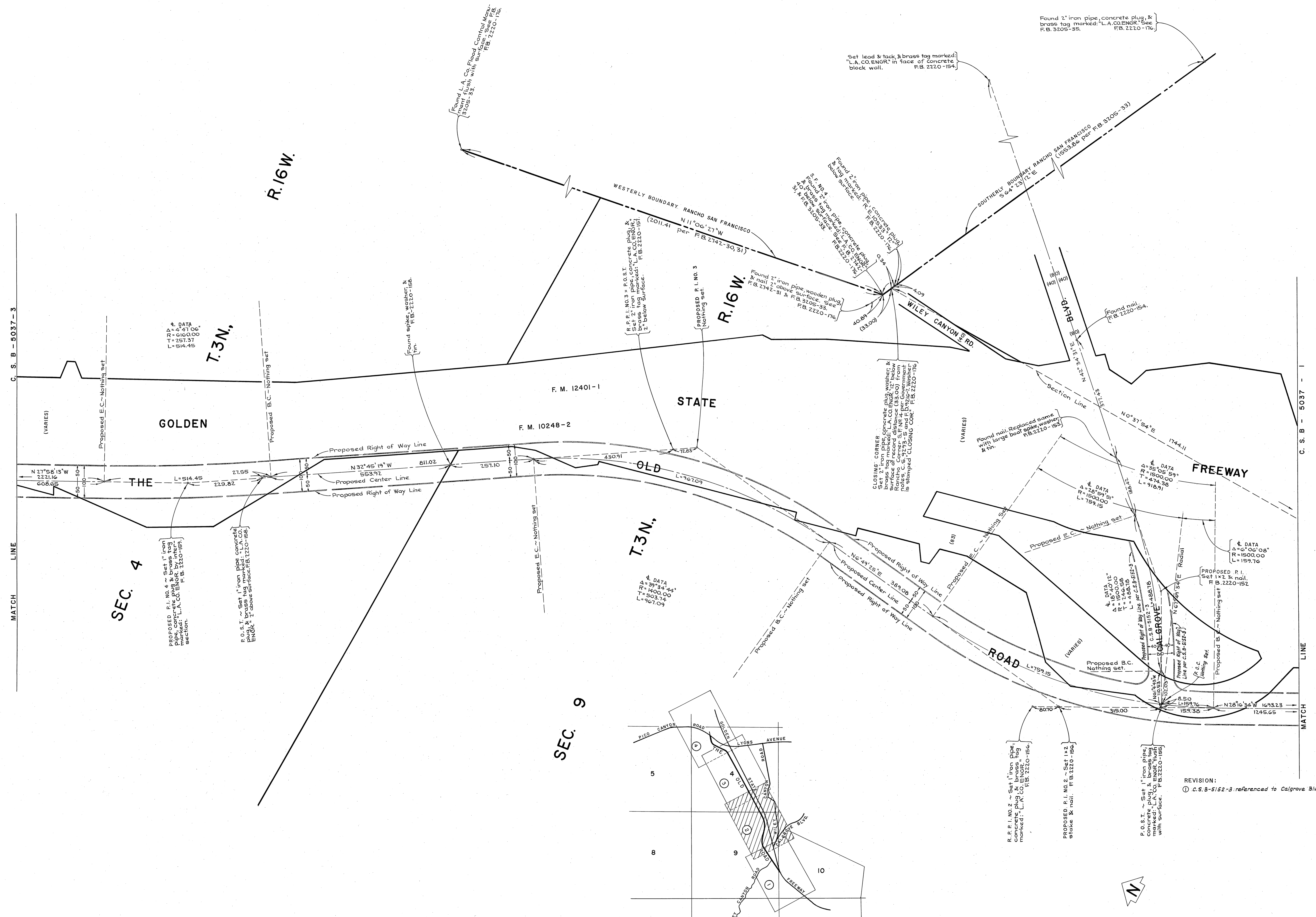
SCALE IN FEET
 0 100 200 300

COUNTY OF LOS ANGELES
 DEPARTMENT OF
 COUNTY ENGINEER
 JOHN A. LAMBIE - COUNTY ENGINEER
 PREPARED BY
 SURVEY DIVISION
 C. E. BRUNTY - DIVISION ENGINEER
 SURVEYED BY J. FULTON
 CHECKED BY G. D. BAILEY
 DRAWN BY R. R. SHEAN

ALIGNMENT MAP OF
 THE OLD ROAD
 FROM
 1800 FEET SOUTHERLY
 OF CALGROVE BOULEVARD
 TO
 PICO CANYON ROAD
 BASIS OF BEARINGS
 CALIFORNIA COORDINATE SYSTEM, ZONE 7

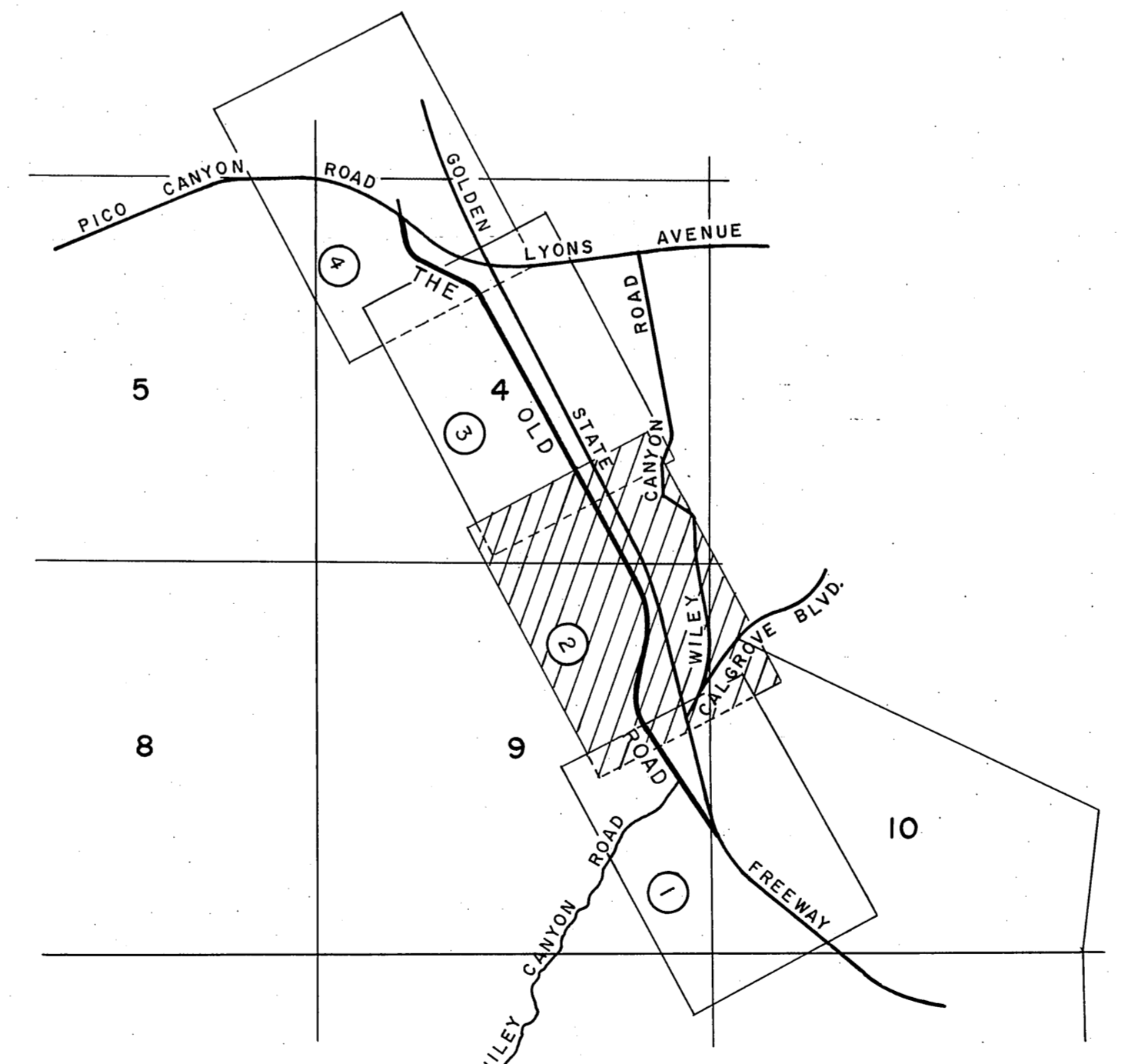
COUNTY SURVEYOR'S MAP NO.
B-5037
 SHEET 1 OF 4 SHEETS
 FILED *John J. [Signature]* 1962
 SURVEYED
 OCT. & NOV. 1967 & MAR. 1968
 REFERENCE
 F. B. 2220-145-179
 JOB NUMBER 009662 INDEX MAP NO. 233-07 233-117

NO.	BY	DATE
1	S.K.	4-6-77

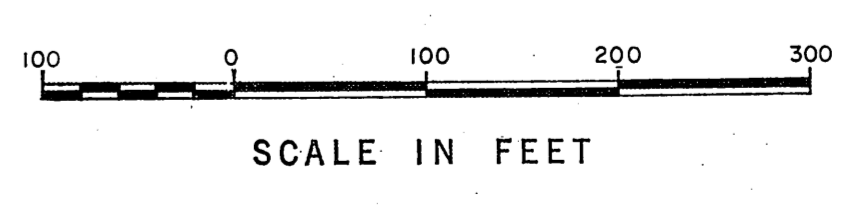


SEC. 9

SEC. 4

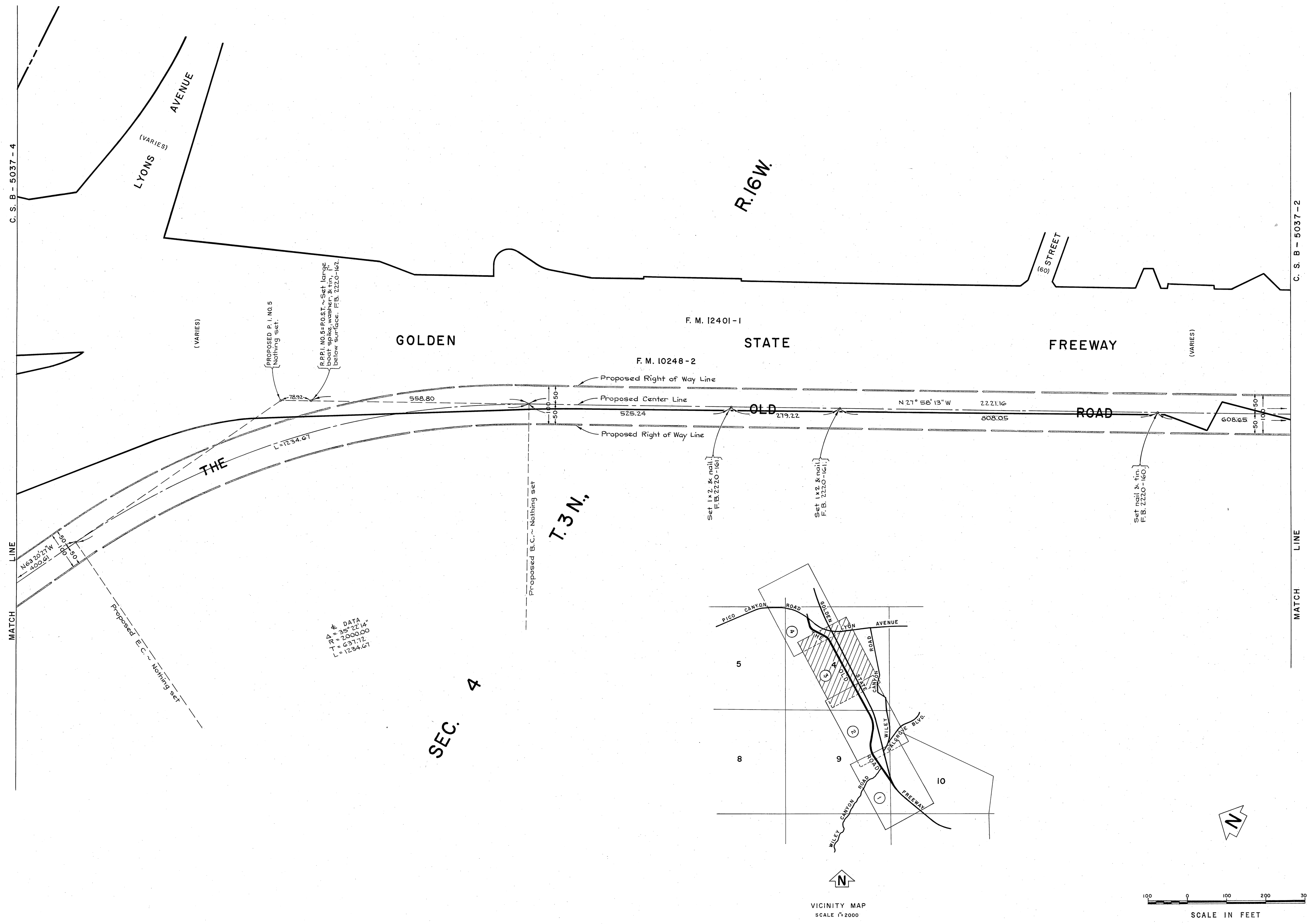


VICINITY MAP
SCALE 1" = 2000'

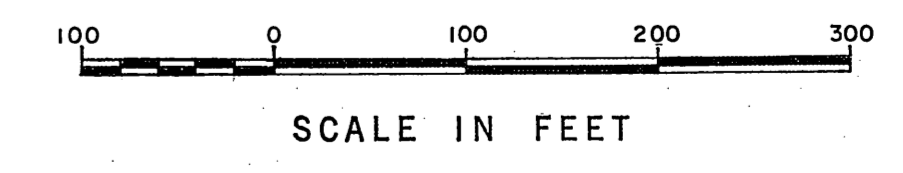
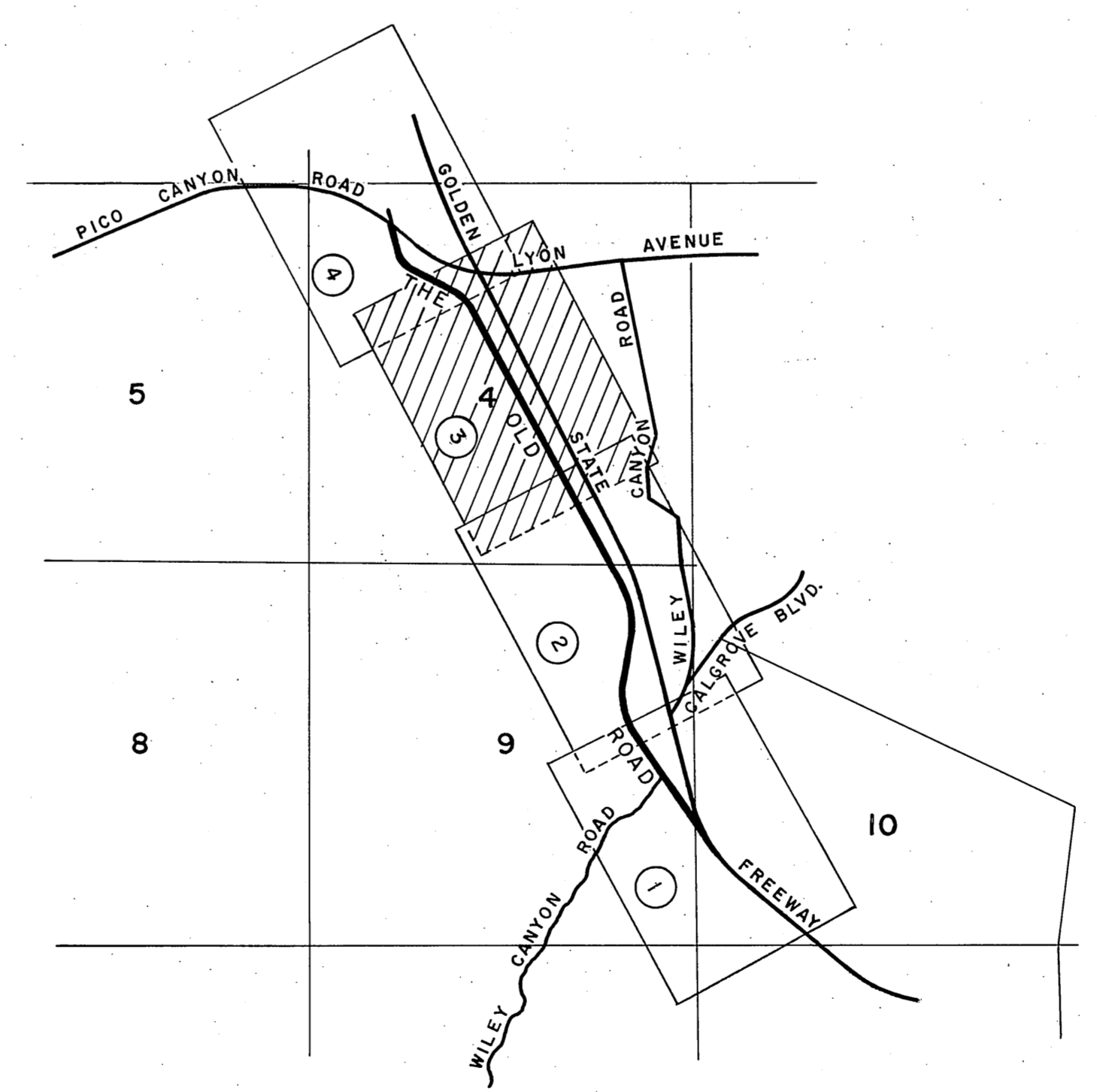


REVISION:
① C.S.B-5152-3 referenced to Calgrove Blvd.

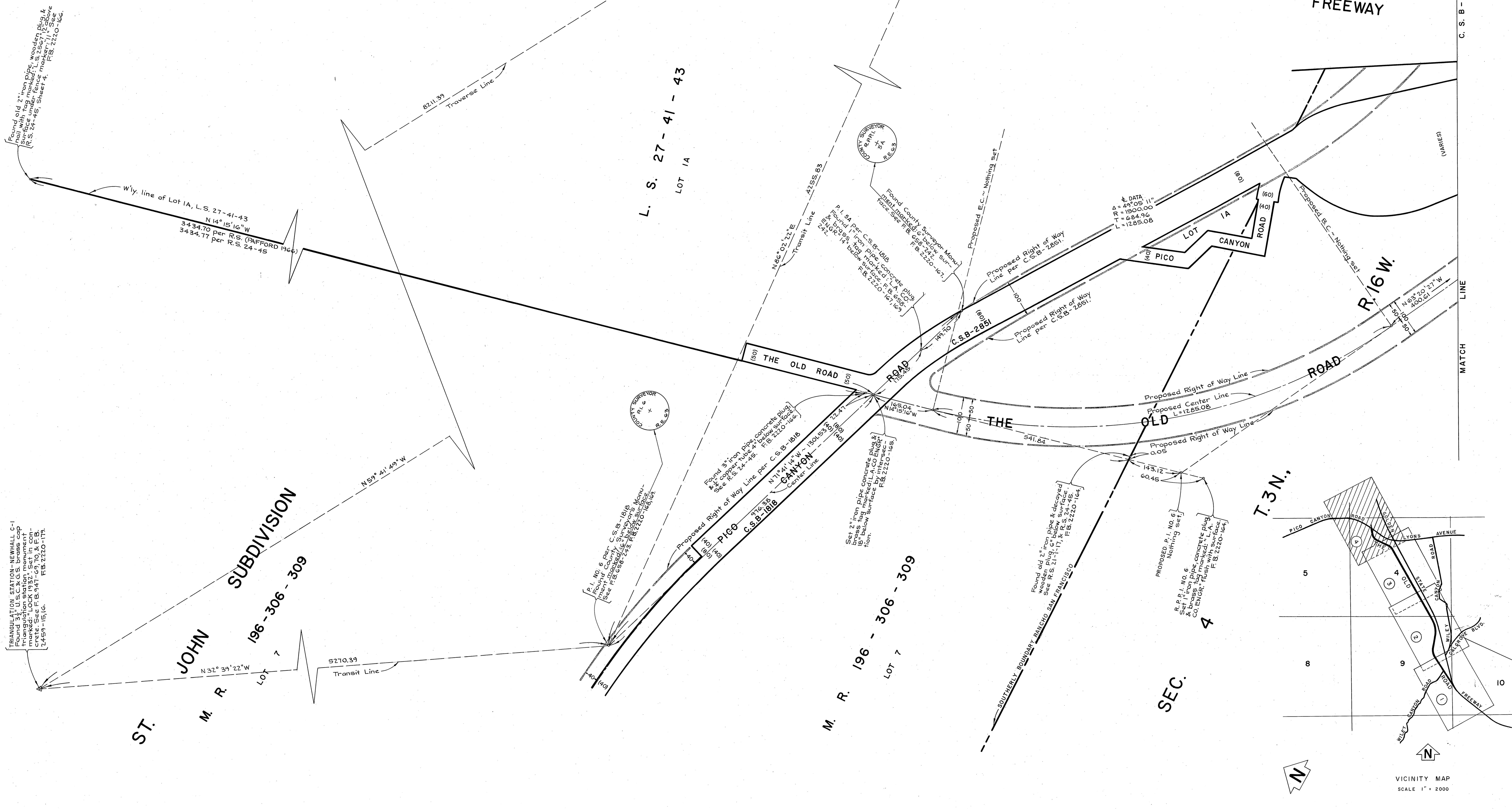
COUNTY OF LOS ANGELES DEPARTMENT OF COUNTY ENGINEER JOHN A. LAMBIE - COUNTY ENGINEER PREPARED BY SURVEY DIVISION C. E. BRUNTY - DIVISION ENGINEER SURVEYED BY J. FULTON CHECKED BY G. D. BAILEY DRAWN BY R. R. SHEAN	ALIGNMENT MAP OF THE OLD ROAD FROM 1800 FEET SOUTHERLY OF CALGROVE BOULEVARD TO PICO CANYON ROAD		COUNTY SURVEYOR'S MAP NO. B-5037 SHEET 2 OF 4 SHEETS FILED: <i>[Signature]</i> 1967 DEPUTY SURVEYED OCT. 9 NOV. 1967 & MAR. 1968 REFERENCE F. B. 2220-145-179	REVISION NO. BY DATE ① B.H.T. 10-14-71
	BASIS OF BEARINGS CALIFORNIA COORDINATE SYSTEM, ZONE 7		JOB NUMBER 0036.62	INDU. MAP NO. 243-097 243-117
			JOB NUMBER 0036.62	INDU. MAP NO. 243-097 243-117



DATA
 A = 35° 22' 14"
 R = 12000.00
 T = 637.72
 L = 1234.67



COUNTY OF LOS ANGELES DEPARTMENT OF COUNTY ENGINEER JOHN A. LAMBE - COUNTY ENGINEER PREPARED BY SURVEY DIVISION C. E. BRUNTY - DIVISION ENGINEER SURVEYED BY J. FULTON CHECKED BY G. D. BAILEY DRAWN BY R. R. SHEAN	ALIGNMENT MAP OF THE OLD ROAD FROM 1800 FEET SOUTHERLY OF CALGROVE BOULEVARD TO PICO CANYON ROAD BASIS OF BEARINGS CALIFORNIA COORDINATE SYSTEM, ZONE 7	COUNTY SURVEYOR'S MAP NO. B-5037 SHEET 3 OF 4 SHEETS FILED <i>156</i> , 19 <i>62</i> SURVEYED OCT. 8 NOV, 1967, & MAR, 1968 REFERENCE F. B. 2220-145-179 JOB NUMBER 0096.62 INDEX MAP NO. 243-087 234-117	REVISION NO. BY DATE



TRANGULATION STATION - NEWHALL E-3
 Found 3 1/2" U.S.C. & G.S. brass cap
 triangulation station monument
 monument marked with L.A. & F.B.
 crests. Size F.B. 1 1/2" x 1 1/2" x 1 1/2".
 F.B. 2459-1179.

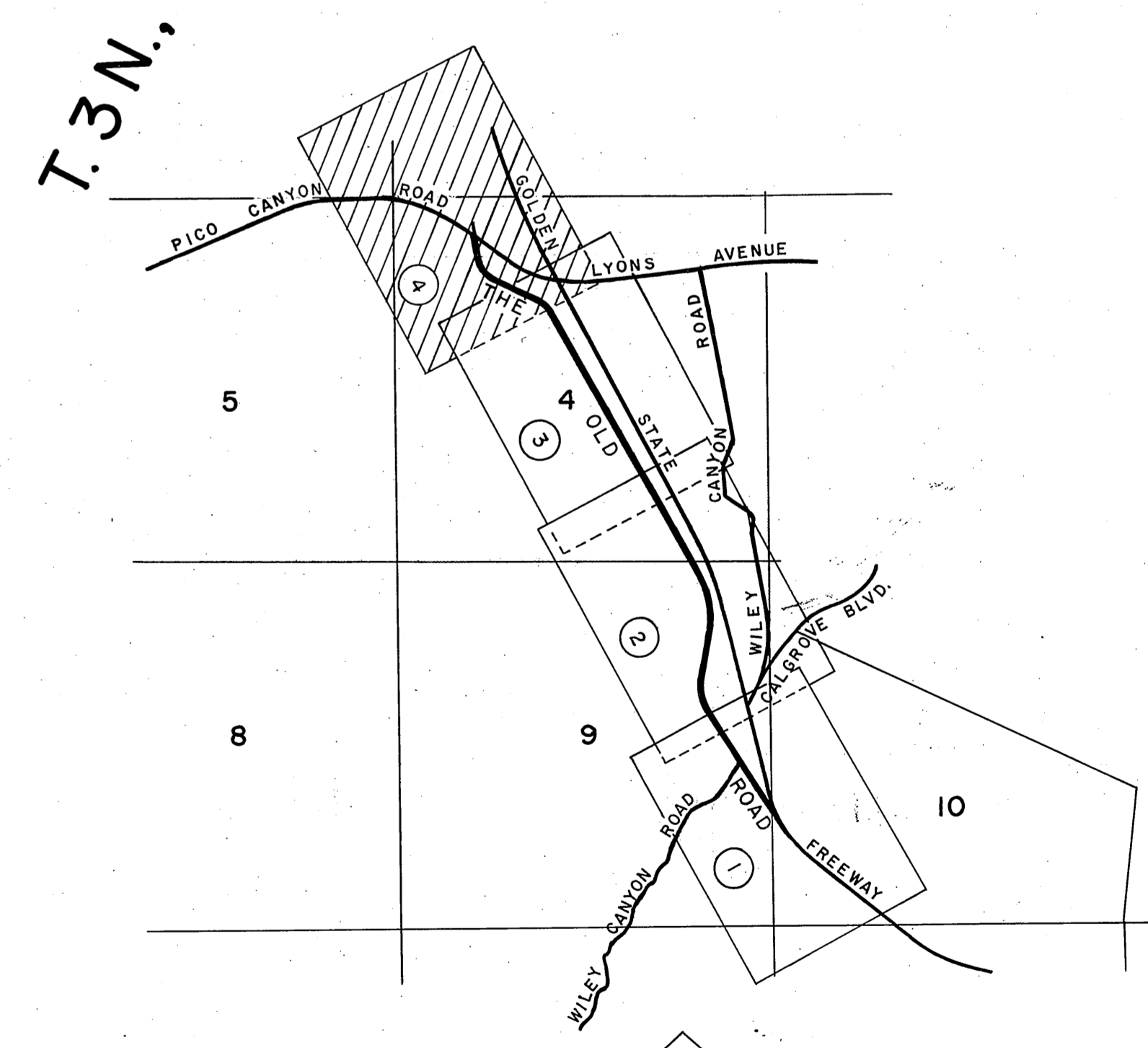
Found old 2 1/2" iron pipe
 surface. High marker. L.A. & F.B.
 crests. Size F.B. 1 1/2" x 1 1/2" x 1 1/2".
 F.B. 2220-1164.

TRAVERSE STATION - NEWHALL E-3
 Found L.A. Co. Survey Control
 Monument, marked: "NEWHALL
 E-3 1956." See F.B. 2459-33,
 34. F.B. 2459-118, 119.

ST. JOHN SUBDIVISION
 M. R. 196-306-309
 Lot 7
 N 32° 39' 22" W
 5270.39
 Transit Line

L. S. 27-41-43
 LOT 1A

M. R. 196-306-309
 Lot 7



SCALE IN FEET
 0 100 200 300

COUNTY OF LOS ANGELES
 DEPARTMENT OF
 COUNTY ENGINEER
 JOHN A. LAMBIE - COUNTY ENGINEER
 PREPARED BY
 SURVEY DIVISION
 C. E. BRUNTY - DIVISION ENGINEER
 SURVEYED BY - J. FULTON
 CHECKED BY - G. D. BAILEY
 DRAWN BY - R. R. SHEAN

ALIGNMENT MAP OF
 THE OLD ROAD
 FROM
 1800 FEET SOUTHERLY
 OF CALGROVE BOULEVARD
 TO
 PICO CANYON ROAD
 BASIS OF BEARINGS
 CALIFORNIA COORDINATE SYSTEM, ZONE 7

COUNTY SURVEYOR'S MAP NO.
B-5037
 SHEET 4 OF 4 SHEETS
 FILED: *[Signature]* 1962
 DEPUTY
 SURVEYED
 OCT. 8 NOV. 1967 & MAR. 1968
 REFERENCE
 F. B. 2220-145-179
 JOB NUMBER
 0096.62
 INDEX MAP NO.
 249-097
 234-117