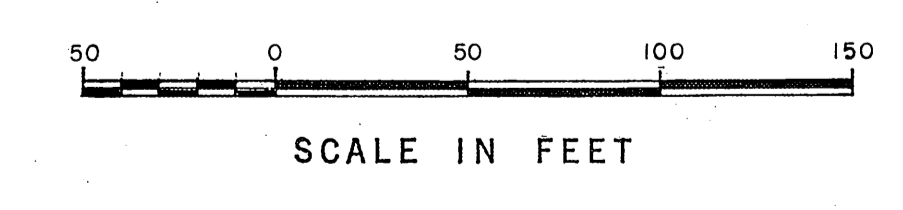
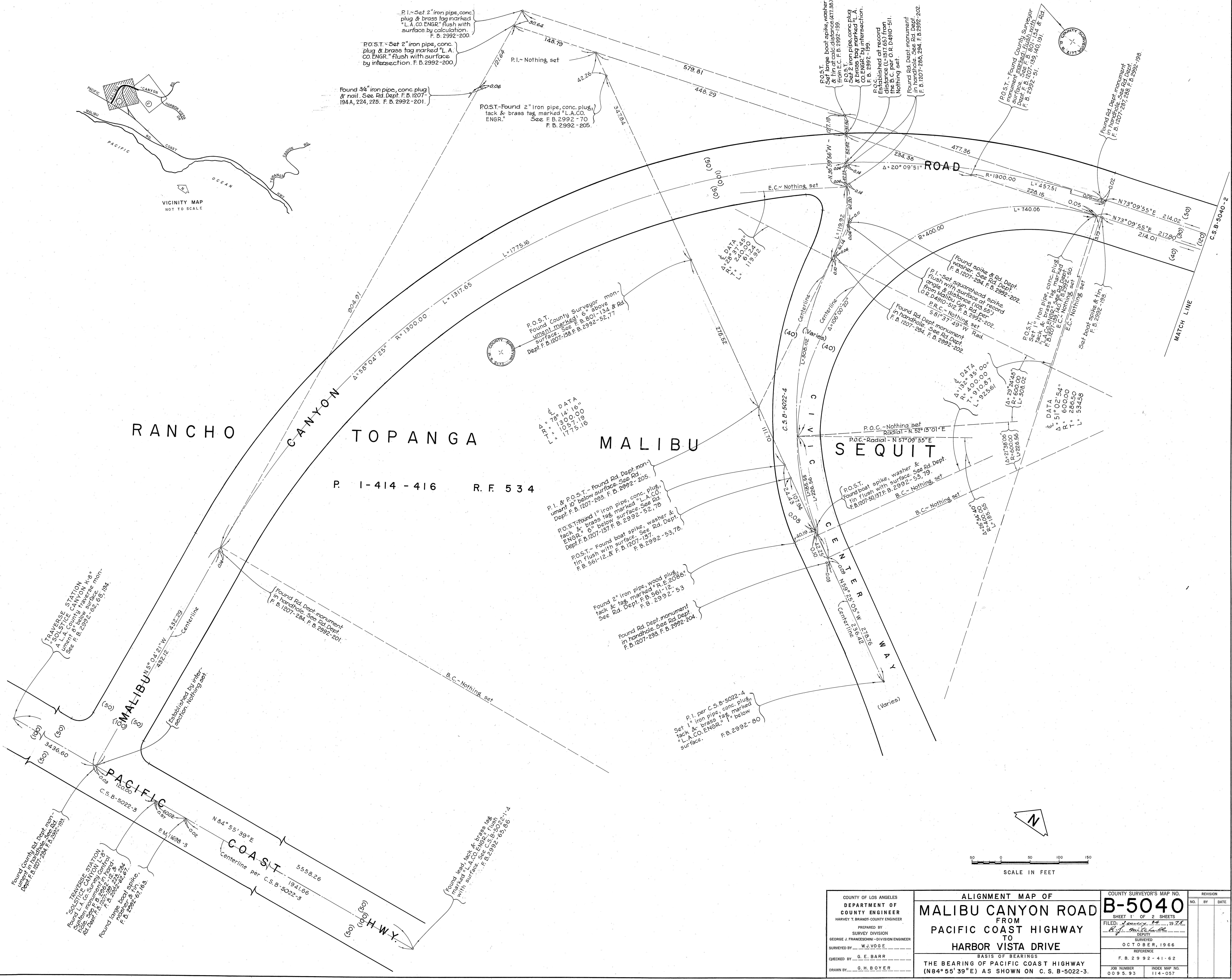


RANCHO TOPANGA MALIBU SEQUIT

P. 1-414-416 R.F. 534



COUNTY OF LOS ANGELES DEPARTMENT OF COUNTY ENGINEER HARVEY T. BRANDT-COUNTY ENGINEER PREPARED BY SURVEY DIVISION GEORGE J. FRANCESCHINI-DIVISION ENGINEER SURVEYED BY W.J. VOGEL CHECKED BY G.E. BARR DRAWN BY G.H. BOYER	ALIGNMENT MAP OF MALIBU CANYON ROAD FROM PACIFIC COAST HIGHWAY TO HARBOR VISTA DRIVE		COUNTY SURVEYOR'S MAP NO. B-5040
	BASIS OF BEARINGS THE BEARING OF PACIFIC COAST HIGHWAY (N84°55'39"E) AS SHOWN ON C.S.B-5022-3.		SHEET 1 OF 2 SHEETS FILED: <i>[Signature]</i> , 19 25 DEPT.
	SURVEYED BY OCTOBER, 1966 REFERENCE F. B. 2992-41-62		REVISION NO. BY DATE
	JOB NUMBER 009.5.93		INDEX MAP NO. 114-057
	DRAWN BY G.H. BOYER		NO. BY DATE

S-0402-B.2.3

RANCHO

TOPANGA

MALIBU

SEQUIT

HARBOR VISTA DR.

MALIBU KNOLLS DR.

P. 1-414-416

R. F. 534

CANYON

R.

MALIBU

WATCH LINE

Found 2" x 2" stake & nail
2" above surface. See plat
Dopt. F. B. 2992-44

Found County Surveyor
monument marked "L" in
below surface. See F. B.
801-137 F. B. 2992-43

Existing P.I. = 103.57
Found below surface. Resealed
same with 1" iron pipe, conc.
plug, lock & brass pipe marked
"L.A.C.S. ENGR." 12" below sur-
face. See Plat F. B. 2992-46, 196

POST - iron spike, washer & tin
5/8" flat with s.r. F. B. 2992-46

Found square head spike & tin
1/2" flush with surface.
See Plat Dopt. F. B. 2992-47, 196

Existing L. Data
A = 16° 45' 40"
L = 1500.00
L = 220.98
L = 438.81

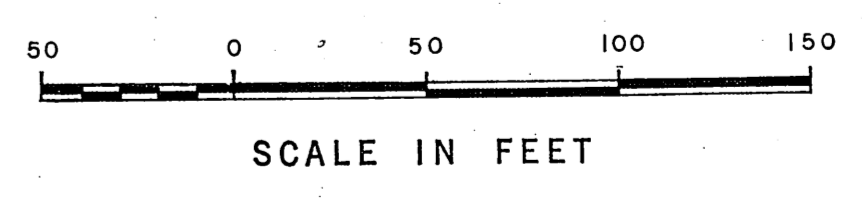
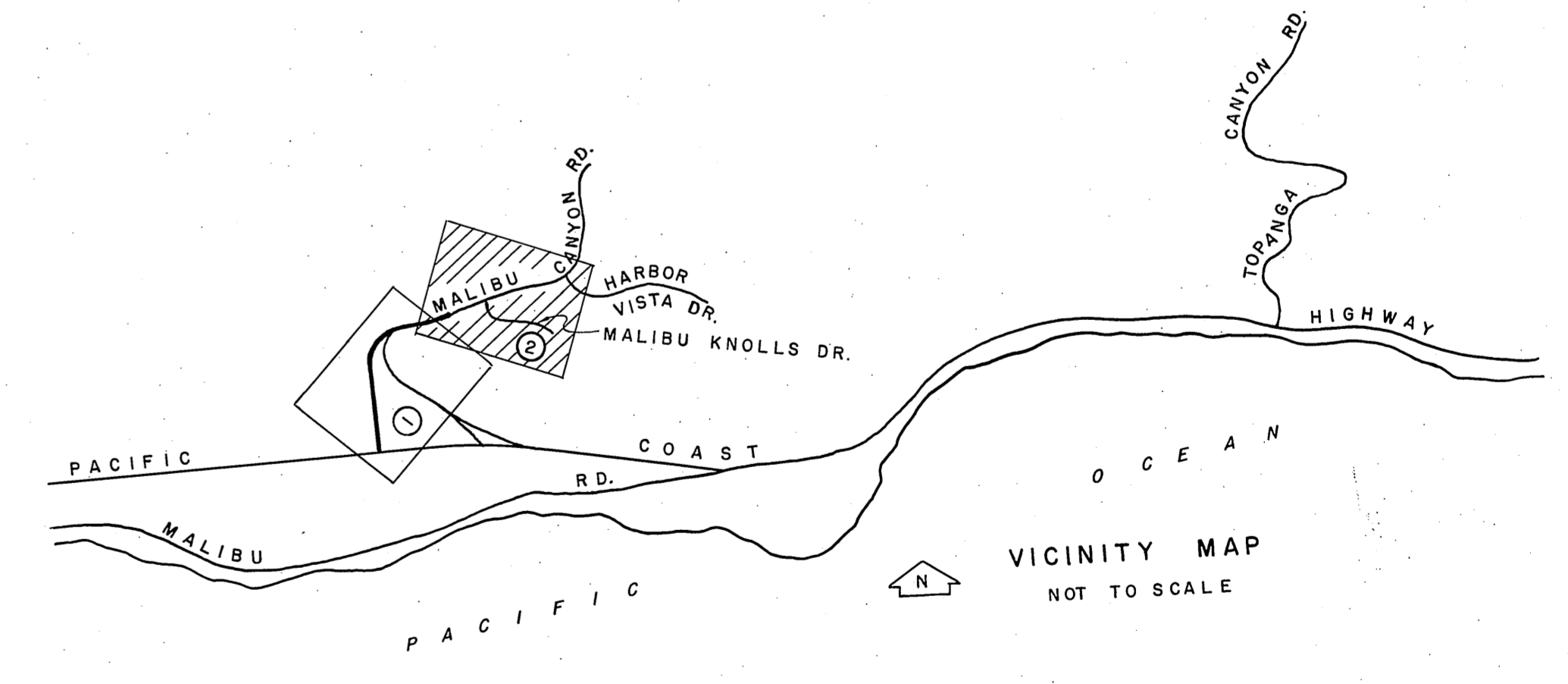
A = 16° 45' 40"
L = 1500.00
L = 220.98
L = 438.81

Found red Dept. monument
in Harbor Vista Dr. plat.
See Plat F. B. 1207-290, F. B. 2992-197

POST - iron pipe, conc. plug, lock
& brass tag marked "L.A.C.S. ENGR."
1" below surface. F. B. 2992-73, 197

Found red Dept. monument
in Harbor Vista Dr. plat.
See Plat F. B. 1207-289, F. B. 2992-199

Found 1 1/2" iron pipe, conc.
plug, lock & brass tag marked
"L.A.C.S. ENGR." 12" below sur-
face. See Plat F. B. 1207-289, F. B. 2992-199



COUNTY OF LOS ANGELES
DEPARTMENT OF
COUNTY ENGINEER
HARVEY T. BRANDT - COUNTY ENGINEER
PREPARED BY
SURVEY DIVISION
GEORGE J. FRANCESCHINI - DIVISION ENGINEER
SURVEYED BY W. J. VOSE
CHECKED BY G. E. BARR
DRAWN BY G. H. BOYER

ALIGNMENT MAP OF
MALIBU CANYON ROAD
FROM
PACIFIC COAST HIGHWAY
TO
HARBOR VISTA DRIVE
BASIS OF BEARINGS
THE BEARING OF PACIFIC COAST HIGHWAY
(N84°55'39"E) AS SHOWN ON C. S. B-5022-3.

COUNTY SURVEYOR'S MAP NO. B-5040		REVISION
SHEET 2 OF 2 SHEETS		NO. BY DATE
FILED <i>January 24</i> 19 <i>76</i>		
DEPUTY SURVEYOR OCTOBER, 1966		
REFERENCE F. B. 2992-41-62		
JOB NUMBER 0099-93	INDEX MAP NO. 114-057	

C.S.B-2040-5