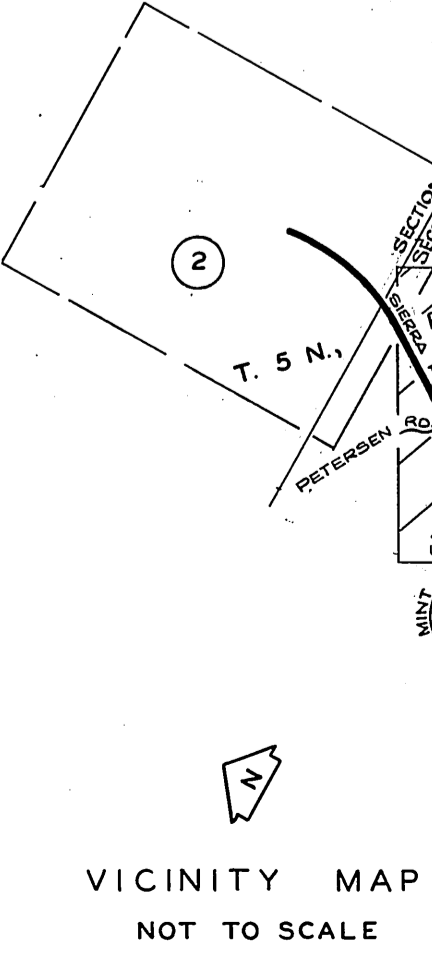


DETAIL NOT TO SCALE

SECTION

PORTION



SCALE IN FEET

COUNTY OF LOS ANGELES
 DEPARTMENT OF
 COUNTY ENGINEER
 JOHN A. LAMBIE - COUNTY ENGINEER
 PREPARED BY
 SURVEY DIVISION
 C. E. BRUNTY - DIVISION ENGINEER
 SURVEYED BY J. E. MENNE
 CHECKED BY W. A. EDMONDSON
 DRAWN BY T. ABE

ALIGNMENT MAP OF
SIERRA PELONA ROAD
 FROM
SIERRA HIGHWAY
 TO
NORTH LINE SECTION 14, T. 5 N., R. 14 W.
 BASIS OF BEARINGS
 THE BEARING OF THE SOUTH LINE OF SECTION 14, T. 5 N., R. 14 W. (N. 89°46'45\"/>

COUNTY SURVEYOR'S MAP NO.
B-5041
 SHEET 1 OF 2 SHEETS
 FILED: 4/17/68
 DEPUTY: *George J. Brumby*
 SURVEYED: APRIL - JUNE 1968
 REFERENCE: F. B. 3202-159-207
 JOB NUMBER: 0096.32 INDEX MAP NO.: 78

NO.	BY	DATE

SECTION CORNER
Found large mound of rocks
with County Engineer monument
marked. 2' above surface in large
mound of rocks.
F. B. 3202 - 189, 204

1/4 SECTION CORNER
Set County Engineer monu-
ment marked at midpoint
between section corners on
the east.
F. B. 3202 - 195, 207

SECTION CORNER
Found remains of old Juniper
stake in mound of rocks. See
L.S. 22-33. C.S.B. 900-2. Replaced
with County Engineer monument
marked.
F. B. 3202 - 193

1/4 SECTION CORNER
Found 3/4" iron pipe in mound
of rocks. See L.S. 22-33 & C.S.
900-2. Replaced with County
Engineer monument marked.
2' above surface in mound of
rocks.
F. B. 3202 - 191

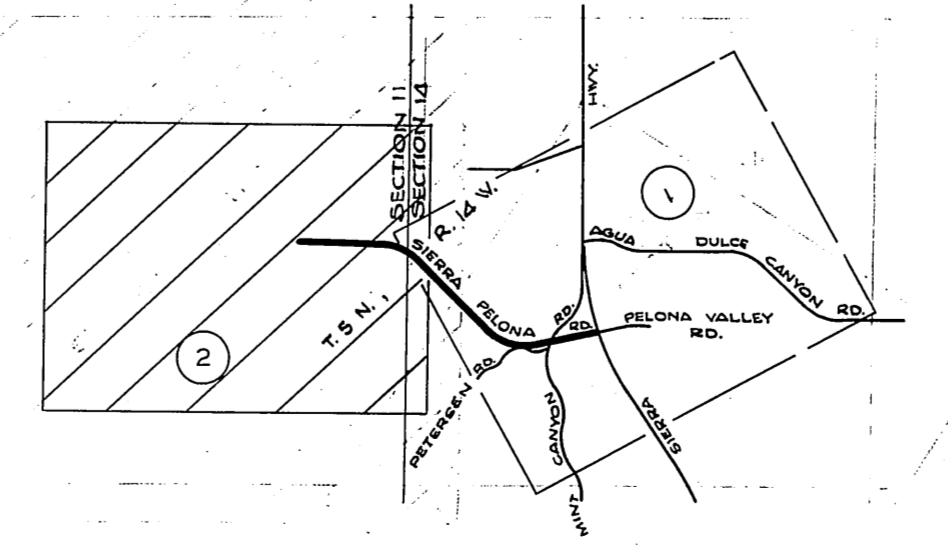
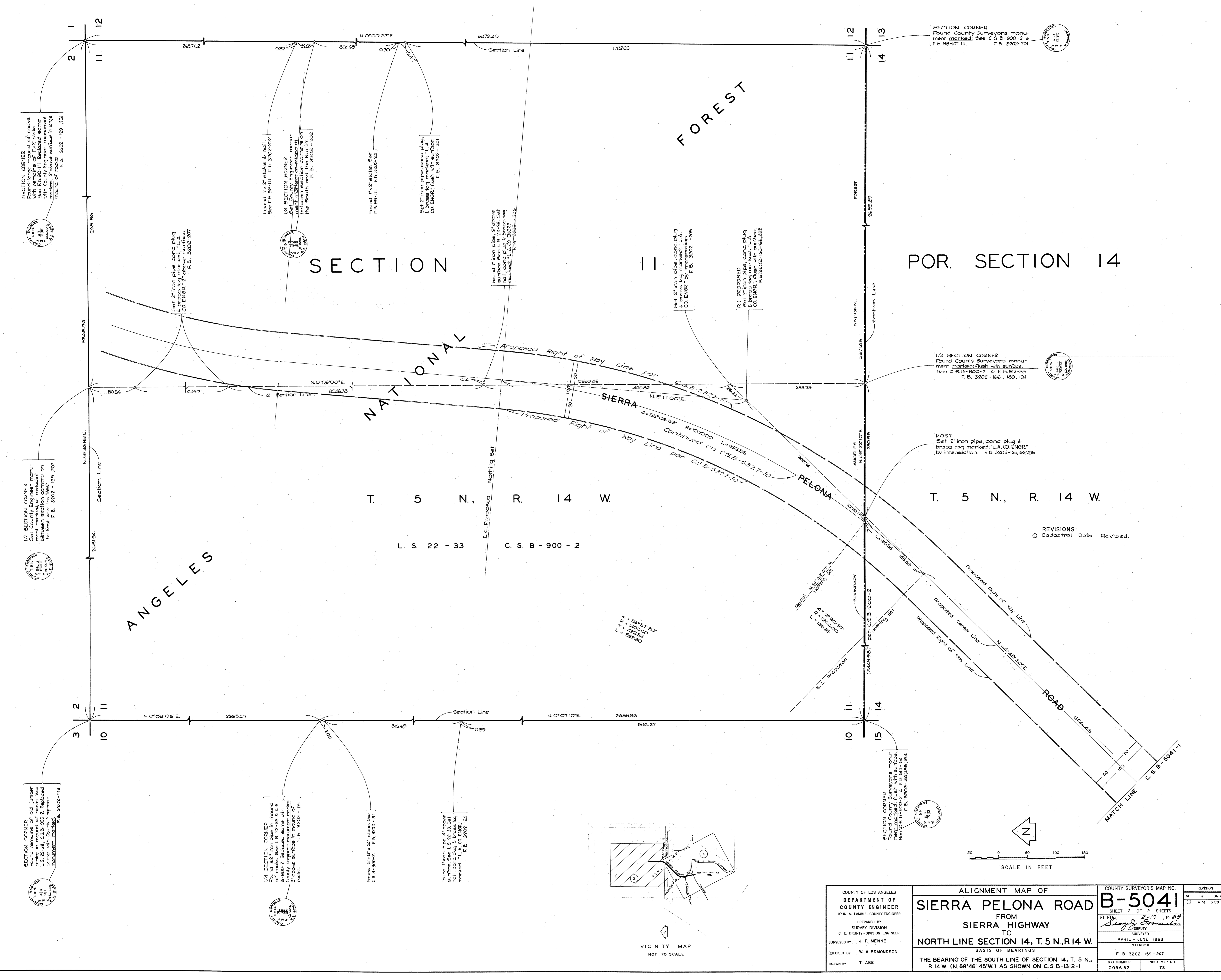
Found 1/2" iron pipe 2' above
surface. See L.S. 22-33. Set
nail, conc. plug & brass tag
marked. "L.A. CO. ENGR."
F. B. 3202 - 194

SECTION CORNER
Found County Surveyors monu-
ment marked. See C.S.B. 900-2 &
F. B. 98-107, III.
F. B. 3202 - 201

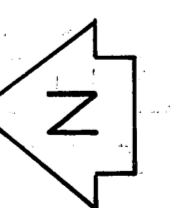
1/4 SECTION CORNER
Found County Surveyors monu-
ment marked. Flush with surface.
See C.S.B. 900-2 & F. B. 512-85
F. B. 3202 - 166, 189, 194

POST.
Set 2" iron pipe, conc. plug &
brass tag marked "L.A. CO. ENGR."
by intersection. F. B. 3202-165, 166, 205

SECTION CORNER
Found County Surveyors monu-
ment marked. See L.S. 22-33 &
C.S.B. 900-2. L. F. B. 512 - 81.
F. B. 3202-166, 189, 194



VICINITY MAP
NOT TO SCALE



SCALE IN FEET
0 50 100 150

REVISIONS:
① Cadastral Data Revised.

COUNTY OF LOS ANGELES
DEPARTMENT OF
COUNTY ENGINEER
JOHN A. LAMBIE - COUNTY ENGINEER
PREPARED BY
SURVEY DIVISION
C. E. BRUNTY - DIVISION ENGINEER
SURVEYED BY J. R. MENNE
CHECKED BY W. A. EDMONDSON
DRAWN BY T. ABE

ALIGNMENT MAP OF
SIERRA PELONA ROAD
FROM
SIERRA HIGHWAY
TO
NORTH LINE SECTION 14, T. 5 N., R. 14 W.
BASIS OF BEARINGS
THE BEARING OF THE SOUTH LINE OF SECTION 14, T. 5 N.,
R. 14 W. (N. 89° 46' 45" W.) AS SHOWN ON C.S.B.-1312-1

COUNTY SURVEYOR'S MAP NO. B-5041		REVISION	
SHEET 2 OF 2 SHEETS		NO.	DATE
FILED <u>2-17-68</u> 1968		①	A.M. 5-29-70
SURVEYED <u>John A. Lambie</u> DEPUTY			
APRIL - JUNE 1968			
REFERENCE			
F. B. 3202 159 - 207			
JOB NUMBER 0096.32	INDEX MAP NO. 78		