

Center of section set monument marked flush with surface by intersection F.B. 3255-199

1/4 Section Corner set iron pipe, conc. plug and brass tag marked "L.A. CO. ENGR" at midpoint between center of section to the east and 1/4 to the west above surface. F.B. 3255-200

Set 1" iron pipe, conc. plug and brass tag marked "L.A. CO. ENGR" at midpoint between center of section to the east and 1/4 to the west above surface. F.B. 3255-202

1/4 SECTION CORNER Found County Surveyors' Monument marked flush with surface. See C.S.B.-1350 F.B. 3255-11, 115

Set 1" iron pipe, conc. plug and brass tag marked "L.A. CO. ENGR" flush with surface. F.B. 3255-12

Found iron pipe, conc. plug and brass tag marked "L.A. CO. ENGR" above surface. F.B. 3255-206

Set 2" iron pipe, conc. plug and brass tag marked "L.A. CO. ENGR" flush with surface. F.B. 3255-208

Proposed P1 Set 2" iron pipe, conc. plug and brass tag marked "L.A. CO. ENGR" flush with surface. F.B. 3255-209

Set 2" iron pipe, conc. plug and brass tag marked "L.A. CO. ENGR" flush with surface. F.B. 3255-112

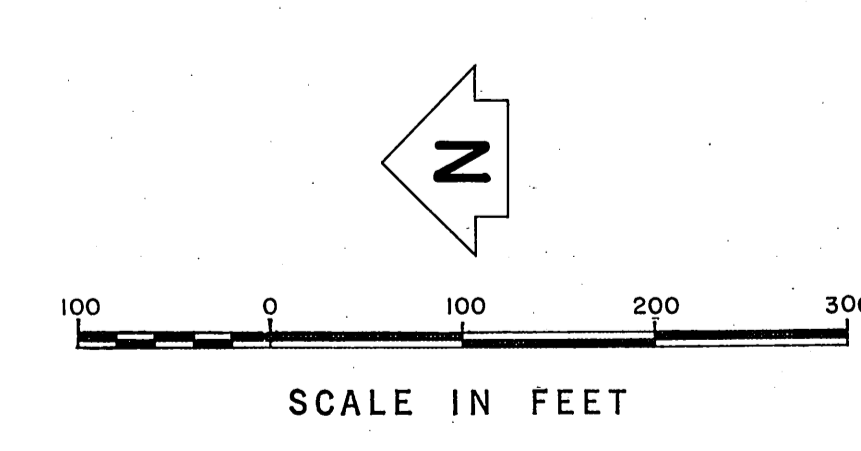
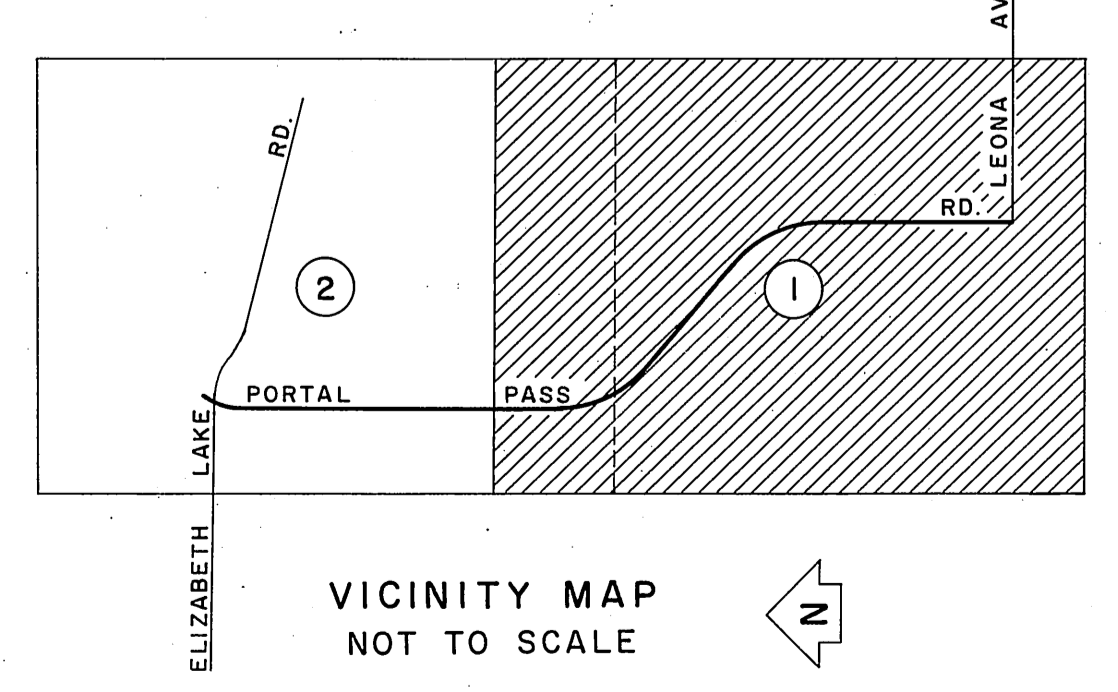
1/4 SECTION CORNER Established at midpoint between Section Corner to the west and 1/4 to the east per survey plat. See F.B. 3255-205

NOTE: THE ALIGNMENT OF THE "SECONDARY" HIGHWAY PROPOSED IN THE MASTER PLAN OF HIGHWAYS NOT ESTABLISHED, FEB. 1969.

SECTION CORNER Found County Surveyors' Monument marked in handhole. See C.S.B.-1350, F.B. 34-100, F.B. 527-15, 22, F.B. 3255-17, 196

1/4 SECTION CORNER Found County Surveyors' Monument marked 5" below surface 0.34' N'ly of line. Point appears disturbed. Reset same on line. See F.B. 527-26, C.S.B.-1350, F.B. 3255-16, 196-205

REVISION:
① Center Line Realignment of Portal Pass Rd.



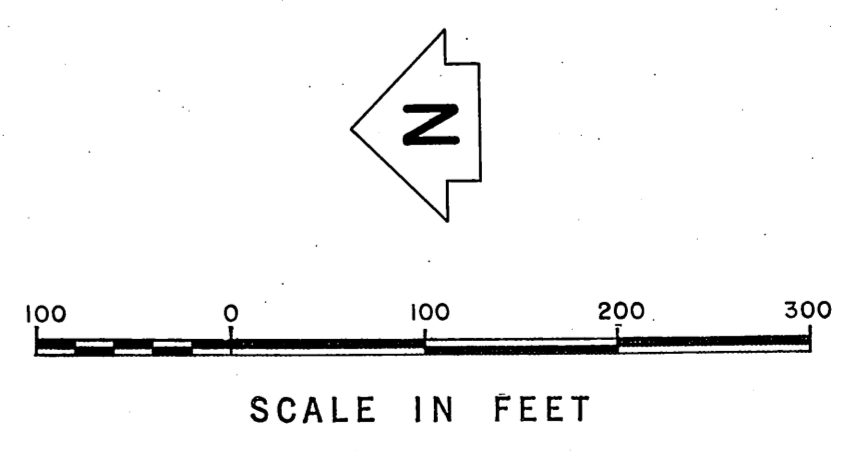
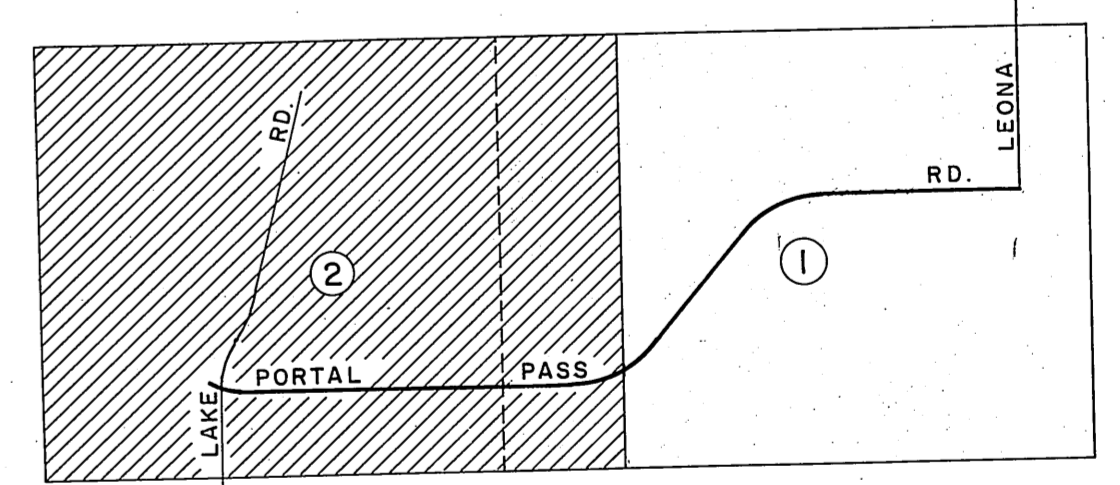
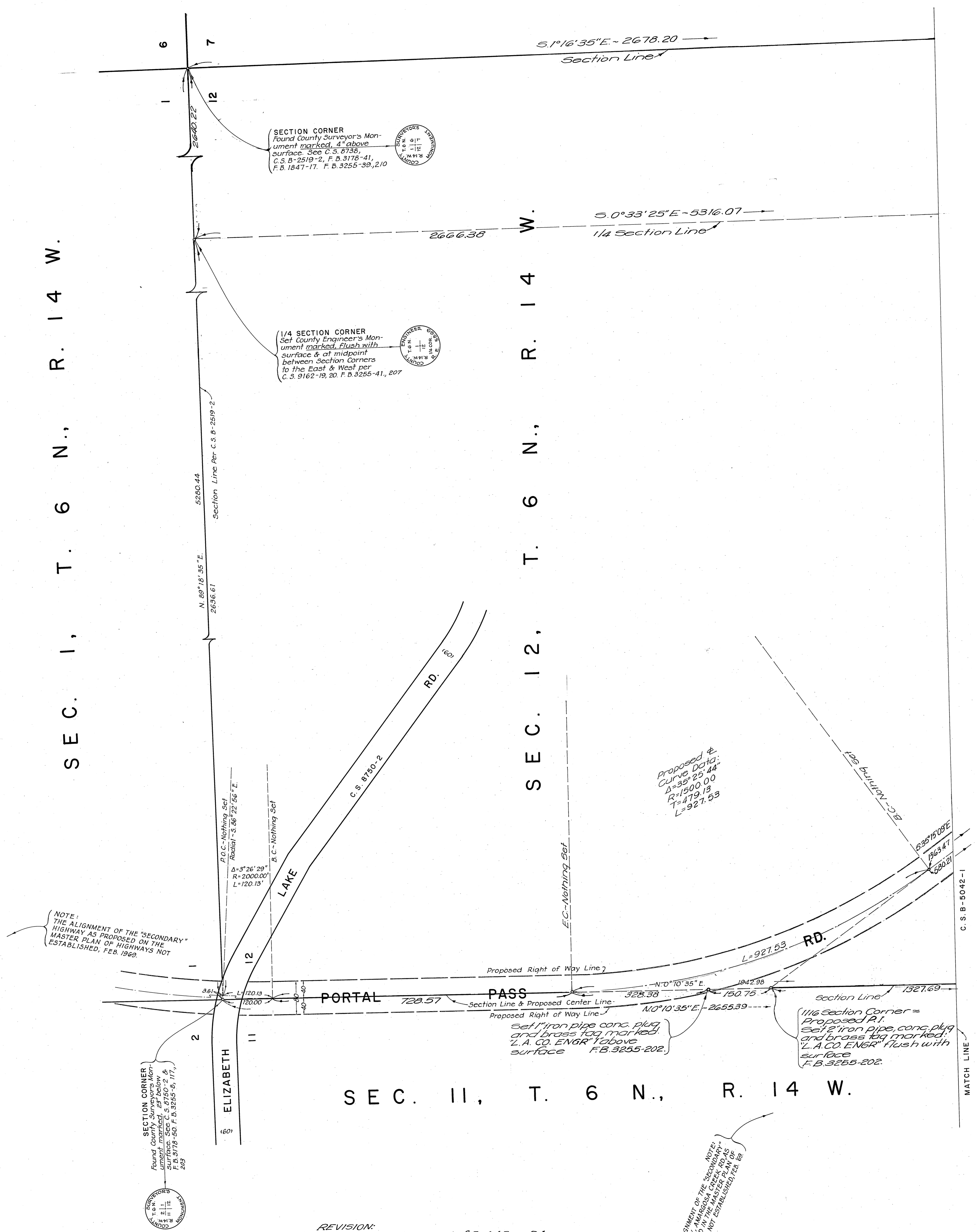
COUNTY OF LOS ANGELES DEPARTMENT OF COUNTY ENGINEER JOHN A. LAMBIE - COUNTY ENGINEER PREPARED BY SURVEY DIVISION C. E. BRUNTY - DIVISION ENGINEER CHECKED BY S. HALISKY DRAWN BY D. SARPELL B. GOINS M. HAMASU	ALIGNMENT MAP OF PORTAL PASS ROAD FROM LEONA AVENUE TO N'LY LINE OF SECTIONS 12, 13, 14, T. 6 N., R. 14 W.		COUNTY SURVEYOR'S MAP NO. B-5042
	BASIS OF BEARINGS THE BEARING OF THE NORTH LINE OF SECTION 12, T. 6 N., R. 14 W. AS SHOWN ON C.S.B.-2519-2.		SHEET 1 OF 2 SHEETS FILED: 2-22-1962 SURVEYED MAY - JULY 1965; JUNE 1967 REFERENCE F.B. 3255-8-17, 39-41, 110-117
	JOB NUMBER 0206.52		INDEX MAP NO. 78
	REVISION NO. BY DATE ① R.G. 12-78		

C.S.B-2045-5

SEC. I, T. 6 N., R. 14 W.

SEC. 12, T. 6 N., R. 14 W.

SEC. II, T. 6 N., R. 14 W.



REVISION:
 a Center Line Realignment of Portal Pass Rd

NOTE:
 THE ALIGNMENT OF THE "SECONDARY" HIGHWAY AS PROPOSED ON THE MASTER PLAN OF HIGHWAYS NOT ESTABLISHED, FEB. 1962.

COUNTY OF LOS ANGELES DEPARTMENT OF COUNTY ENGINEER JOHN A. LAMBE, COUNTY ENGINEER PREPARED BY SURVEY DIVISION C. E. BRUNTY, DIVISION ENGINEER SURVEYED BY S. HALISKY CHECKED BY D. SAPPPELL S. GOINS DRAWN BY M. HAMASU	ALIGNMENT MAP OF PORTAL PASS ROAD FROM LEONA AVENUE TO N'LY LINE OF SECTIONS 11 & 12, T. 6 N., R. 14 W. BASIS OF BEARINGS THE BEARING OF THE NORTH LINE OF SECTION 12, T. 6 N., R. 14 W. AS SHOWN ON C.S.B-2519-2.	COUNTY SURVEYOR'S MAP NO. B-5042	REVISION NO. BY DATE 1 RG 12-78
		SHEET 2 OF 2 SHEETS FILED: 2-21 1962 SURVEYED MAY - JULY 1965; JUNE 1967 REFERENCE F.B. 3255-8-17, 39-41, 110-117 JOB NUMBER 020652 INDEX MAP NO. 78	

C.S.B-2045-5