

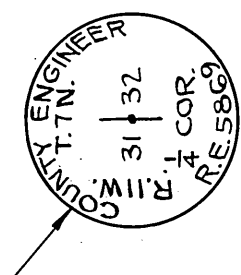
SECTION

32

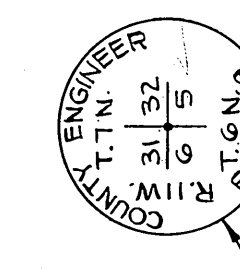
T. 7 N.,

R. 11 W.

SECTION CORNER
Found County Engineer Monument
marked: in handhole. See F.B. 3221-
90, & F.B. 3291-12. F.B. 1662-140.



SECTION CORNER
Found County Engineer Monument
marked: in handhole. See F.B. 3221-
11. F.B. 1662-137.



30TH

N0° 36' 58" W

2668.39

5336.41

2668.02

STREET

EAST

32

AVENUE
M

5

Proposed Right of Way Line

Center Line & Section Line

Proposed Right of Way Line

C. S. B. - 5044-2

MATCH LINE

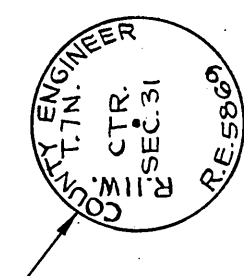
SECTION

31

T. 7 N.,

R. 11 W.

CENTER OF SECTION
Set County Engineer Monument
marked: 12" below surface by inter-
section. F.B. 1662-139.



NOTE:
THE ALIGNMENT OF THE MAJOR
HIGHWAY AS PROPOSED ON THE
MASTER PLAN OF HIGHWAYS NOT
BEING SHOWN ON THIS MAP.
THE FILING OF THIS MAP.

25TH

N0° 44' 38" W

2651.77

5319.29

2661.52

STREET

EAST

31

R. 11 W.

R. 11 W.

T. 7 N.,

T. 6 N.,

5362.60

2661.53

Section Line

N 89° 43' 42" E

2661.53

Section Line

N 89° 43' 42" E

2661.53

Section Line

N 89° 43' 42" E

2661.53

Section Line

N 89° 43' 42" E

2661.53

Section Line

N 89° 43' 42" E

2661.53

Section Line

N 89° 43' 42" E

2661.53

Section Line

N 89° 43' 42" E

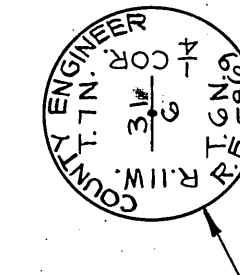
2661.53

Section Line

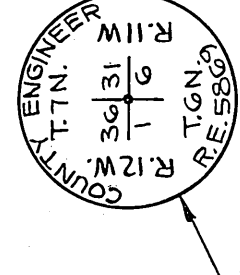
N 89° 43' 42" E

2661.53

SECTION CORNER
Found County Engineer Monument
marked: in handhole. See F.B. 3291-
9. F.B. 1662-136.



SECTION CORNER
Found County Engineer Monument
marked: in handhole. See F.B. 3291-
10. F.B. 1662-85,135.



N 89° 35' 02" E

2688.37

Section Line

N 89° 35' 02" E

2688.37

Section Line

N 89° 35' 02" E

2688.37

Section Line

N 89° 35' 02" E

2688.37

Section Line

N 89° 35' 02" E

2688.37

Section Line

N 89° 35' 02" E

2688.37

Section Line

N 89° 35' 02" E

2688.37

Section Line

N 89° 35' 02" E

2688.37

Section Line

N 89° 35' 02" E

2688.37

Section Line

N 89° 35' 02" E

2688.37

Section Line

N 89° 35' 02" E

2688.37

Section Line

N 89° 35' 02" E

2688.37

Section Line

N 89° 35' 02" E

2688.37

Section Line

N 89° 35' 02" E

2688.37

Section Line

N 89° 35' 02" E

2688.37

Section Line

N 89° 35' 02" E

2688.37

Section Line

N 89° 35' 02" E

2688.37

Section Line

N 89° 35' 02" E

2688.37

Section Line

N 89° 35' 02" E

2688.37

Section Line

N 89° 35' 02" E

2688.37

Section Line

N 89° 35' 02" E

2688.37

Section Line

N 89° 35' 02" E

2688.37

Section Line

N 89° 35' 02" E

2688.37

Section Line

N 89° 35' 02" E

2688.37

Section Line

N 89° 35' 02" E

2688.37

Section Line

N 89° 35' 02" E

2688.37

Section Line

N 89° 35' 02" E

2688.37

Section Line

N 89° 35' 02" E

2688.37

Section Line

N 89° 35' 02" E

2688.37

Section Line

N 89° 35' 02" E

2688.37

Section Line

N 89° 35' 02" E

2688.37

Section Line

N 89° 35' 02" E

2688.37

Section Line

N 89° 35' 02" E

2688.37

Section Line

N 89° 35' 02" E

2688.37

Section Line

N 89° 35' 02" E

2688.37

Section Line

N 89° 35' 02" E

2688.37

Section Line

N 89° 35' 02" E

2688.37

Section Line

N 89° 35' 02" E

2688.37

Section Line

N 89° 35' 02" E

2688.37

Section Line

N 89° 35' 02" E

2688.37

Section Line

N 89° 35' 02" E

2688.37

Section Line

N 89° 35' 02" E

2688.37

Section Line

N 89° 35' 02" E

2688.37

Section Line

N 89° 35' 02" E

2688.37

Section Line

N 89° 35' 02" E

2688.37

Section Line

N 89° 35' 02" E

2688.37

Section Line

N 89° 35' 02" E

2688.37

Section Line

N 89° 35' 02" E

2688.37

Section Line

N 89° 35' 02" E

2688.37

Section Line

N 89° 35' 02" E

2688.37

Section Line

N 89° 35' 02" E

2688.37

Section Line

N 89° 35' 02" E

2688.37

Section Line

N 89° 35' 02" E

2688.37

Section Line

N 89° 35' 02" E

2688.37

Section Line

N 89° 35' 02" E

2688.37

Section Line

N 89° 35' 02" E

2688.37

Section Line

N 89° 35' 02" E

2688.37

Section Line

N 89° 35' 02" E

2688.37

Section Line

N 89° 35' 02" E

2688.37

Section Line

N 89° 35' 02" E

2688.37

Section Line

N 89° 35' 02" E

2688.37

Section Line

N 89° 35' 02" E

2688.37

Section Line

N 89° 35' 02" E

2688.37

Section Line

N 89° 35' 02" E

2688.37

Section Line

N 89° 35' 02" E

2688.37

Section Line

N 89° 35' 02" E

2688.37

Section Line

N 89° 35' 02" E

2688.37

Section Line

N 89° 35' 02" E

2688.37

Section Line

N 89° 35' 02" E

2688.37

Section Line

N 89° 35' 02" E

2688.37

Section Line

N 89° 35' 02" E

2688.37

Section Line

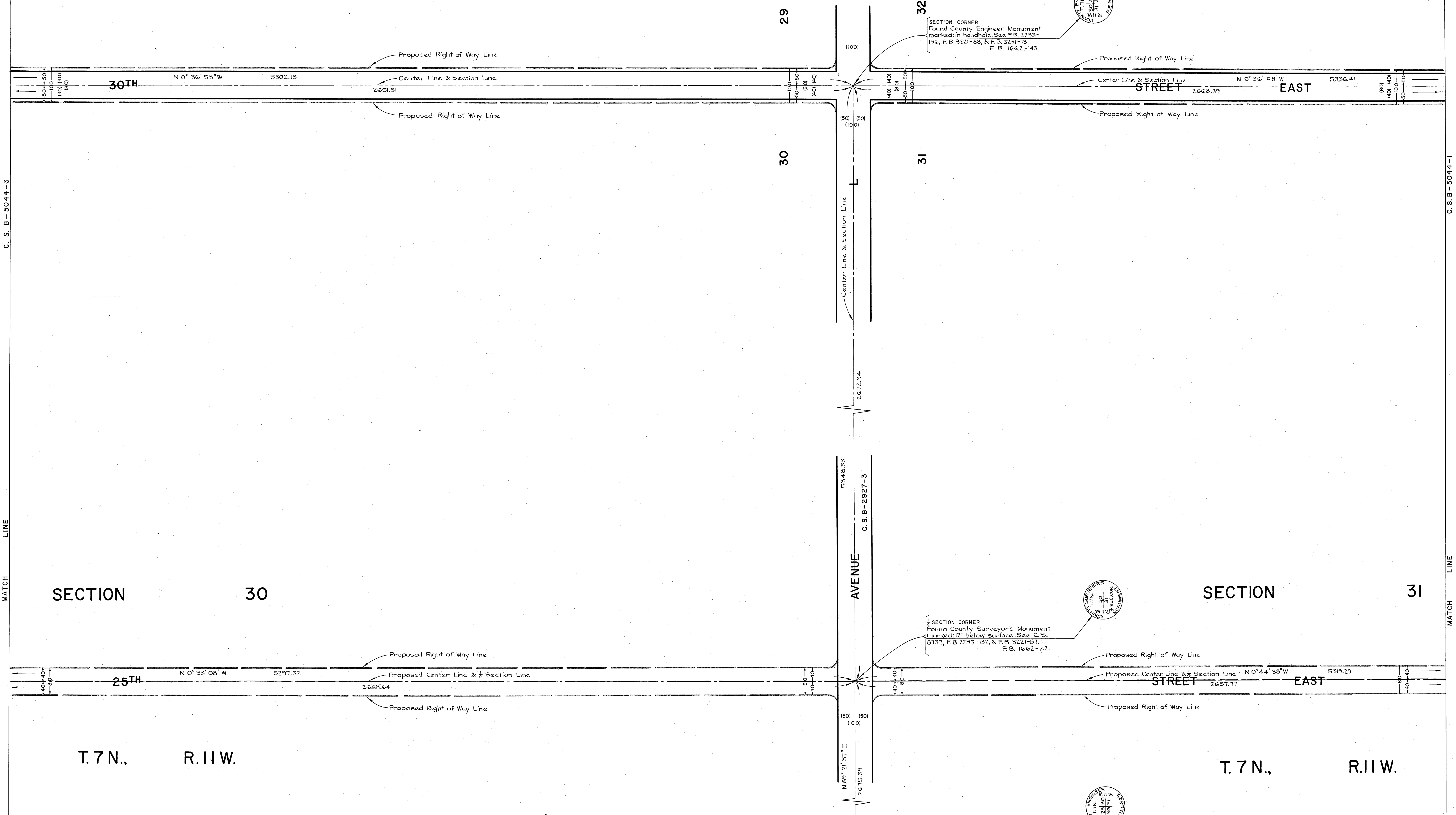
C.S.B-2044-5

SECTION 29

SECTION 32

T.7N., R.11W.

T.7N., R.11W.



C. S. B - 5044 - 3

C. S. B - 5044 - 1

MATCH LINE

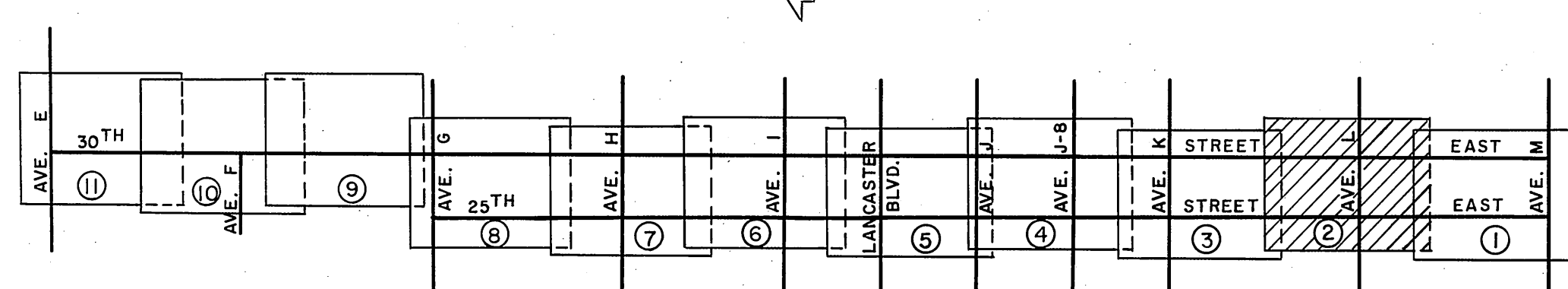
MATCH LINE

SECTION 30

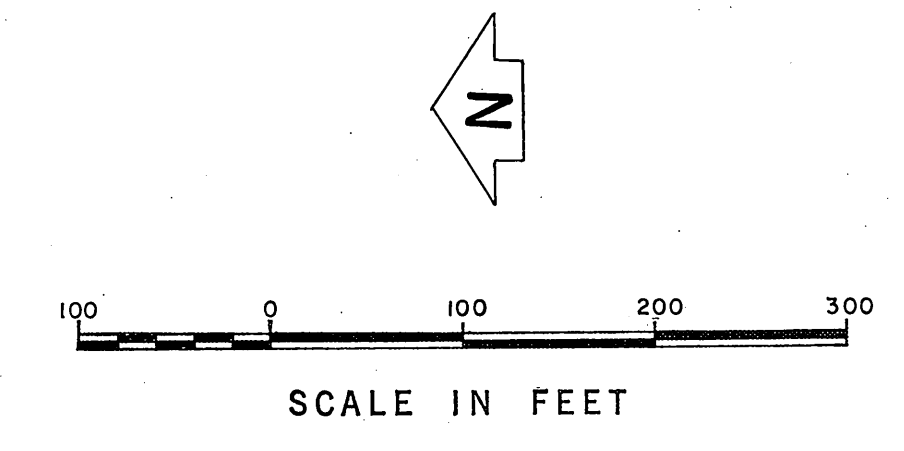
SECTION 31

T.7N., R.11W.

T.7N., R.11W.



VICINITY MAP NOT TO SCALE



SECTION CORNER
 Found County Engineer Monument
 marked in handhole. See F.B. 2293-136, F.B. 3221-88, & F.B. 3291-13.
 F. B. 1662-143.

SECTION CORNER
 Found County Surveyor's Monument
 marked 12" below surface. See C.S. 8131, F.B. 2293-137, & F.B. 3221-87.
 F. B. 1662-142.

SECTION CORNER
 Found County Engineer Monument
 marked in handhole. See F.B. 2293-131, & 3221-84. F. B. 1662-100, 141.

COUNTY OF LOS ANGELES DEPARTMENT OF COUNTY ENGINEER JOHN A. LAMBIE - COUNTY ENGINEER PREPARED BY SURVEY DIVISION C. E. BRUNTY - DIVISION ENGINEER SURVEYED BY J. MENDONCA CHECKED BY R. S. HILARIO DRAWN BY R. R. SHEAN	ALIGNMENT MAP OF 25TH STREET EAST FROM AVENUE M TO AVENUE G AND 30TH STREET EAST FROM AVENUE M TO AVENUE E BASIS OF BEARINGS CALIFORNIA COORDINATE SYSTEM ZONE 7		COUNTY SURVEYOR'S MAP NO. B-5044 SHEET 2 OF 11 SHEETS FILED: <i>6/12/67</i> , 1967 DEPUTY SURVEYED FEB. - AUG, 1967 REFERENCE F. B. 1662-131-193 JOB NUMBER 0075-41, 0075-32	REVISION NO. BY DATE
			INDEX MAP NO. 70	

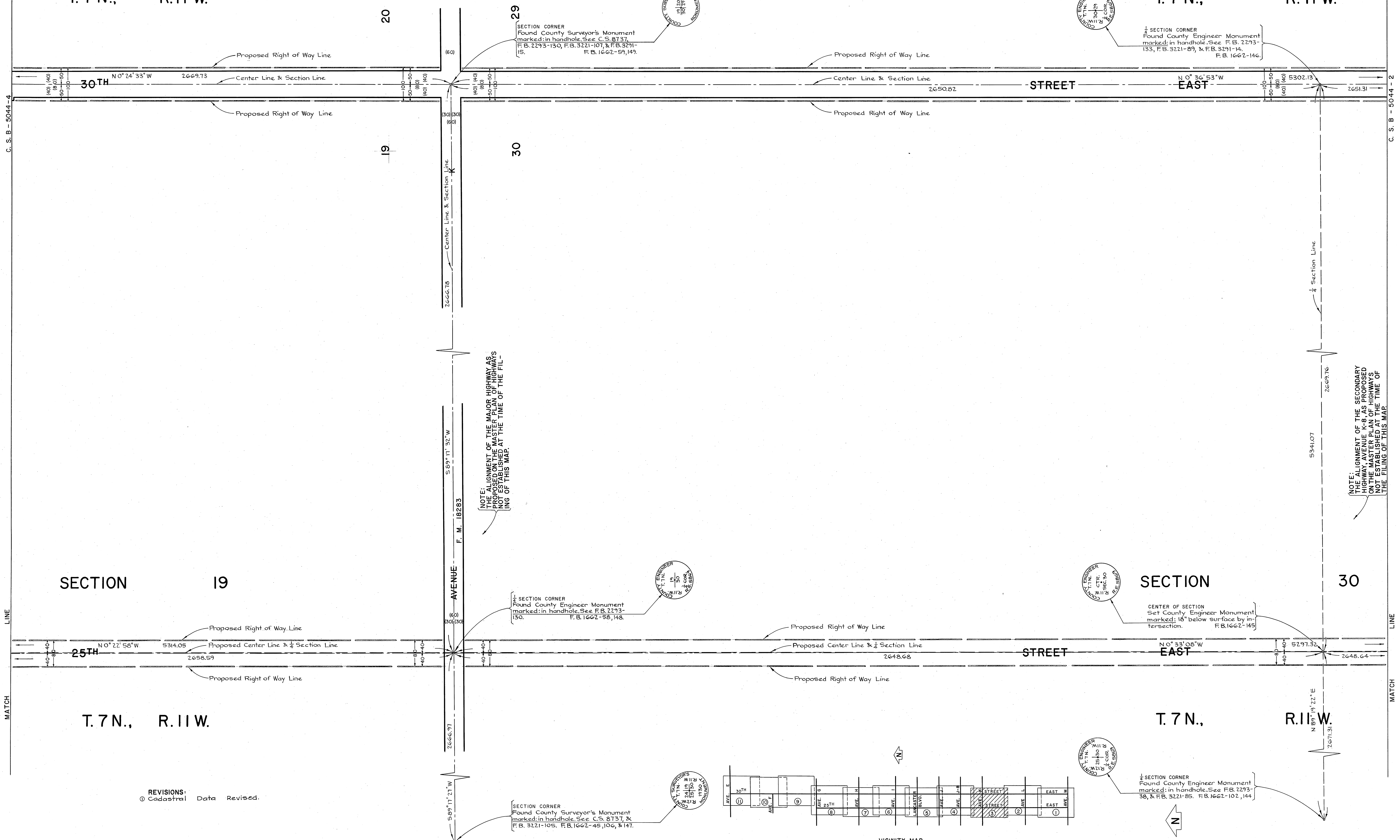
C.S.B-2044-5

SECTION 20

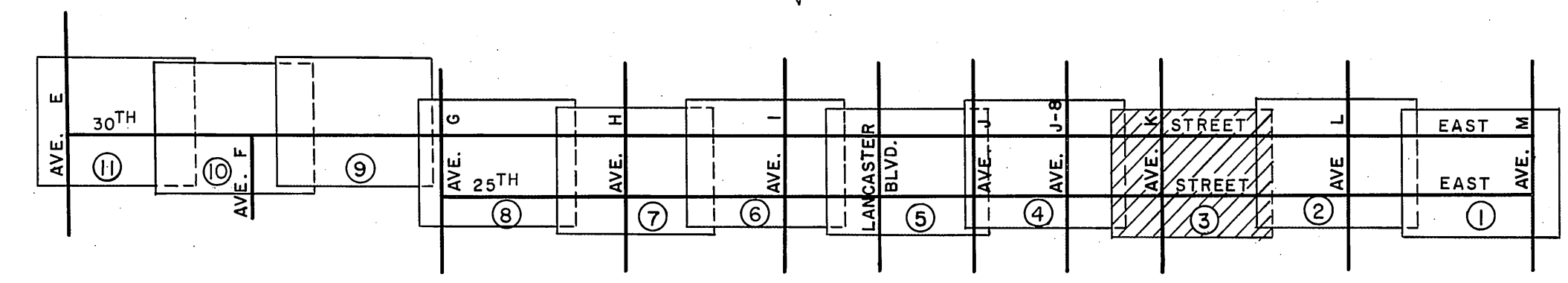
SECTION 29

T. 7 N., R. 11 W.

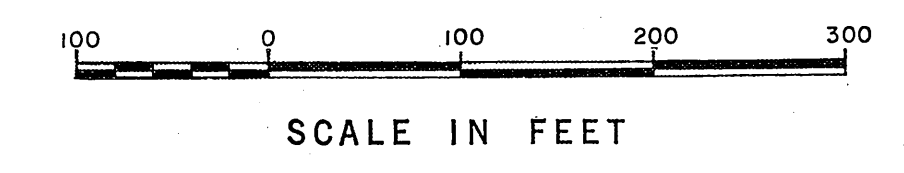
T. 7 N., R. 11 W.



REVISIONS:
 ① Cadastral Data Revised.



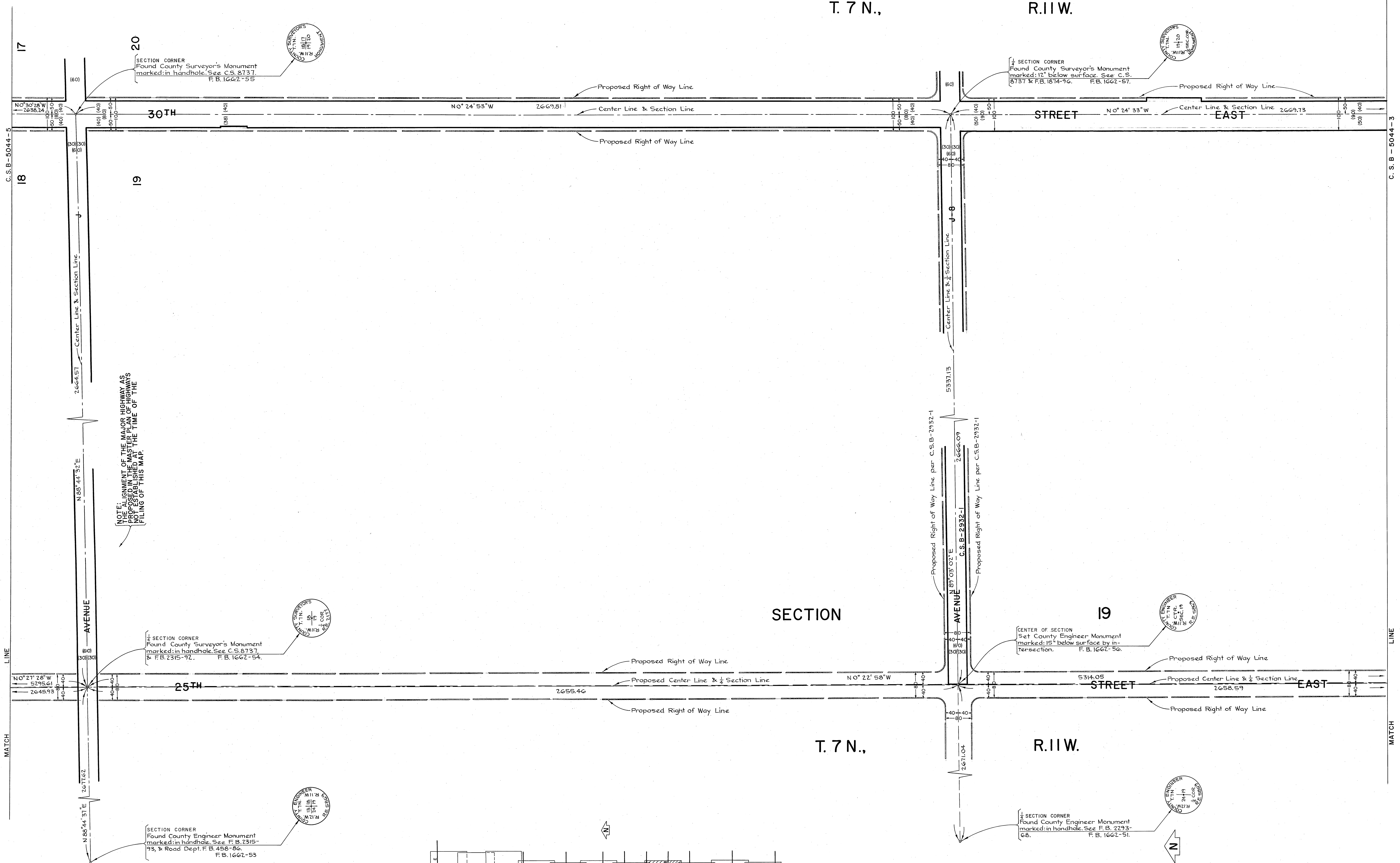
VICINITY MAP NOT TO SCALE



COUNTY OF LOS ANGELES DEPARTMENT OF COUNTY ENGINEER JOHN A. LAMBE, COUNTY ENGINEER PREPARED BY SURVEY DIVISION C. E. BRUNTY, DIVISION ENGINEER SURVEYED BY J. MENDONÇA CHECKED BY R. S. HILARIO DRAWN BY R. R. SHEAN	ALIGNMENT MAP OF 25TH STREET EAST FROM AVENUE M TO AVENUE G AND 30TH STREET EAST FROM AVENUE M TO AVENUE E BASIS OF BEARINGS CALIFORNIA COORDINATE SYSTEM ZONE 7		COUNTY SURVEYOR'S MAP NO. B-5044 SHEET 3 OF 11 SHEETS FILED <i>6-19-63</i> SURVEYED FEB.-AUG., 1967 REFERENCE F. B. 1662-131-193 JOB NUMBER 0075.41, 0075.32 INDEX MAP NO. 70	REVISION NO. BY DATE ① A.M. 1-19-78

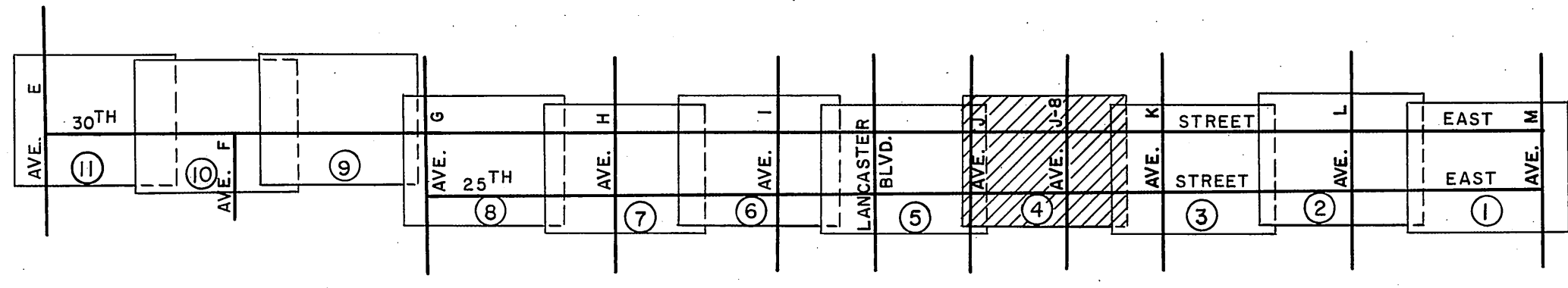
SECTION 20

T. 7 N., R. 11 W.

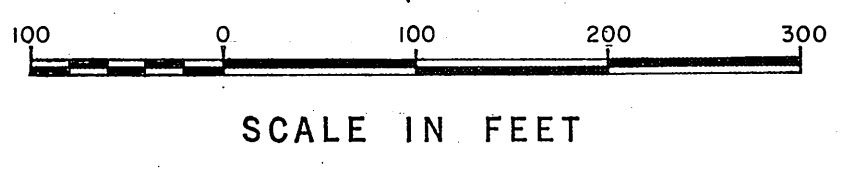


NOTE: THE ALIGNMENT OF THE MAJOR HIGHWAY AS SHOWN ON THIS MAP IS THE MASTER PLAN OF HIGHWAYS NOT ESTABLISHED AT THE TIME OF THE FILING OF THIS MAP.

REVISIONS:
 ① Cadastral Data Revised.



VICINITY MAP
 NOT TO SCALE



COUNTY OF LOS ANGELES DEPARTMENT OF COUNTY ENGINEER JOHN A. LAMBIE - COUNTY ENGINEER PREPARED BY SURVEY DIVISION C. E. BRUNTY - DIVISION ENGINEER SURVEYED BY J. MENDONCA CHECKED BY R. S. HILARIO DRAWN BY R. R. SHEAN	ALIGNMENT MAP OF 25TH STREET EAST FROM AVENUE M TO AVENUE G AND 30TH STREET EAST FROM AVENUE M TO AVENUE E BASIS OF BEARINGS CALIFORNIA COORDINATE SYSTEM ZONE 7		COUNTY SURVEYOR'S MAP NO. B-5044 SHEET 4 OF 11 SHEETS FILED: <i>6-15</i> , 19 <i>67</i> DEPUTY <i>Samuel J. Mendonca</i> SURVEYED FEB. - AUG., 1967 REFERENCE F. B. 1662-131-193	REVISION NO. BY DATE ① A.M. 1-19-78
			JOB NUMBER 0075.41, 0075.32	INDEX MAP NO. 70

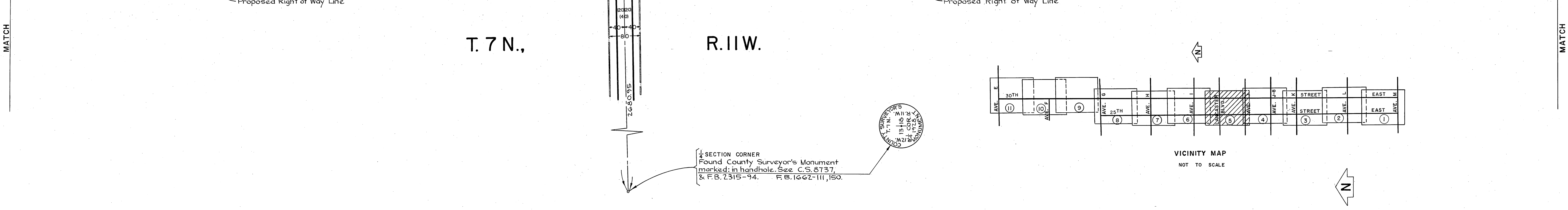
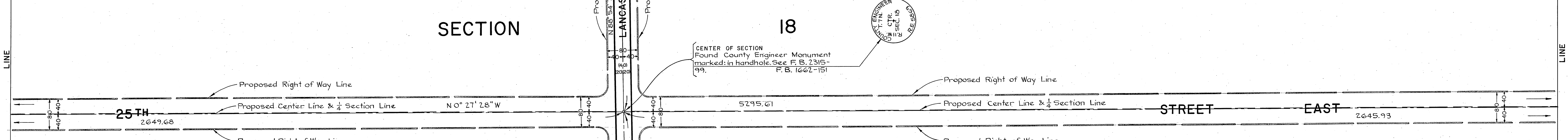
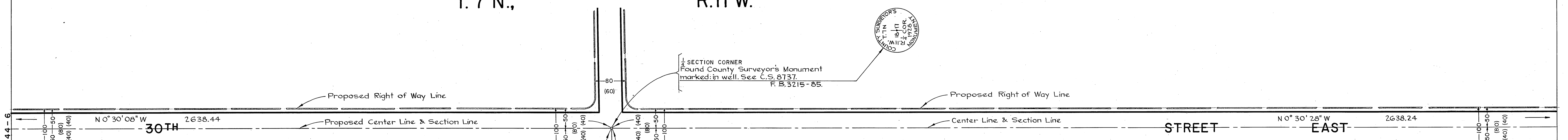
C.2.B-2044-2

SECTION

17

T. 7 N.,

R. 11 W.



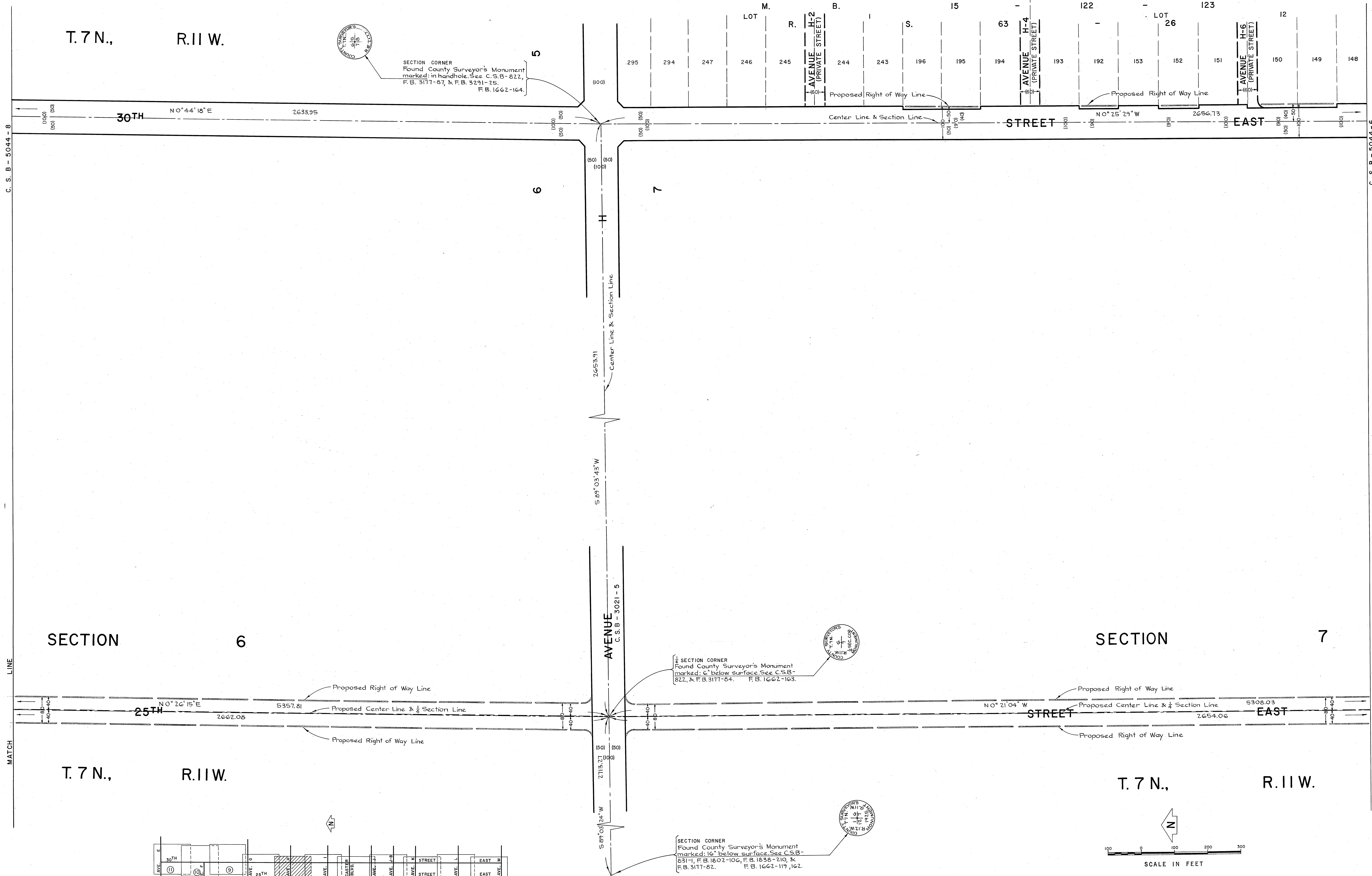
COUNTY OF LOS ANGELES DEPARTMENT OF COUNTY ENGINEER JOHN A. LAMBIE - COUNTY ENGINEER PREPARED BY SURVEY DIVISION C. E. BRUNTY - DIVISION ENGINEER SURVEYED BY J. MENDONCA CHECKED BY R. S. HILARIO DRAWN BY R. R. SHEAN	ALIGNMENT MAP OF 25TH STREET EAST FROM AVENUE M TO AVENUE G AND 30TH STREET EAST FROM AVENUE M TO AVENUE E BASIS OF BEARINGS CALIFORNIA COORDINATE SYSTEM ZONE 7		COUNTY SURVEYOR'S MAP NO. B-5044 SHEET 5 OF 11 SHEETS FILED: <i>B-13</i> , 19 <i>63</i> <i>George J. Brantly</i> DEPUTY SURVEYOR FEB.-AUG., 1967 REFERENCE F. B. 1662-131-193	REVISION NO. BY DATE
	JOB NUMBER 0075.41, 0075.32		INDEX MAP NO. 70	

C.2.B-2044-2

T-4402-B.2.C

SECTION 5
T.7 N., R.11 W.

MEADOW SPRINGS RANCH TRACT

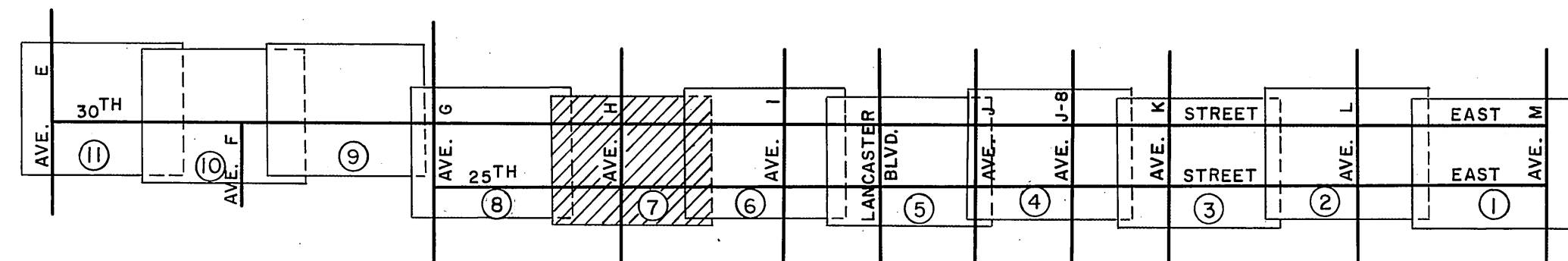


C. S. B. - 5044 - 8

C. S. B. - 5044 - 6

SECTION 6
T.7 N., R.11 W.

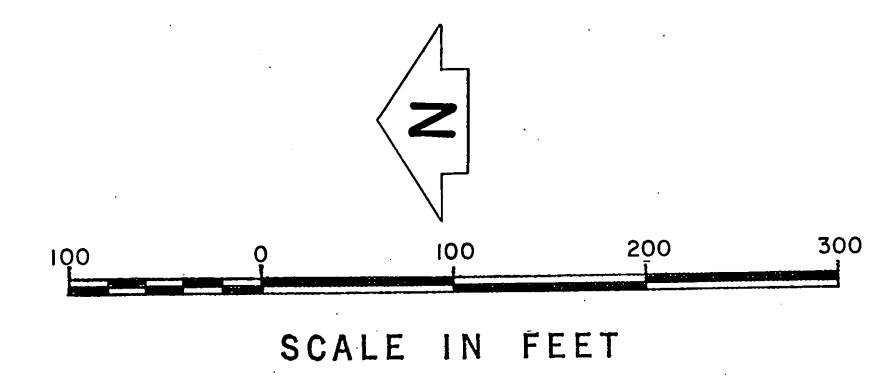
SECTION 7
T.7 N., R.11 W.



VICINITY MAP
NOT TO SCALE

SECTION CORNER
Found County Surveyor's Monument
marked 1/4" below surface. See C.S.B.
822, & F.B. 3177-84. F.B. 1662-163.

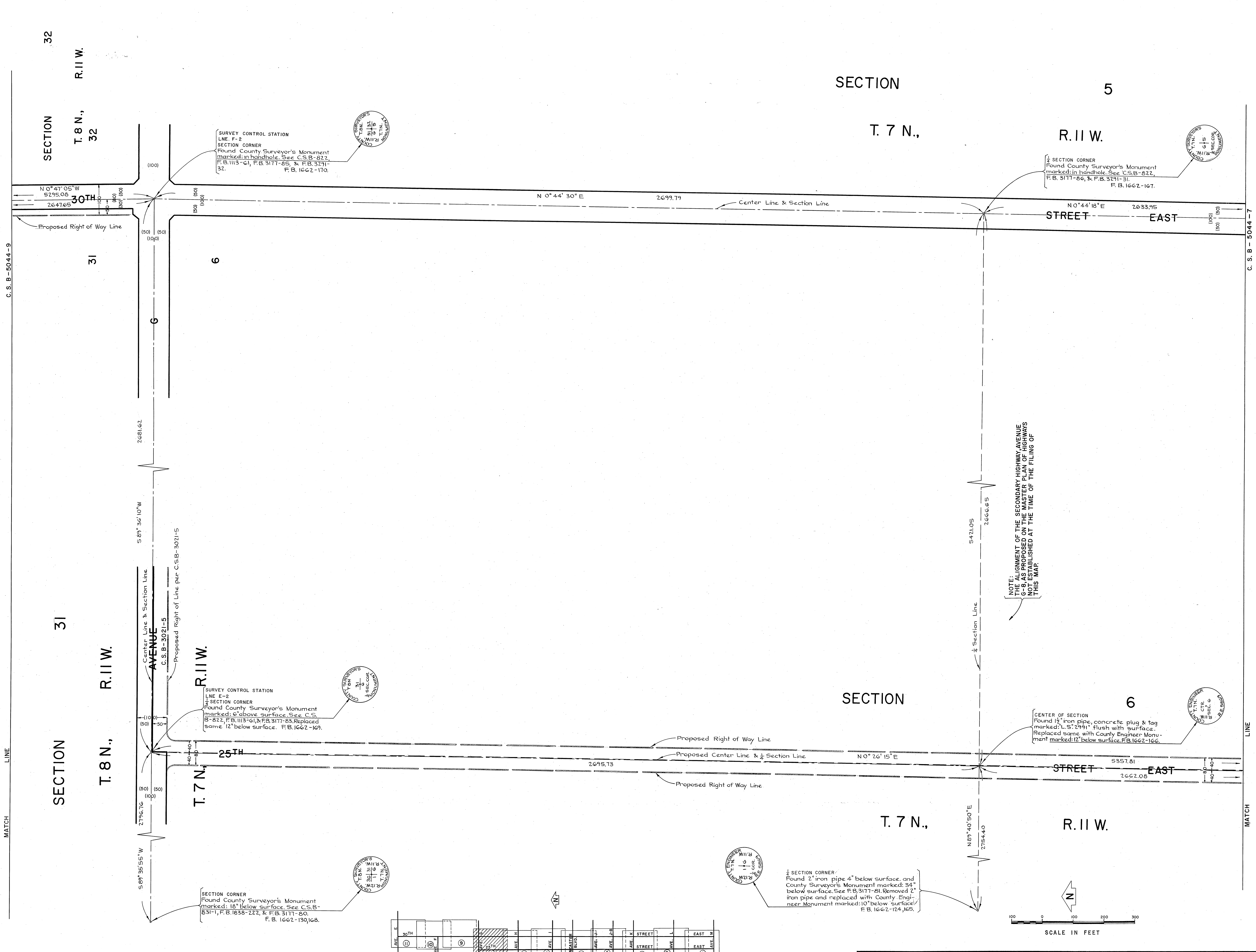
SECTION CORNER
Found County Surveyor's Monument
marked 1/4" below surface. See C.S.B.
831-1, F.B. 1602-106, F.B. 1638-210, &
F.B. 3177-82. F.B. 1662-119, 162.



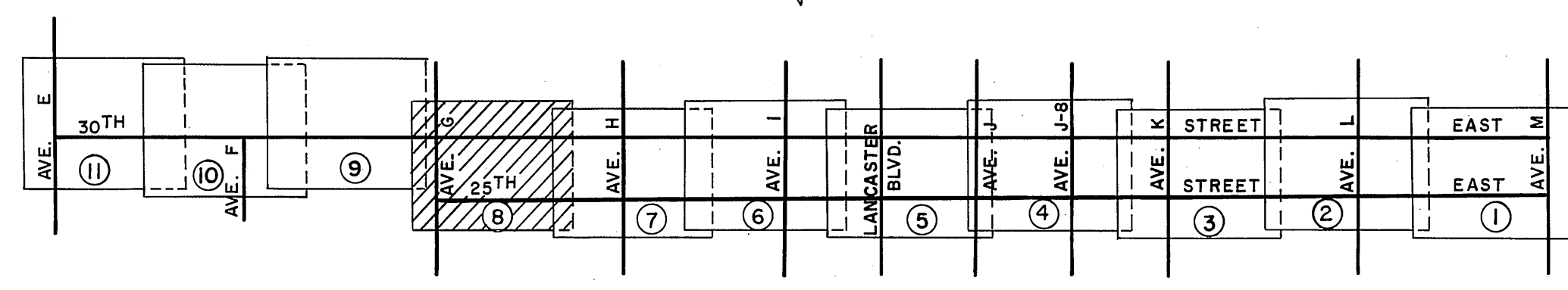
Rev.

COUNTY OF LOS ANGELES DEPARTMENT OF COUNTY ENGINEER JOHN A. LAMBIE - COUNTY ENGINEER PREPARED BY SURVEY DIVISION C. E. BRUNTY - DIVISION ENGINEER SURVEYED BY - J. MENDONCA CHECKED BY - R. G. HILARIO DRAWN BY - R. R. SHEAN	ALIGNMENT MAP OF 25TH STREET EAST FROM AVENUE M TO AVENUE G AND 30TH STREET EAST FROM AVENUE M TO AVENUE E BASES OF BEARINGS CALIFORNIA COORDINATE SYSTEM ZONE 7		COUNTY SURVEYOR'S MAP NO. B-5044 SHEET 7 OF 11 SHEETS FILED <i>6/29</i> , 1962 <i>Seay J. Chasman</i> DEPUTY SURVEYOR FEB. - AUG., 1967 REFERENCE F. B. 1662-131-193 JOB NUMBER 0075.41, 0075.32 INDEX MAP NO. 70	REVISION NO. BY DATE 1 AM 1/27/72
--	---	--	---	---

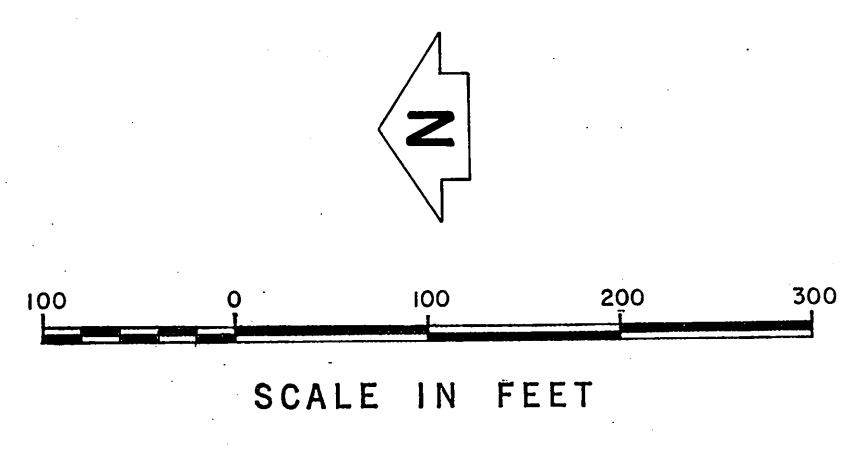
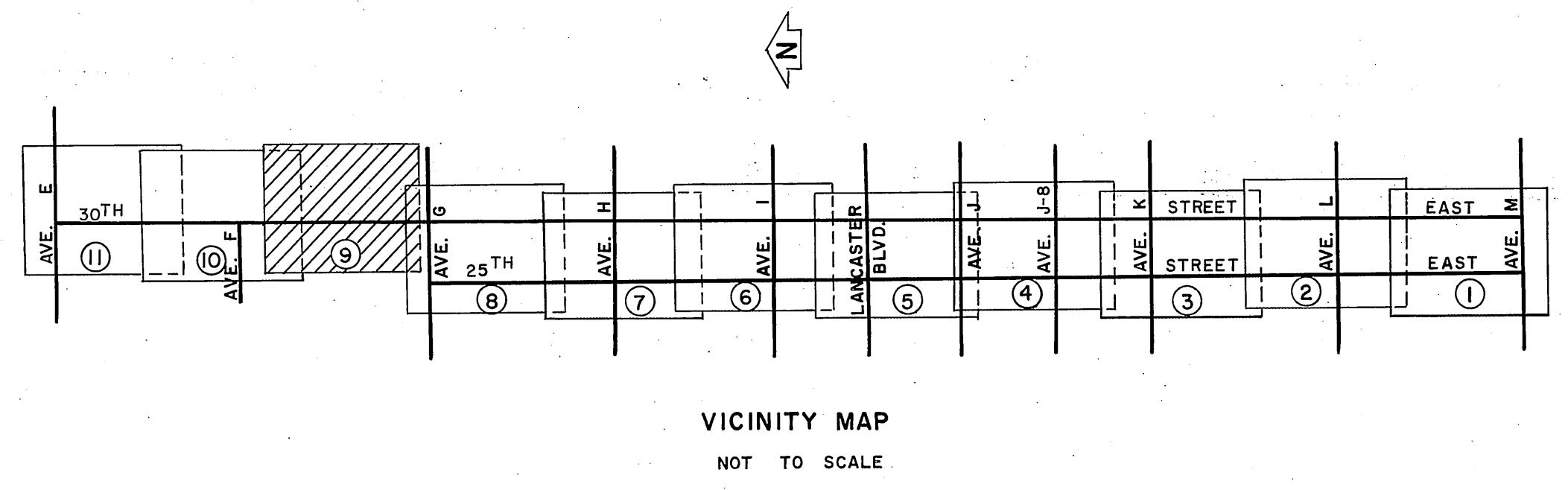
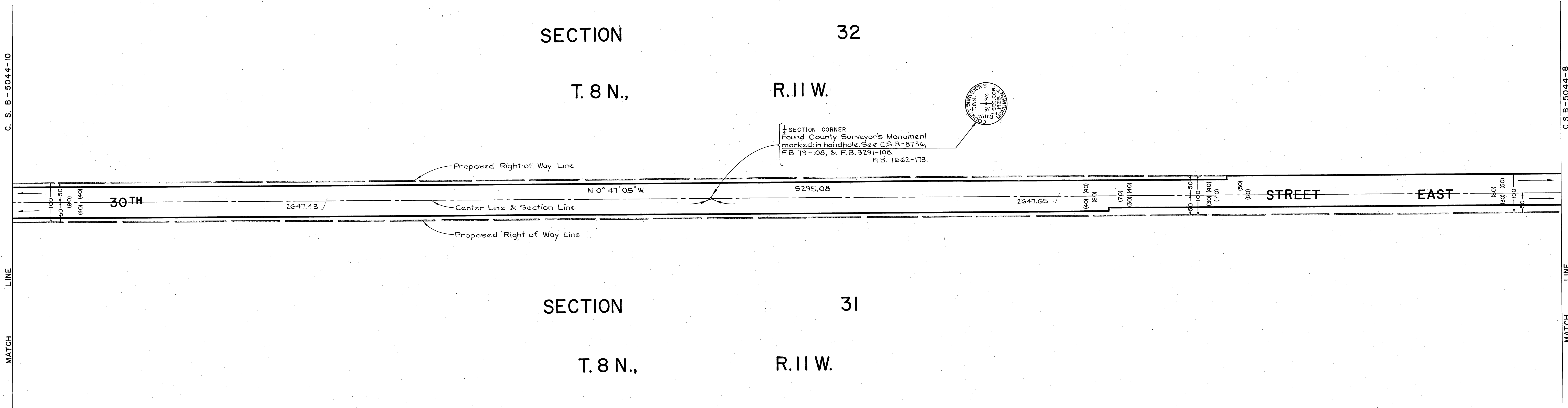
C.S.B.-2044-1



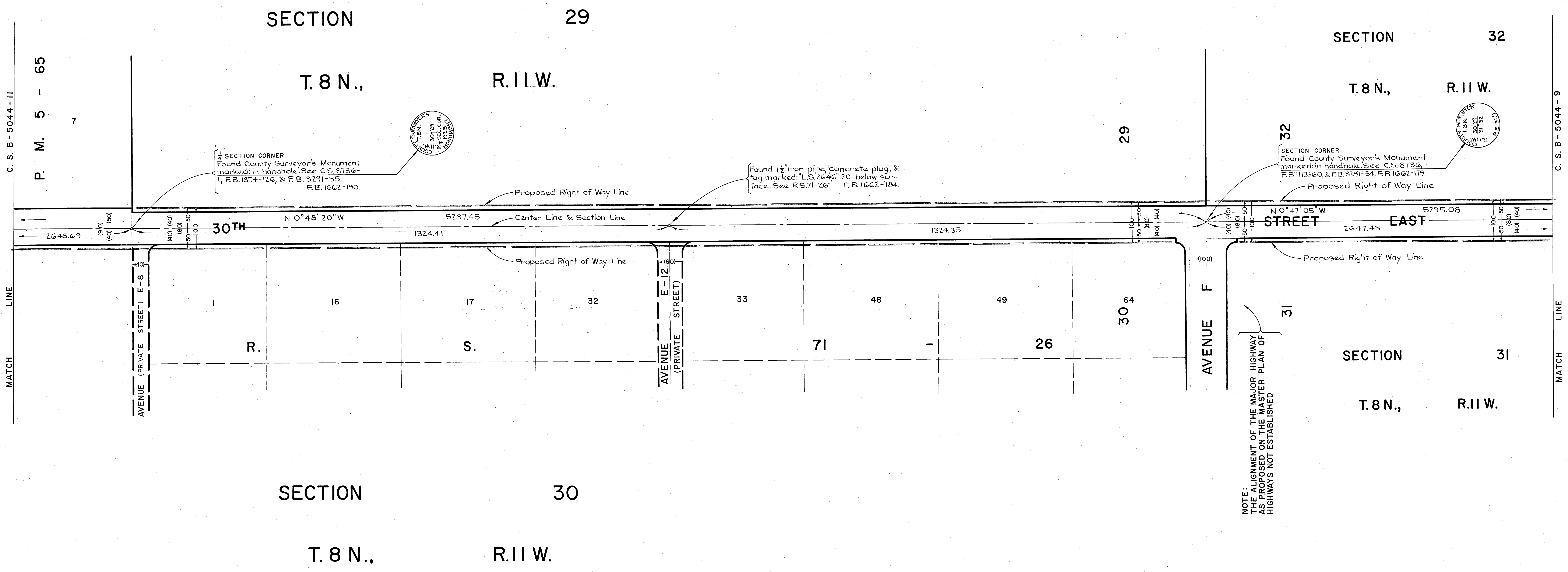
NOTE: THE ALIGNMENT OF THE SECONDARY HIGHWAY AVENUE G-B, AS PROPOSED ON THE MASTER PLAN OF HIGHWAYS NOT ESTABLISHED AT THE TIME OF THE FILING OF THIS MAP.



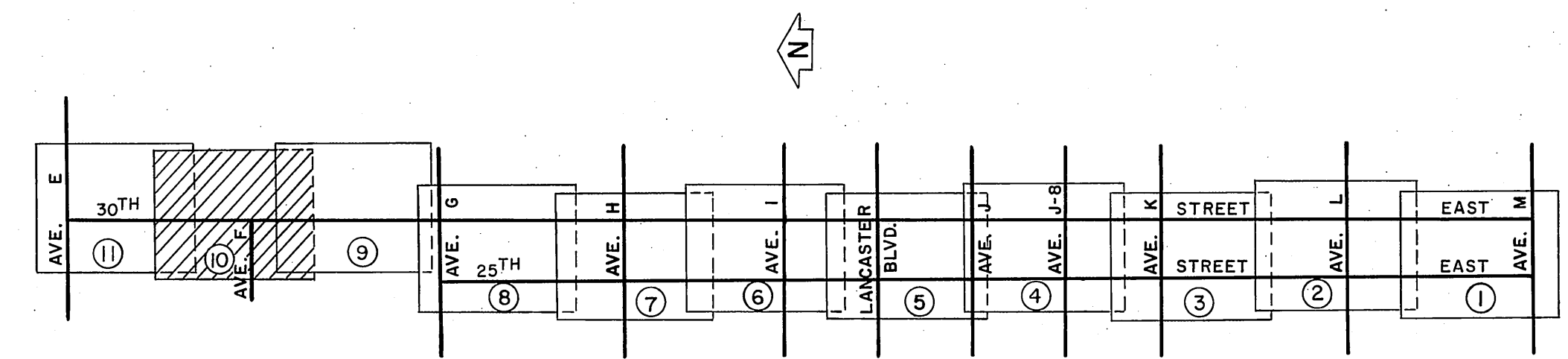
COUNTY OF LOS ANGELES DEPARTMENT OF COUNTY ENGINEER JOHN A. LAMBIE - COUNTY ENGINEER PREPARED BY SURVEY DIVISION C. E. BRUNTY - DIVISION ENGINEER SURVEYED BY - J. MENDONCA CHECKED BY - R. G. HILARIO DRAWN BY - R. R. SHEAN	ALIGNMENT MAP OF 25TH STREET EAST FROM AVENUE M TO AVENUE G AND 30TH STREET EAST FROM AVENUE M TO AVENUE E BASIS OF BEARINGS CALIFORNIA COORDINATE SYSTEM ZONE 7		COUNTY SURVEYOR'S MAP NO. B-5044 SHEET 8 OF 11 SHEETS FILED <i>6/19/62</i> 1962 <i>George J. Mendonca</i> DEPUTY SURVEYED FEB - AUG., 1967 REFERENCE F. B. 1662-131-193 JOB NUMBER 0075.41, 0075.32	REVISION NO. BY DATE



COUNTY OF LOS ANGELES DEPARTMENT OF COUNTY ENGINEER JOHN A. LAMBIE, COUNTY ENGINEER PREPARED BY SURVEY DIVISION C. E. BRUNTY, DIVISION ENGINEER SURVEYED BY <u>J. MENDONCA</u> CHECKED BY <u>R. G. HILARIO</u> DRAWN BY <u>R. R. SHEAN</u>	ALIGNMENT MAP OF		COUNTY SURVEYOR'S MAP NO.	
	30TH STREET EAST		B-5044	
	FROM AVENUE M TO AVENUE E		SHEET 9 OF 11 SHEETS	
	BASIS OF BEARINGS		FILED <u>6-19-68</u> 19 <u>68</u>	
	CALIFORNIA COORDINATE SYSTEM ZONE 7		SURVEYED FEB - AUG, 1967 REFERENCE F. B. 1662-131-193	
		JOB NUMBER 0075.32		INDEX MAP NO. 70
		NO.		REVISION
		BY		DATE

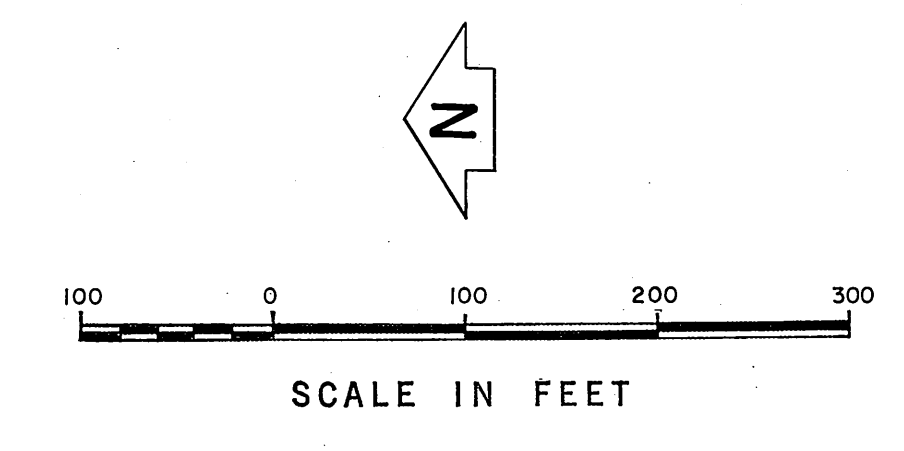


NOTE:
 THE ALIGNMENT OF THE MAJOR HIGHWAY
 AS PROPOSED ON THE MASTER PLAN OF
 HIGHWAYS NOT ESTABLISHED

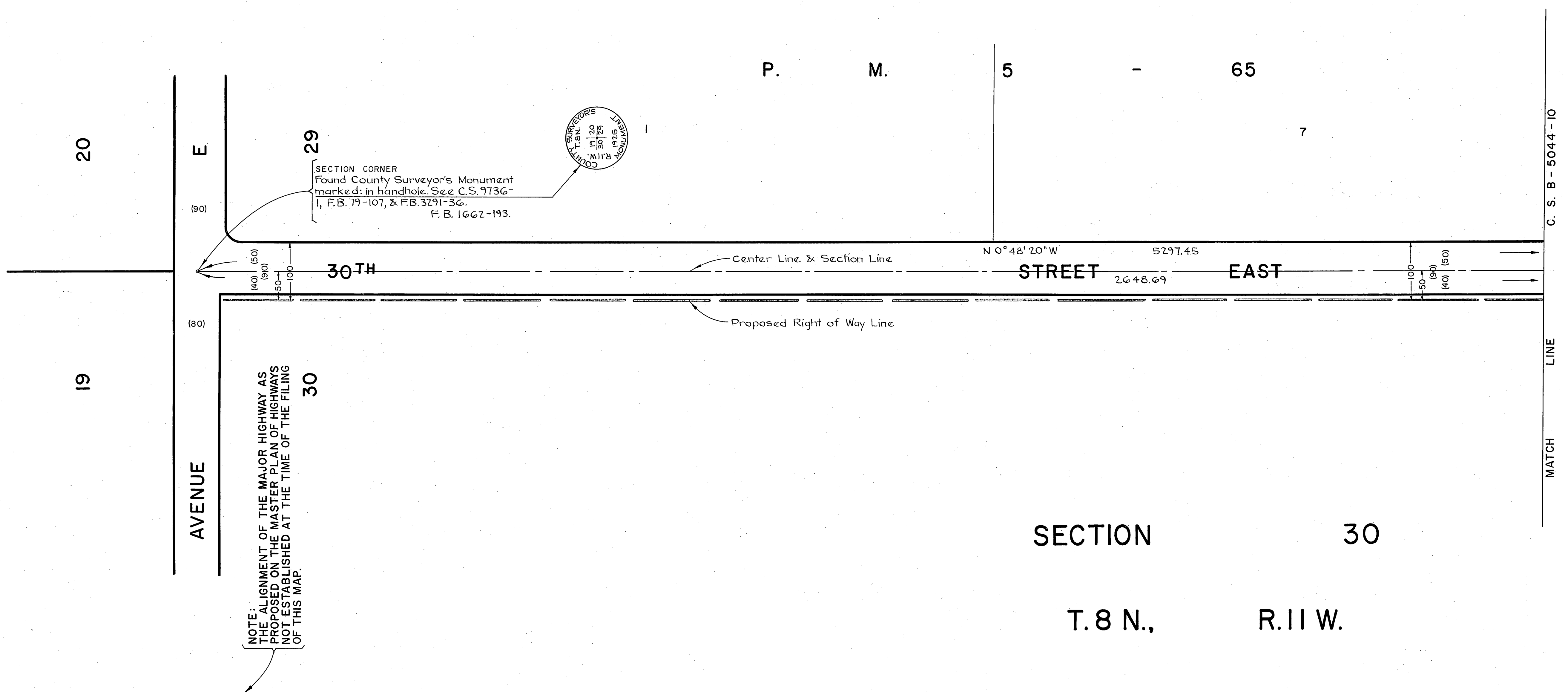


VICINITY MAP
 NOT TO SCALE

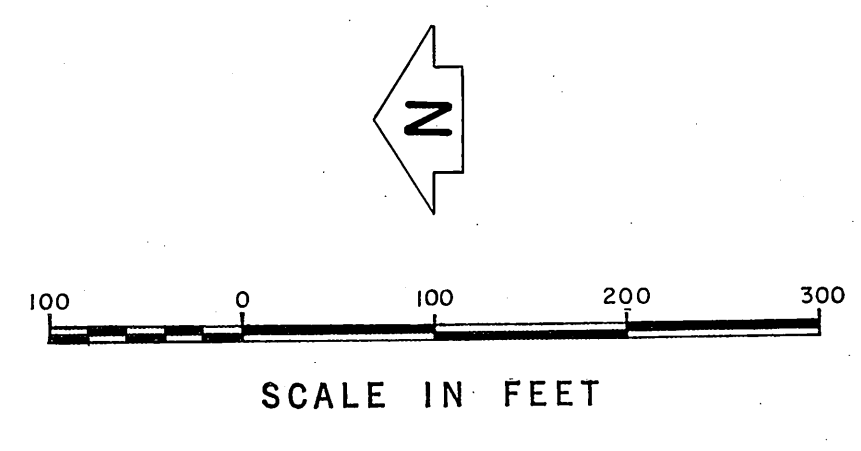
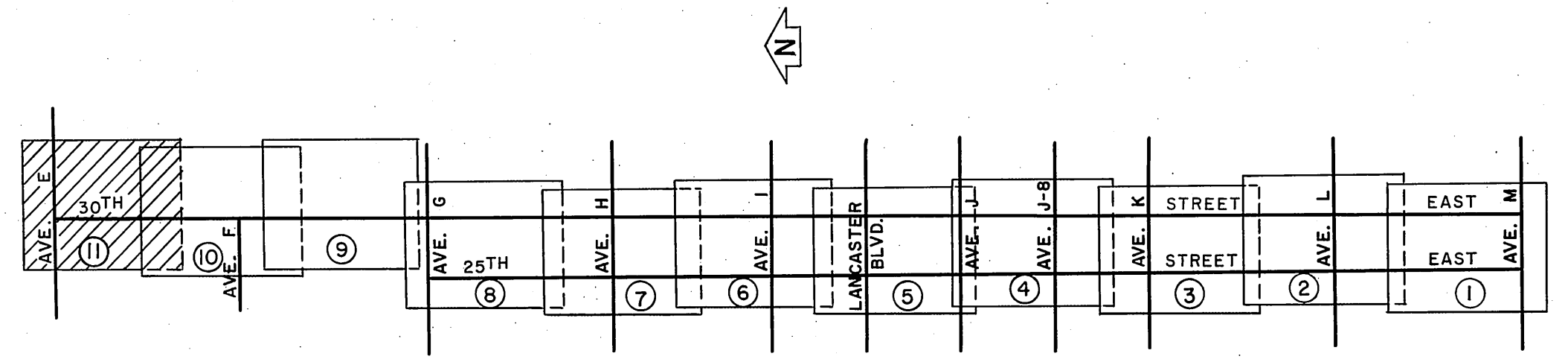
REVISIONS:
 ① Cadastral Data Revised.



COUNTY OF LOS ANGELES DEPARTMENT OF COUNTY ENGINEER JOHN A. LAMBIE - COUNTY ENGINEER PREPARED BY SURVEY DIVISION C. E. BRUNTY - DIVISION ENGINEER SURVEYED BY J. MENDONCA CHECKED BY R. G. HILARIO DRAWN BY R. P. SHEAN	ALIGNMENT MAP OF 30TH STREET EAST FROM AVENUE M TO AVENUE E BASIS OF BEARINGS CALIFORNIA COORDINATE SYSTEM ZONE 7		COUNTY SURVEYOR'S MAP NO. B-5044 SHEET 10 OF 11 SHEETS FILED: <i>6/12</i> , 19 <i>67</i> <i>Jerry D. Mendonca</i> SURVEYED FEB. - AUG., 1967 REFERENCE F. B. 1662-131-193 JOB NUMBER 0075-32	REVISION NO. BY DATE ① A.M. 1/20/78
--	---	--	---	---



NOTE: ALIGNMENT OF THE MAJOR HIGHWAY AS PROPOSED ON THE MASTER PLAN OF HIGHWAYS NOT ESTABLISHED AT THE TIME OF THE FILING OF THIS MAP.



COUNTY OF LOS ANGELES DEPARTMENT OF COUNTY ENGINEER JOHN A. LAMBIE - COUNTY ENGINEER PREPARED BY SURVEY DIVISION C. E. BRUNTY - DIVISION ENGINEER SURVEYED BY J. MENDONÇA CHECKED BY R. G. HILARIO DRAWN BY B. R. SHEAN	ALIGNMENT MAP OF 30TH STREET EAST FROM AVENUE M TO AVENUE E BASIS OF BEARINGS CALIFORNIA COORDINATE SYSTEM ZONE 7		COUNTY SURVEYOR'S MAP NO. B-5044 SHEET 11 OF 11 SHEETS FILED <i>[Signature]</i> 19 69 SURVEYED FEB - AUG., 1967 REFERENCE F. B. 1662-131-193	REVISION NO. BY DATE
			JOB NUMBER 0075.32	INDEX MAP NO. 70