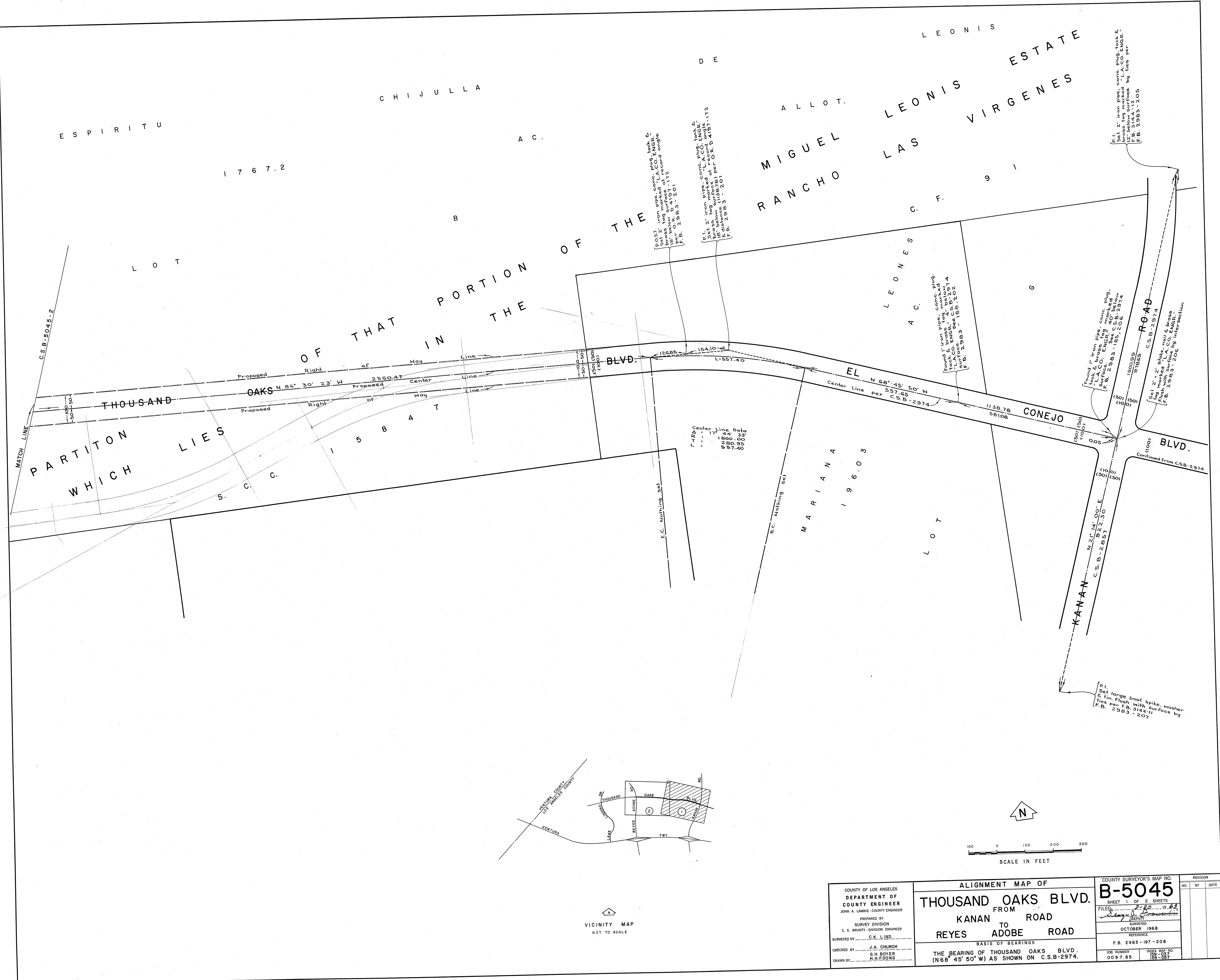


C.S.B-2042-1



Post iron pipe, conc. plug, mark & brass tag marked L.A. CO. ENGR. 18' below surface at record angle per O.R. D. 4191-112 F.B. 2983-201

Set 2" iron pipe, conc. plug, ENGR. mark & brass tag marked L.A. CO. ENGR. 12' below surface per O.R. D. 4191-112 F.B. 2983-201

Found 1" iron pipe, conc. plug, mark & brass tag marked L.A. CO. ENGR. 12' below surface per O.R. D. 4191-112 F.B. 2983-201

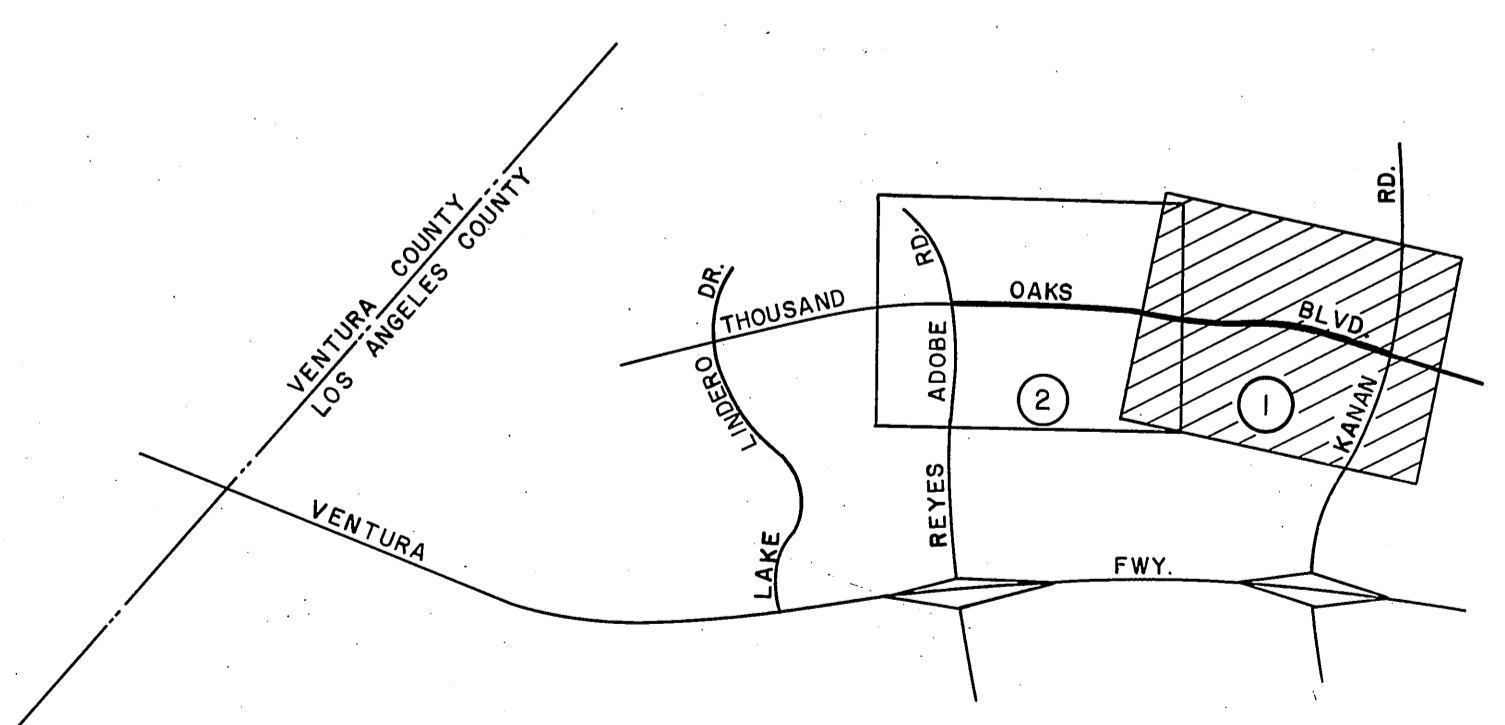
Found 1" iron pipe, conc. plug, mark & brass tag marked L.A. CO. ENGR. 12' below surface per O.R. D. 4191-112 F.B. 2983-201

Set 2" iron pipe, conc. plug, mark & brass tag marked L.A. CO. ENGR. 12' below surface by this per F.B. 2983-205

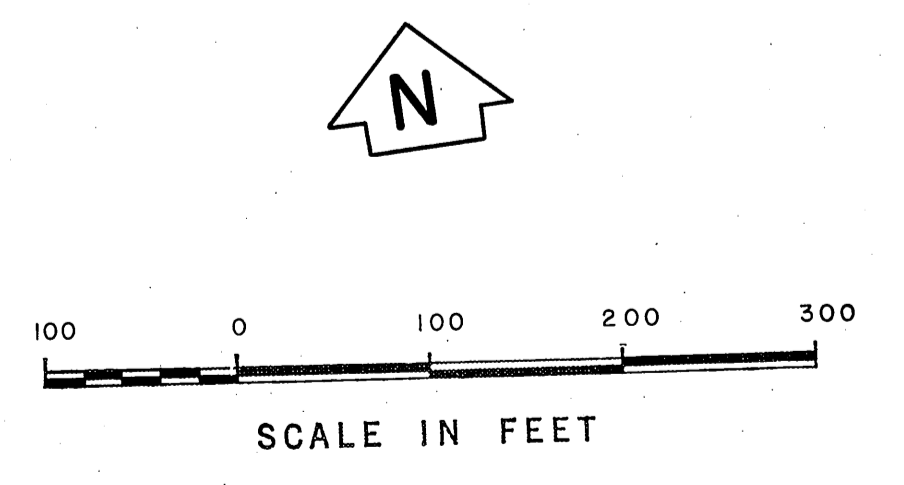
Set 2" x 2" stake, nail & brass tag marked L.A. CO. ENGR. 12' below surface by intersection F.B. 2983-206

Set large bolt spike, washer & tin flush with surface by this per F.B. 3144-1 F.B. 2983-207

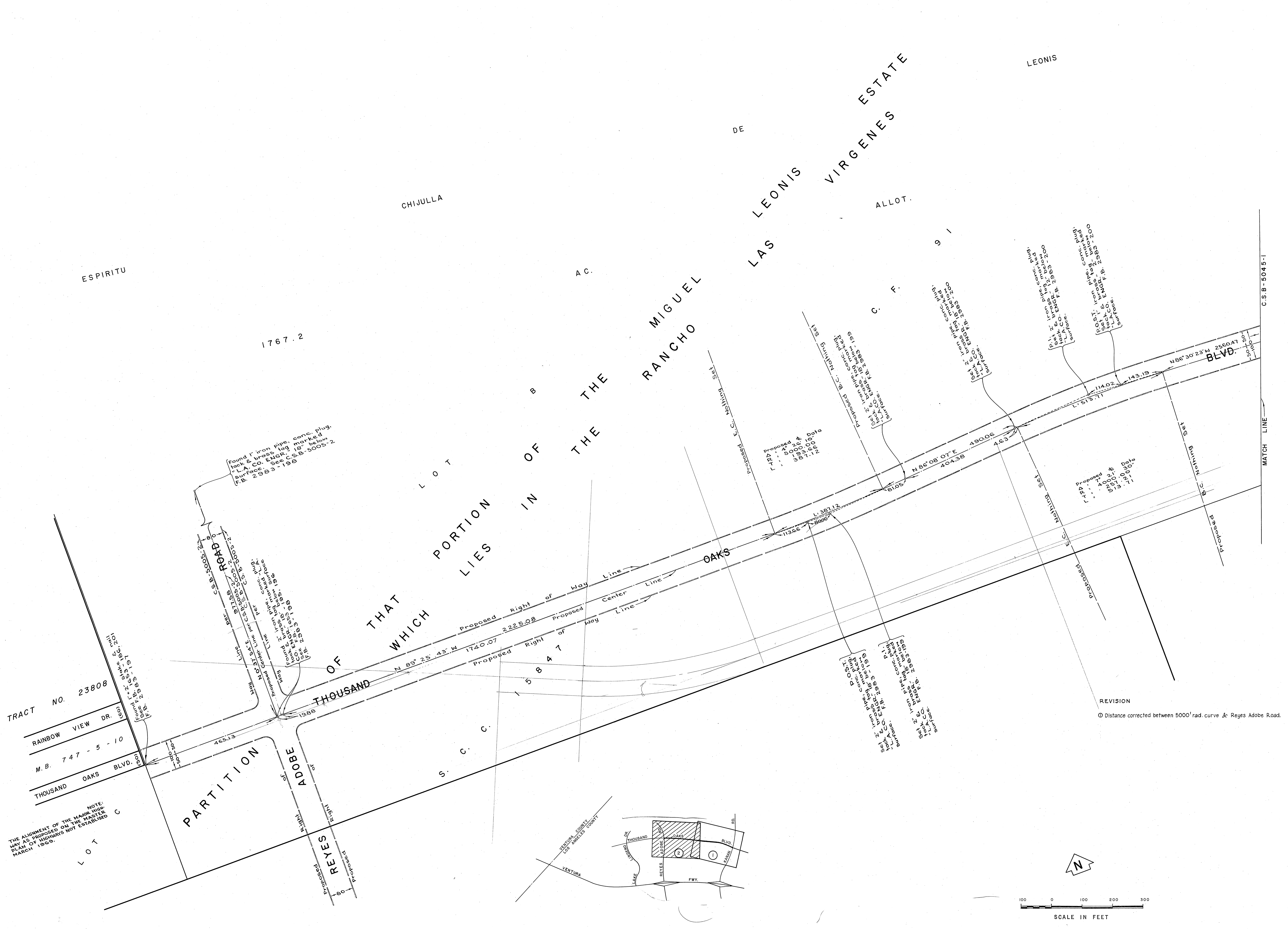
Center Line Data
 F.T.R.A.
 177.44
 1800.00
 5280.95
 97.46



VICINITY MAP
NOT TO SCALE



COUNTY OF LOS ANGELES DEPARTMENT OF COUNTY ENGINEER JOHN A. LAMBIE - COUNTY ENGINEER PREPARED BY SURVEY DIVISION C. E. BRUNTY - DIVISION ENGINEER CHECKED BY J.A. CHURCH G.H. BOYER DRAWN BY M.H. FODDLES	ALIGNMENT MAP OF THOUSAND OAKS BLVD. FROM KANAN ROAD TO REYES ADOBE ROAD		COUNTY SURVEYOR'S MAP NO. B-5045 SHEET 1 OF 2 SHEETS FILED 3-20-1968 SURVEYED OCTOBER 1968 REFERENCE F.B. 2983-197-208	REVISION NO. BY DATE
	BASIS OF BEARINGS THE BEARING OF THOUSAND OAKS BLVD. (N68°45'50" W) AS SHOWN ON C.S.B-2974.		JOB NUMBER 0097.85	INDEX MAP NO. 189-037 189-037
			CONTINUED FROM C.S.B-2974	



TRACT NO. 23808
 RAINBOW VIEW DR.
 M.B. 747-5-10
 THOUSAND OAKS BLVD.

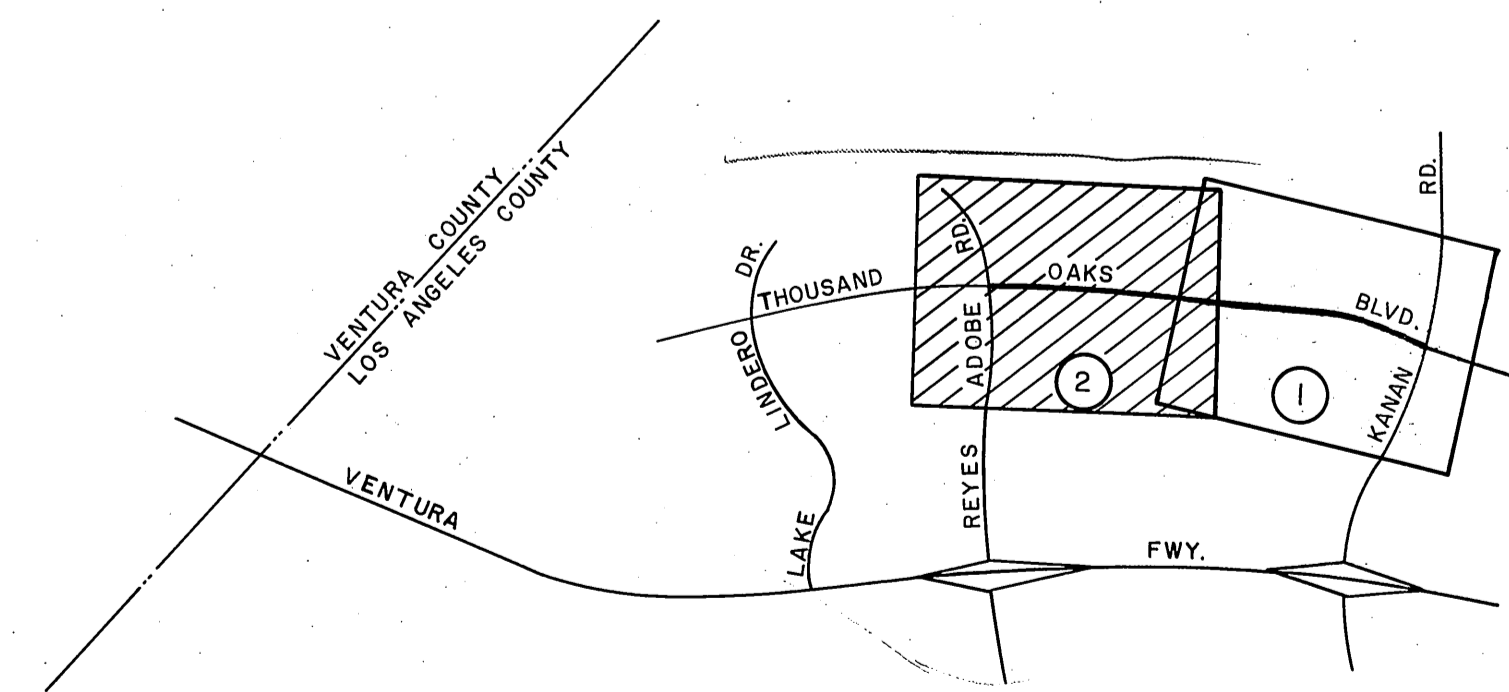
NOTE:
 THE ALIGNMENT OF THE MAJOR HIGHWAY AS PROPOSED ON THE MASTER PLAN OF HIGHWAYS NOT ESTABLISHED MARCH 1969.

PARTITION OF REYES ADOBE ROAD

THOUSAND OAKS

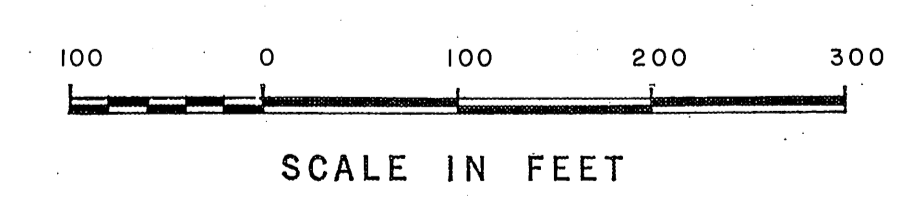
OF THAT PORTION WHICH LIES IN THE

THE MIGUEL RANCHO LAS LEONIS VIRGENES ESTATE



VICINITY MAP
 NOT TO SCALE

REVISION
 Distance corrected between 5000' rad. curve & Reyes Adobe Road.



COUNTY OF LOS ANGELES DEPARTMENT OF COUNTY ENGINEER JOHN A. LAMMIE COUNTY ENGINEER PREPARED BY SURVEY DIVISION C. E. BRUNTY-DIVISION ENGINEER SURVEYED BY C.K. LIND CHECKED BY J.A. CHURCH G.H. BOYER H.H. FONG DRAWN BY	ALIGNMENT MAP OF THOUSAND OAKS BLVD. FROM KANAN ROAD TO REYES ADOBE ROAD		COUNTY SURVEYOR'S MAP NO. B-5045 SHEET 2 OF 2 SHEETS FILED: 3-20-69 <i>George J. Brumby</i> SURVEYED OCTOBER 1968 REFERENCE F.B. 2983-197-208 JOB NUMBER 0097.85 INDEX MAP NO. 158-037 158-057	REVISION <table border="1"> <tr> <th>NO.</th> <th>BY</th> <th>DATE</th> </tr> <tr> <td>1</td> <td>G.H.B.</td> <td>11/25/69</td> </tr> </table>	NO.	BY	DATE	1	G.H.B.	11/25/69
	NO.	BY	DATE							
	1	G.H.B.	11/25/69							
	BASIS OF BEARINGS THE BEARING OF THOUSAND OAKS BLVD. (N68° 45' 50" W) AS SHOWN ON C.S.B-2974.									
			MATCH LINE C.S.B-5045-1							