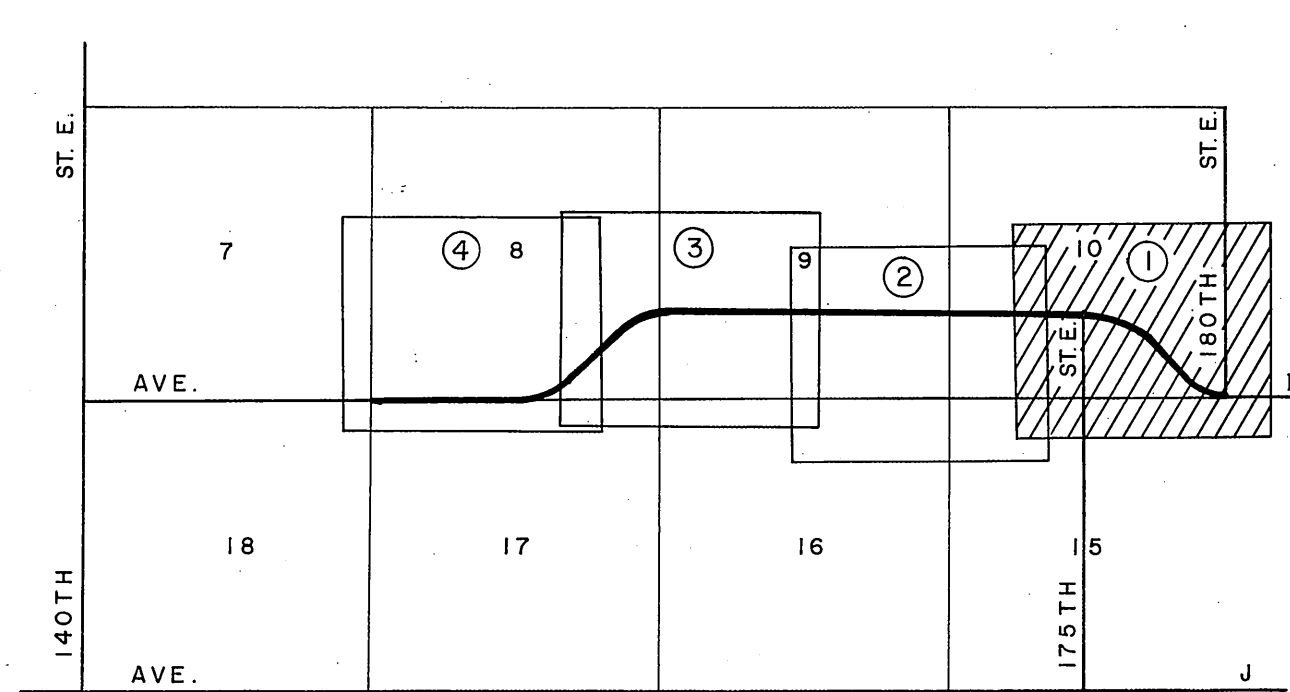


SECTION 10

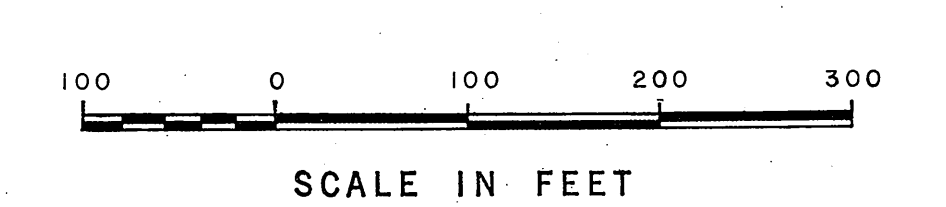
SECTION 15

T. 7 N., R. 9 W.

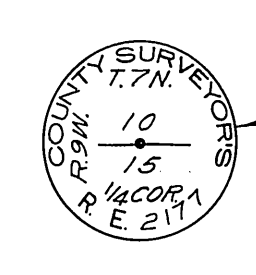
REVISIONS:
 (1) Cadastral Data Revised.



VICINITY MAP
 NOT TO SCALE



NOTE:
 THE ALIGNMENT OF THE MAJOR
 HIGHWAY AS PROPOSED ON THE MASTER
 PLAN OF HIGHWAYS NOT ESTABLISHED
 APRIL 1969.

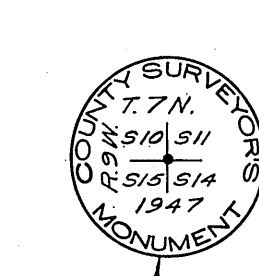


1/4 SECTION CORNER
 Found County Surveyor's Mon-
 ument marked; flush with
 surface. See F. B. 2237-106
 & C. S. B-2658,
 F. B. 3182-2794

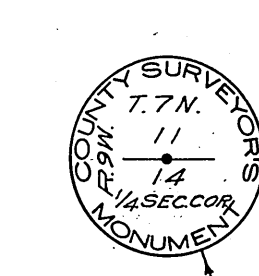
Set 2" iron pipe, conc plug,
 tack & brass tag marked;
 L.A. CO. ENGR. 12" below
 surface. F. B. 3182-94

Set 2" iron pipe, conc plug,
 tack & brass tag marked;
 L.A. CO. ENGR. 12" below
 surface. F. B. 3182-99

Proposed P. I.
 Set 2" iron pipe, conc plug,
 tack & brass tag marked;
 L.A. CO. ENGR. 12" below
 surface. F. B. 3182-107



SECTION CORNER
 Found County Surveyor's Mon-
 ument marked; 10" below sur-
 face. See F. B. 410-215, F. B.
 2258-226, F. B. 3182-100



1/4 SECTION CORNER
 Found County Surveyor's Mon-
 ument marked; flush with sur-
 face. See F. B. 3187-718
 1000. See F. B. 3182-103

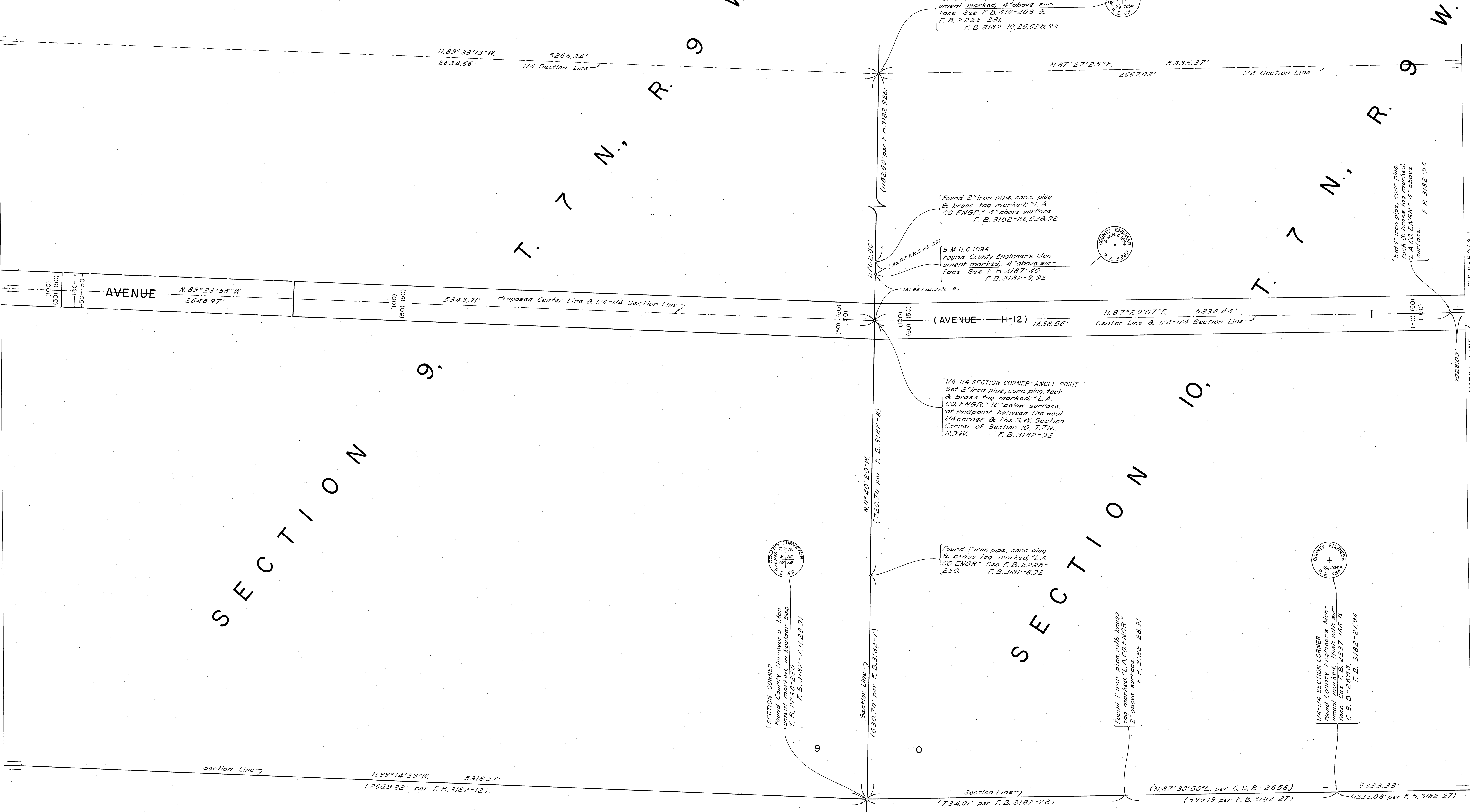
COUNTY OF LOS ANGELES
 DEPARTMENT OF
 COUNTY ENGINEER
 JOHN A. LAMBIE, COUNTY ENGINEER
 PREPARED BY
 SURVEY DIVISION
 C. E. BRUNY, DIVISION ENGINEER
 SURVEYED BY J. S. COATES
 CHECKED BY G. D. BAILEY
 H. HOLMAN
 DRAWN BY S. R. BRIONES

ALIGNMENT MAP OF
 AVENUE I
 FROM
 180TH STREET EAST
 TO
 SOUTHWEST CORNER OF
 SECTION 8, T. 7 N., R. 9 W.
 BASIS OF BEARINGS
 THE BEARING OF THE NORTH LINE OF THE
 N. W. 1/4 OF SECTION 15, T. 7 N., R. 9 W.,
 (N87°30'50"E) AS SHOWN ON C. S. B-2658

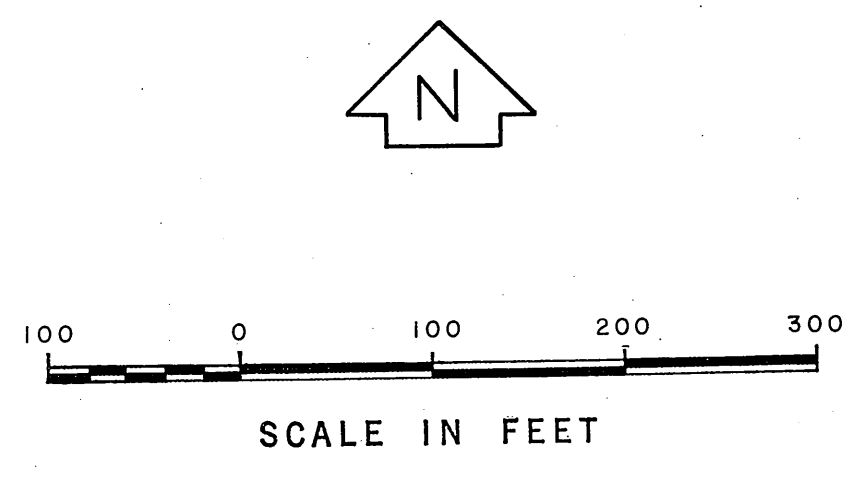
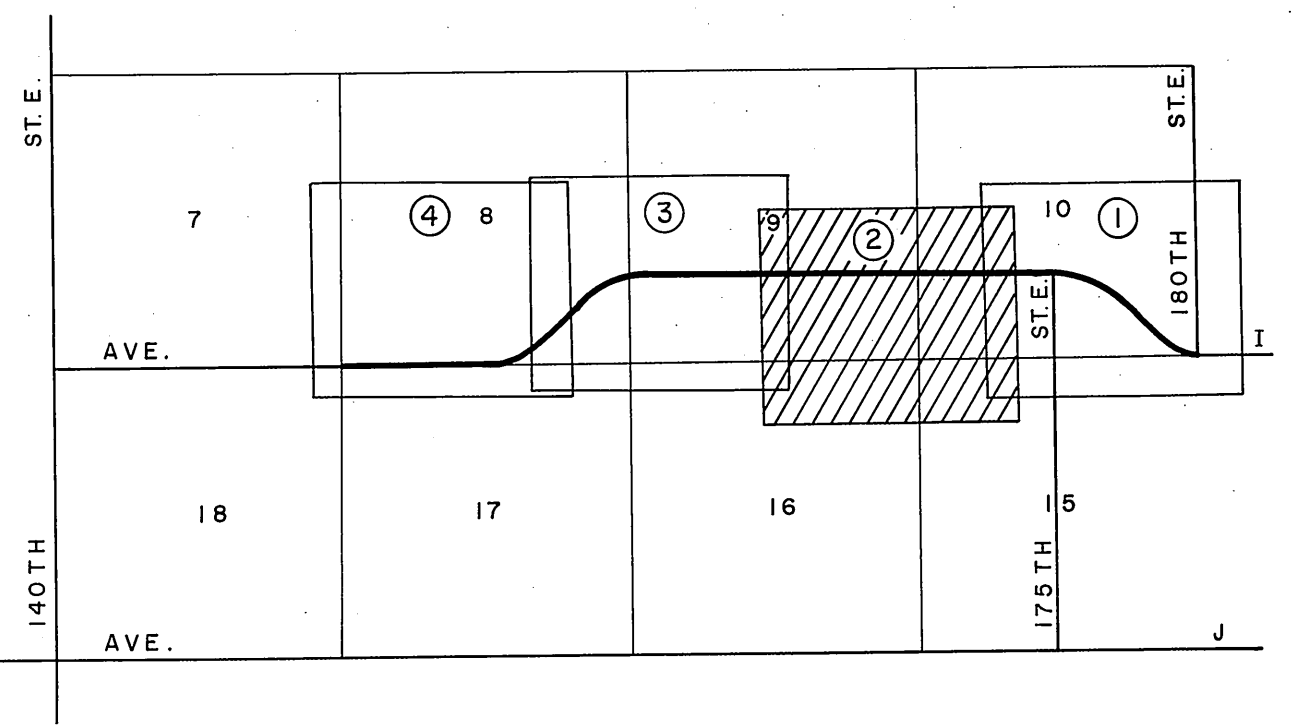
COUNTY SURVEYOR'S MAP NO. B-5046		REVISION	
SHEET 1 OF 4 SHEETS		NO.	DATE
FILED: _____, 1968		10	APR 1968
DECEMBER 1967 - APRIL 1968			
REFERENCE F. B. 3182-75-103			
JOB NUMBER 0075-98	INDEX MAP NO. 68 & 69		

MATCH LINE C.S.B.-5046-3

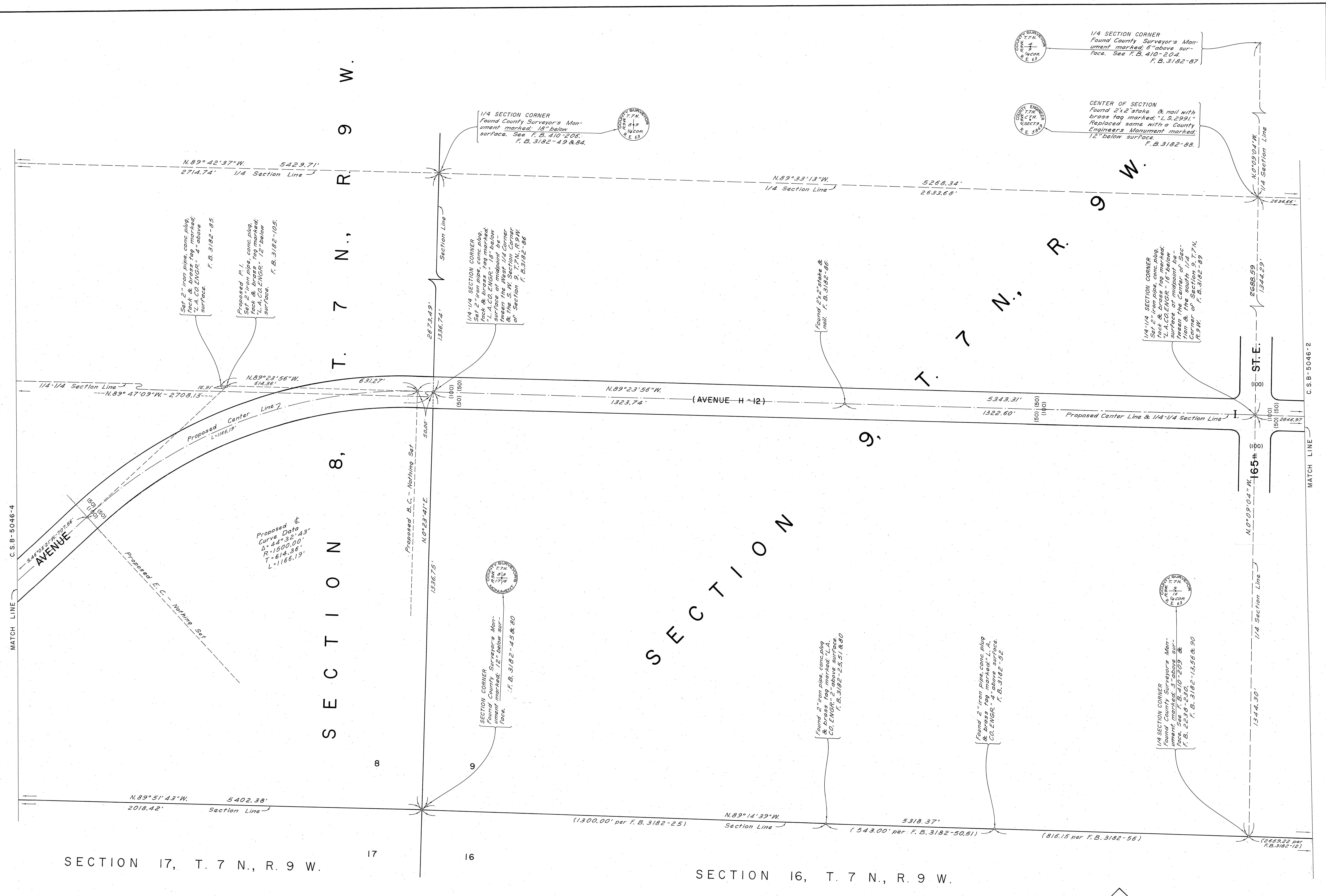
MATCH LINE C.S.B.-5046-1



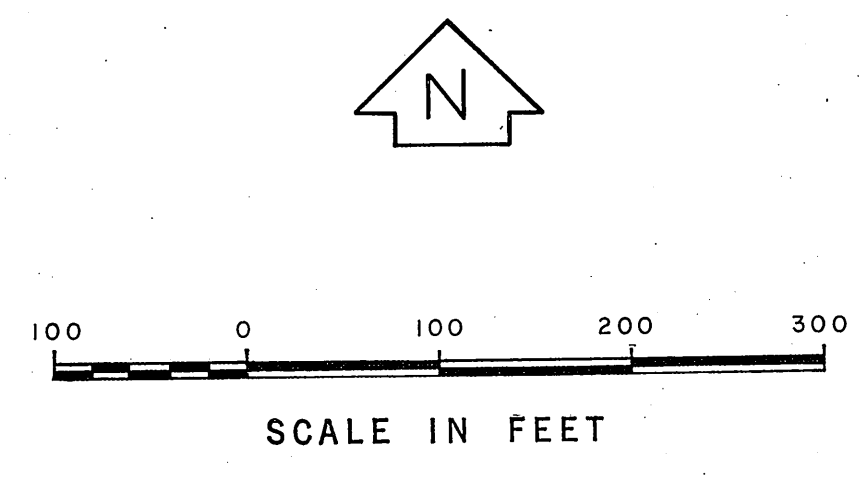
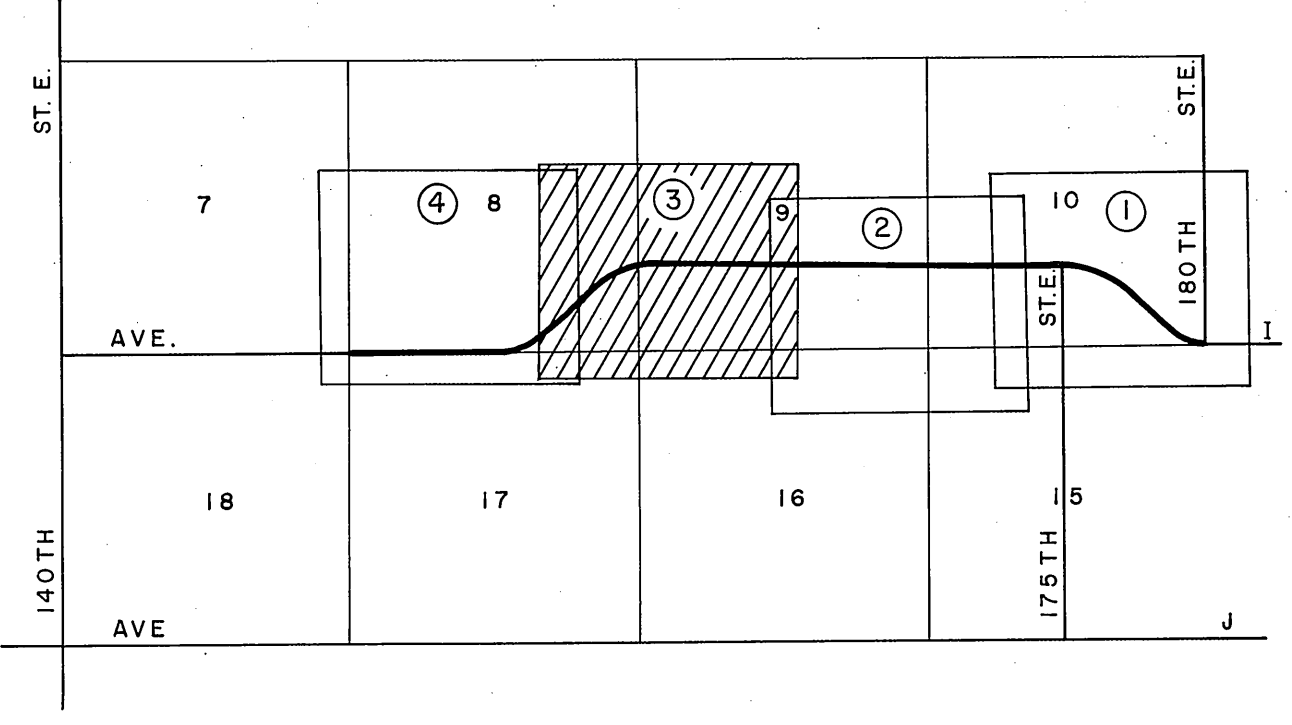
REVISIONS:
 (C) Cadastral Data Revised.



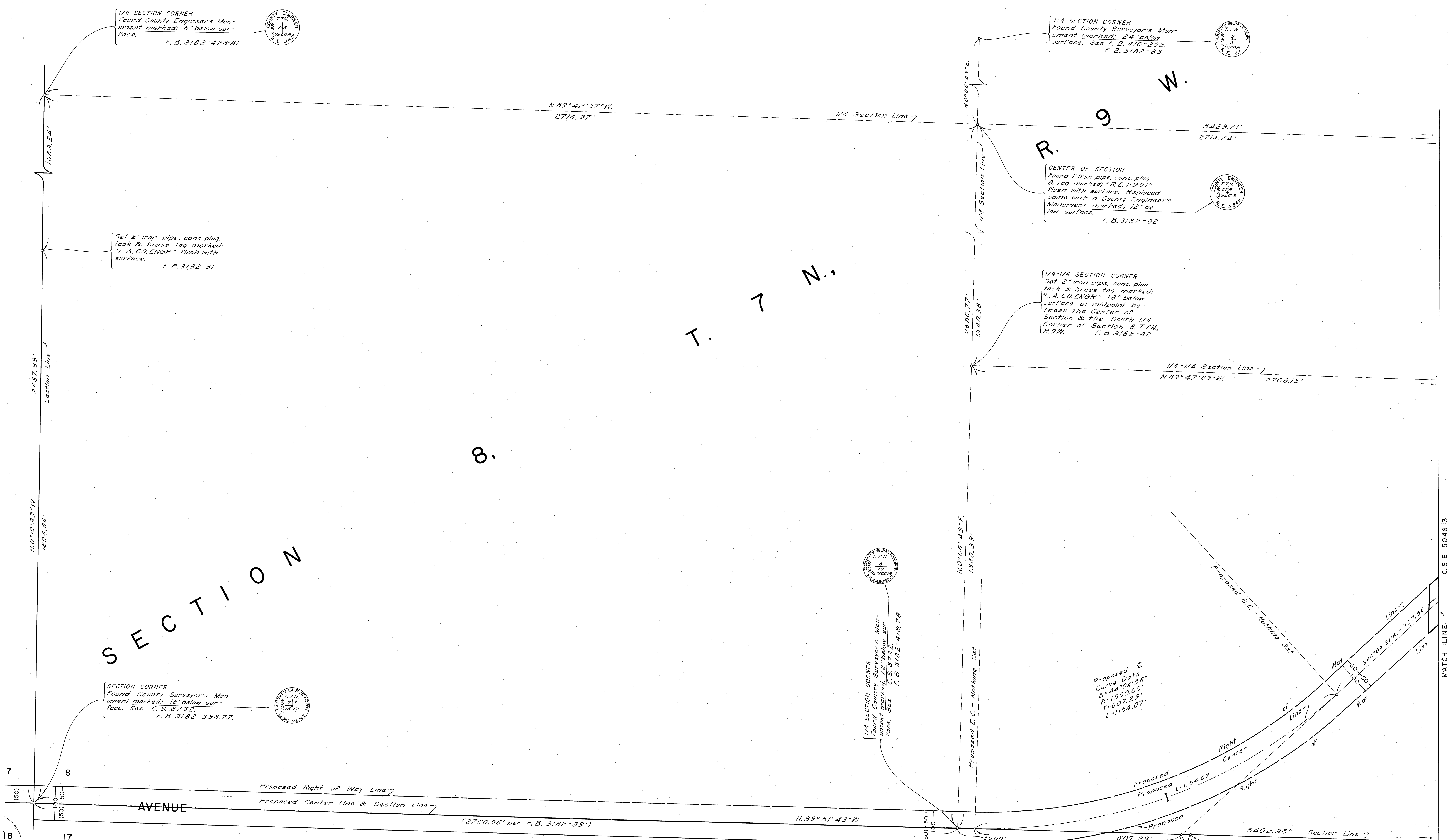
COUNTY OF LOS ANGELES DEPARTMENT OF COUNTY ENGINEER JOHN A. LAMRICH, COUNTY ENGINEER PREPARED BY SURVEY DIVISION C. E. BRUNTY, DIVISION ENGINEER SURVEYED BY J. S. COATES CHECKED BY G. D. BALLEW H. HOLMAN DRAWN BY S. R. BRIONES	ALIGNMENT MAP OF AVENUE I FROM 180TH STREET EAST TO SOUTHWEST CORNER OF SECTION 8, T. 7 N., R. 9 W.		COUNTY SURVEYOR'S MAP NO. B-5046 SHEET 2 OF 4 SHEETS FILED: <i>[Signature]</i> 1962 DECEMBER 1967 - APRIL 1968 SURVEYED REFERENCE F.B. 3182-75-103 JOB NUMBER 0075.98 INDEX MAP NO. 68 B 69	REVISION NO. BY DATE 1 BY 1-27-78
	THE BEARING OF THE NORTH LINE OF THE N. W. 1/4 OF SECTION 15, T. 7 N., R. 9 W., (N. 87° 30' 50" E.) AS SHOWN ON C.S.B.-2658			
	BASIS OF BEARINGS			
	SECTION 8, T. 7 N., R. 9 W.			



REVISIONS:
 ① Cadastral Data Revised.



COUNTY OF LOS ANGELES DEPARTMENT OF COUNTY ENGINEER JOHN A. LAMBE - COUNTY ENGINEER PREPARED BY SURVEY DIVISION C. E. BRUNTY - DIVISION ENGINEER SURVEYED BY J. S. COATES	ALIGNMENT MAP OF AVENUE I FROM 180TH STREET EAST TO SOUTHWEST CORNER OF SECTION 8, T. 7 N., R. 9 W.		COUNTY SURVEYOR'S MAP NO. B-5046		REVISION NO. BY DATE
			SHEET 3 OF 4 SHEETS FILED SURVEYED DECEMBER 1967 - APRIL 1968 REFERENCE F. B. 3182-75-103		JOB NUMBER 0075.98
CHECKED BY G. D. BAILEY H. HOLMAN DRAWN BY S. R. BRIONES			BASIS OF BEARINGS THE BEARING OF THE NORTH LINE OF THE N. W. 1/4 OF SECTION 15, T. 7 N., R. 9 W., (N. 87° 30' 50" E.) AS SHOWN ON C. S. B. 2658		



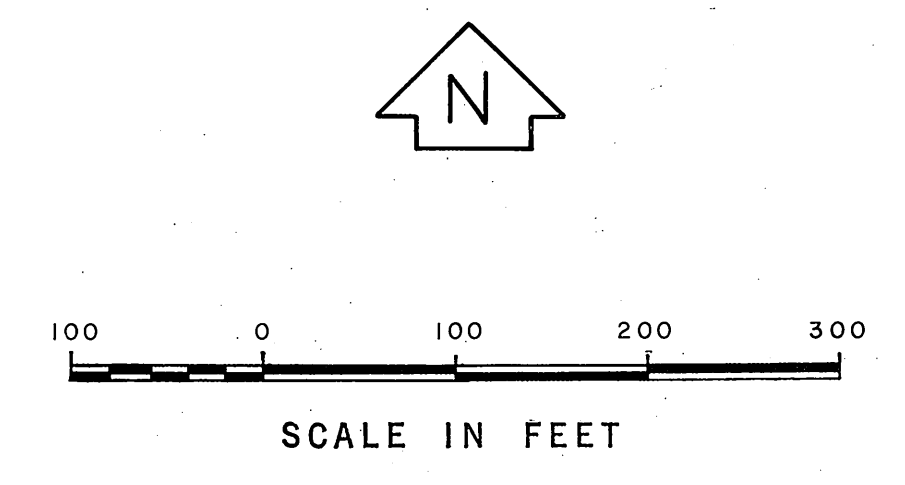
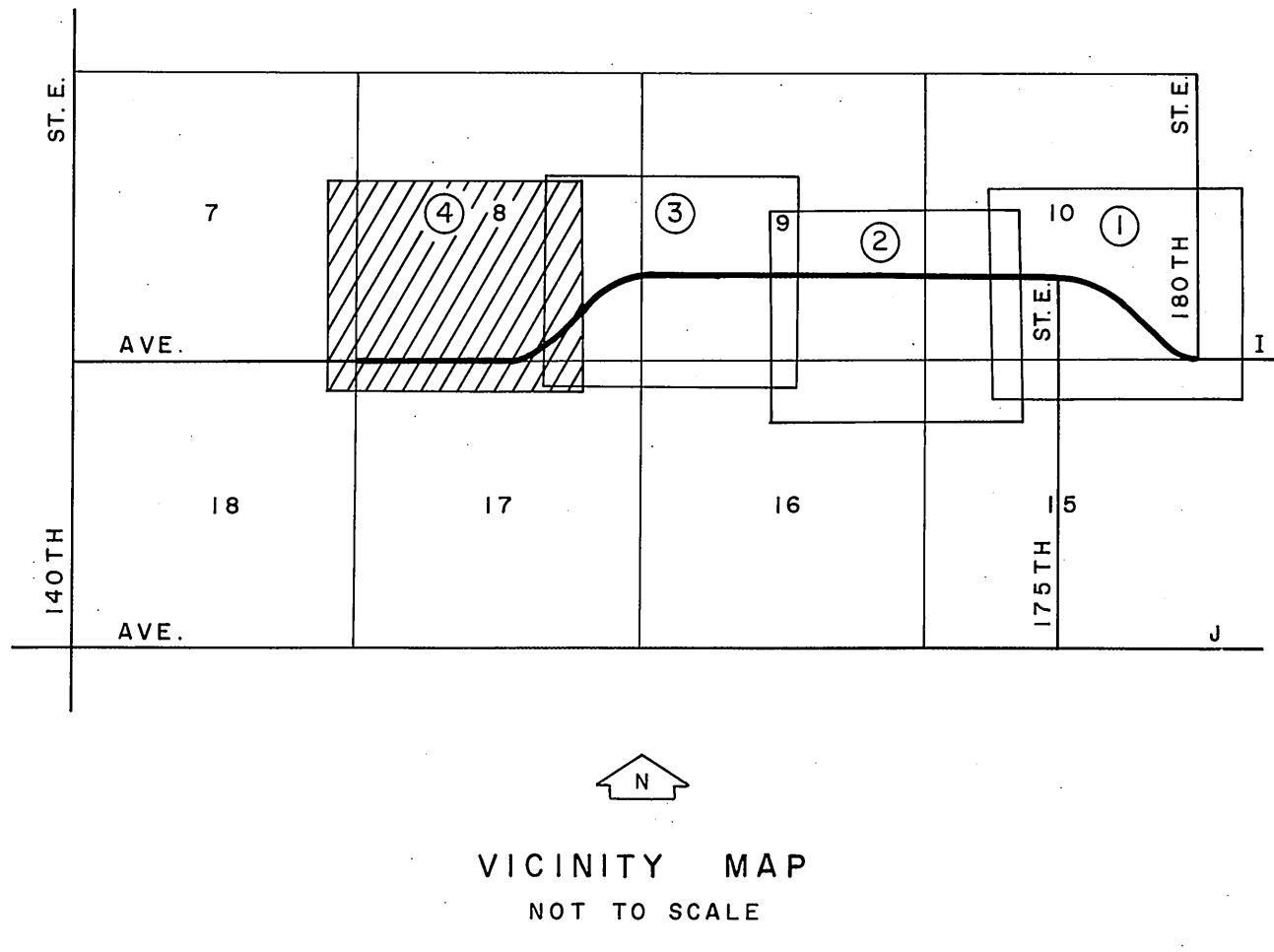
SECTION 8

T. 7 N., R. 9 W.

SECTION 17, T. 7 N., R. 9 W.

NOTE:
THE ALIGNMENT OF THE MAJOR
HIGHWAY AS PROPOSED ON THE MASTER
PLAN OF HIGHWAYS NOT ESTABLISHED
APRIL 1969.

REVISIONS:
© Cadastral Data Revised.



COUNTY OF LOS ANGELES DEPARTMENT OF COUNTY ENGINEER JOHN A. LAMBIE - COUNTY ENGINEER PREPARED BY SURVEY DIVISION C. E. BRUNTY - DIVISION ENGINEER SURVEYED BY J. S. COATES CHECKED BY G. D. BAILEY H. HOLMAN S. R. BRIONES	ALIGNMENT MAP OF AVENUE I FROM 180TH STREET EAST TO SOUTHWEST CORNER OF SECTION 8, T. 7 N., R. 9 W.		COUNTY SURVEYOR'S MAP NO. B-5046 SHEET 4 OF 4 SHEETS FILED 5-5-1968 DECEMBER 1967 - APRIL 1968 REFERENCE F. B. 3182-75-103 JOB NUMBER 0075-98 INDEX MAP NO. 68 & 69	REVISION NO. BY DATE 1-27-76
	BASIS OF BEARINGS THE BEARING OF THE NORTH LINE OF THE N. W. 1/4 OF SECTION 15, T. 7 N., R. 9 W., (N. 87° 30' 50" E.) AS SHOWN ON C. S. B-2658			
	Proposed & Curve Data $\Delta = 44^{\circ} 04' 56''$ $R = 1500.00'$ $T = 607.29'$ $L = 1154.07'$			
	Proposed R.I. Set 2" iron pipe, conc. plug, tack & brass tag marked "L.A. CO. ENGR." 12" below surface. F. B. 3182-104			