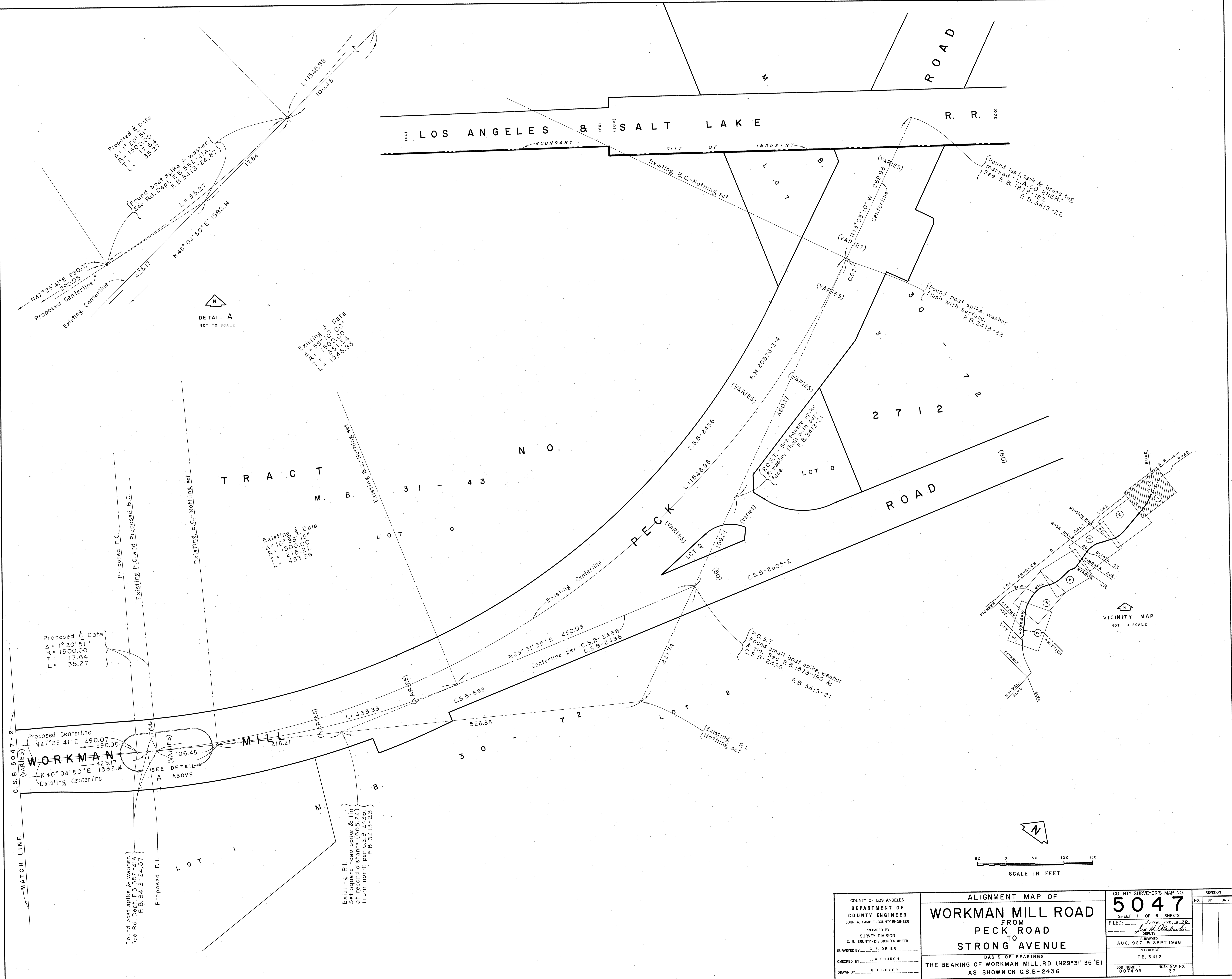
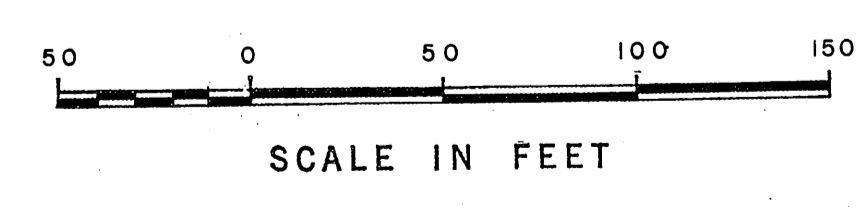


C.2.B-2047-1



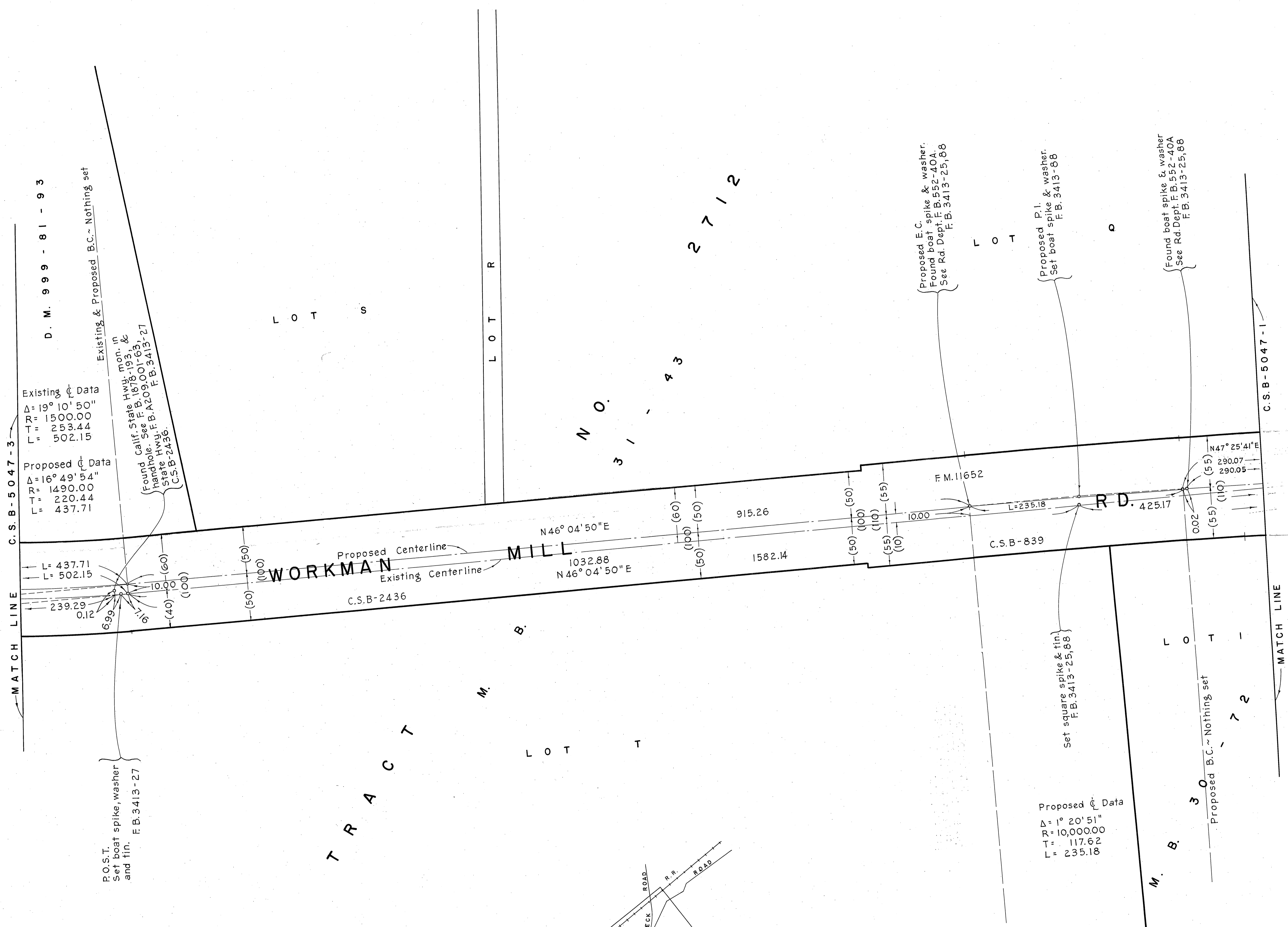
DETAIL A  
NOT TO SCALE

VICINITY MAP  
NOT TO SCALE



COUNTY OF LOS ANGELES DEPARTMENT OF COUNTY ENGINEER JOHN A. LAMBE - COUNTY ENGINEER PREPARED BY SURVEY DIVISION C. E. BRUNTY - DIVISION ENGINEER SURVEYED BY - G. E. DRIER CHECKED BY - J. A. CHURCH DRAWN BY - G. H. BOYER	ALIGNMENT MAP OF <b>WORKMAN MILL ROAD</b> FROM <b>PECK ROAD</b> TO <b>STRONG AVENUE</b>		COUNTY SURVEYOR'S MAP NO. <b>5047</b>	REVISION NO. BY DATE
	THE BEARING OF WORKMAN MILL RD. (N29°31'35"E) AS SHOWN ON C.S.B-2436		SHEET 1 OF 6 SHEETS FILED: <i>John A. Lambe</i> DEPUTY AUG. 1967 & SEPT. 1968 REFERENCE F.B. 3413	JOB NUMBER 07499
			INDEX MAP NO. 37	

C.2.B-2047-1



Existing  $\odot$  Data  
 $\Delta = 19^\circ 10' 50''$   
 $R = 1500.00$   
 $T = 253.44$   
 $L = 502.15$

Proposed  $\odot$  Data  
 $\Delta = 16^\circ 49' 54''$   
 $R = 1490.00$   
 $T = 220.44$   
 $L = 437.71$

P.O.S.T.  
 Set boat spike, washer  
 and tin.  
 F.B. 3413-27

Proposed E.C. spike & washer.  
 Found Post: F.B. 552-40A.  
 See Rd. Dept. F.B. 3413-25, 86

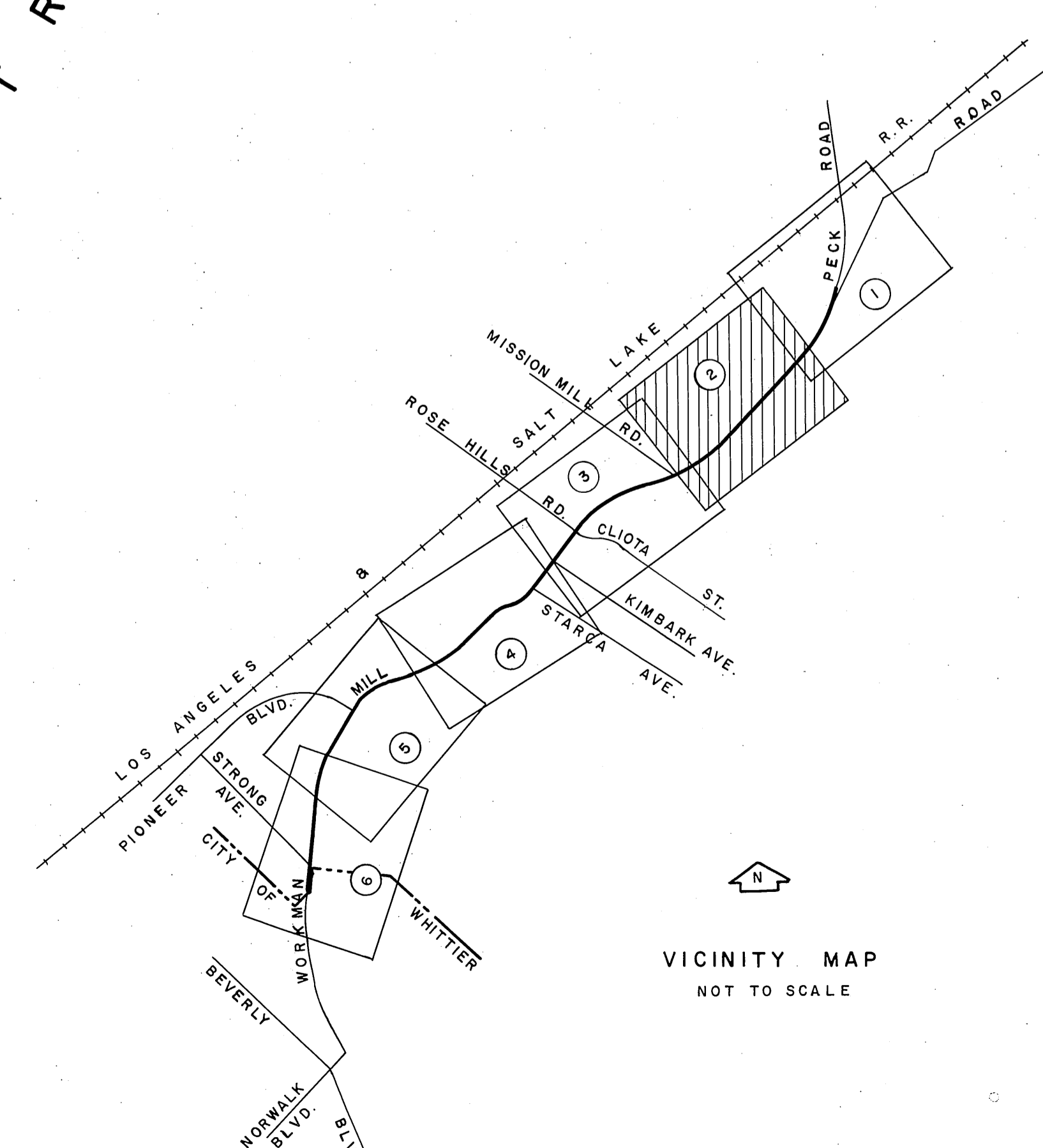
Proposed P.I. & washer.  
 Set boat spike  
 F.B. 3413-88

Found boat spike & washer  
 See Rd. Dept. F.B. 552-40A  
 F.B. 3413-25, 86

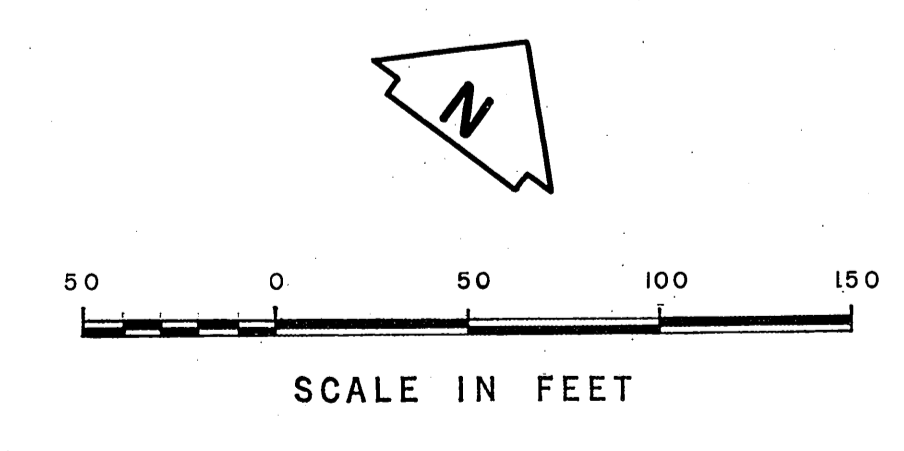
Proposed  $\odot$  Data  
 $\Delta = 1^\circ 20' 51''$   
 $R = 10,000.00$   
 $T = 117.62$   
 $L = 235.18$

Set square spike & tin.  
 F.B. 3413-25, 88

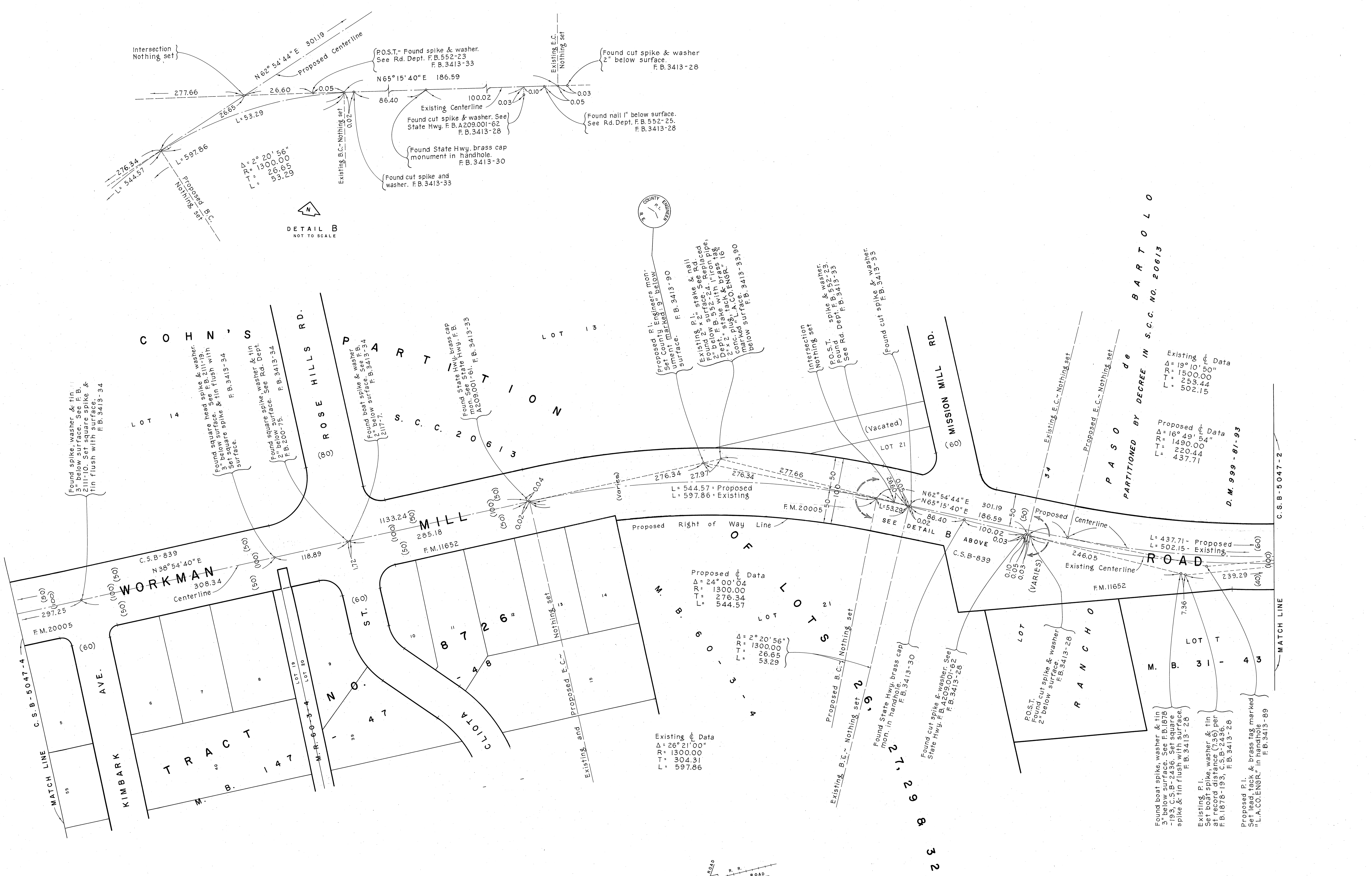
REVISIONS:  
 $\odot$  Cadastral Data Revised.



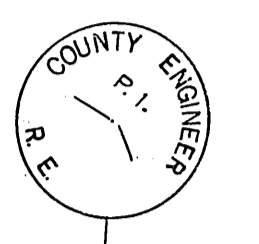
VICINITY MAP  
 NOT TO SCALE



COUNTY OF LOS ANGELES DEPARTMENT OF COUNTY ENGINEER JOHN A. LAMBE - COUNTY ENGINEER PREPARED BY SURVEY DIVISION C. E. BRUNTY - DIVISION ENGINEER SURVEYED BY G. E. DRIER CHECKED BY J. A. CHURCH DRAWN BY G. H. BOYER	ALIGNMENT MAP OF <b>WORKMAN MILL ROAD</b> FROM <b>PECK ROAD</b> TO <b>STRONG AVENUE</b>		COUNTY SURVEYOR'S MAP NO. <b>5047</b>	REVISION NO. BY DATE $\odot$
	BASIS OF BEARINGS <b>THE BEARING OF WORKMAN MILL RD. (N29°31'35"E)</b> AS SHOWN ON C.S.B-2436		SHEET 2 OF 6 SHEETS FILED: <i>June 10, 1970</i> <i>John A. Alford</i> DEPUTY SURVEYED AUG. 1967 & SEPT. 1968 REFERENCE F.B. 3413	JOB NUMBER 0074.99 INDEX MAP NO. 37
			JOB NUMBER 0074.99 INDEX MAP NO. 37	



DETAIL B  
NOT TO SCALE



Existing  $\Delta$  Data  
 $\Delta = 19^\circ 10' 50''$   
 $R = 1500.00$   
 $T = 253.44$   
 $L = 502.15$

Proposed  $\Delta$  Data  
 $\Delta = 16^\circ 49' 54''$   
 $R = 1490.00$   
 $T = 220.44$   
 $L = 437.71$

Proposed  $\Delta$  Data  
 $\Delta = 24^\circ 00' 04''$   
 $R = 1300.00$   
 $T = 276.34$   
 $L = 544.57$

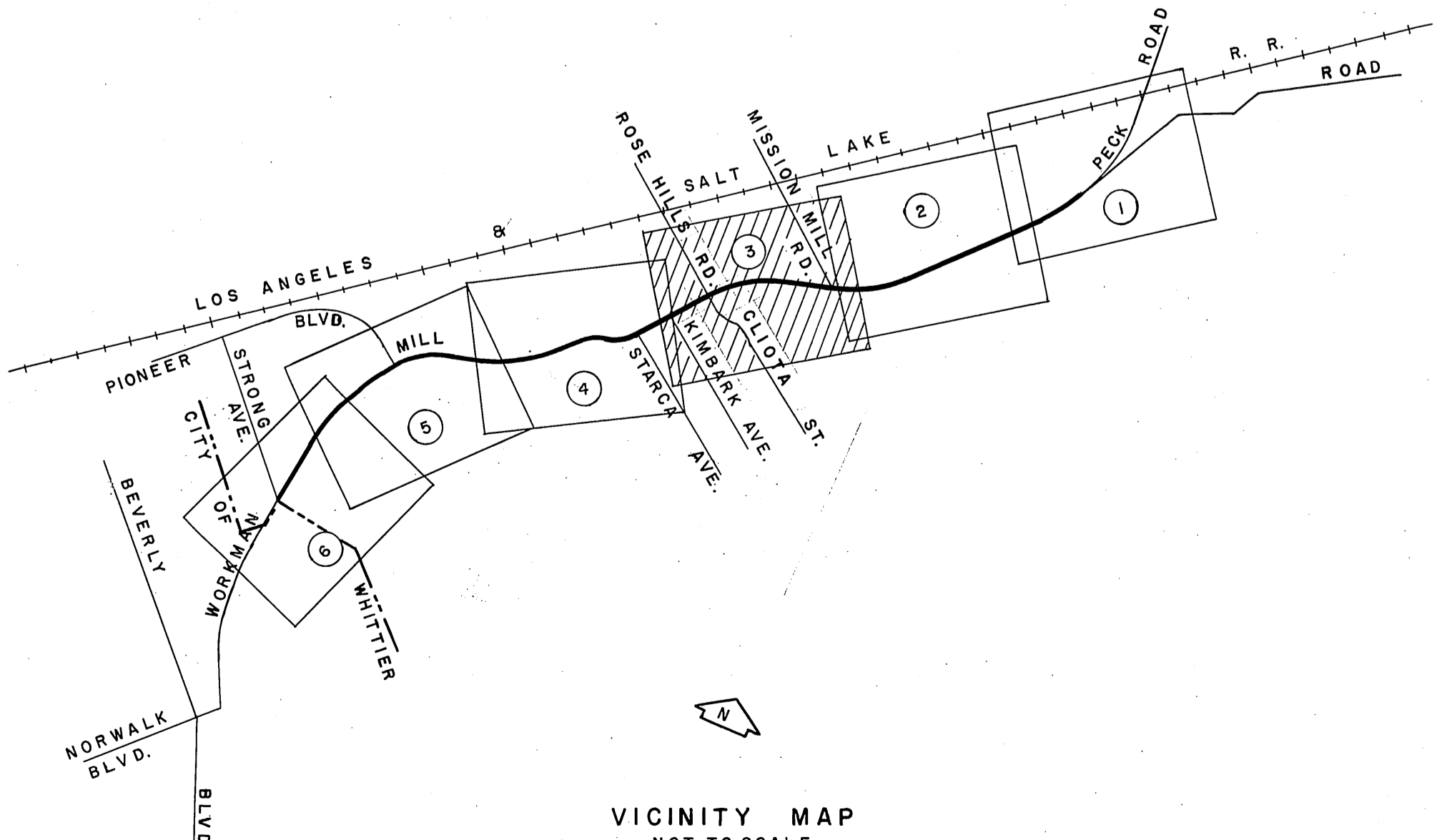
Existing  $\Delta$  Data  
 $\Delta = 26^\circ 21' 00''$   
 $R = 1300.00$   
 $T = 304.31$   
 $L = 597.86$

Found boat spike, washer & tin  
 3" below surface. See F.B. 1878-193, C.S.B-2436. Set square spike & tin flush with surface. F.B. 3413-28

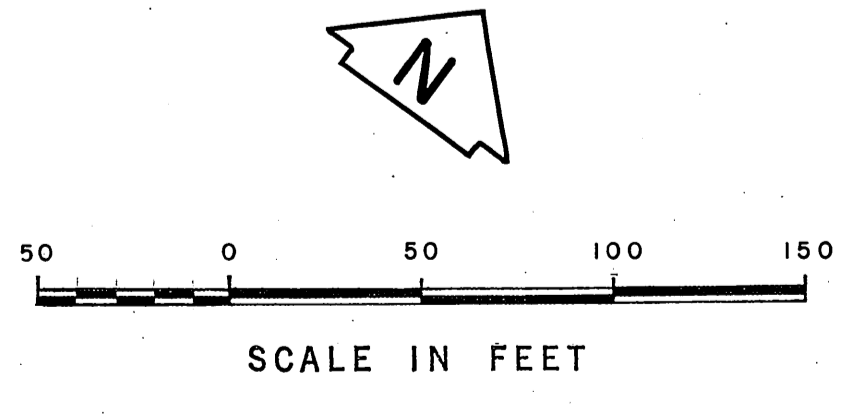
Existing P.I.  
 Found spike, washer, & tin at record distance (7.36) per F.B. 1878-193, C.S.B-2436. F.B. 3413-28

Proposed P.I.  
 Set lead tack & brass tag marked "L.A. CO. ENGR." in handhole. F.B. 3413-89

REVISIONS:  
 (C) Cadastral Data Revised.



VICINITY MAP  
NOT TO SCALE

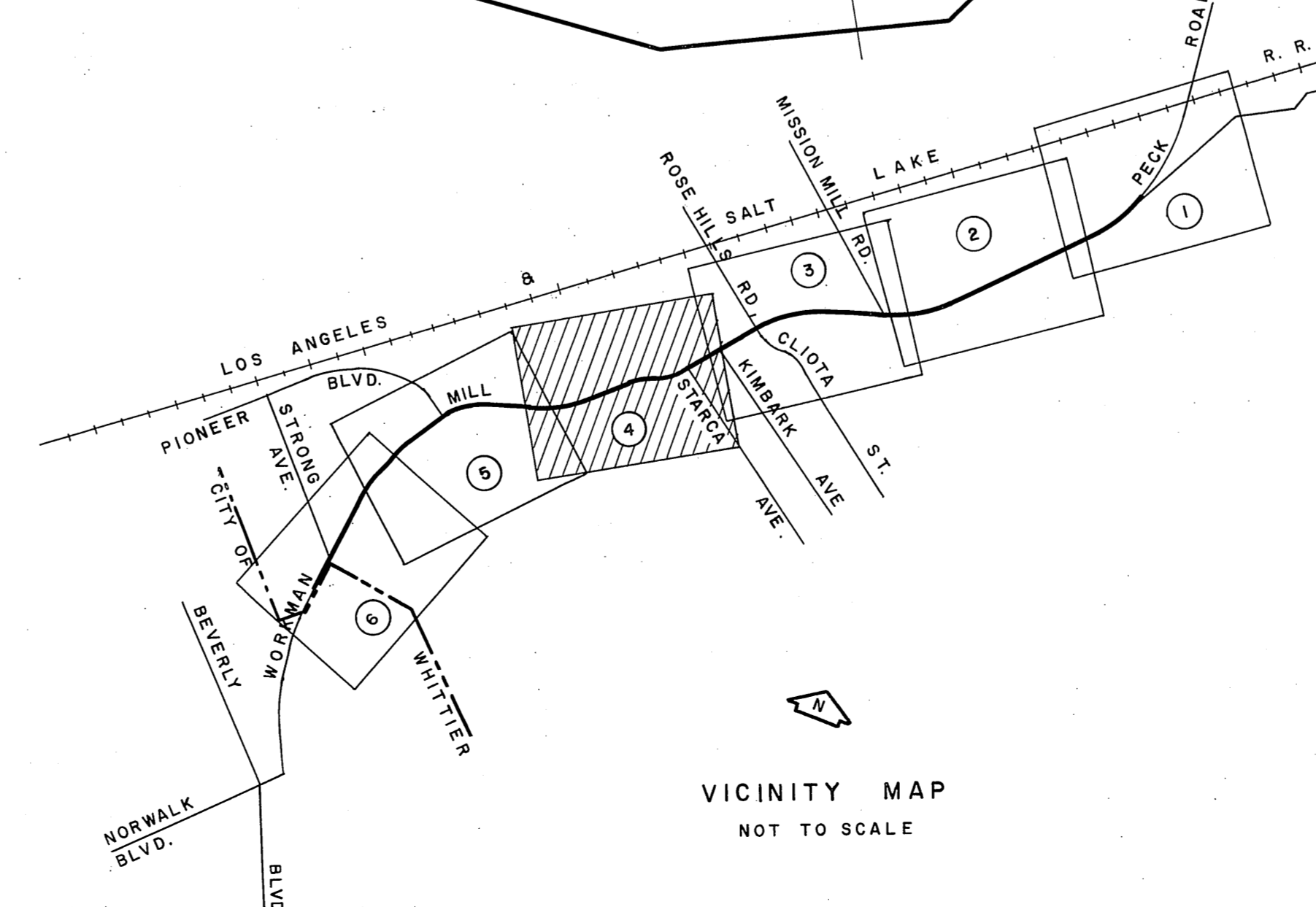
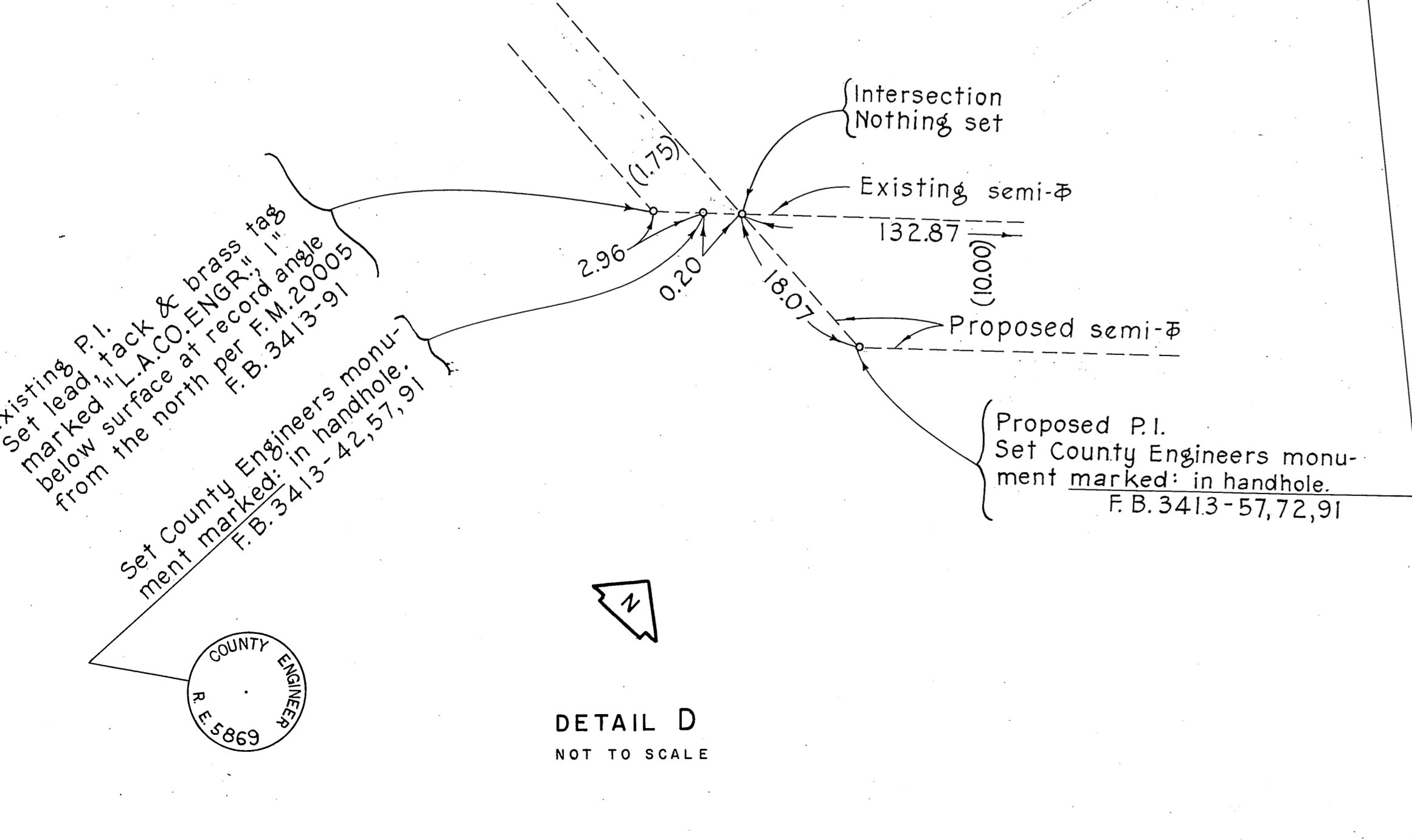
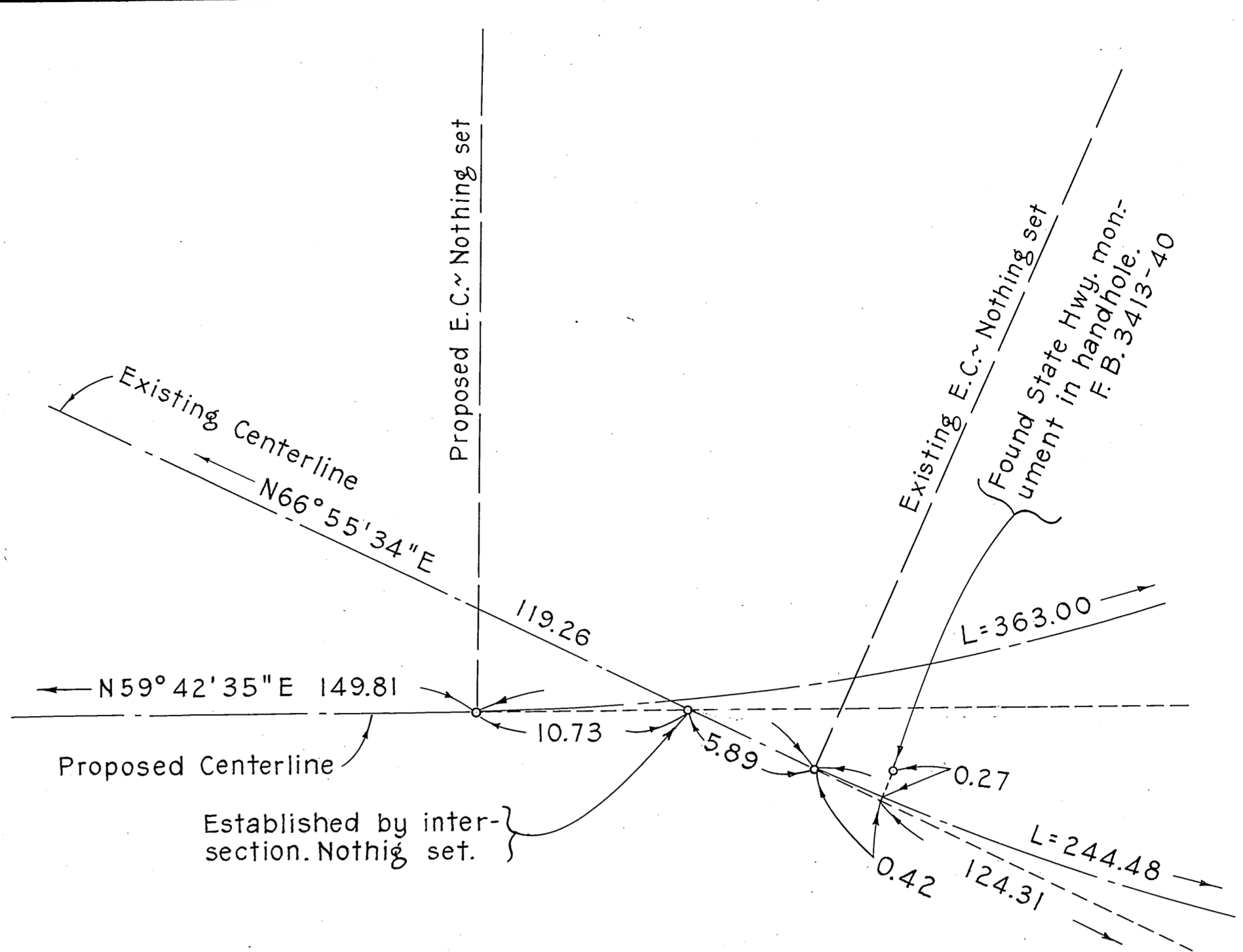
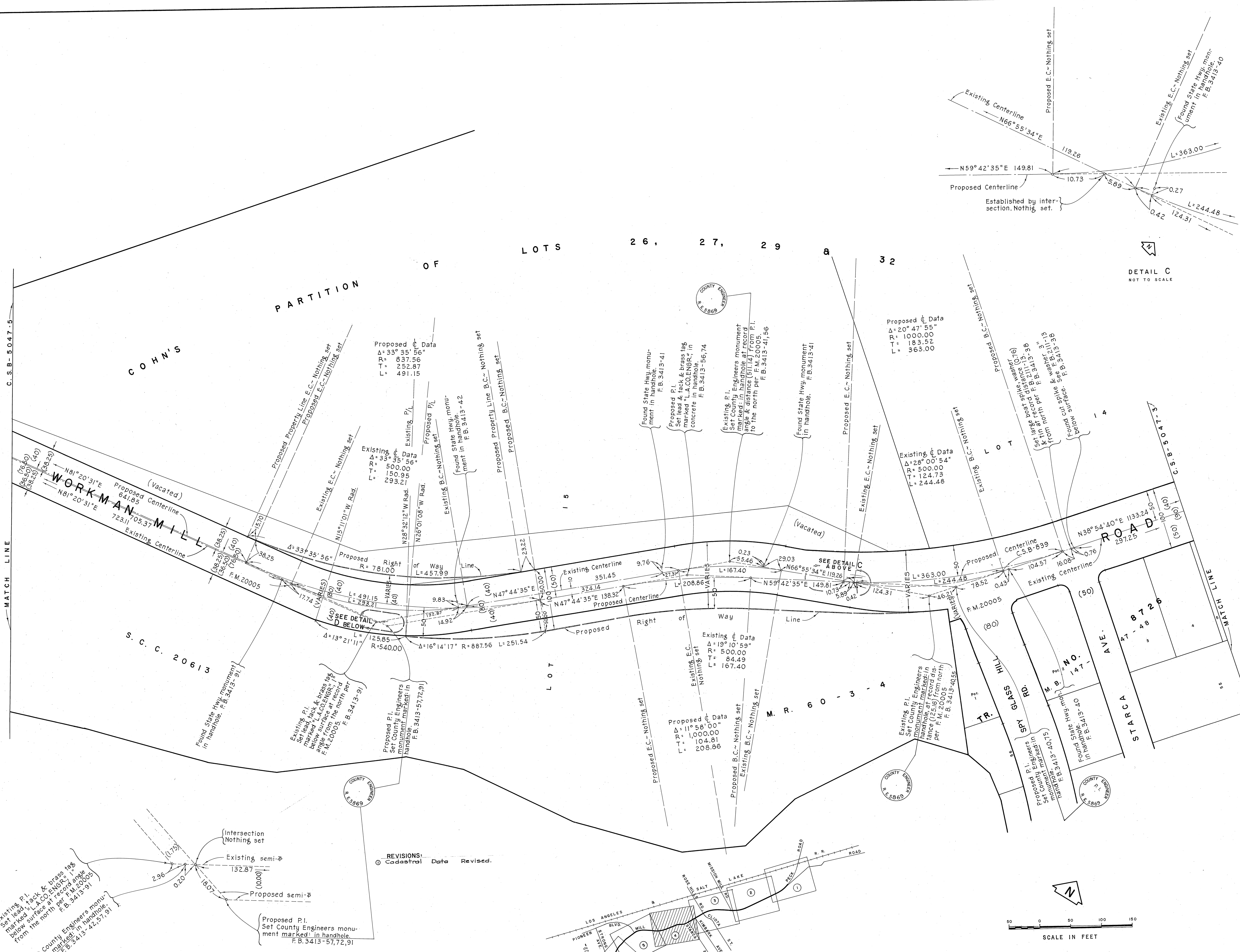


COUNTY OF LOS ANGELES  
 DEPARTMENT OF  
 COUNTY ENGINEER  
 JOHN A. LAMBIE - COUNTY ENGINEER  
 PREPARED BY  
 SURVEY DIVISION  
 C. E. BRUNTY - DIVISION ENGINEER  
 SURVEYED BY - G. E. DRIER  
 CHECKED BY - J. A. CHURCH  
 DRAWN BY - G. H. BOYER

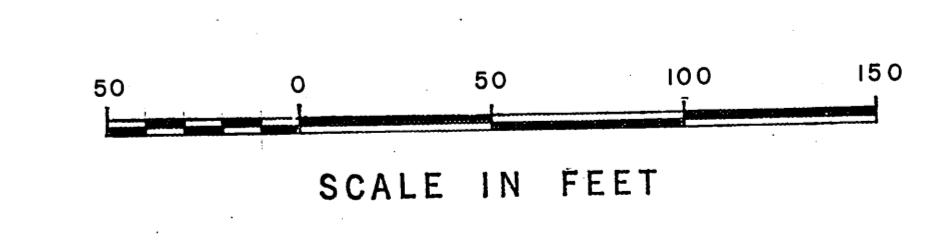
ALIGNMENT MAP OF  
**WORKMAN MILL ROAD**  
 FROM  
**PECK ROAD**  
 TO  
**STRONG AVENUE**  
 BASIS OF BEARINGS  
 THE BEARING OF WORKMAN MILL RD. (N29°31'35"E)  
 AS SHOWN ON C.S.B-2436

COUNTY SURVEYOR'S MAP NO.  
**5047**  
 SHEET 3 OF 6 SHEETS  
 FILED: *John A. Lambie*, 1967  
 DEPUTY  
 SURVEYED  
 AUG. 1967, 9 SEPT. 1968  
 REFERENCE  
 F.B. 3413  
 JOB NUMBER  
 0074-9-9 INDEX MAP NO.  
 37

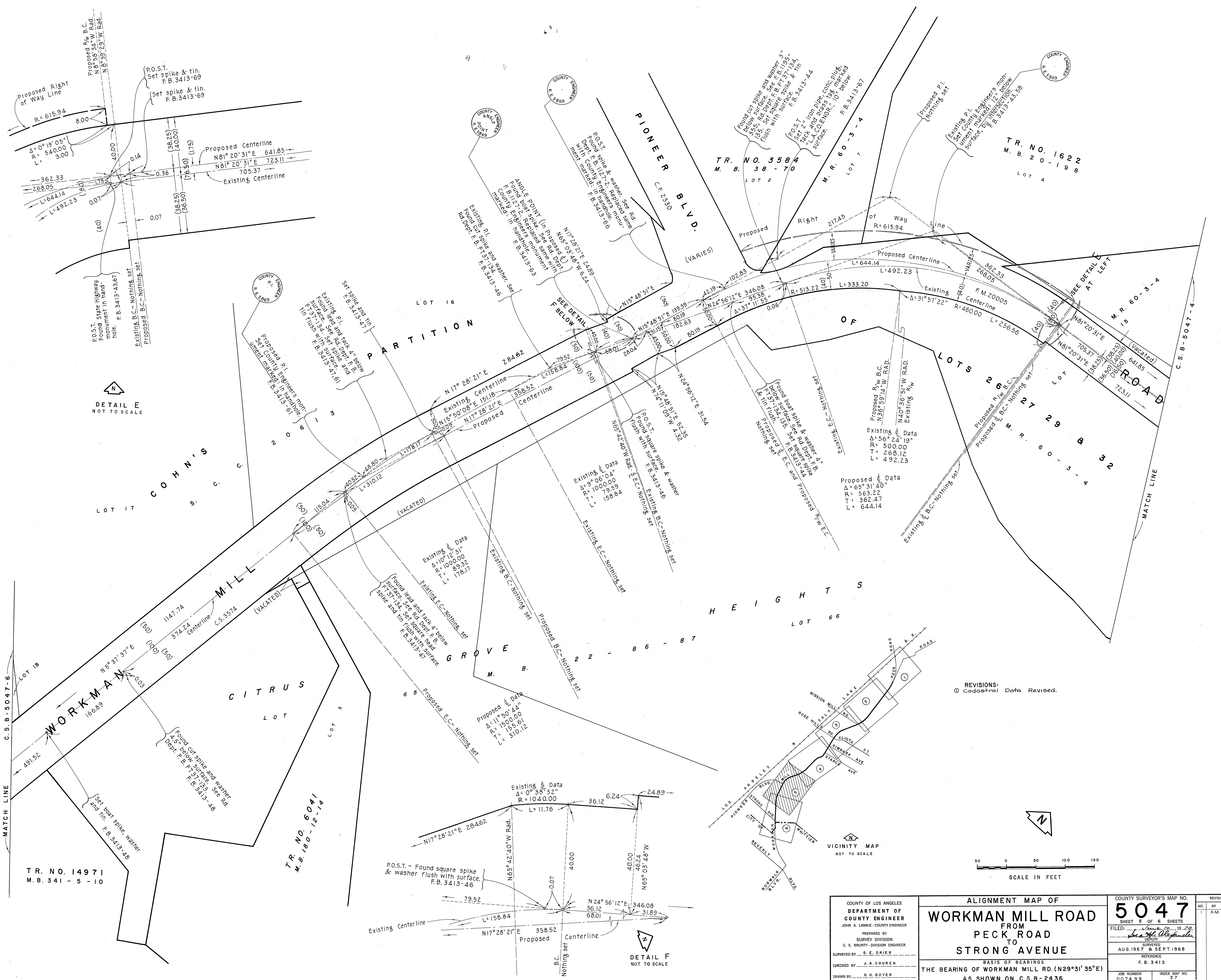
NO.	BY	DATE
1	A.M.	2-15-78



REVISIONS:  
 O Cadastral Data Revised.



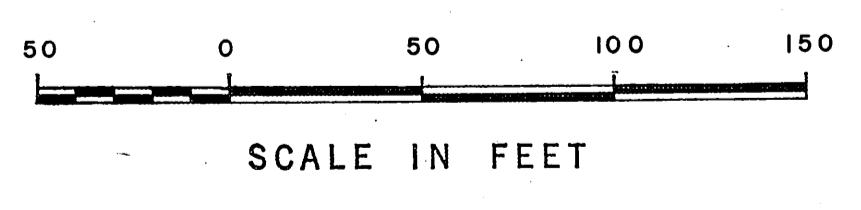
COUNTY OF LOS ANGELES DEPARTMENT OF COUNTY ENGINEER JOHN A. LAMBE, COUNTY ENGINEER PREPARED BY SURVEY DIVISION C. E. BRUNTY, DIVISION ENGINEER SURVEYED BY S. E. DRIER CHECKED BY J. A. CHURCH DRAWN BY G. N. BOYER	ALIGNMENT MAP OF <b>WORKMAN MILL ROAD</b> FROM <b>PECK ROAD</b> TO <b>STRONG AVENUE</b>		COUNTY SURVEYOR'S MAP NO. <b>5047</b>	REVISION NO. BY DATE 1 BY [Signature] 10 20 2 BY [Signature] 11 19
	THE BEARING OF WORKMAN MILL RD. (N29°31'35"E) AS SHOWN ON C.S.B-2436		SHEET 4 OF 6 SHEETS FILED: [Signature] 10 20 SURVEYED AUG. 1967 & SEPT. 1968	REFERENCE F. B. 3413
	BASIS OF BEARINGS THE BEARING OF WORKMAN MILL RD. (N29°31'35"E) AS SHOWN ON C.S.B-2436		JOB NUMBER 0074.99	INDEX MAP NO. 37
			COUNTY ENGINEER S. E. 5869	COUNTY ENGINEER S. E. 5869



DETAIL E  
NOT TO SCALE

DETAIL F  
NOT TO SCALE

REVISIONS:  
① Cadastral Data Revised.



COUNTY OF LOS ANGELES  
DEPARTMENT OF  
COUNTY ENGINEER  
JOHN A. LAMBLE, COUNTY ENGINEER

PREPARED BY  
SURVEY DIVISION  
C. E. BRUNTY, DIVISION ENGINEER

SURVEYED BY  
S. E. DRIER

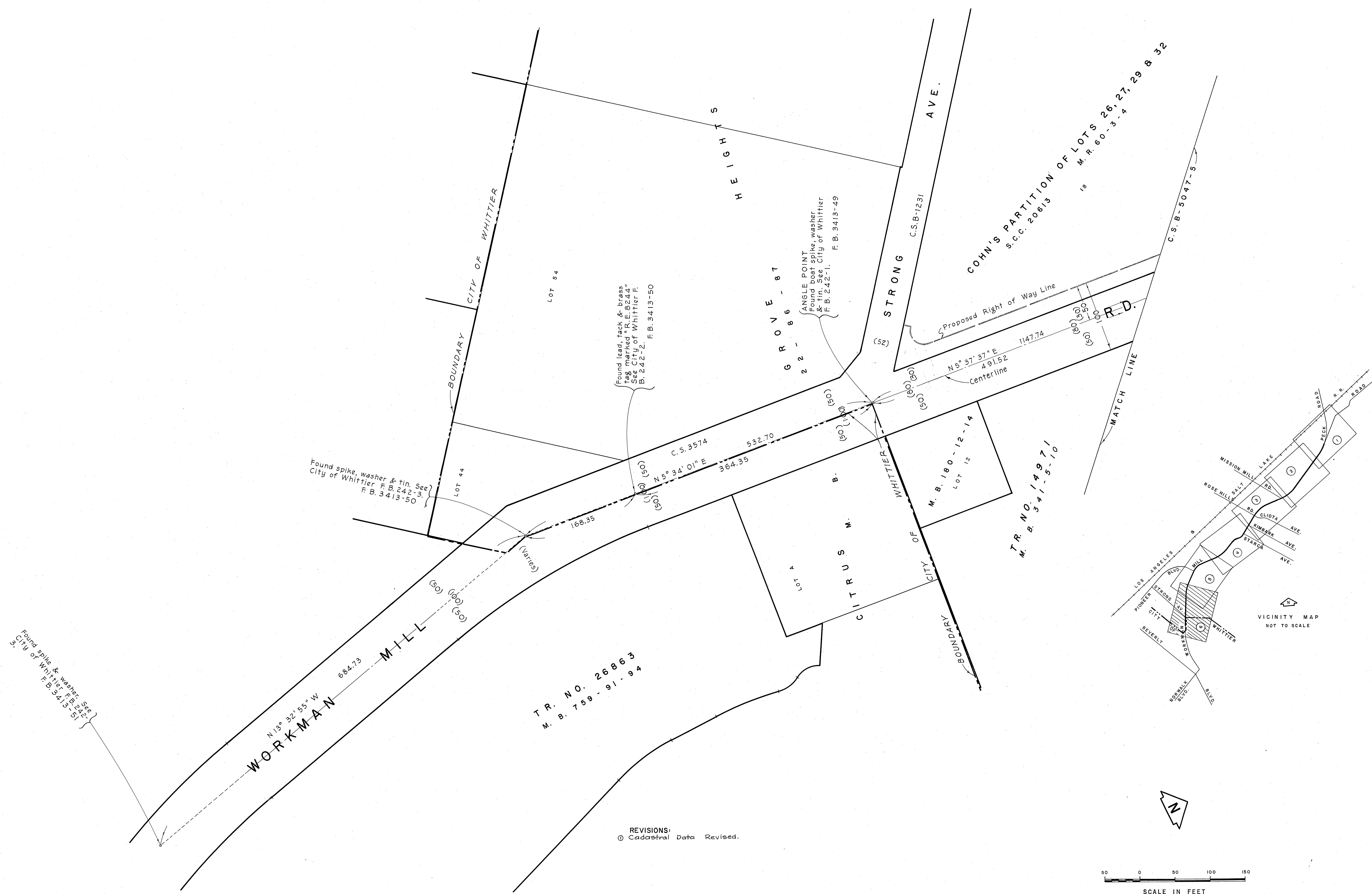
CHECKED BY  
J. A. CHURCH

DRAWN BY  
S. H. BOYER

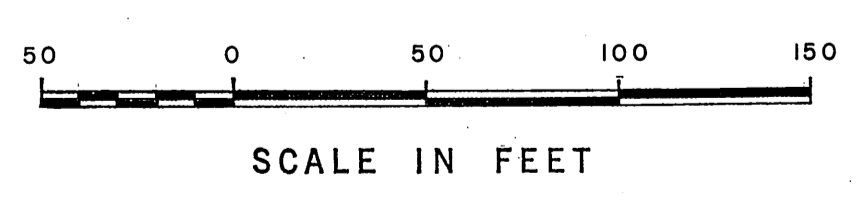
ALIGNMENT MAP OF  
**WORKMAN MILL ROAD**  
FROM  
**PECK ROAD**  
TO  
**STRONG AVENUE**

BASIS OF BEARINGS  
THE BEARING OF WORKMAN MILL RD. (N29°31'35"E)  
AS SHOWN ON C.S.B-2436

COUNTY SURVEYOR'S MAP NO. <b>5047</b>		REVISION
SHEET 5 OF 6 SHEETS		NO. BY DATE
FILED: <i>John A. Lamble</i> , 19 29		1 A.M. 2-1-78
AUG. 1967 8 SE P.T. 1968		
REFERENCE F. B. 3413		
JOB NUMBER 007499	INDEX MAP NO. 37	



REVISIONS:  
 © Cadastral Data Revised.



COUNTY OF LOS ANGELES DEPARTMENT OF COUNTY ENGINEER JOHN A. LAMMIE - COUNTY ENGINEER PREPARED BY SURVEY DIVISION C. E. BRUNTY - DIVISION ENGINEER SURVEYED BY G. E. DRIER CHECKED BY J. A. CHURCH DRAWN BY G. H. BOYER	ALIGNMENT MAP OF		COUNTY SURVEYOR'S MAP NO. <b>5047</b> SHEET 6 OF 6 SHEETS FILED: <i>John A. Lammie</i> 19 72 REFERENCED AUG. 1967 BY SEPT. 1968 REFERENCE F.B. 3413 JOB NUMBER 0074-99 INDEX MAP NO. 37	NO. BY DATE 10 A.M. 8-2-76
	<b>WORKMAN MILL ROAD</b> FROM <b>PECK ROAD</b> TO <b>STRONG AVENUE</b>			REVISION
	BASIS OF BEARINGS THE BEARING OF WORKMAN MILL RD. ( $N 29^{\circ} 31' 35'' E$ ) AS SHOWN ON C.S.B-2436			NO. BY DATE 10 A.M. 8-2-76
				NO. BY DATE 10 A.M. 8-2-76
				NO. BY DATE 10 A.M. 8-2-76
				NO. BY DATE 10 A.M. 8-2-76