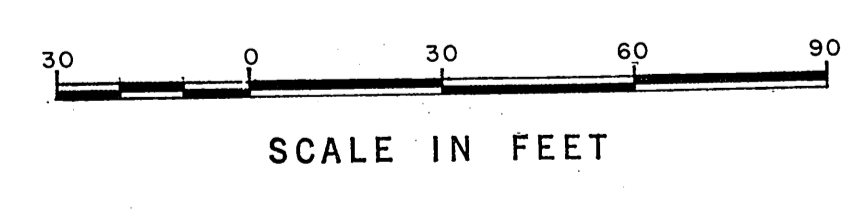
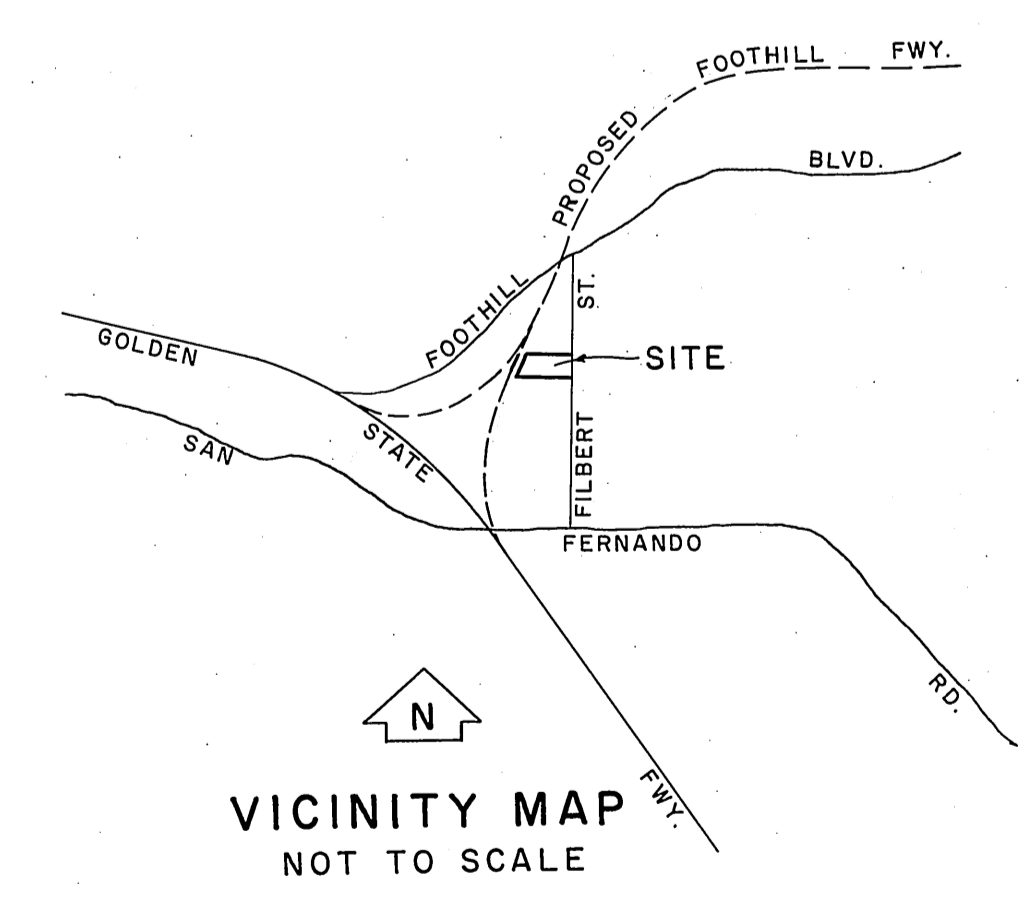
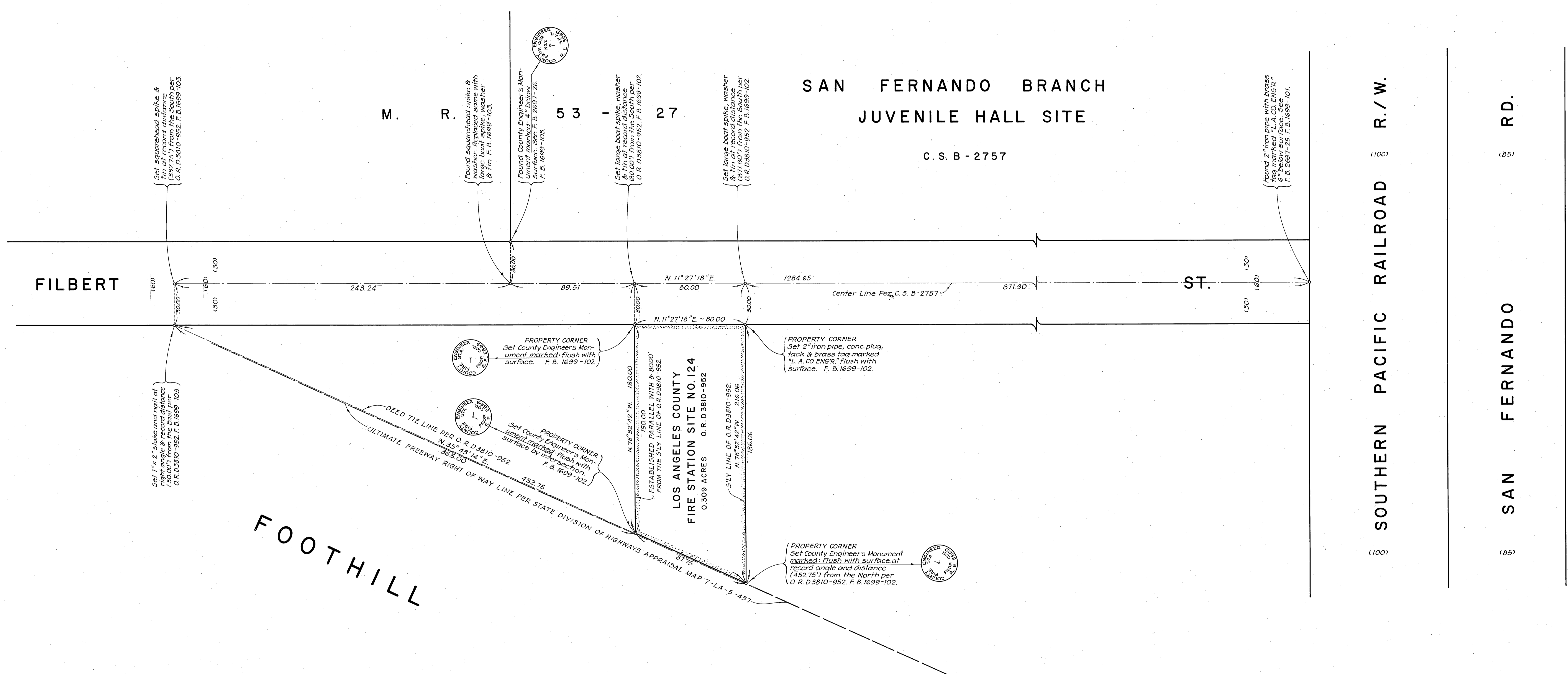


# LOS ANGELES OLIVE GROWERS ASSOCIATION LANDS



COUNTY OF LOS ANGELES DEPARTMENT OF COUNTY ENGINEER JOHN A. LAMBIE - COUNTY ENGINEER PREPARED BY SURVEY DIVISION C. E. BRUNTY - DIVISION ENGINEER SURVEYED BY <u>J. P. MENNE</u> CHECKED BY <u>J. A. CHURCH</u> DRAWN BY <u>M. HAMASU</u>	<b>BOUNDARY MAP OF</b> <b>FIRE STATION SITE NO. 124</b> <b>SYLMAR AREA</b> FOR TOPOGRAPHY SEE SURVEY DIVISION FILED MAP NO. P. T. H-183.		COUNTY SURVEYOR'S MAP NO. <b>B-5048</b> SHEET 1 OF 1 SHEETS FILED: <u>March 7, 1962</u> <u>C.E. Brunty</u> DEPUTY SURVEYED FEB. 1969 REFERENCE F. B. 1699-100-104		REVISION NO. BY DATE
	BASIS OF BEARINGS THE BEARING OF FILBERT ST. (N. 11° 27' 18" E.) AS SHOWN ON C. S. B - 2757.		JOB NUMBER 0039.06		INDEX MAP NO. 56