

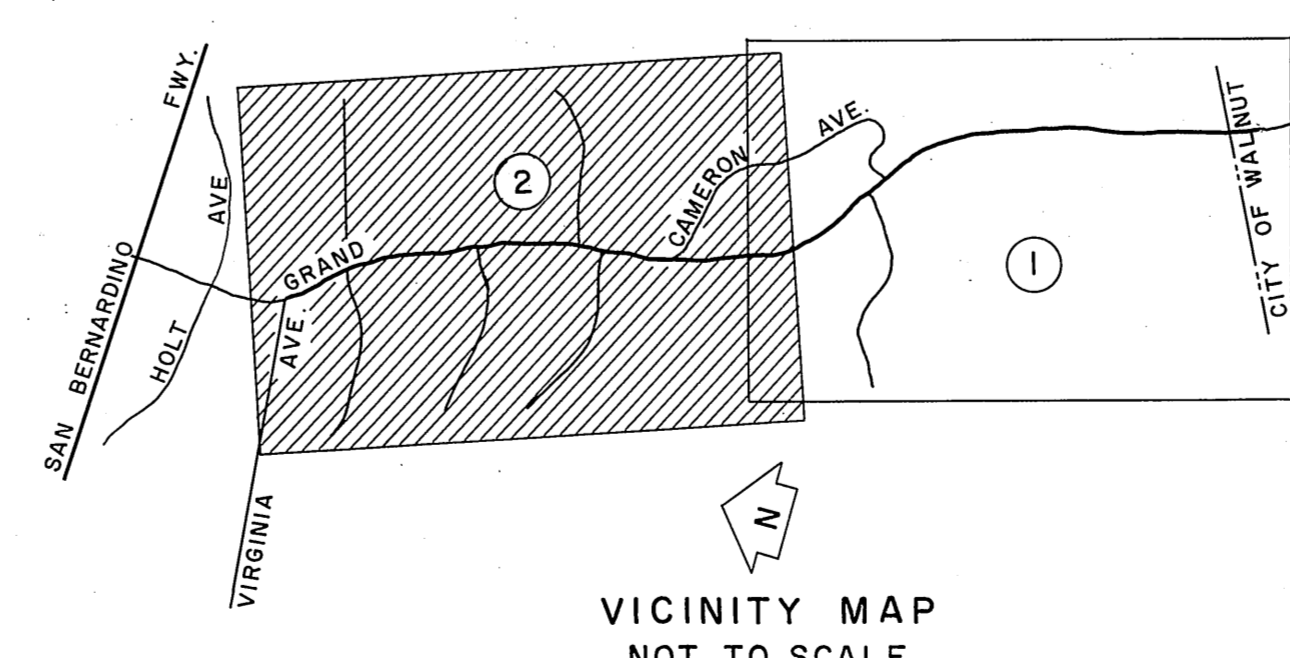
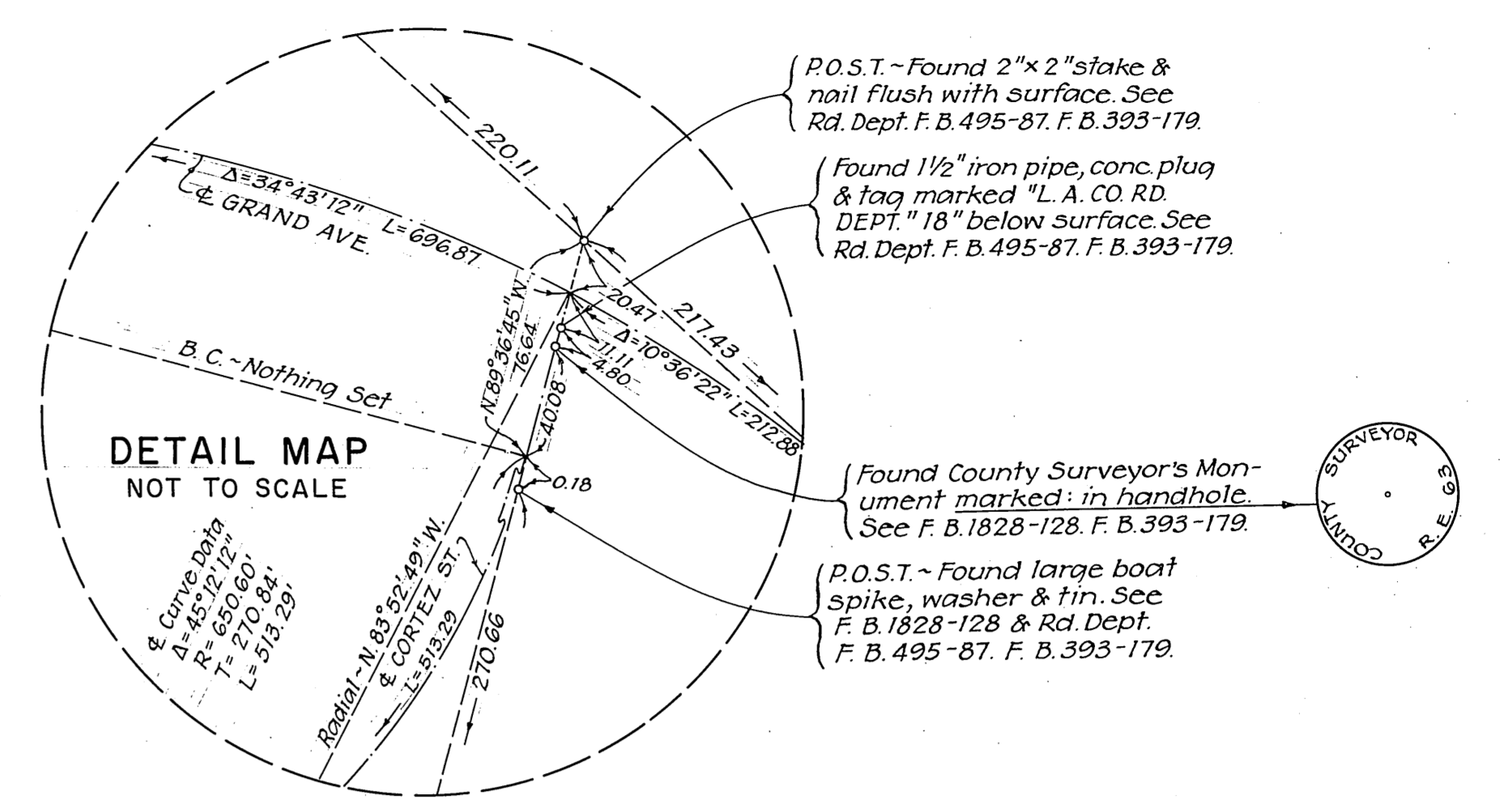
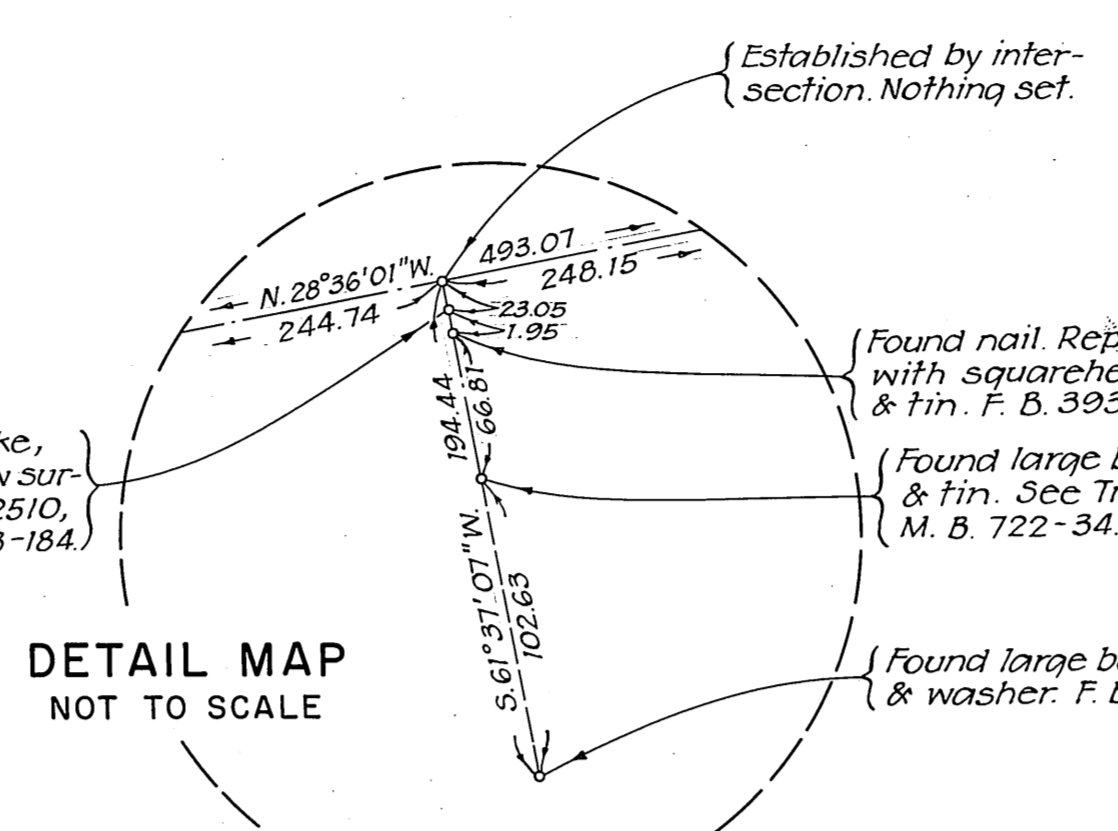
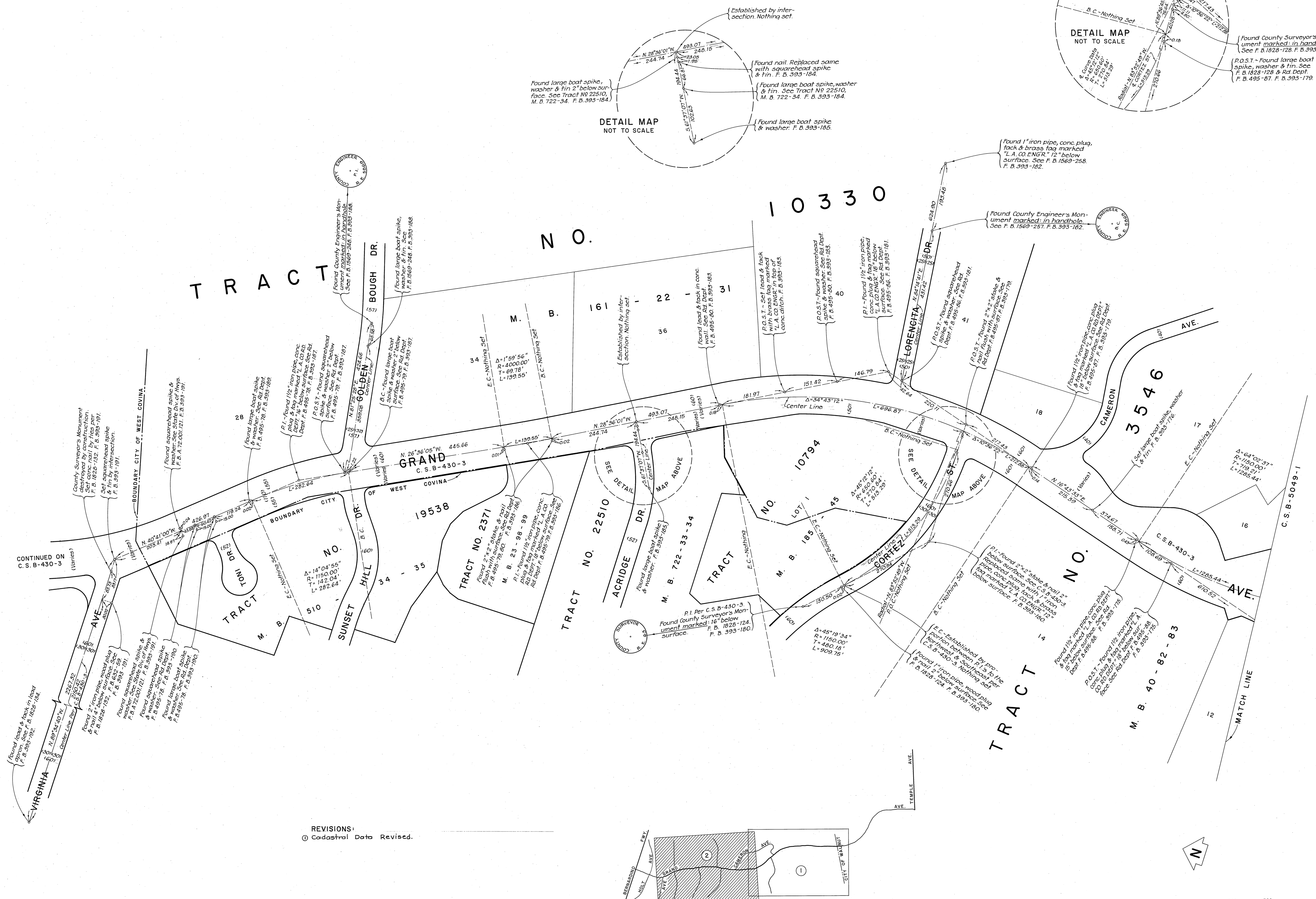
NOTE:
 THE ALIGNMENT OF THE MAJOR
 HIGHWAY AS PROPOSED ON THE MASTER
 PLAN OF HIGHWAYS CONTACT CITY OF
 WALNUT.

COUNTY OF LOS ANGELES
 DEPARTMENT OF
 COUNTY ENGINEER
 JOHN A. LAMBIE - COUNTY ENGINEER
 PREPARED BY
 SURVEY DIVISION
 C. E. BRUNTY - DIVISION ENGINEER
 SURVEYED BY L. L. BROWN
 CHECKED BY D. SAPPPELL
 DRAWN BY M. HAMASU

ALIGNMENT MAP OF
GRAND AVENUE
 FROM
 N'LY B'DRY CITY OF WALNUT
 TO
VIRGINIA AVENUE
 BASIS OF BEARINGS
 THE BEARING OF VIRGINIA AVE. (N. 89° 34' 40" W.)
 AS SHOWN ON C.S.B. - 430-3.

COUNTY SURVEYOR'S MAP NO.
B-5049
 SHEET 1 OF 2 SHEETS
 FILED 4-14-62
Henry J. Brantman
 DEPUTY
 SURVEYED
 JUNE 1965
 REFERENCE
 F. B. 393-162-192
 JOB NUMBER 0074.20 INDEX MAP NO. 48

REVISION		
NO.	BY	DATE



REVISIONS:
 ① Cadastral Data Revised.

SCALE IN FEET
 0 100 200 300

COUNTY OF LOS ANGELES DEPARTMENT OF COUNTY ENGINEER JOHN A. LAMBIE - COUNTY ENGINEER PREPARED BY SURVEY DIVISION C. E. BRUNY - DIVISION ENGINEER SURVEYED BY - L. L. BROWN CHECKED BY - D. SAPPPELL DRAWN BY - M. HAMASU	ALIGNMENT MAP OF GRAND AVENUE FROM N'L Y B'DRY CITY OF WALNUT TO VIRGINIA AVENUE		COUNTY SURVEYOR'S MAP NO. B-5049	REVISION NO. BY DATE ① A.M. 2-25-78	
	BASIS OF BEARINGS THE BEARING OF VIRGINIA AVE. (N.89°34'40"W) AS SHOWN ON C.S.B-430-3.		SHEET 2 OF 2 SHEETS FILED: <i>[Signature]</i> 19 62 DEPUTY JUNE 1965		
			REFERENCE F. B. 393-162-192		
			JOB NUMBER 0074.20	INDEX MAP NO. 48	