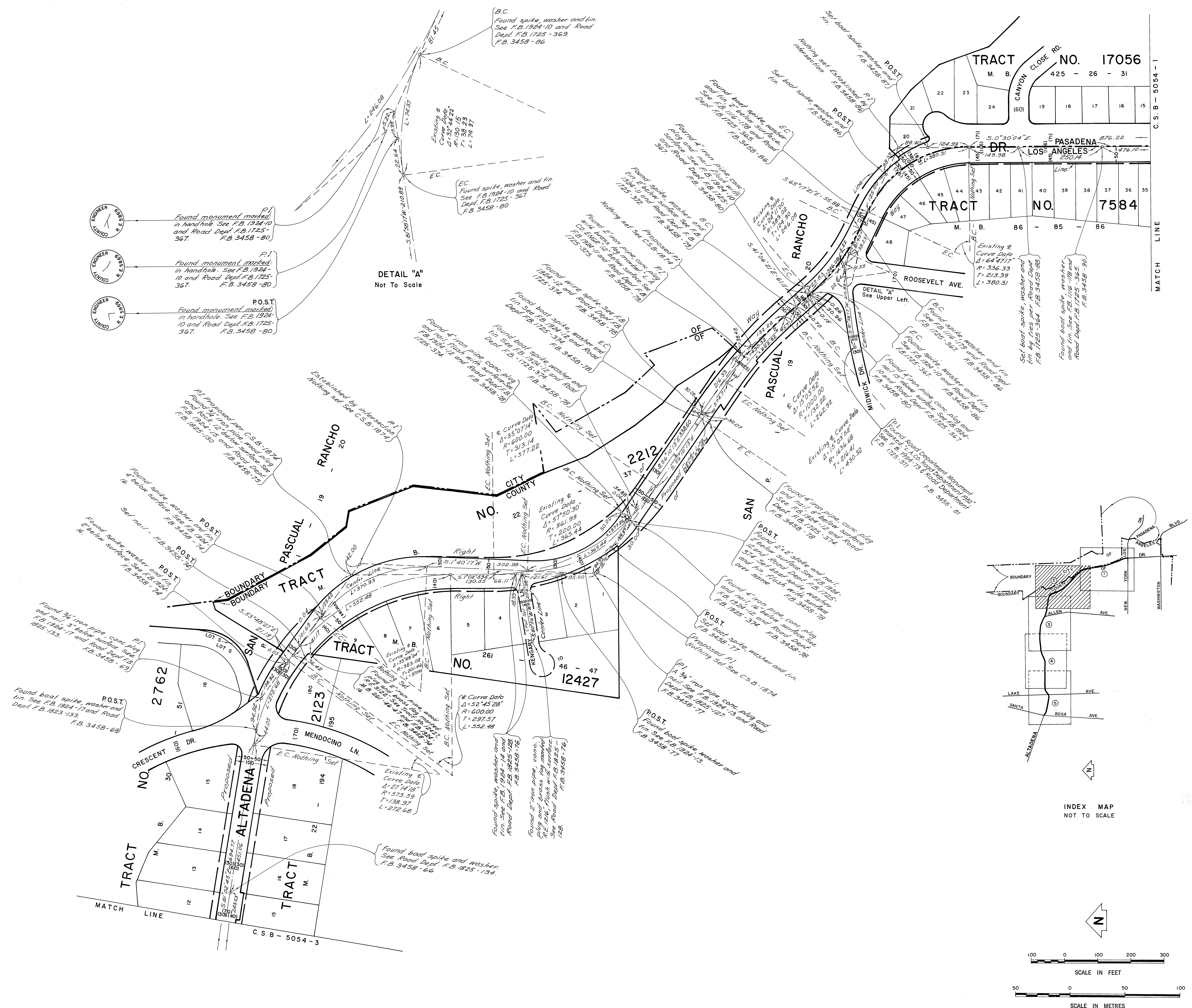


COUNTY OF LOS ANGELES DEPARTMENT OF COUNTY ENGINEER-FACILITIES PREPARED BY SURVEY DIVISION RICHARD J. MITCHELL-DIVISION ENGINEER SURVEYED BY A. S. CURTIS CHECKED BY BOB GOINS DRAWN BY C. L. VILLALUNA	ALIGNMENT MAP OF ALTADENA DRIVE FROM NEW YORK DRIVE TO SANTA ROSA AVENUE		COUNTY SURVEYOR'S MAP NO. B-5054		REVISION NO. BY DATE
	BASIS OF BEARINGS CALIFORNIA COORDINATE SYSTEM, ZONE 7		SHEET 1 OF 5 SHEETS FILED: <i>April 18, 1982</i> <i>Bob Goins</i> DEPUTY SURVEYOR MAY 1982 REFERENCE F. B. 3458		
			JOB NUMBER 1500.14		INDEX MAP NO. 88



ENGINEER 6985 S
LANDNO

ENGINEER 6985 S
LANDNO

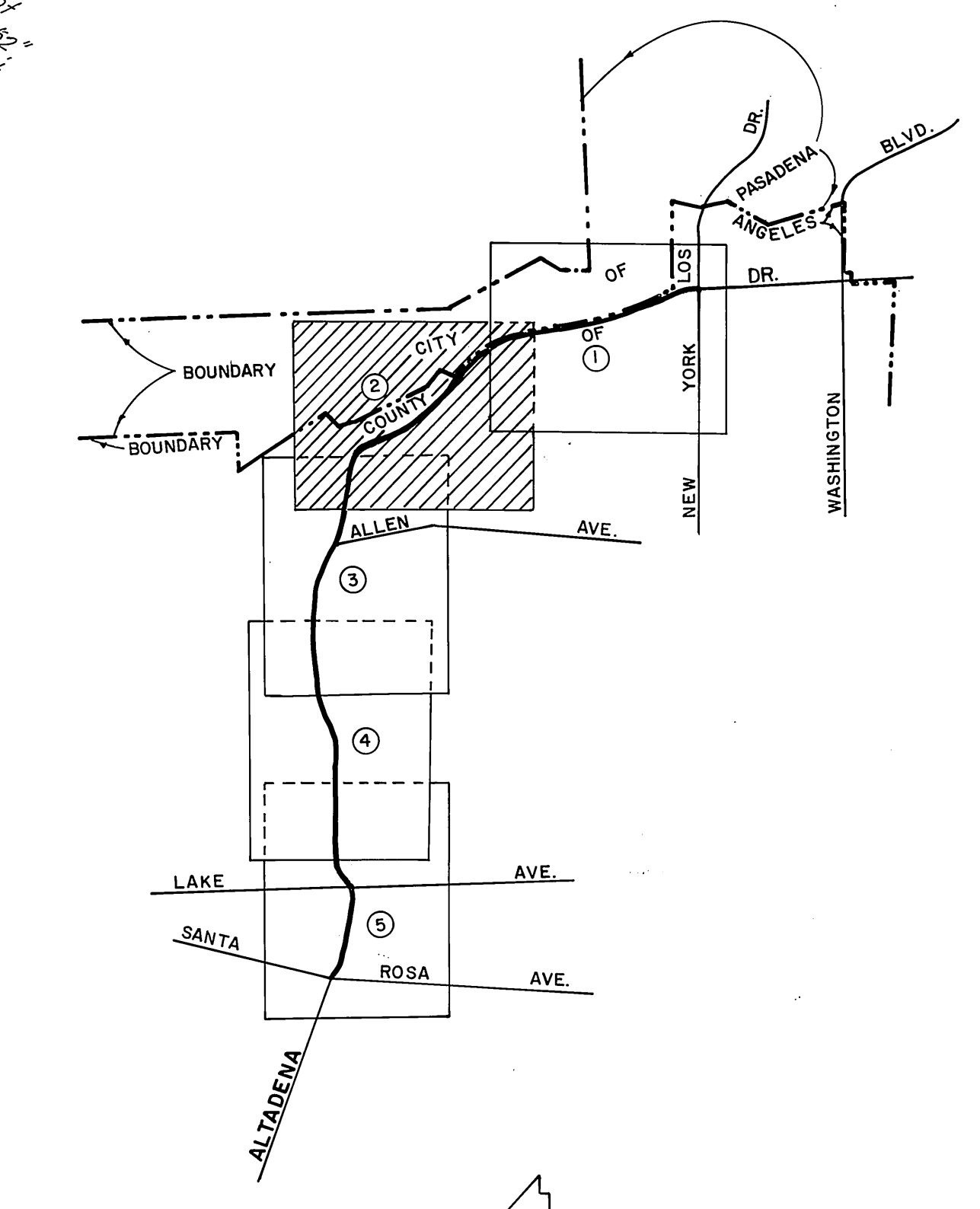
ENGINEER 6985 S
LANDNO

Found monument marked in handhole. See F.B. 1924-10 and Road Dept. F.B. 1725-367. F.B. 3458-80

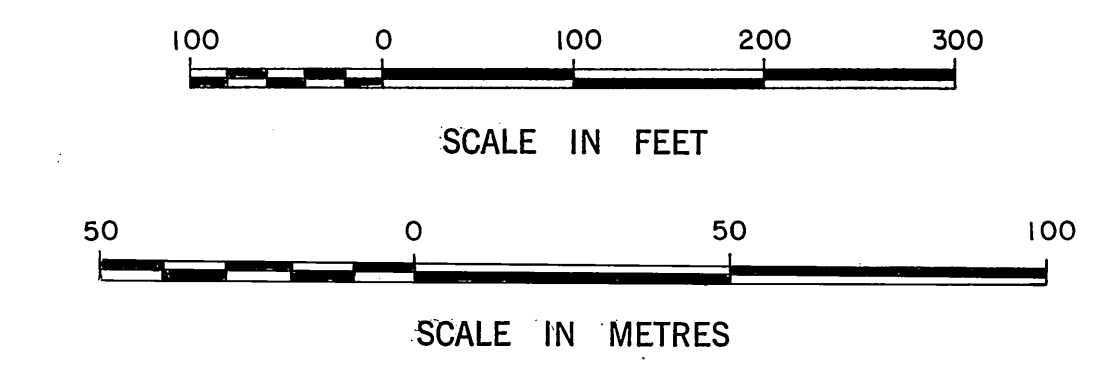
Found monument marked in handhole. See F.B. 1924-10 and Road Dept. F.B. 1725-367. F.B. 3458-80

Found monument marked in handhole. See F.B. 1924-10 and Road Dept. F.B. 1725-367. F.B. 3458-80

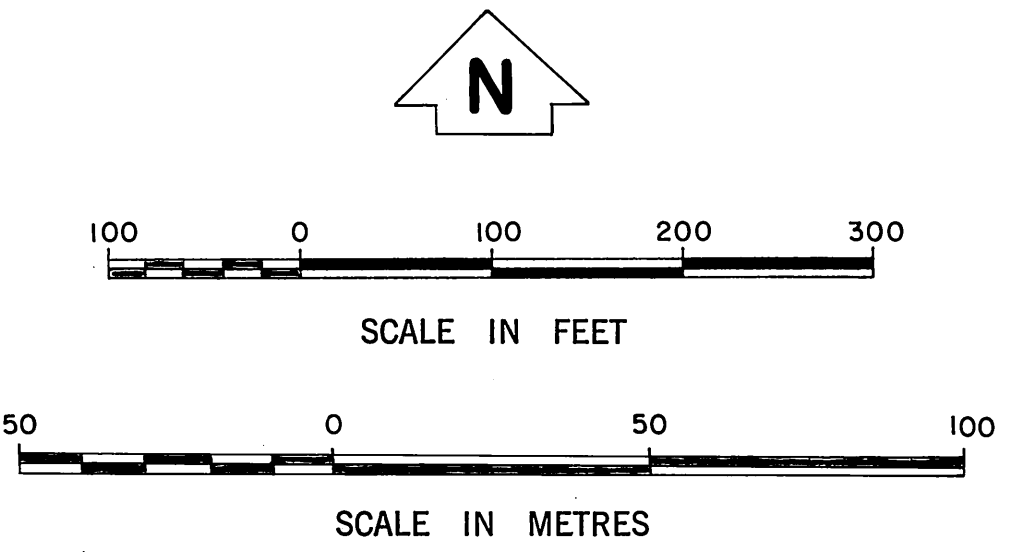
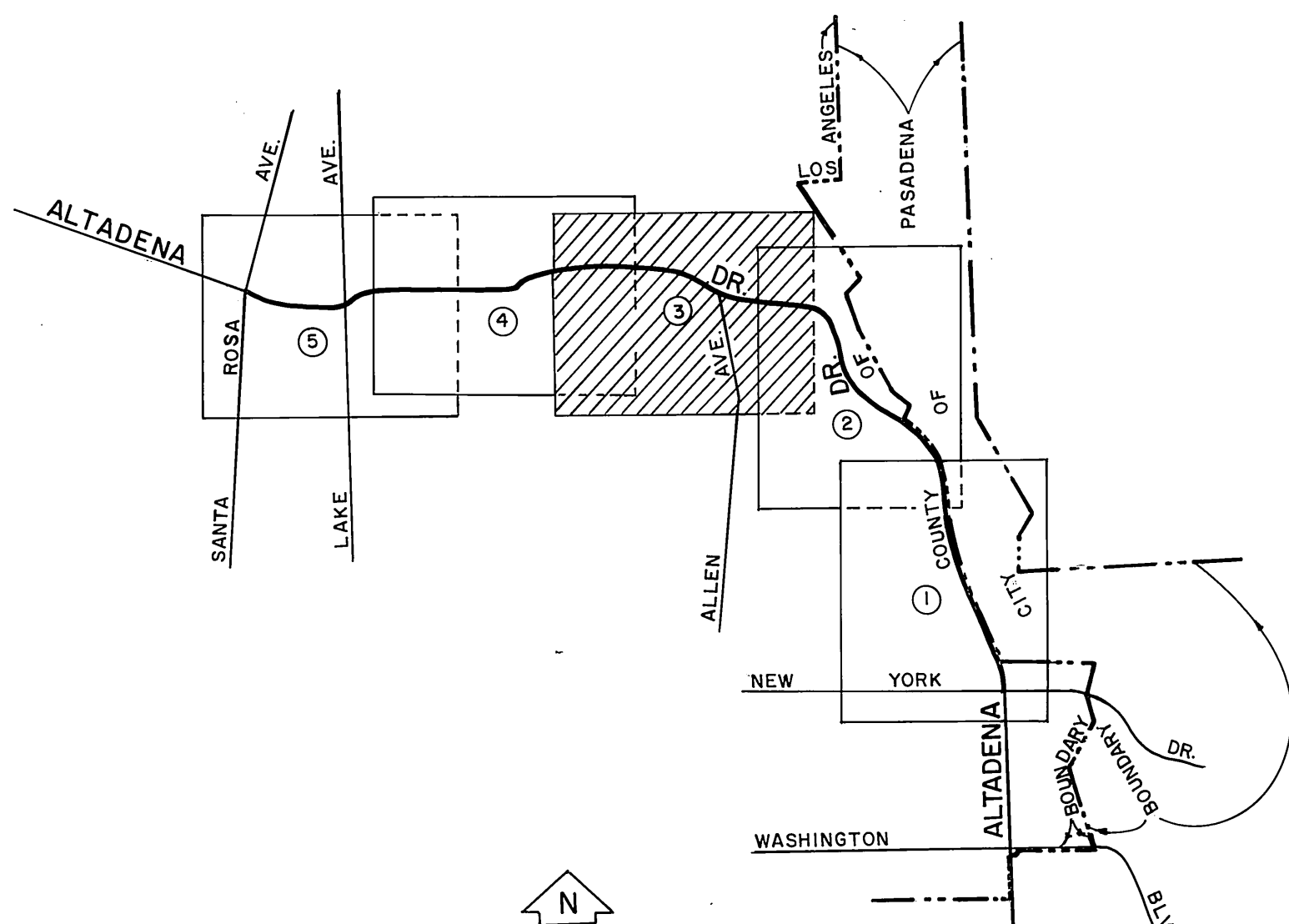
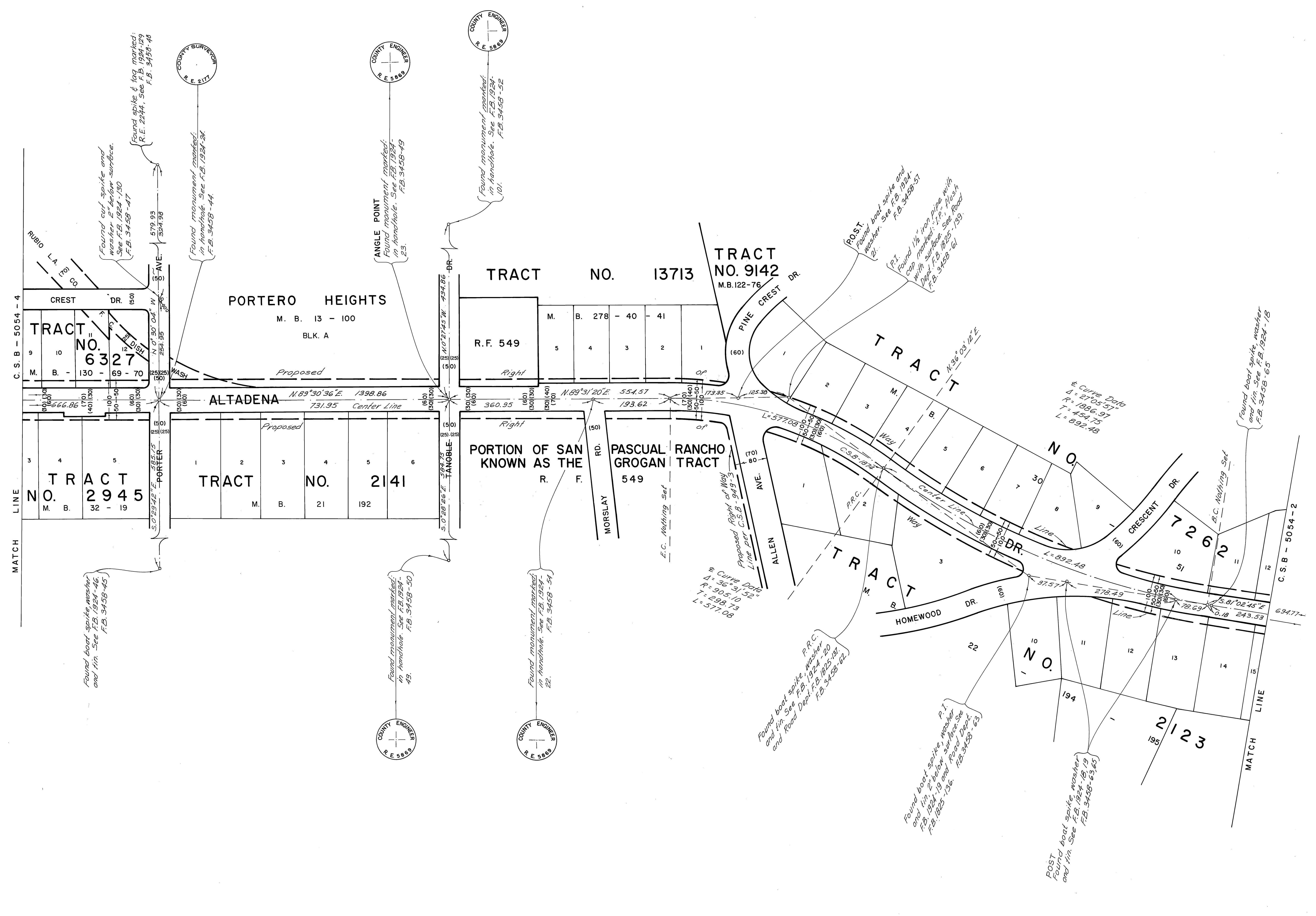
DETAIL "A"
Not To Scale



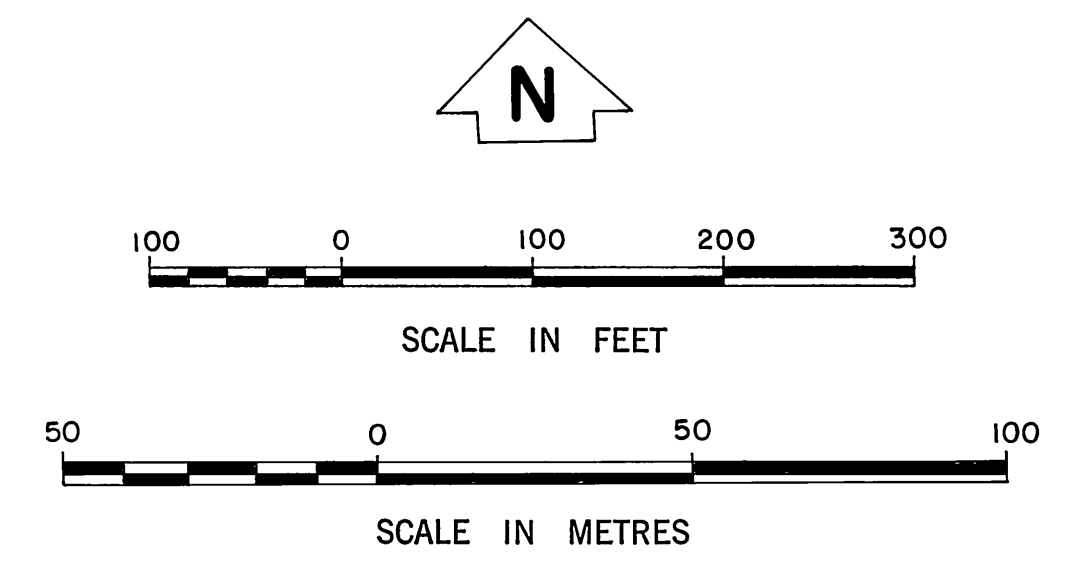
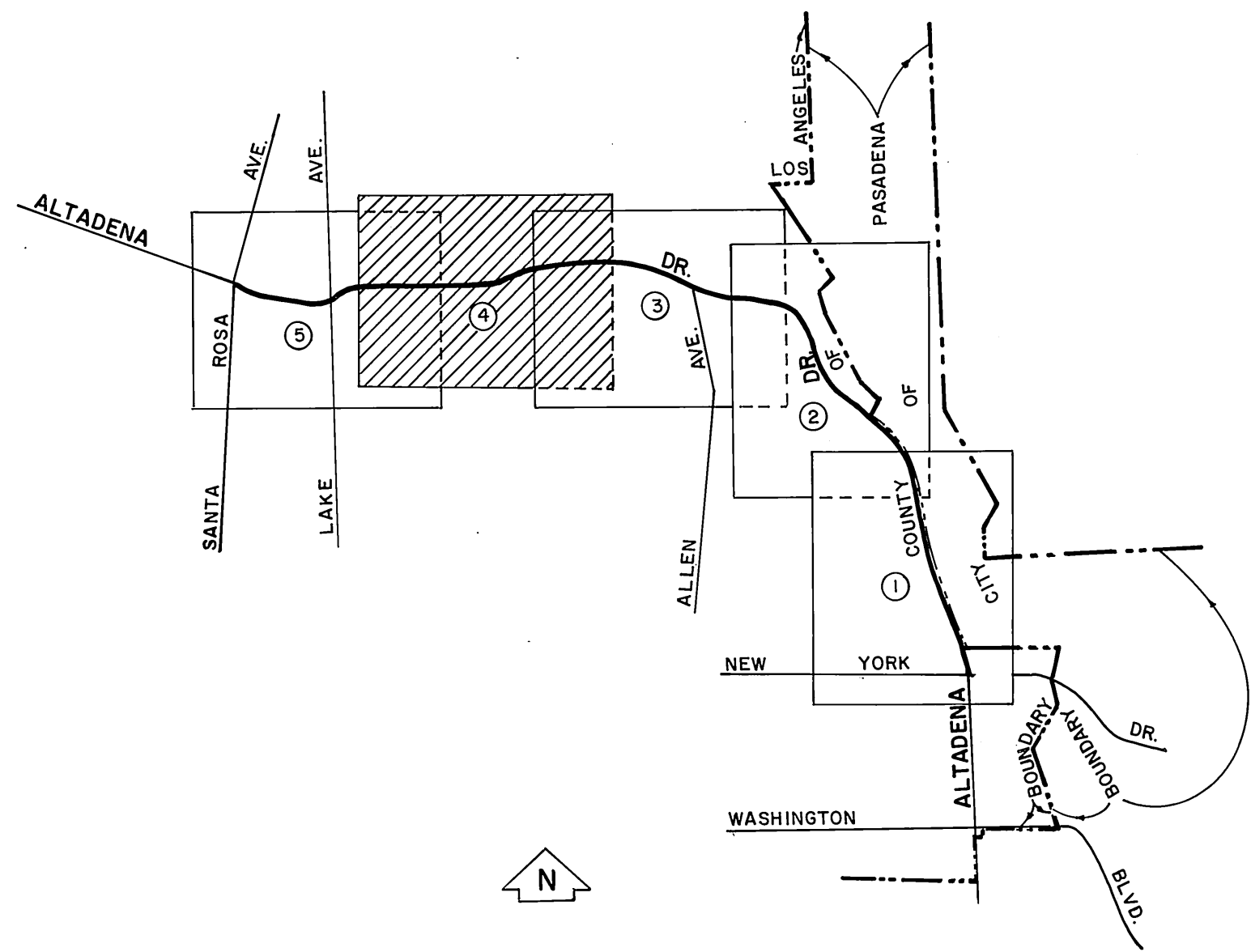
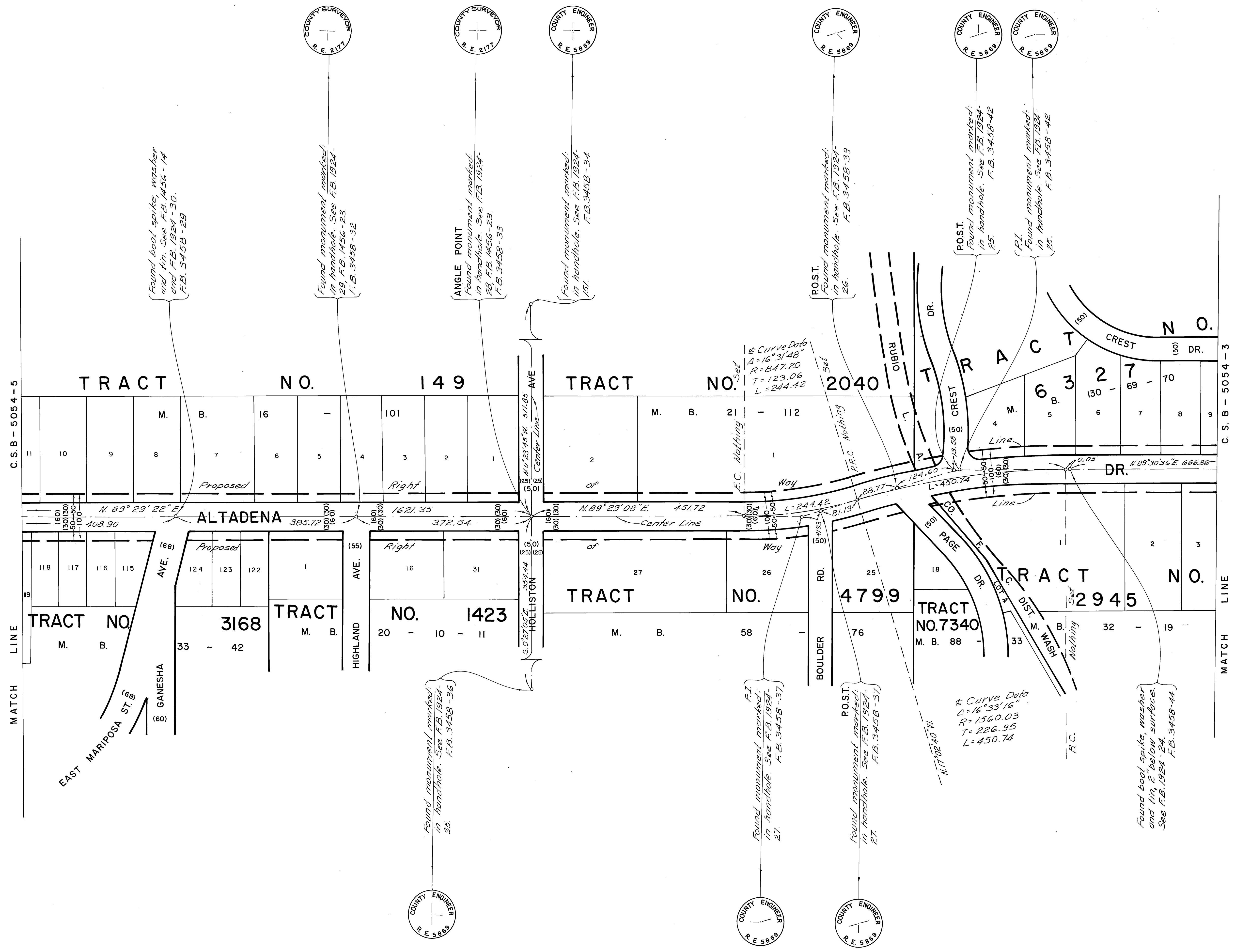
INDEX MAP
NOT TO SCALE



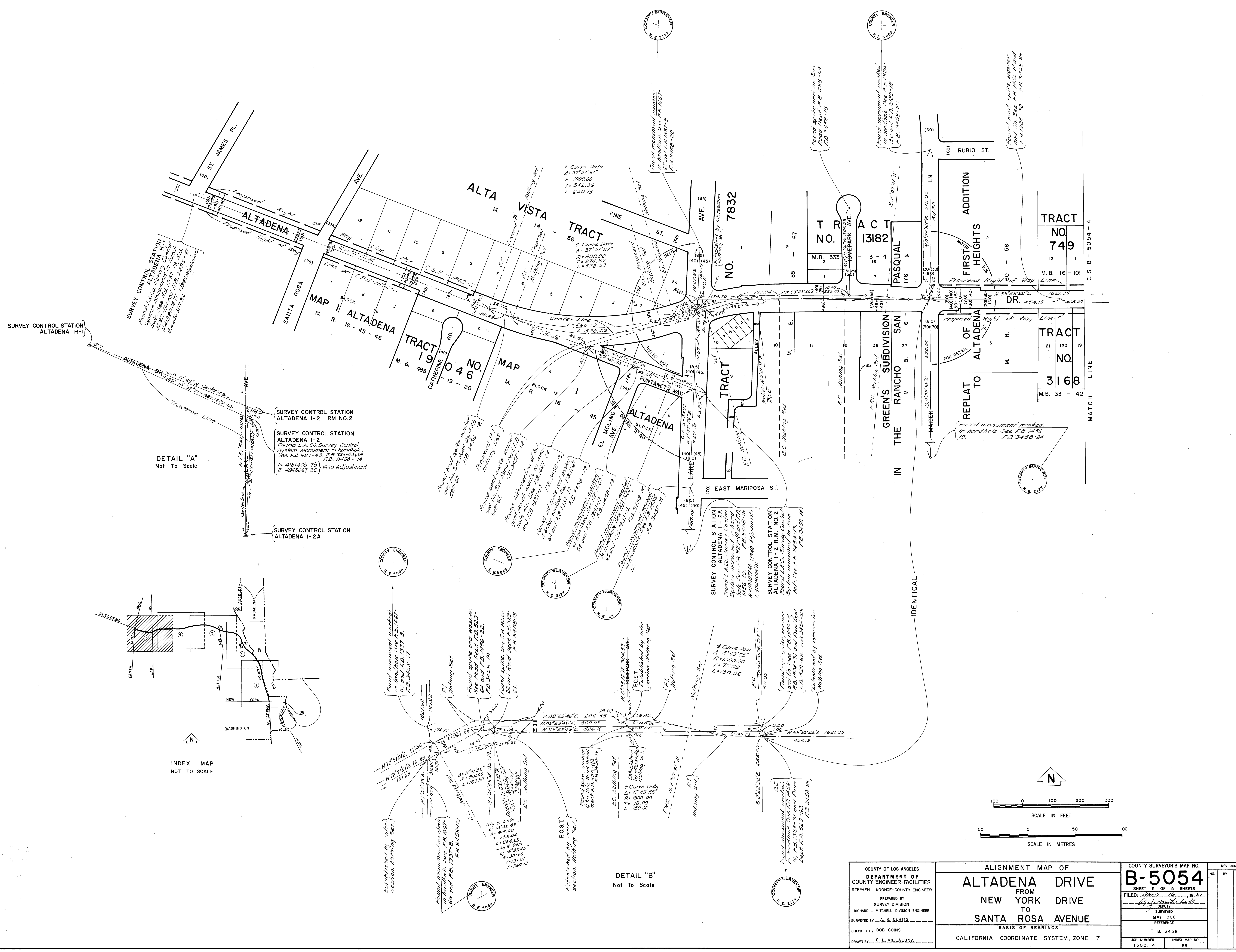
COUNTY OF LOS ANGELES DEPARTMENT OF COUNTY ENGINEER-FACILITIES STEPHEN J. KOONCE-COUNTY ENGINEER PREPARED BY SURVEY DIVISION RICHARD J. MITCHELL-DIVISION ENGINEER SURVEYED BY A. S. CURTIS CHECKED BY BOB GOINS DRAWN BY C. L. VILLALUNA	ALIGNMENT MAP OF ALTADENA DRIVE FROM NEW YORK DRIVE TO SANTA ROSA AVENUE BASIS OF BEARINGS CALIFORNIA COORDINATE SYSTEM, ZONE 7		COUNTY SURVEYOR'S MAP NO. B-5054 SHEET 2 OF 5 SHEETS FILED: April 16, 1968 R. J. Mitchell DEPUTY SURVEYOR MAY 1968 REFERENCE F. B. 3458	REVISION NO. BY DATE
			JOB NUMBER 1500.14	INDEX MAP NO. 88



COUNTY OF LOS ANGELES DEPARTMENT OF COUNTY ENGINEER-FACILITIES STEPHEN J. KOONCE-COUNTY ENGINEER PREPARED BY SURVEY DIVISION RICHARD J. MITCHELL-DIVISION ENGINEER SURVEYED BY A. S. CURTIS CHECKED BY BOB GOINS DRAWN BY C. L. VILLALUNA	ALIGNMENT MAP OF ALTADENA DRIVE FROM NEW YORK DRIVE TO SANTA ROSA AVENUE BASIS OF BEARINGS CALIFORNIA COORDINATE SYSTEM, ZONE 7		COUNTY SURVEYOR'S MAP NO. B-5054 SHEET 3 OF 5 SHEETS FILED: <i>[Signature]</i> 16 1981 COUNTY ENGINEER SURVEYED MAY 1968 REFERENCE F. B. 3458	REVISION NO. BY DATE
	JOB NUMBER 1500.14		INDEX MAP NO. 88	

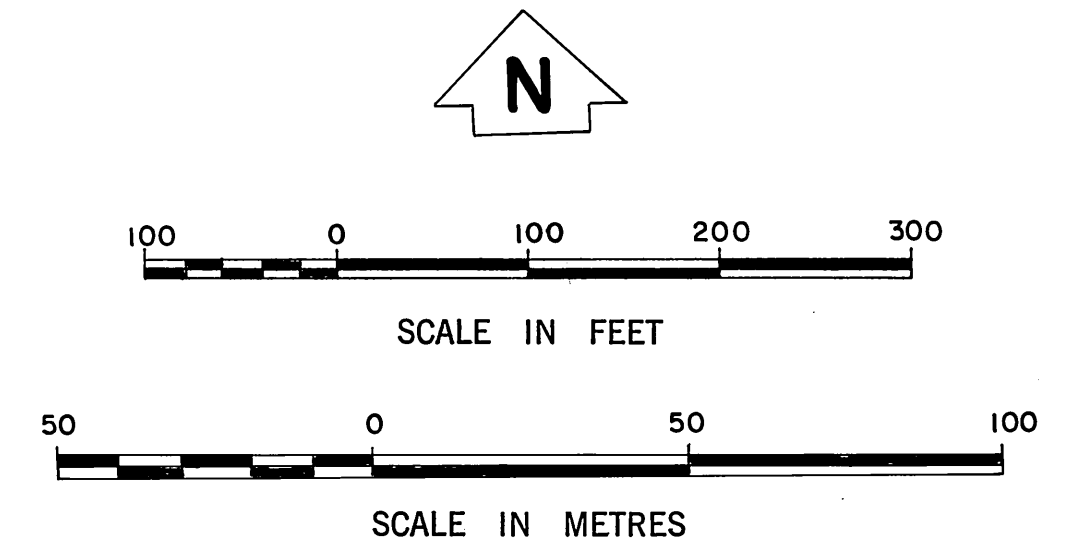
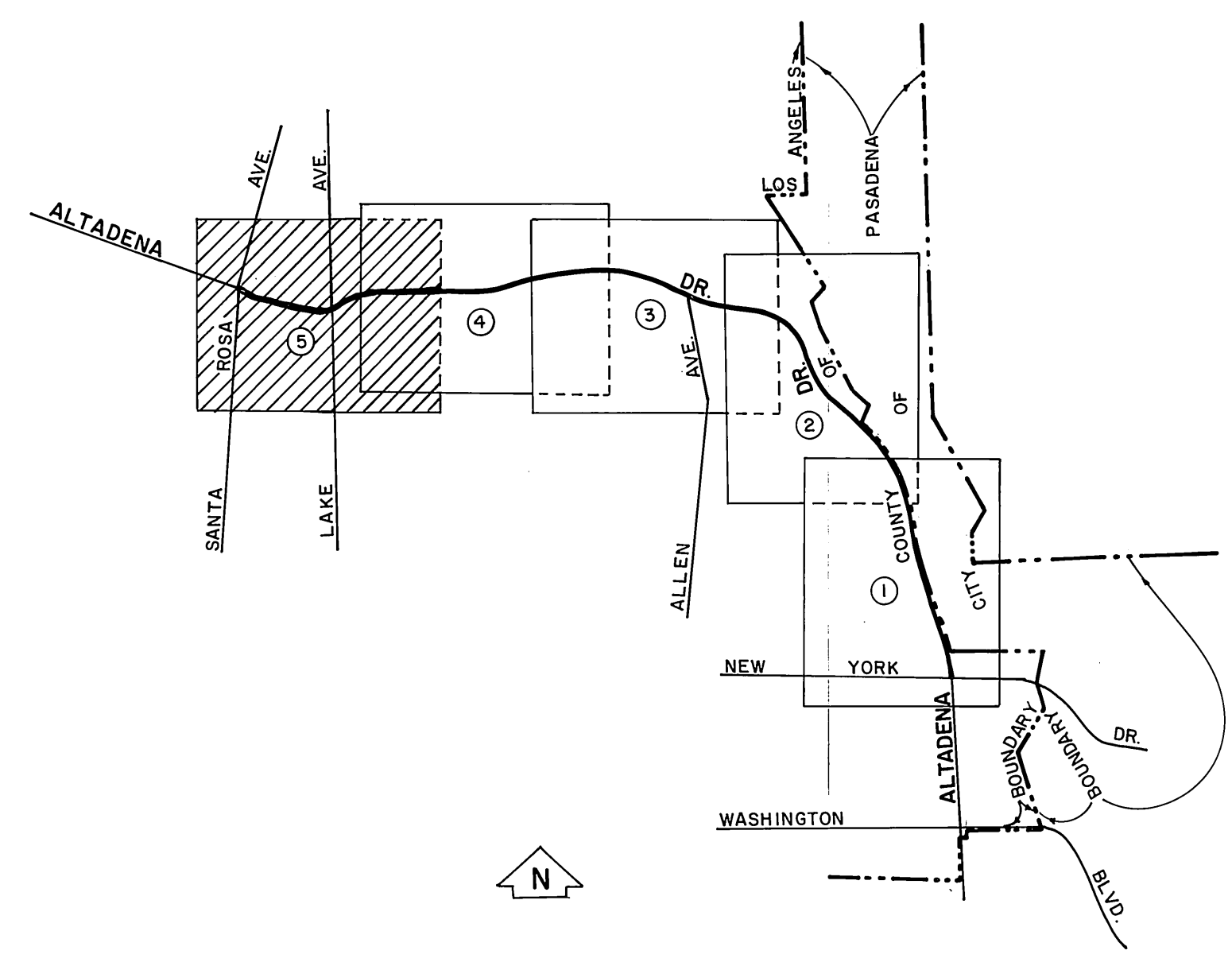


COUNTY OF LOS ANGELES DEPARTMENT OF COUNTY ENGINEER-FACILITIES STEPHEN J. KOONCE-COUNTY ENGINEER PREPARED BY SURVEY DIVISION RICHARD J. MITCHELL-DIVISION ENGINEER SURVEYED BY A. S. CURTIS CHECKED BY BOB GOINS DRAWN BY C. L. VILLALUNA	ALIGNMENT MAP OF ALTADENA DRIVE FROM NEW YORK DRIVE TO SANTA ROSA AVENUE BASIS OF BEARINGS CALIFORNIA COORDINATE SYSTEM, ZONE 7		COUNTY SURVEYOR'S MAP NO. B-5054 SHEET 4 OF 5 SHEETS FILED: <i>April 16 1968</i> <i>Richard J. Mitchell</i> DEPUTY SURVEYOR MAY 1968 REFERENCE F. B. 3458	REVISION NO. BY DATE
	JOB NUMBER 1500.14		INDEX MAP NO. 88	



DETAIL "A" Not To Scale

DETAIL "B" Not To Scale



COUNTY OF LOS ANGELES DEPARTMENT OF COUNTY ENGINEER-FACILITIES STEPHEN J. KOONCE-COUNTY ENGINEER PREPARED BY SURVEY DIVISION RICHARD J. MITCHELL-DIVISION ENGINEER SURVEYED BY A. S. CURTIS CHECKED BY BOB GOINS DRAWN BY C. L. VILLALUNA	ALIGNMENT MAP OF ALTADENA DRIVE FROM NEW YORK DRIVE TO SANTA ROSA AVENUE BASIS OF BEARINGS CALIFORNIA COORDINATE SYSTEM, ZONE 7		COUNTY SURVEYOR'S MAP NO. B-5054 SHEET 5 OF 5 SHEETS FILED: <i>April 16, 1968</i> COUNTY ENGINEER	REVISION NO. BY DATE	
			SURVEYED MAY 1968 REFERENCE F. B. 3458		
			JOB NUMBER 1500.14	INDEX MAP NO. 88	