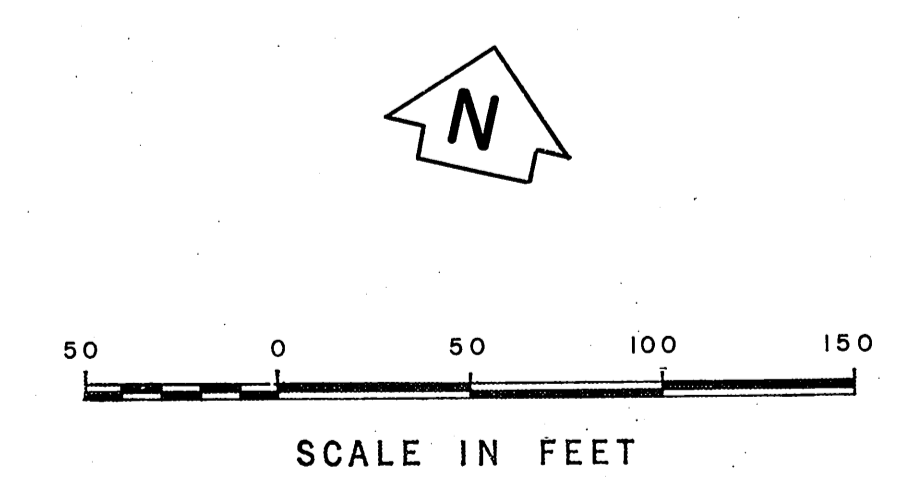
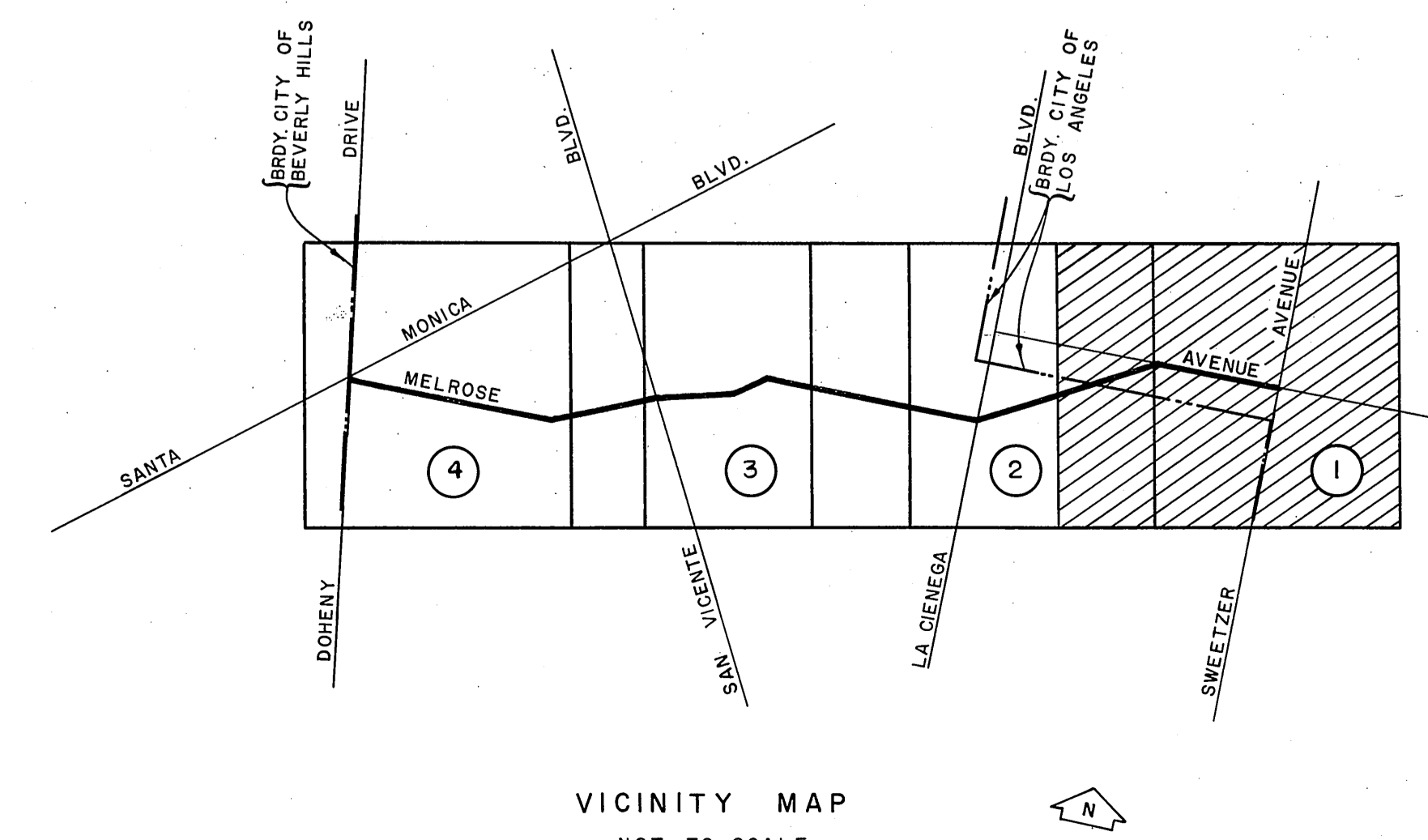
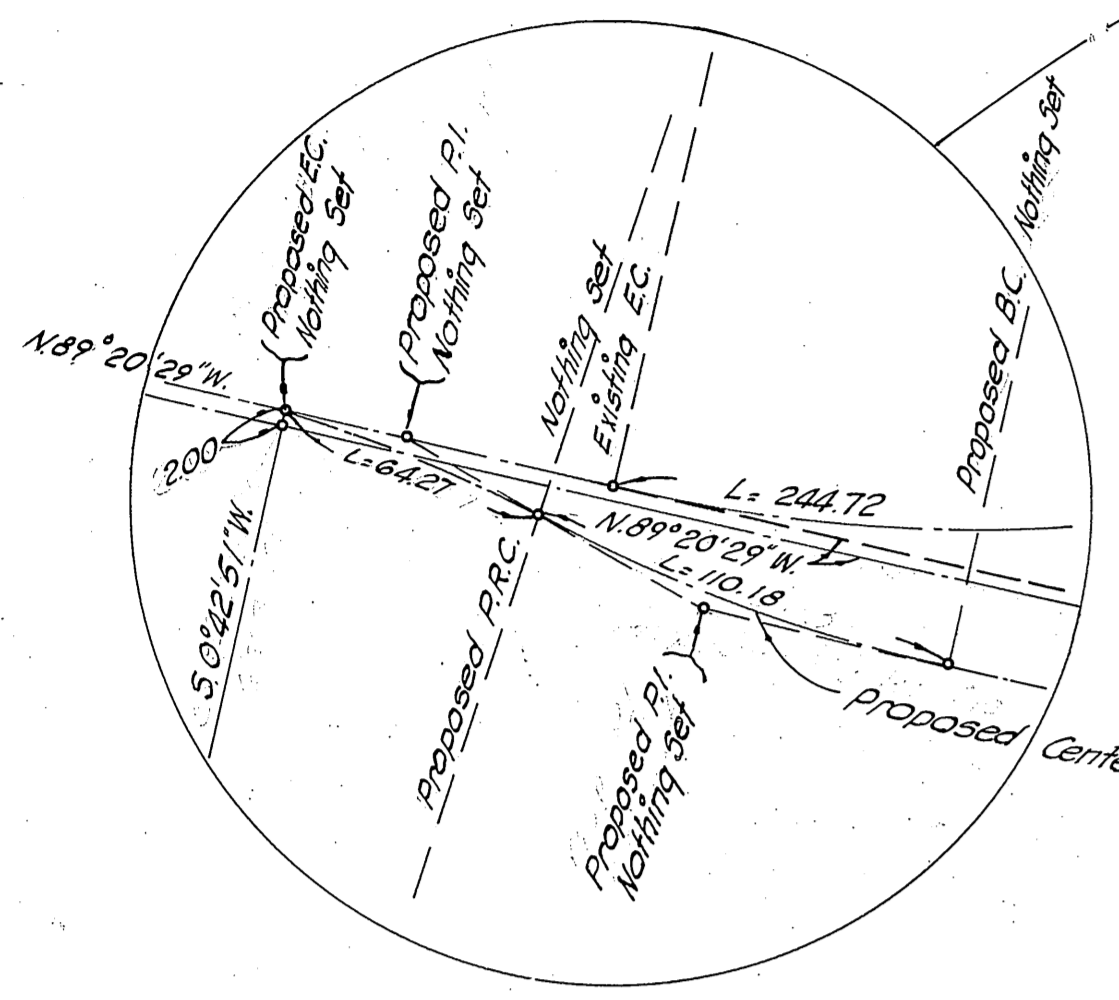
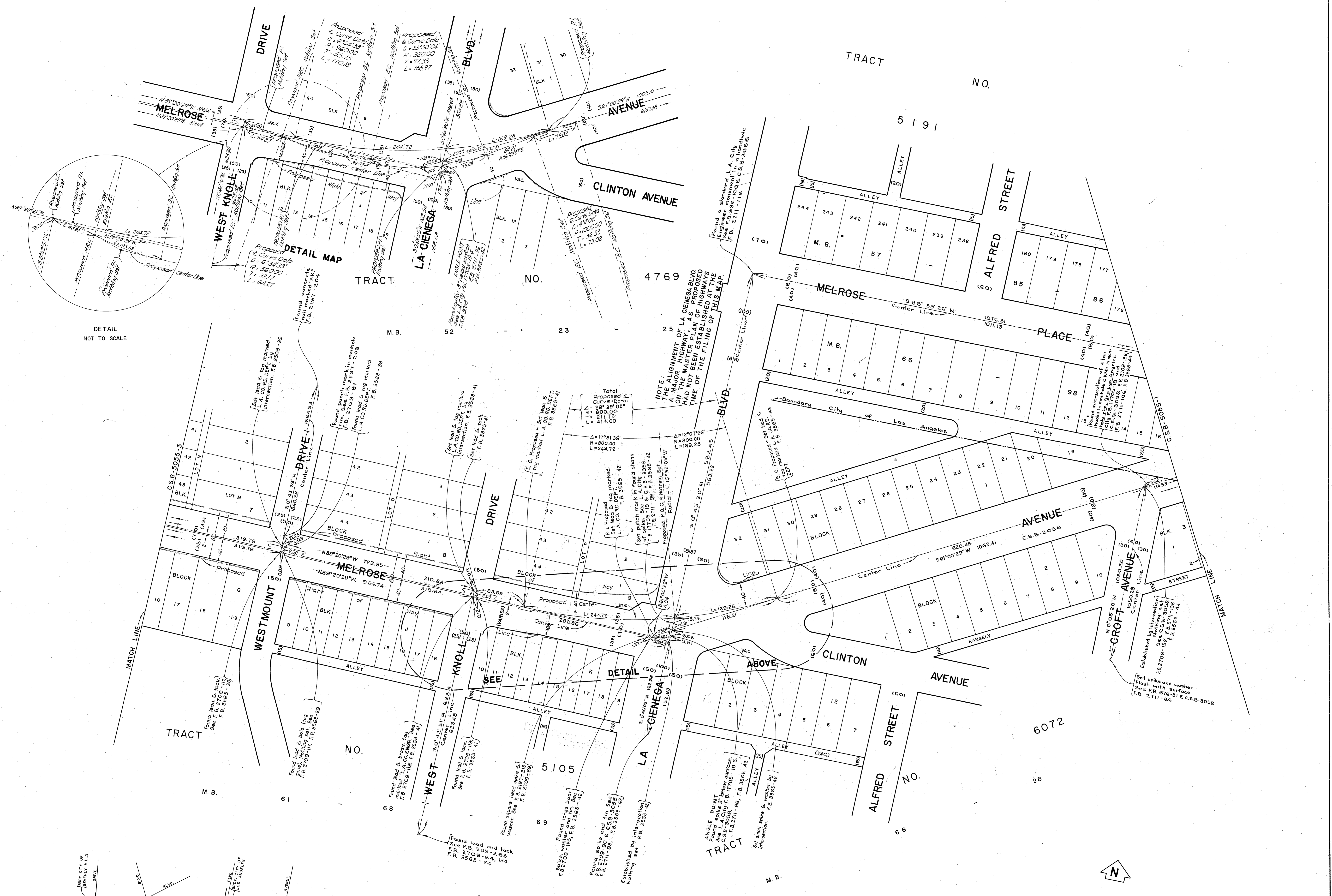


- REVISIONS:
- ① Proposed alignment added from Kings Rd to Robertson Blvd See I.E.C. min. Dec. 11, 1969 and June 23, 1970.
 - ② Proposed alignment revised from Kings Rd. to Robertson Blvd. See I.E.C. min. Apr. 23, 1976.
 - ③ Cadastral Data Revised.



COUNTY OF LOS ANGELES DEPARTMENT OF COUNTY ENGINEER JOHN A. LAMBIE - COUNTY ENGINEER PREPARED BY SURVEY DIVISION C. E. BRUNTY - DIVISION ENGINEER E. F. MANLEY JR. SURVEYED BY - W. A. RICHARDS CHECKED BY - C. RUBENACKER D. SAPPILL DRAWN BY - H. H. FONG R. R. SHEAN	ALIGNMENT MAP OF MELROSE AVENUE FROM SWEETZER AVENUE TO DOHENY DRIVE		COUNTY SURVEYOR'S MAP NO. B-5055 SHEET 1 OF 4 SHEETS FILED: 9-27-1962 <i>Stan J. Cunningham</i> DEPUTY	REVISION NO. BY DATE ① SK 7-13-70 ② J.F.M. 1-13-77 ③ A.M. 3-6-78
	BASIS OF BEARINGS CALIFORNIA COORDINATE SYSTEM, ZONE 7		SURVEYED MAY 1961 - DEC. 1964 REFERENCE F.B. 3565 F.B. 2640, F.B. 2709 F.B. 2711, F.B. 3218 JOB NUMBER 0097.73 INDEX MAP NO. 22	



DETAIL NOT TO SCALE

NOTE: THE ALIGNMENT OF LA CIENEGA BLVD ON MAJOR HIGHWAY PLANS HAS NOT BEEN ESTABLISHED AT THE TIME OF THE FILING OF THIS MAP.

ANGLE POINT
 Found spike in ground
 See F.B. 2709-117, F.B. 3565-39
 F.B. 2709-117, F.B. 3565-39

Found spike in ground
 See F.B. 2709-117, F.B. 3565-39
 F.B. 2709-117, F.B. 3565-39

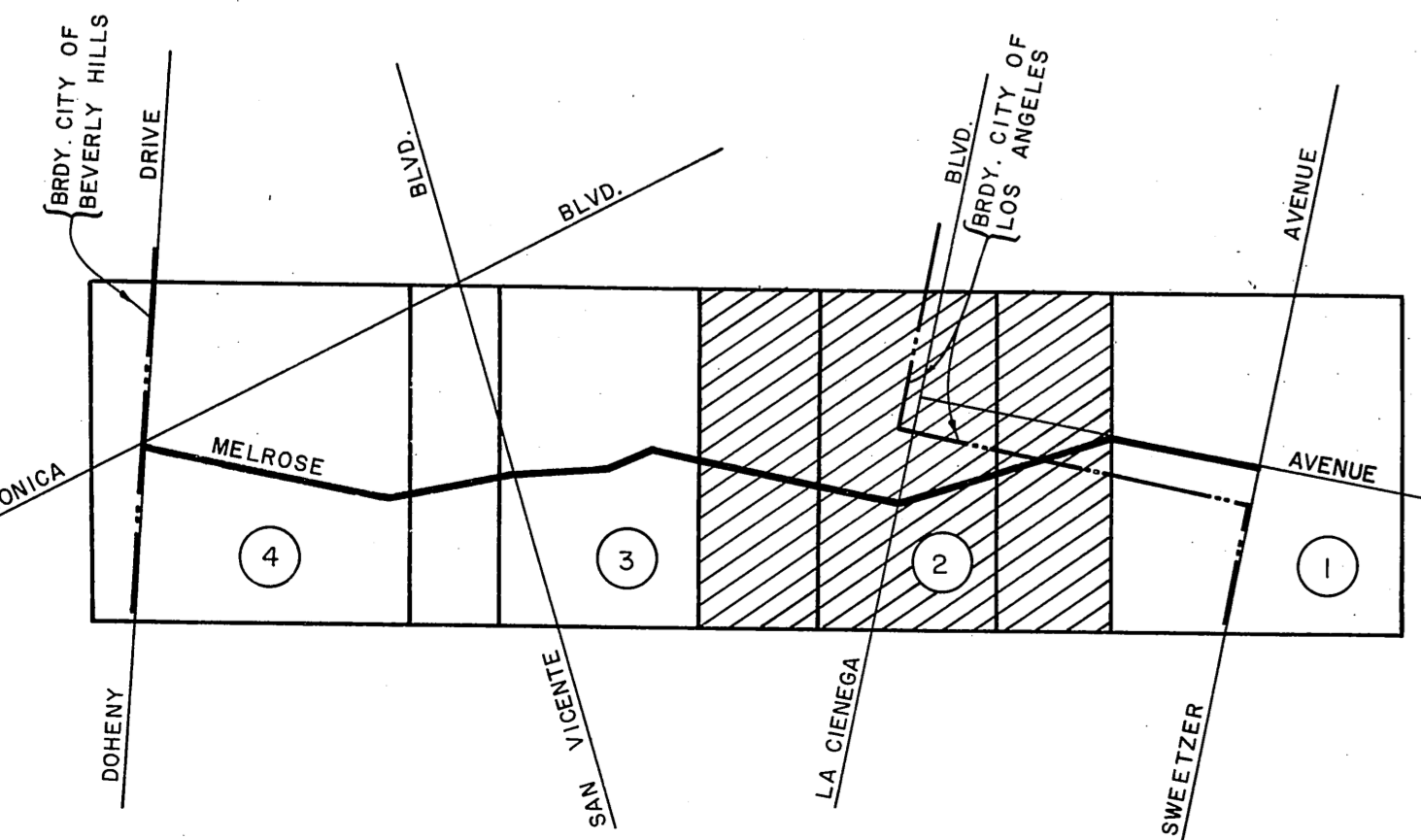
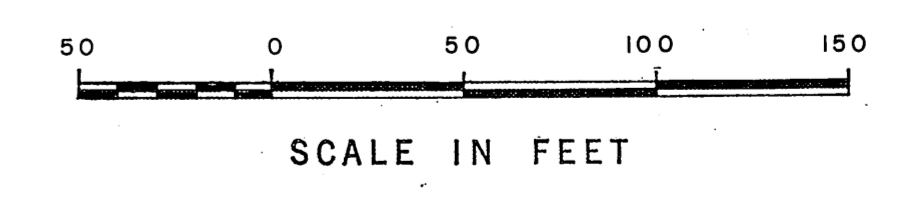
Found spike in ground
 See F.B. 2709-117, F.B. 3565-39
 F.B. 2709-117, F.B. 3565-39

Found spike in ground
 See F.B. 2709-117, F.B. 3565-39
 F.B. 2709-117, F.B. 3565-39

Found spike in ground
 See F.B. 2709-117, F.B. 3565-39
 F.B. 2709-117, F.B. 3565-39

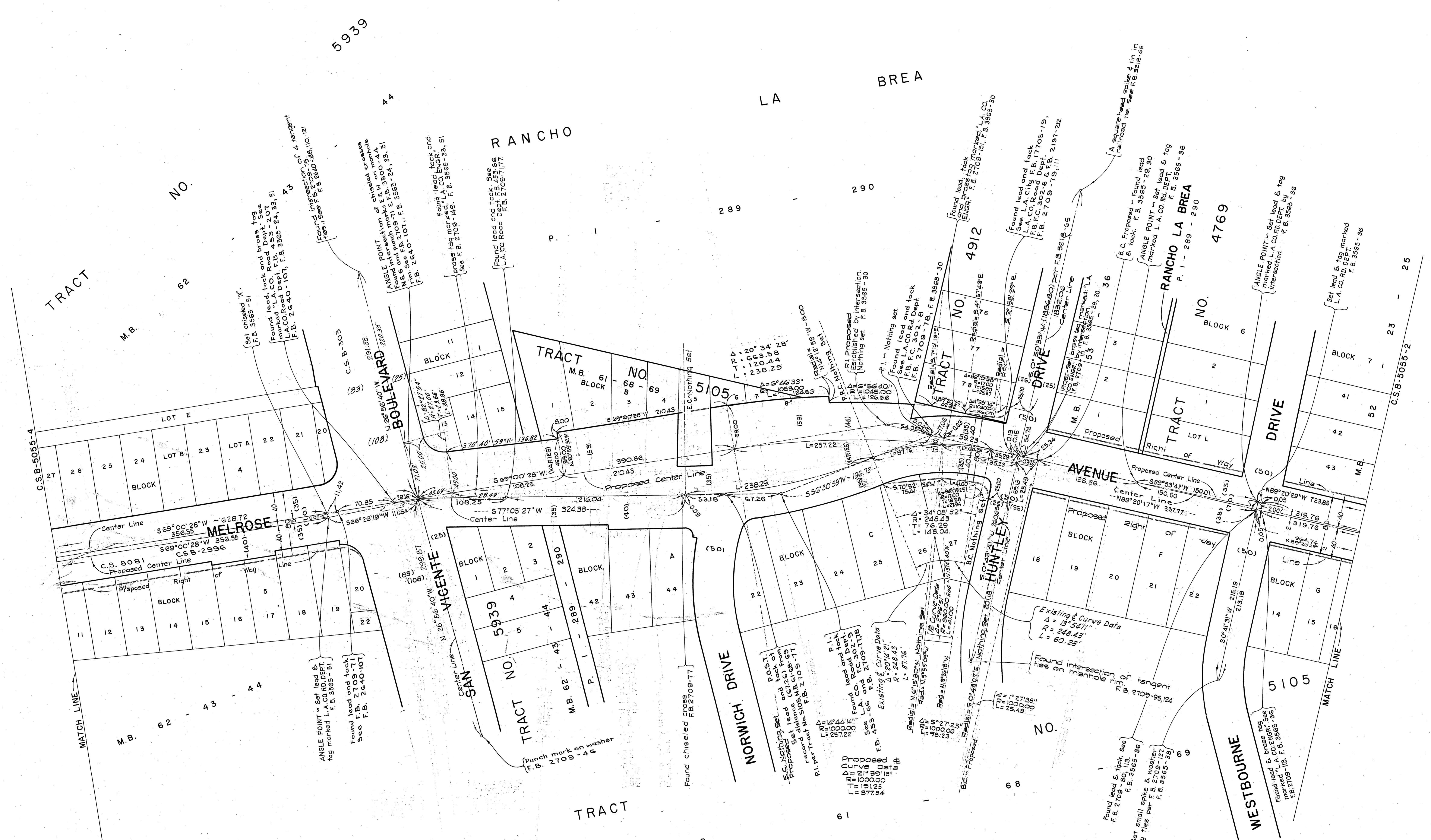
Found spike in ground
 See F.B. 2709-117, F.B. 3565-39
 F.B. 2709-117, F.B. 3565-39

- ① Proposed alignment added from Kings Rd. to Robertson Blvd. See I.E.C. min. Dec. 11, 1969 and June 25, 1970.
- ② Proposed alignment revised from Kings Rd. to Robertson Blvd. See I.E.C. min. Apr. 23, 1976.
- ③ Proposed alignment added from La Cienega Blvd. to Westmount Dr. See I.E.C. min. Aug. 9, 1977.
- ④ Proposed alignment revised from Huntley Dr. to La Cienega Blvd. Aug. 5, 1981.

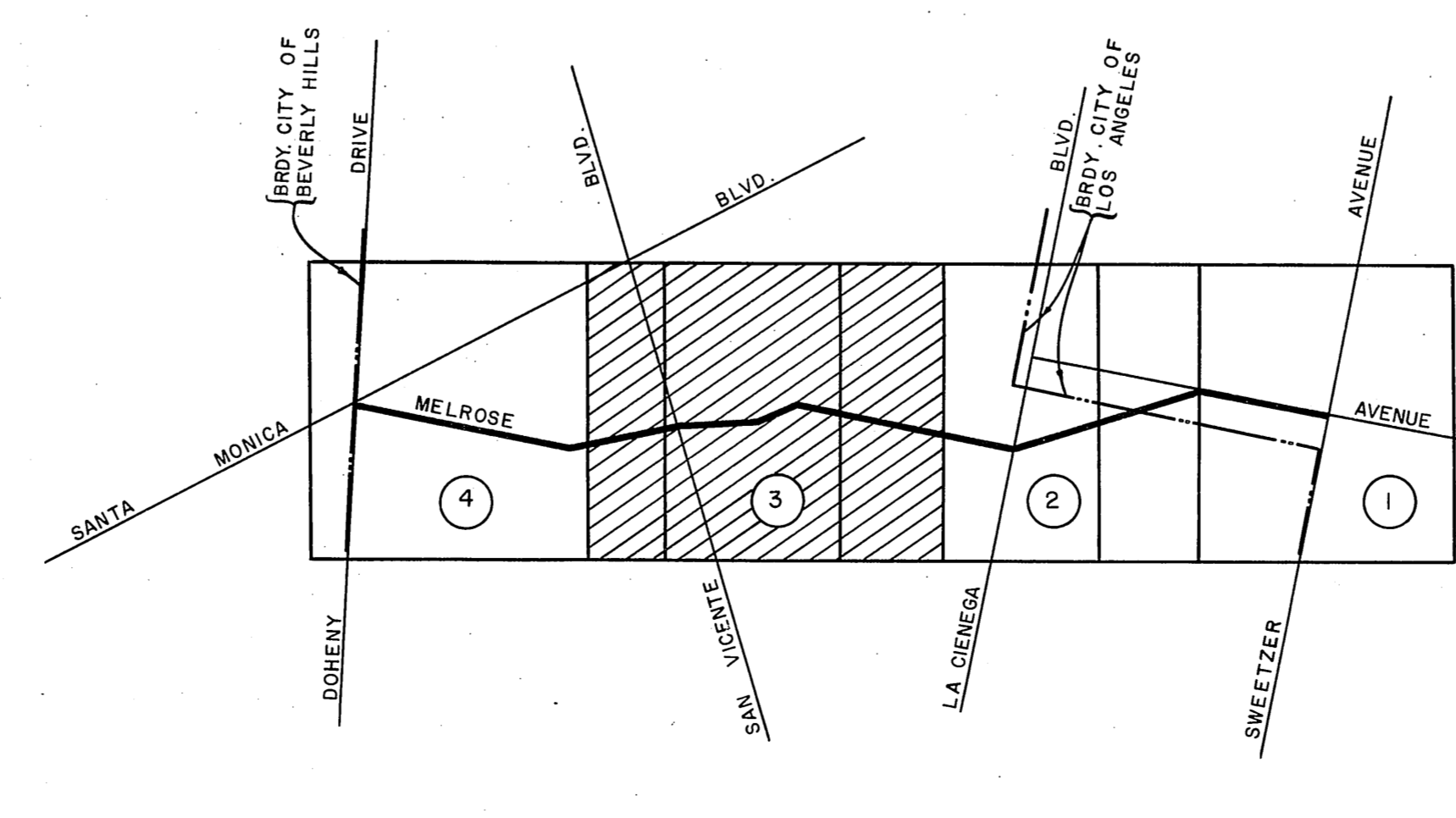


VICINITY MAP NOT TO SCALE

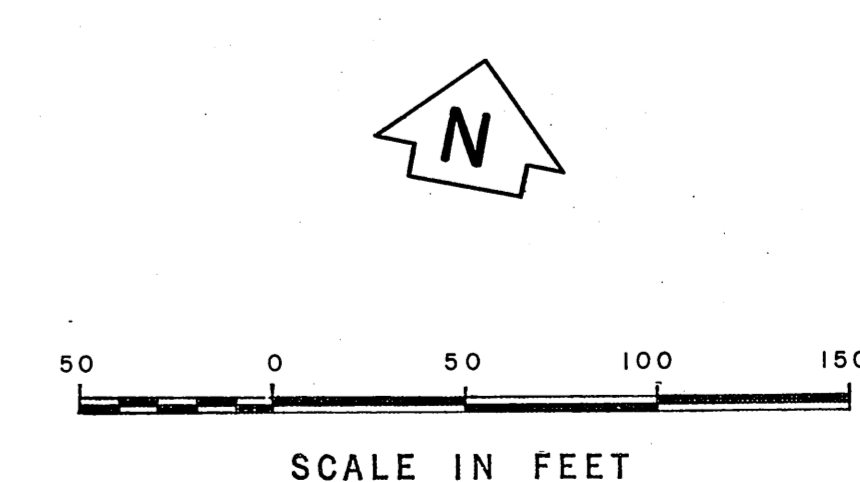
COUNTY OF LOS ANGELES DEPARTMENT OF COUNTY ENGINEER JOHN A. LAMBIE - COUNTY ENGINEER PREPARED BY SURVEY DIVISION C. E. BRUNTY - DIVISION ENGINEER E. T. MARNEY JR. SURVEYED BY W. A. RICHARDS C. RUBENACKER D. SAPPILL CHECKED BY H. H. F. DONG R. R. SHEAN DRAWN BY	ALIGNMENT MAP OF MELROSE AVENUE FROM SWEETZER AVENUE TO DOHENY DRIVE		COUNTY SURVEYOR'S MAP NO. B-5055 SHEET 2 OF 4 SHEETS FILED <i>Sergio S. [Signature]</i> DEPUTY	REVISION NO. BY DATE 1-19-77 SK 7-19-77 1-19-77 J.F.M. 1-19-77 8-6-77 F.N. 8-6-77 8-9-81 A.M. 8-9-81
	BASIS OF BEARINGS CALIFORNIA COORDINATE SYSTEM, ZONE 7			SURVEYED MAY 1981 - D.E.C. 1984 REFERENCE F.B. 3565 F.B. 2640, F.B. 2709 F.B. 2711, F.B. 3218 JOB NUMBER 0097.73 INDEX MAP NO. 22



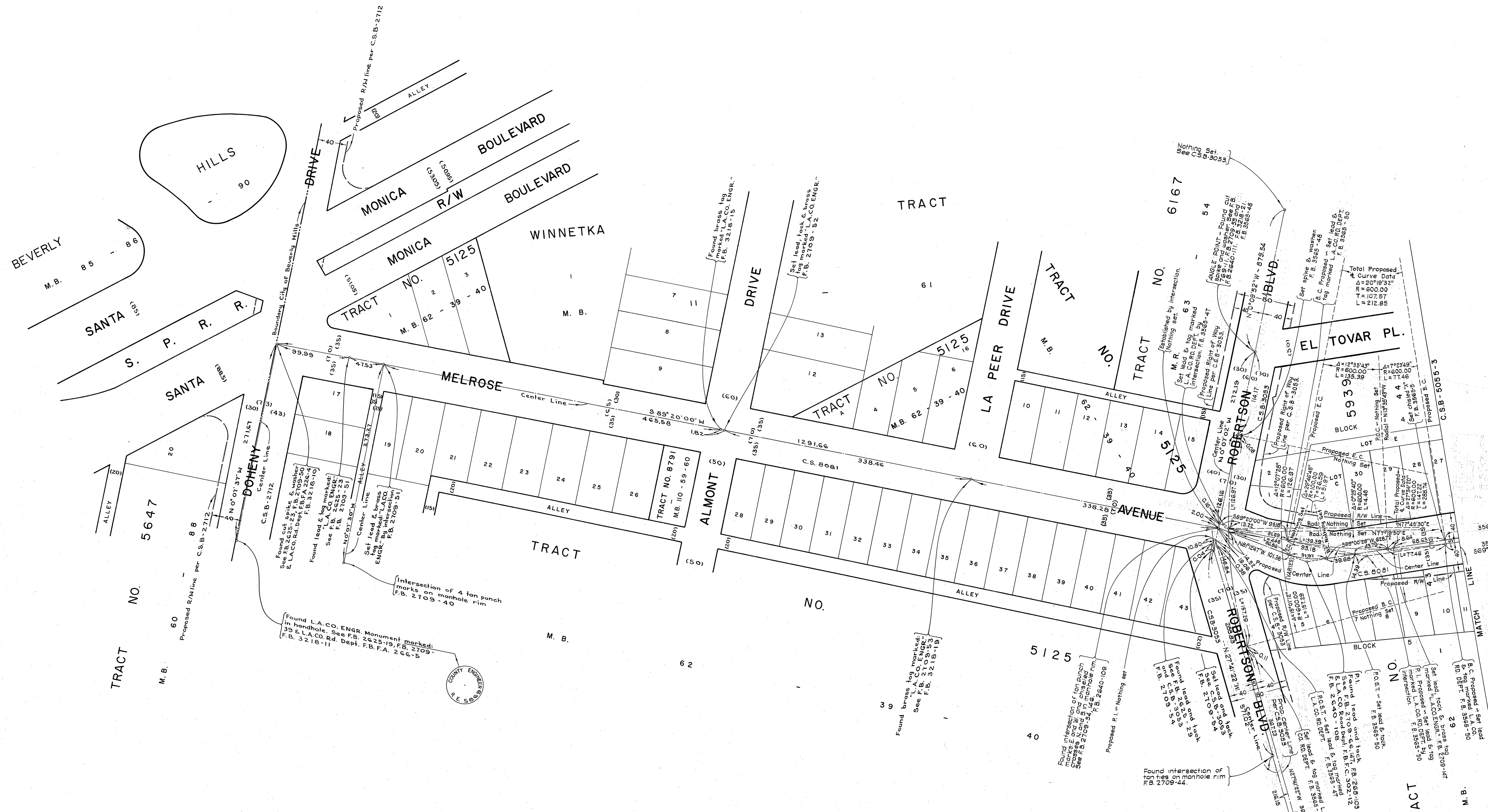
- ① Proposed alignment added from Kings Rd. to Robertson Blvd. See I.E.C. min. Dec. 11, 1969 and June 23, 1970.
- ② Proposed alignment revised from Huntley Dr. to San Vicente Blvd. See I.E.C. min. Oct. 26, 1972.
- ③ Proposed alignment of Santa Vicente Blvd. corrected.
- ④ Proposed alignment revised from Kings Rd. to Robertson Blvd. See I.E.C. min. Apr. 23, 1976.
- ⑤ Proposed alignment revised from Huntley Dr. to La Cienega Blvd. Aug. 5, 1981.



VICINITY MAP NOT TO SCALE



COUNTY OF LOS ANGELES DEPARTMENT OF COUNTY ENGINEER JOHN A. LAMBIE, COUNTY ENGINEER		ALIGNMENT MAP OF MELROSE AVENUE FROM SWEETZER AVENUE DOHENY TO DRIVE BASIS OF BEARINGS CALIFORNIA COORDINATE SYSTEM, ZONE 7		COUNTY SURVEYOR'S MAP NO. B-5055 SHEET 3 OF 4 SHEETS FILED: <i>[Signature]</i> , 1981 <i>[Signature]</i> COUNTY ENGINEER		REVISION NO. BY DATE 1. J.A. 7-19-70 2. J.A. 7-29-70 3. J.A. 1-15-71 4. A.M. 6-9-81
PREPARED BY SURVEY DIVISION C. E. BRUNTY, DIVISION ENGINEER S. F. MANKEY JR. SURVEYED BY W. A. RICHARDS C. RUBENACKER D. SAPPPELL CHECKED BY H. H. F. DONG R. R. SHEAN DRAWN BY		SURVEYED MAY 1981 - DEC. 1984 REFERENCE F.B. 3368 F.B. 2640, F.B. 2709 F.B. 2711, F.B. 3218 JOB NUMBER 0097-73 INDEX MAP NO. 22				

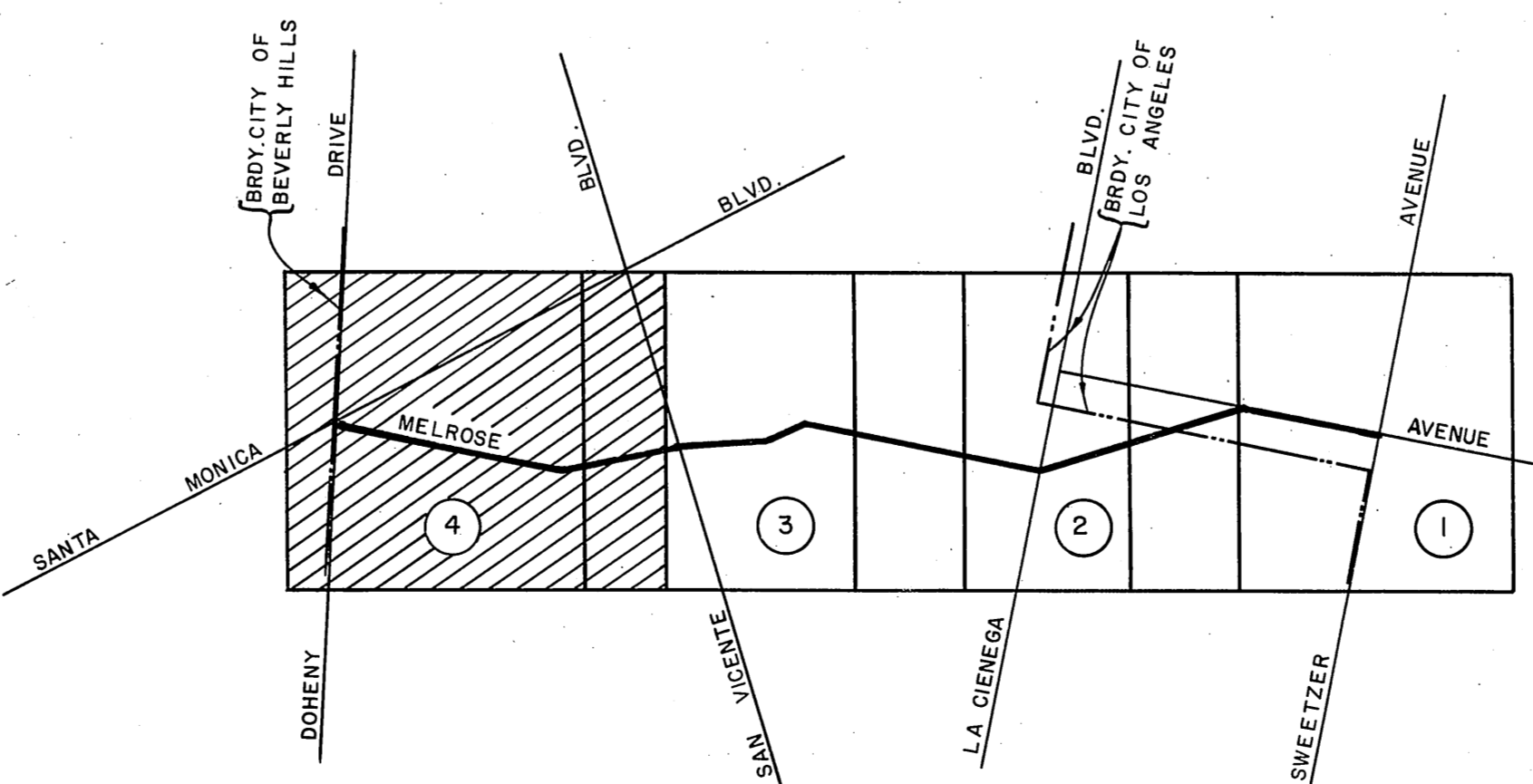


Found L.A. CO. ENGR. Monument marked:
39 in handhole. See F.B. 2425-19, F.B. 2709-
F.B. 3218-11 Dept. F.B.F.A. 266-5

Found L.A. CO. ENGR. Monument marked:
39 in handhole. See F.B. 2425-19, F.B. 2709-
F.B. 3218-11 Dept. F.B.F.A. 266-5

Found L.A. CO. ENGR. Monument marked:
39 in handhole. See F.B. 2425-19, F.B. 2709-
F.B. 3218-11 Dept. F.B.F.A. 266-5

- ⓐ Proposed alignment added from Kings Rd to Robertson Blvd See I.E.C. min Dec 11, 1969 and June 25, 1970.
- ⓑ Proposed alignment revised from Kings Rd. to Robertson Blvd. See I.E.C. min. Apr 23, 1976.



COUNTY OF LOS ANGELES DEPARTMENT OF COUNTY ENGINEER JOHN A. LAMBE - COUNTY ENGINEER PREPARED BY SURVEY DIVISION C. E. BRUNY - DIVISION ENGINEER E. T. WANKY JR. SURVEYED BY W. A. RICHARDS CHECKED BY C. RUBENACKER D. S. APPEL H. H. F. DONG R. R. SHEAN	ALIGNMENT MAP OF MELROSE AVENUE FROM SWEETZER AVENUE TO DOHENY DRIVE		COUNTY SURVEYOR'S MAP NO. B-5055 SHEET 4 OF 4 SHEETS FILED: <i>George J. P. ...</i> , 1962 DEPT. OF PUBLIC WORKS MAY 1961 - DEC 1964 REFERENCE F.B. 3365 F.B. 2640, F.B. 2709 F.B. 2711, F.B. 3218 JOB NUMBER 0097.73 INDEX MAP NO. 22
	BASIS OF BEARINGS CALIFORNIA COORDINATE SYSTEM, ZONE 7		REVISION NO. BY DATE 1 J.F.M. 7-15-77
	SCALE IN FEET 0 50 100 150		
	VICINITY MAP NOT TO SCALE		