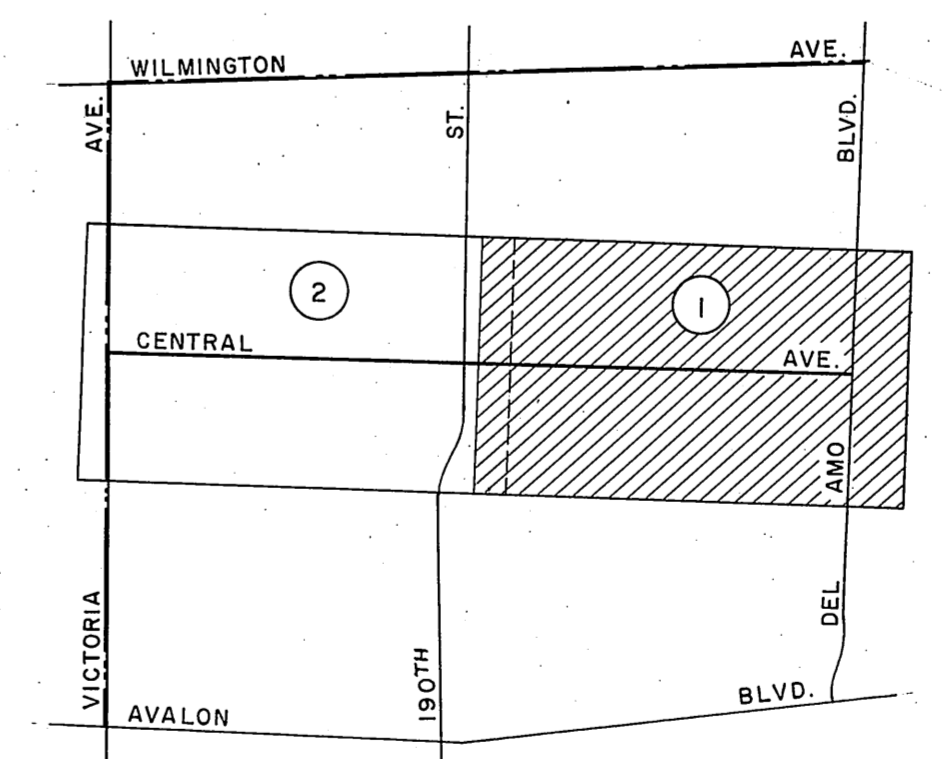
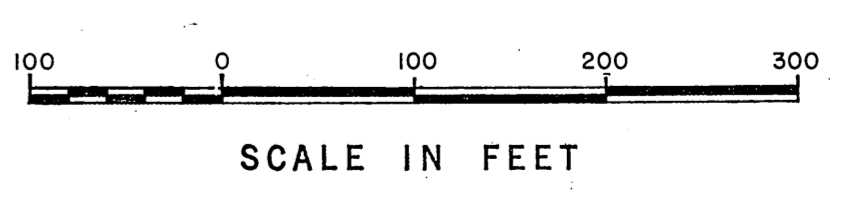


NOTE:-
 THIS SURVEY WAS CONDUCTED TO ESTABLISH AN ALIGNMENT FOR CENTRAL AVENUE. DUE TO INCORPORATION, THIS RESPONSIBILITY NOW LIES WITH THE CITY OF CARSON. THIS MAP IS FILED FOR SURVEY INFORMATION ONLY.



VICINITY MAP
 NOT TO SCALE



(SURVEY CONTROL STATION
 COMPTON H-7.
 Found L. A. Co. Survey Control
 System Monument in hand-
 hole. F. B. 3282-26.

Found lead & brass tag
 marked "L. A. CO. ENGR."
 3" below surface. See
 F. B. 442-258, F. B. 3282-24.

(SURVEY CONTROL STATION
 COMPTON G-7
 Set large boat spike, tin &
 washer marked "L. A. CO. ENGR."
 by ties per F. B. 325-59, 60.
 F. B. 3282-41.

Found County Surveyor's Mon-
 ument in hand hole.
 See F. B. 320-39, 44 &
 45.
 F. B. 442-253, F. B. 3282-7.

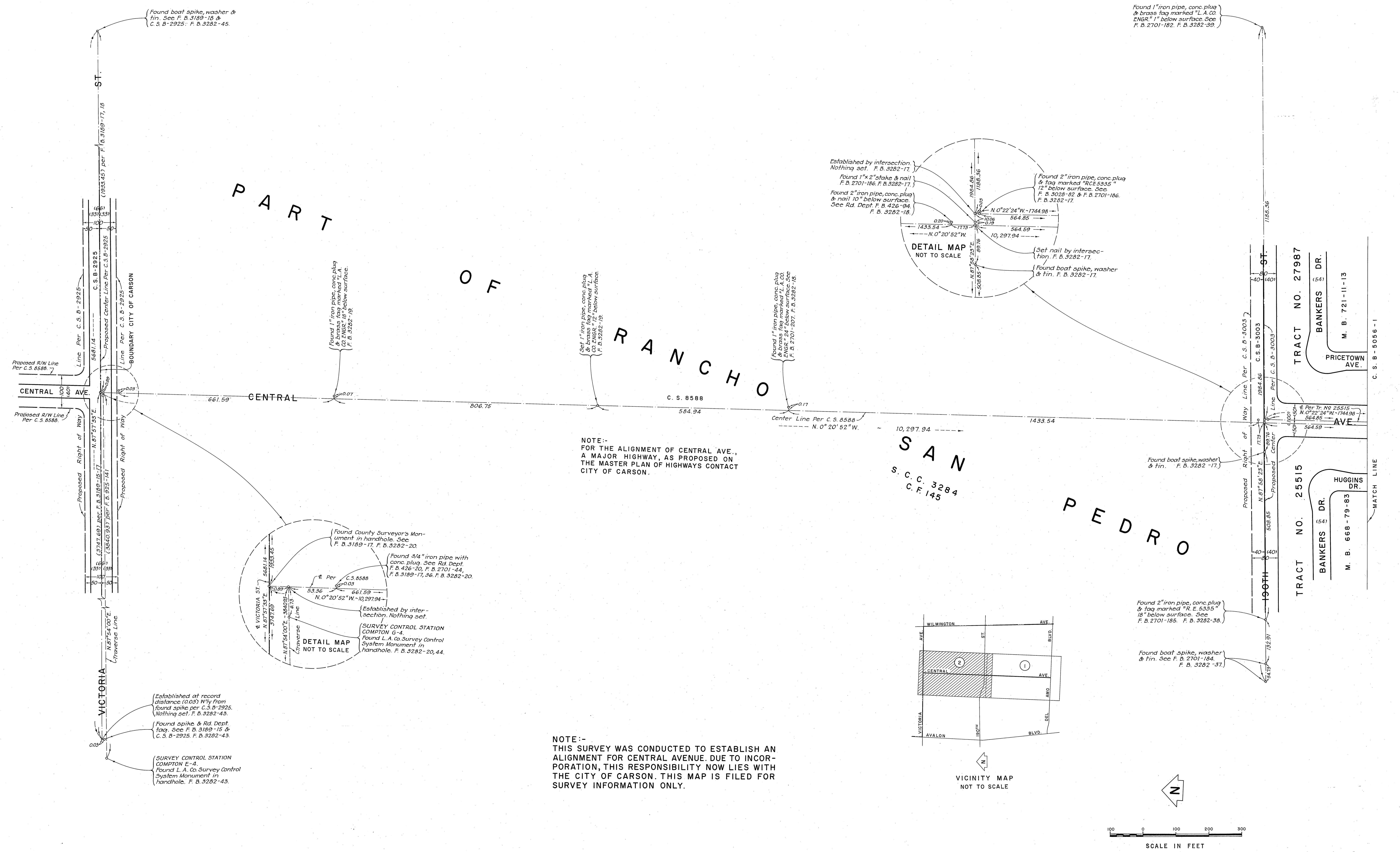
ANGLE POINT - CENTRAL AVE.
 Established by inter-
 section. Nothing set.
 F. B. 3282-8.

Established by inter-
 section. Nothing set.
 F. B. 3282-42.

Found boat spike & tin.
 See AG Dept. File No. 2242.
 F. B. 3282-9.

Found 1 1/2" iron pipe, conc. plug
 & tag marked "L. S. 2921" 12"
 below surface. F. B. 3282-25.

COUNTY OF LOS ANGELES DEPARTMENT OF COUNTY ENGINEER JOHN A. LAMBIE, COUNTY ENGINEER PREPARED BY SURVEY DIVISION C. E. BRUNTY, DIVISION ENGINEER SURVEYED BY J. H. BROWN CHECKED BY A. DART DRAWN BY M. HAMASU	MAP OF CENTRAL AVENUE FROM DEL AMO BOULEVARD TO VICTORIA STREET (SEE NOTE TO THE LEFT)		COUNTY SURVEYOR'S MAP NO. B-5056 SHEET 1 OF 2 SHEETS FILED: 8-15-1962 DEPUTY SURVEYED APR. TO JULY 1967 REFERENCE F. B. 3282-7-45	REVISION NO. BY DATE
	BASIS OF BEARINGS CALIFORNIA COORDINATE SYSTEM, ZONE 7		JOB NUMBER 0097.09	INDEX MAP NO. 26
			SURVEYED APR. TO JULY 1967	
			REFERENCE F. B. 3282-7-45	
			JOB NUMBER 0097.09	INDEX MAP NO. 26



NOTE:-
FOR THE ALIGNMENT OF CENTRAL AVE.,
A MAJOR HIGHWAY, AS PROPOSED ON
THE MASTER PLAN OF HIGHWAYS CONTACT
CITY OF CARSON.

NOTE:-
THIS SURVEY WAS CONDUCTED TO ESTABLISH AN
ALIGNMENT FOR CENTRAL AVENUE. DUE TO INCOR-
PORATION, THIS RESPONSIBILITY NOW LIES WITH
THE CITY OF CARSON. THIS MAP IS FILED FOR
SURVEY INFORMATION ONLY.

COUNTY OF LOS ANGELES DEPARTMENT OF COUNTY ENGINEER JOHN A. LAMBIE - COUNTY ENGINEER PREPARED BY SURVEY DIVISION C. E. BRUNTY - DIVISION ENGINEER SURVEYED BY J. H. BROWN CHECKED BY A. DART DRAWN BY M. HAMASU	MAP OF CENTRAL AVENUE FROM DEL AMO BOULEVARD TO VICTORIA STREET (SEE NOTE TO THE LEFT)		COUNTY SURVEYOR'S MAP NO. B-5056 SHEET 2 OF 2 SHEETS FILED <i>B-15</i> 1967 <i>Sam O. ...</i> APR. TO JULY 1967 REFERENCE F. B. 3282 - 7 - 45		REVISION NO. BY DATE
	BASIS OF BEARINGS CALIFORNIA COORDINATE SYSTEM, ZONE 7			JOB NUMBER 0097.09	
	INDEX MAP NO. 26				