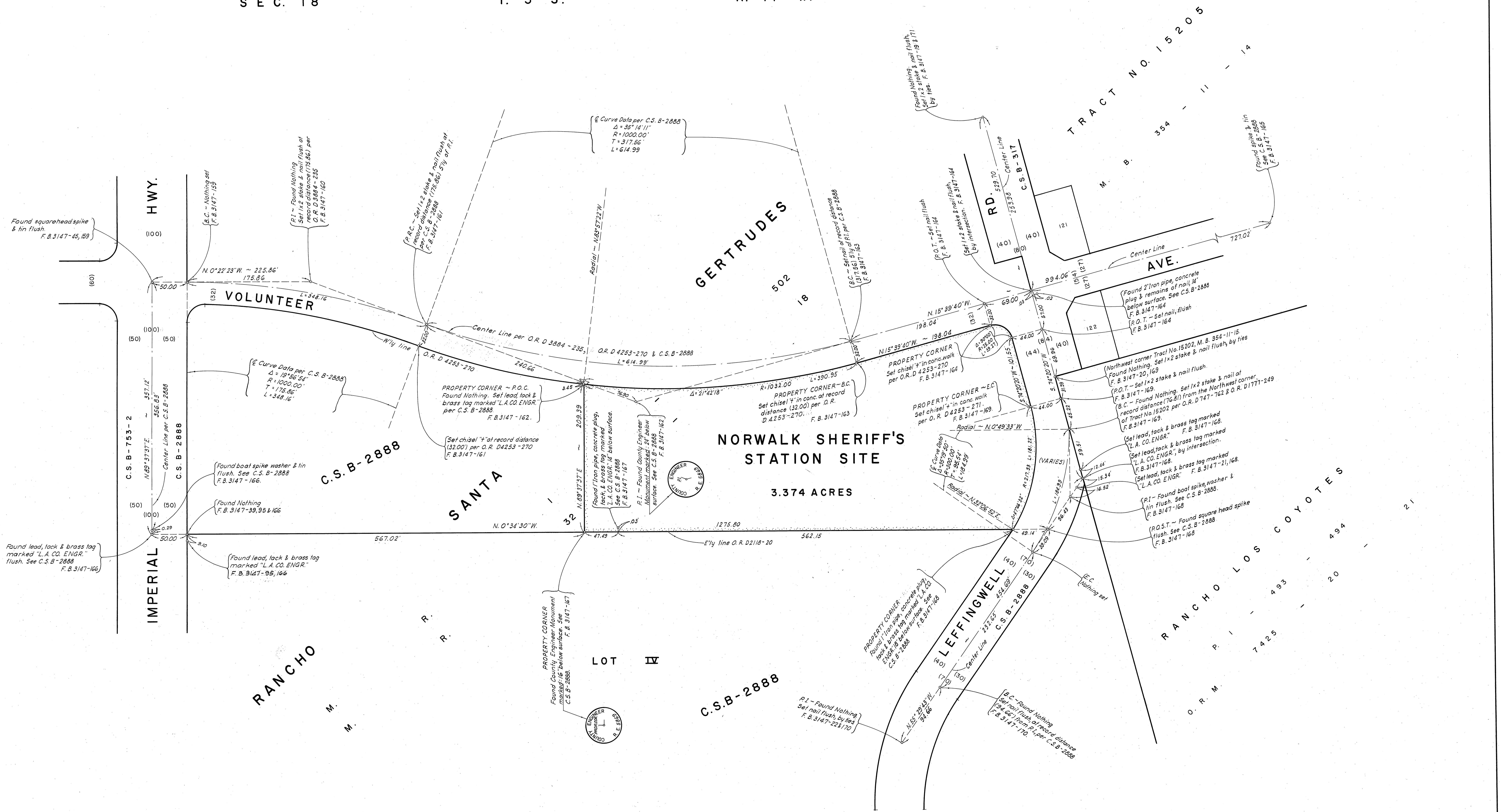


SEC. 18

T. 3 S.

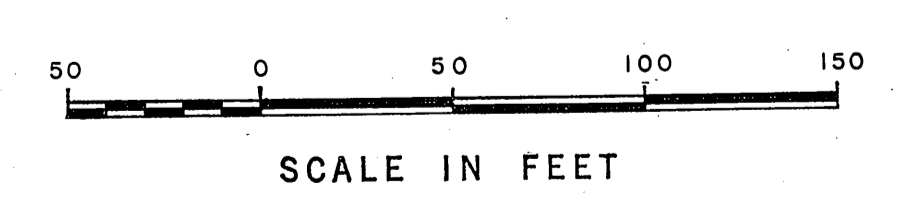
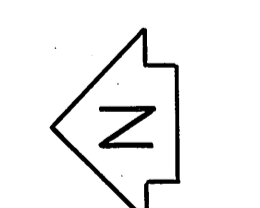
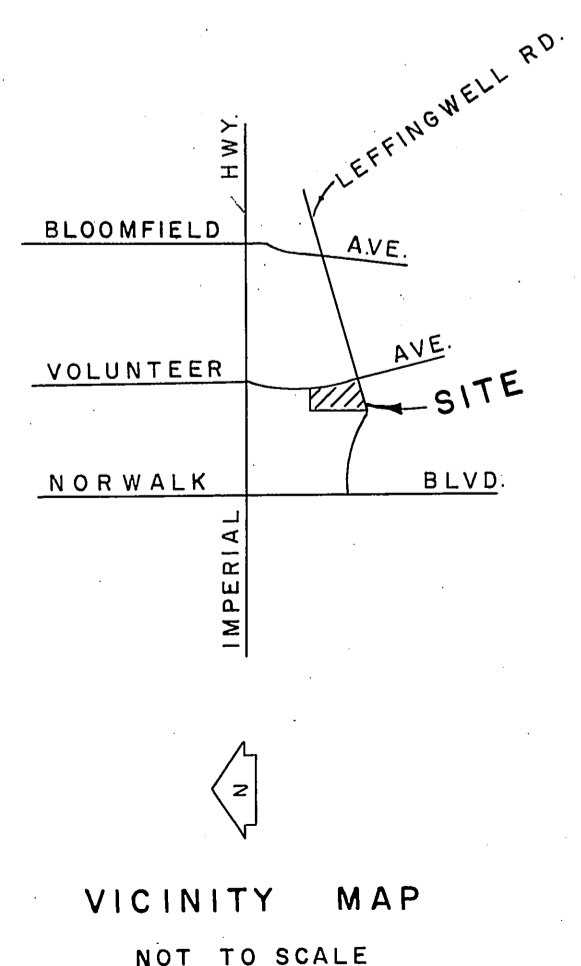
R. 11 W.



SEC. 18

T. 3 S.

R. 11 W.



COUNTY OF LOS ANGELES DEPARTMENT OF COUNTY ENGINEER JOHN A. LAMBIE - COUNTY ENGINEER PREPARED BY SURVEY DIVISION C. E. BRUNTY - DIVISION ENGINEER SURVEYED BY <b>R. B. HOBSON</b> CHECKED BY <b>R. G. HILARIO</b> DRAWN BY <b>R. MANOR</b>	BOUNDARY MAP OF <b>NORWALK SHERIFF'S          STATION SITE</b> FOR TOPOGRAPHY SEE SURVEY DIVISION FILE MAP NO. P.T. 417-A BASIS OF BEARINGS THE BEARING OF IMPERIAL HIGHWAY (N.89°37'37"E) AS SHOWN ON C.S.B-2888.		COUNTY SURVEYOR'S MAP NO. <b>B-5061</b> SHEET 1 OF 1 SHEET FILED <b>7-2</b> 19 <b>69</b> <i>George J. Brantner</i> DEPUTY SURVEYED MARCH 1969 F. B. 3147-157-171	REVISION NO. BY DATE
	JOB NUMBER 0018.17		INDEX MAP NO. 33	