

VICINITY MAP
NOT TO SCALE

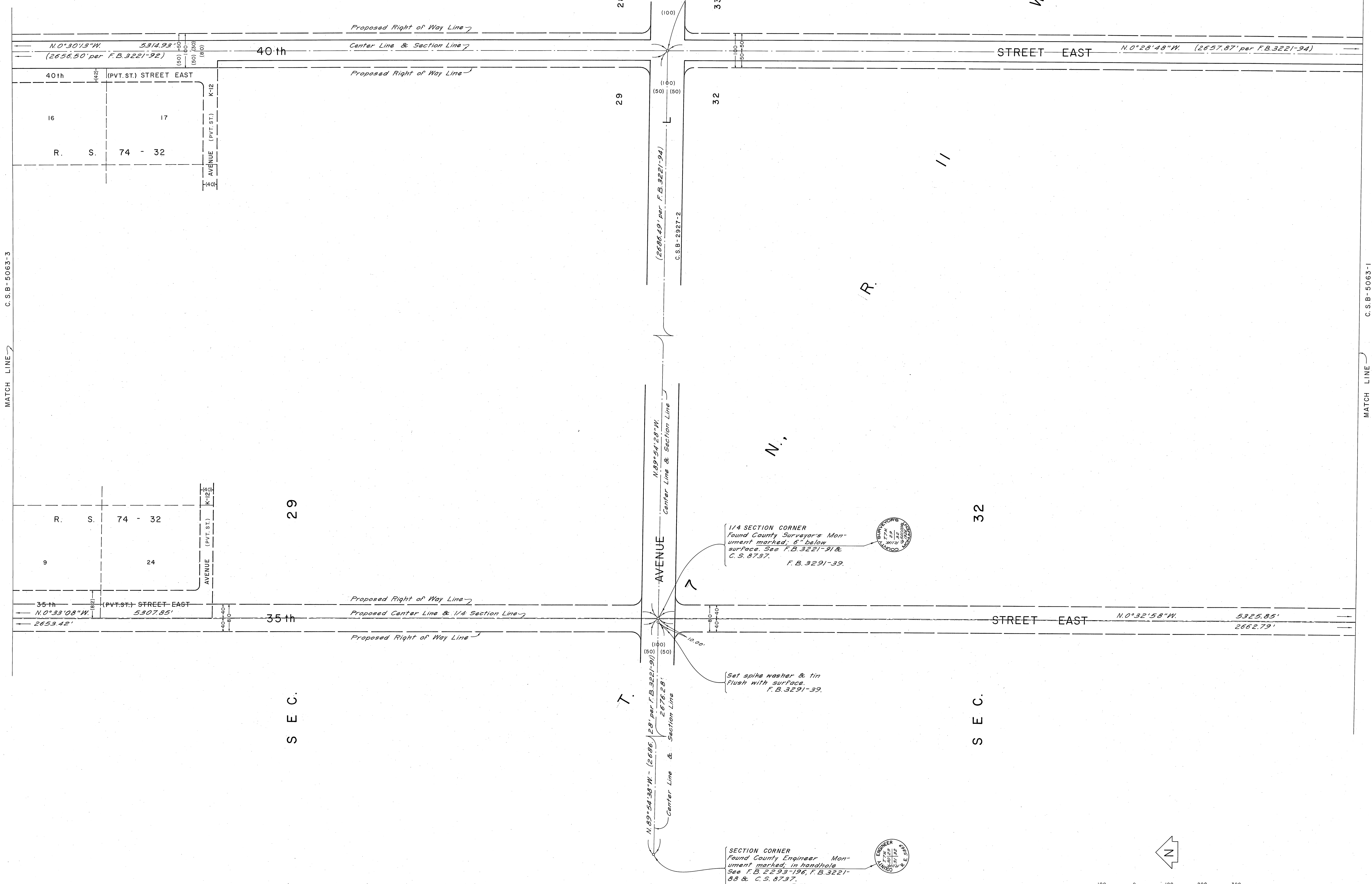
COUNTY OF LOS ANGELES DEPARTMENT OF COUNTY ENGINEER JOHN A. LAMBIE - COUNTY ENGINEER PREPARED BY SURVEY DIVISION C. E. BRUNTY - DIVISION ENGINEER J. PIERCE SURVEYED BY J. MENDONÇA CHECKED BY H. HOLMAN DRAWN BY S. BRIONES	ALIGNMENT MAP OF 35th STREET EAST FROM AVENUE M TO AVENUE G AND 40th STREET EAST FROM AVENUE M TO AVENUE E		COUNTY SURVEYOR'S MAP NO. B-5063 SHEET 1 OF 11 SHEETS FILED: <i>12-16-1962</i> <i>George E. Brumby</i> DEPUTY SURVEYED & DEC. 1966 REFERENCE F. B. 3291-5-139	REVISION NO. BY DATE
	BASIS OF BEARINGS THE BEARING OF AVENUE G (S. 89° 36' 10" W.) AS SHOWN ON C.S.B-3021-5.		JOB NUMBER 0097 03 0075 40	INDEX MAP NO. 70

S E C. 28

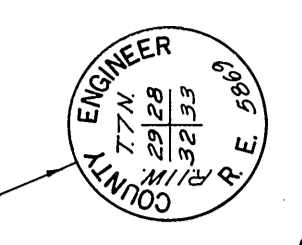
28

S E C. 33

33



SECTION CORNER
 Found County Engineer Mon-
 ument marked, in handhole.
 See F.B. 3221-92.
 F.B. 3291-65.

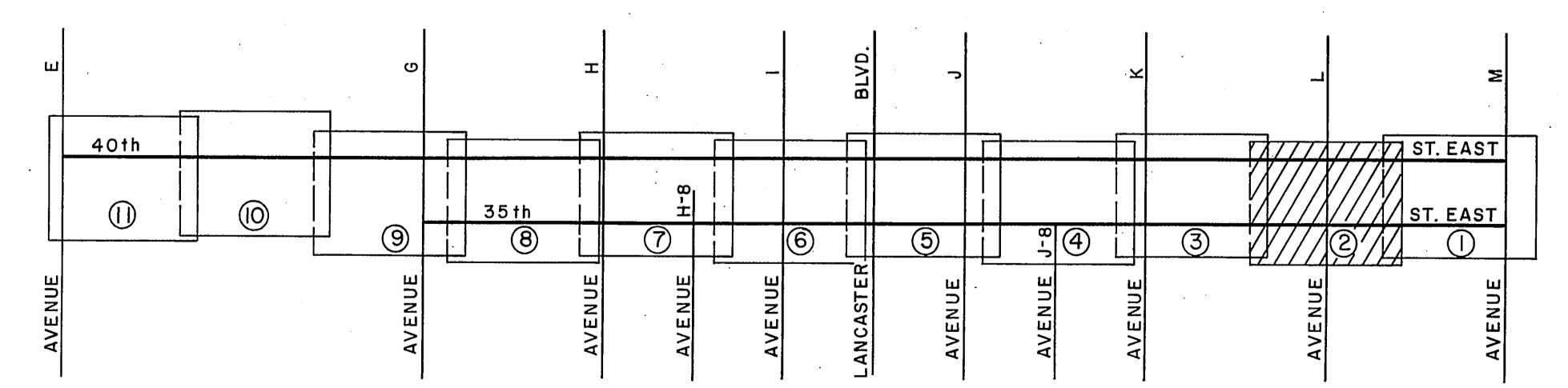
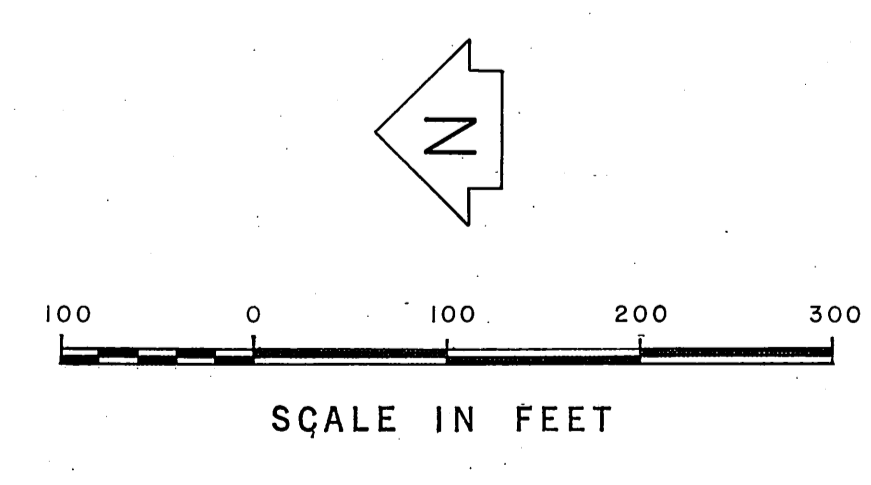
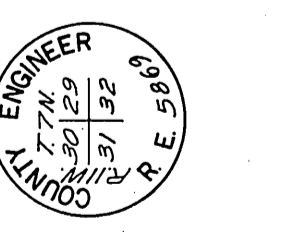


1/4 SECTION CORNER
 Found County Surveyor's Mon-
 ument marked, 6" below
 surface. See F.B. 3221-91 &
 C.S. 8737.
 F.B. 3291-39.



Set spike washer & tin
 flush with surface.
 F.B. 3291-39.

SECTION CORNER
 Found County Engineer Mon-
 ument marked, in handhole.
 See F.B. 2293-196, F.B. 3221-
 88 & C.S. 8737.
 F.B. 3291-13.



VICINITY MAP
 NOT TO SCALE

COUNTY OF LOS ANGELES
 DEPARTMENT OF
 COUNTY ENGINEER
 JOHN A. LAMBIE - COUNTY ENGINEER
 PREPARED BY
 SURVEY DIVISION
 C. E. BRUNTY - DIVISION ENGINEER
 J. PIERCE
 SURVEYED BY
 MENDOZA
 CHECKED BY
 H. HOLMAN
 DRAWN BY
 S. BRIONES

ALIGNMENT MAP OF
35th STREET EAST
 FROM AVENUE M TO AVENUE G
 AND
40th STREET EAST
 FROM AVENUE M TO AVENUE E
 BASIS OF BEARINGS
 THE BEARING OF AVENUE G (S.89°36'10"W.)
 AS SHOWN ON C.S.B-3021-5.

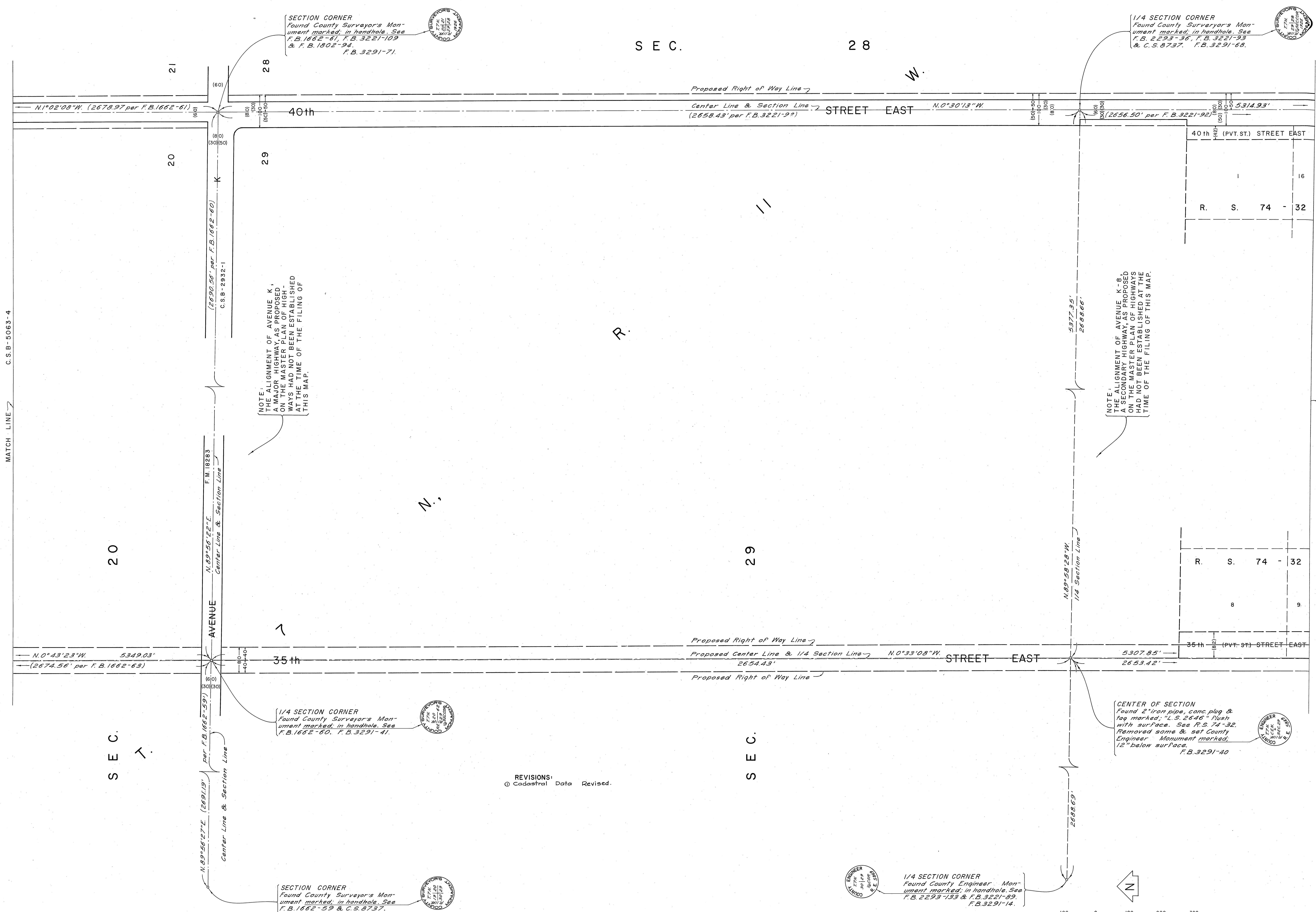
COUNTY SURVEYOR'S MAP NO. B-5063	REVISION
SHEET 2 OF 11 SHEETS	NO. BY DATE
FILED: 12-18-1966 Mary O. Briones DEPUTY	
SURVEYED SEPT. & DEC. 1966	
REFERENCE F.B. 3291-5-139	
JOB NUMBER 007.03 0073.40	INDEX MAP NO. 70

MATCH LINE

MATCH LINE

MATCH LINE C.S.B.-5063-4

MATCH LINE C.S.B.-5063-2



NOTE: THE ALIGNMENT OF AVENUE K, AS PROPOSED ON THE MASTER PLAN, HAS NOT BEEN ESTABLISHED AT THE TIME OF THE FILING OF THIS MAP.

NOTE: THE ALIGNMENT OF AVENUE K-8, AS PROPOSED ON THE MASTER PLAN OF HIGHWAYS, HAS NOT BEEN ESTABLISHED AT THE TIME OF THE FILING OF THIS MAP.

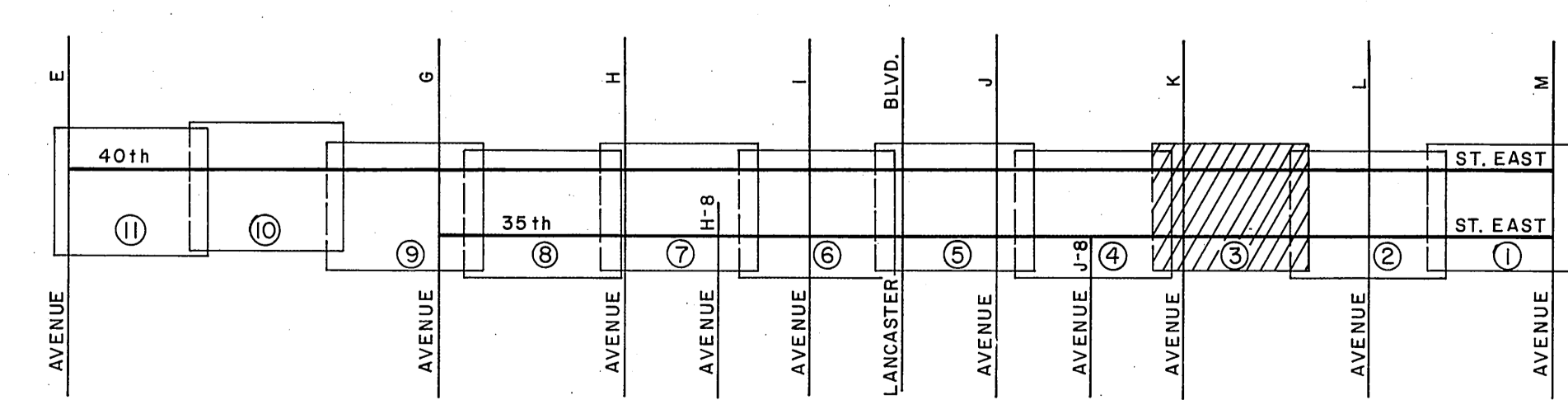
1/4 SECTION CORNER Found County Surveyor's Monument marked, in handhole. See F.B. 1662-60, F.B. 3291-41.

CENTER OF SECTION Found 2" iron pipe, conc. plug & tag marked; L.S. 2646" flush with surface. See R.S. 74-32. Removed some & set County Engineer Monument marked, 12" below surface. F.B. 3291-40.

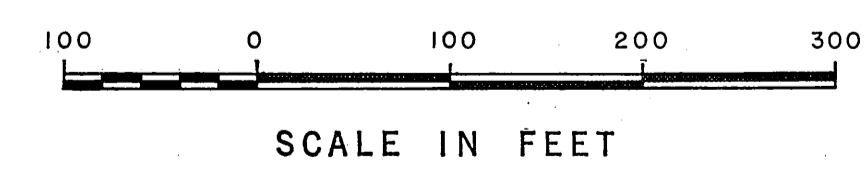
SECTION CORNER Found County Surveyor's Monument marked, in handhole. See F.B. 1662-59 & C.S. 8737, F.B. 3291-15.

1/4 SECTION CORNER Found County Engineer Monument marked, in handhole. See F.B. 2293-133 & F.B. 3221-89, F.B. 3291-14.

REVISIONS:
 ⓐ Cadastral Data Revised.



VICINITY MAP
 NOT TO SCALE



COUNTY OF LOS ANGELES DEPARTMENT OF COUNTY ENGINEER JOHN A. LAMBIE - COUNTY ENGINEER PREPARED BY SURVEY DIVISION C. E. BRUNTY - DIVISION ENGINEER SURVEYED BY J. MENDONCA CHECKED BY H. HOLMAN DRAWN BY S. BRIONES	ALIGNMENT MAP OF 35th STREET EAST FROM AVENUE M TO AVENUE G AND 40th STREET EAST FROM AVENUE M TO AVENUE E		COUNTY SURVEYOR'S MAP NO. B-5063	REVISION NO. BY DATE 1 A.M. 9-8-78
	SHEET 5 OF 11 SHEETS FILED: 10-18-1966 <i>George D. Cunningham</i> COUNTY ENGINEER		SURVEYED SEPT. 8 DEC. 1966	
	BASIS OF BEARINGS THE BEARING OF AVENUE G (S.89°36'10"W.) AS SHOWN ON C.S.B.-3021-5.		REFERENCE F. B. 3291-5-139	
			OR NUMBER 009703 0075,40	INDEX MAP NO. 70

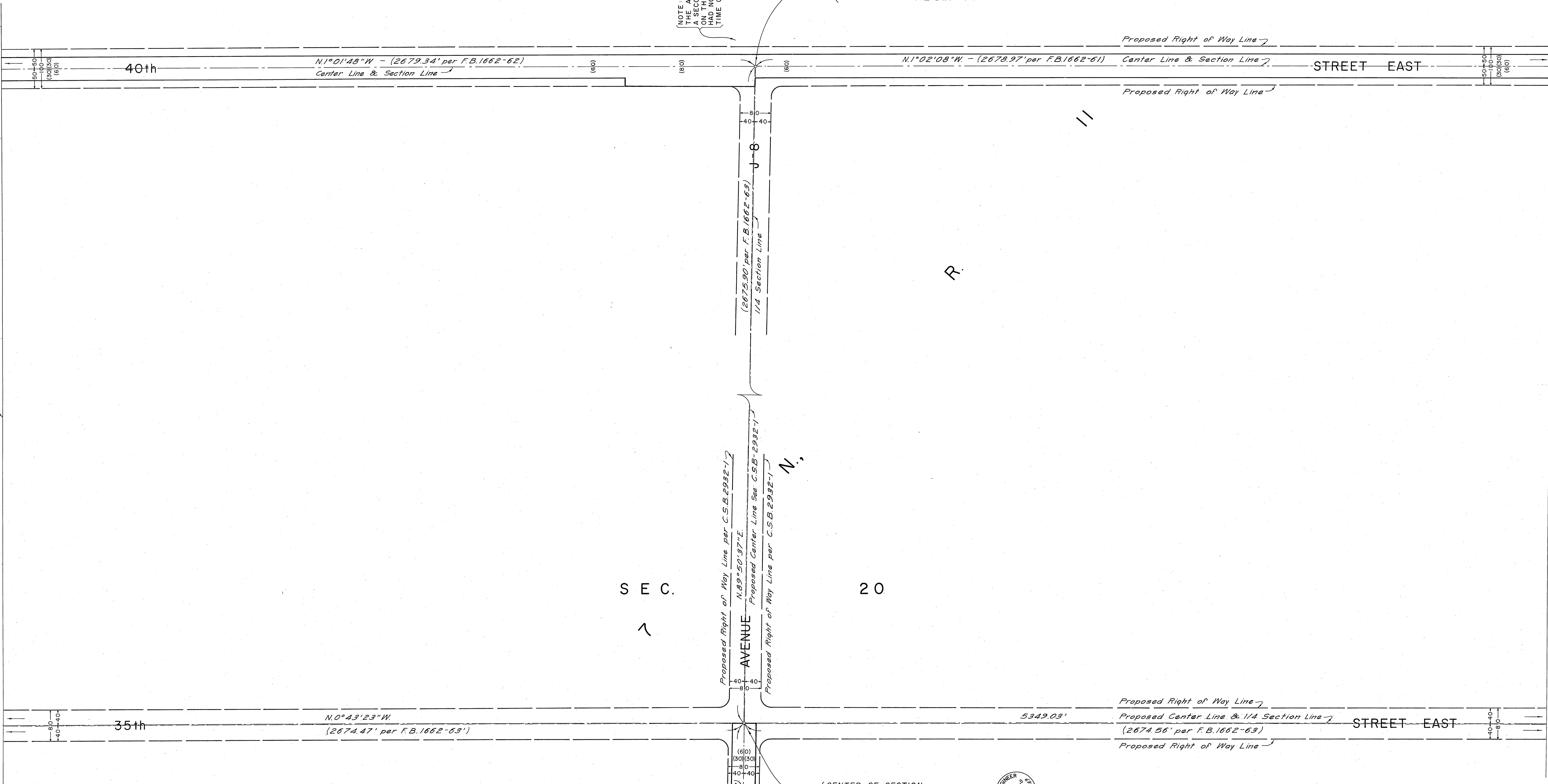
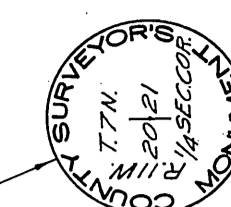
SEC.

21

W.

(NOTE) THE ALIGNMENT OF AVENUE J-8, A SECONDARY HIGHWAY, AS PROPOSED ON THE MASTER PLAN OF HIGHWAYS FOR THE COUNTY OF LOS ANGELES AT THE TIME OF THE FILING OF THIS MAP.

1/4 SECTION CORNER Found County Surveyor's Monument marked in handhole. See F.B. 1662-62, F.B. 1802-95, F.B. 2237-124 & C.S. 8737, F.B. 3291-74



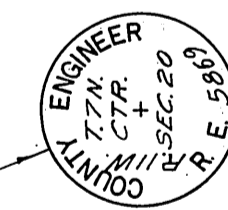
SEC.

20

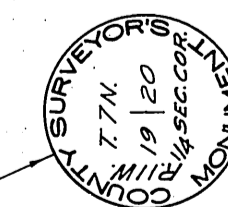
1

N.

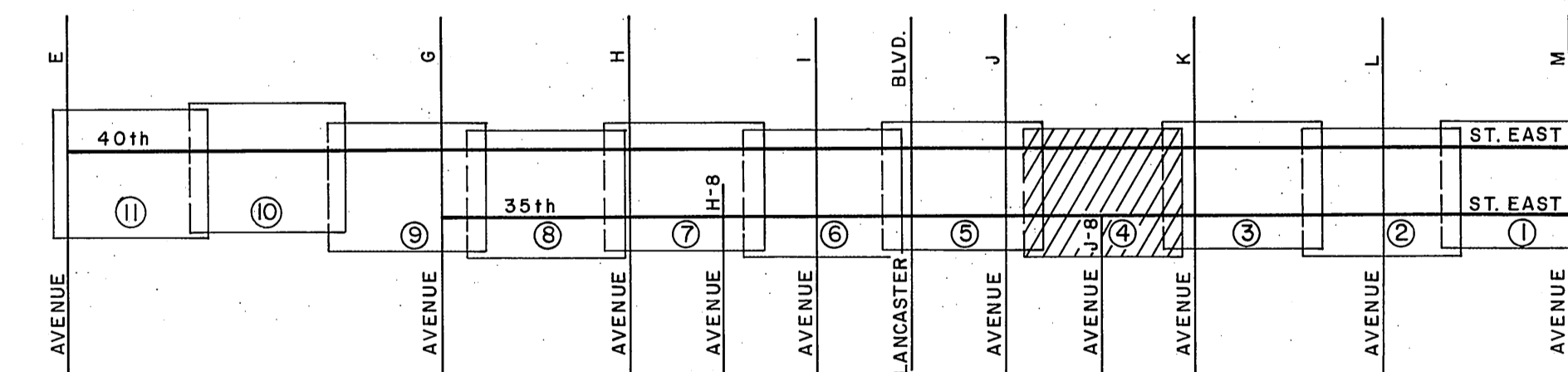
CENTER OF SECTION Found County Engineer Monument marked 12" below surface. See F.B. 1662-63, F.B. 3291-42.



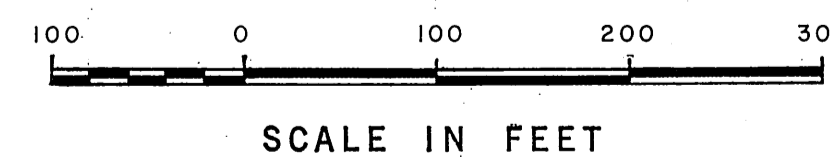
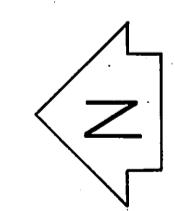
1/4 SECTION CORNER Found County Surveyor's Monument marked in handhole. See F.B. 1662-57, F.B. 1873-174, F.B. 1874-96 & C.S. 8737, F.B. 3291-16.



REVISIONS: (1) Cadastral Data Revised.



VICINITY MAP NOT TO SCALE



COUNTY OF LOS ANGELES DEPARTMENT OF COUNTY ENGINEER JOHN A. LAMBIE - COUNTY ENGINEER PREPARED BY SURVEY DIVISION C. E. BRUNTY - DIVISION ENGINEER SURVEYED BY J. PIERCE CHECKED BY H. HOLMAN DRAWN BY S. BRIONES	ALIGNMENT MAP OF 35th STREET EAST FROM AVENUE M TO AVENUE G AND 40th STREET EAST FROM AVENUE M TO AVENUE E		COUNTY SURVEYOR'S MAP NO. B-5063 SHEET 4 OF 11 SHEETS FILED: 12-16-1962 DEPT. OF PUBLIC WORKS DEPUTY SEPT. & DEC. 1966 REFERENCE F. B. 3291-5-139 JOB NUMBER 039703 0375.46	REVISION NO. 1 DATE 9-8-72
	BASIS OF BEARINGS THE BEARING OF AVENUE G (S.89°36'10"W.) AS SHOWN ON C.S.B-3021-5.			
	INDEX MAP NO. 70			
	INDEX MAP NO. 70			

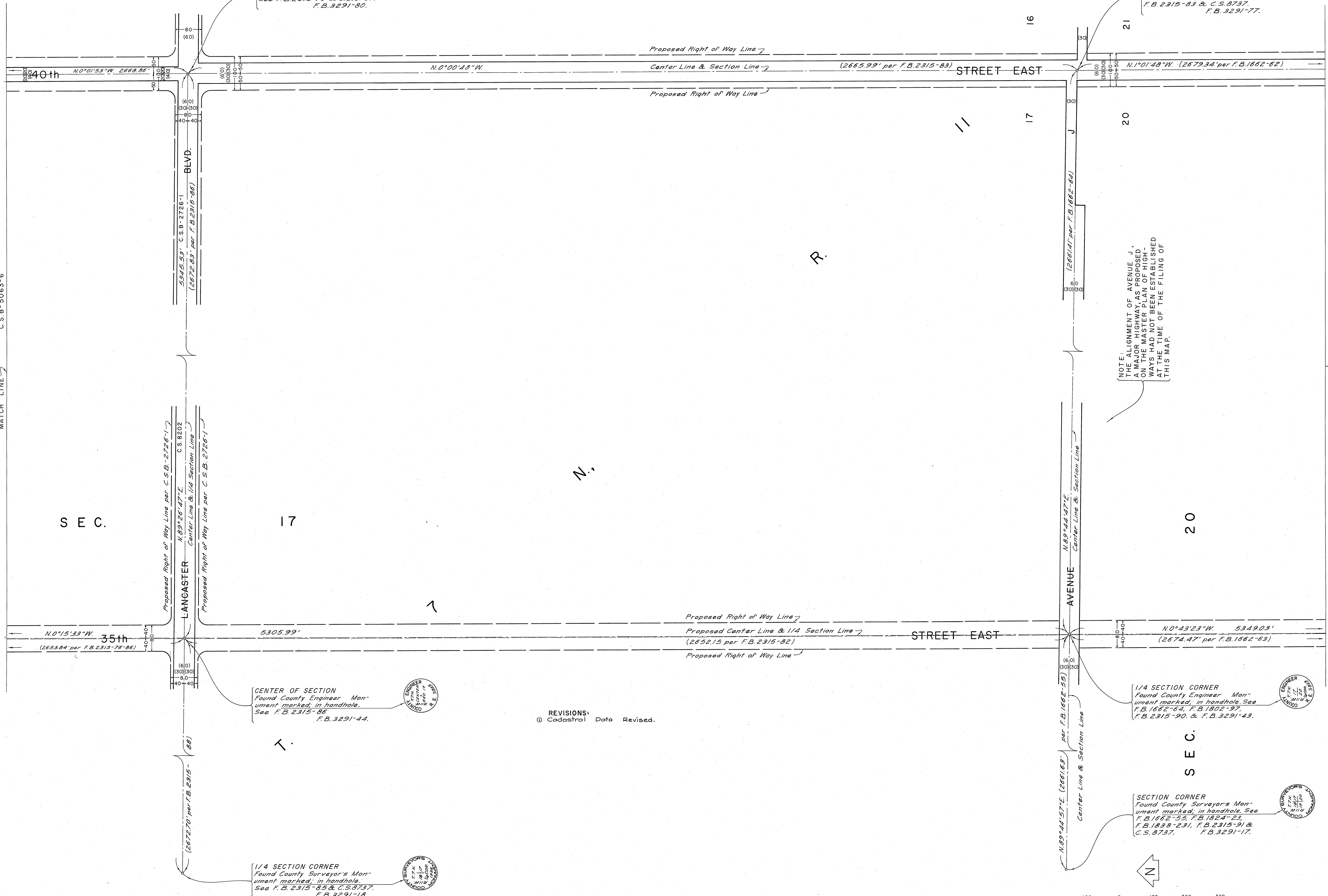
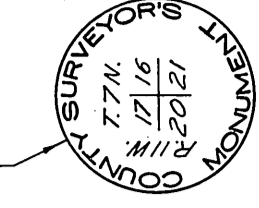
S E C.

16

16

21

SECTION CORNER
Found County Surveyor's Mon-
ument marked, in handhole. See
F. B. 1662-65, F. B. 1802-96,
F. B. 2315-93 & C. S. 8737.
F. B. 3291-77.



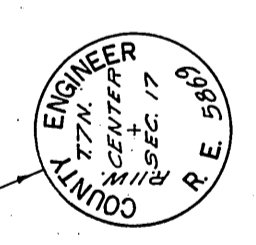
NOTE:
THE ALIGNMENT OF AVENUE J,
AS SHOWN ON THIS PROPOSED
MAP, IS AN ALIGNMENT
ON THE MASTER PLAN. THE
WAYS HAD NOT BEEN ESTABLISHED
AT THE TIME OF THE FILING OF
THIS MAP.

S E C.

17

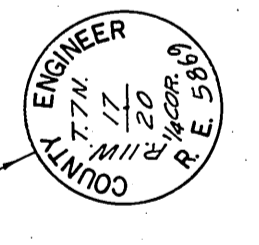
20

CENTER OF SECTION
Found County Engineer Mon-
ument marked, in handhole. See
F. B. 2315-86
F. B. 3291-44.

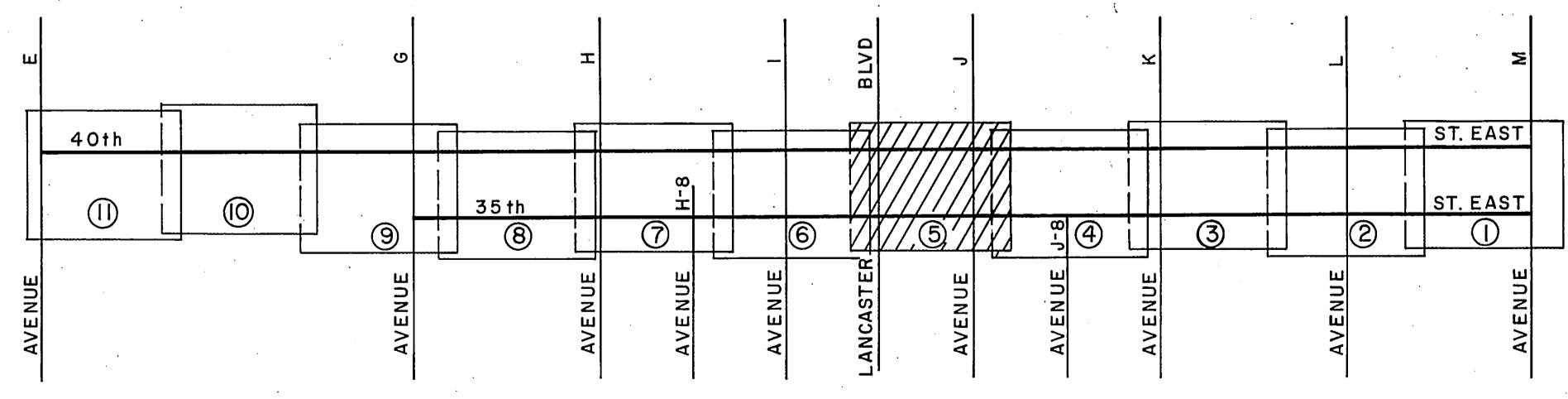
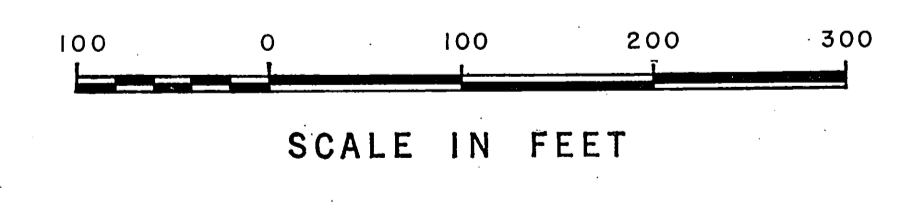
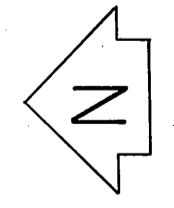
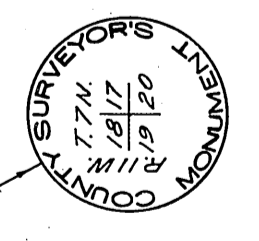


REVISIONS:
① Cadastral Data Revised.

1/4 SECTION CORNER
Found County Engineer Mon-
ument marked, in handhole. See
F. B. 1662-64, F. B. 1802-97,
F. B. 2315-90, & F. B. 3291-43.



SECTION CORNER
Found County Surveyor's Mon-
ument marked, in handhole. See
F. B. 1662-55, F. B. 1824-23,
F. B. 1833-231, F. B. 2315-91 &
C. S. 8737.
F. B. 3291-17.



VICINITY MAP
NOT TO SCALE

COUNTY OF LOS ANGELES
DEPARTMENT OF
COUNTY ENGINEER
JOHN A. LAMBIE - COUNTY ENGINEER
PREPARED BY
SURVEY DIVISION
C. E. BRUNTY - DIVISION ENGINEER
BY PIERCE
SURVEYED BY J. MENDONCA
CHECKED BY H. HOLMAN
DRAWN BY S. BRIONES

ALIGNMENT MAP OF
35th STREET EAST
FROM AVENUE M TO AVENUE G
AND
40th STREET EAST
FROM AVENUE M TO AVENUE E
BASIS OF BEARINGS
THE BEARING OF AVENUE G (S.89°36'10\"/>

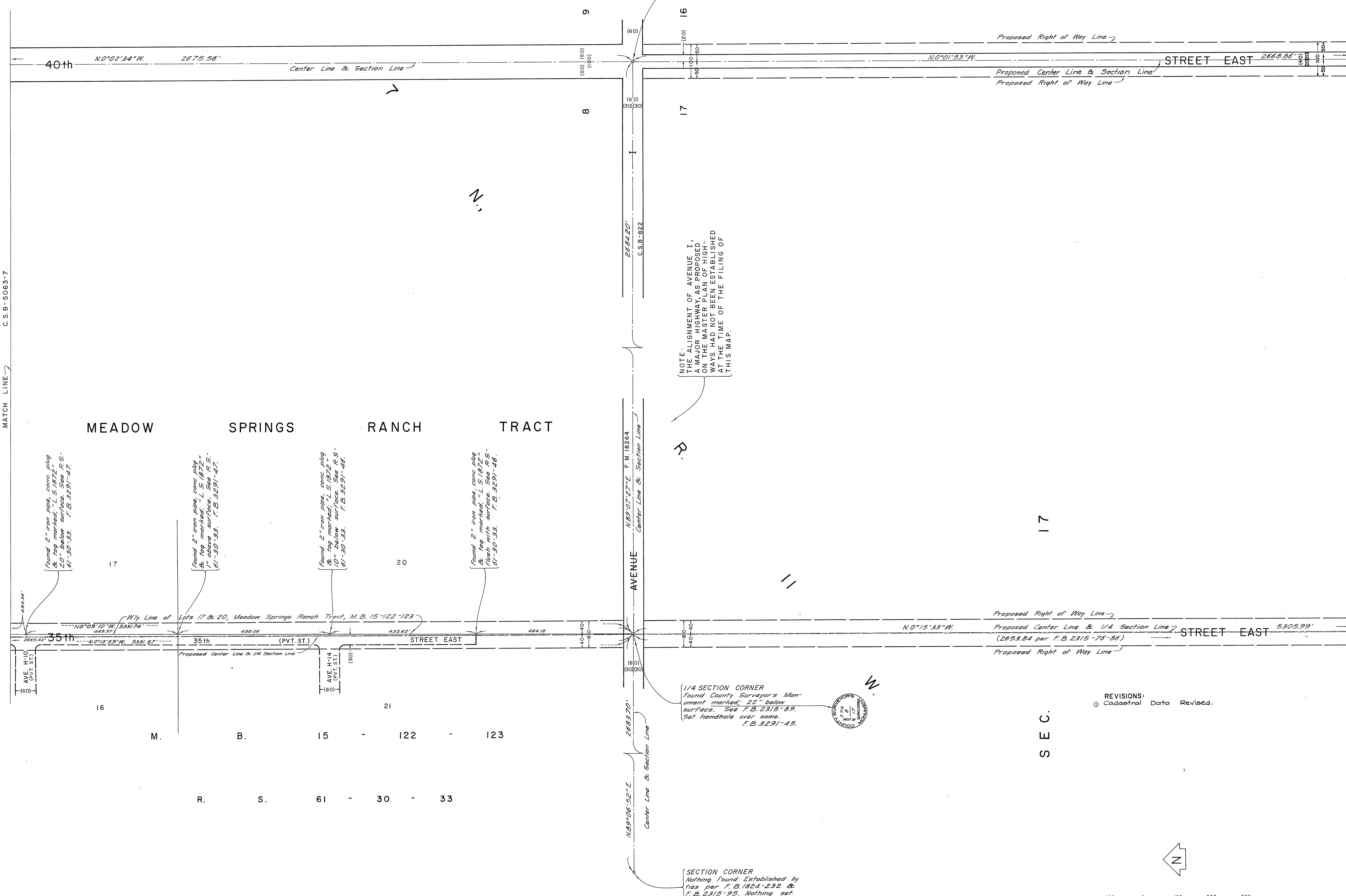
COUNTY SURVEYOR'S MAP NO. B-5063		REVISION
SHEET 5 OF 11 SHEETS		NO. BY DATE
FILED: 12-18-1962		① A.M. 3-6-72
DEPUTY SURVEYOR SEPT. 9 DEC. 1966		
REFERENCE F. B. 3291-5-139		
JOB NUMBER 009703	INDEX MAP NO. 70	

SEC. 9

9

SEC. 16

16

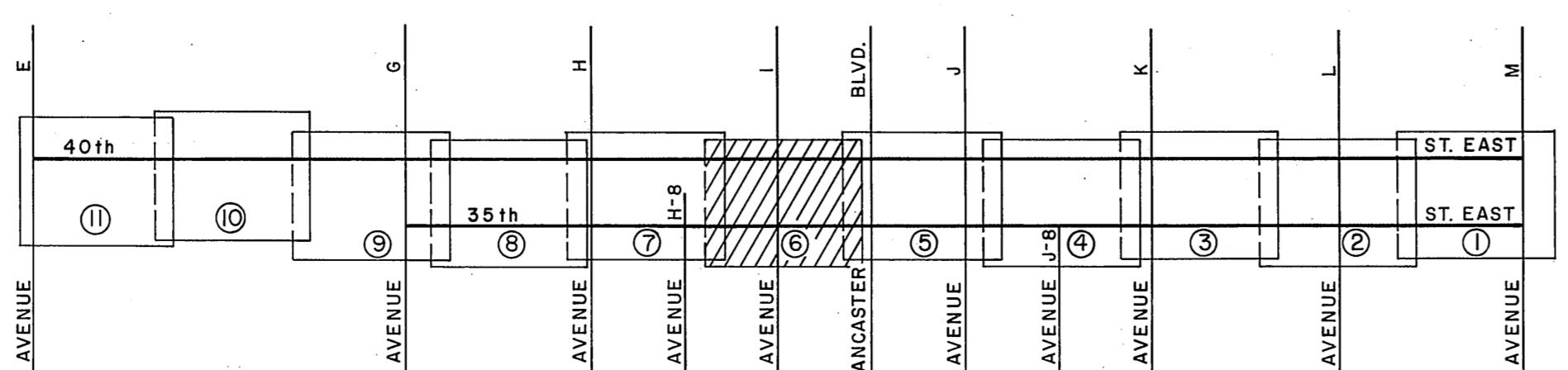


MEADOW SPRINGS RANCH TRACT

35th STREET EAST

40th STREET EAST

M. B. 15-122-123
15 - 122 - 123
61 - 30 - 33



COUNTY OF LOS ANGELES
DEPARTMENT OF
COUNTY ENGINEER
JOHN A. LAMBIE - COUNTY ENGINEER
PREPARED BY
SURVEY DIVISION
C. E. BRUNTY - DIVISION ENGINEER
SURVEYED BY J. MENDONCA
CHECKED BY H. HOLMAN
DRAWN BY S. BRIONES

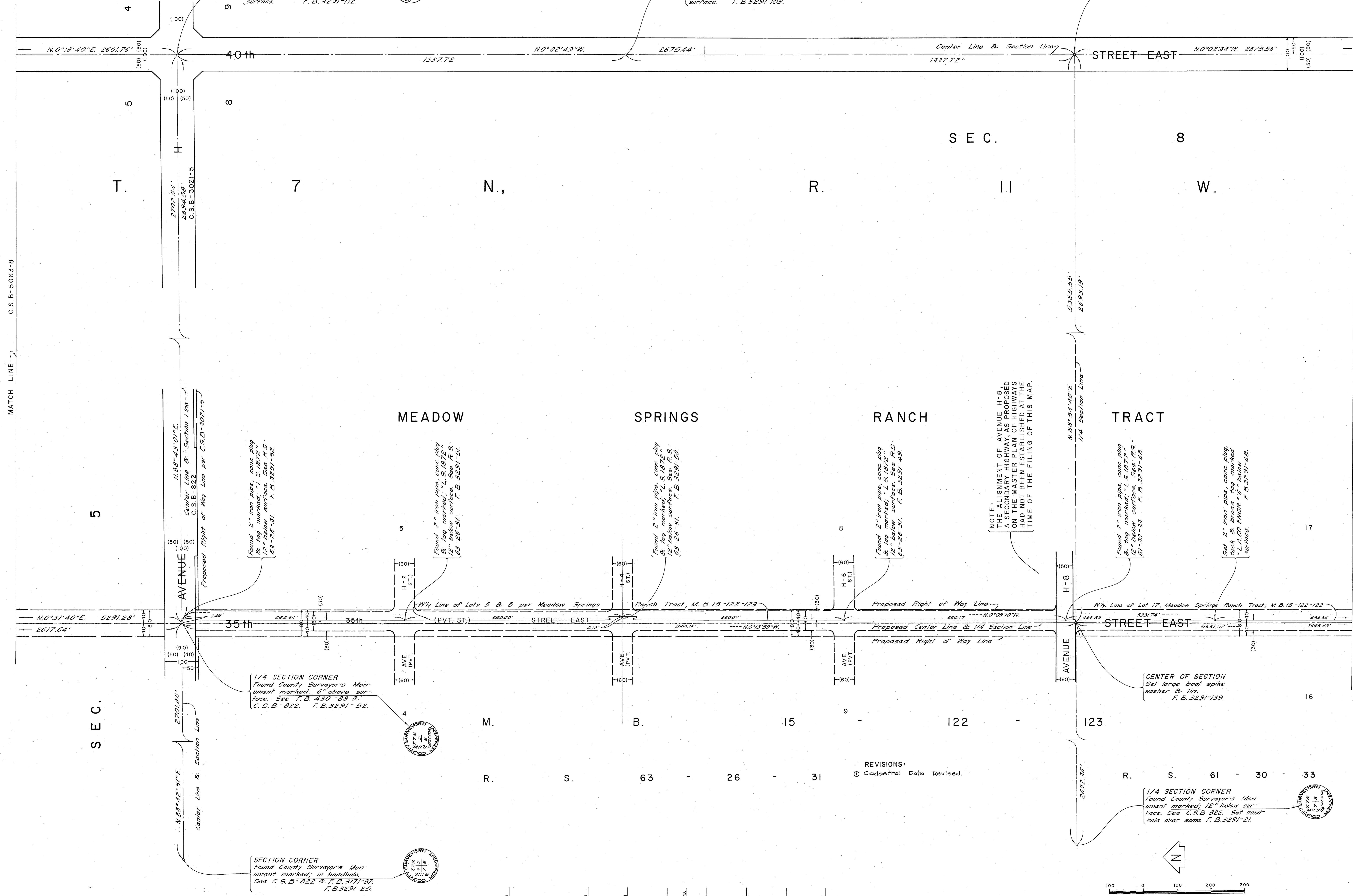
ALIGNMENT MAP OF
35th STREET EAST
FROM AVENUE M TO AVENUE G
AND
40th STREET EAST
FROM AVENUE M TO AVENUE E
BASIS OF BEARINGS
THE BEARING OF AVENUE G (S.89°36'10"W.)
AS SHOWN ON C.S.B-3021-5

COUNTY SURVEYOR'S MAP NO. B-5063		REVISION	
SHEET 6 OF 11 SHEETS		NO.	DATE
FILED 12-16-19 62		10	5-9-76
SURVEYED SEPT. & DEC. 1966		BY S. BRIONES	
REFERENCE F.B. 3291-5-139		DATE	
JOB NUMBER 099703 0975.40	INDEX MAP NO. 70	DATE	

MATCH LINE

MATCH LINE

C.S.B-2023-1



MATCH LINE C.S.B-5063-8

MATCH LINE C.S.B-5063-6

SECTION CORNER
 Found County Surveyor's Monument marked, 5.4" below surface. See C.S.B-822 & F.B. 3177-92. Set County Engineer Monument marked, 12" below surface. F.B. 3291-112.

1/4 SECTION CORNER
 Found iron pin, 12" below surface. Replaced same with 1" iron pipe, conc. plug, tack & brass tag marked, "L.A. CO. ENGR." 12" below surface. F.B. 3291-103.

1/4 SECTION CORNER
 Found County Surveyor's Monument marked, 30" below surface. See C.S.B-822 & F.B. 3291-100.

Found 2" iron pipe, conc. plug & tag marked, "L.S. 1872" 12" below surface. See F.S. 63-26-31. F.B. 3291-52.

Found 2" iron pipe, conc. plug & tag marked, "L.S. 1872" 12" below surface. See F.S. 63-26-31. F.B. 3291-51.

Found 2" iron pipe, conc. plug & tag marked, "L.S. 1872" 12" below surface. See F.S. 63-26-31. F.B. 3291-50.

Found 2" iron pipe, conc. plug & tag marked, "L.S. 1872" 12" below surface. See F.S. 63-26-31. F.B. 3291-49.

Found 2" iron pipe, conc. plug & tag marked, "L.S. 1872" 12" below surface. See F.S. 61-50-33. F.B. 3291-48.

Set 2" iron pipe, conc. plug tack & brass tag marked "L.A. CO. ENGR." 6" below surface. F.B. 3291-48.

NOTE:
 THE ALIGNMENT OF AVENUE H-8, A SECONDARY HIGHWAY, AS PROPOSED IN THIS MAP, HAS BEEN ESTABLISHED AT THE TIME OF THE FILING OF THIS MAP.

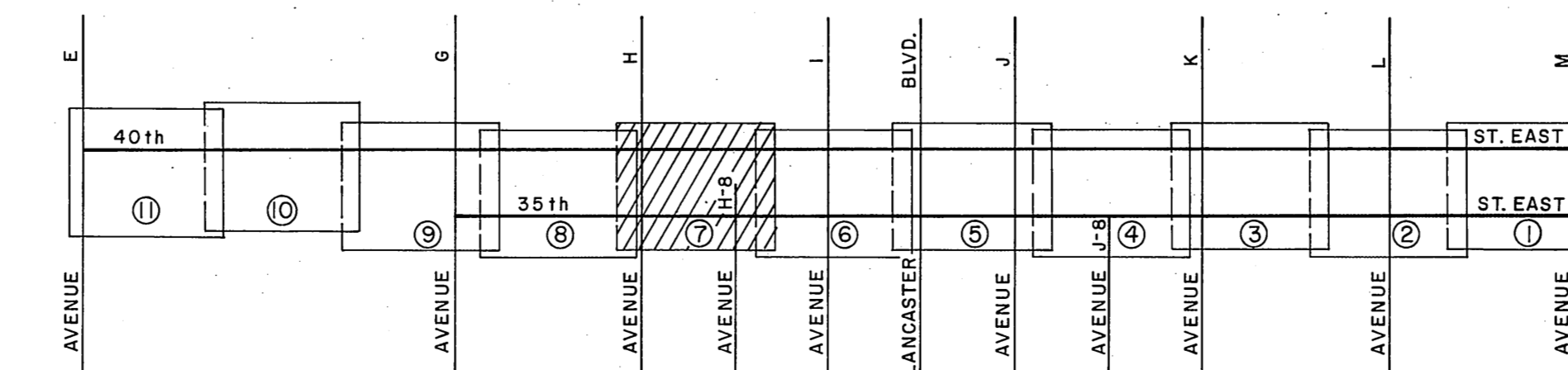
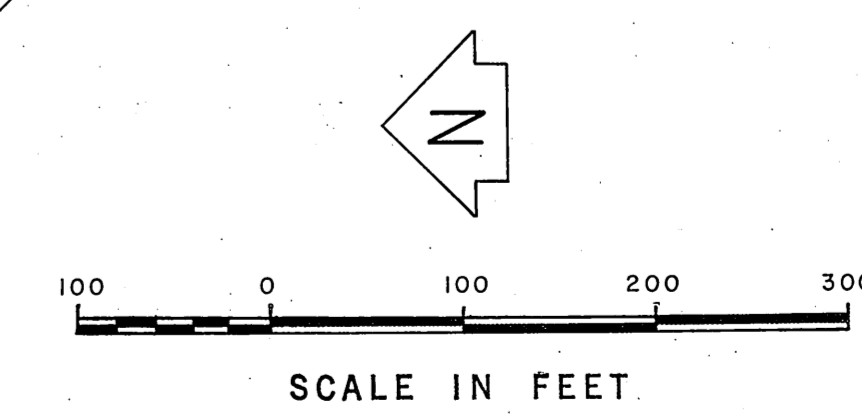
1/4 SECTION CORNER
 Found County Surveyor's Monument marked, 6" above surface. See F.B. 430-88 & C.S.B-822. F.B. 3291-52.

SECTION CORNER
 Found County Surveyor's Monument marked, in handhole. See C.S.B-822 & F.B. 3171-87. F.B. 3291-25.

CENTER OF SECTION
 Set large lead spike washer & tin. F.B. 3291-139.

1/4 SECTION CORNER
 Found County Surveyor's Monument marked, 12" below surface. See C.S.B-822. Set hand-hole over same. F.B. 3291-21.

REVISIONS:
 ① Cadastral Data Revised.



VICINITY MAP
 NOT TO SCALE

COUNTY OF LOS ANGELES
 DEPARTMENT OF
 COUNTY ENGINEER
 JOHN A. LAMBIE, COUNTY ENGINEER
 PREPARED BY
 SURVEY DIVISION
 C. E. BRUNTY, DIVISION ENGINEER
 SURVEYED BY J. MENDONÇA
 CHECKED BY H. HOLMAN
 DRAWN BY S. BRIGONES

ALIGNMENT MAP OF
35th STREET EAST
 FROM AVENUE M TO AVENUE G
 AND
40th STREET EAST
 FROM AVENUE M TO AVENUE E
 BASIS OF BEARINGS
 THE BEARING OF AVENUE G (S.89° 36' 10" W.)
 AS SHOWN ON C.S.B-3021-5.

COUNTY SURVEYOR'S MAP NO.		REVISION	
B-5063		NO. BY DATE	
SHEET 7 OF 11 SHEETS		① A.M. 5-9-76	
FILED	12-12-1962		
SURVEYED			
9 DEC. 1966			
REFERENCE			
F. B. 3291-5-139			
JOB NUMBER	INDEX MAP NO.		
0097.03	70		
0.075-40			

C.S.B-2023-1

MATCH LINE → C.S.B-5063-9

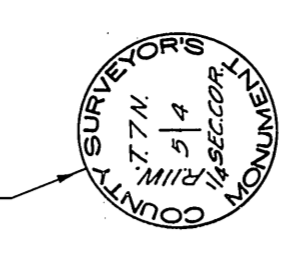
MATCH LINE ← C.S.B-5063-7

S E C.

4

W.

1/4 SECTION CORNER
Found County Surveyor's Mon-
ument marked, 16" below
surface. See C.S.B-822 &
F.B. 3177-31, F.B. 3291-120



Center Line & Section Line → STREET EAST N.0°18'40"E. 2601.76' (100) (50)

40th N.0°18'25"E. 2647.74' (100) (50)

5882.68'
2691.09'

NOTE:
THE ALIGNMENT OF AVENUE G-B
A SECONDARY HIGHWAY, AS PROPOSED
ON THE MASTER PLAN OF HIGHWAYS
HAD NOT BEEN ESTABLISHED AT THE
TIME OF THE FILING OF THIS MAP.

R.

N.

S E C.

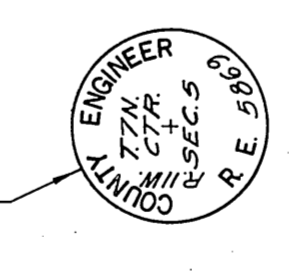
5

M.89°03'00"E
1/4 Section Line

Proposed Right of Way Line → Proposed Center Line & 1/4 Section Line → STREET EAST 5291.28' (100) (50)

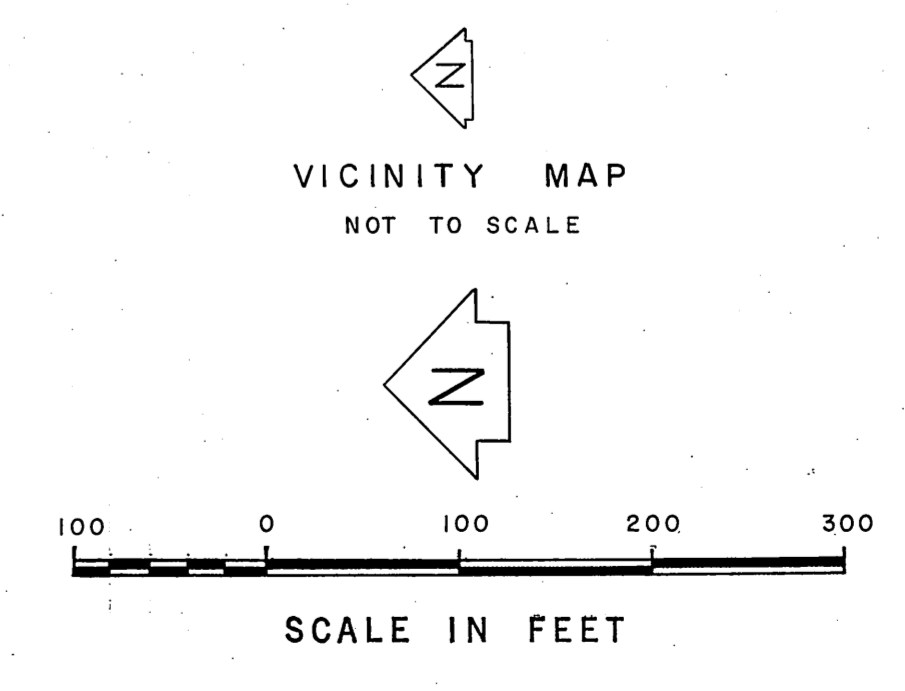
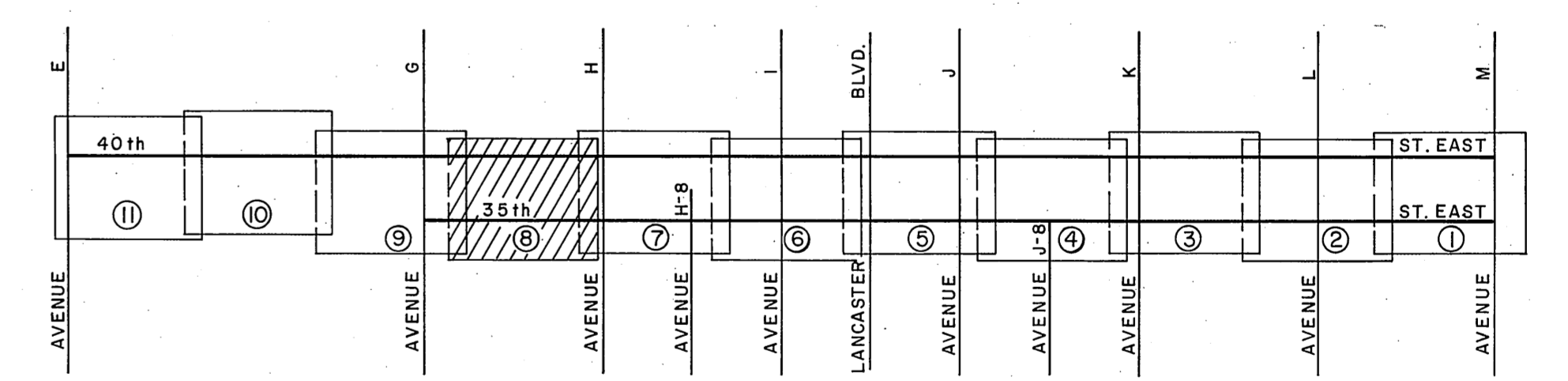
35th N.0°31'40"E. 2673.64' (100) (50)

CENTER OF SECTION
Established by intersection.
Set County Engineer Mon-
ument marked, flush with
surface. F.B. 3291-53



2691.19'

1/4 SECTION CORNER
Found County Surveyor's Mon-
ument marked, in handhole. See
F.B. 3177-86, F.B. 3291-31



COUNTY OF LOS ANGELES DEPARTMENT OF COUNTY ENGINEER JOHN A. LAMBIE - COUNTY ENGINEER SURVEY DIVISION PREPARED BY C. E. BRUNTY - DIVISION ENGINEER SURVEYED BY PIERCE MENDONCA CHECKED BY H. HOLMAN DRAWN BY S. BRIONES	ALIGNMENT MAP OF 35th STREET EAST FROM AVENUE M TO AVENUE G AND 40th STREET EAST FROM AVENUE M TO AVENUE E		COUNTY SURVEYOR'S MAP NO. B-5063 SHEET 8 OF 11 SHEETS FILED: 12-18-1966 SURVEYED SEPT. & DEC. 1966 REFERENCE F. B. 3291-5-139 JOB NUMBER 0075.03 INDEX MAP NO. 70	REVISION NO. BY DATE
	BASIS OF BEARINGS THE BEARING OF AVENUE G (S.89°36'10"W.) AS SHOWN ON C.S.B-3021-5.			

SEC.

33

1/4 SECTION CORNER
Found County Surveyor's Monument marked 4" above surface. See C.S.B. 822. F.B. 3291-126.



SECTION CORNER
Found County Surveyor's Monument marked 18" below surface. See C.S.B. 822 & F.B. 3177-90. Set handhole over same. F.B. 3291-123

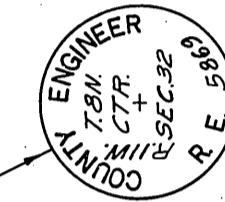


SEC.

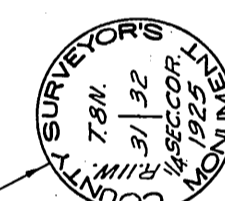
32,

T. 8 N., R. II W.

CENTER OF SECTION
Found 2" x 2" stake & flag marked "L.S. 2646" flush with surface. Removed same & set County Engineer Monument marked flush with surface. F.B. 3291-58.



1/4 SECTION CORNER
Found County Surveyor's Monument marked 16" below surface. See C.S. 3736-7 & F.B. 79-108. Set handhole over same. F.B. 3291-33.

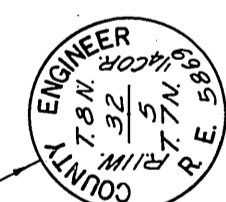


SEC.

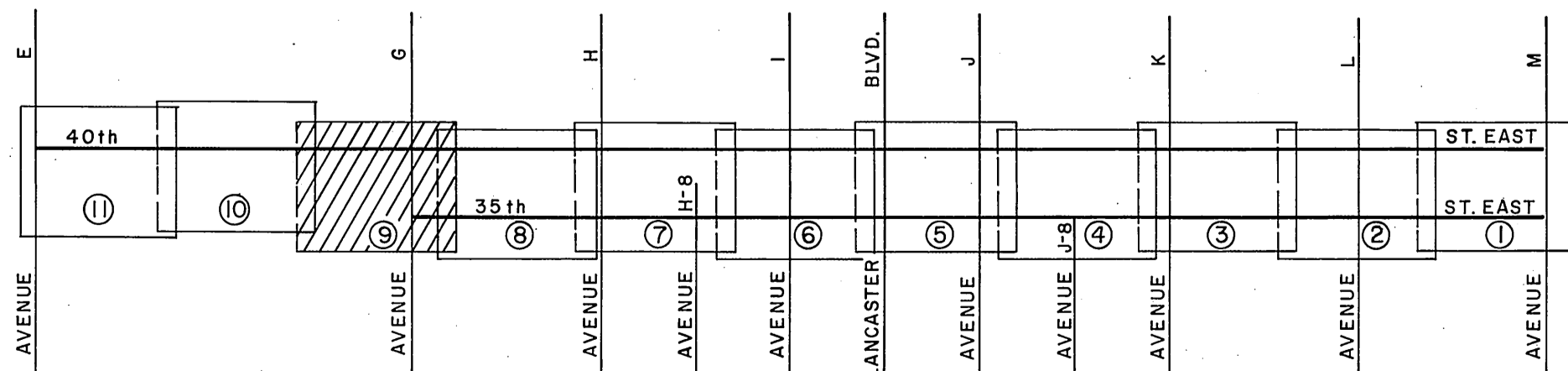
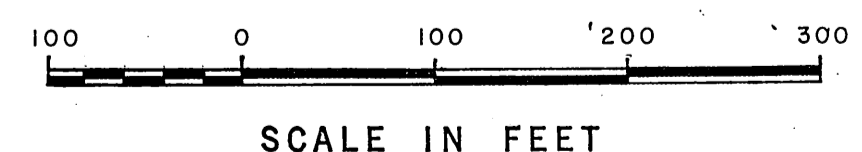
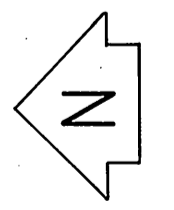
5,

T. 7 N., R. II W.

1/4 SECTION CORNER
Set County Engineer Monument marked in handhole. per ties. See F.B. 3177-88. F.B. 3291-54.



SECTION CORNER
Found County Surveyor's Monument marked in handhole. See C.S.B. 822. F.B. 3291-32



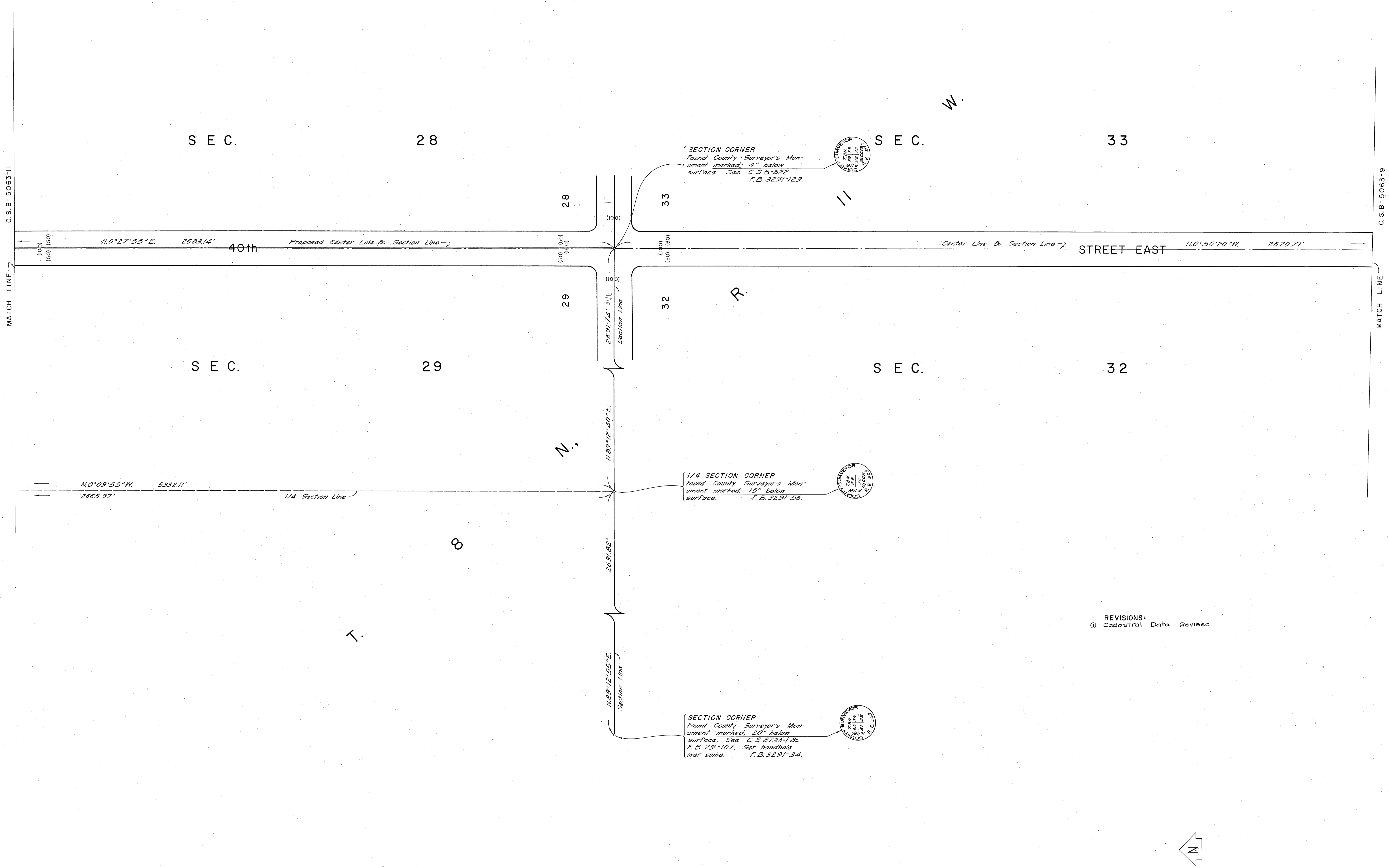
VICINITY MAP NOT TO SCALE

COUNTY OF LOS ANGELES
DEPARTMENT OF COUNTY ENGINEER
JOHN A. LAMBIE - COUNTY ENGINEER
PREPARED BY SURVEY DIVISION
C. E. BRUNTY - DIVISION ENGINEER
SURVEYED BY J. PIERCE
CHECKED BY H. HOLMAN
DRAWN BY S. BRIONES

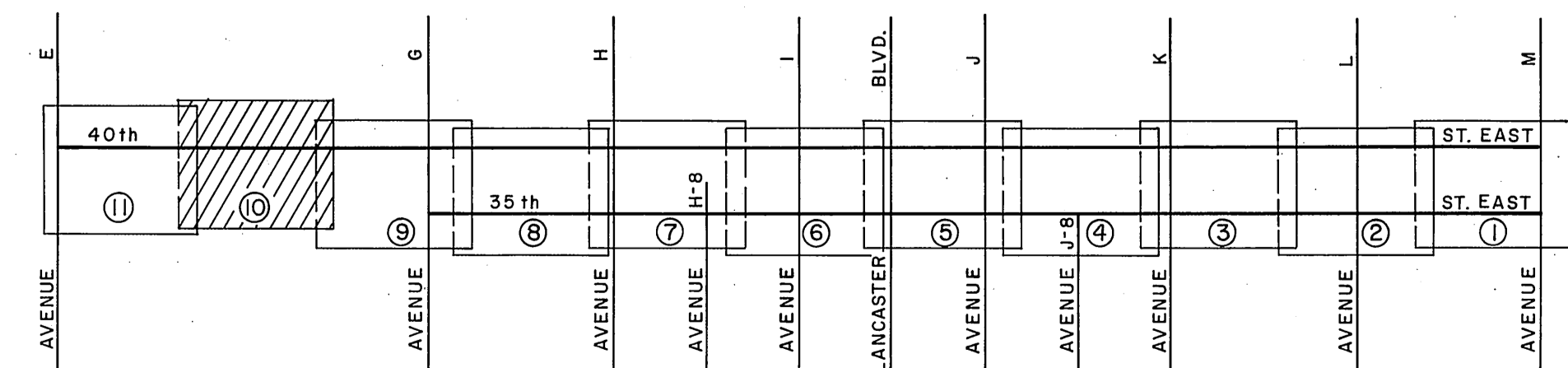
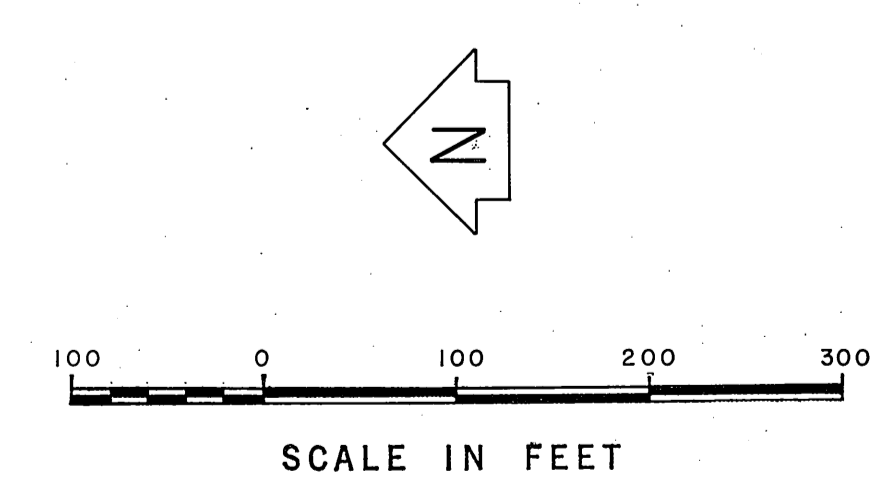
ALIGNMENT MAP OF
35th STREET EAST
FROM AVENUE M TO AVENUE G
AND
40th STREET EAST
FROM AVENUE M TO AVENUE E
BASIS OF BEARINGS
THE BEARING OF AVENUE G (S.89°36'10" W.)
AS SHOWN ON C.S.B. 3021-5.

COUNTY SURVEYOR'S MAP NO.
B-5063
SHEET 9 OF 11 SHEETS
FILED 12-18-1966
George J. Briones
DEPUTY
SURVEYED SEPT. & DEC. 1966
REFERENCE F.B. 3291-5-139
JOB NUMBER 0897.03
INDEX MAP NO. 70

REVISION	NO.	BY	DATE

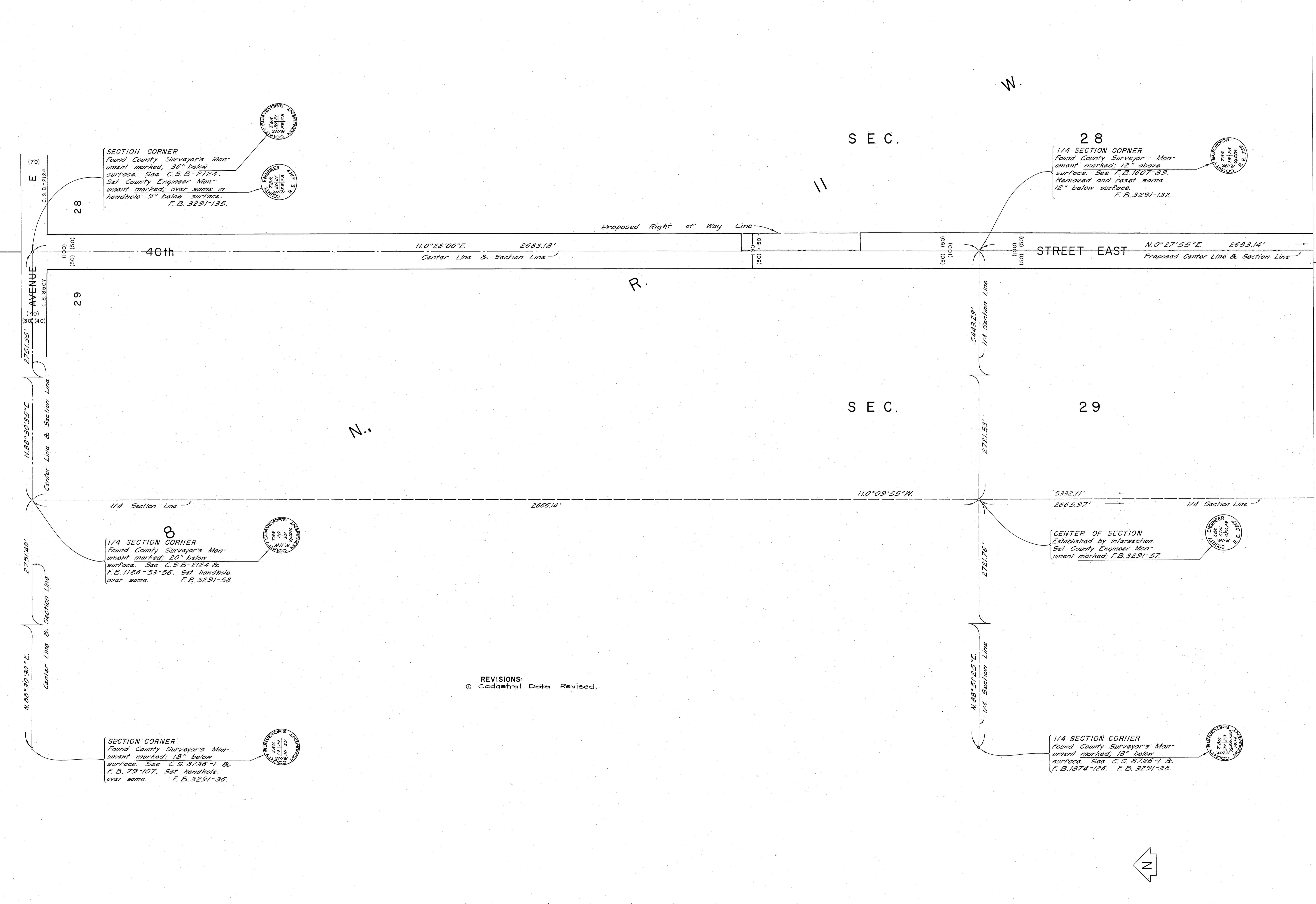


REVISIONS:
 (1) Cadastral Data Revised.

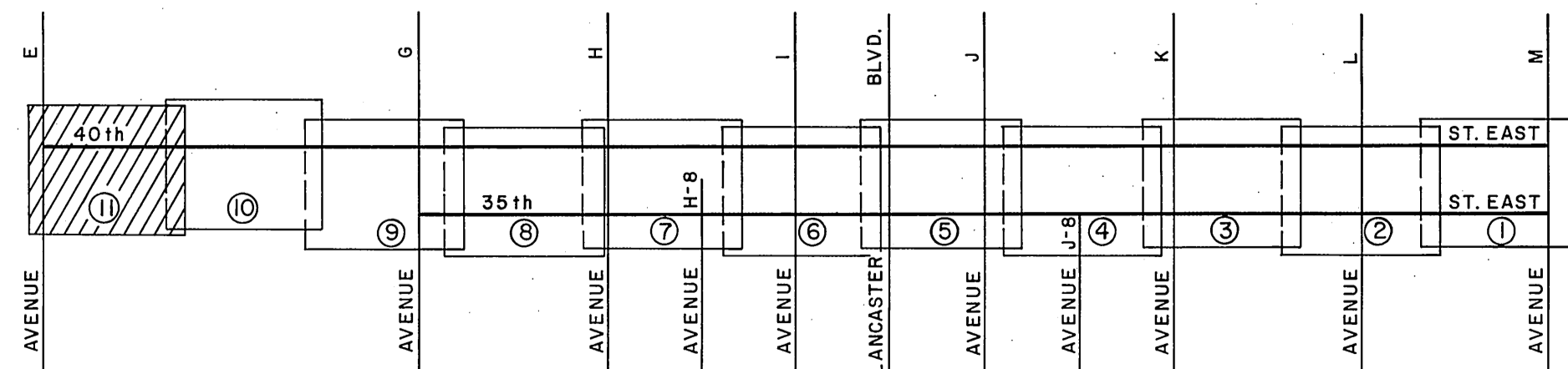


COUNTY OF LOS ANGELES DEPARTMENT OF COUNTY ENGINEER JOHN A. LAMBIE - COUNTY ENGINEER PREPARED BY SURVEY DIVISION C. E. BRUNTY - DIVISION ENGINEER J. PIERCE SURVEYED BY J. MENDONCA CHECKED BY H. HOLMAN DRAWN BY S. BRIONES	ALIGNMENT MAP OF 40th STREET EAST FROM AVENUE M TO AVENUE G		COUNTY SURVEYOR'S MAP NO. B-5063 SHEET 10 OF 11 SHEETS FILED: <i>B-12</i> , 1969 <i>Henry Mendonca</i> DEPUTY SURVEYED SEPT. 8, DEC. 1966 REFERENCE F. B. 3291-5 - 139	REVISION NO. 1 BY A.M. DATE 5-9-76
	BASIS OF BEARINGS THE BEARING OF AVENUE G (S.89°36'10"W.) AS SHOWN ON C.S.B-3021-5.			JOB NUMBER 0075-03 INDEX MAP NO. 70
	COUNTY ENGINEER DEPUTY SURVEYED REFERENCE			
	COUNTY ENGINEER DEPUTY SURVEYED REFERENCE			

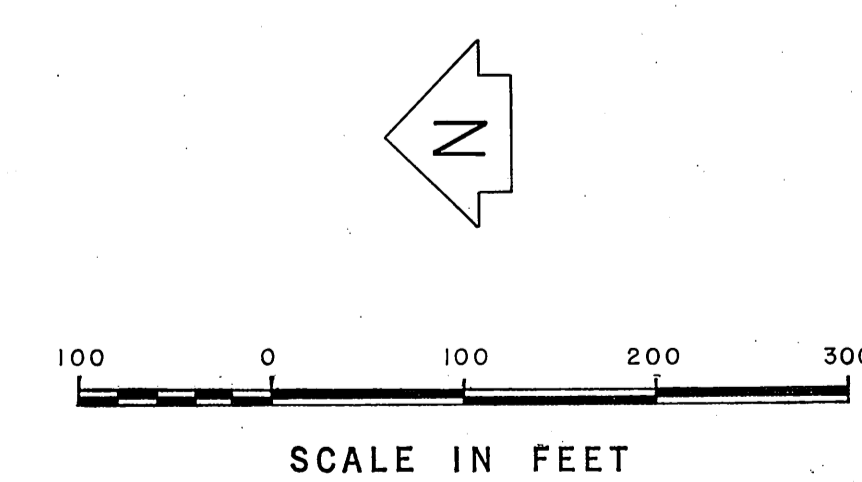
NOTE: THE ALIGNMENT OF AVENUE E, A MAJOR HIGHWAY, AS PROPOSED WITHIN THIS MAP, HAS NOT BEEN ESTABLISHED AT THE TIME OF THE FILING OF THIS MAP.



REVISIONS:
① Cadastral Data Revised.



VICINITY MAP
NOT TO SCALE



COUNTY OF LOS ANGELES DEPARTMENT OF COUNTY ENGINEER JOHN A. LAMBIE - COUNTY ENGINEER PREPARED BY SURVEY DIVISION C. E. BRUNTY - DIVISION ENGINEER + PIERCE SURVEYED BY J. MENDONCA CHECKED BY H. HOLMAN DRAWN BY S. BRIONES	ALIGNMENT MAP OF 40th STREET EAST FROM AVENUE M TO AVENUE G		COUNTY SURVEYOR'S MAP NO. B-5063 SHEET 11 OF 11 SHEETS FILED: 12-16-1966 <i>George J. Franciscan</i> COUNTY ENGINEER	REVISION NO. BY DATE ① A.M. 9-9-78
	BASIS OF BEARINGS THE BEARING OF AVENUE G (S.89°36'10"W.) AS SHOWN ON C.S.B-3021-5.		SURVEYED & DEC. 1966 REFERENCE F. B. 3291-5-139	
			JOB NUMBER 0075-40	INDEX MAP NO. 70