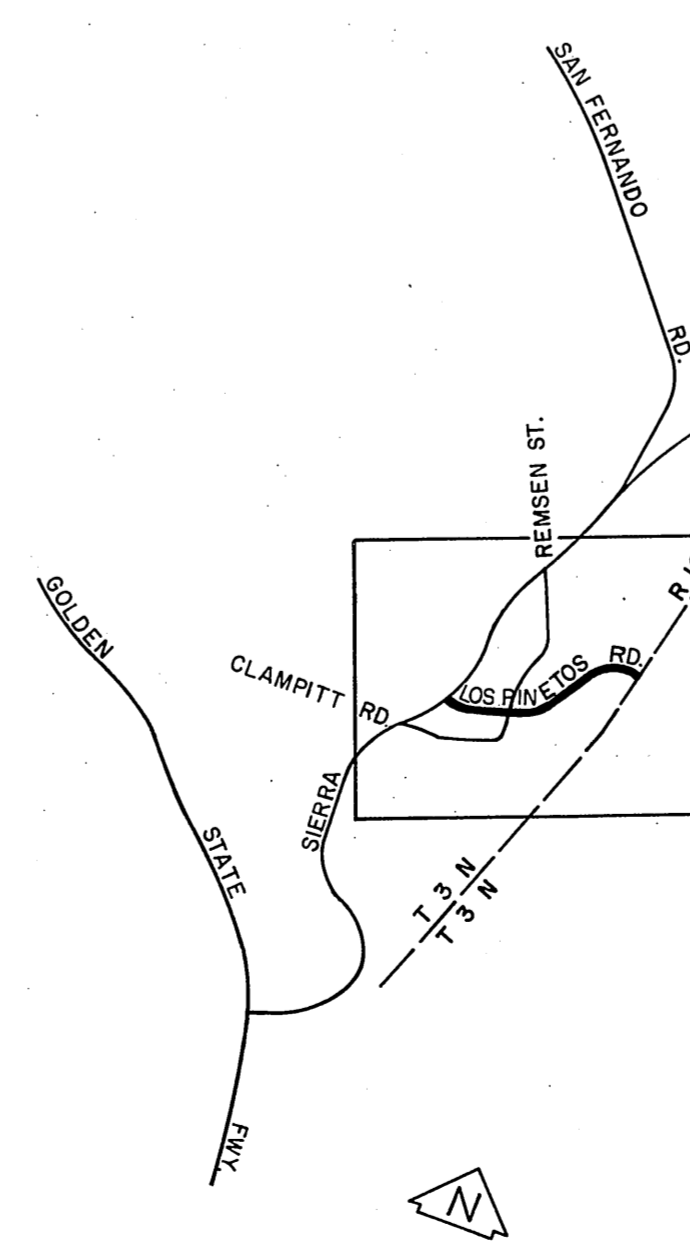
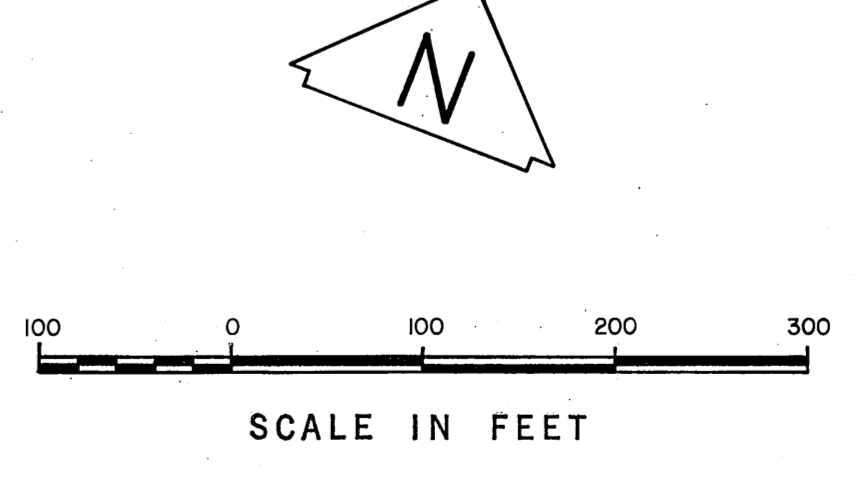


NOTE:
THE ALIGNMENT OF LOS PINETOS ROAD,
A SECONDARY HIGHWAY AS PROPOSED,
ON THE MASTER PLAN OF HIGHWAYS
HAD NOT BEEN ESTABLISHED AT THE
TIME OF THE FILING OF THIS MAP.

SECTION CORNER
Found County Surveyor's monument
marked. See F.B. 370-48 and C.S.B. 468-3.
F.B. 3205-78



COUNTY OF LOS ANGELES DEPARTMENT OF COUNTY ENGINEER JOHN A. LAMBIE - COUNTY ENGINEER PREPARED BY SURVEY DIVISION C. E. BRUNTY - DIVISION ENGINEER SURVEYED BY J. G. RANDALL CHECKED BY R. G. HILARIO DRAWN BY G. BOYER - S. KURACHI	ALIGNMENT MAP OF LOS PINETOS ROAD FROM EAST LINE SECTION 12, T3N, R16W TO SIERRA HIGHWAY BASIS OF BEARINGS CALIFORNIA COORDINATE SYSTEM, ZONE 7		COUNTY SURVEYOR'S MAP NO. B-5064 SHEET 1 OF 1 SHEET FILED <u>8-27</u> , 19 <u>62</u> DEPUTY SURVEYED APRIL, 1968 F.B. 3205-63-84	REVISION NO. BY DATE
	JOB NUMBER 0036-54		INDEX MAP NO. 234-117	