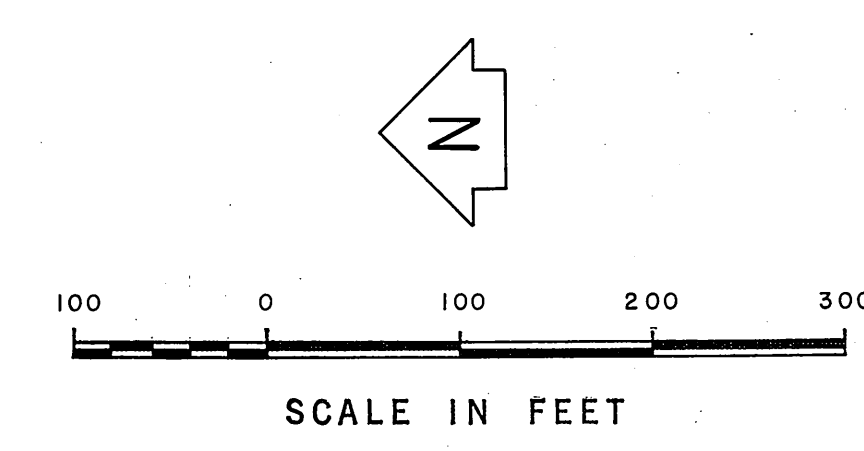
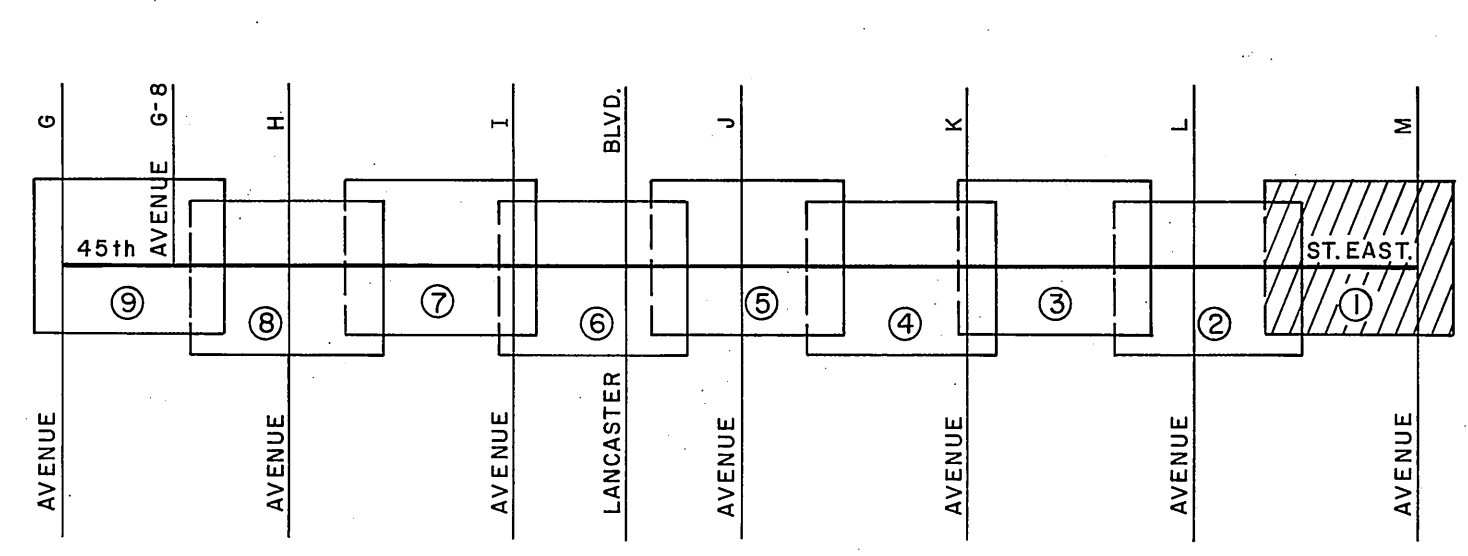
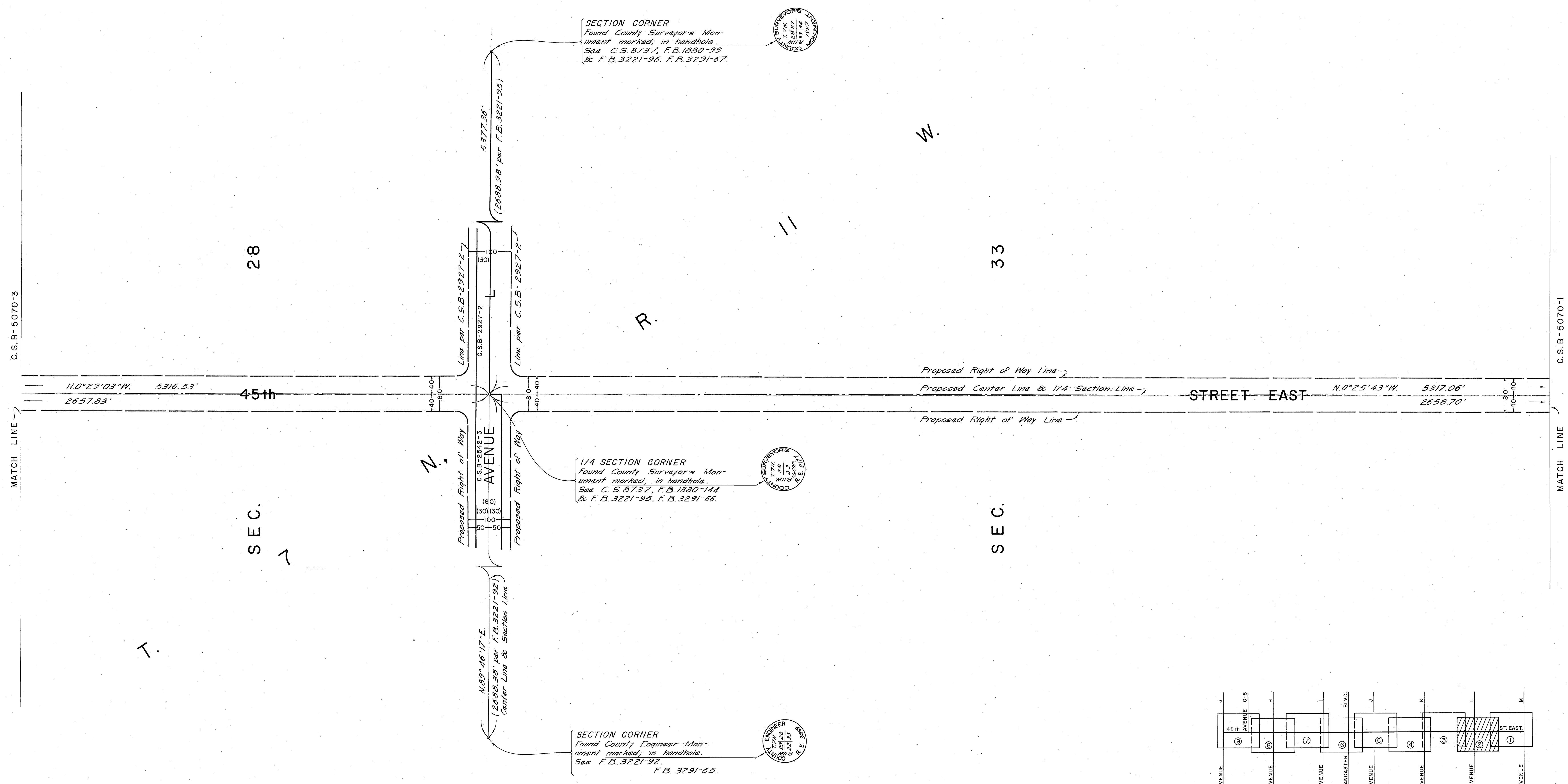


C.S.B-5070-2  
MATCH LINE

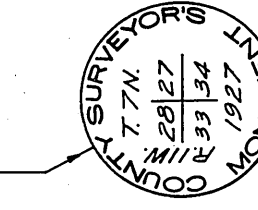
SEC.



COUNTY OF LOS ANGELES <b>DEPARTMENT OF COUNTY ENGINEER</b> JOHN A. LAMBIE - COUNTY ENGINEER PREPARED BY SURVEY DIVISION C. E. BRUNTY - DIVISION ENGINEER SURVEYED BY J. PIERCE & M. MEDONICA CHECKED BY H. HOLMAN DRAWN BY S. BRIONES	<b>ALIGNMENT MAP OF</b> <b>45th STREET EAST</b> FROM AVENUE M TO AVENUE G BASIS OF BEARINGS THE BEARING OF 40th STREET EAST (N.0°28'23"W.) AS SHOWN ON C.S.B-5063-1.		COUNTY SURVEYOR'S MAP NO. <b>B-5070</b> SHEET 1 OF 9 SHEETS FILED <u>11-25</u> , 19 <u>62</u> DEPUTY SURVEYED SEPT. & DEC. 1966 REFERENCE F.B. 3291 - 5 - 139 JOB NUMBER 0097.04 INDEX MAP NO. 70	REVISION NO. BY DATE



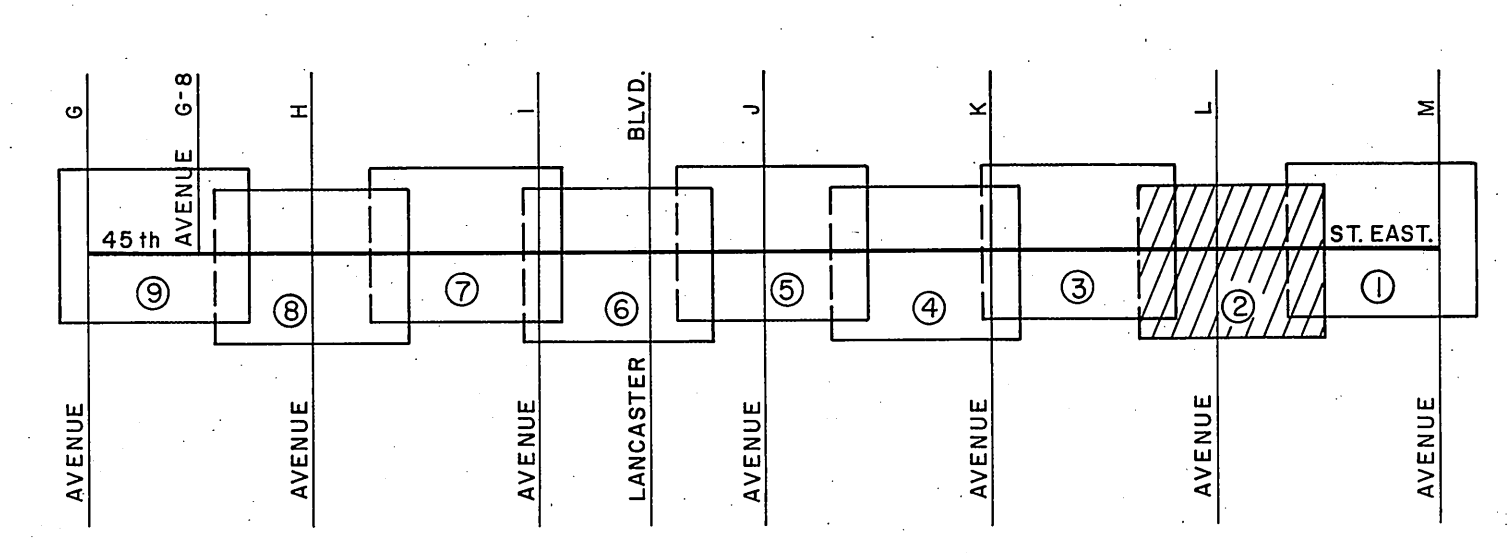
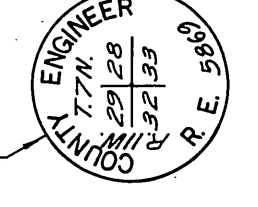
SECTION CORNER  
 Found County Surveyor's Monument marked in handhole.  
 See C.S. 2927, F.B. 1890-99  
 & F.B. 3221-96, F.B. 3291-67.



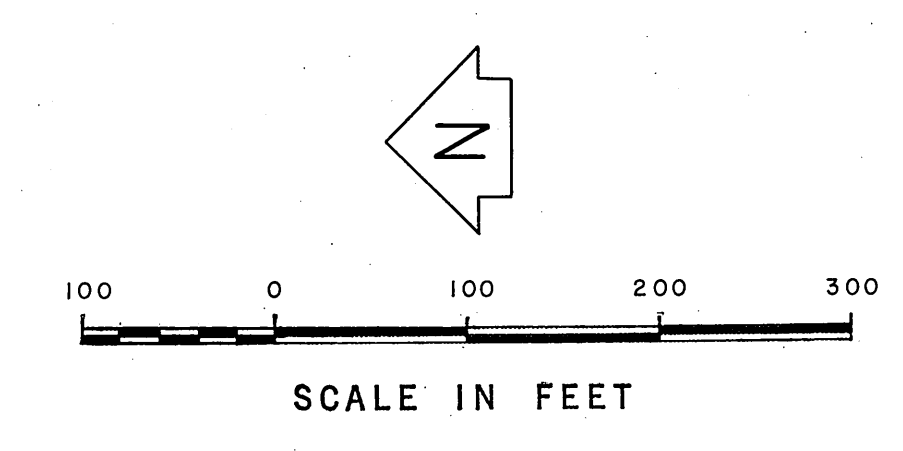
1/4 SECTION CORNER  
 Found County Surveyor's Monument marked in handhole.  
 See C.S. 2927, F.B. 1890-144  
 & F.B. 3221-96, F.B. 3291-66.



SECTION CORNER  
 Found County Engineer's Monument marked in handhole.  
 See F.B. 3221-92, F.B. 3291-65.



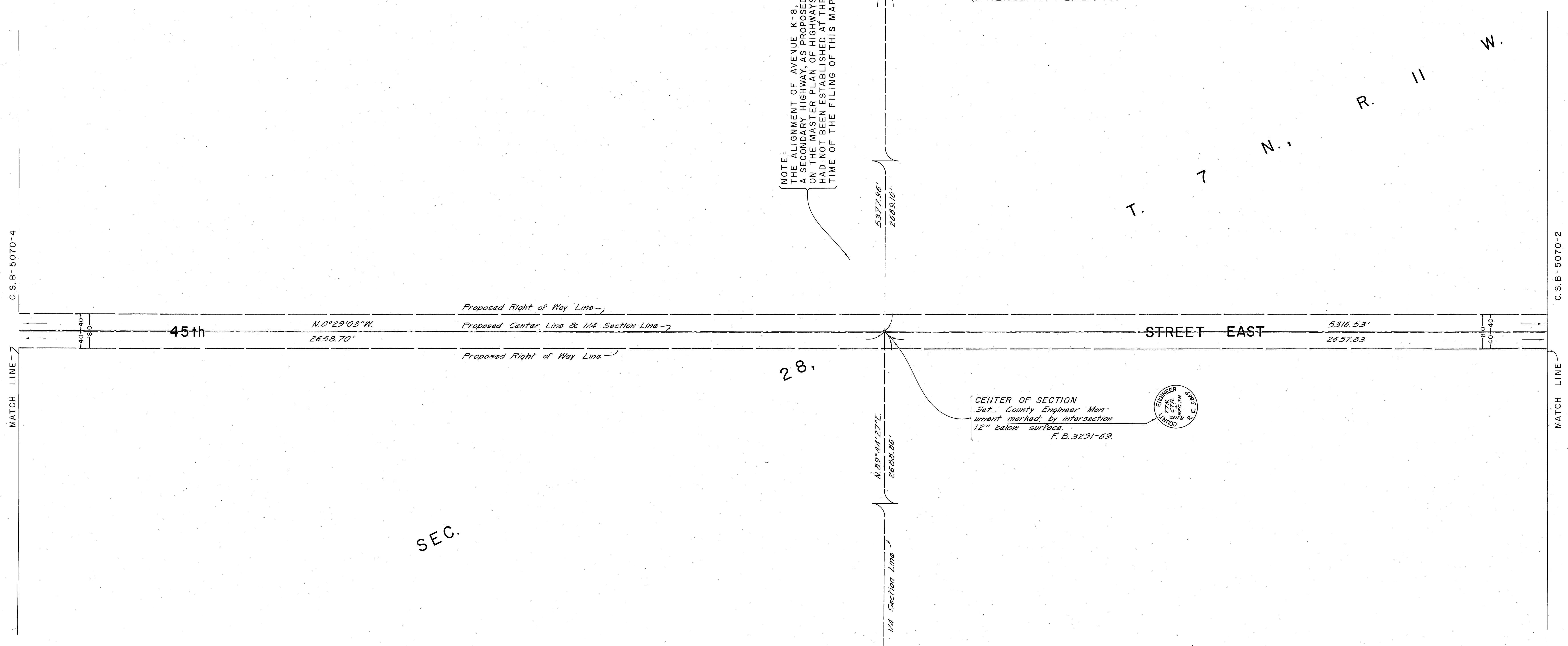
VICINITY MAP  
 NOT TO SCALE



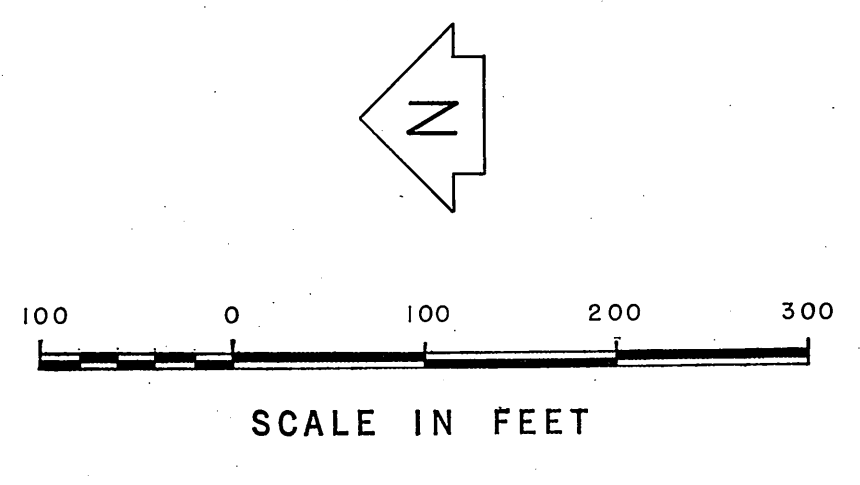
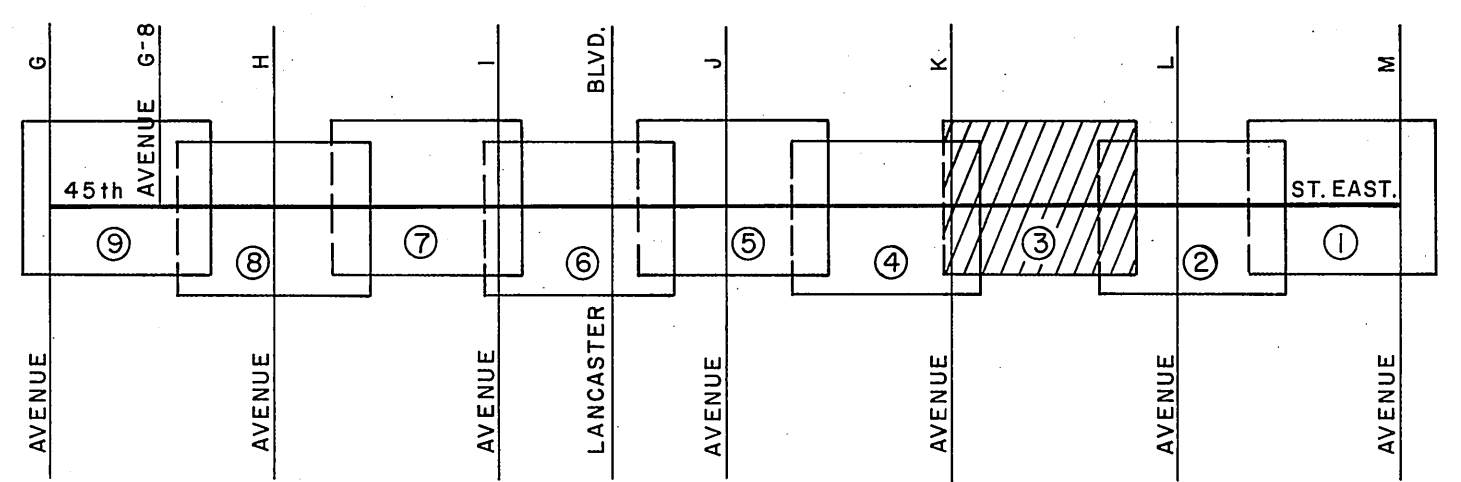
COUNTY OF LOS ANGELES DEPARTMENT OF COUNTY ENGINEER JOHN A. LAMBIE, COUNTY ENGINEER PREPARED BY SURVEY DIVISION C. E. BRUNTY, DIVISION ENGINEER SURVEYED BY J. PIERCE J. MENDONCA CHECKED BY H. HOLMAN DRAWN BY S. BRIONES	ALIGNMENT MAP OF <b>45th STREET EAST</b> FROM AVENUE M TO AVENUE G BASIS OF BEARINGS THE BEARING OF 40th STREET EAST (N.0°28'23"W.) AS SHOWN ON C.S.B-5063-1.		COUNTY SURVEYOR'S MAP NO. <b>B-5070</b> SHEET 2 OF 9 SHEETS FILED: <i>1/25</i> , 19 <i>62</i> <i>S. Briones</i> DEPUTY SURVEYED SEPT. & DEC. 1966 REFERENCE F. B. 3291 - 5 - 139	REVISION NO. BY DATE
			JOB NUMBER 0097.04	INDEX MAP NO. 70

C.S.B-5070-4  
MATCH LINE

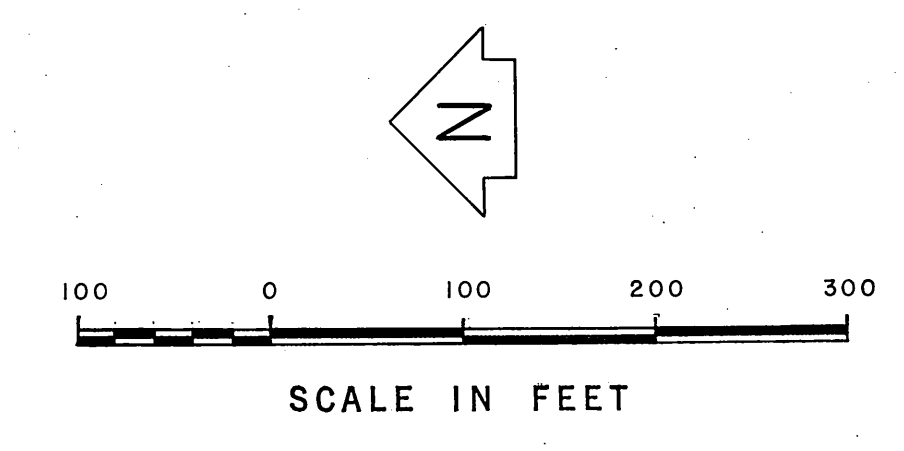
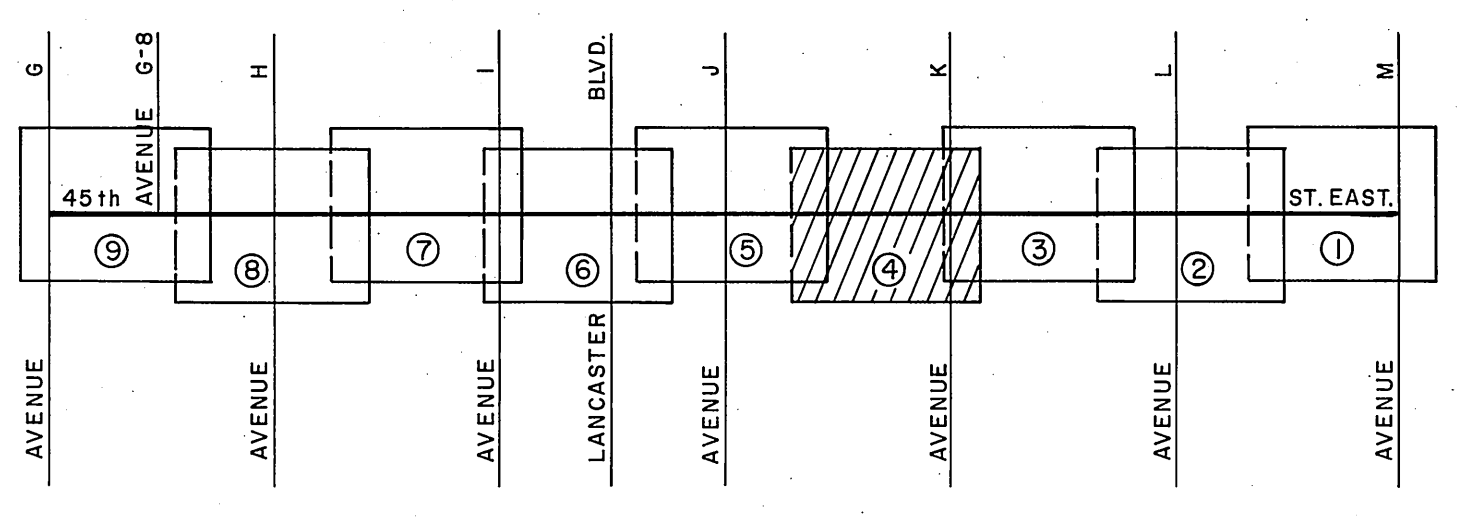
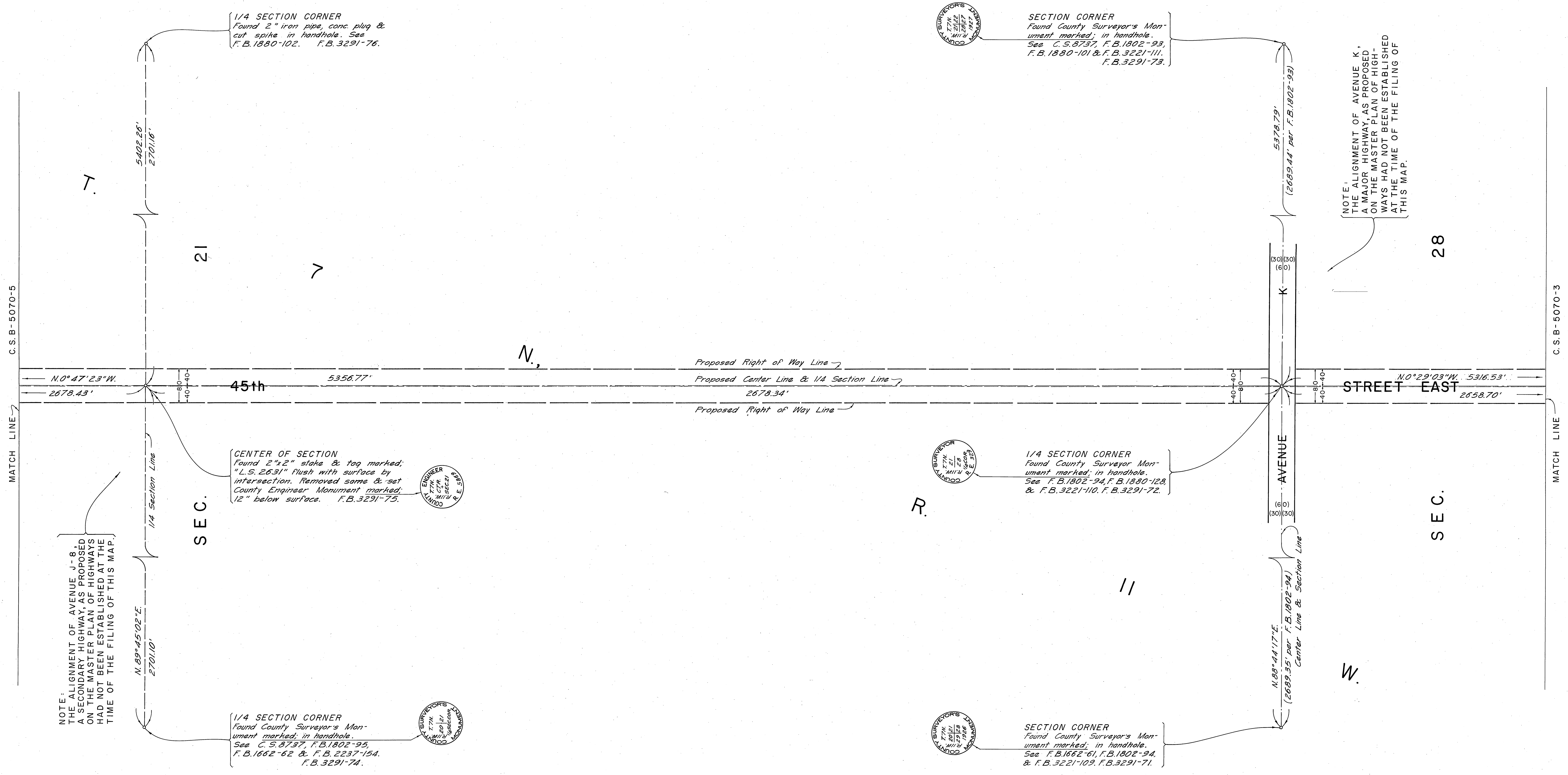
C.S.B-5070-2  
MATCH LINE



SEC.

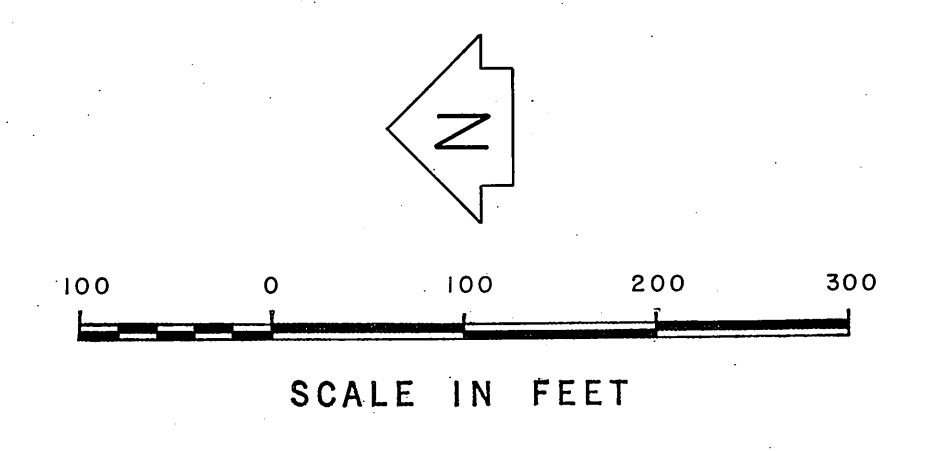
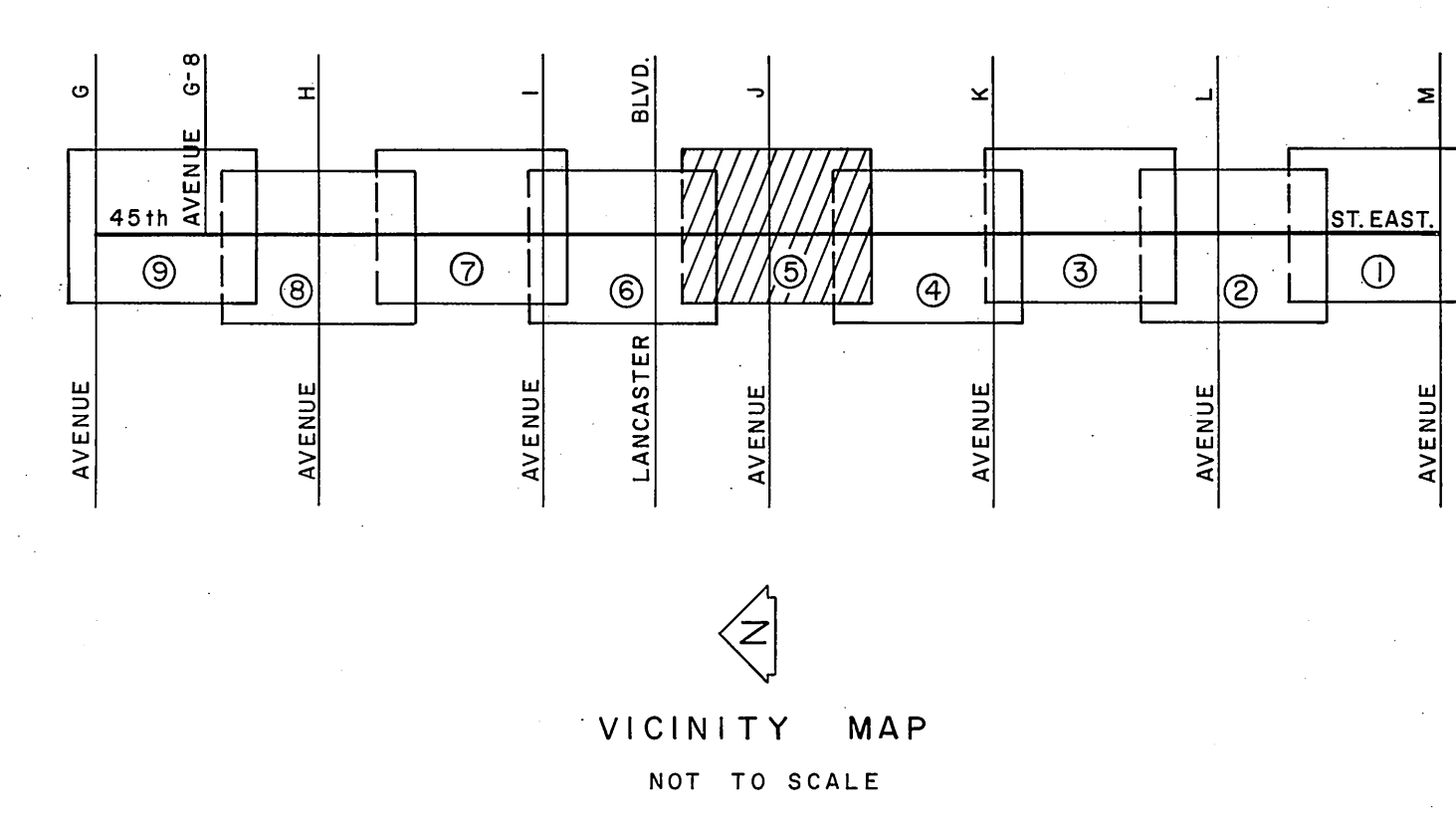
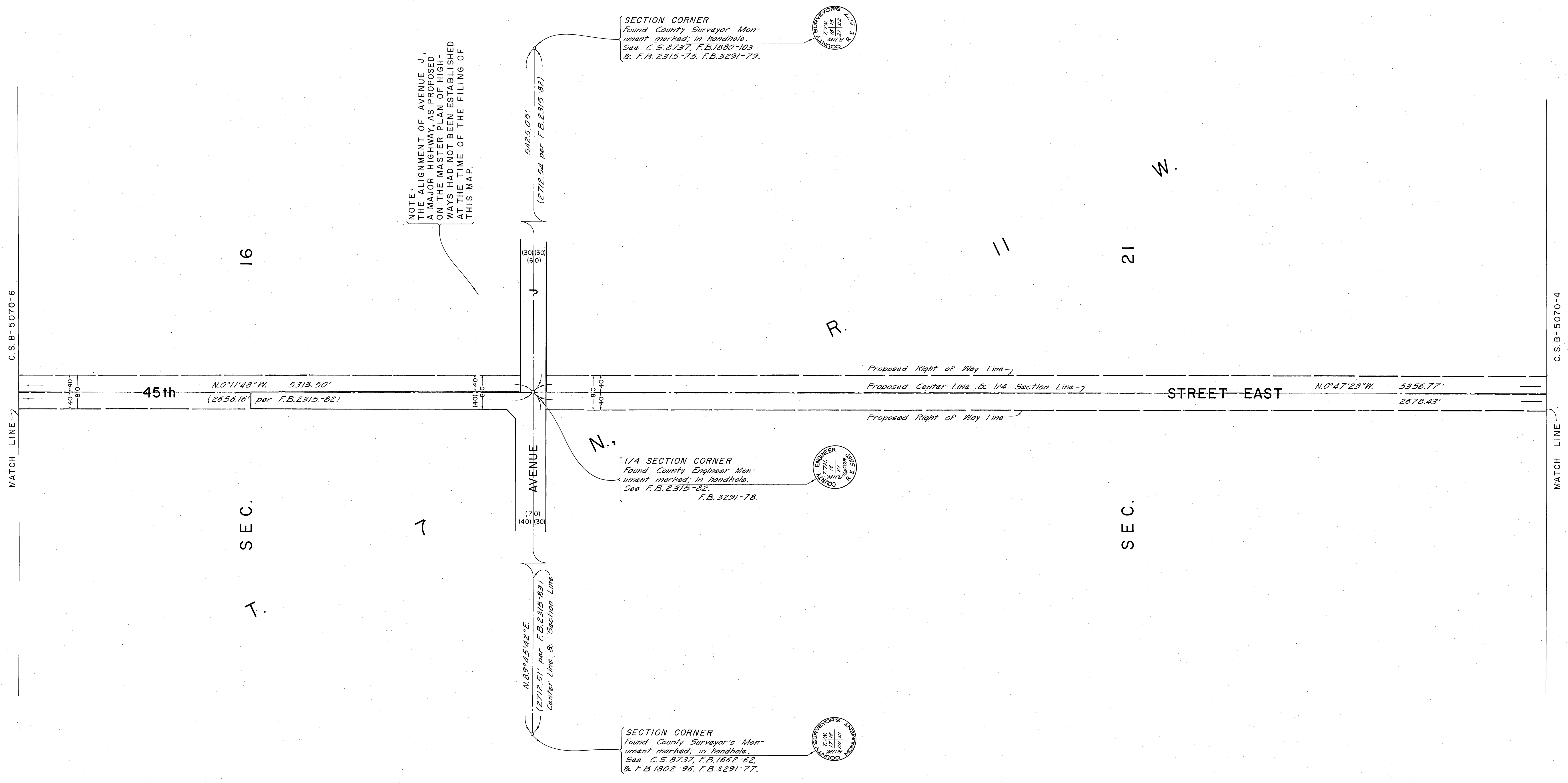


COUNTY OF LOS ANGELES DEPARTMENT OF COUNTY ENGINEER JOHN A. LAMBIE - COUNTY ENGINEER PREPARED BY SURVEY DIVISION C. E. BRUNTY - DIVISION ENGINEER SURVEYED BY J. PIERCE MENDONCA CHECKED BY H. HOLMAN DRAWN BY S. BRIGNES	ALIGNMENT MAP OF <b>45th STREET EAST</b> FROM AVENUE M TO AVENUE G BASIS OF BEARINGS THE BEARING OF 40th STREET EAST (N.0°28'23"W.) AS SHOWN ON C.S.B-5063-1.		COUNTY SURVEYOR'S MAP NO. <b>B-5070</b> SHEET 3 OF 3 SHEETS FILED: 11-25-1968 <i>Clayton J. Brantley</i> DEPUTY SURVEYED 9 DEC. 1966 REFERENCE F.B. 3291-5-139 JOB NUMBER 0097.04 INDEX MAP NO. 70	REVISION NO. BY DATE

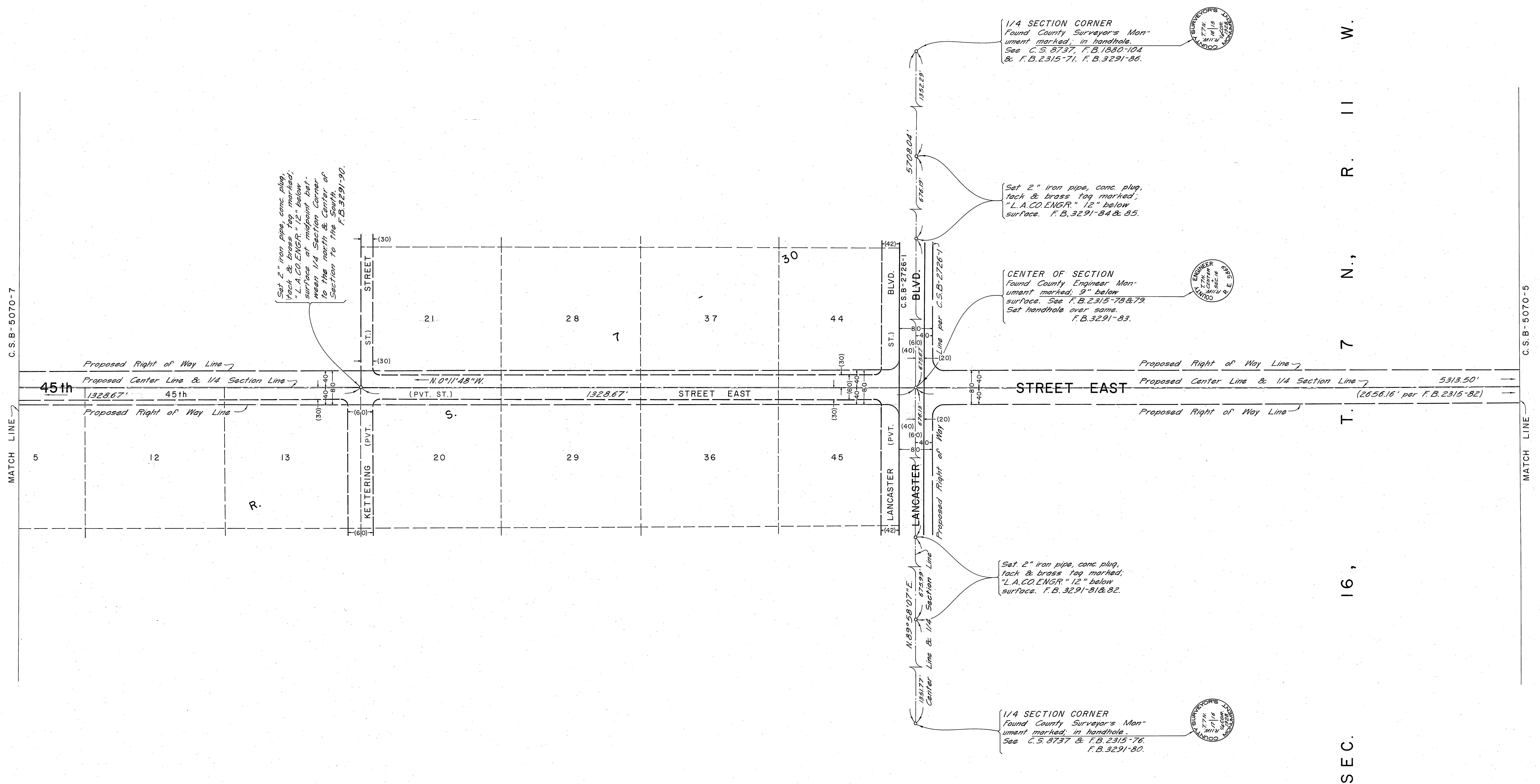


COUNTY OF LOS ANGELES DEPARTMENT OF COUNTY ENGINEER JOHN A. LAMBIE - COUNTY ENGINEER PREPARED BY SURVEY DIVISION C. E. BRUNTY - DIVISION ENGINEER J. PIERCE SURVEYED BY J. MENDONÇA CHECKED BY H. HOLMAN DRAWN BY S. BRIONES	ALIGNMENT MAP OF <b>45th STREET EAST</b> FROM AVENUE M TO AVENUE G BASIS OF BEARINGS THE BEARING OF 40th STREET EAST (N.0°28'23"W.) AS SHOWN ON C.S.B-5063-1.		COUNTY SURVEYOR'S MAP NO. <b>B-5070</b> SHEET 4 OF 9 SHEETS FILED: 11-23-1966 DEPT. & DEC. 1966 REFERENCE F.B. 3291 - 5 - 139 JOB NUMBER 0097.04	REVISION NO. BY DATE _____ _____ _____
			SEPT. 8 DEC. 1966 DEPT. & DEC. 1966 REFERENCE F.B. 3291 - 5 - 139	
			BASIS OF BEARINGS THE BEARING OF 40th STREET EAST (N.0°28'23"W.) AS SHOWN ON C.S.B-5063-1.	INDEX MAP NO. 70





COUNTY OF LOS ANGELES DEPARTMENT OF COUNTY ENGINEER JOHN A. LAMBIE - COUNTY ENGINEER PREPARED BY SURVEY DIVISION C. E. BRUNTY - DIVISION ENGINEER SURVEYED BY J. MENDONÇA CHECKED BY H. HOLMAN DRAWN BY S. BRIONES	ALIGNMENT MAP OF <b>45th STREET EAST</b> FROM <b>AVENUE M</b> TO <b>AVENUE G</b>		COUNTY SURVEYOR'S MAP NO. <b>B-5070</b> SHEET 5 OF 9 SHEETS FILED: 11-28-66 DEPT. OF PUBLIC WORKS DEPUTY	REVISION NO. BY DATE	
	BASIS OF BEARINGS THE BEARING OF 40th STREET EAST (N.0°28'23"W.) AS SHOWN ON C.S.B-5063-1		SURVEYED 8 DEC. 1966 REFERENCE F.B. 3291-5-139		
			JOB NUMBER 0097.04	INDEX MAP NO. 70	



Set 2" iron pipe, conc plug, jack & brass tag marked, "L.A.CO.ENGR." 12" below surface at midpoint between 1/4 Section Corner to the north & center of Section to the south. F.B.3291-30.

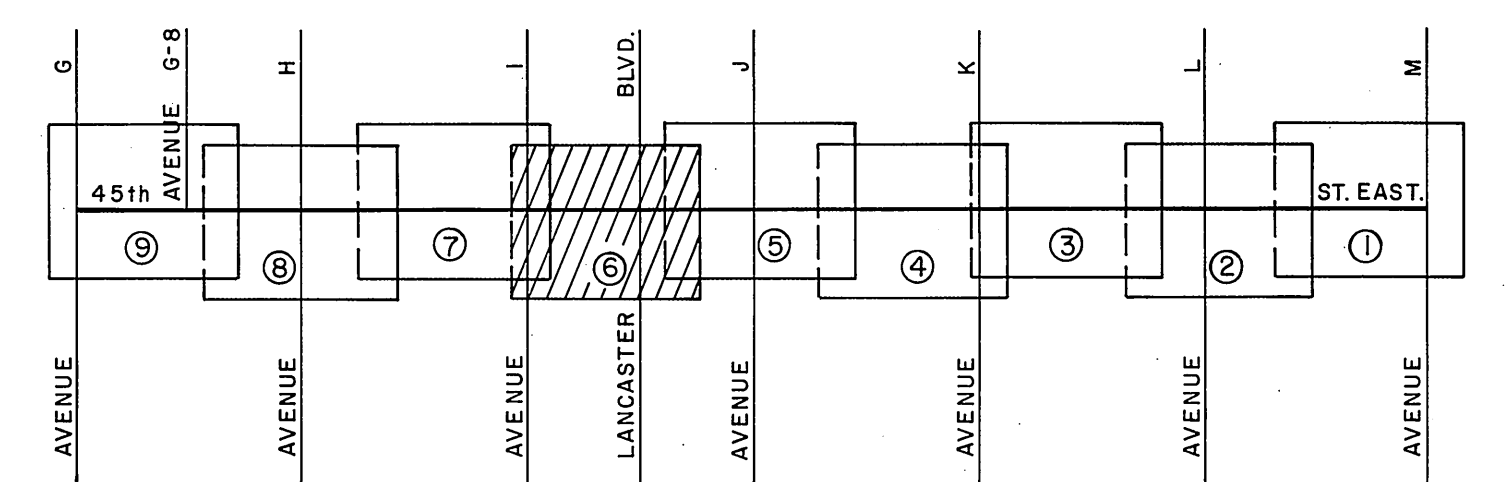
1/4 SECTION CORNER  
Found County Surveyor's Monument marked, in handhole.  
See C.S. 8737, F.B. 1830-104 & F.B. 2315-71, F.B. 3291-86.

Set 2" iron pipe, conc plug, jack & brass tag marked, "L.A.CO.ENGR." 12" below surface. F.B. 3291-84 & 85.

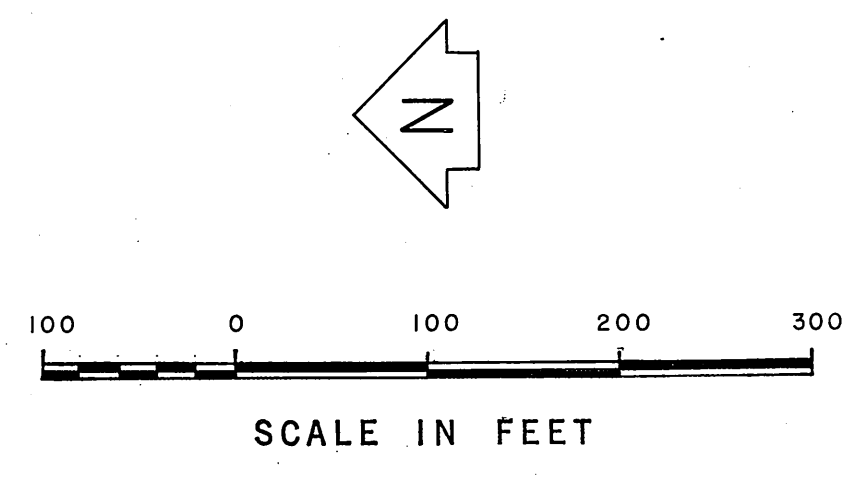
CENTER OF SECTION  
Found County Engineer Monument marked, 9" below surface. See F.B. 2315-78 & 79. Set handhole over same. F.B. 3291-83.

Set 2" iron pipe, conc plug, jack & brass tag marked, "L.A.CO.ENGR." 12" below surface. F.B. 3291-81 & 82.

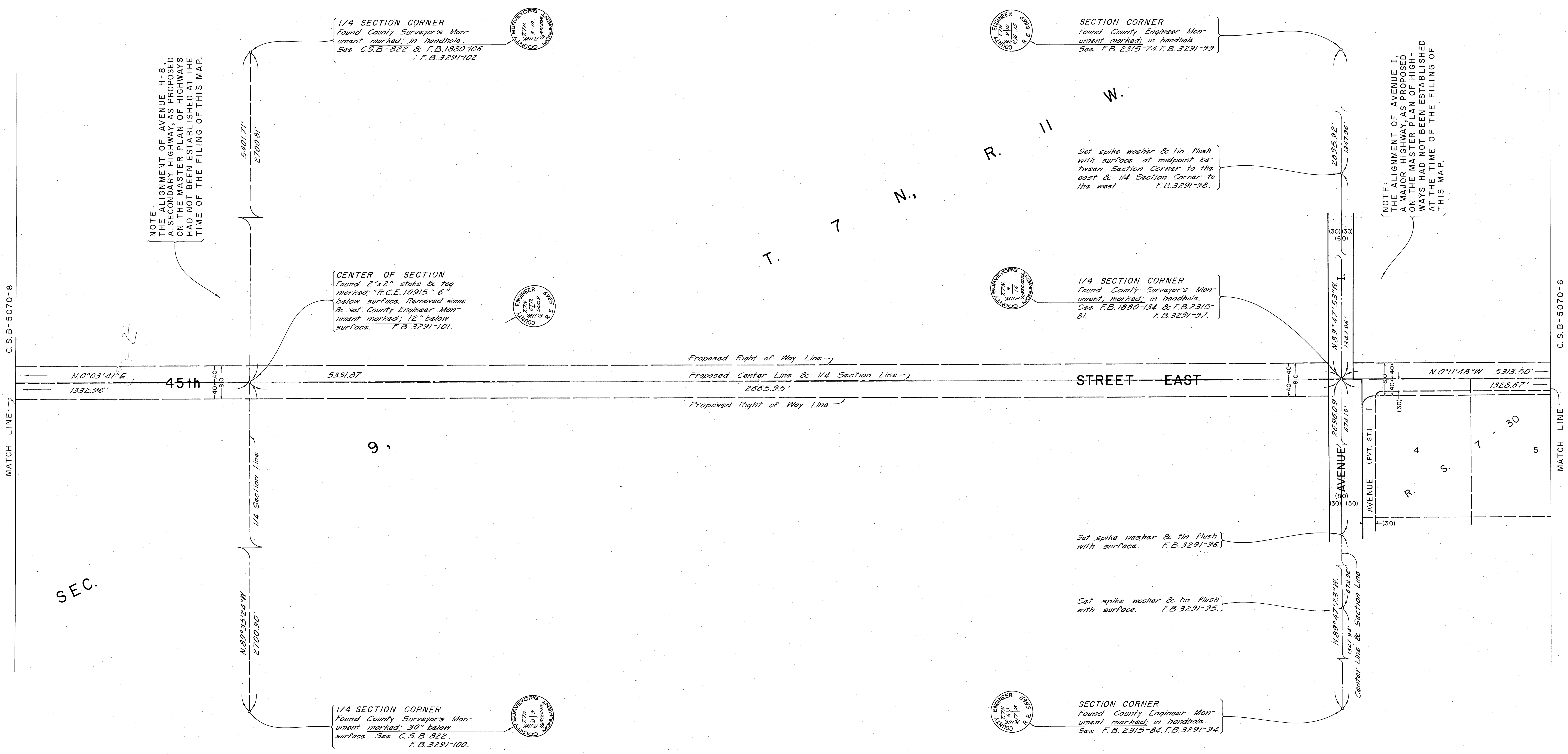
1/4 SECTION CORNER  
Found County Surveyor's Monument marked, in handhole.  
See C.S. 8737 & F.B. 2315-76. F.B. 3291-80.



VICINITY MAP  
NOT TO SCALE



COUNTY OF LOS ANGELES DEPARTMENT OF COUNTY ENGINEER JOHN A. LAMBIE, COUNTY ENGINEER PREPARED BY SURVEY DIVISION C. E. BRUNTY, DIVISION ENGINEER J. PIERCE SURVEYED BY J. MENDONÇA CHECKED BY H. HOLMAN DRAWN BY S. BRIONES	ALIGNMENT MAP OF <b>45th STREET EAST</b> FROM AVENUE M TO AVENUE G BASIS OF BEARINGS THE BEARING OF 40th STREET EAST (N.0°28'23"W.) AS SHOWN ON C.S.B-5063-1.		COUNTY SURVEYOR'S MAP NO. <b>B-5070</b> SHEET 6 OF 9 SHEETS FILED: 11-25-1966 <i>George J. Briones</i> COUNTY ENGINEER DEPT. SEPT. 8 DEC. 1966 REFERENCE F. B. 3291 - 5 - 139 JOB NUMBER 0097-04 INDEX MAP NO. 70	REVISION <table border="1"> <tr> <th>NO.</th> <th>BY</th> <th>DATE</th> </tr> <tr> <td> </td> <td> </td> <td> </td> </tr> </table>	NO.	BY	DATE			
	NO.	BY	DATE							



NOTE:  
THE ALIGNMENT OF AVENUE H-8,  
A SECONDARY HIGHWAY, AS PROPOSED  
ON THE MASTER PLAN OF HIGHWAYS  
HAD NOT BEEN ESTABLISHED AT THE  
TIME OF THE FILING OF THIS MAP.

1/4 SECTION CORNER  
Found County Surveyor's Mon-  
ument marked in handhole.  
See C.S.B-822 & F.B.1980-106  
F.B.3291-102

CENTER OF SECTION  
Found 2"x2" stake & tag  
marked "R.C.E.10915" 6"  
below surface. Removed same  
& set County Engineer Mon-  
ument marked 12" below  
surface. F.B.3291-101.

1/4 SECTION CORNER  
Found County Surveyor's Mon-  
ument marked 30" below  
surface. See C.S.B-822.  
F.B.3291-100.

SECTION CORNER  
Found County Engineer Mon-  
ument marked in handhole.  
See F.B.2315-74, F.B.3291-99

1/4 SECTION CORNER  
Found County Surveyor's Mon-  
ument marked in handhole.  
See F.B.1880-134 & F.B.2315-  
81. F.B.3291-97.

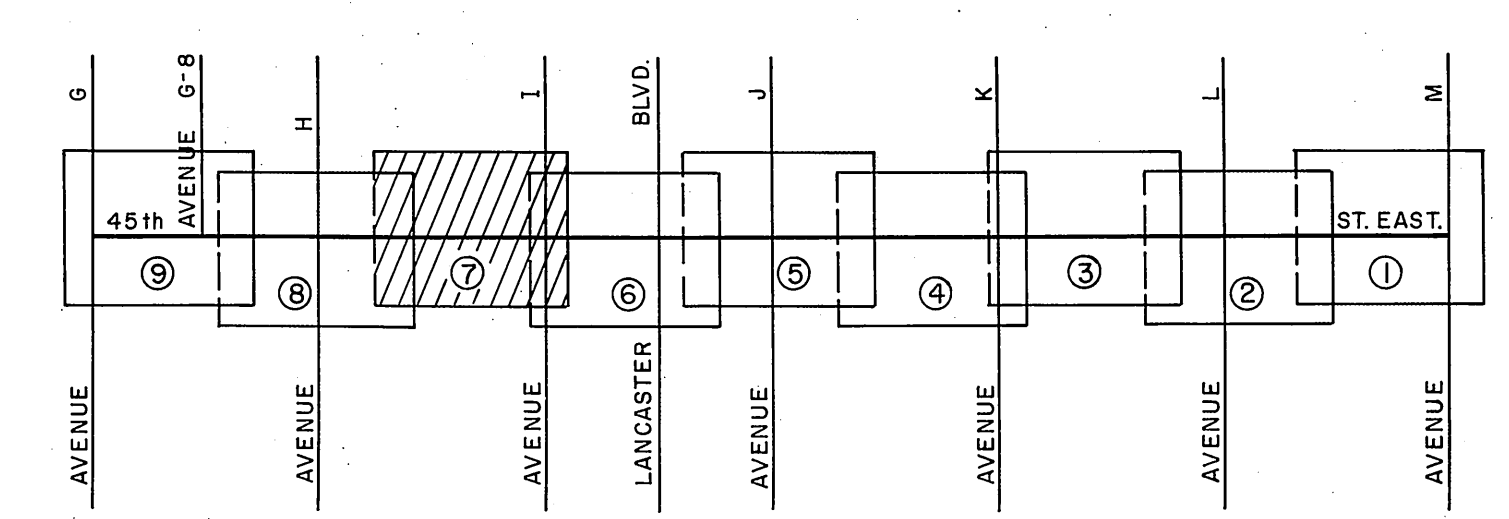
SECTION CORNER  
Found County Engineer Mon-  
ument marked in handhole.  
See F.B.2315-94, F.B.3291-94.

Set spike washer & tin flush  
with surface at midpoint be-  
tween Section Corner to the  
east & 1/4 Section Corner to  
the west. F.B.3291-98.

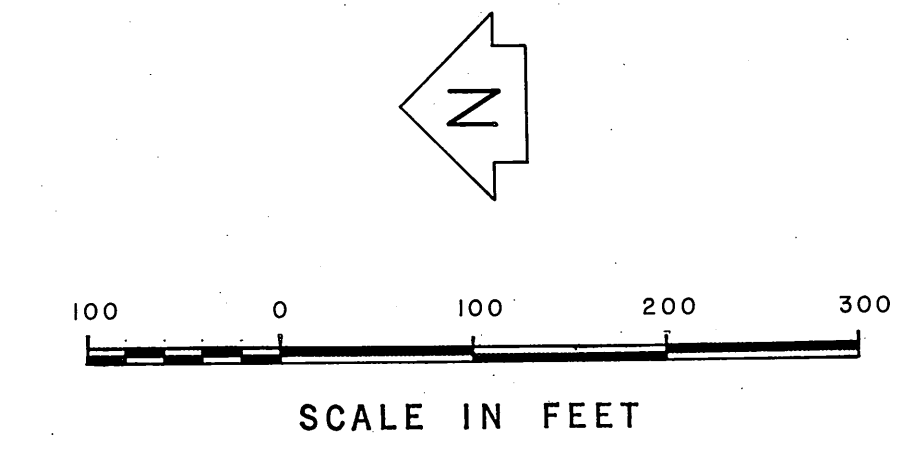
Set spike washer & tin flush  
with surface. F.B.3291-96.

Set spike washer & tin flush  
with surface. F.B.3291-95.

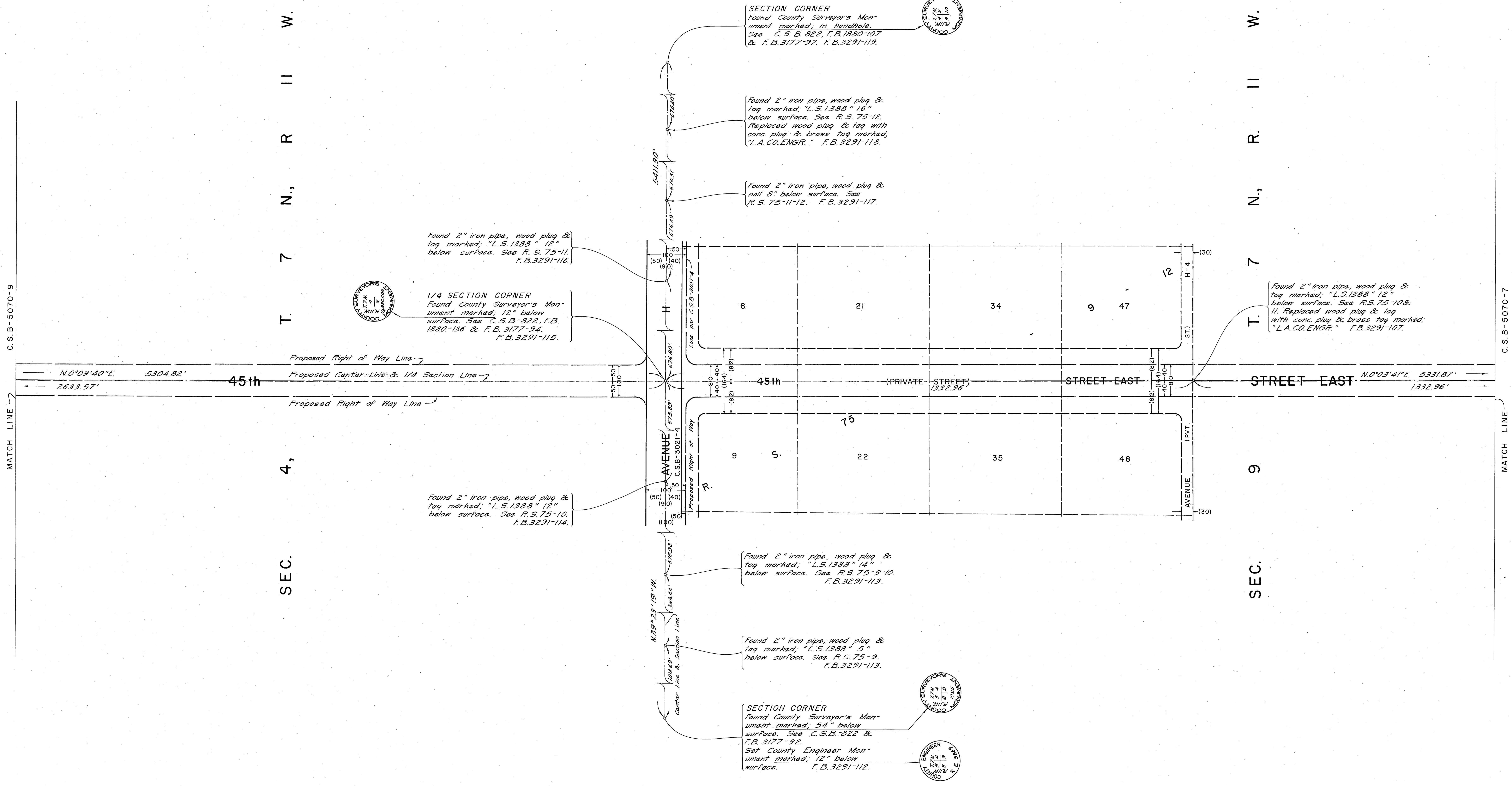
NOTE:  
THE ALIGNMENT OF AVENUE I,  
A SECONDARY HIGHWAY, AS PROPOSED  
ON THE MASTER PLAN OF HIGH-  
WAYS HAD NOT BEEN ESTABLISHED  
AT THE TIME OF THE FILING OF  
THIS MAP.



VICINITY MAP  
NOT TO SCALE

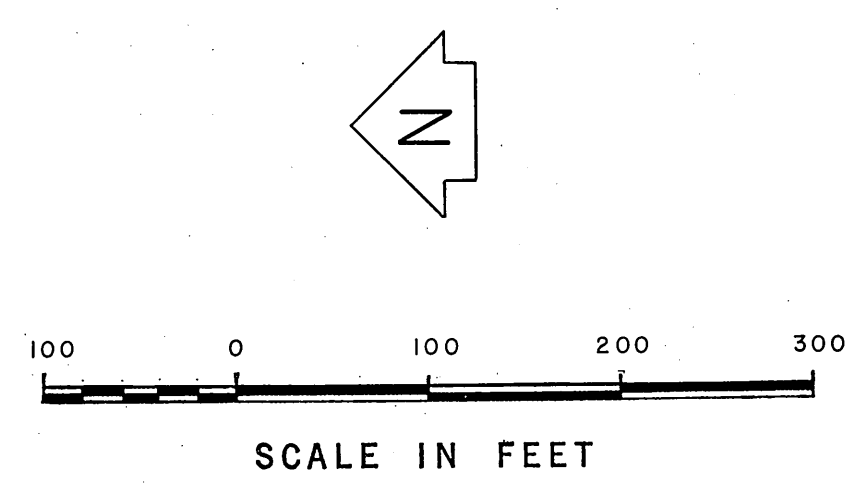
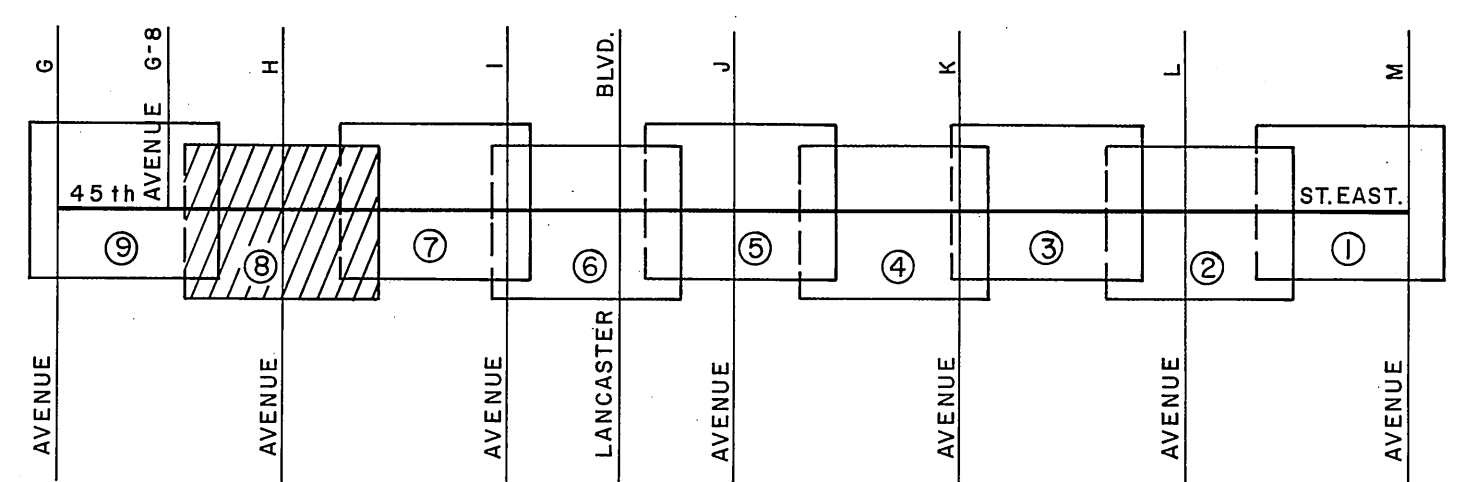


COUNTY OF LOS ANGELES <b>DEPARTMENT OF COUNTY ENGINEER</b> JOHN A. LAMBIE - COUNTY ENGINEER PREPARED BY SURVEY DIVISION C. E. BRUNY - DIVISION ENGINEER J. PIERCE MENDOCINCA SURVEYED BY H. HOLMAN CHECKED BY S. BRIONES DRAWN BY	<b>ALIGNMENT MAP OF</b> <b>45th STREET EAST</b> FROM <b>AVENUE M</b> TO <b>AVENUE G</b>		COUNTY SURVEYOR'S MAP NO. <b>B-5070</b> SHEET 7 OF 9 SHEETS FILED 11/25/66 DEPT.	REVISION NO. BY DATE	
	BASIS OF BEARINGS THE BEARING OF 40th STREET EAST (N.0°26'23"W.) AS SHOWN ON C.S.B-5063-1		SURVEYED SEPT. 8 DEC. 1966 REFERENCE F.B. 3291-5-139		
			JOB NUMBER 0097.04	INDEX MAP NO. 70	



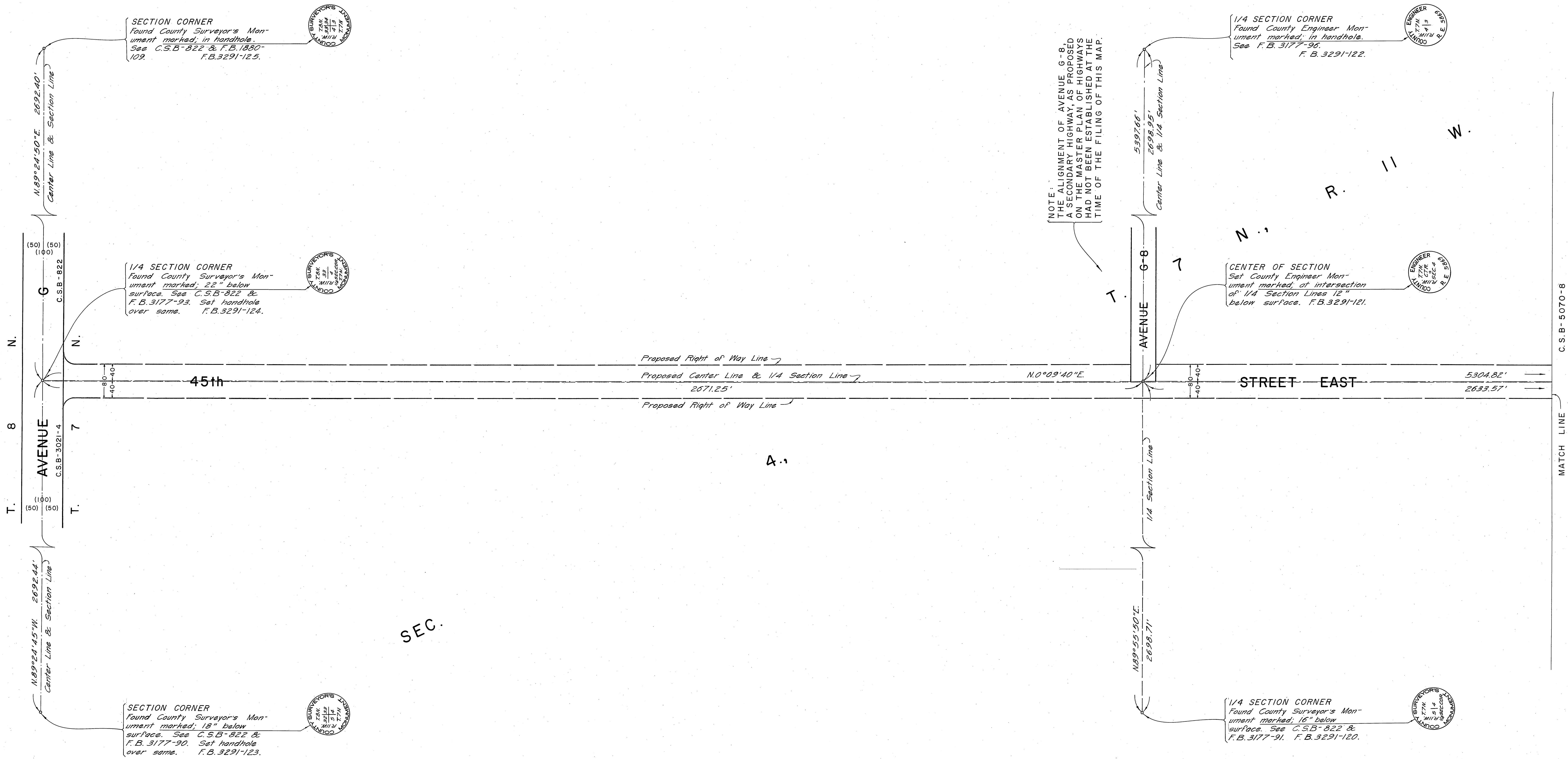
C.S.B. 5070-9

C.S.B. 5070-7



COUNTY OF LOS ANGELES <b>DEPARTMENT OF COUNTY ENGINEER</b> JOHN A. LAMBE - COUNTY ENGINEER PREPARED BY SURVEY DIVISION C. E. BRUNTY - DIVISION ENGINEER J. PIERCE SURVEYED BY J. MENDONÇA CHECKED BY H. HOLMAN DRAWN BY S. BRIONES	ALIGNMENT MAP OF <b>45th STREET EAST</b> FROM <b>AVENUE M</b> TO <b>AVENUE G</b>		COUNTY SURVEYOR'S MAP NO. <b>B-5070</b> SHEET 8 OF 9 SHEETS FILED: 11-25-1962 <i>Seay O. Pannochis</i> DEPUTY SURVEYOR SEPT. & DEC. 1966 REFERENCE F. B. 3291 - 5 - 139	REVISION NO. BY DATE
	BASIS OF BEARINGS THE BEARING OF 40th STREET EAST (N0°28'23"W.) AS SHOWN ON C.S.B-5063-1.			JOB NUMBER 00 97.04
	INDEX MAP NO. 70			NO. BY DATE
				NO. BY DATE





NOTE:  
THE ALIGNMENT OF AVENUE G-8,  
A SECONDARY HIGHWAY, AS PROPOSED  
ON THE MASTER PLAN OF HIGHWAYS  
HAD NOT BEEN ESTABLISHED AT THE  
TIME OF THE FILING OF THIS MAP.

SECTION CORNER  
Found County Surveyor's Mon-  
ument marked, in handhole.  
See C.S.B. 822 & F.B. 1280-  
109. F.B. 3291-125.

1/4 SECTION CORNER  
Found County Surveyor's Mon-  
ument marked, 22" below  
surface. See C.S.B. 822 &  
F.B. 3177-93. Set handhole  
over same. F.B. 3291-124.

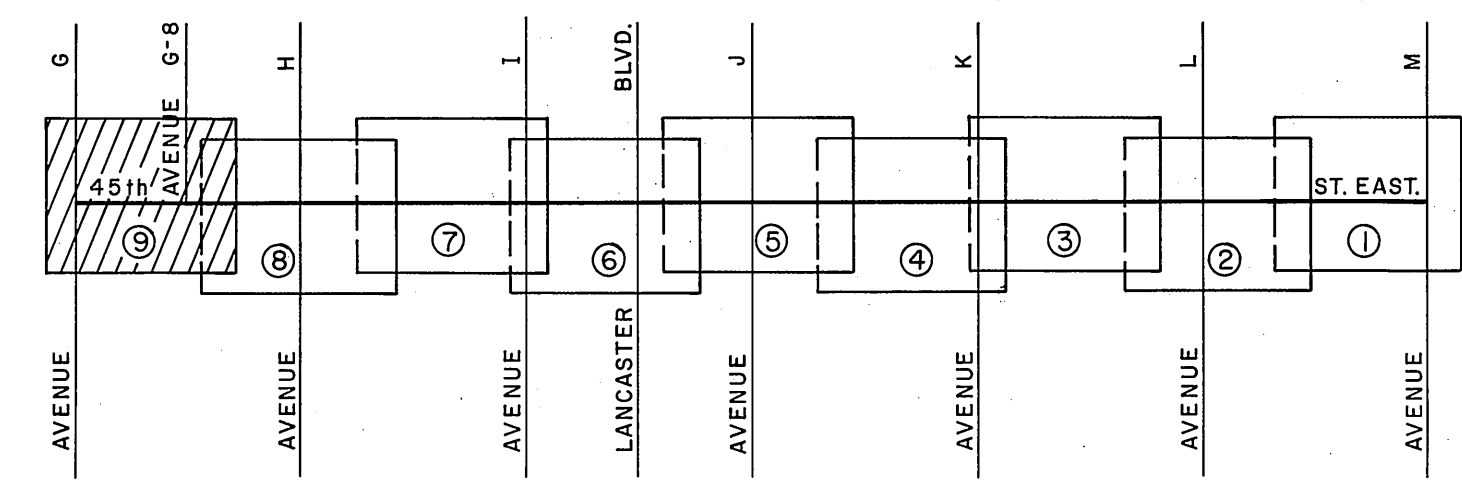
1/4 SECTION CORNER  
Found County Engineer Mon-  
ument marked, in handhole.  
See F.B. 3177-95. F.B. 3291-122.

CENTER OF SECTION  
Set County Engineer Mon-  
ument marked, at intersection  
of 1/4 Section Lines 12"  
below surface. F.B. 3291-121.

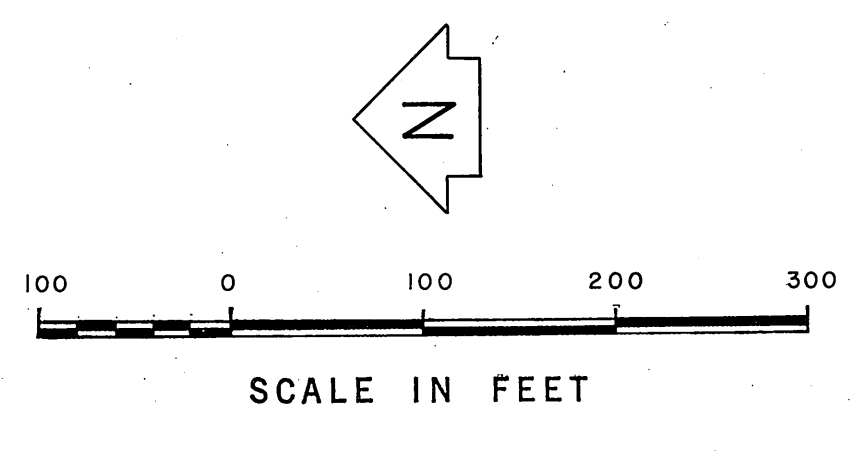
SECTION CORNER  
Found County Surveyor's Mon-  
ument marked, 18" below  
surface. See C.S.B. 822 &  
F.B. 3177-90. Set handhole  
over same. F.B. 3291-123.

1/4 SECTION CORNER  
Found County Surveyor's Mon-  
ument marked, 16" below  
surface. See C.S.B. 822 &  
F.B. 3177-91. F.B. 3291-120.

SEC.



VICINITY MAP  
NOT TO SCALE



COUNTY OF LOS ANGELES DEPARTMENT OF COUNTY ENGINEER JOHN A. LAMBIE - COUNTY ENGINEER PREPARED BY SURVEY DIVISION C. E. BRUNTY - DIVISION ENGINEER SURVEYED BY J. PIERCE J. MENDONCA CHECKED BY H. HOLMAN DRAWN BY S. BRIONES	ALIGNMENT MAP OF <b>45th STREET EAST</b> FROM AVENUE M TO AVENUE G BASIS OF BEARINGS THE BEARING OF 40th STREET EAST (N.0°28'23"W.) AS SHOWN ON C.S.B-5063-1		COUNTY SURVEYOR'S MAP NO. <b>B-5070</b> SHEET 9 OF 9 SHEETS FILED: <u>11.25, 1966</u> <i>Henry J. Thompson</i> DEPUTY SURVEYED & DEC. 1966 REFERENCE F. B. 3291 - 5 - 139 JOB NUMBER 0097.04 INDEX MAP NO. 70	REVISION NO. BY DATE