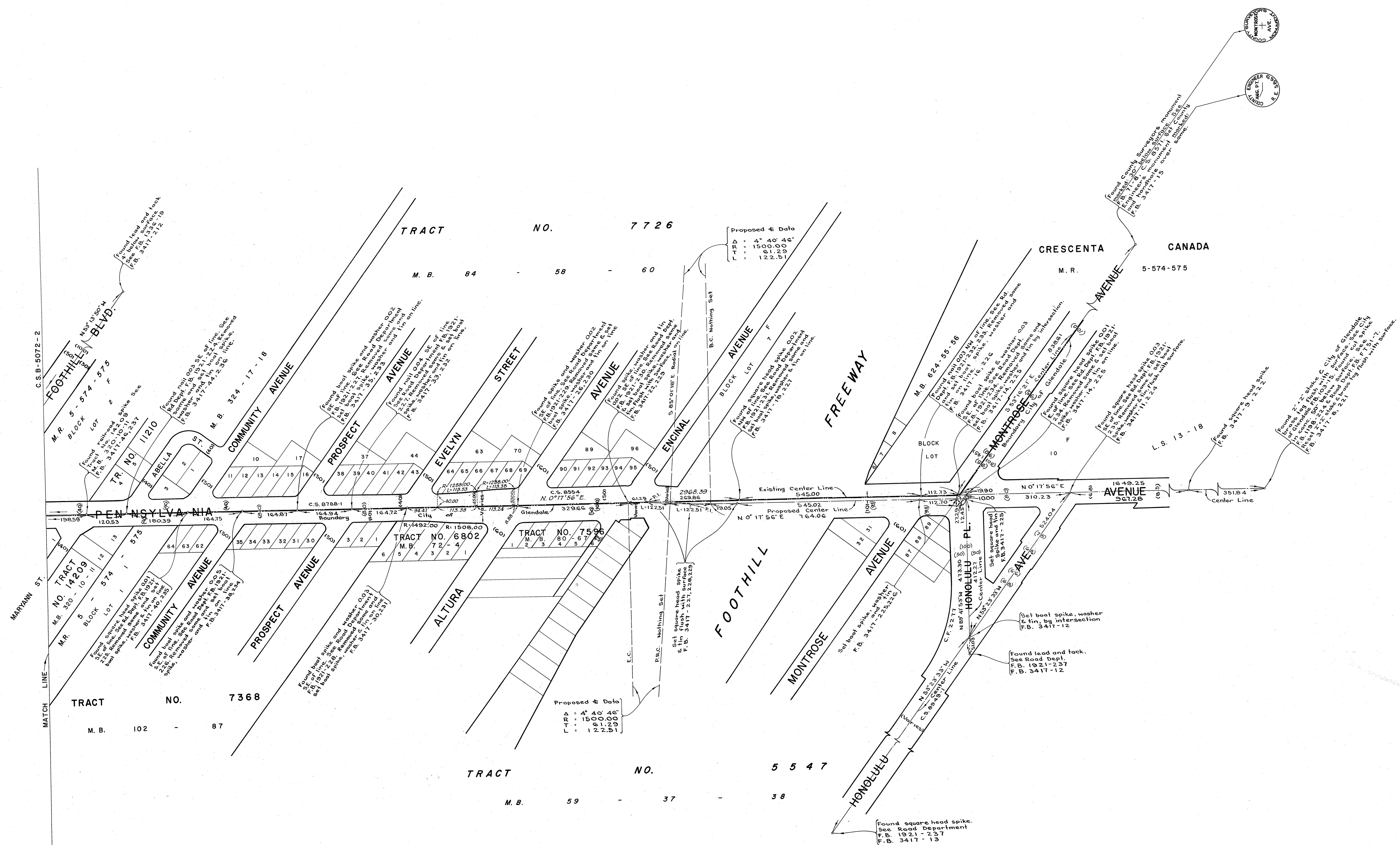
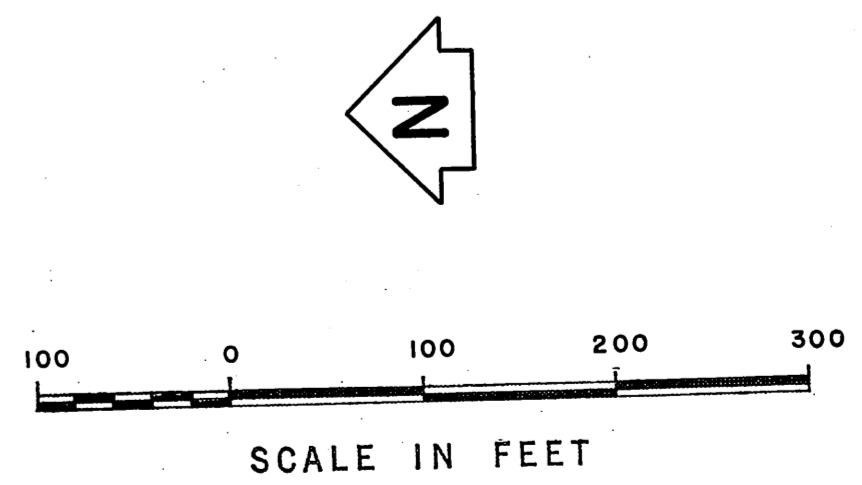
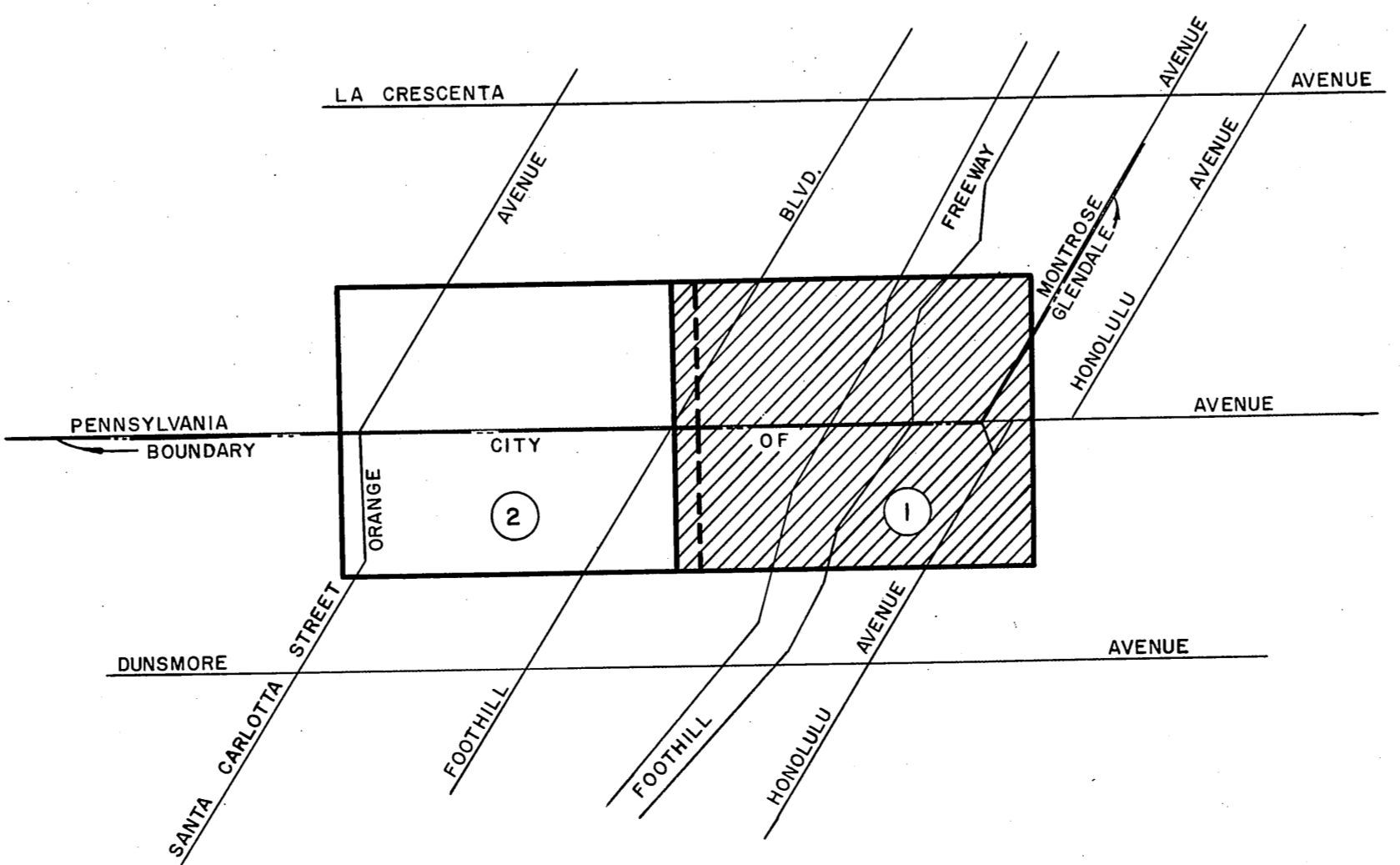


1-5702-B-2

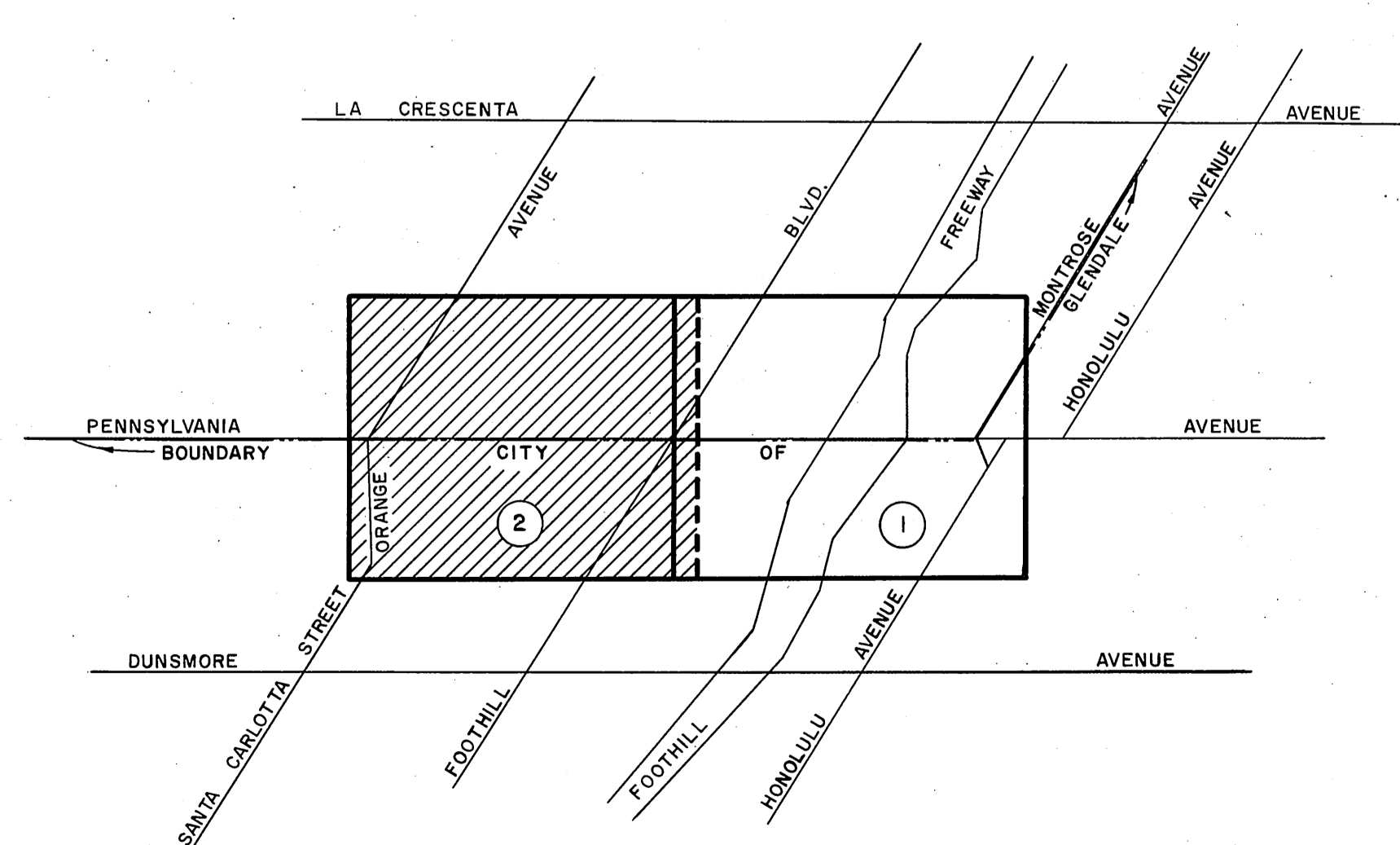
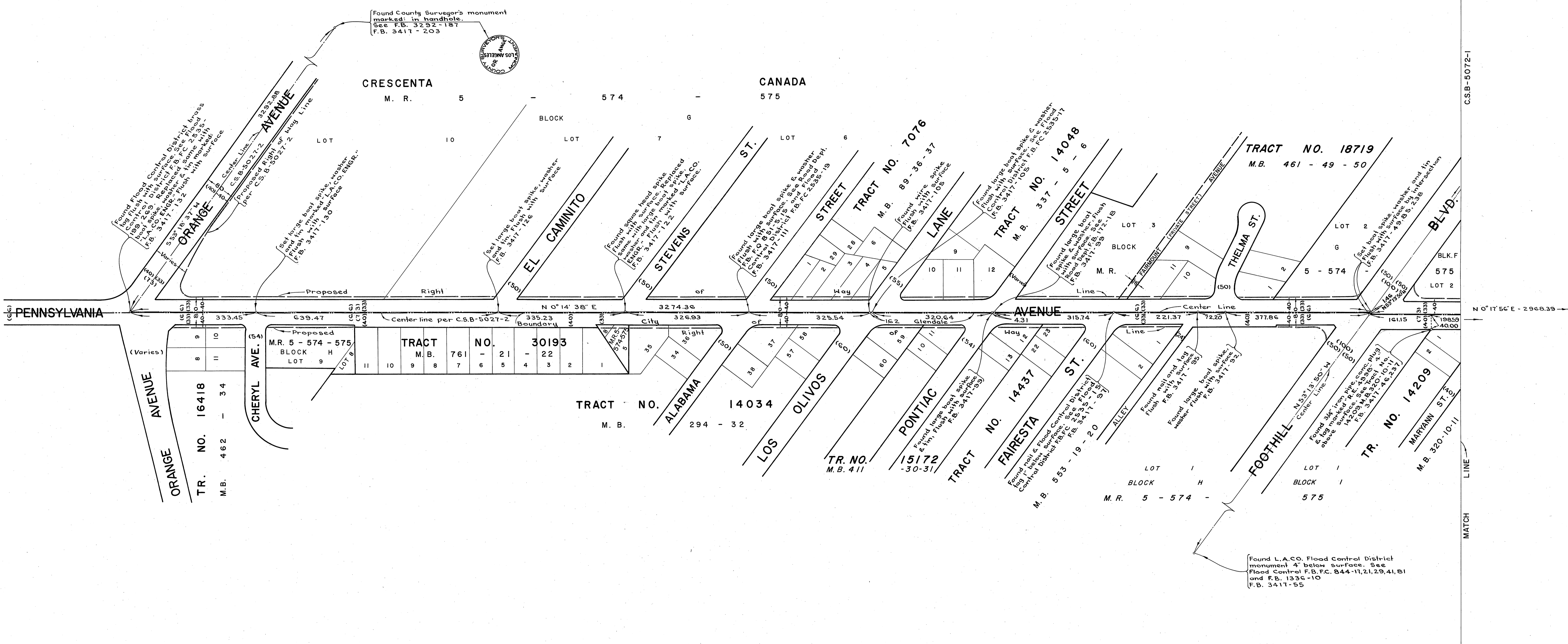


- REVISION:
- ① Proposed R/W data & ties to center line between Evelyn St. & Altura Ave. added.
 - ② Cadastral Data Revised.

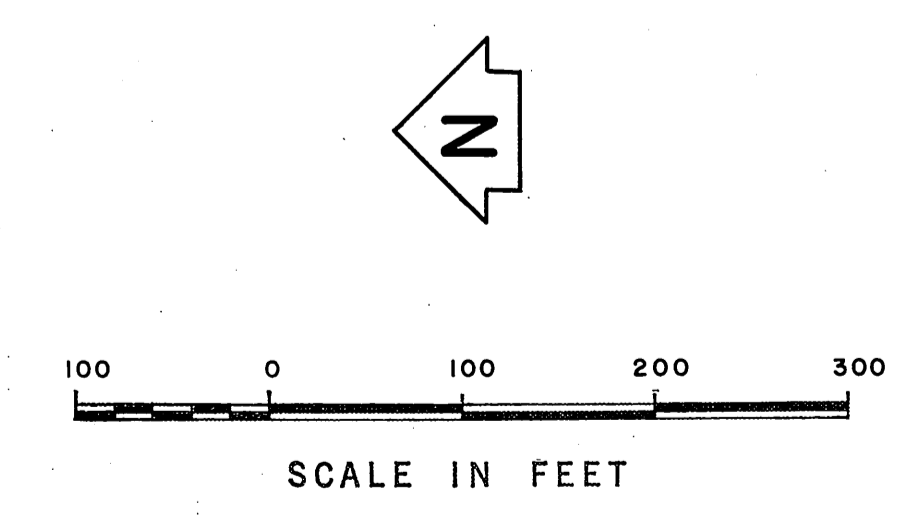


COUNTY OF LOS ANGELES DEPARTMENT OF COUNTY ENGINEER JOHN A. LAMBE, COUNTY ENGINEER PREPARED BY SURVEY DIVISION C. E. BRUNTY, DIVISION ENGINEER D. L. BURKHOLDER SURVEYED BY H. H. SPRIGGS, JR. CHECKED BY R. P. SHORT W. A. EDMONDSON G. H. BOYER DRAWN BY H. H. F. DONG	ALIGNMENT MAP OF PENNSYLVANIA AVENUE FROM MONTROSE AVENUE TO ORANGE AVENUE		COUNTY SURVEYOR'S MAP NO. B-5072 SHEET 1 OF 2 SHEETS FILED 12-11-67 BY <i>Alvin J. ...</i> SURVEYED JAN. 1967 - DEC. 1968 REFERENCE F.B. 3417 8-169 & 221-238	REVISION <table border="1"> <tr><th>NO.</th><th>BY</th><th>DATE</th></tr> <tr><td>1</td><td>M.H.</td><td>3-75</td></tr> <tr><td>2</td><td>A.M.</td><td>8-24-76</td></tr> </table>	NO.	BY	DATE	1	M.H.	3-75	2	A.M.	8-24-76
	NO.	BY	DATE										
	1	M.H.	3-75										
	2	A.M.	8-24-76										
BASIS OF BEARINGS THE BEARING OF PENNSYLVANIA AVENUE (N 0°14'38" E) AS SHOWN ON C.S.B-5027-2			JOB NUMBER 0097.25 INDEX MAP NO. 51										

C.S.B-5072-1



VICINITY MAP
NOT TO SCALE



COUNTY OF LOS ANGELES DEPARTMENT OF COUNTY ENGINEER JOHN A. LAMBIE, COUNTY ENGINEER PREPARED BY SURVEY DIVISION C. E. BRUNTY, DIVISION ENGINEER D. L. BURKHOLDER SURVEYED BY H. SPRIGGS, JR. CHECKED BY R. P. SHORT W. A. EDMONDSON G. H. BOYER H. F. DONG DRAWN BY	ALIGNMENT MAP OF PENNSYLVANIA AVENUE FROM MONTROSE AVENUE TO ORANGE AVENUE		COUNTY SURVEYOR'S MAP NO. B-5072	REVISION NO. BY DATE
	BASIS OF BEARINGS THE BEARING OF PENNSYLVANIA AVENUE (N 0°14'38" E) AS SHOWN ON C.S.B-5027-2		SHEET 2 OF 2 SHEETS FILED 12-11-62 <i>Sergio G. Gonzalez</i> COUNTY SURVEYOR JAN. 1967 - DEC. 1968	REFERENCE F.B. 3417 8-169 & 221-238 JOB NUMBER 0097.25
	INDEX MAP NO. 51		INDEX MAP NO. 51	INDEX MAP NO. 51