

Found brass rod with "X" in concrete monument 5" below surface. See F.B. 295-47, 48. Set spike, & tin over same flush with surface. F.B. 1589-210.

Found brass rod with "X" in concrete monument in a handhole. See F.B. 251-60, 135 B. F.B. 1589-203.

Set boat spike, washer, & tin flush with surface by proportion between FIR AVE. and GREVILLEA AVE. per TOWNSITE OF INGLEWOOD, M.R. 34-19-36. F.B. 1589-200.

Set boat spike, washer, & tin flush with surface by proportion between FIR AVE. and GREVILLEA AVE. per TOWNSITE OF INGLEWOOD, M.R. 34-19-36. F.B. 1589-200.

Set boat spike, washer, & tin flush with surface by proportion between FIR AVE. and GREVILLEA AVE. per TOWNSITE OF INGLEWOOD, M.R. 43-84. F.B. 1589-234.

Found square head spike flush with surface. F.B. 1589-199.

Found square head spike flush with surface. Replaced same with boat spike, washer, & tin flush with surface. See F.B. 251-32, 59, 96, & 135 A. F.B. 1589-7, & 199.

TRAVERSE STATION INGLEWOOD E-5  
Found L.A. City Monument in handhole. See F.B. 1589-8, & 208.

NOTE:  
FOR THE ALIGNMENT OF MANCHESTER AVENUE, A MAJOR HIGHWAY, AS PROPOSED ON THE MASTER PLAN OF HIGHWAYS CONTACT CITY OF INGLEWOOD.

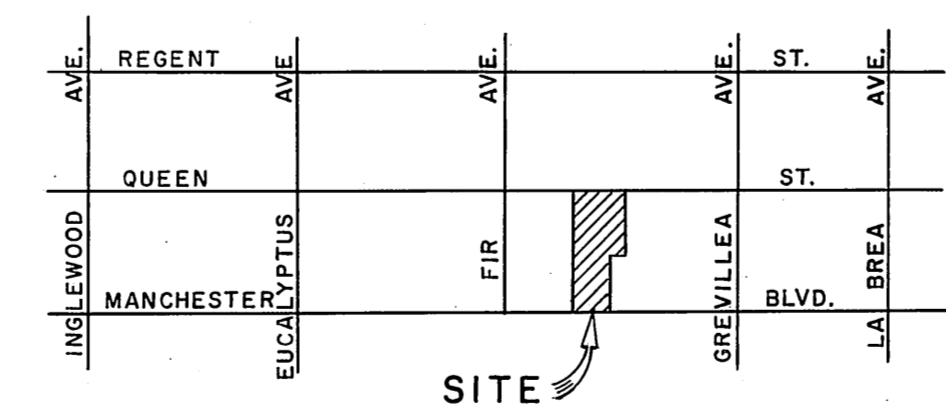
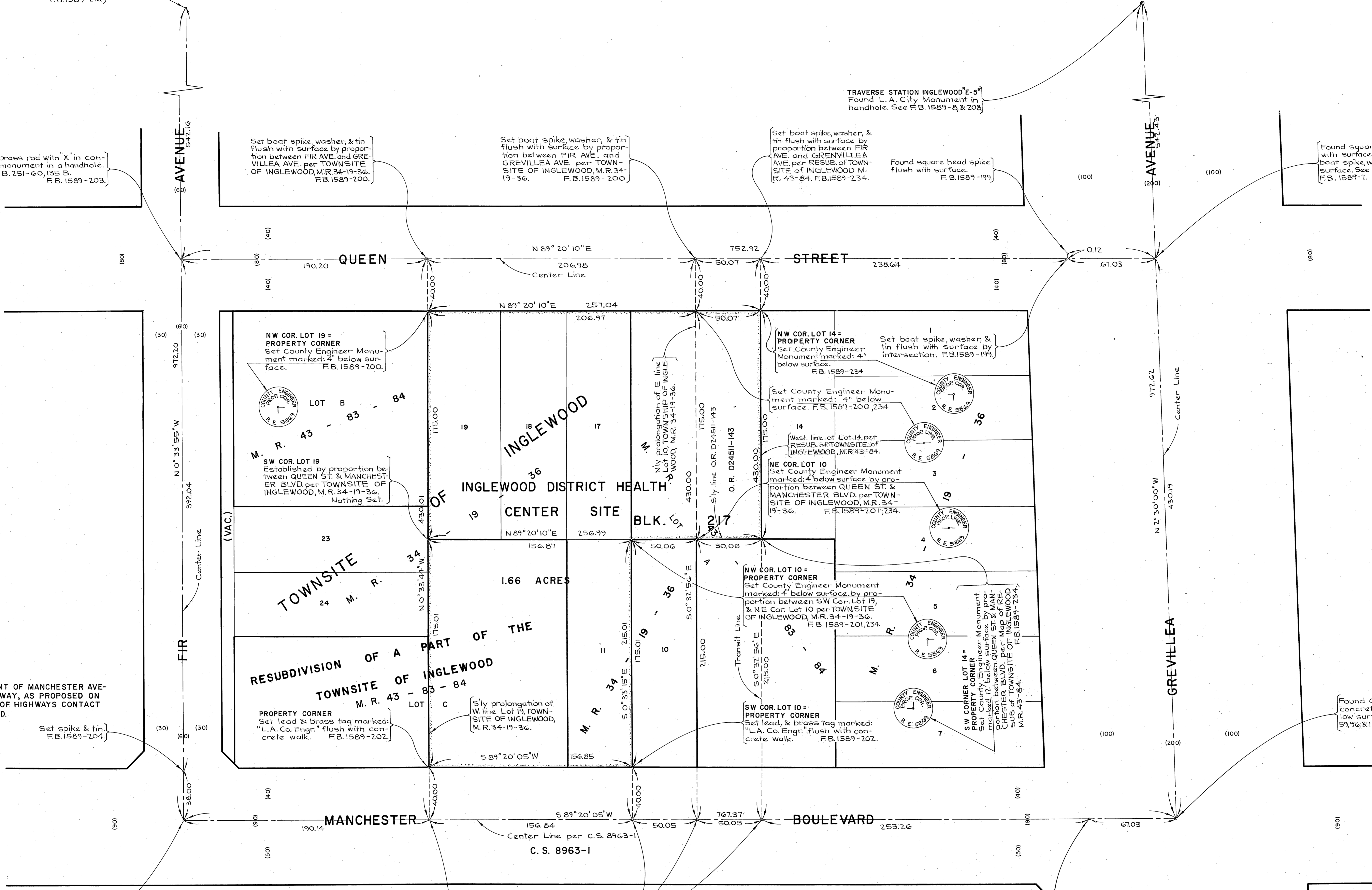
Set spike & tin. F.B. 1589-204.

Found 1" iron pipe, no plug 20" below surface. Set boat spike, washer, & tin flush with surface over same. See F.B. 251-32, 60. F.B. 1589-204.

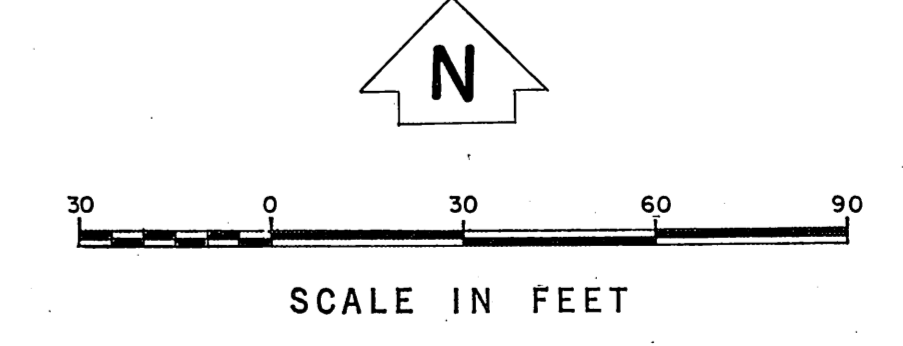
Established by proportion between FIR AVE. & GREVILLEA AVE. per TOWNSITE OF INGLEWOOD, M.R. 34-19-36. Nothing Set.

Found square head spike flush with surface. Replaced same with boat spike, washer, & tin flush with surface. F.B. 1589-197.

REVISION  
1. Easterly boundary revised & master plan note for Manchester Boulevard added.



VICINITY MAP  
NOT TO SCALE



COUNTY OF LOS ANGELES DEPARTMENT OF COUNTY ENGINEER JOHN A. LAMBE, COUNTY ENGINEER PREPARED BY SURVEY DIVISION C. E. BRUNTY, DIVISION ENGINEER SURVEYED BY D. S. FOULGER CHECKED BY D. SAPPELL DRAWN BY R. B. SHEAN	BOUNDARY MAP OF <b>INGLEWOOD DISTRICT          HEALTH CENTER SITE</b> FOR TOPOGRAPHY SEE SURVEY DIVISION FILE MAP NO. P.T. 443 BASIS OF BEARINGS THE BEARING OF THE CENTER LINE OF MANCHESTER BLVD. (S89°20'05"W) AS SHOWN ON C.S. 8963-1.		COUNTY SURVEYOR'S MAP NO. <b>B-5074</b> SHEET 1 OF 1 SHEET FILED 11-18-1969 SURVEYED JULY 1969 REFERENCE F. B. 1589-195-218	REVISION NO. BY DATE 1 R.R.S. 7-70
			JOB NUMBER 0040.15	INDEX MAP NO. 24