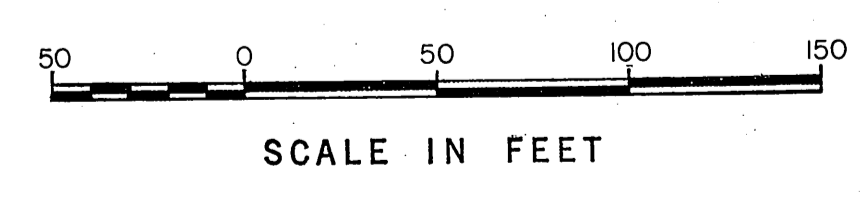
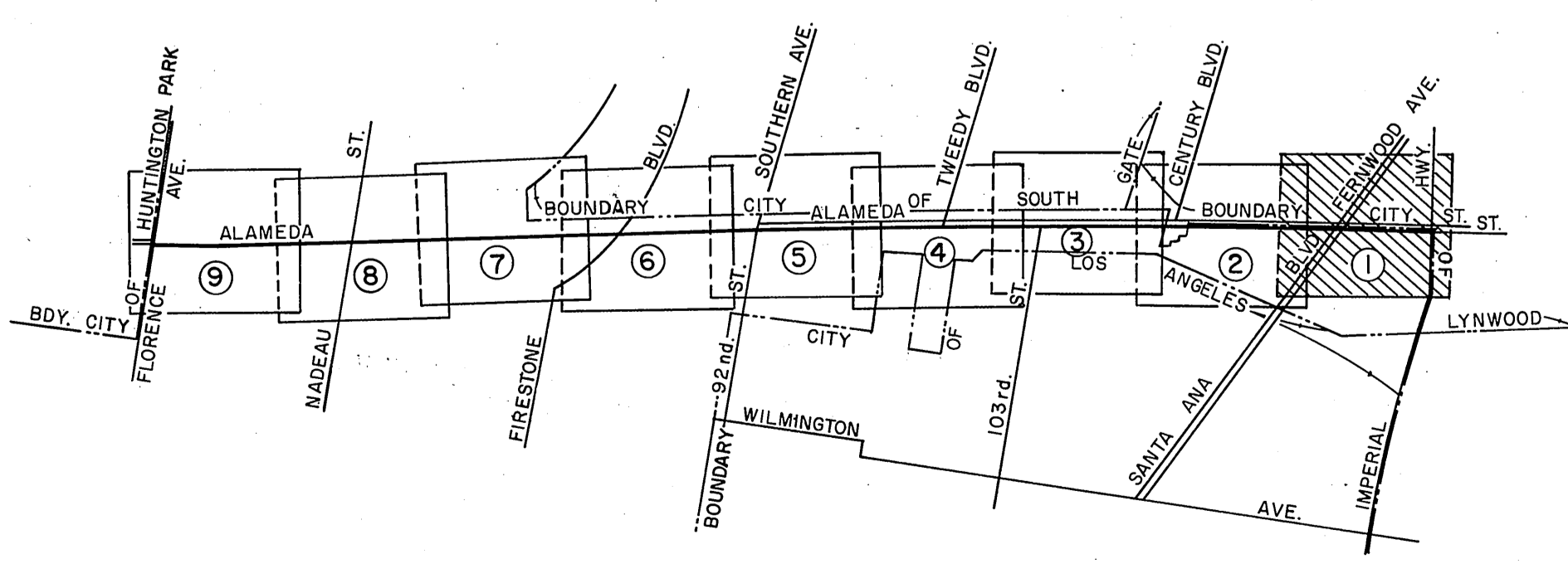


SUBDIVISION OF THE J. J. BULLIS
76.11 ACRE LOT.
M. R. 55 - 28

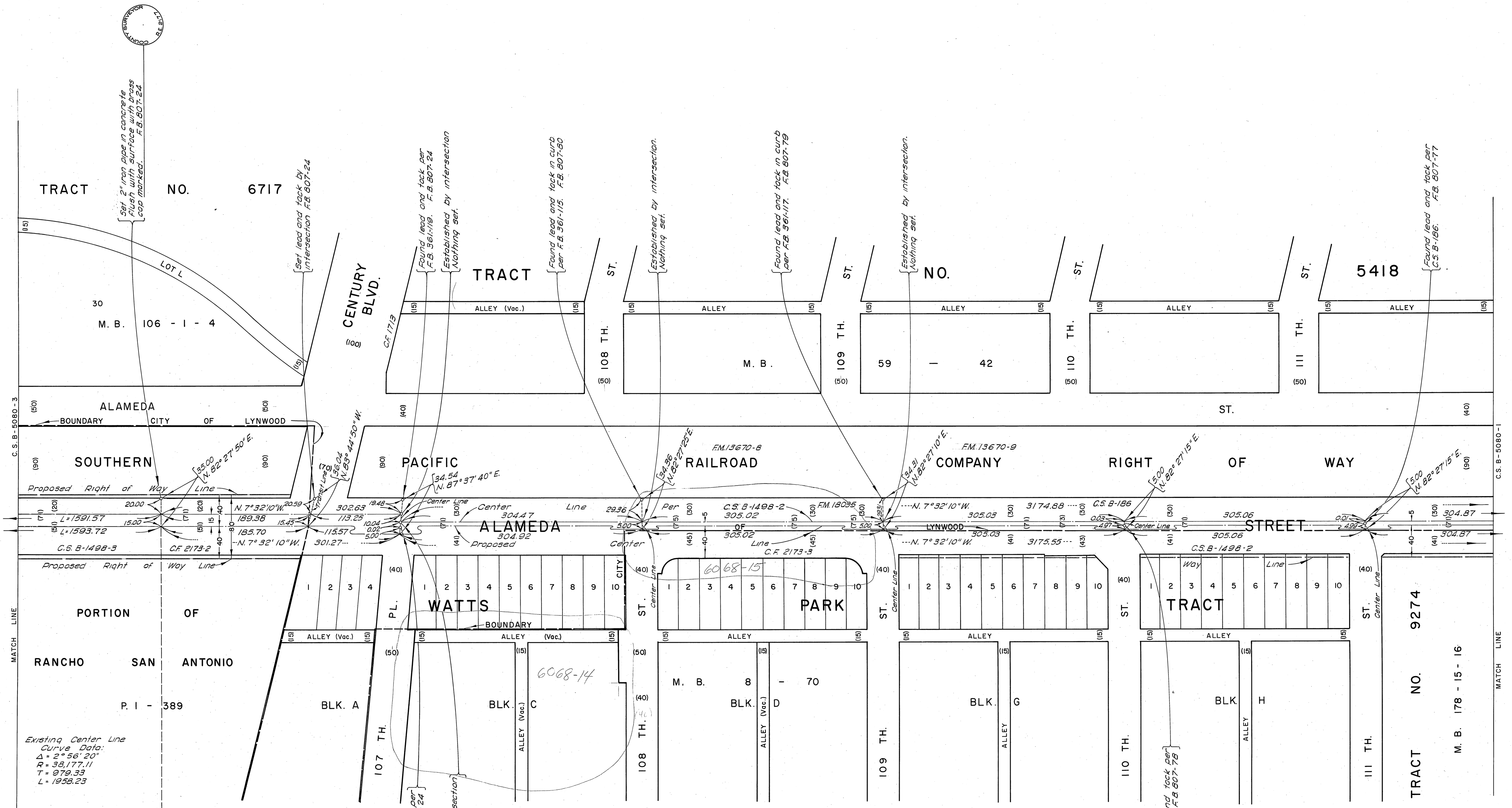
NOTE:
THE ALIGNMENT OF SANTA ANA BLVD.
A SECONDARY HIGHWAY, AS PROPOSED
ON THE MASTER PLAN OF HIGHWAYS
HAD NOT BEEN ESTABLISHED AT THE
TIME OF THE FILING OF THIS MAP.

NOTE:
FOR THE ESTABLISHMENT OF THE EXISTING CENTER
LINES SHOWN HEREON SEE C.S.B-1498-2, 3 AND 4.

REVISIONS:
O Cadastral Data Revised.



COUNTY OF LOS ANGELES DEPARTMENT OF COUNTY ENGINEER JOHN A. LAMBE, COUNTY ENGINEER PREPARED BY SURVEY DIVISION SURVEYED BY L. D. MOORE CHECKED BY R. HILARIO DRAWN BY S. KURACHI	ALIGNMENT MAP OF		COUNTY SURVEYOR'S MAP NO.		
	ALAMEDA STREET		B-5080		
	FROM IMPERIAL HIGHWAY TO FLORENCE AVENUE		SHEET 1 OF 9 SHEETS		
	BASIS OF BEARINGS THE BEARINGS ARE BASED ON THE CENTER LINE OF ALAMEDA STREET (N. 10° 25' 50" W.) AS SHOWN ON C.S.B-1498-3, -4.		FILED JULY 22 1972 DEPUTY SURVEYOR JULY - DEC. 1939 REFERENCE F. B. 807-1-180		
		JOB NUMBER 0096.72		INDEX MAP NO. 7, 26, 32	
				NO. BY DATE BY A.M. 4-24-78	



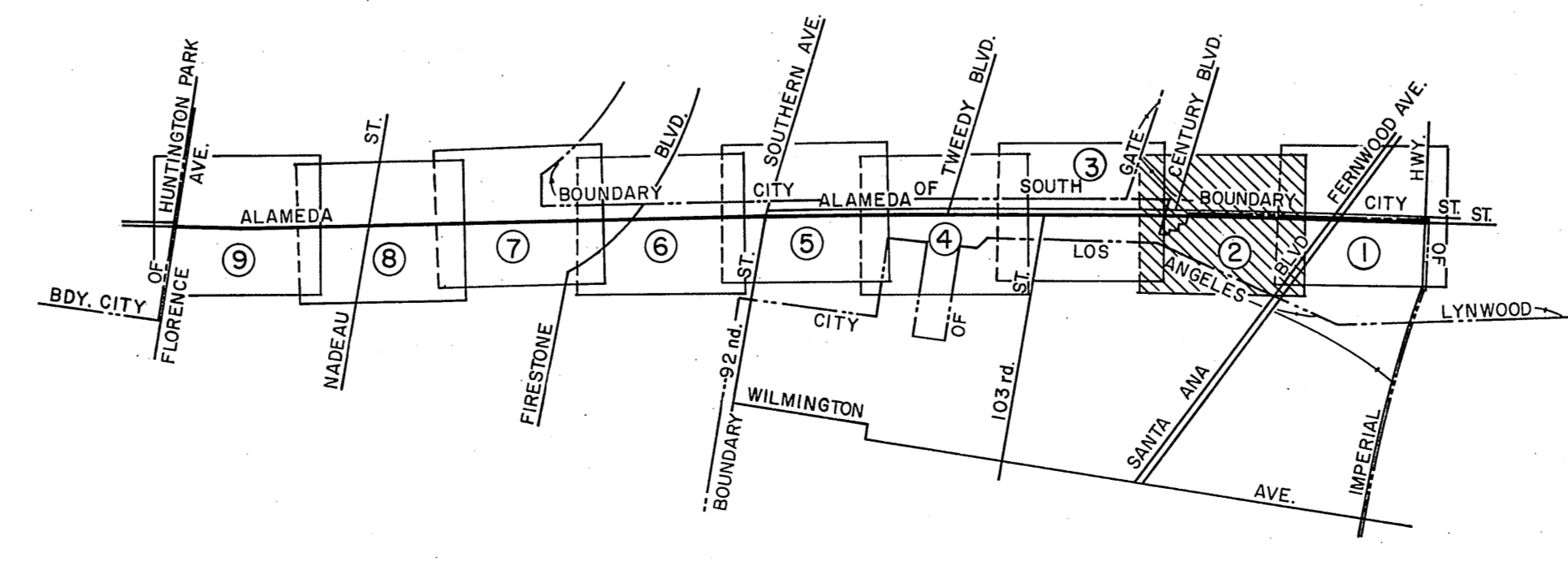
Existing Center Line Curve Data:
 $\Delta = 2^\circ 56' 20''$
 $R = 38,177.11$
 $T = 979.33$
 $L = 1958.23$

Proposed Center Line Curve Data:
 $\Delta = 2^\circ 56' 20''$
 $R = 38,162.11$
 $T = 978.94$
 $L = 1957.47$

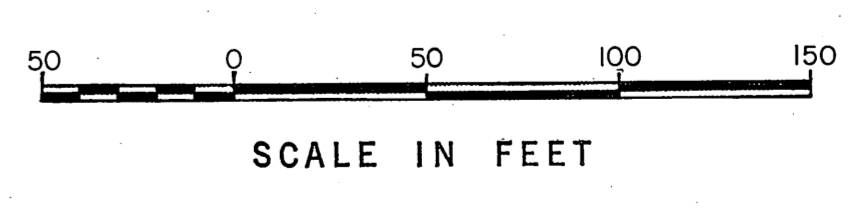
B.C. - Nothing Set

REVISIONS:

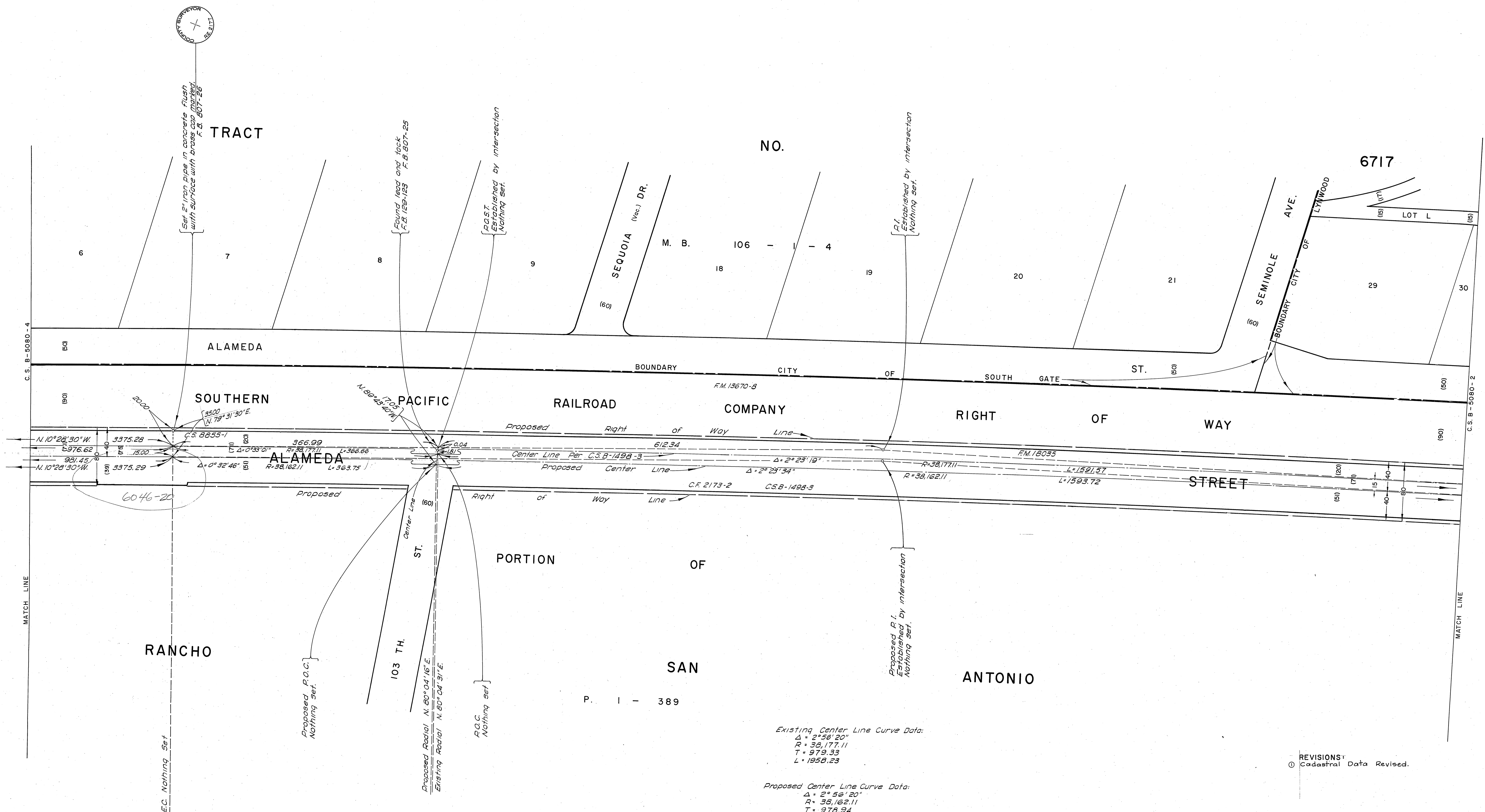
NOTE:
 FOR THE ESTABLISHMENT OF THE EXISTING CENTER LINES SHOWN HEREON SEE C.S.B-1498-2, 3 AND 4.



VICINITY MAP NOT TO SCALE



COUNTY OF LOS ANGELES DEPARTMENT OF COUNTY ENGINEER JOHN A. LAMBIE - COUNTY ENGINEER PREPARED BY SURVEY DIVISION SURVEYED BY <u>L. D. MOORE</u> CHECKED BY <u>R. HILARIO</u> DRAWN BY <u>S. KURACHI</u>	ALIGNMENT MAP OF ALAMEDA STREET FROM IMPERIAL HIGHWAY TO FLORENCE AVENUE		COUNTY SURVEYOR'S MAP NO. B-5080 SHEET 2 OF 9 SHEETS	REVISION NO. BY DATE 1 A.M. 4-24-76
	FILED: <u>8-22</u> 19 <u>70</u> <u>Alfred J. ...</u> DEPUTY			SURVEYED JULY - DEC. 19 <u>59</u>
	BASIS OF BEARINGS THE BEARINGS ARE BASED ON THE CENTER LINE OF ALAMEDA STREET (N. 10° 25' 50" W.) AS SHOWN ON C.S.B-1498-3, 4.			REFERENCE F. B. 807-1 - 180
	JOB NUMBER 009672			INDEX MAP NO. 7, 26, 32
	COUNTY ENGINEER'S SIGNATURE AND SEAL			

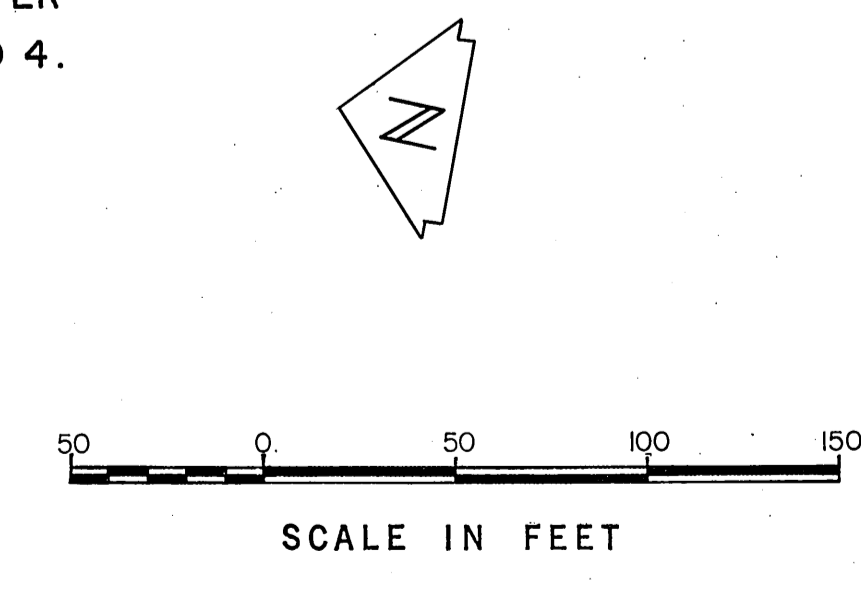
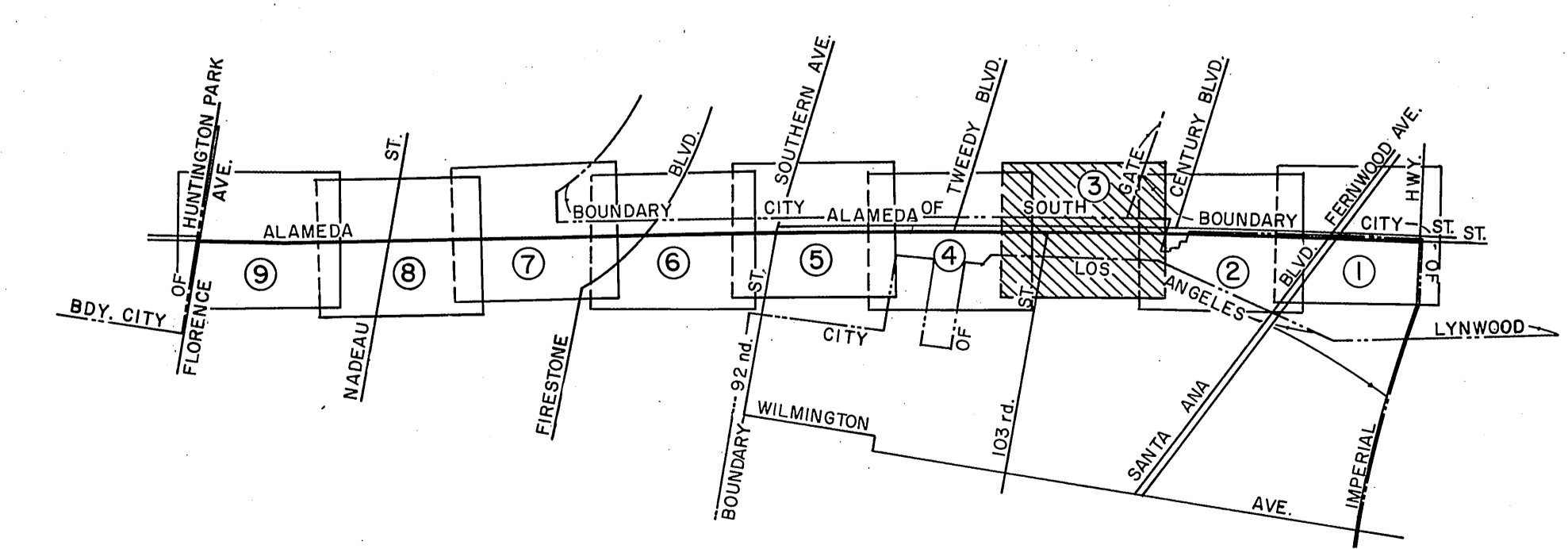


Existing Center Line Curve Data:
 $\Delta = 2^\circ 56' 20''$
 $R = 38,177.11$
 $T = 979.33$
 $L = 1958.23$

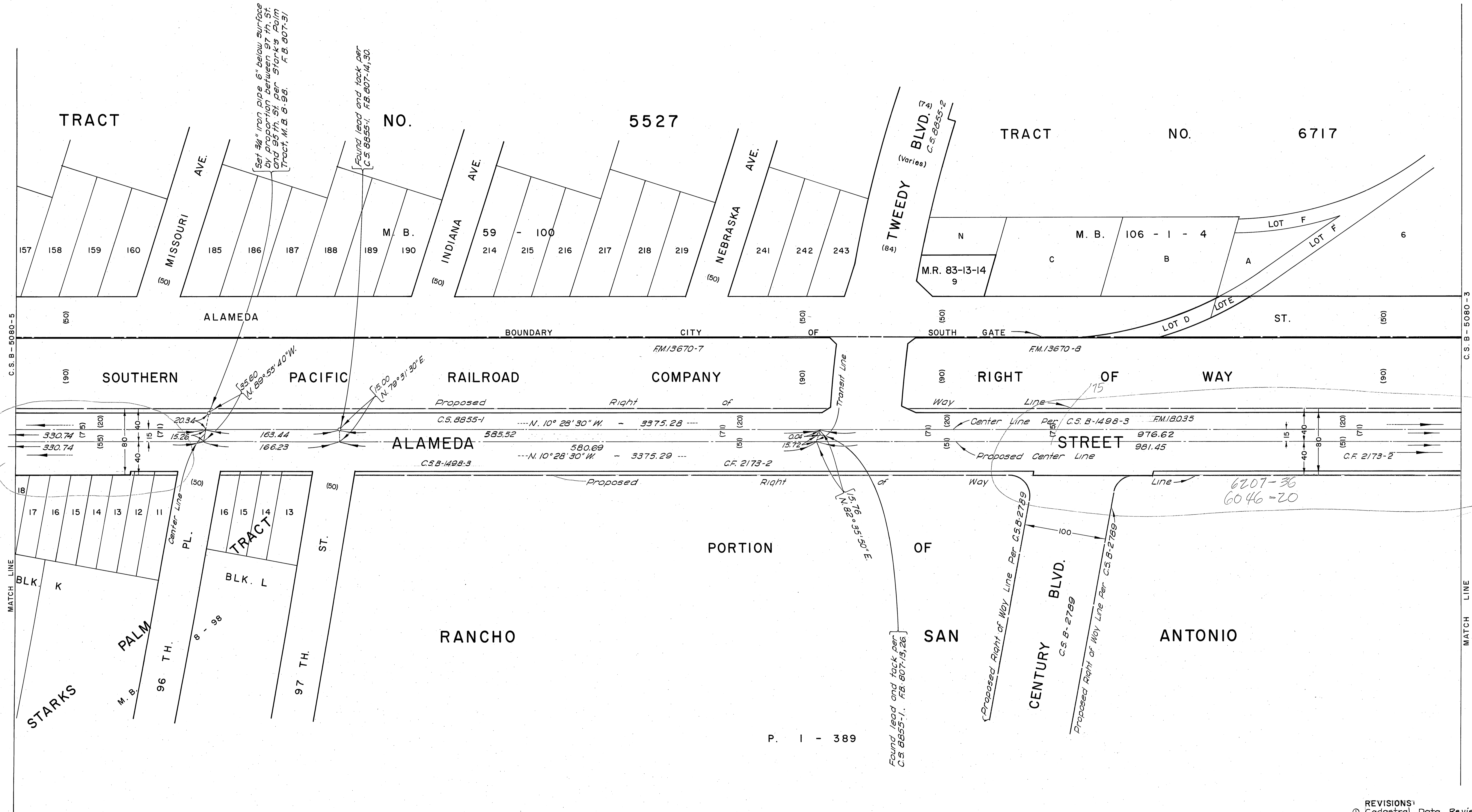
Proposed Center Line Curve Data:
 $\Delta = 2^\circ 56' 20''$
 $R = 38,162.11$
 $T = 978.94$
 $L = 1957.47$

REVISIONS:
 (1) Cadastral Data Revised.

NOTE:
 FOR THE ESTABLISHMENT OF THE EXISTING CENTER LINES SHOWN HEREON SEE C.S.B-1498-2, 3 AND 4.



COUNTY OF LOS ANGELES DEPARTMENT OF COUNTY ENGINEER JOHN A. LAMBIE - COUNTY ENGINEER PREPARED BY SURVEY DIVISION SURVEYED BY - L.D. MOORE CHECKED BY - R. HILARIO DRAWN BY - S. KURACHI	ALIGNMENT MAP OF ALAMEDA STREET FROM IMPERIAL HIGHWAY TO FLORENCE AVENUE		COUNTY SURVEYOR'S MAP NO. B-5080 SHEET 3 OF 9 SHEETS FILED <i>[Signature]</i> 19 <i>[Signature]</i> DEPT. SURVEYED JULY - DEC. 1939 REFERENCE F.B. 807-1-180	REVISION NO. BY DATE (1) A.M. 4-26-76
	BASIS OF BEARINGS THE BEARINGS ARE BASED ON THE CENTER LINE OF ALAMEDA STREET (N. 10° 25' 50" W.) AS SHOWN ON C.S.B-1498-3, -4.			JOB NUMBER 0096.72 INDEX MAP NO. 7, 26, 32

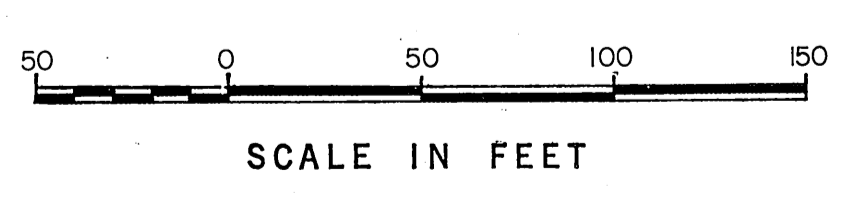
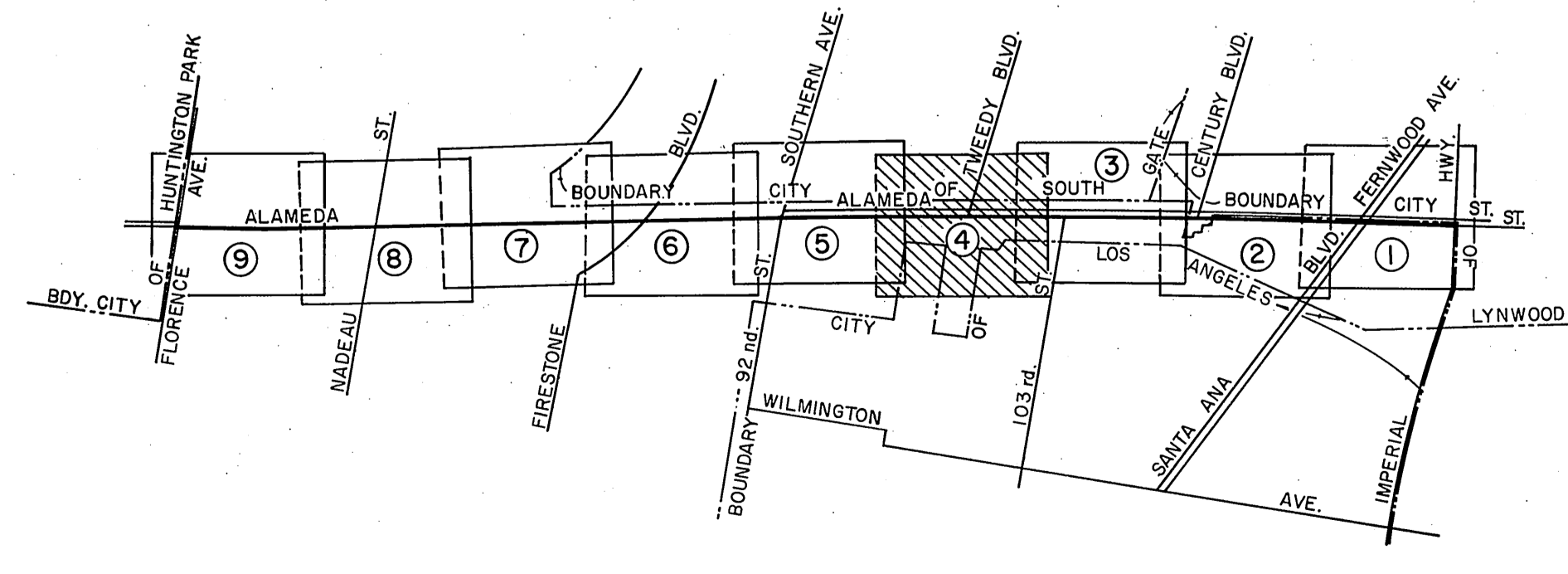


6046-9

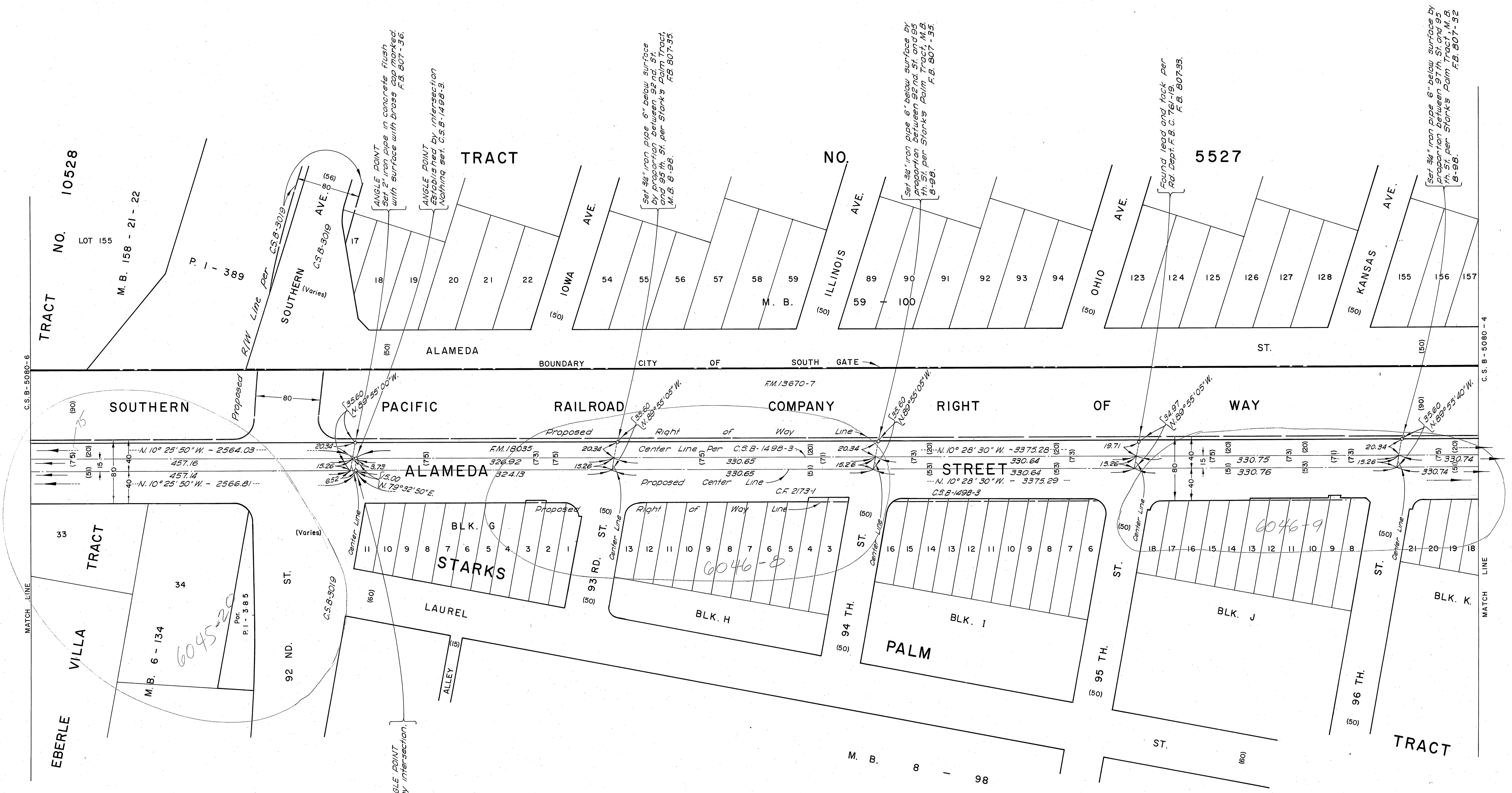
6207-36
6046-20

REVISIONS:
① Cadastral Data Revised.

NOTE:
FOR THE ESTABLISHMENT OF THE EXISTING CENTER LINES SHOWN HEREON SEE C.S.B-1498-2, 3 AND 4.

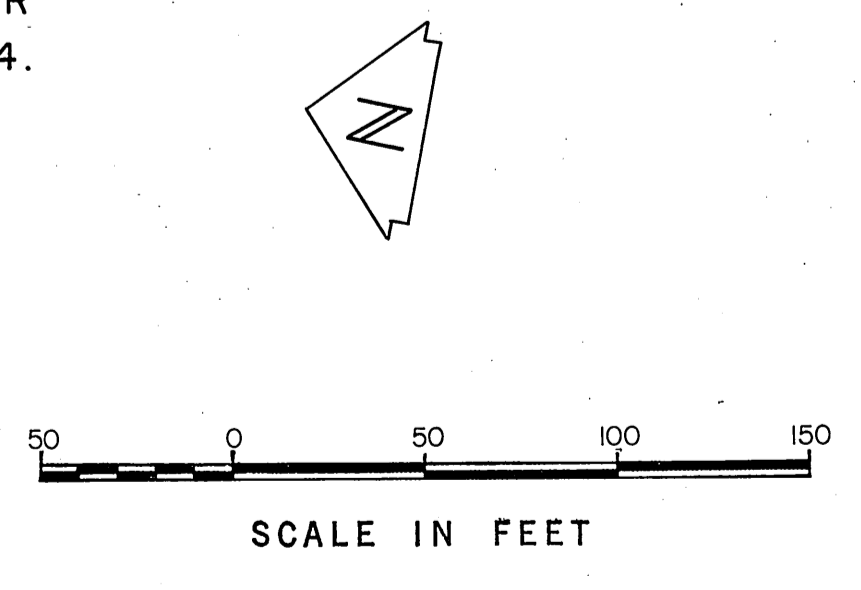
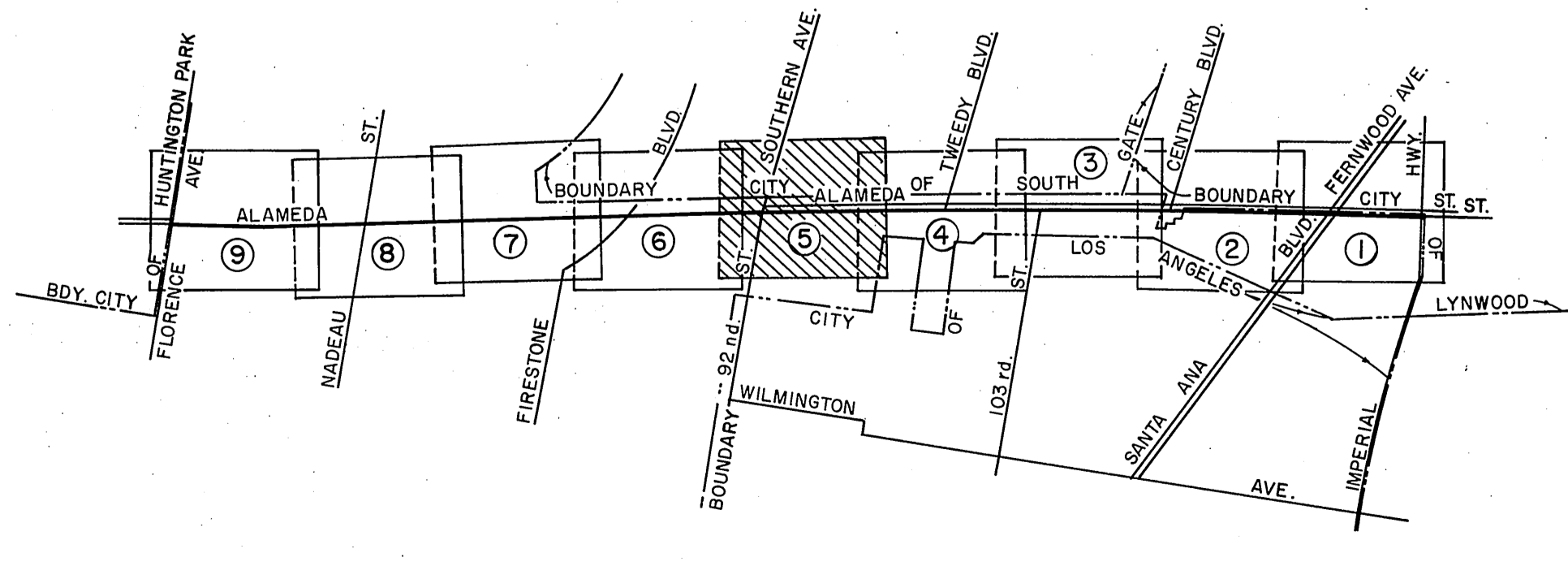


COUNTY OF LOS ANGELES DEPARTMENT OF COUNTY ENGINEER JOHN A. LAMBIE - COUNTY ENGINEER PREPARED BY SURVEY DIVISION SURVEYED BY L. D. MOORE CHECKED BY R. HILARIO DRAWN BY S. KURACHI	ALIGNMENT MAP OF ALAMEDA STREET FROM IMPERIAL HIGHWAY TO FLORENCE AVENUE		COUNTY SURVEYOR'S MAP NO. B-5080 SHEET 4 OF 9 SHEETS FILED: 2-22-1920 <i>George O. Brown</i> DEPUTY SURVEYED JULY - DEC. 1939 REFERENCE F.B. 807-1-180	REVISION NO. BY DATE ① A.M. 4-25-78
	BASIS OF BEARINGS THE BEARINGS ARE BASED ON THE CENTER LINE OF ALAMEDA STREET (N.10°25'50"W.) AS SHOWN ON C.S.B-1498-3,-4.			JOB NUMBER 0096.72
	INDEX MAP NO. 7, 26, 32			

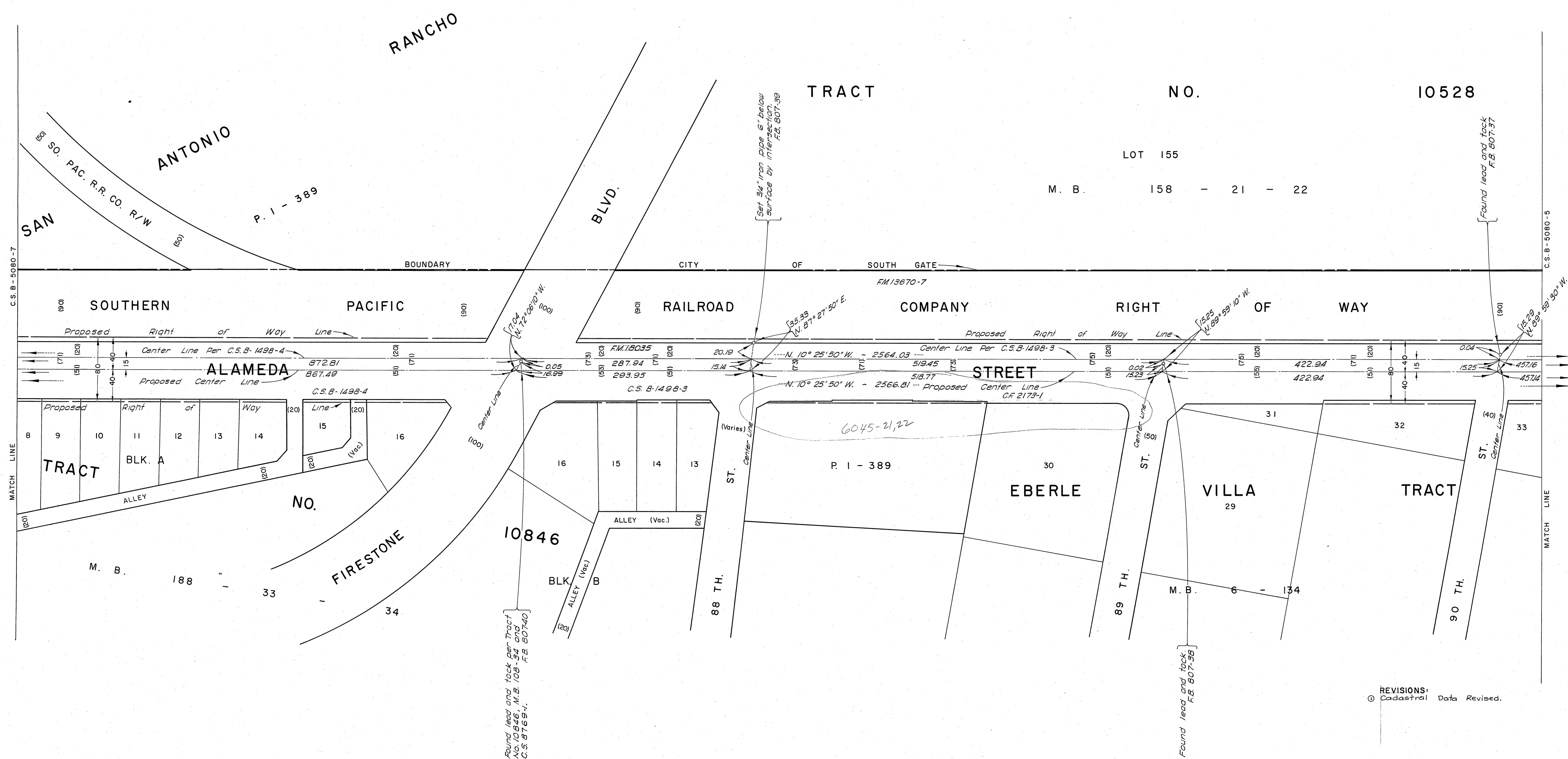


REVISIONS:
 Ⓞ Cadastral Data Revised.

NOTE:
 FOR THE ESTABLISHMENT OF THE EXISTING CENTER LINES SHOWN HEREON SEE C.S.B-1498-2, 3 AND 4.

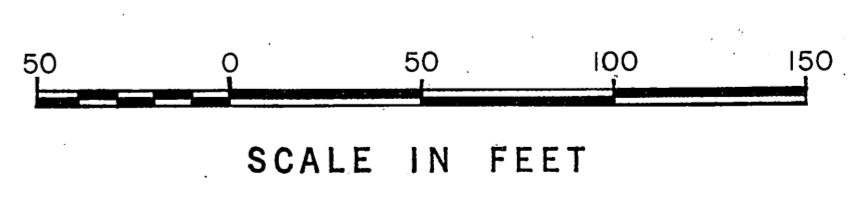
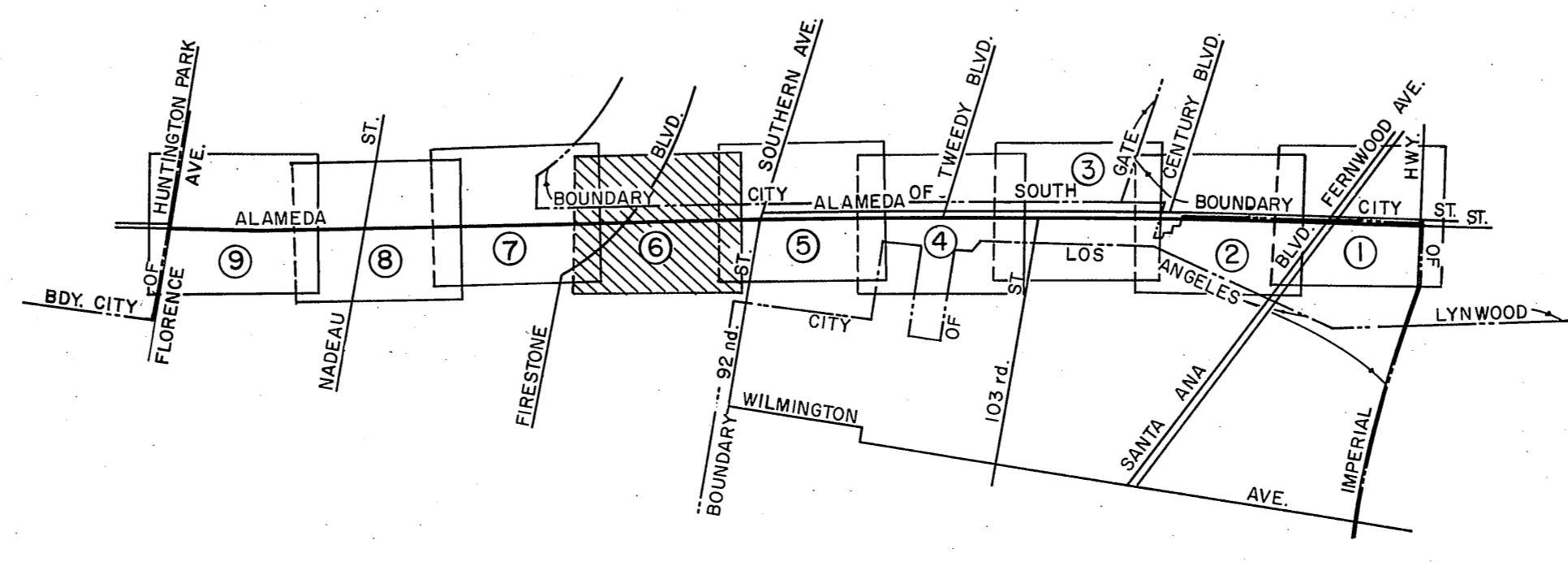


COUNTY OF LOS ANGELES DEPARTMENT OF COUNTY ENGINEER JOHN A. LAMBIE, COUNTY ENGINEER PREPARED BY SURVEY DIVISION SURVEYED BY <u>E. D. MOORE</u> CHECKED BY <u>R. HILARIO</u> DRAWN BY <u>S. KURACHI</u>	ALIGNMENT MAP OF ALAMEDA STREET FROM IMPERIAL HIGHWAY TO FLORENCE AVENUE		COUNTY SURVEYOR'S MAP NO. B-5080 SHEET 5 OF 9 SHEETS FILED <u>2-22</u> 19 <u>72</u> <u>Henry D. Zimmerman</u> DEPUTY SURVEYED JULY - DEC. 1939 REFERENCE F.B. 807-1-180	REVISION NO. BY DATE Ⓞ A.M. 4-28-78
	BASIS OF BEARINGS THE BEARINGS ARE BASED ON THE CENTER LINE OF ALAMEDA STREET (N. 10° 25' 30" W.) AS SHOWN ON C.S.B-1498-3, -4.			JOB NUMBER 0096-72 INDEX MAP NO. 7, 26, 32
	SCALE IN FEET 0 50 100 150			
	C.S.B-2080-2			

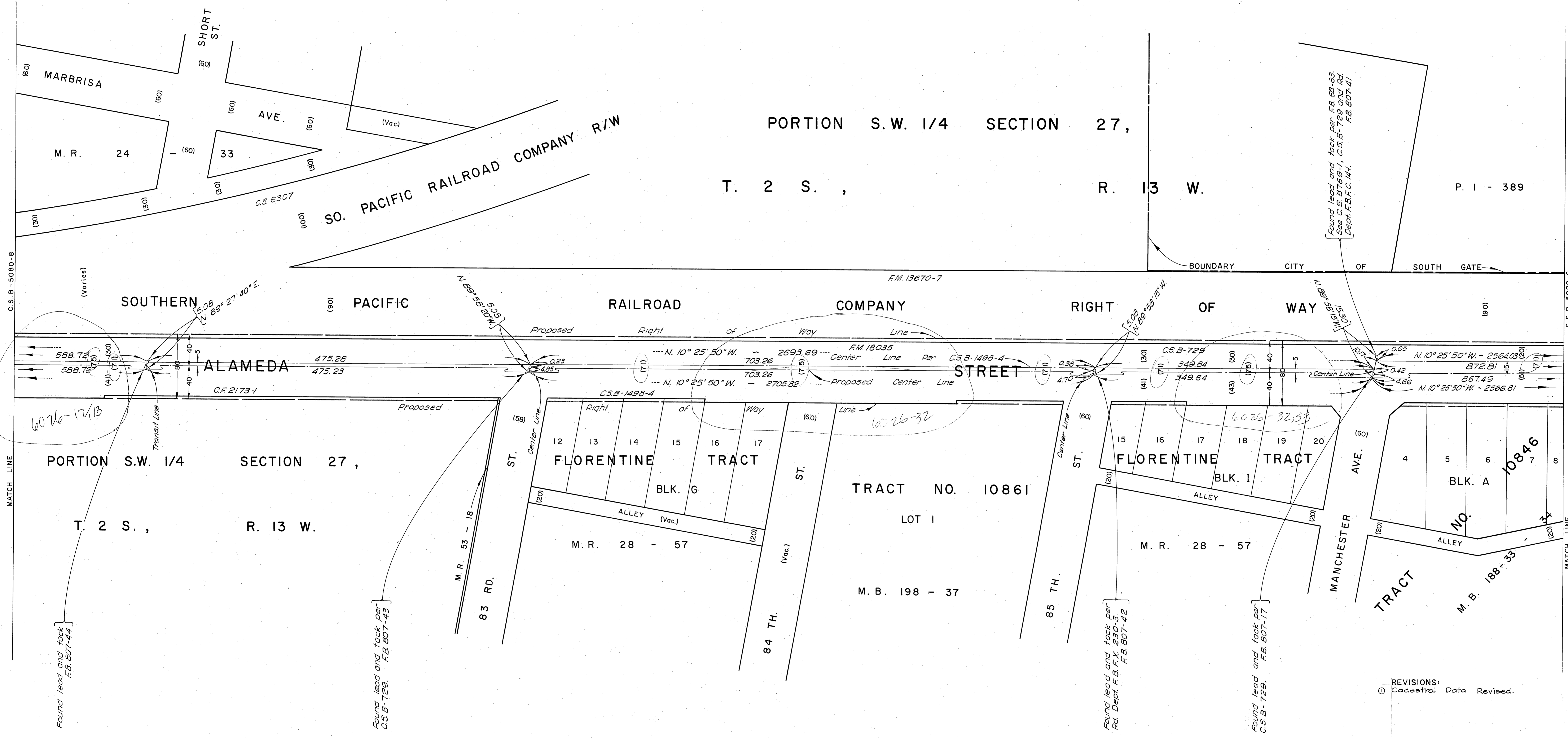


REVISIONS:
 Ⓞ Cadastral Data Revised.

NOTE:
 FOR THE ESTABLISHMENT OF THE EXISTING CENTER LINES SHOWN HEREON SEE C.S.B-1498-2, 3 AND 4.

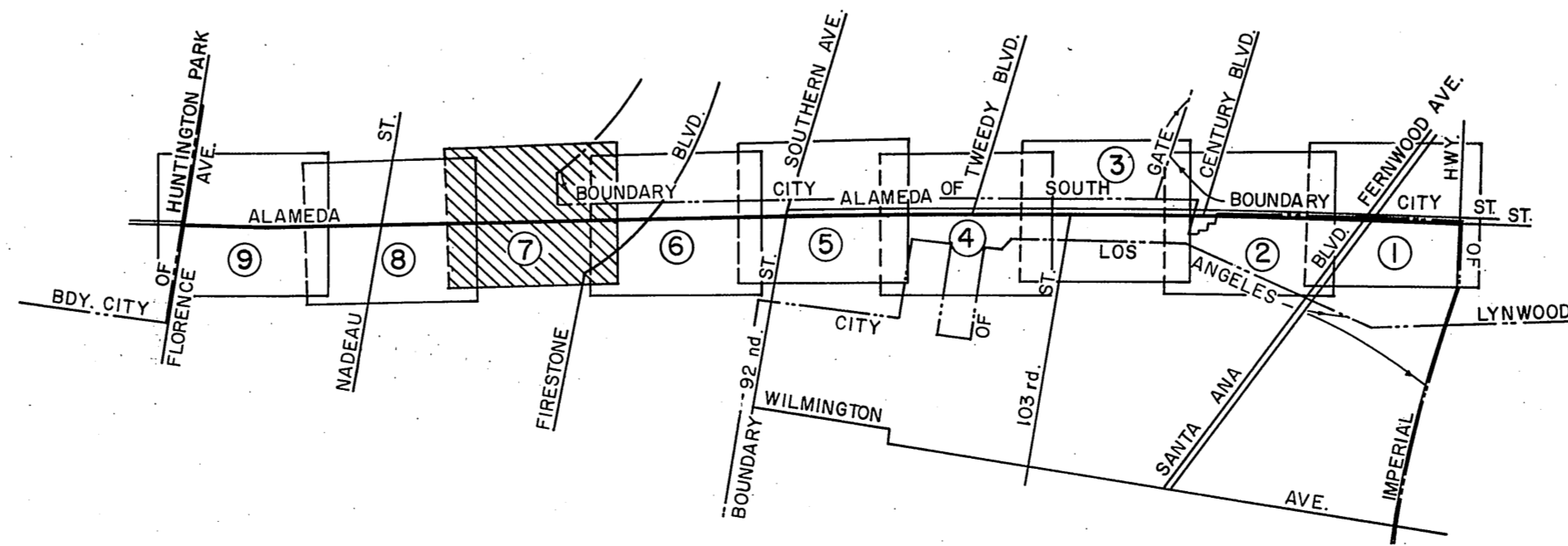


COUNTY OF LOS ANGELES DEPARTMENT OF COUNTY ENGINEER JOHN A. LAMBIE - COUNTY ENGINEER PREPARED BY SURVEY DIVISION SURVEYED BY <u>L. D. MOORE</u> CHECKED BY <u>R. HILARIO</u> DRAWN BY <u>S. KURACHI</u>	ALIGNMENT MAP OF ALAMEDA STREET FROM IMPERIAL HIGHWAY TO FLORENCE AVENUE		COUNTY SURVEYOR'S MAP NO. B-5080 SHEET 6 OF 9 SHEETS FILED <u>2-22</u> , 19 <u>70</u> <u>Sherry J. P. Pennington</u> DEPUTY SURVEYED JULY - DEC. 1959 REFERENCE F. B. 807-1 - 180
	BASIS OF BEARINGS THE BEARINGS ARE BASED ON THE CENTER LINE OF ALAMEDA STREET (N. 10° 25' 50" W.) AS SHOWN ON C.S.B-1498-3, -4.		JOB NUMBER 0096.72 INDEX MAP NO. 7, 26, 32
	REVISION NO. BY DATE Ⓞ A.M. 5-2-78		

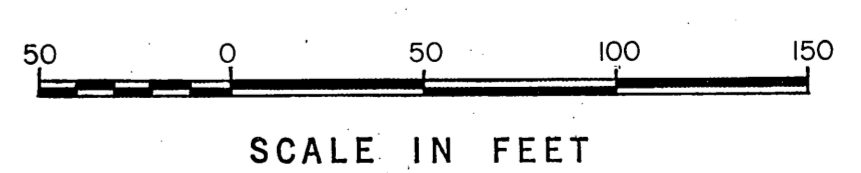


REVISIONS:
 (1) Cadastral Data Revised.

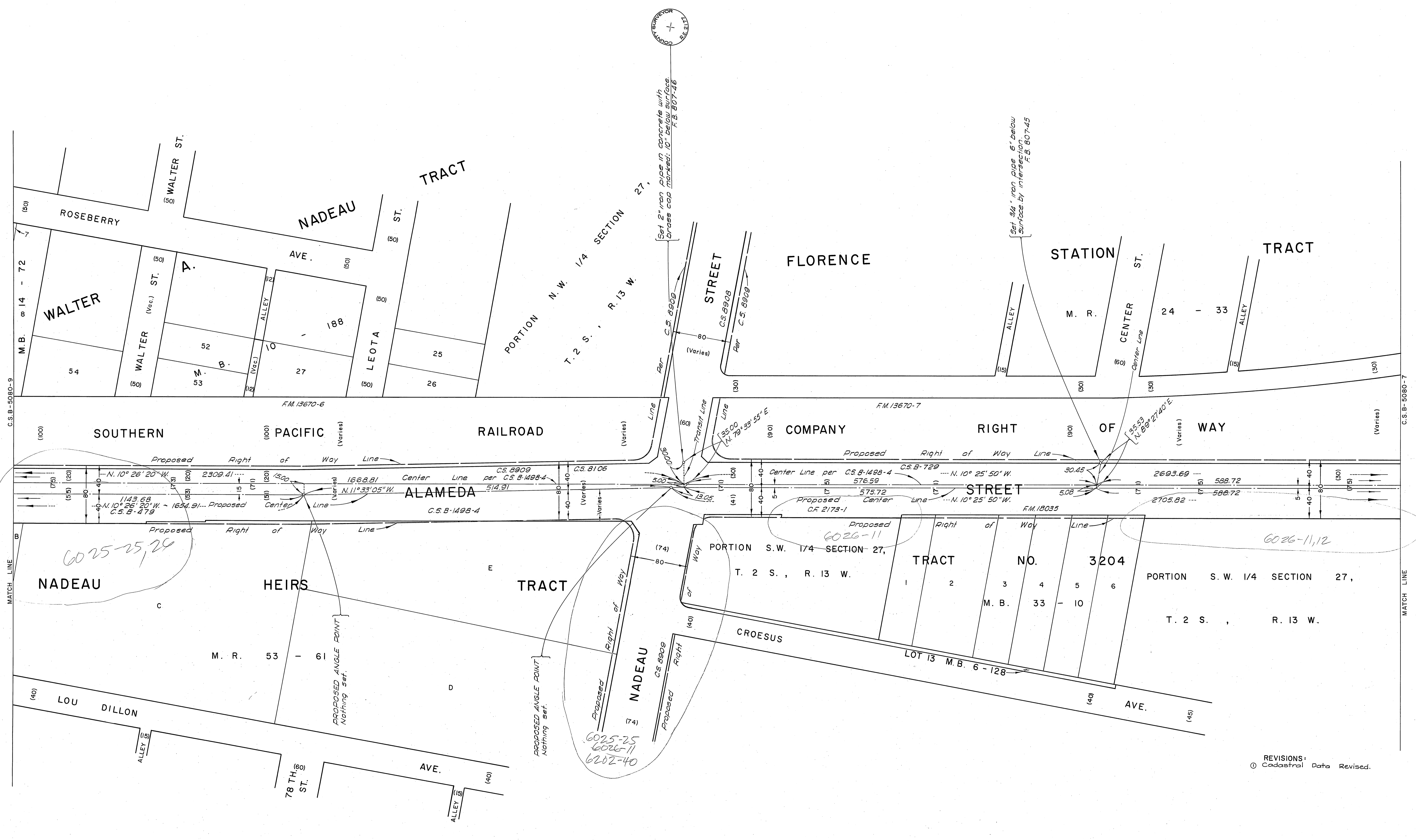
NOTE:
 FOR THE ESTABLISHMENT OF THE EXISTING CENTER LINES SHOWN HEREON SEE C.S.B-1498-2, 3 AND 4.



VICINITY MAP
 NOT TO SCALE

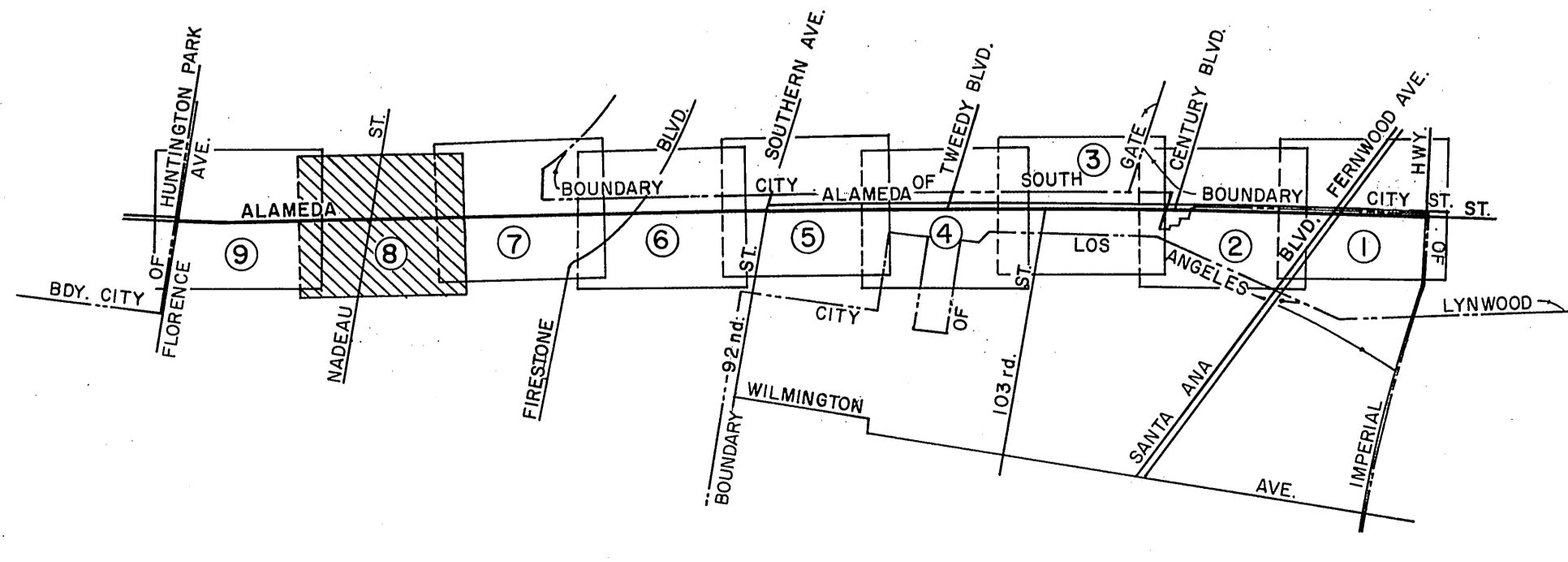


COUNTY OF LOS ANGELES DEPARTMENT OF COUNTY ENGINEER JOHN A. LAMBIE - COUNTY ENGINEER PREPARED BY SURVEY DIVISION SURVEYED BY <u>L. D. MOORE</u> CHECKED BY <u>R. HILARIO</u> DRAWN BY <u>S. KURACHI</u>	ALIGNMENT MAP OF ALAMEDA STREET FROM IMPERIAL HIGHWAY TO FLORENCE AVENUE		COUNTY SURVEYOR'S MAP NO. B-5080 SHEET 7 OF 9 SHEETS FILED <u>8/30</u> 19 <u>20</u> <u>Raymond B. Brundage</u> DEPUTY SURVEYED JULY - DEC. 1939 REFERENCE F.B. 807-1-180	REVISION NO. BY DATE (1) A.M. 7-15-78
	BASIS OF BEARINGS THE BEARINGS ARE BASED ON THE CENTER LINE OF ALAMEDA STREET (N. 10° 25' 50" W.) AS SHOWN ON C.S.B-1498-3, -4.			JOB NUMBER 009672
				INDEX MAP NO. 7, 26, 32

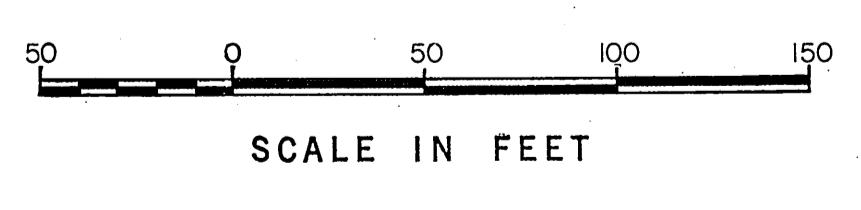


REVISIONS:
 ① Cadastral Data Revised.

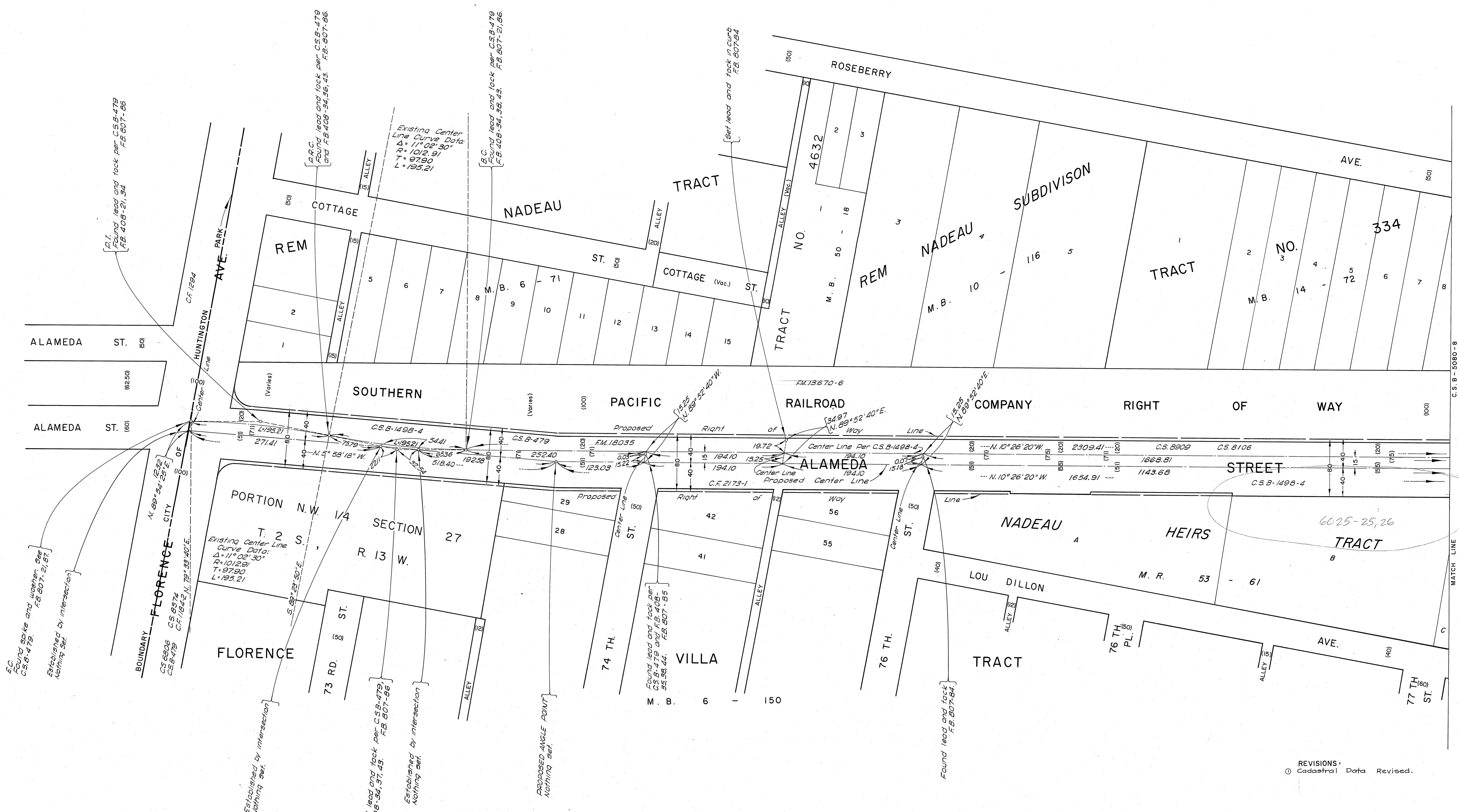
NOTE:
 FOR THE ESTABLISHMENT OF THE EXISTING CENTER LINES SHOWN HEREON SEE C.S.B-1498-2, 3 AND 4.



VICINITY MAP
 NOT TO SCALE



COUNTY OF LOS ANGELES DEPARTMENT OF COUNTY ENGINEER JOHN A. LAMBIE - COUNTY ENGINEER PREPARED BY SURVEY DIVISION SURVEYED BY L. D. MOORE CHECKED BY R. HILARIO DRAWN BY S. KURACHI	ALIGNMENT MAP OF		COUNTY SURVEYOR'S MAP NO. B-5080	REVISION NO. BY DATE ① A.M. 5-16-72
	ALAMEDA STREET		SHEET 8 OF 9 SHEETS FILED <u>2-22</u> 19 <u>72</u>	
	FROM IMPERIAL HIGHWAY		SURVEYED JULY - DEC. 1939	
	TO FLORENCE AVENUE		REFERENCE F. B. 807-1-180	
	BASIS OF BEARINGS THE BEARINGS ARE BASED ON THE CENTER LINE OF ALAMEDA STREET (N. 10° 25' 50" W.) AS SHOWN ON C.S.B-1498-3, 4.		JOB NUMBER 009672	INDEX MAP NO. 7, 26, 32



Found spike and washer. See C.S.B-479 and F.B. 807-21, 87. Established by intersection. Nothing set.

BOUNDARY FLORENCE CITY OF
 N. 89° 34' 12.32" E. C.S. 6306
 N. 89° 34' 25.9" E. C.S. 479
 C.F. 11642 N. 79° 33' 40.1" E.

PORTION N.W. 1/4 SECTION 27 R. 13 W. T. 2 S.
 Existing Center Line Curve Data:
 $\Delta = 11^\circ 02' 30''$
 $R = 1012.91$
 $T = 97.90$
 $L = 192.21$

Found lead and tack per C.S.B-479 and F.B. 807-34, 37, 43. F.B. 807-86. Established by intersection. Nothing set.

Found lead and tack per C.S.B-479 and F.B. 807-34, 37, 43. F.B. 807-86. Established by intersection. Nothing set.

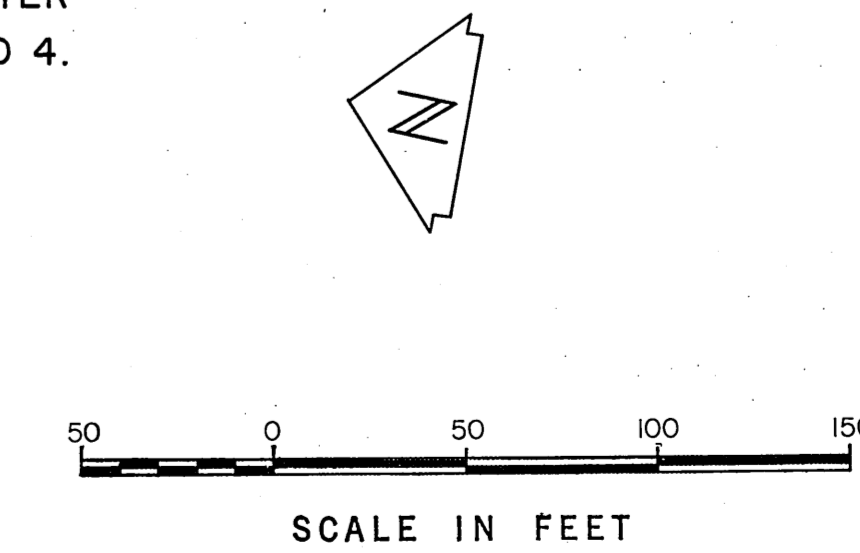
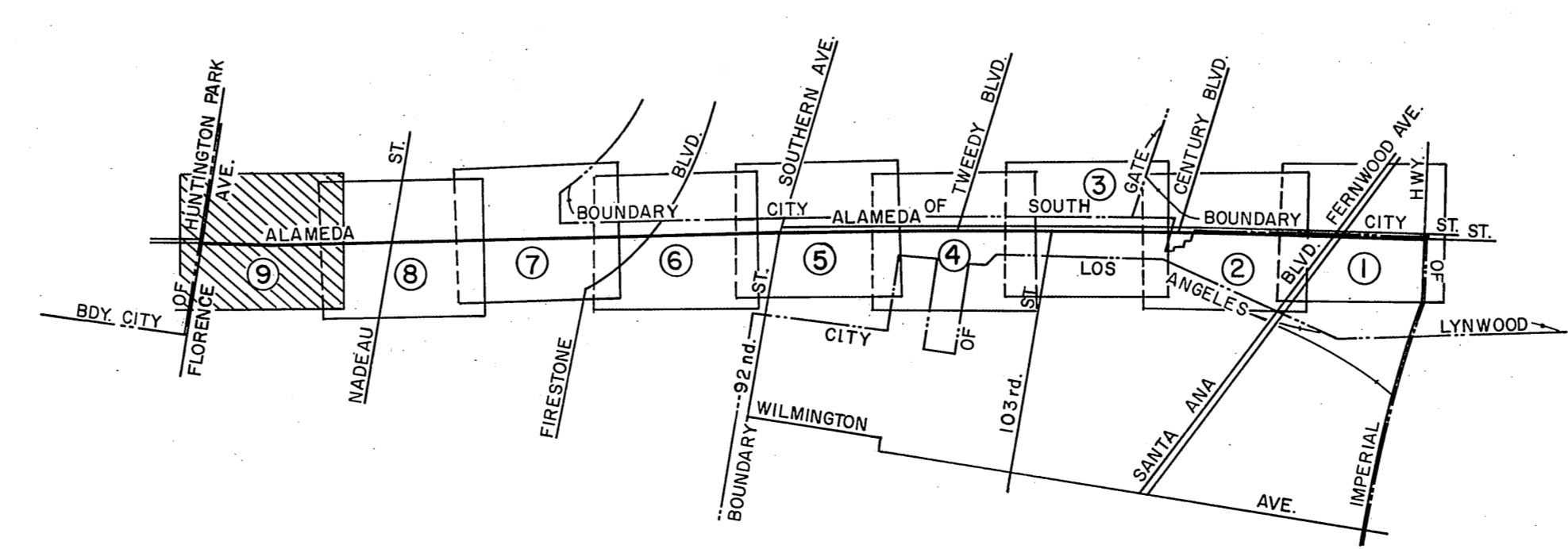
PROPOSED ANGLE POINT. Nothing set.

Found lead and tack per C.S.B-479 and F.B. 807-34, 37, 43. F.B. 807-86. Established by intersection. Nothing set.

Found lead and tack. F.B. 807-84.

REVISIONS:
 ① Cadastral Data Revised.

NOTE:
 FOR THE ESTABLISHMENT OF THE EXISTING CENTER LINES SHOWN HEREON SEE C.S.B-1498-2, 3 AND 4.



COUNTY OF LOS ANGELES DEPARTMENT OF COUNTY ENGINEER JOHN A. LAMBIE - COUNTY ENGINEER PREPARED BY SURVEY DIVISION SURVEYED BY L. D. MOORE CHECKED BY R. MILARIO DRAWN BY S. KURACHI	ALIGNMENT MAP OF ALAMEDA STREET FROM IMPERIAL HIGHWAY TO FLORENCE AVENUE		COUNTY SURVEYOR'S MAP NO. B-5080 SHEET 9 OF 9 SHEETS FILED <i>[Signature]</i> 1939 DEPUTY SURVEYED JULY - DEC. 1939 REFERENCE F. B. 807-1 - 180	REVISION NO. BY DATE ① A.M. 12-17-76
	BASIS OF BEARINGS THE BEARINGS ARE BASED ON THE CENTER LINE OF ALAMEDA STREET (N. 10° 25' 50" W.) AS SHOWN ON C.S.B-1498-3, -4.			JOB NUMBER 009672 INDEX MAP NO. 7, 26, 32