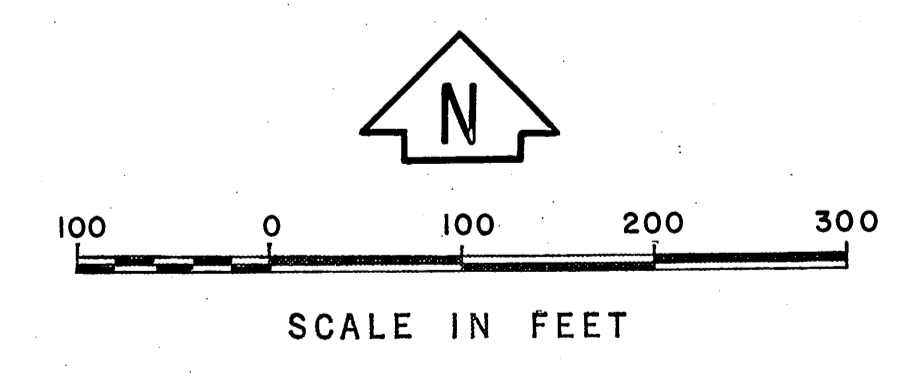
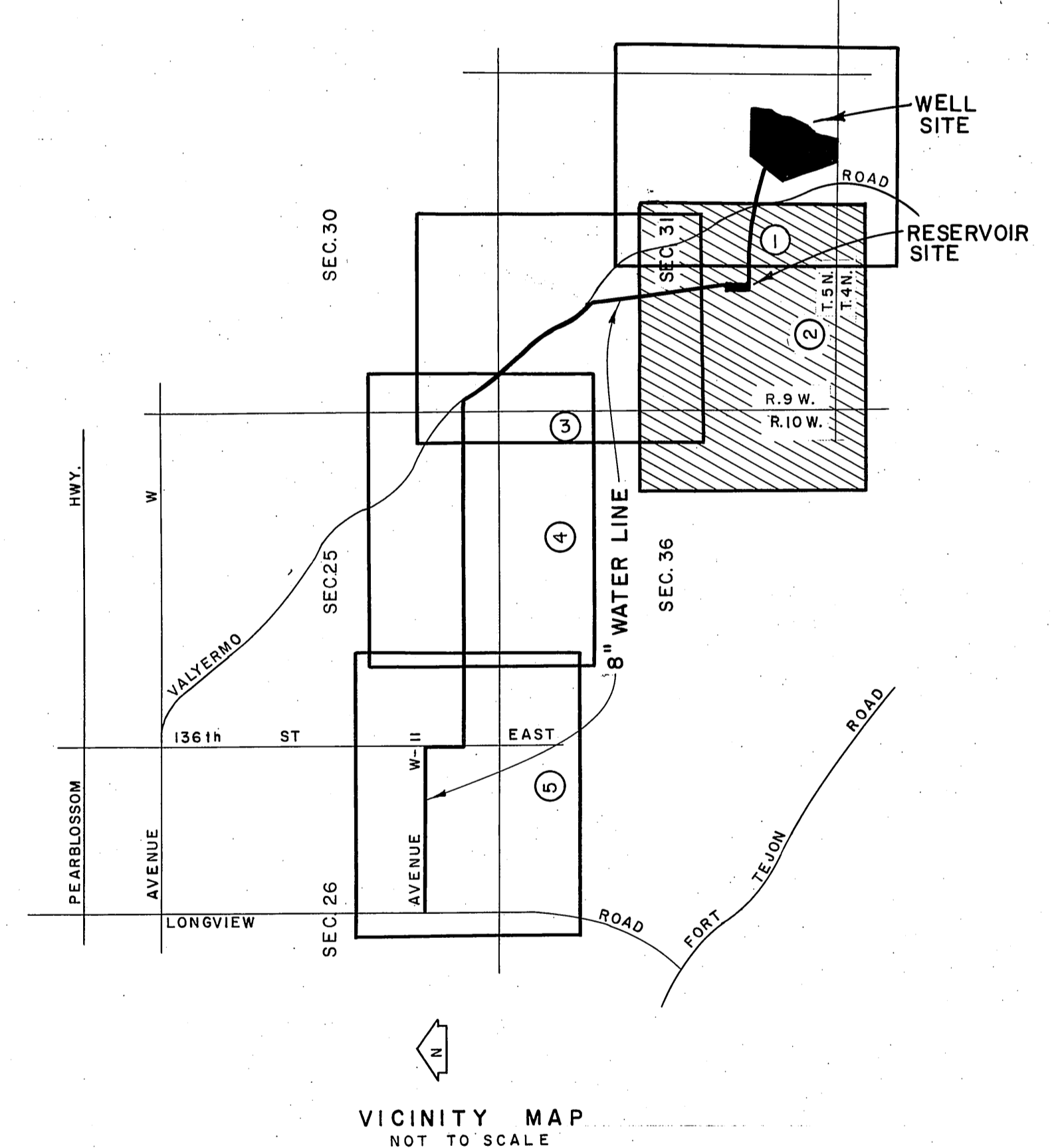
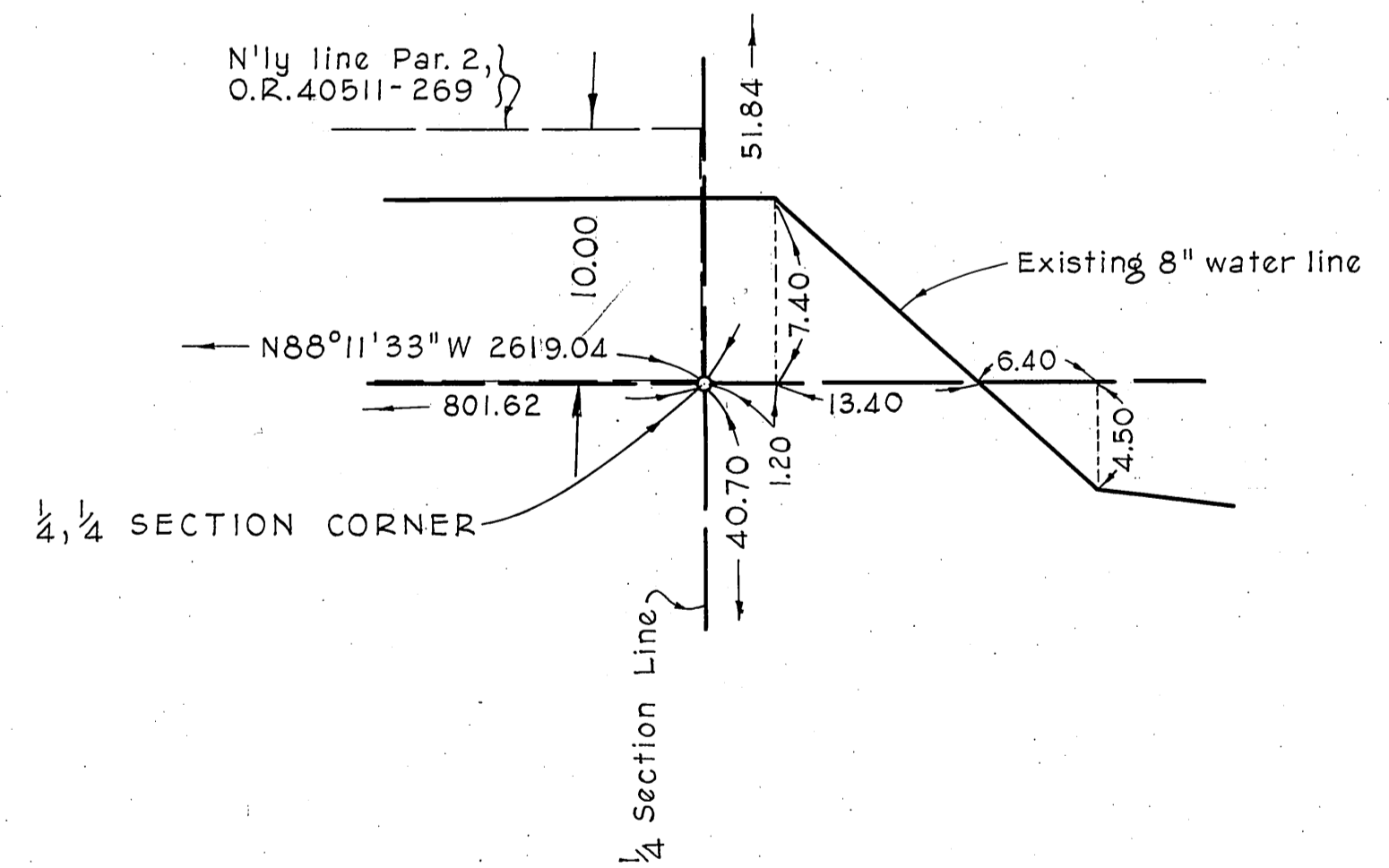
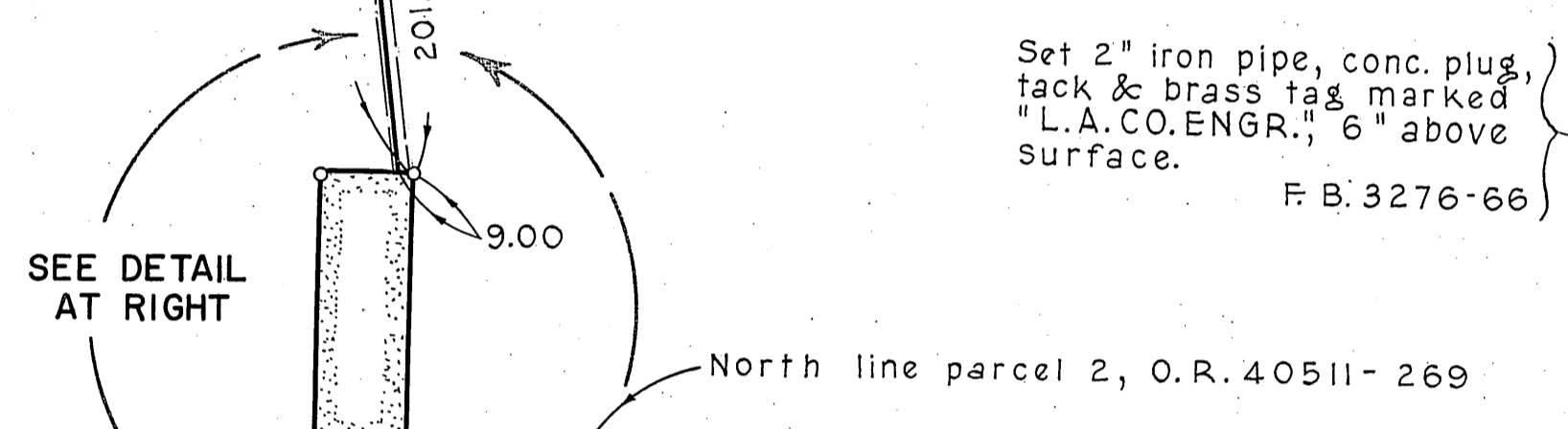
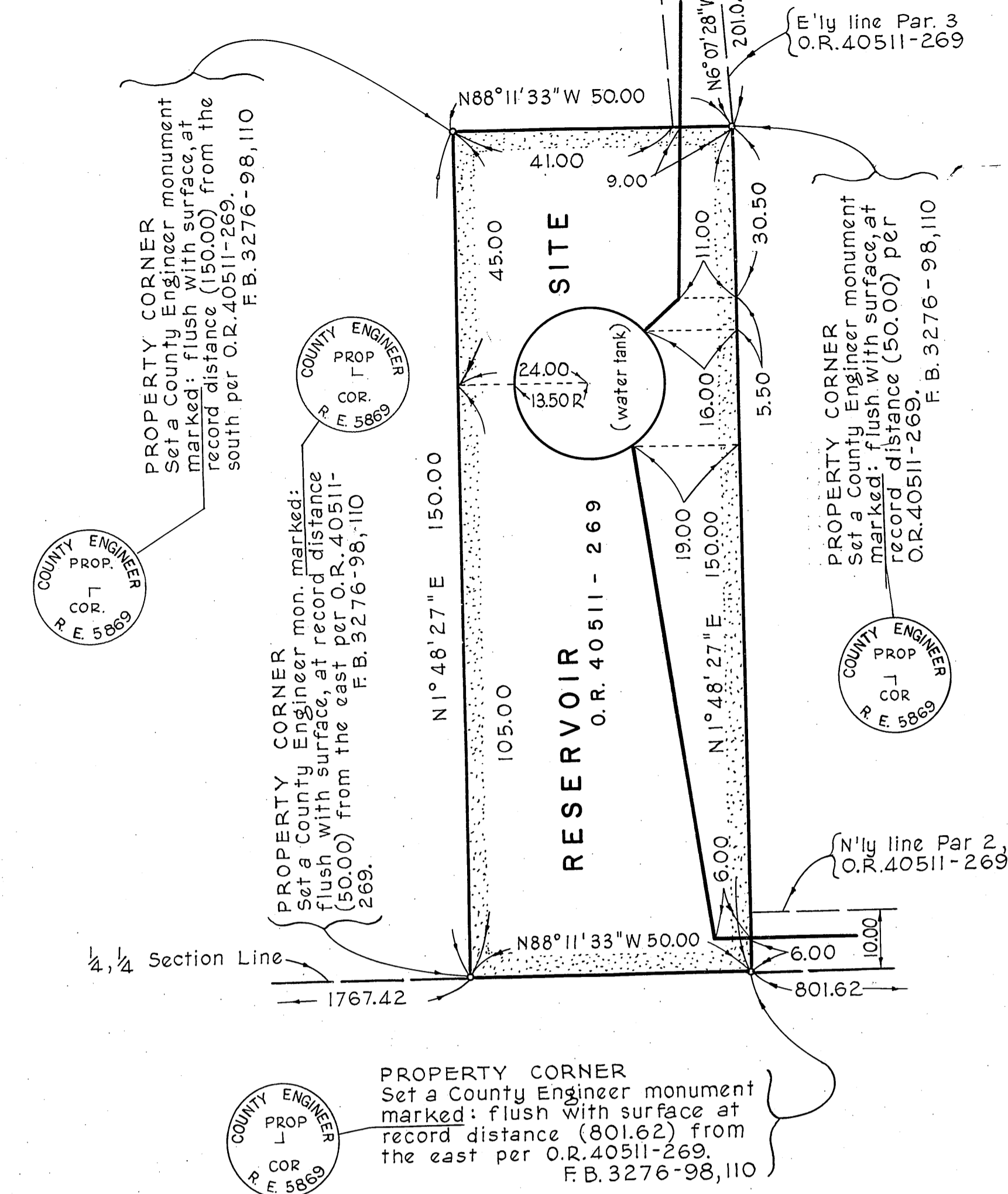
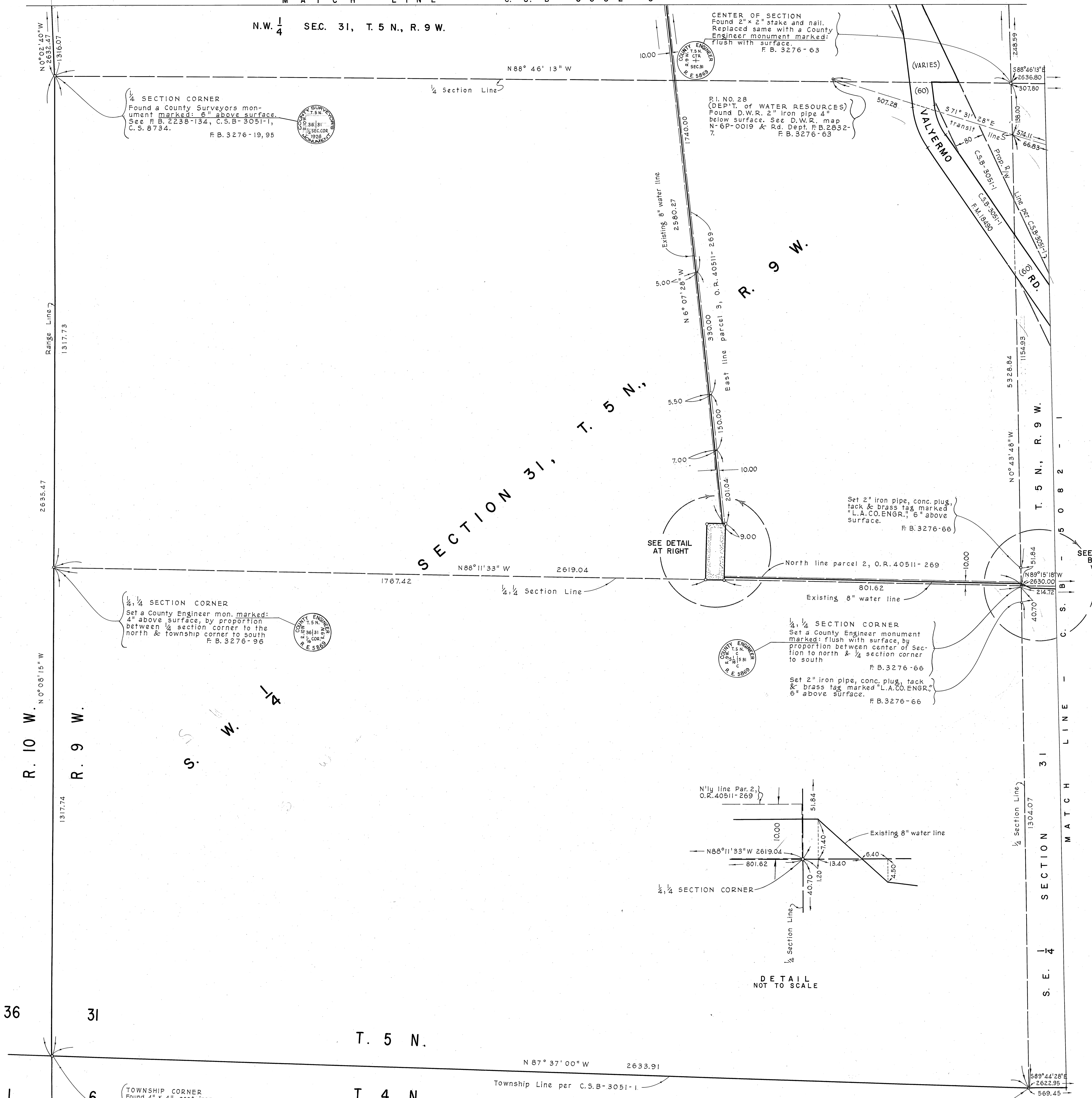


COUNTY OF LOS ANGELES DEPARTMENT OF COUNTY ENGINEER JOHN A. LAMBIE - COUNTY ENGINEER PREPARED BY SURVEY DIVISION I.H.ALEXANDER - DIVISION ENGINEER SURVEYED BY <b>J. MENDONCA</b> CHECKED BY <b>R. HILARIO</b> DRAWN BY <b>G.H. BOYER</b>	<b>AREA MAP OF</b> <b>WATERWORKS DISTRICT No. 39</b> <b>ROCK CREEK</b> <b>WATERWORKS FACILITIES</b>		COUNTY SURVEYOR'S MAP NO. <b>B-5082</b> SHEET 1 OF 5 SHEETS FILED: <i>[Signature]</i> 7/5 1972 DEPUTY SURVEYED <b>MAY 8 JUNE, 1969</b> REFERENCE F.B. 3276-61-110	REVISION NO. BY DATE
	BASIS OF BEARINGS THE BEARING OF THE SOUTH LINE OF THE SOUTH- WEST 1/4 OF SECTION 31, T. 4 N., R. 9 W., (N 87° 37' 00" W) AS SHOWN ON C.S.B-3051-1			JOB NUMBER 3382.01 INDEX MAP NO. 66
	COUNTY ENGINEER JOHN A. LAMBIE COUNTY ENGINEER JOHN A. LAMBIE			
	COUNTY ENGINEER JOHN A. LAMBIE COUNTY ENGINEER JOHN A. LAMBIE			
	COUNTY ENGINEER JOHN A. LAMBIE COUNTY ENGINEER JOHN A. LAMBIE			

N.W. 1/4 SEC. 31, T. 5 N., R. 9 W.



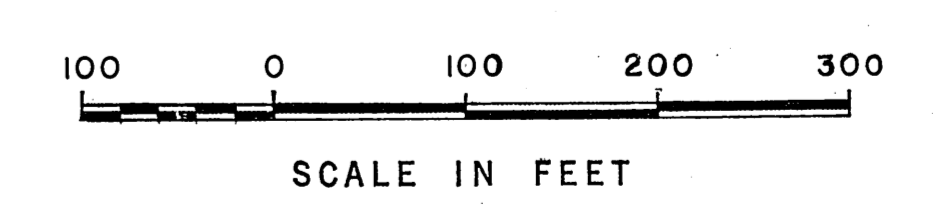
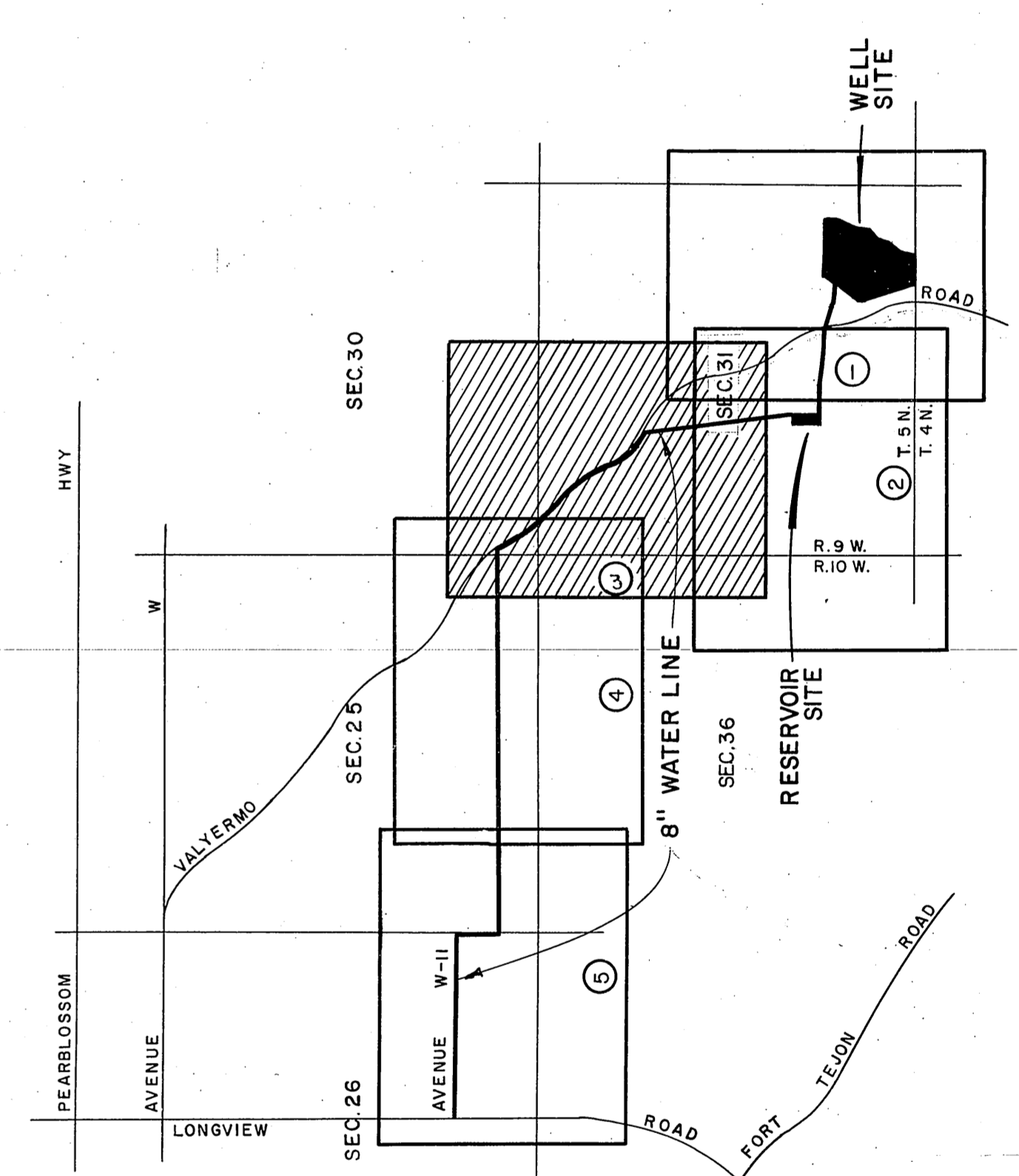
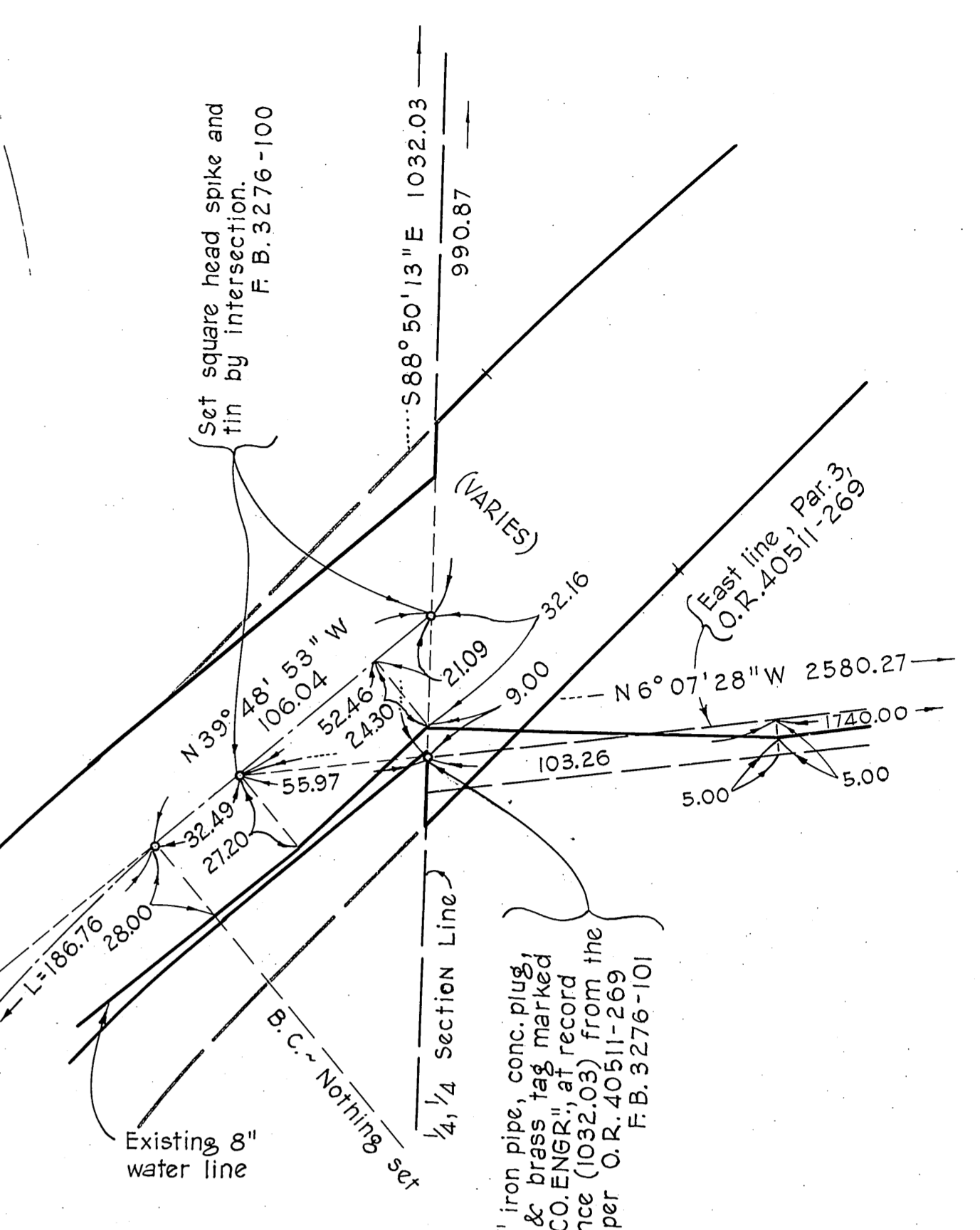
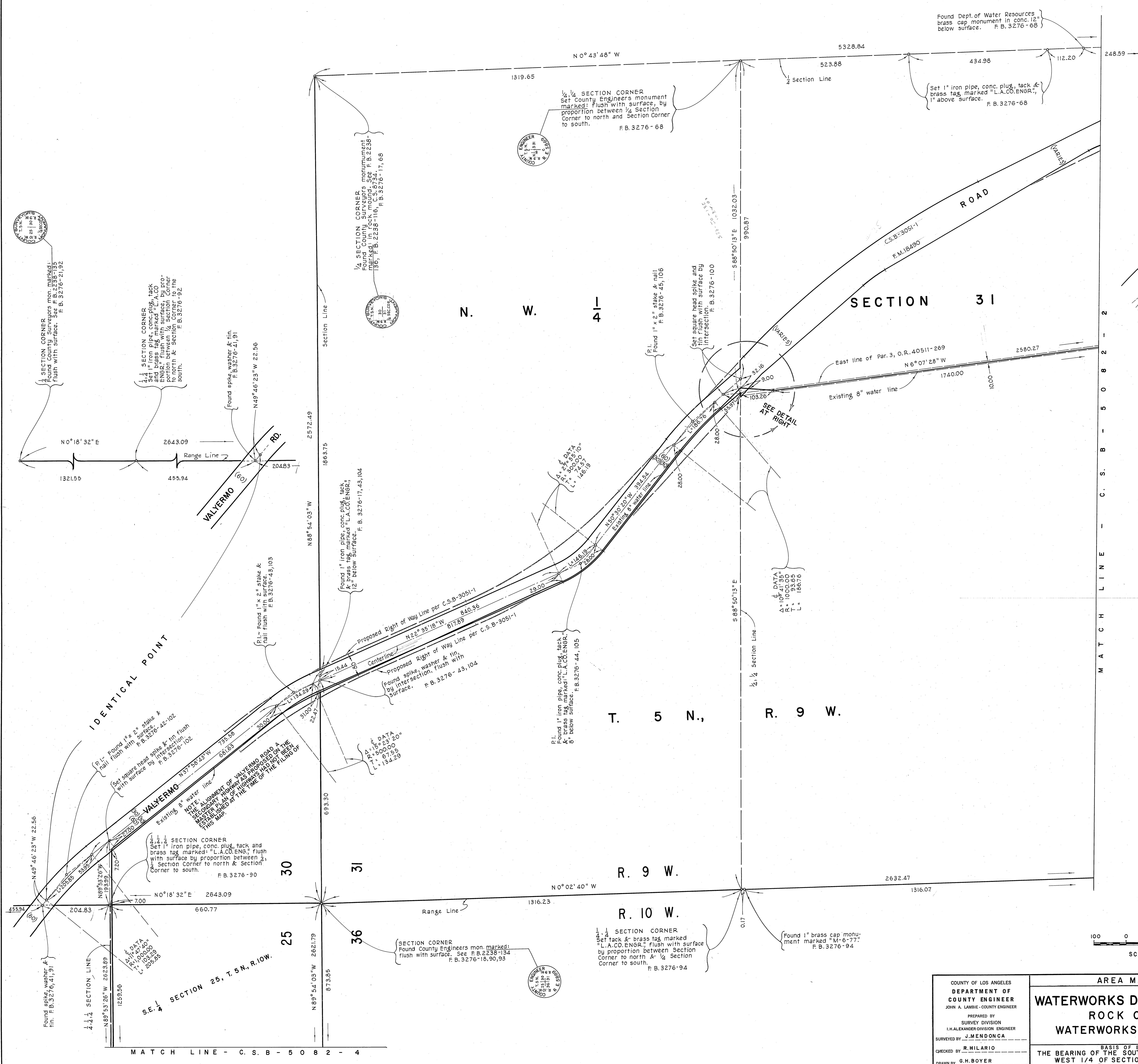
TOWNSHIP CORNER  
Found 4" x 4" cast iron post, conc. plug, & nail 30" above surface. See F.B. 2260-242, C.S. 8734, C.S. 2617, C.S.B-3051-1. Replaced post with a County Engineer monument marked 4" above surface.  
F.B. 3276-20,97

1/4 SECTION CORNER  
Found a County Surveyors monument marked: 8" above surface. See F.B. 158-21, F.B. 77-84, F.B. 782-99, F.B. 960-140, F.B. 2293-111, F.B. 3276-11,67

COUNTY OF LOS ANGELES  
DEPARTMENT OF  
COUNTY ENGINEER  
JOHN A. LAMBIE - COUNTY ENGINEER  
PREPARED BY  
SURVEY DIVISION  
I.H. ALEXANDER DIVISION ENGINEER  
SURVEYED BY J. MENDONCA  
CHECKED BY R. HILARIO  
DRAWN BY G.H. BOYER

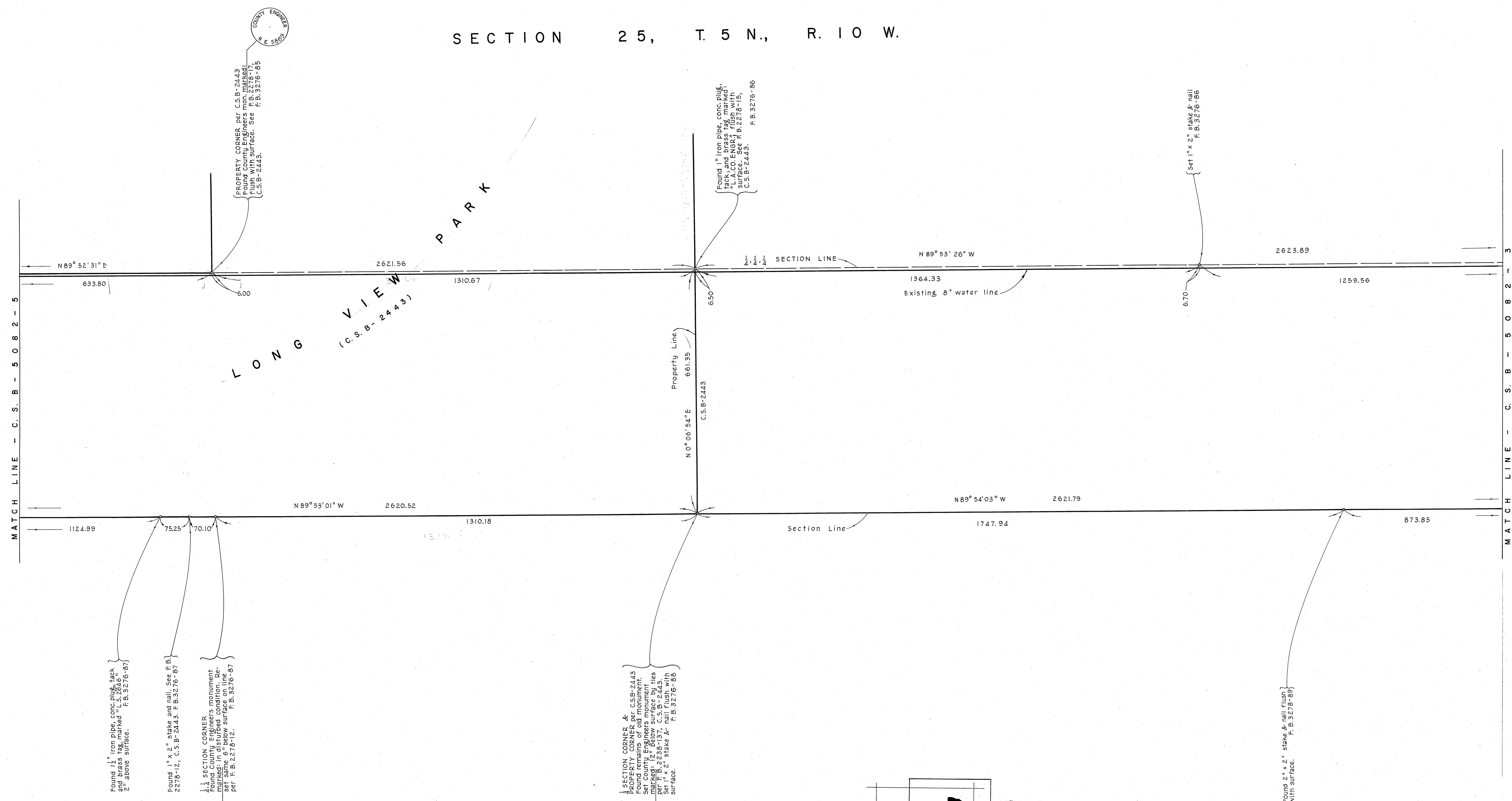
AREA MAP OF  
**WATERWORKS DISTRICT No. 39**  
ROCK CREEK  
WATERWORKS FACILITIES  
BASIS OF BEARINGS  
THE BEARING OF THE SOUTH LINE OF THE SOUTH-  
WEST 1/4 OF SECTION 31, T. 4 N., R. 9 W.,  
(N 87° 37' 00" W) AS SHOWN ON C.S.B-3051-1

COUNTY SURVEYOR'S MAP NO. <b>B-5082</b>		REVISION NO. BY DATE
SHEET 2 OF 5 SHEETS		
FILED: <i>3/15/19</i> 19 <i>20</i>		
MAY 8 JUNE, 1969		
REFERENCE F. B. 3276-61-110		
JOB NUMBER 6382.01	INDEX MAP NO. 66	



COUNTY OF LOS ANGELES DEPARTMENT OF COUNTY ENGINEER JOHN A. LAMBIE - COUNTY ENGINEER PREPARED BY SURVEY DIVISION I.H. ALEXANDER - DIVISION ENGINEER SURVEYED BY J. MENDONCA CHECKED BY R. HILARIO DRAWN BY G.H. BOYER	<b>AREA MAP OF</b> <b>WATERWORKS DISTRICT No. 39</b> <b>ROCK CREEK</b> <b>WATERWORKS FACILITIES</b>		COUNTY SURVEYOR'S MAP NO. <b>B-5082</b>	REVISION NO. BY DATE
	SHEET 3 OF 5 SHEETS FILED: <i>5/18/99</i>		SURVEYED <i>R. J. Mitchell</i> DEPUTY	MAY 8 JUNE, 1969
	BASIS OF BEARINGS THE BEARING OF THE SOUTH LINE OF THE SOUTH- WEST 1/4 OF SECTION 31, T. 4 N., R. 9 W., (N 87° 37' 00" W) AS SHOWN ON C.S.B-3051-1		REFERENCE F. B. 3276-61-110	INDEX MAP NO. 66
	DRAWN BY G.H. BOYER		SHEET NUMBER 5382/11	INDEX MAP NO. 66
			DATE 5/18/99	BY <i>R. J. Mitchell</i>

SECTION 25, T. 5 N., R. 10 W.



Found 1" iron pipe, conc. plug, tack  
and brass has marked "L.S. 2276-87"  
2" above surface. F.B. 3276-87

Found 1" x 2" stake and nail. See F.B.  
2276-87, C.S.B-2443, F.B. 3276-87

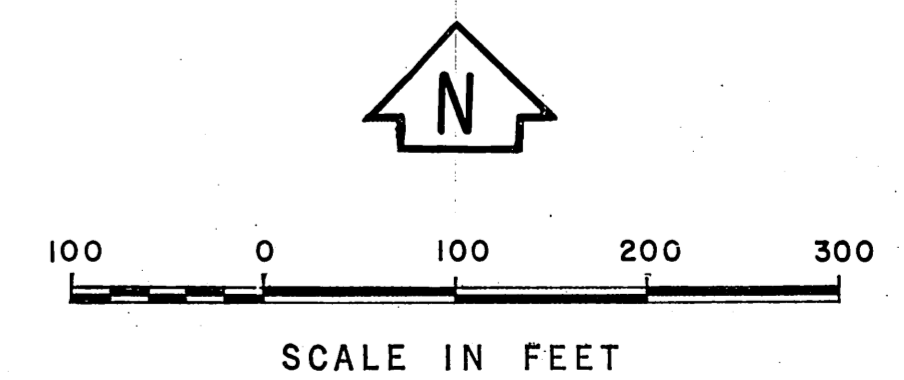
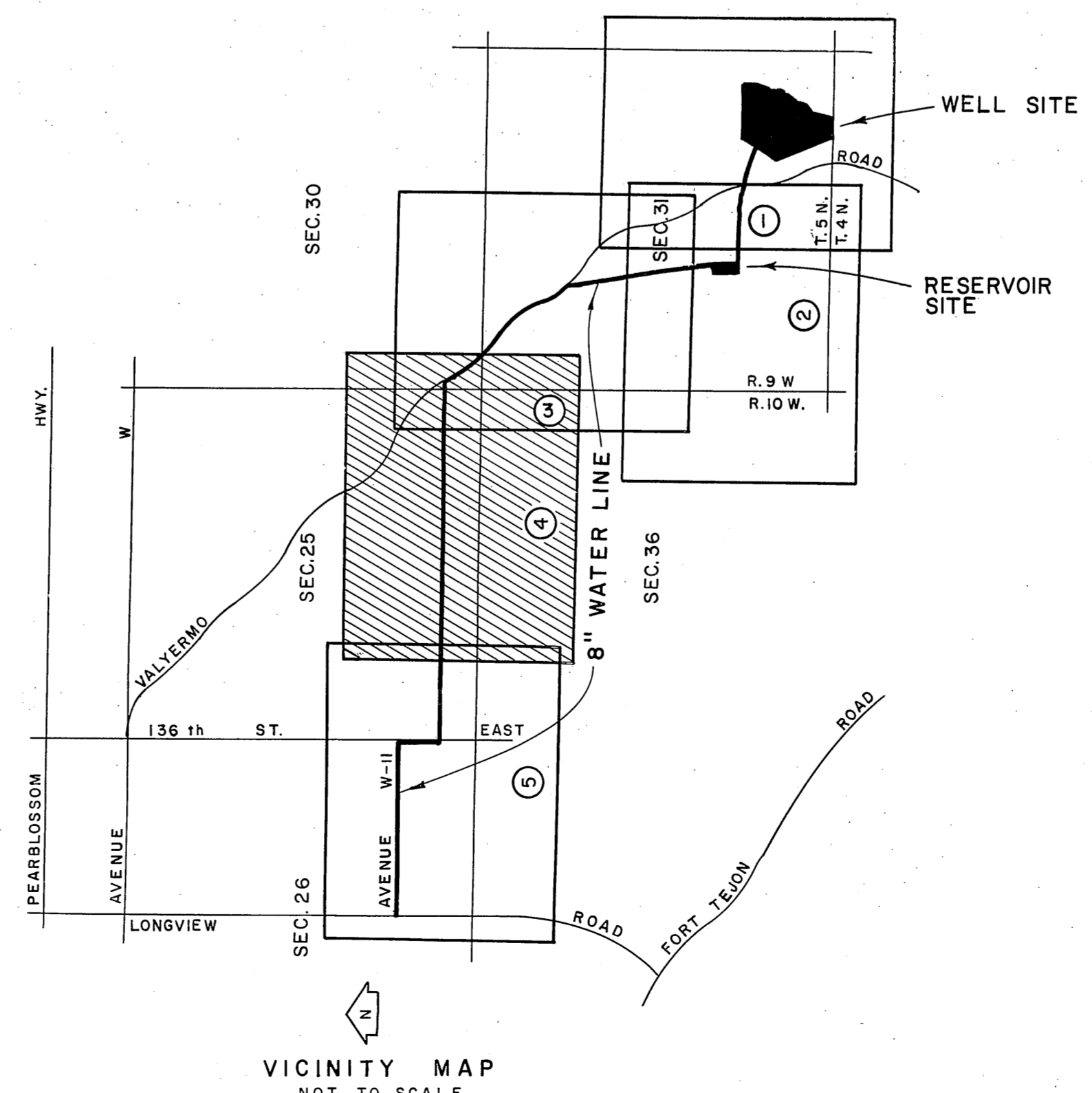
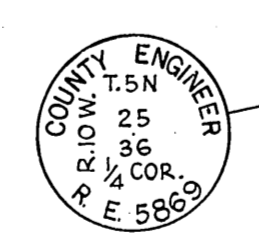
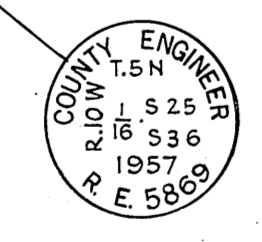
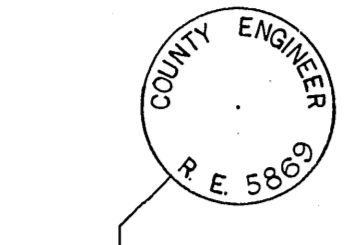
SECTION CORNER  
Found County Engineer's monument  
marked in disturbed condition. Tie  
to monument in Section 26. F.B. 3276-87  
See F.B. 2276-87

SECTION CORNER &  
PROPERTY MONUMENT  
Found County Engineer's monument  
marked in disturbed condition. Tie  
to monument in Section 26. F.B. 3276-88  
See F.B. 2276-88

Found 1" iron pipe, conc. plug,  
tack and brass has marked "L.S. 2276-85"  
with surface. See F.B. 2276-85,  
C.S.B-2443, F.B. 3276-86

Set 1" x 2" stake & nail  
F.B. 3276-86

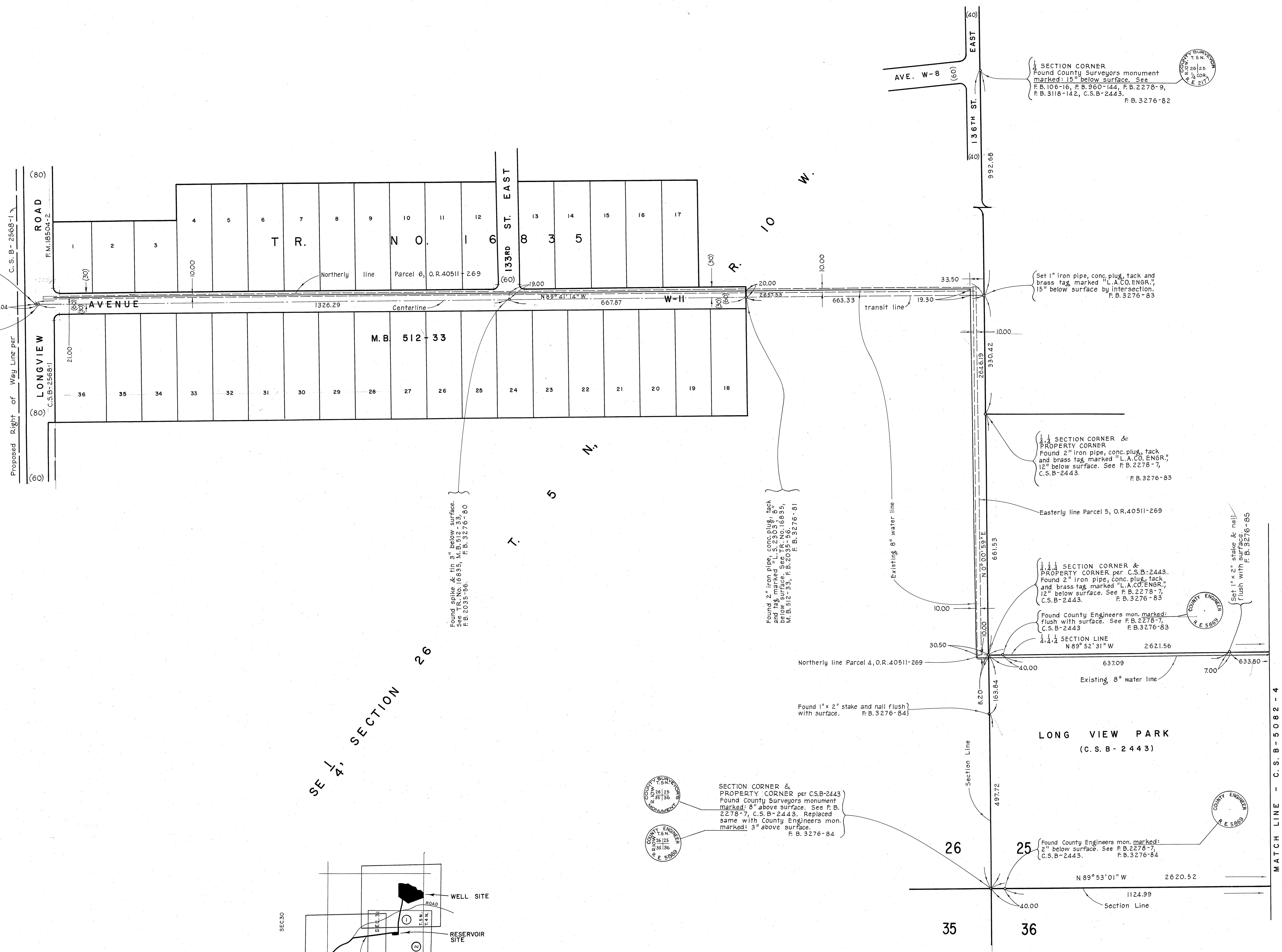
Found 2" x 2" stake & nail. (Tie)  
with surface. F.B. 3276-89



COUNTY OF LOS ANGELES DEPARTMENT OF COUNTY ENGINEER JOHN A. LAMBIE - COUNTY ENGINEER PREPARED BY SURVEY DIVISION J. ALEXANDER - DIVISION ENGINEER SURVEYED BY - J. MENDONCA CHECKED BY - R. HILARIO DRAWN BY - G. H. BOYER	AREA MAP OF <b>WATERWORKS DISTRICT No. 39</b> ROCK CREEK WATERWORKS FACILITIES		COUNTY SURVEYOR'S MAP NO. <b>B-5082</b> SHEET 4 OF 5 SHEETS FILED: <i>[Signature]</i> DEPUTY MAY 9 JUNE, 1969 REFERENCE F. B. 3276-61-110 INDEX MAP NO. 66	REVISION NO. BY DATE
	BASIS OF BEARINGS THE BEARING OF THE SOUTH LINE OF THE SOUTH- WEST 1/4 OF SECTION 31, T. 4 N., R. 9 W., (N 87° 37' 00" W) AS SHOWN ON C.S.B-3081-1			
	FOUND 1" IRON PIPE, CONC. PLUG, TACK AND BRASS HAS MARKED "L.S. 2276-87" 2" ABOVE SURFACE. F.B. 3276-87			
	FOUND 1" X 2" STAKE AND NAIL. SEE F.B. 2276-87, C.S.B-2443, F.B. 3276-87			
	SECTION CORNER FOUND COUNTY ENGINEER'S MONUMENT MARKED IN DISTURBED CONDITION. TIE TO MONUMENT IN SECTION 26. F.B. 3276-87 SEE F.B. 2276-87			

Found punch mark in tin }  
See F.B. 3118-137,  
F.B. 3276-79

Found nail and tin flush }  
with surface. See F.B.  
3118-137,  
F.B. 3276-79



Found spike & tin 3" below surface.  
See T.R. NO. 16635, M.B. 512-33,  
F.B. 2095-96,  
F.B. 3276-80

Found 2" iron pipe, conc. plug, tack  
& brass tag marked "L.A. CO. ENGR."  
12" below surface. See T.R. NO. 16635,  
M.B. 512-33, F.B. 2035-56,  
F.B. 3276-81

SECTION CORNER  
Found County Surveyors monument  
marked: 15" below surface. See  
F.B. 106-16, F.B. 960-144, F.B. 2278-9,  
F.B. 3118-142, C.S.B.-2443.  
F.B. 3276-82

Set 1" iron pipe, conc. plug, tack and  
brass tag marked "L.A. CO. ENGR."  
15" below surface by intersection.  
F.B. 3276-83

SECTION CORNER &  
PROPERTY CORNER  
Found 2" iron pipe, conc. plug, tack  
and brass tag marked "L.A. CO. ENGR."  
12" below surface. See F.B. 2278-7,  
C.S.B.-2443.  
F.B. 3276-83

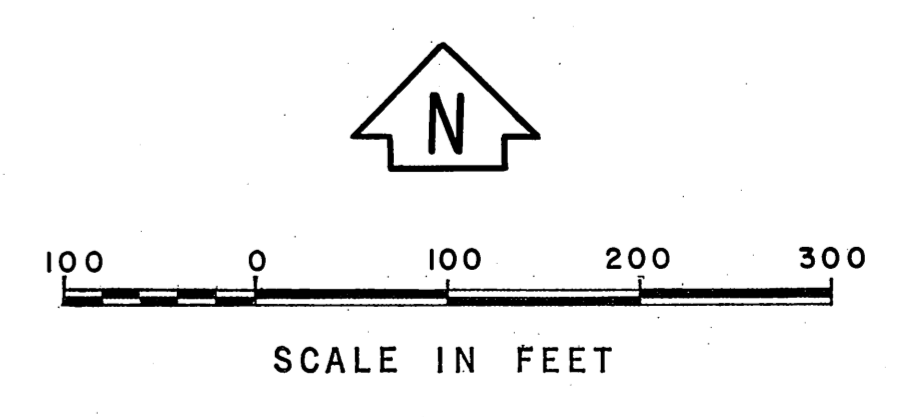
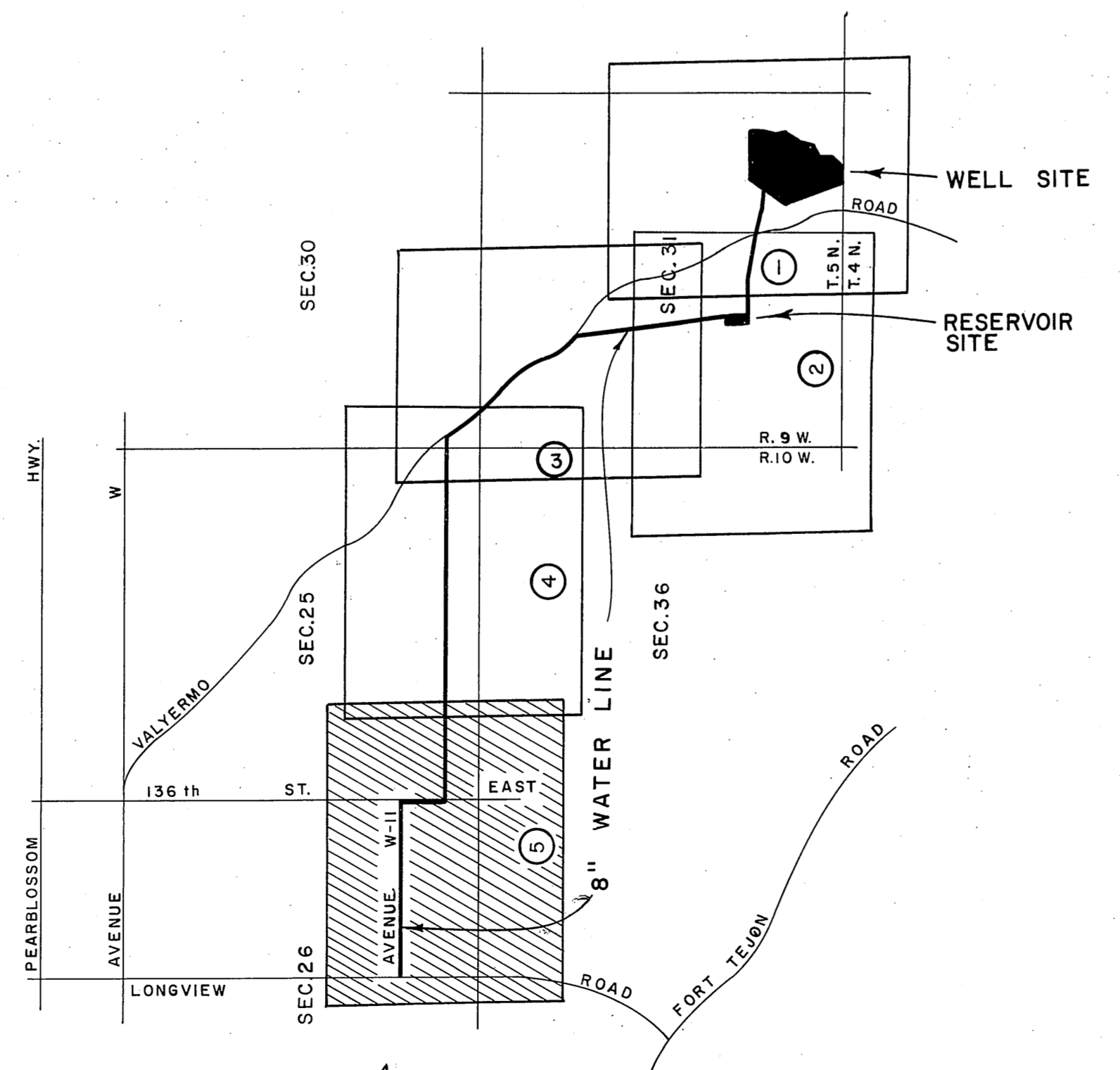
SECTION CORNER &  
PROPERTY CORNER per C.S.B.-2443.  
Found 2" iron pipe, conc. plug, tack  
and brass tag marked "L.A. CO. ENGR."  
12" below surface. See F.B. 2278-7,  
C.S.B.-2443.  
F.B. 3276-83

Found County Engineers mon. marked:  
Flush with surface. See F.B. 2278-7,  
C.S.B.-2443  
F.B. 3276-83

SECTION LINE  
N 89° 52' 31" W  
2621.56

SECTION CORNER &  
PROPERTY CORNER per C.S.B.-2443  
Found County Surveyors monument  
marked: 8" above surface. See F.B.  
2278-7, C.S.B.-2443. Replaced  
same with County Engineers mon.  
marked: 3" above surface.  
F.B. 3276-84

Found County Engineers mon. marked:  
2" below surface. See F.B. 2278-7,  
C.S.B.-2443.  
F.B. 3276-84



COUNTY OF LOS ANGELES DEPARTMENT OF COUNTY ENGINEER JOHN A. LAMBIE - COUNTY ENGINEER PREPARED BY SURVEY DIVISION I.H. ALEXANDER - DIVISION ENGINEER SURVEYED BY J. MENDONCA CHECKED BY R. HILARIO DRAWN BY G.H. BOYER	AREA MAP OF	COUNTY SURVEYOR'S MAP NO.
	WATERWORKS DISTRICT No. 39	B-5082
	ROCK CREEK	SHEET 5 OF 5 SHEETS
	WATERWORKS FACILITIES	FILED: <i>John B. 1970</i>
	BASIS OF BEARINGS THE BEARING OF THE SOUTH LINE OF THE SOUTH- WEST 1/4 OF SECTION 31, T. 4 N., R. 9 W., (N 87° 37' 00" W) AS SHOWN ON C.S.B.-3051-1	SURVEYED MAY 9 JUNE, 1969 REFERENCE F.B. 3276-61-110 JOB NUMBER 5353-11 INDEX MAP NO. 66