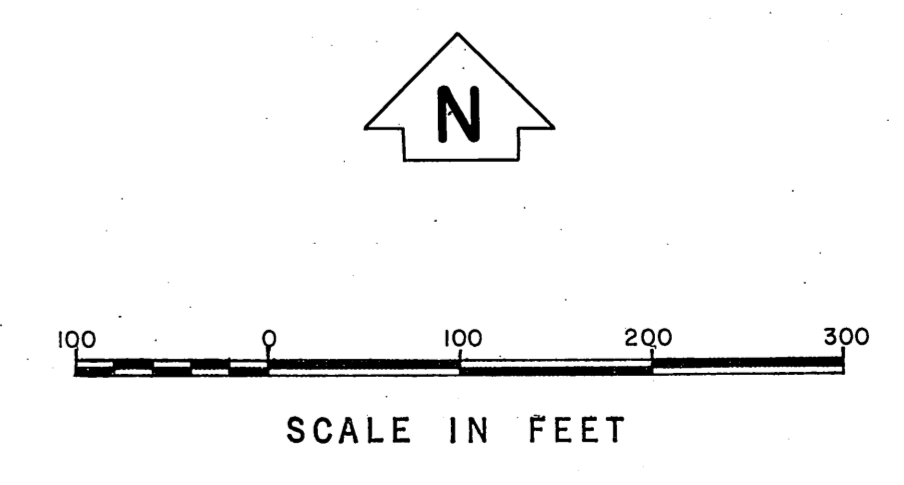
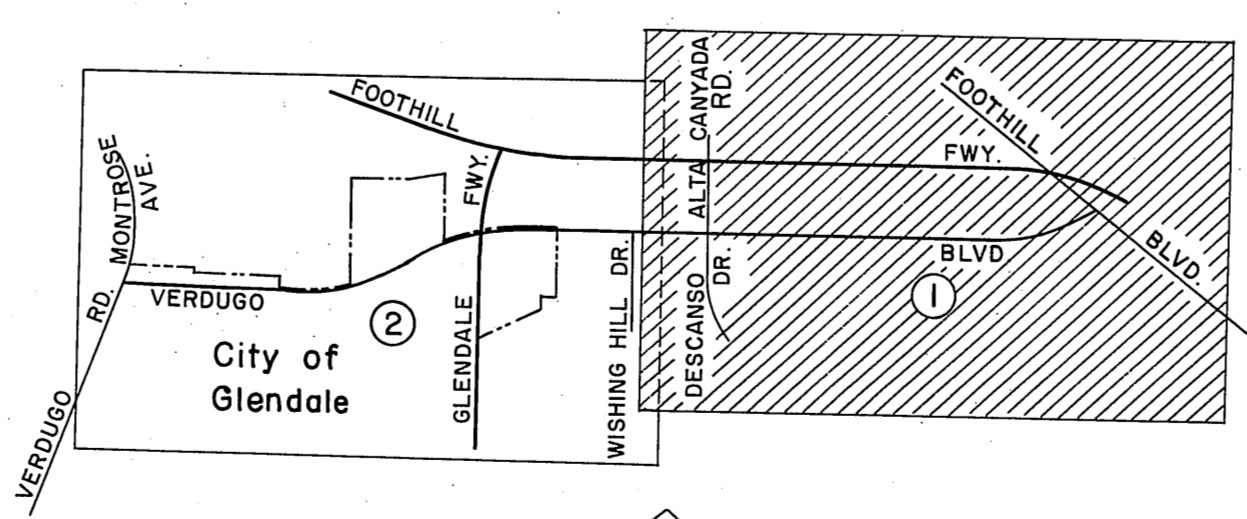
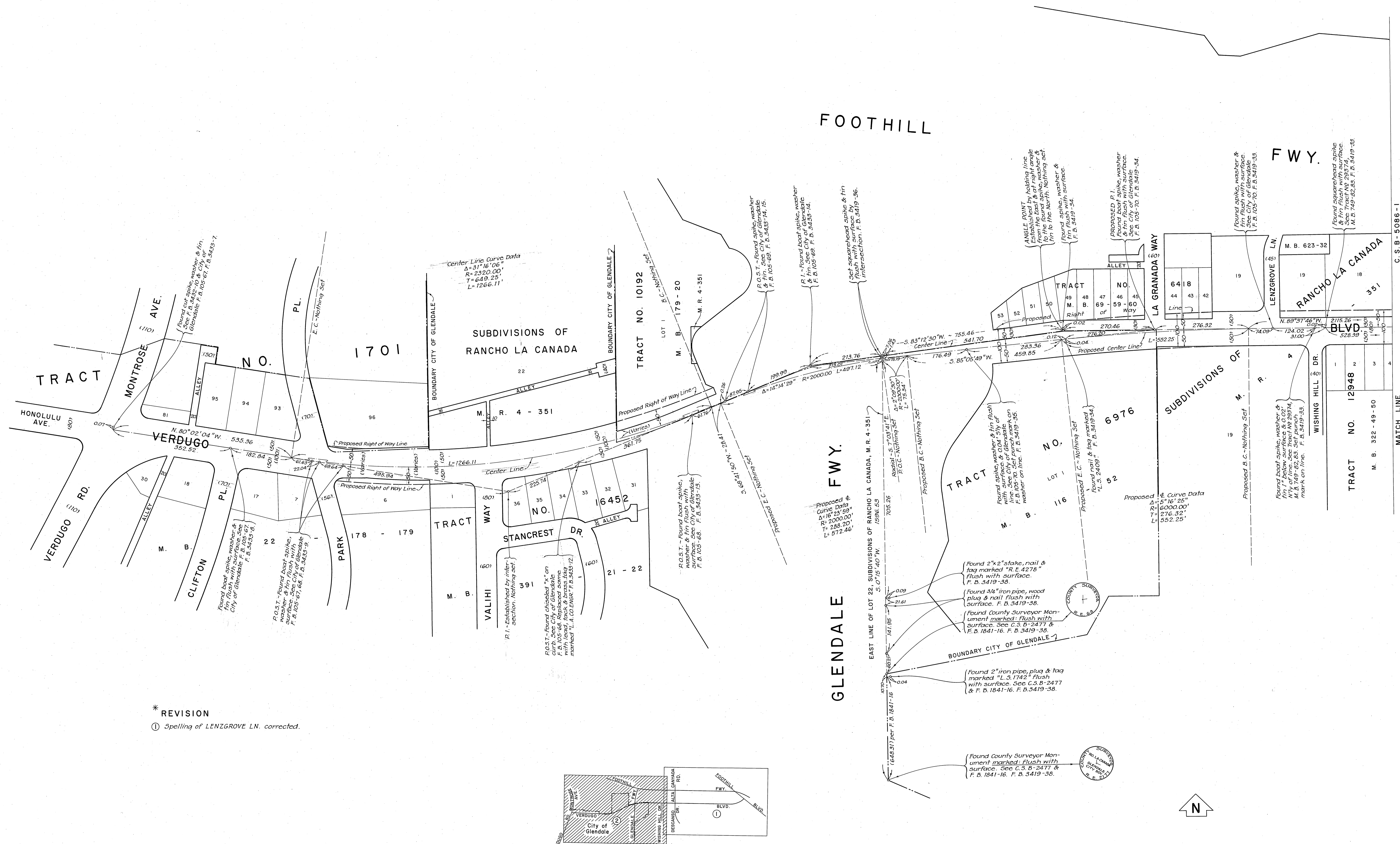


MATCH LINE C. S. B. - 5086 - 2

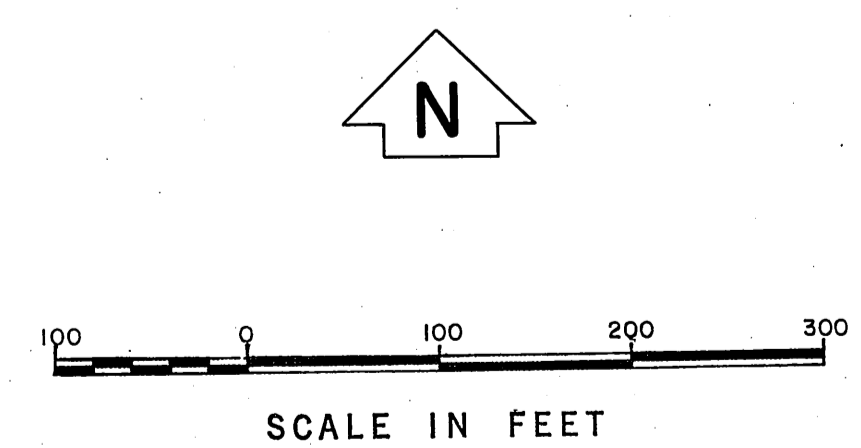
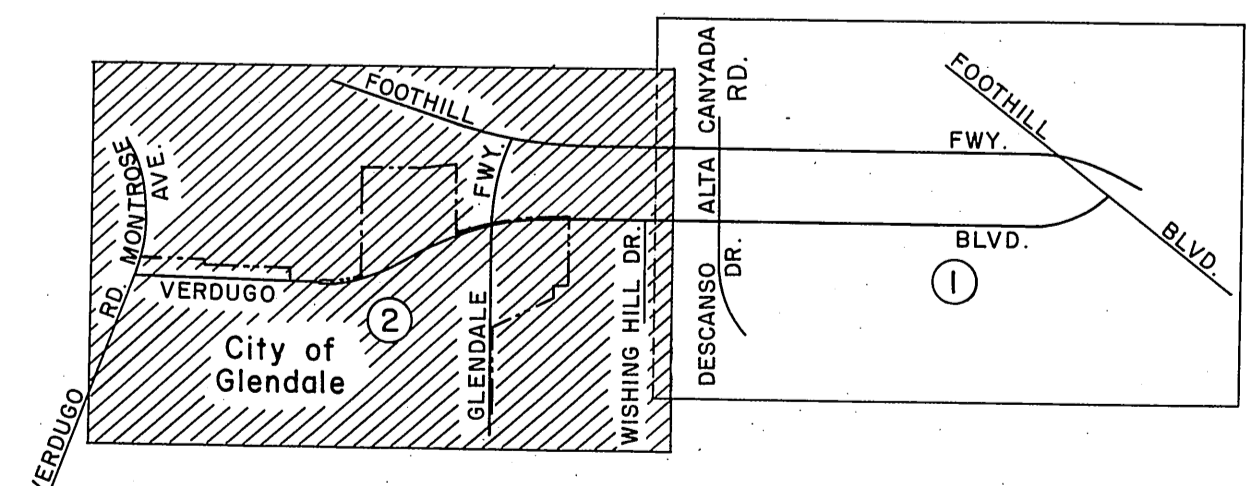


REVISIONS: Cadastrial Data Revised.

COUNTY OF LOS ANGELES DEPARTMENT OF COUNTY ENGINEER JOHN A. LAMBIE - COUNTY ENGINEER PREPARED BY SURVEY DIVISION I. H. ALEXANDER - DIVISION ENGINEER S. E. GUZIDO SURVEYED BY F. E. BROOKS CHECKED BY G. D. BAILEY DRAWN BY M. HAMASU	ALIGNMENT MAP OF VERDUGO BLVD. FROM FOOTHILL BLVD. TO VERDUGO RD. BASIS OF BEARINGS CALIFORNIA COORDINATE SYSTEM, ZONE 7		COUNTY SURVEYOR'S MAP NO. B-5086 SHEET 1 OF 2 SHEETS FILED: <i>March 22, 1970</i> <i>Scott J. Alexander</i> DEPUTY SURVEYED SEPT. 1967 & JULY 1969 F. B. 3419 F. B. 3433 JOB NUMBER 0087.24 INDEX MAP NO. 51	REVISION NO. BY DATE 1 A.M. 9-29-78
--	--	--	--	---



* REVISION
 ① Spelling of LENZGROVE LN. corrected.



COUNTY OF LOS ANGELES DEPARTMENT OF COUNTY ENGINEER JOHN A. LAMBIE - COUNTY ENGINEER PREPARED BY SURVEY DIVISION I.H. ALEXANDER - DIVISION ENGINEER SURVEYED BY CHECKED BY DRAWN BY	ALIGNMENT MAP OF VERDUGO BLVD. FROM FOOTHILL BLVD. TO VERDUGO RD. BASIS OF BEARINGS CALIFORNIA COORDINATE SYSTEM, ZONE 7		COUNTY SURVEYOR'S MAP NO. B-5086 SHEET 2 OF 2 SHEETS FILED: <i>Jan 22, 1972</i> DEPUTY SURVEYED SEPT. 1967 & JULY 1969 REFERENCE F. B. 3419 F. B. 3433 JOB NUMBER 0097.24 INDEX MAP NO. 51	REVISION * NO. BY DATE ① M.H. 6-17-72
	CHECKED BY <u>G. D. BAILEY</u> DRAWN BY <u>M. HAMASU</u>		F. B. 3419 F. B. 3433 JOB NUMBER 0097.24 INDEX MAP NO. 51	REVISION * NO. BY DATE ① M.H. 6-17-72
	CHECKED BY <u>G. D. BAILEY</u> DRAWN BY <u>M. HAMASU</u>		F. B. 3419 F. B. 3433 JOB NUMBER 0097.24 INDEX MAP NO. 51	REVISION * NO. BY DATE ① M.H. 6-17-72
	CHECKED BY <u>G. D. BAILEY</u> DRAWN BY <u>M. HAMASU</u>		F. B. 3419 F. B. 3433 JOB NUMBER 0097.24 INDEX MAP NO. 51	REVISION * NO. BY DATE ① M.H. 6-17-72