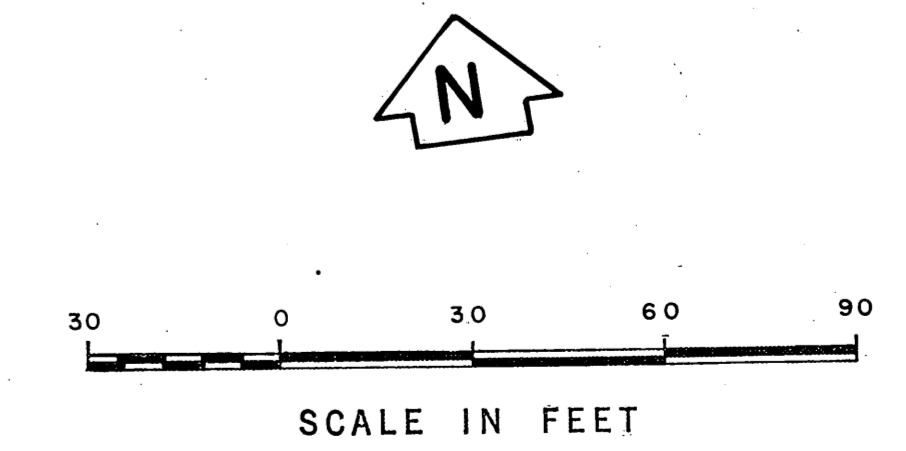
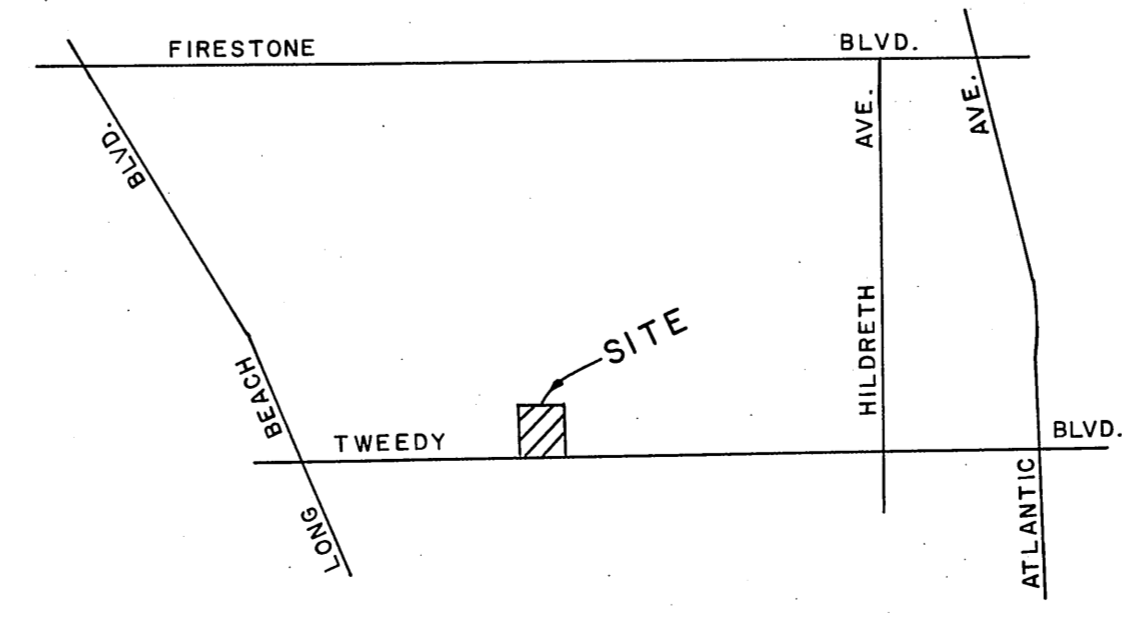
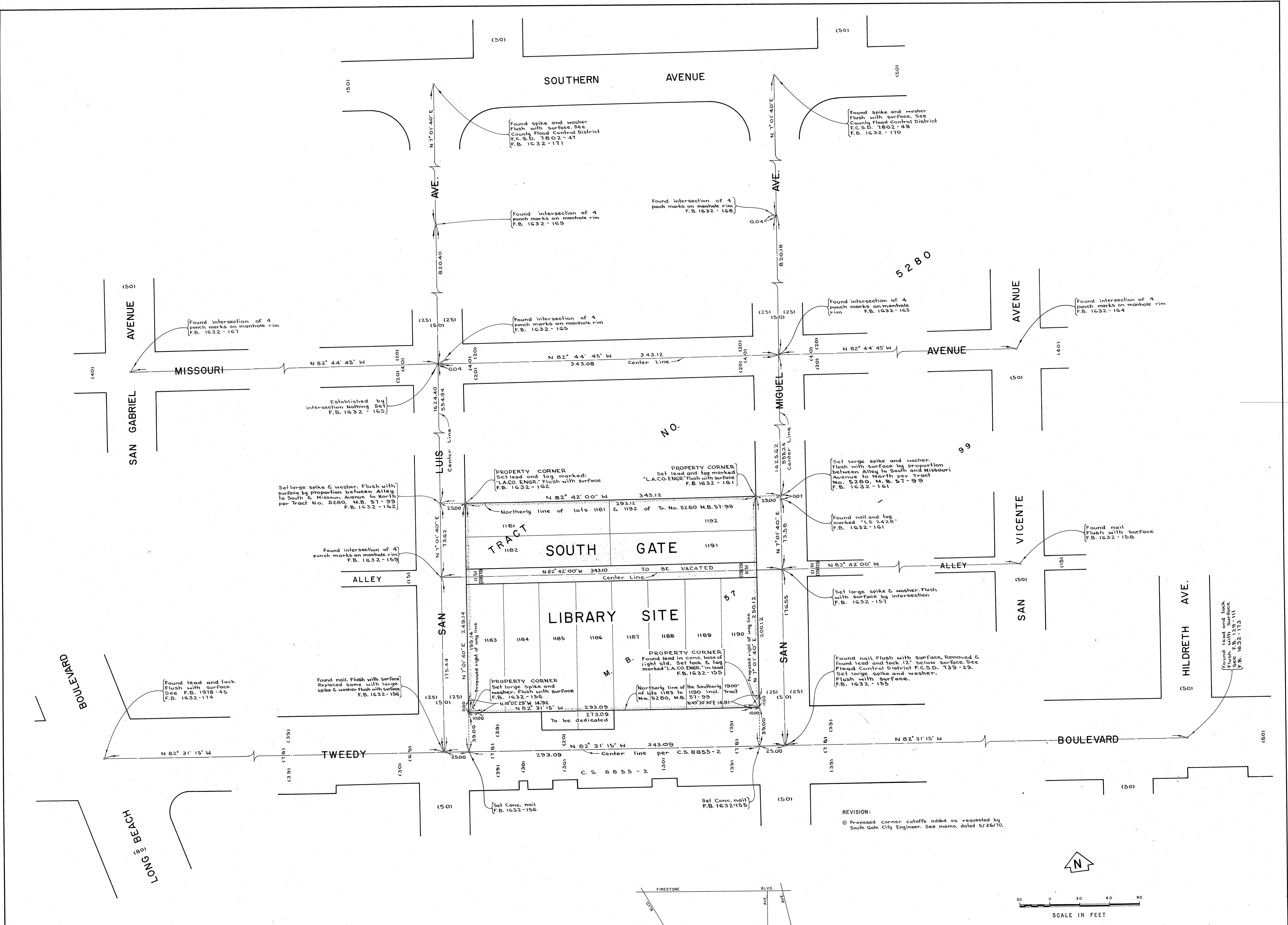


C2B-2083



COUNTY OF LOS ANGELES DEPARTMENT OF COUNTY ENGINEER JOHN A. LAMBIE - COUNTY ENGINEER PREPARED BY SURVEY DIVISION L.H. ALEXANDER - DIVISION ENGINEER SURVEYED BY <u>K. MYERS</u> CHECKED BY <u>J. M. CAVATAIO</u> <u>H. H. F. DONG</u> DRAWN BY <u>R. R. SHEAN</u>	BOUNDARY MAP OF SOUTH GATE LIBRARY SITE FOR TOPOGRAPHY SEE SURVEY DIVISION FILE MAP NO. P.T. H-219.		COUNTY SURVEYOR'S MAP NO. B-5093 SHEET 1 OF 1 SHEET FILED: <u>Nov 1 1970</u> DEPT. NOV. & DEC. 1969 REFERENCE F. B. 1632-153-174	REVISION NO. BY DATE 0 H.H.F.D. 6-17-70
	BASIS OF BEARINGS THE BEARING OF TWEEDY BLVD. (N 82° 31' 15" W.) AS SHOWN ON C. S. 8855-2.			JOB NUMBER 0047.25
				INDEX MAP NO. 32

C2B-2083