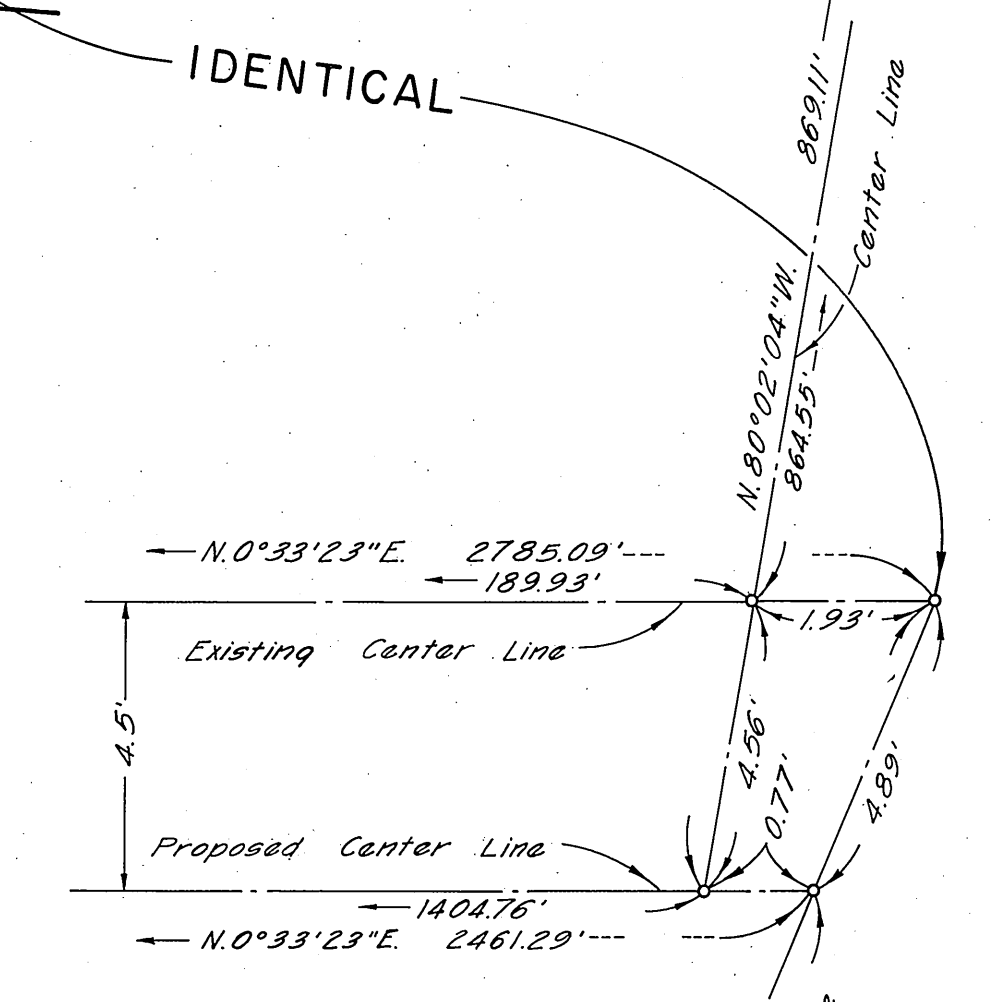


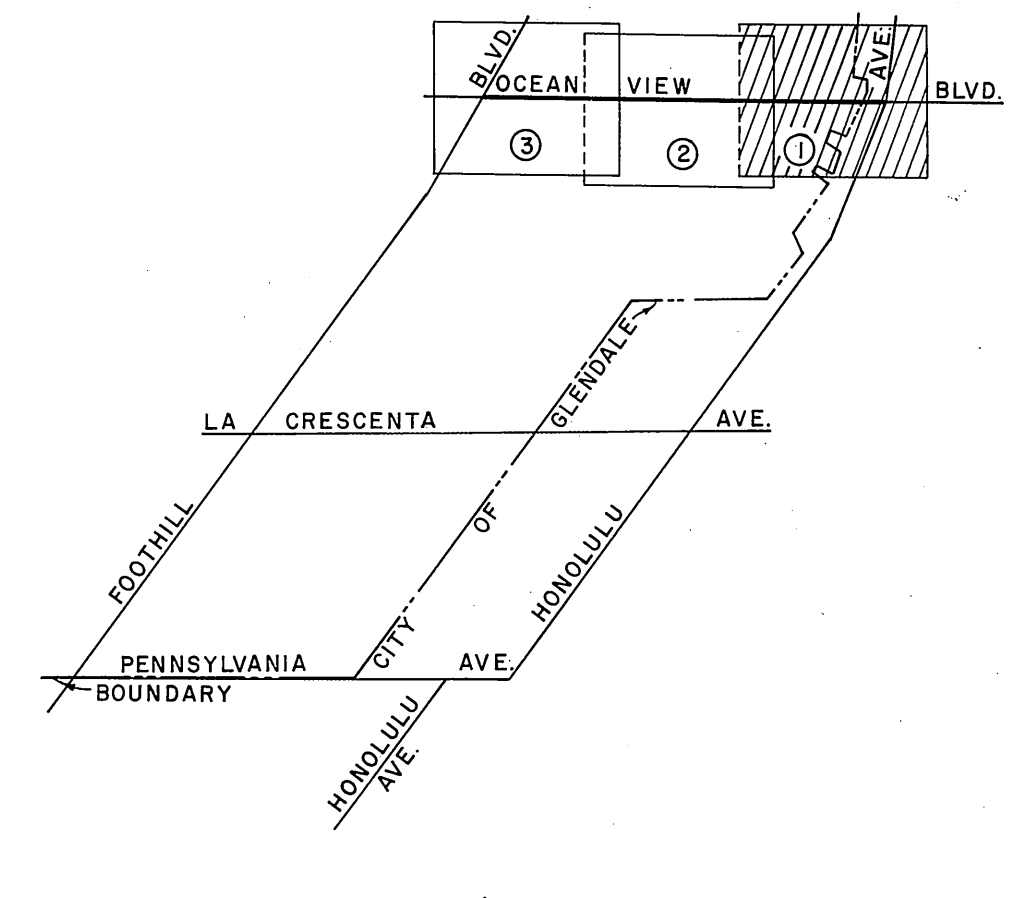
NOTE:  
FOR THE ALIGNMENT OF HONOLULU AVE  
A MAJOR HIGHWAY, AS PROPOSED ON  
THE MASTER PLAN OF HIGHWAYS CONTACT  
CITY OF GLENDALE.

Set lead, tack & brass tag  
marked, "L.A. CO. ENGR. 5"  
below surface in handhole at  
record distance (133') from  
the north per F.B. 259-23.  
F.B. 3418-9.

A County Engineer Monument marked in handhole.  
F.B. 3432-75.



MARGINAL MAP  
NOT TO SCALE



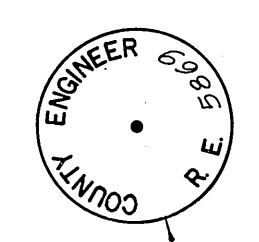
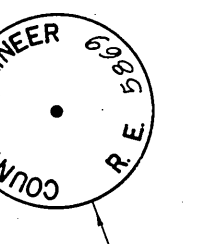
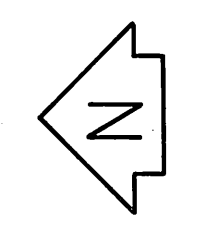
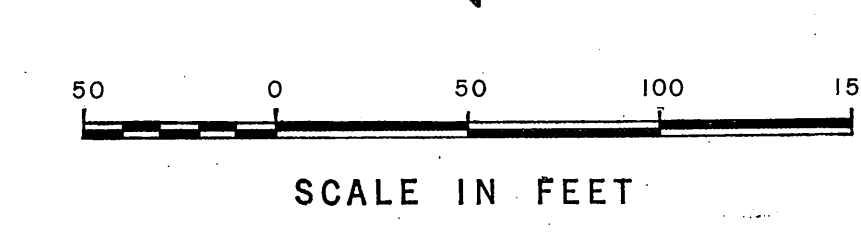
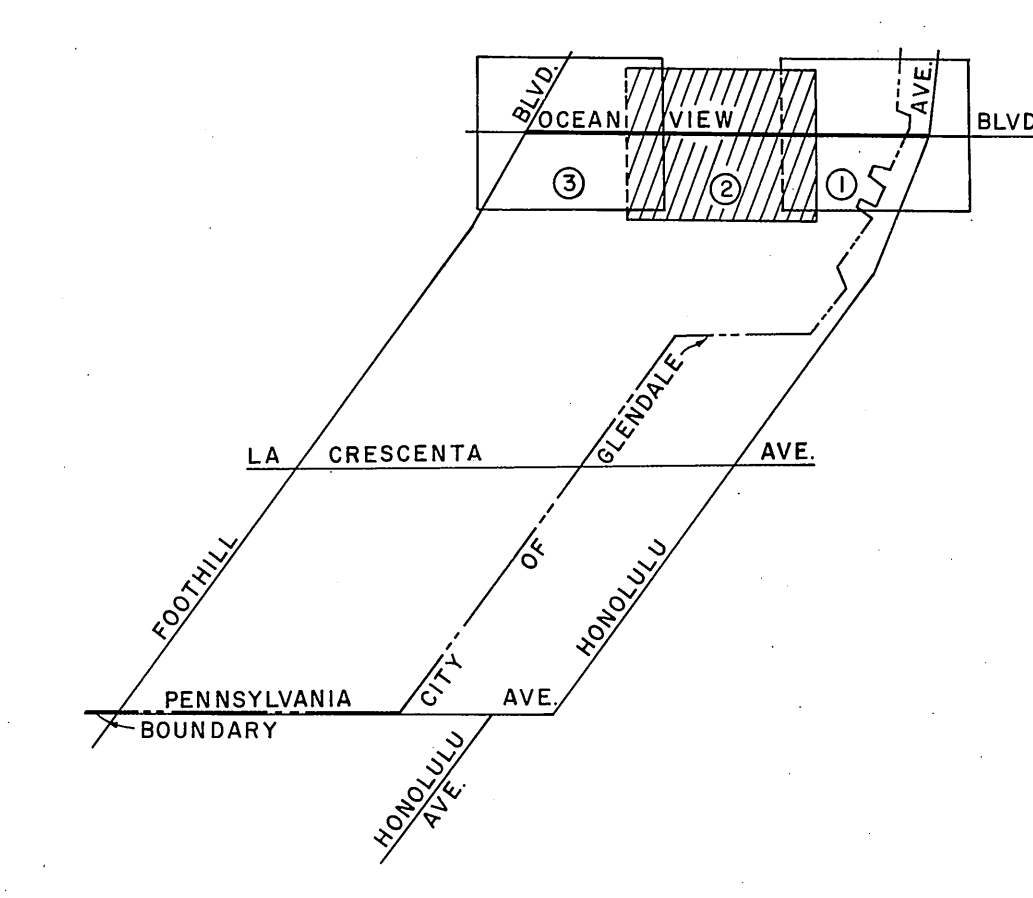
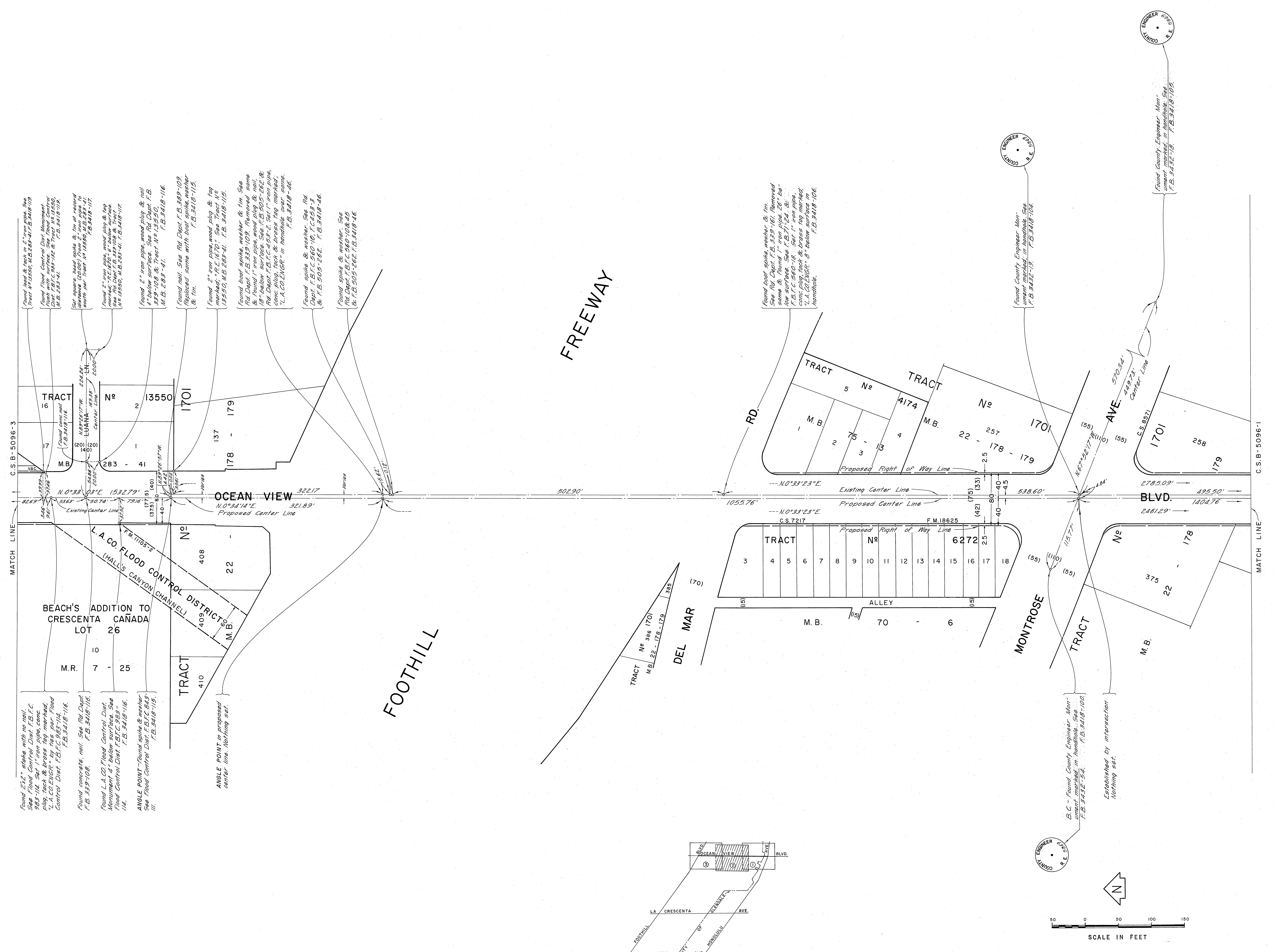
VICINITY MAP  
NOT TO SCALE

Found spike & washer See  
F.B. 259-25. Replaced  
same with boot spike &  
washer. F.B. 3418-13.

Found cut spike & washer.  
See F.B. 259-25.  
F.B. 3418-14.

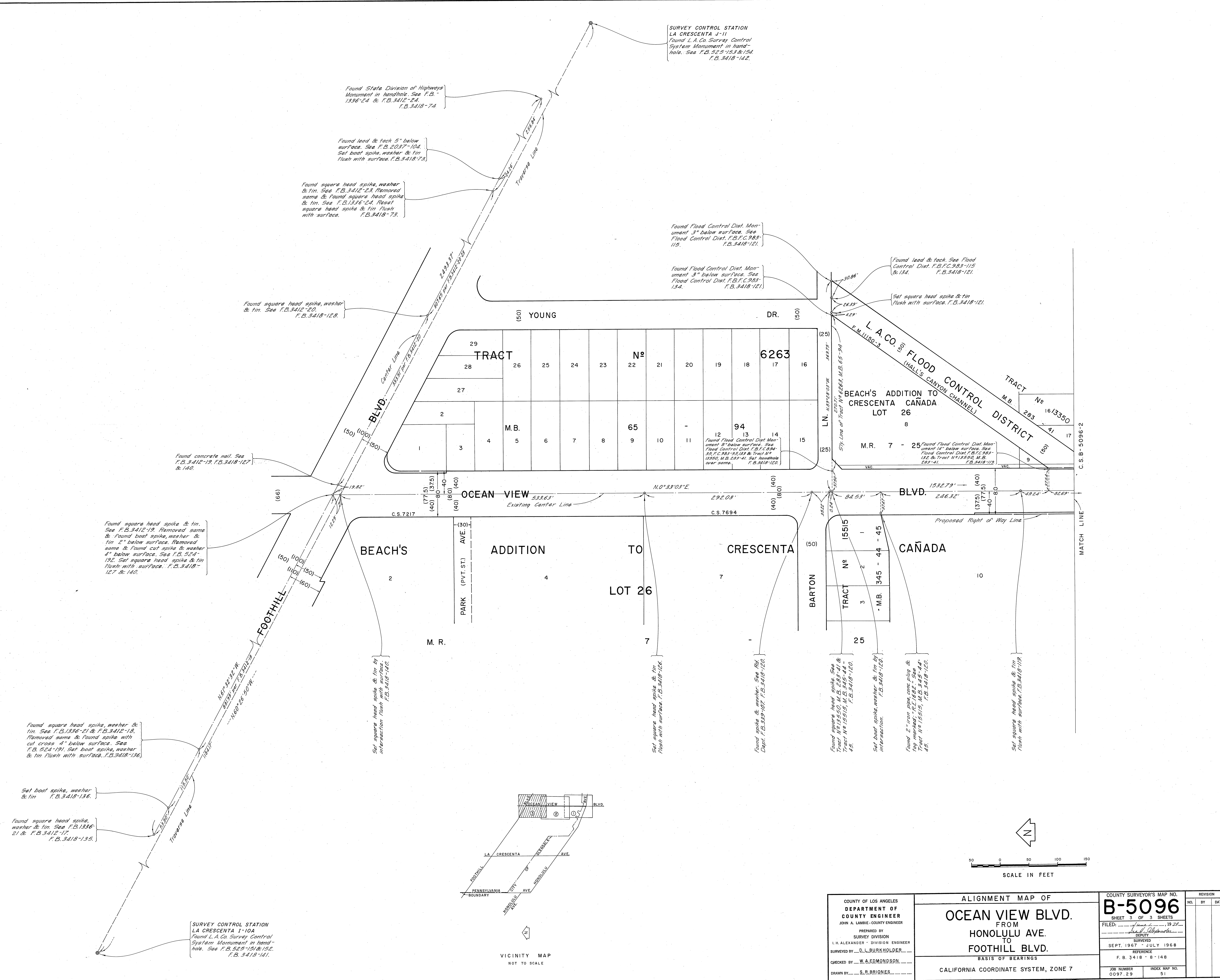
Found spike & washer. See  
F.B. 71-26 & 132 & F.B. 259-  
26. F.B. 3418-15.

COUNTY OF LOS ANGELES DEPARTMENT OF COUNTY ENGINEER JOHN A. LAMBIE - COUNTY ENGINEER PREPARED BY SURVEY DIVISION I. H. ALEXANDER - DIVISION ENGINEER SURVEYED BY D. L. BURKHOLDER CHECKED BY W. A. EDMONDSON DRAWN BY S. R. BRIONES	ALIGNMENT MAP OF <b>OCEAN VIEW BLVD.</b> FROM <b>HONOLULU AVE.</b> TO <b>FOOTHILL BLVD.</b> BASIS OF BEARINGS CALIFORNIA COORDINATE SYSTEM, ZONE 7		COUNTY SURVEYOR'S MAP NO. <b>B-5096</b> SHEET 1 OF 3 SHEETS FILED: <u>See</u> , 19 <u>20</u> DEPT. SURVEYED SEPT. 1967 - JULY 1968 REFERENCE F. B. 3418 - 8 - 148	REVISION NO. BY DATE
			JOB NUMBER 0087-29	INDEX MAP NO. 51



COUNTY OF LOS ANGELES DEPARTMENT OF COUNTY ENGINEER JOHN A. LAMBIE - COUNTY ENGINEER PREPARED BY SURVEY DIVISION I. H. ALEXANDER - DIVISION ENGINEER SURVEYED BY <u>D. L. BURKHOLDER</u> CHECKED BY <u>W. A. EDMONDSON</u> DRAWN BY <u>S. R. BRIONES</u>	ALIGNMENT MAP OF		COUNTY SURVEYOR'S MAP NO.
	OCEAN VIEW BLVD. FROM HONOLULU AVE. TO FOOTHILL BLVD.		<b>B-5096</b>
	BASIS OF BEARINGS		SHEET 2 OF 3 SHEETS
	CALIFORNIA COORDINATE SYSTEM, ZONE 7		FILED: <u>Sept 19 1967</u>
			SURVEYED: <u>Sept 1967</u>
		REFERENCE	NO. BY DATE
		F. B. 3418 - 8 - 148	
		JOB NUMBER	INDEX MAP NO.
		0037.29	51





SURVEY CONTROL STATION  
LA CRESCENTA 1-11  
Found L.A. Co. Survey Control  
System Monument in hand-  
hole. See F.B. 525-153 & 154.  
F.B. 3418-142.

Found State Division of Highways  
Monument in handhole. See F.B.  
1936-24 & F.B. 3412-24.  
F.B. 3418-74.

Found lead & tack 5" below  
surface. See F.B. 2037-104.  
Set boat spike, washer & tin  
flush with surface. F.B. 3418-73.

Found square head spike, washer  
& tin. See F.B. 3412-23. Removed  
same & found square head spike  
& tin. See F.B. 1346-24. Reset  
square head spike & tin flush  
with surface. F.B. 3418-73.

Found Flood Control Dist. Mon-  
ument 3" below surface. See  
Flood Control Dist. F.B. F.C. 983-  
115.  
F.B. 3418-121.

Found Flood Control Dist. Mon-  
ument 3" below surface. See  
Flood Control Dist. F.B. F.C. 983-  
134.  
F.B. 3418-121.

Found lead & tack. See Flood  
Control Dist. F.B. F.C. 983-115  
& 134.  
F.B. 3418-121.

Set square head spike & tin  
flush with surface. F.B. 3418-121.

Found square head spike, washer  
& tin. See F.B. 3412-20.  
F.B. 3418-128.

Found concrete nail. See  
F.B. 3412-19, F.B. 3418-127  
& 140.

Found Flood Control Dist. Mon-  
ument 8" below surface. See  
Flood Control Dist. F.B. F.C. 984-  
35, F.C. 983-95, 123 & Tract M.B.  
1250, M.B. 283-41. Set handhole  
over same. F.B. 3418-120.

Found Flood Control Dist. Mon-  
ument 14" below surface. See  
Flood Control Dist. F.B. F.C. 984-  
132 & Tract M.B. 13550, M.B.  
283-41. F.B. 3418-119.

Found square head spike & tin.  
See F.B. 3412-19. Removed same  
& found boat spike, washer &  
tin. 2" below surface. Removed  
same & found cut spike & washer  
4" below surface. See F.B. 524-  
192. Set square head spike & tin  
flush with surface. F.B. 3418-  
127 & 140.

Set square head spike & tin by  
intersection flush with surface.  
F.B. 3418-142.

Set square head spike & tin by  
flush with surface. F.B. 3418-126.

Found spike & washer. See F.B.  
Dapt. F.B. 3418-108. F.B. 3418-120.

Found square head spike. See  
Tract M.B. 1515-20, M.B. 283-41 &  
Tract M.B. 1515-15, M.B. 345-44.  
F.B. 3418-120.

Set boat spike, washer & tin by  
intersection. F.B. 3418-120.

Found 2" iron pipe, one plug &  
top marked. "R.L. 1682." See  
Tract M.B. 1515-15, M.B. 345-44.  
F.B. 3418-120.

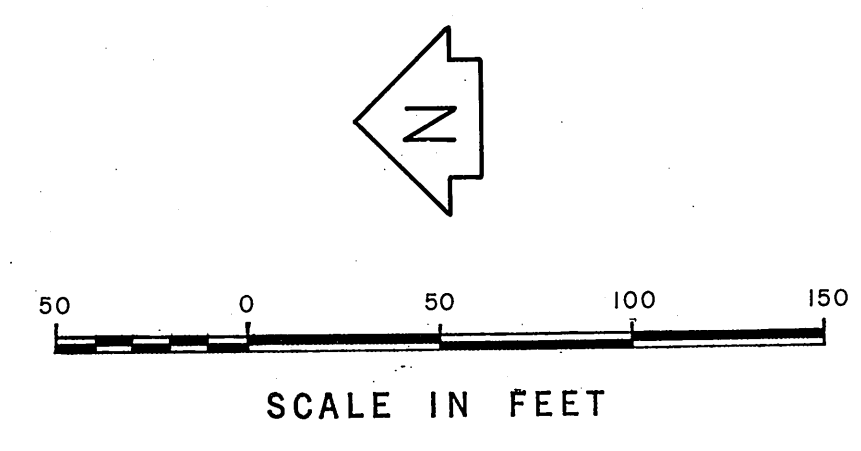
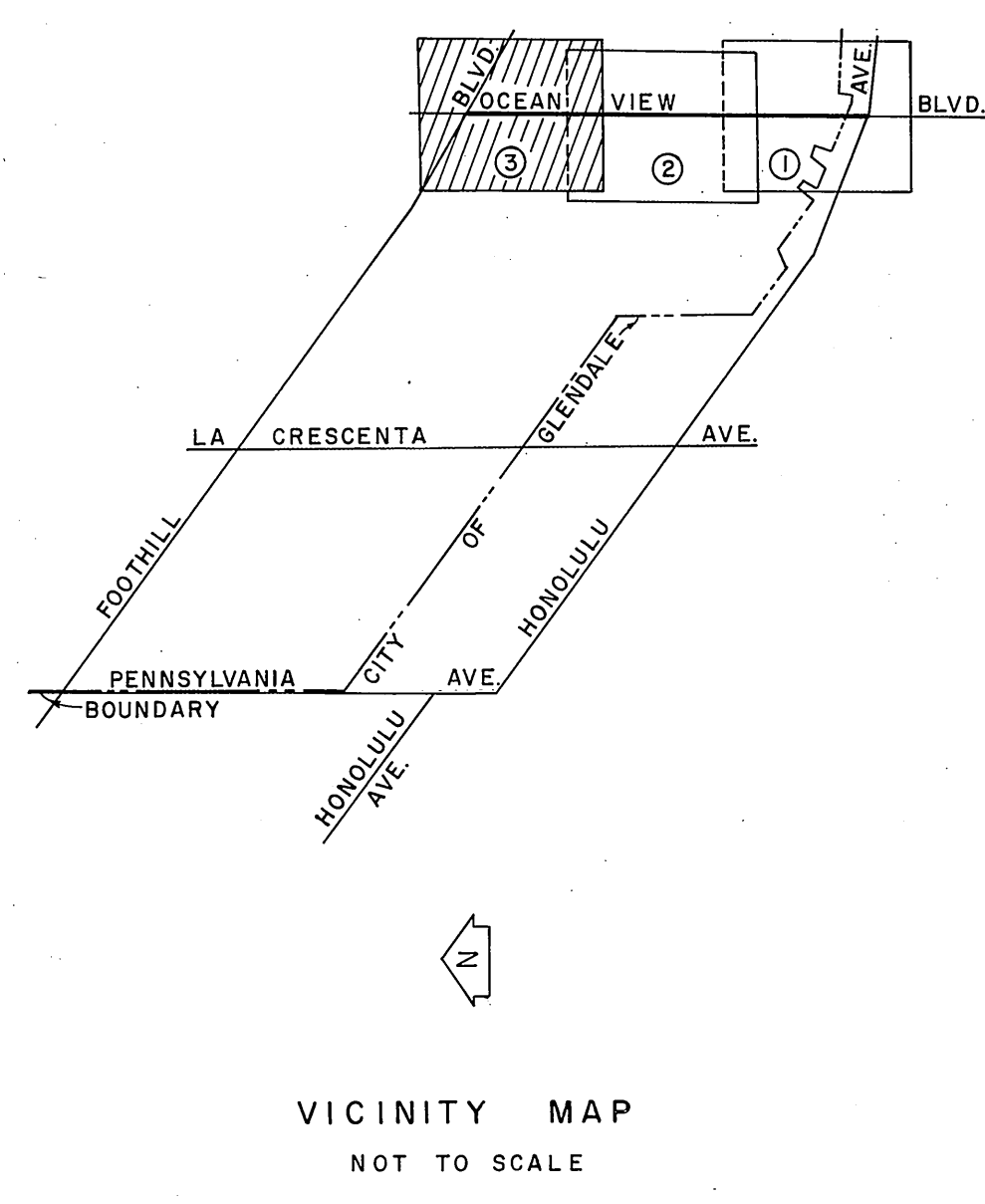
Set square head spike & tin  
flush with surface. F.B. 3418-119.

Found square head spike, washer &  
tin. See F.B. 1336-21 & F.B. 3412-18.  
Removed same & found spike with  
cut cross 4" below surface. See  
F.B. 524-191. Set boat spike, washer  
& tin flush with surface. F.B. 3418-136.

Set boat spike, washer  
& tin. F.B. 3418-136.

Found square head spike,  
washer & tin. See F.B. 1336-  
21 & F.B. 3412-17.  
F.B. 3418-135.

SURVEY CONTROL STATION  
LA CRESCENTA 1-10A  
Found L.A. Co. Survey Control  
System Monument in hand-  
hole. See F.B. 525-151 & 152.  
F.B. 3418-141.



COUNTY OF LOS ANGELES DEPARTMENT OF COUNTY ENGINEER JOHN A. LAMBIE - COUNTY ENGINEER PREPARED BY SURVEY DIVISION I. H. ALEXANDER - DIVISION ENGINEER SURVEYED BY <u>D. L. BURKHOLDER</u> CHECKED BY <u>W. A. EDMONDSON</u> DRAWN BY <u>S. R. BRIONES</u>	ALIGNMENT MAP OF <b>OCEAN VIEW BLVD.</b> FROM <b>HONOLULU AVE.</b> TO <b>FOOTHILL BLVD.</b> BASIS OF BEARINGS CALIFORNIA COORDINATE SYSTEM, ZONE 7		COUNTY SURVEYOR'S MAP NO. <b>B-5096</b> SHEET 3 OF 3 SHEETS FILED: _____ 1977 <u>John A. Lambie</u> DEPUTY SEPT. 1967 - JULY 1968 REFERENCE F. B. 3418 - 8 - 148 JOB NUMBER 0097.29 INDEX MAP NO. 51	REVISION NO. BY DATE