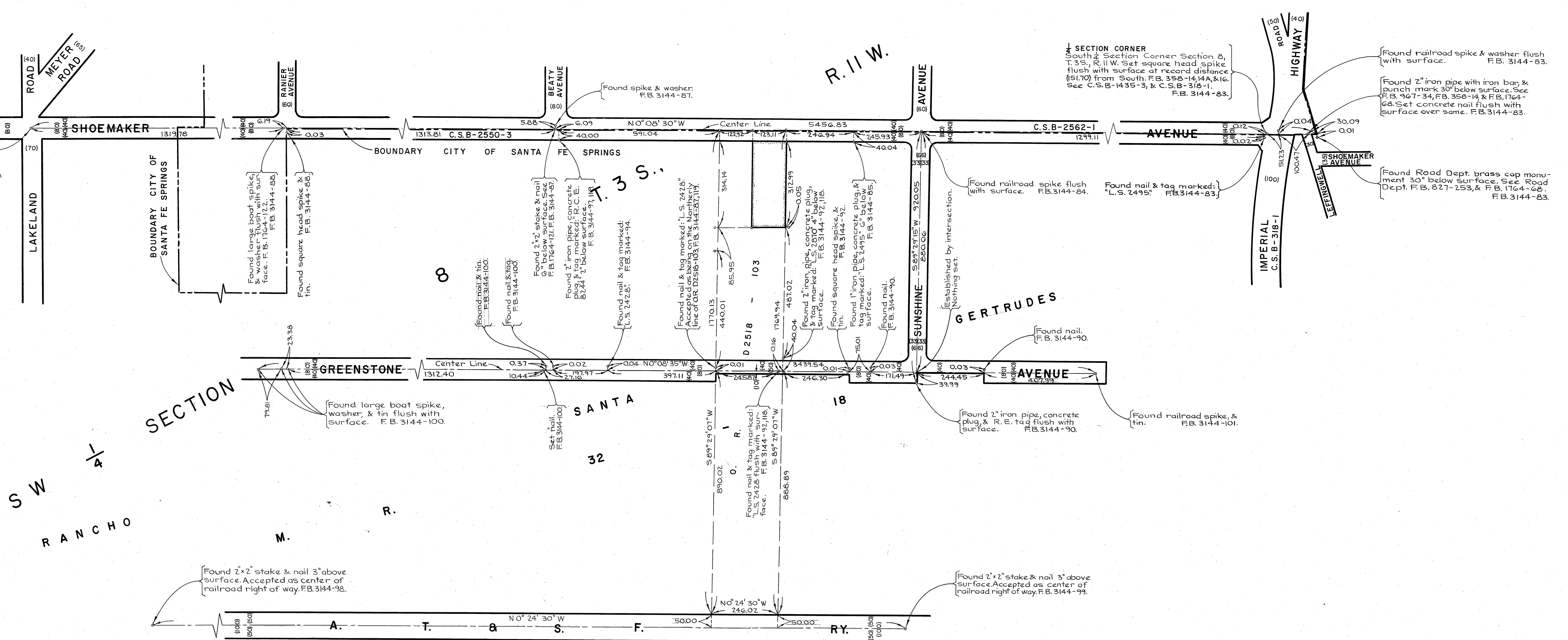
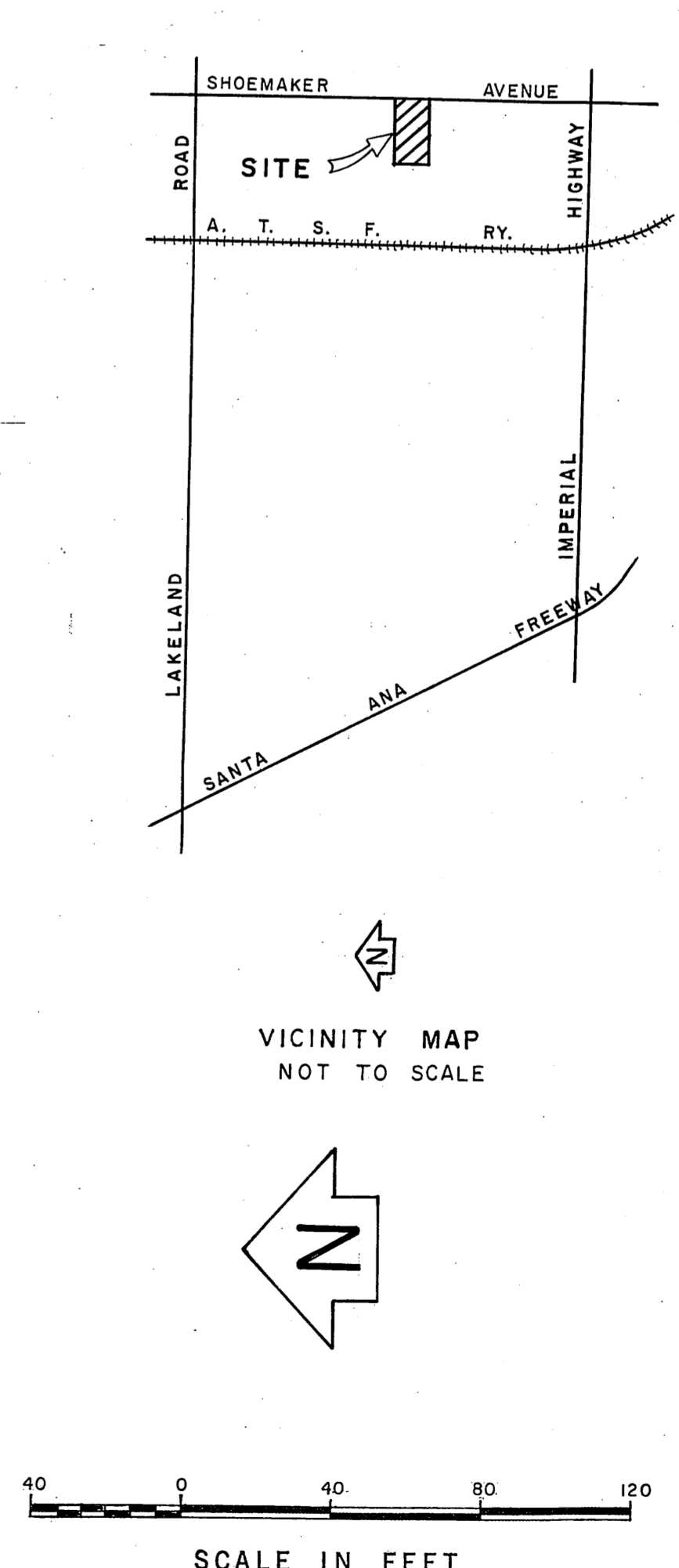
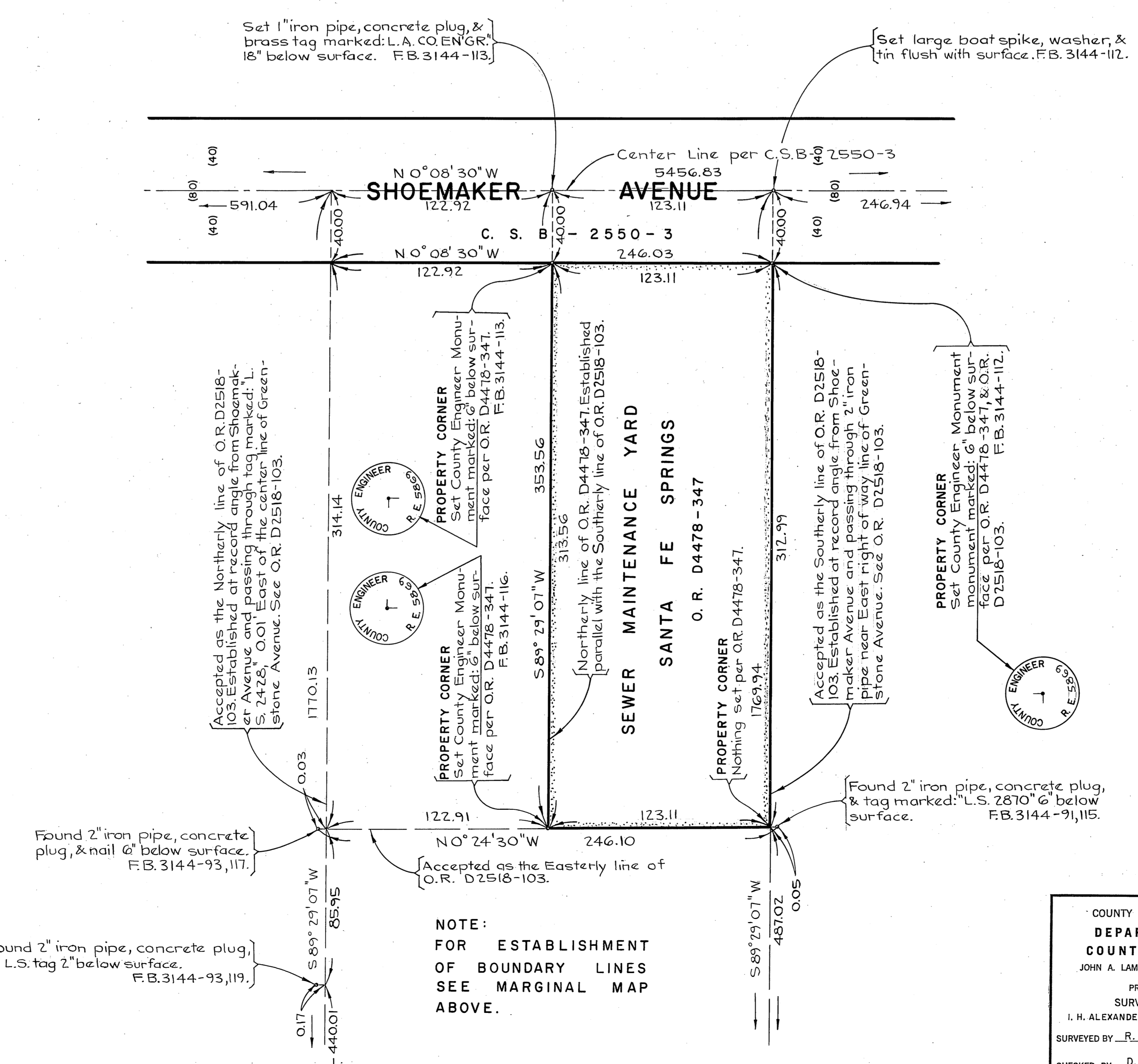


CENTER OF SECTION
South of Shoemaker Monument marked in Handbook, See
F.B. 1764-85 & F.B. 3144-89



SECTION
SW 1/4
RANCHO

MARGINAL MAP
SCALE 1"=150'



NOTE:
FOR ESTABLISHMENT
OF BOUNDARY LINES
SEE MARGINAL MAP
ABOVE.

COUNTY OF LOS ANGELES DEPARTMENT OF COUNTY ENGINEER JOHN A. LAMBIE - COUNTY ENGINEER PREPARED BY SURVEY DIVISION I. H. ALEXANDER - DIVISION ENGINEER SURVEYED BY R. B. HOBBS CHECKED BY D. SAPPPELL DRAWN BY R. R. SHEAN	BOUNDARY MAP OF SEWER MAINTENANCE YARD SANTA FE SPRINGS FOR TOPOGRAPHY SEE SURVEY DIVISION FILE MAP NO. P.T. 448 BASIS OF BEARINGS THE CENTER LINE OF SHOEMAKER AVENUE (N 0° 08' 30" W) AS SHOWN ON C. S. B - 2550-3.		COUNTY SURVEYOR'S MAP NO. B-5097 SHEET 1 OF 1 SHEET FILED: <i>Map</i> , 19 20 <i>See W. Alexander</i> DEPUTY SURVEYED OCT. 8 DEC. 1969 REFERENCE F. B. 3144-81-122 JOB NUMBER 0570.00 INDEX MAP NO. 33	REVISION NO. BY DATE
	FOUND RAILROAD SPIKE & WASHER FLUSH WITH SURFACE. F.B. 3144-83. FOUND 2" IRON PIPE WITH IRON BAR & PUNCH MARK 30" BELOW SURFACE. SEE F.B. 907-34, F.B. 358-14 & F.B. 1764-68. SET CONCRETE NAIL FLUSH WITH SURFACE OVER SAME. F.B. 3144-83. FOUND ROAD DEPT. BRASS CAP MONUMENT 30" BELOW SURFACE. SEE ROAD DEPT. F.B. 821-253 & F.B. 1764-68. F.B. 3144-83.			