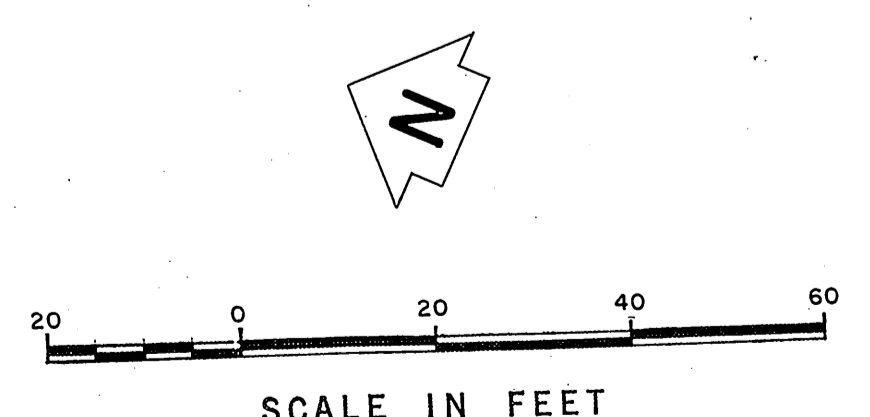
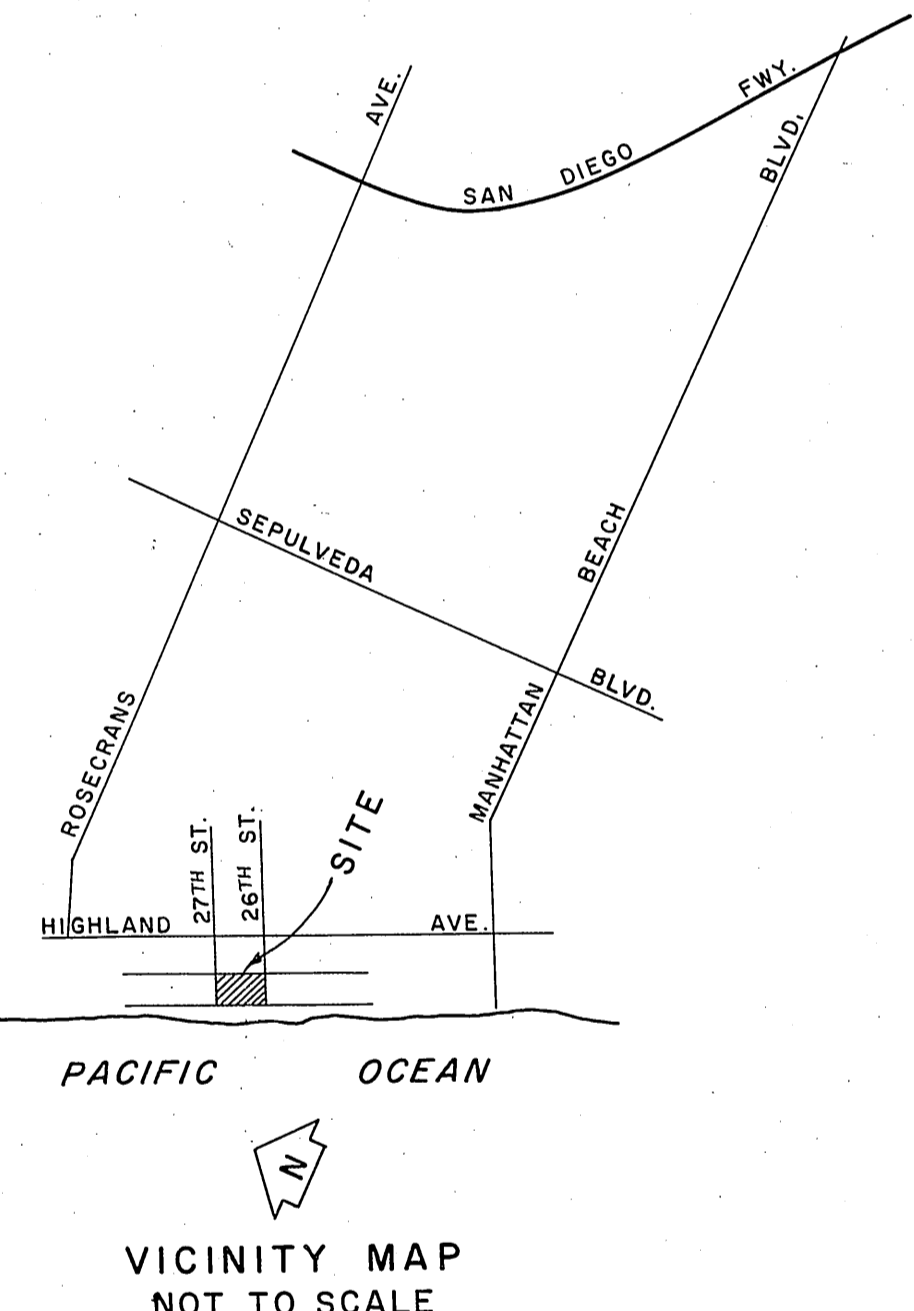
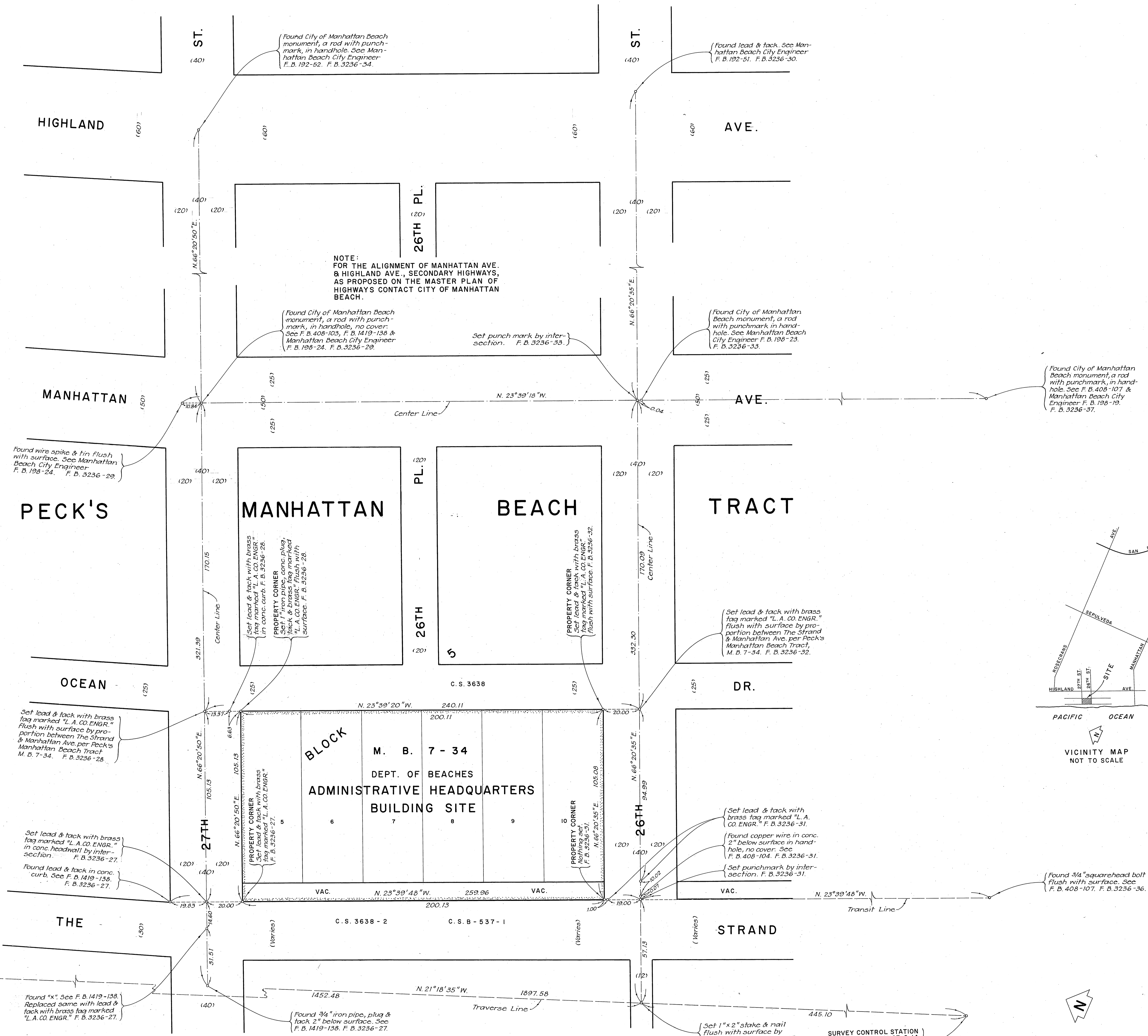


C.2.B-2101



SURVEY CONTROL STATION
TORRANCE B-1
Found L. A. Co. Survey Control
System Monument. See
F. B. 925-35. F. B. 3236-35.

Found "x". See F. B. 1419-138.
Replaced same with lead &
fack with brass tag marked
"L. A. CO. ENGR." F. B. 3236-27.

Found 3/4" iron pipe, plug &
fack 2" below surface. See
F. B. 1419-138. F. B. 3236-27.

Set 1" x 2" stake & nail
flush with surface by
intersection. F. B. 3236-35.

SURVEY CONTROL STATION
TORRANCE C-1A
Found L. A. Co. Survey Control
System Monument. See
F. B. 925-33. F. B. 3236-35.

COUNTY OF LOS ANGELES
DEPARTMENT OF
COUNTY ENGINEER
JOHN A. LAMBIE - COUNTY ENGINEER
PREPARED BY
SURVEY DIVISION
I. H. ALEXANDER - DIVISION ENGINEER
SURVEYED BY E. F. ENGLISH
CHECKED BY S. D. BAILEY
DRAWN BY M. HAMASU

BOUNDARY MAP OF
DEPARTMENT OF BEACHES
ADMINISTRATIVE HEADQUARTERS
BUILDING SITE
CITY OF MANHATTAN BEACH
FOR TOPOGRAPHY SEE SURVEY
DIVISION FILE MAP NO. P. T. 456.
BASIS OF BEARINGS
CALIFORNIA COORDINATE SYSTEM, ZONE 7

| | | |
|--|-------------------|-------------|
| COUNTY SURVEYOR'S MAP NO. B-5101 | | REVISION |
| SHEET 1 OF 1 SHEET | | NO. BY DATE |
| FILED: May 29, 1970 | | |
| SURVEYED: MAR. 1970 | | |
| REFERENCE: F. B. 3236-25-37 | | |
| JOB NUMBER: 0018.30 | INDEX MAP NO.: 25 | |

C.2.B-2101