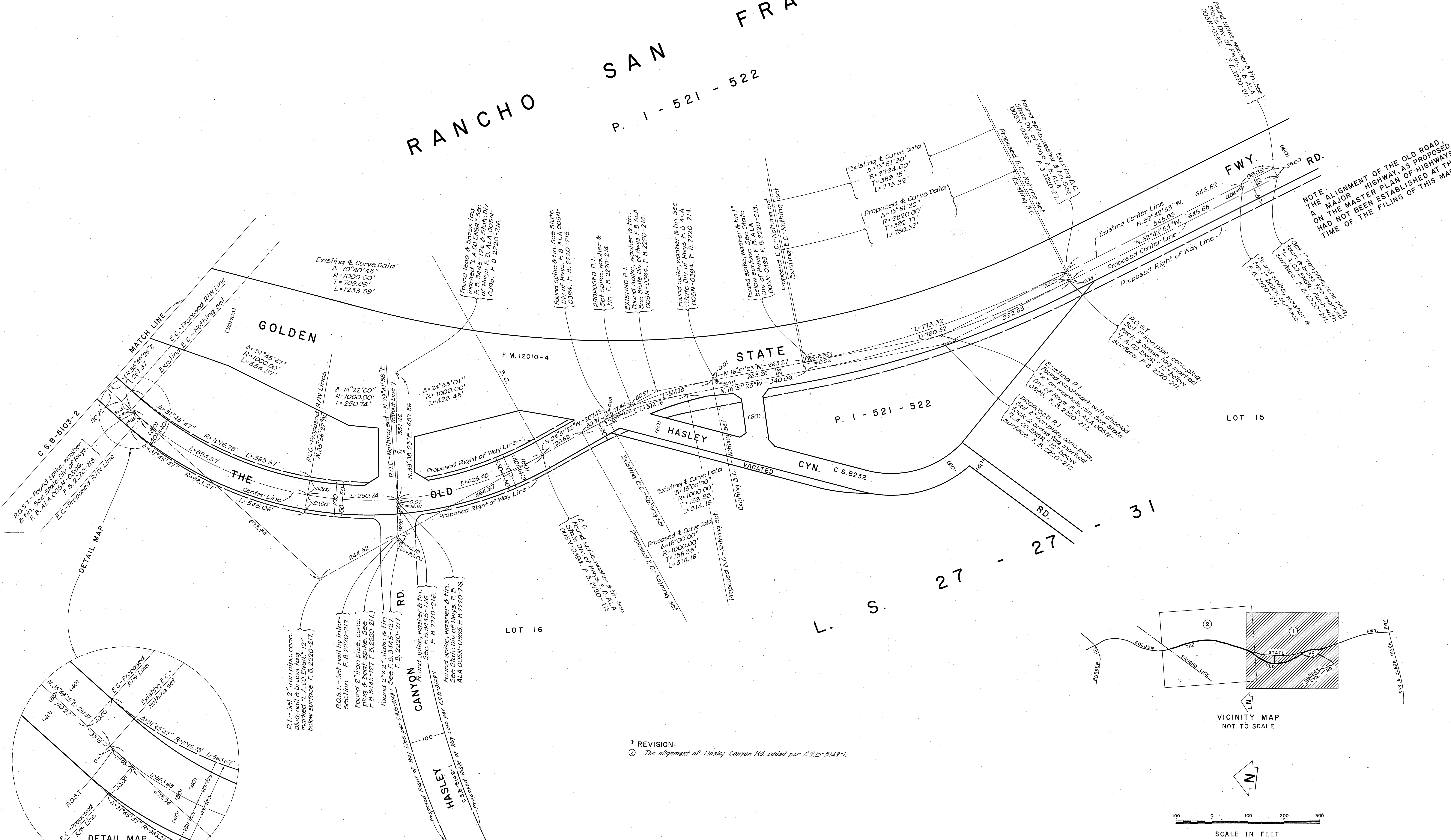
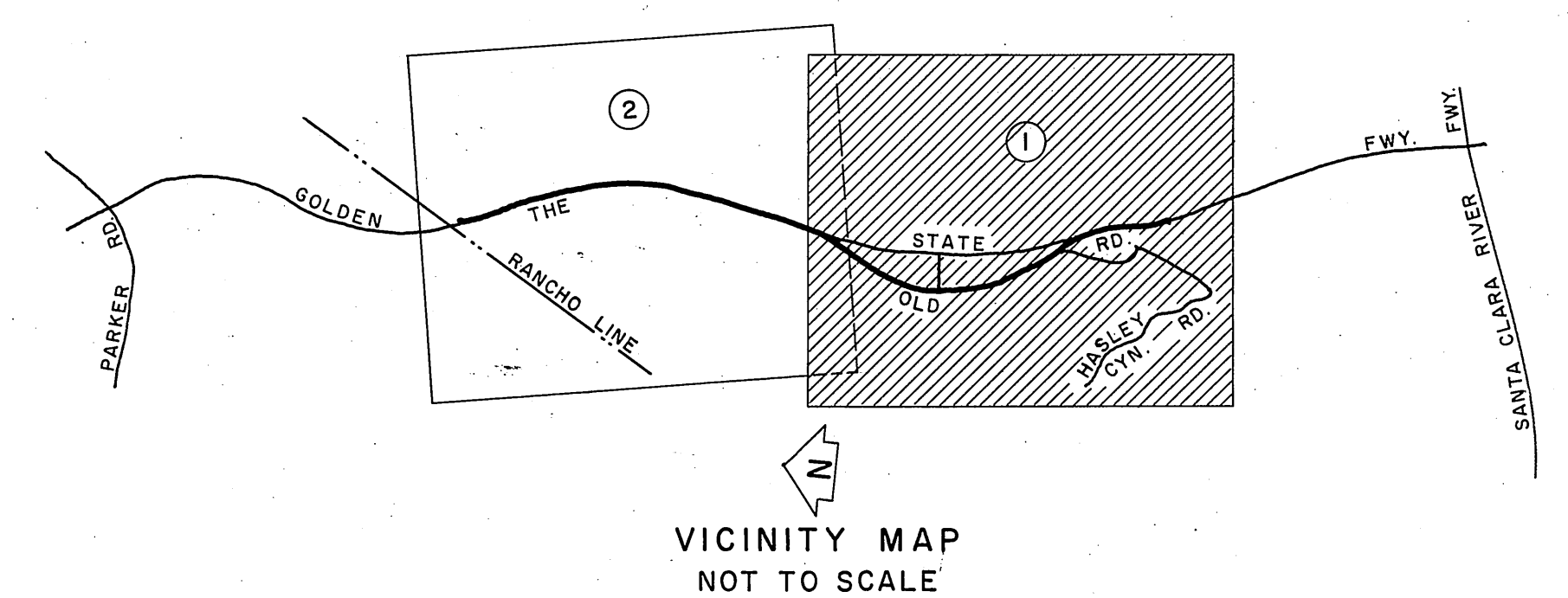
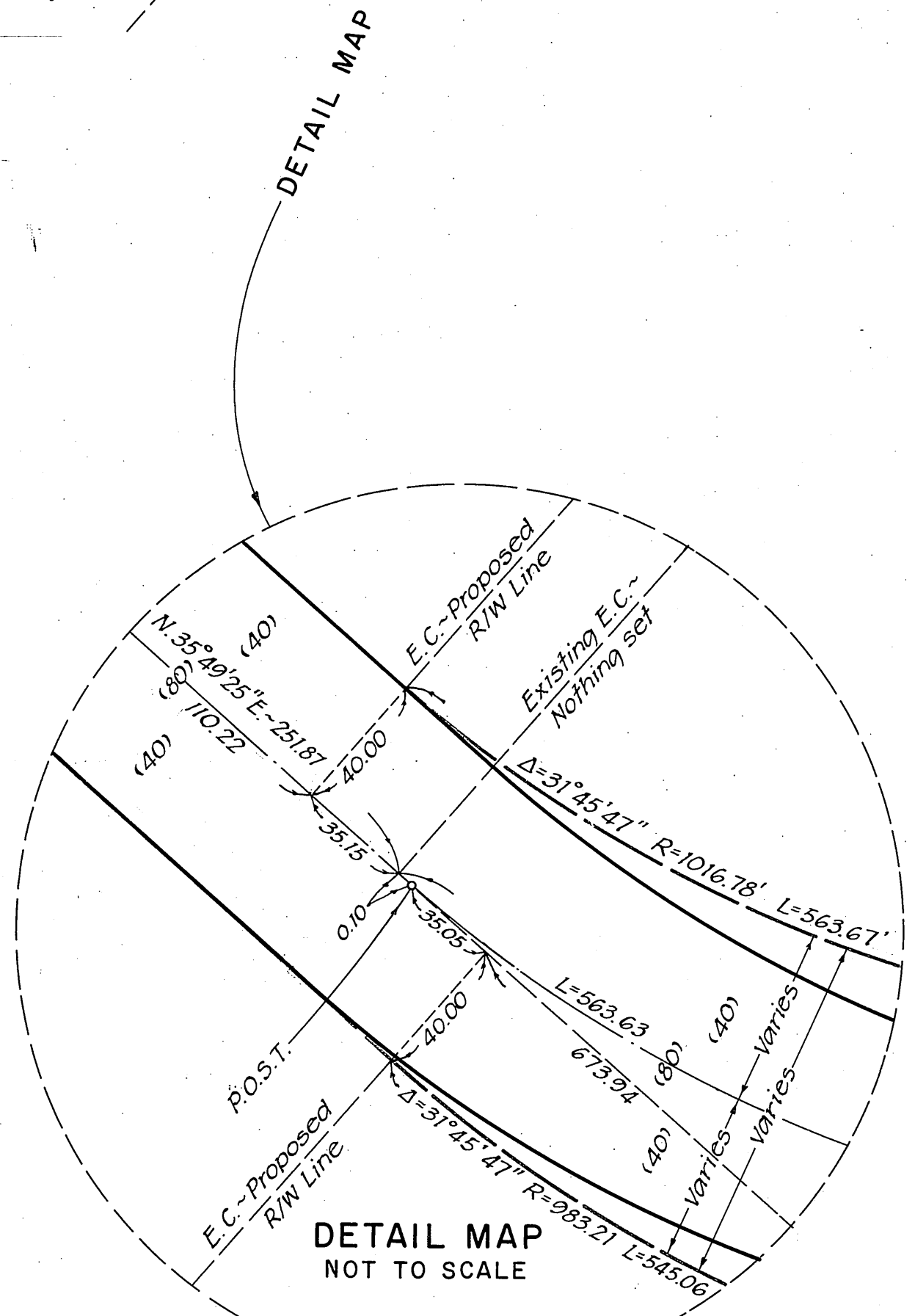


# RANCHO SAN FRANCISCO

P. 1 - 521 - 522



NOTE:  
 THE ALIGNMENT OF THE OLD ROAD,  
 A MAJOR HIGHWAY, AS PROPOSED  
 ON THE MASTER PLAN OF HIGHWAYS  
 HAD NOT BEEN ESTABLISHED AT THE  
 TIME OF THE FILING OF THIS MAP.



\* REVISION:  
 ① The alignment of Hasley Canyon Rd. added per C.S.B-5149-1.

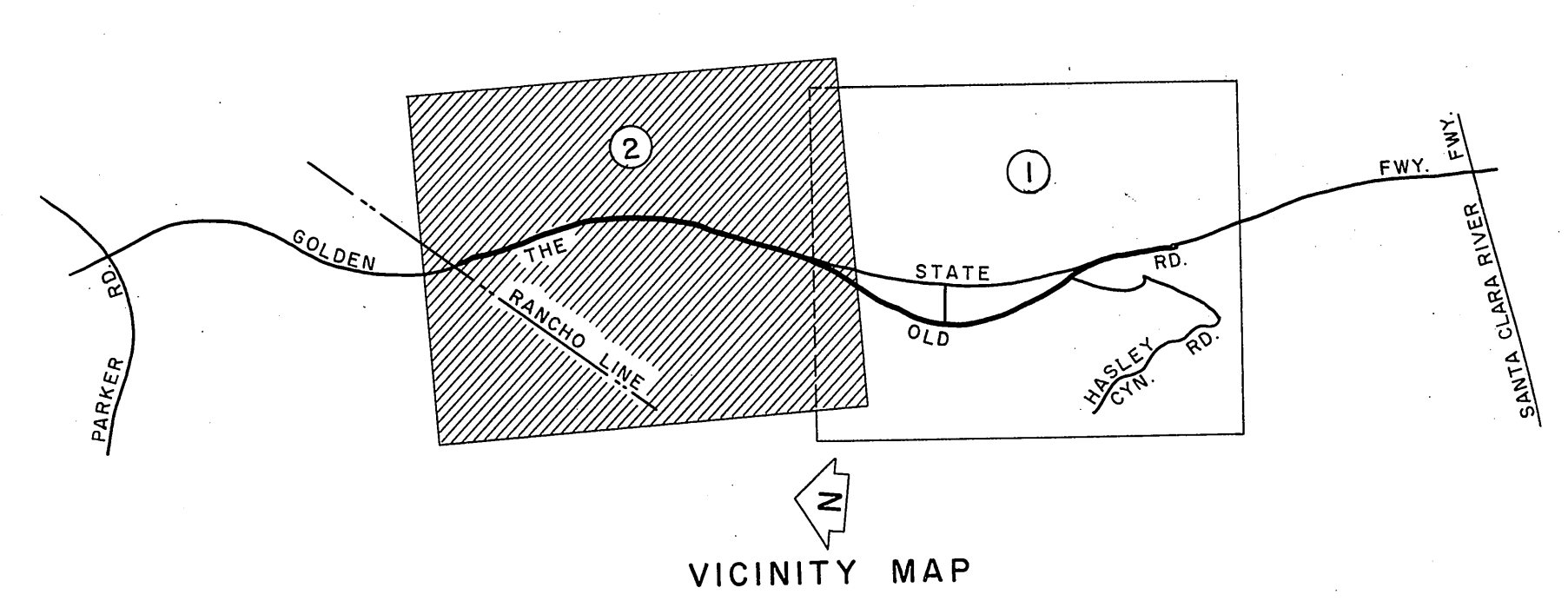
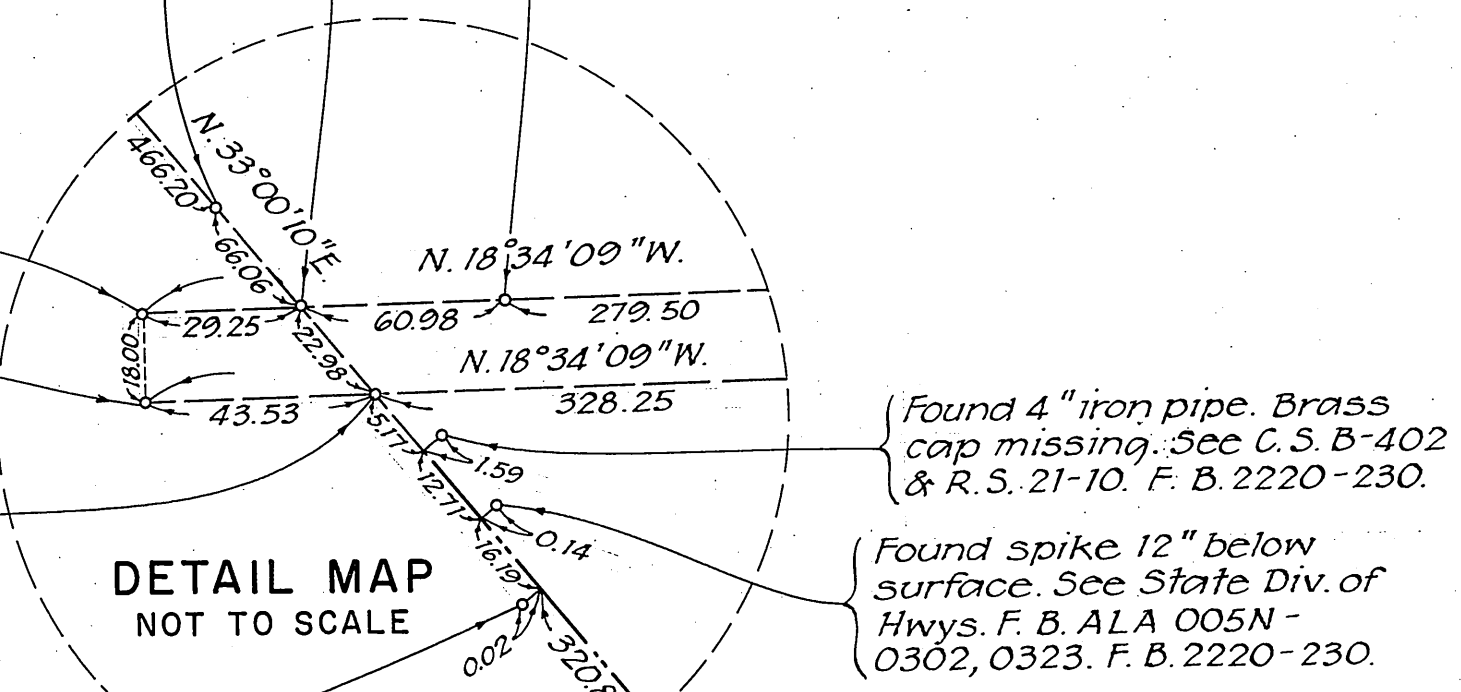
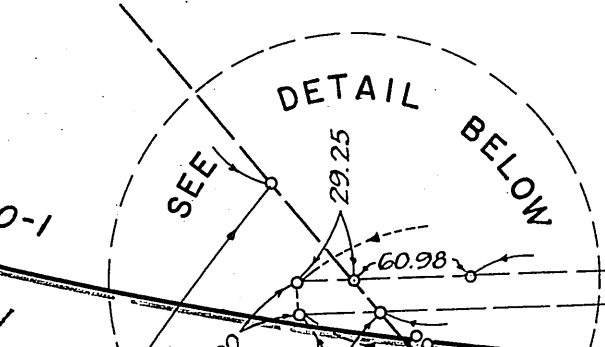
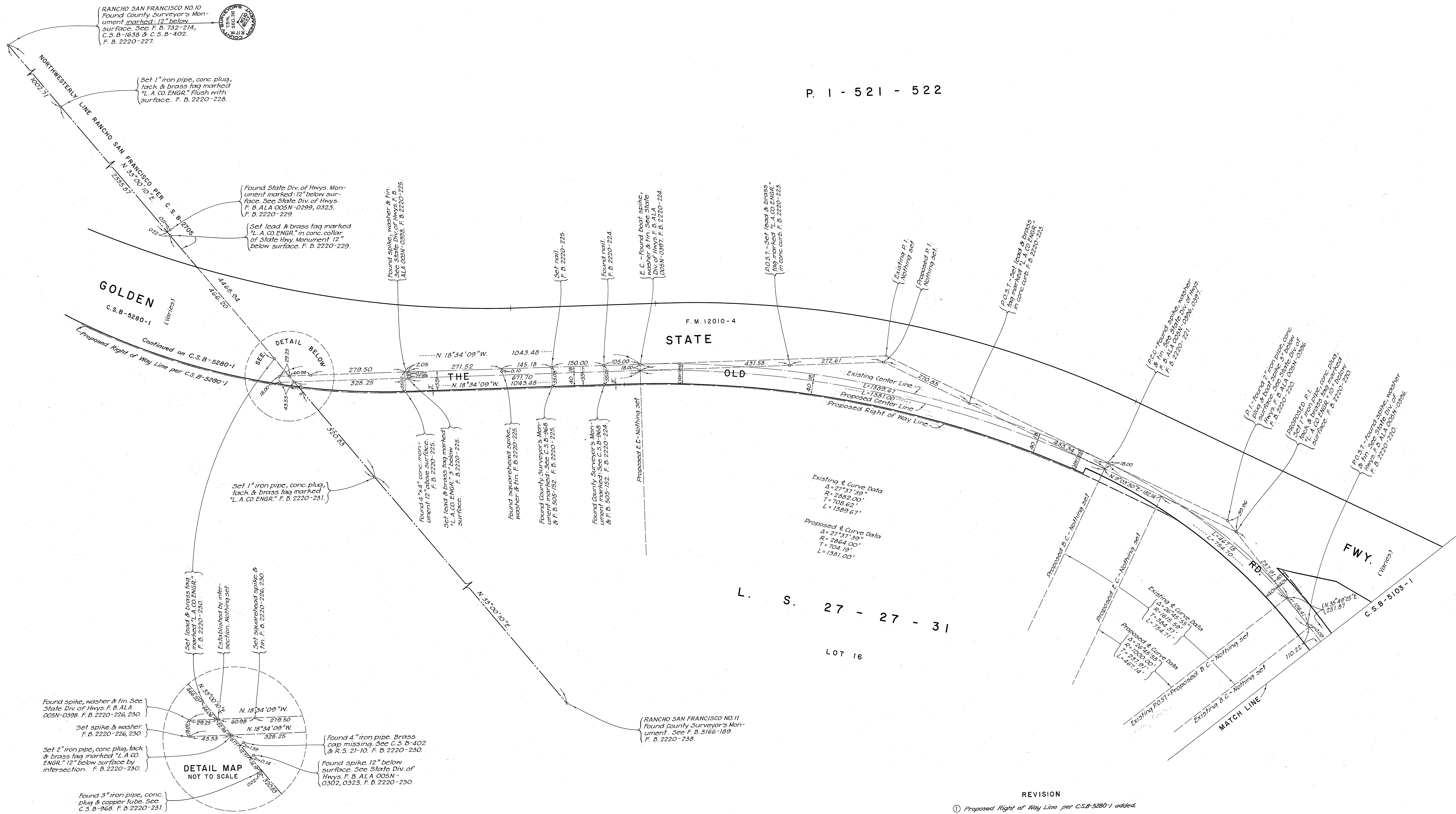
SCALE IN FEET

COUNTY OF LOS ANGELES DEPARTMENT OF COUNTY ENGINEER JOHN A. LAMBIE - COUNTY ENGINEER PREPARED BY SURVEY DIVISION I. H. ALEXANDER - DIVISION ENGINEER SURVEYED BY R. C. DALE CHECKED BY A. E. DART DRAWN BY M. HAMASU	ALIGNMENT MAP OF <b>THE OLD ROAD</b> FROM N'LY OF SANTA CLARA RIVER FWY. TO THE N'LY LINE RANCHO SAN FRANCISCO		COUNTY SURVEYOR'S MAP NO. <b>B-5103</b>	REVISION NO. BY DATE ① S.R.B. 2-17-72
	SHEET 1 OF 2 SHEETS FILED: <u>July 2, 1969</u> DEPT. <u>San Francisco</u> SURVEYED NOV. 1969		REFERENCE F. B. 2220-210-238	JOB NUMBER 0096-62
	BASIS OF BEARINGS THE BEARING OF THE N'LY LINE OF RANCHO SAN FRANCISCO (N.33°00'10"E.) PER C.S.B-2705.		INDEX MAP NO. 264-387 278-387	

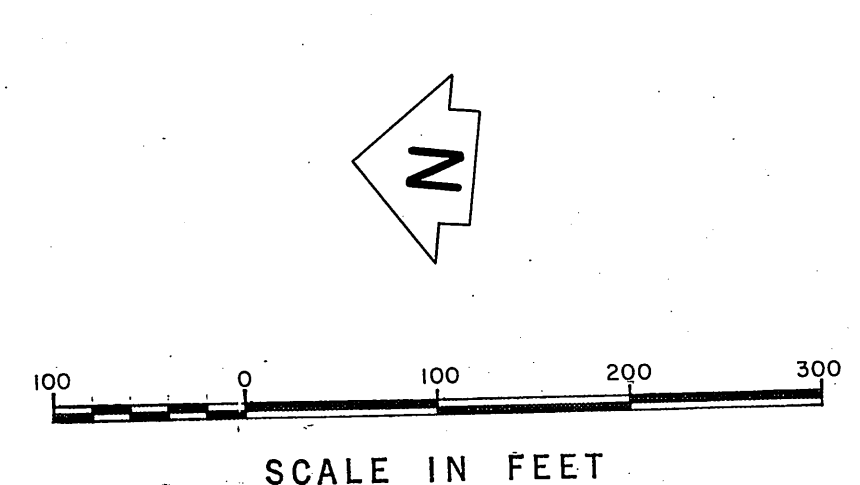
C 2 B - 2103 - 5

# RANCHO SAN FRANCISCO

P. 1 - 521 - 522



REVISION  
 ① Proposed Right of Way Line per C.S.B-5280-1 added.



COUNTY OF LOS ANGELES DEPARTMENT OF COUNTY ENGINEER JOHN A. LAMBIE - COUNTY ENGINEER PREPARED BY SURVEY DIVISION I. H. ALEXANDER - DIVISION ENGINEER SURVEYED BY <u>R. C. DALE</u> CHECKED BY <u>A. F. DART</u> DRAWN BY <u>M. HAMASU</u>	<b>ALIGNMENT MAP OF</b> <b>THE OLD ROAD</b> FROM N'LY OF SANTA CLARA RIVER FWY. TO <b>THE NW'LY LINE RANCHO SAN FRANCISCO</b>		COUNTY SURVEYOR'S MAP NO. <b>B-5103</b> SHEET 2 OF 2 SHEETS FILED: <u>June 8, 1970</u> <u>John A. Lambie</u> COUNTY ENGINEER NOV. 1969 REFERENCE F. B. 2220-210-238	REVISION NO. BY DATE ① J.F.M. 6-8-77
	BASIS OF BEARINGS THE BEARING OF THE NW'LY LINE OF RANCHO SAN FRANCISCO (N. 33°00'10"E.) PER C.S.B-2705.			JOB NUMBER 0096.62
				INDEX MAP NO. 284-037 279-037

C 2 B - 2103 - 5