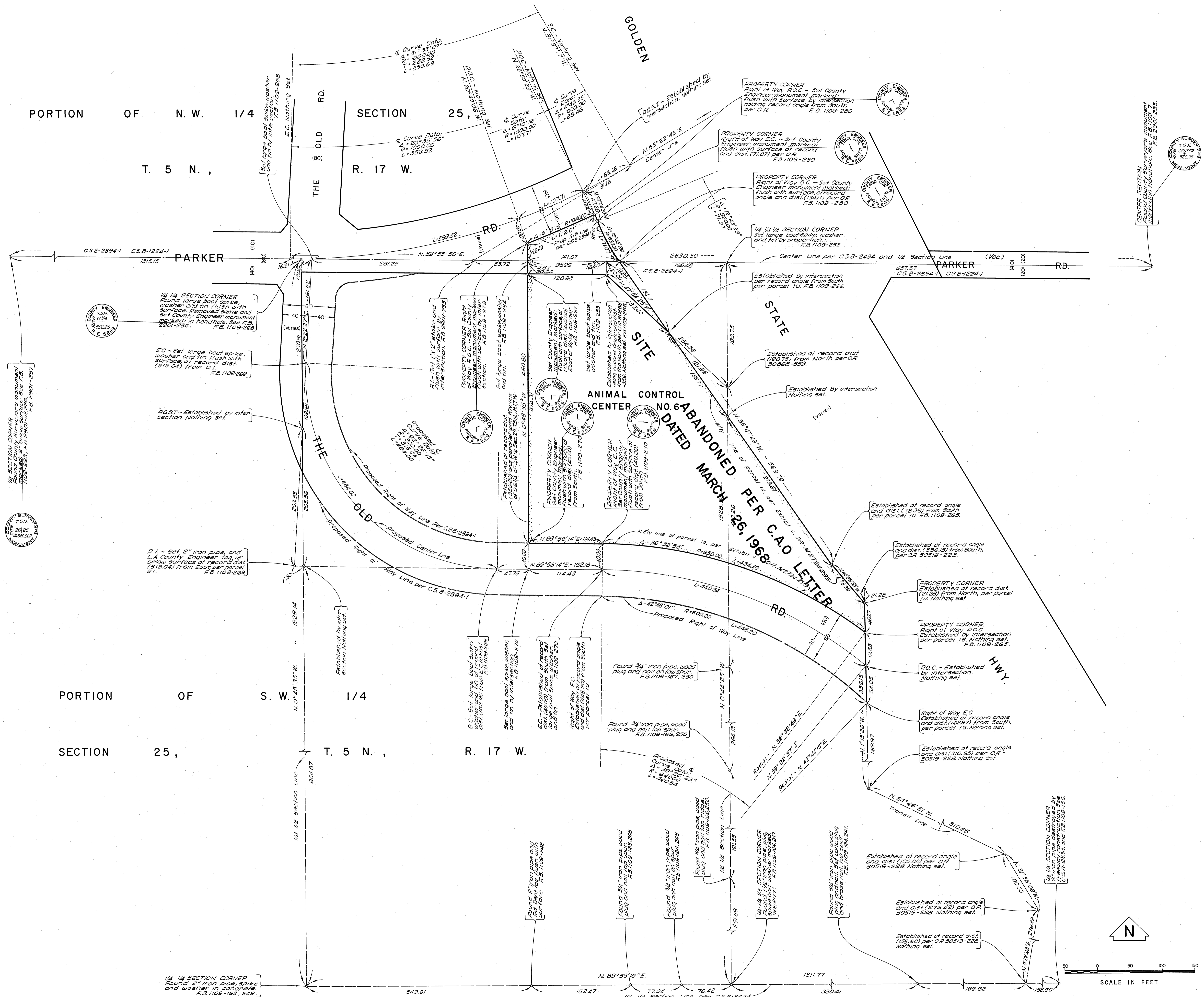


PORTION OF N.W. 1/4 SECTION 25, T. 5 N., R. 17 W.

PORTION OF S.W. 1/4 SECTION 25, T. 5 N., R. 17 W.



COUNTY OF LOS ANGELES DEPARTMENT OF COUNTY ENGINEER JOHN A. LAMBIE, COUNTY ENGINEER PREPARED BY SURVEY DIVISION L.H. ALEXANDER, DIVISION ENGINEER SURVEYED BY J.P. MENNE CHECKED BY A.E. DART DRAWN BY R. MANOR - S. KURACHI	BOUNDARY MAP OF ANIMAL CONTROL CENTER NO. 6 CASTAIC FOR TOPOGRAPHY SEE SURVEY DIVISION FILE MAP PT - 400		COUNTY SURVEYOR'S MAP NO. B-5108 SHEET 1 OF 1 SHEET FILED: <i>Hay</i> 19 22 DEPUTY SURVEYED NOV., 1967 REFERENCE F.B. 1109 F.B. 2901 JOB NUMBER 0056.06	REVISION NO. BY DATE _____ _____ _____
	BASIS OF BEARINGS THE BEARING OF PARKER ROAD (N. 89° 55' 50" E.) AS SHOWN ON C.S.B - 2434.			
	SCALE IN FEET 0 50 100 150			
	VICINITY MAP NOT TO SCALE			