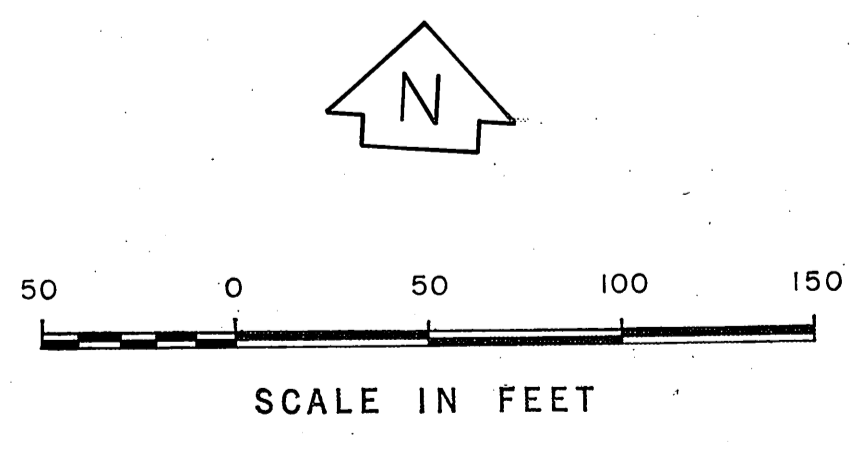
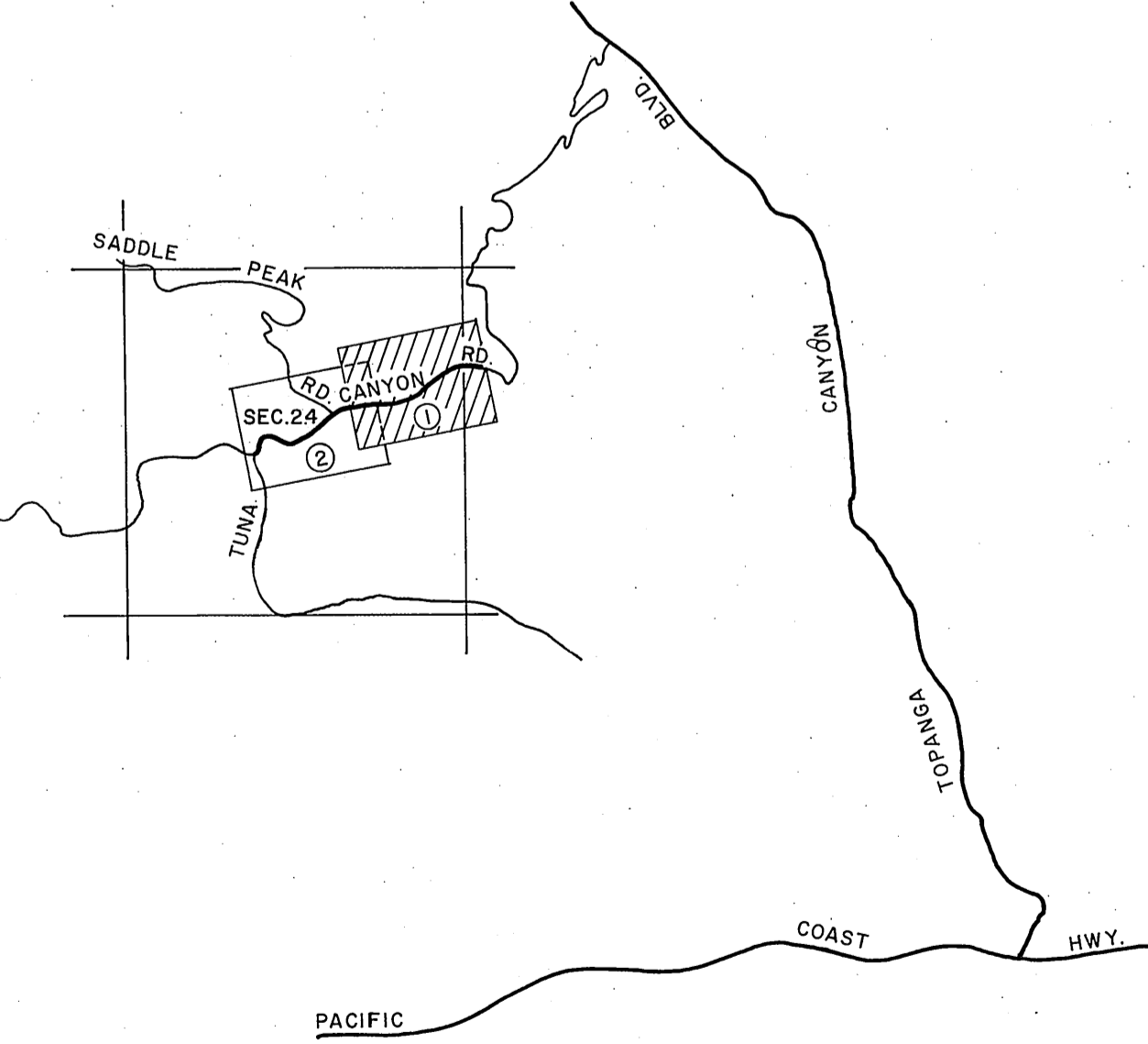
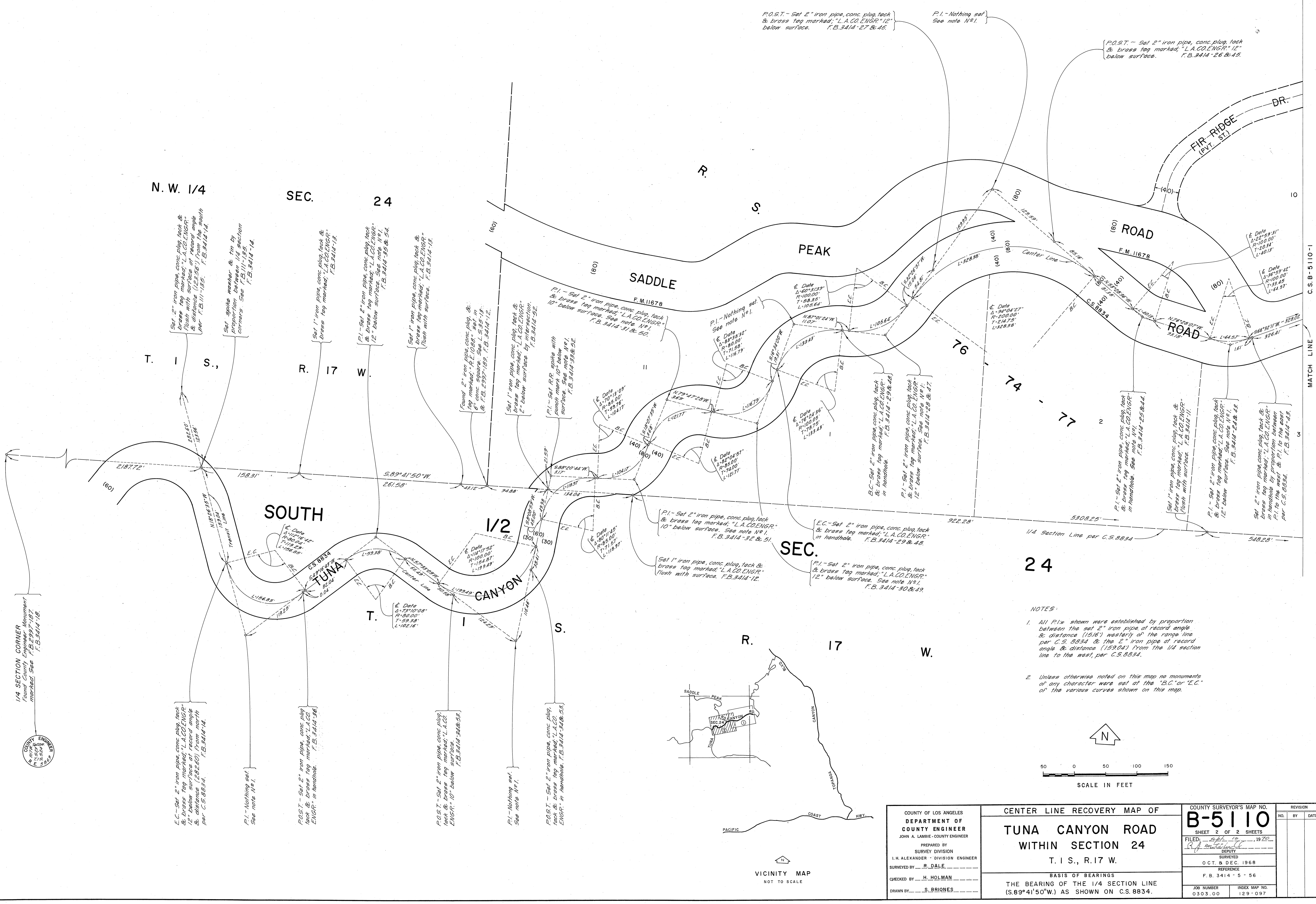


NOTES:

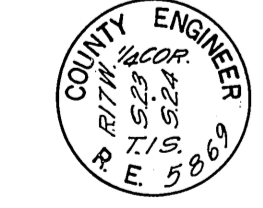
- All P.I.s shown were established by proportion between the set 2" iron pipe at record angle & distance (1516) westerly of the range line per C.S. 8834 & the 2" iron pipe at record angle & distance (1330) from the 1/4 section line to the west, per C.S. 8834.
- Unless otherwise noted on this map, no monuments of any character were set at the "B.C." or "E.C." of the various curves shown on this map.



COUNTY OF LOS ANGELES DEPARTMENT OF COUNTY ENGINEER JOHN A. LAMBLE - COUNTY ENGINEER PREPARED BY SURVEY DIVISION I. H. ALEXANDER - DIVISION ENGINEER SURVEYED BY <u>R. DALE</u> CHECKED BY <u>H. HOLMAN</u> DRAWN BY <u>S. BRIONES</u>	CENTER LINE RECOVERY MAP OF <b>TUNA CANYON ROAD</b> WITHIN SECTION 24 T. 1 S., R. 17 W.		COUNTY SURVEYOR'S MAP NO. <b>B-5110</b>	REVISION NO. BY DATE
	BASIS OF BEARINGS THE BEARING OF THE 1/4 SECTION LINE (S. 89° 41' 50" W.) AS SHOWN ON C.S. 8834.		SHEET 1 OF 2 SHEETS FILED: <u>Feb 19 1970</u> <u>R. J. WILSON</u> DEPUTY	
			SURVEYED 8 DEC. 1968 REFERENCE F. B. 3414 - 5 - 56	
			JOB NUMBER 0303 00	INDEX MAP NO. 129 - 097



1/4 SECTION CORNER  
 Found County Engineer  
 monument. See F.B. 3414-18.



E.C. - Set 2" iron pipe, conc. plug, tack & brass tag marked "L.A. CO. ENGR." & distance (122.80) record angle per C.S. 8834. F.B. 3414-14.

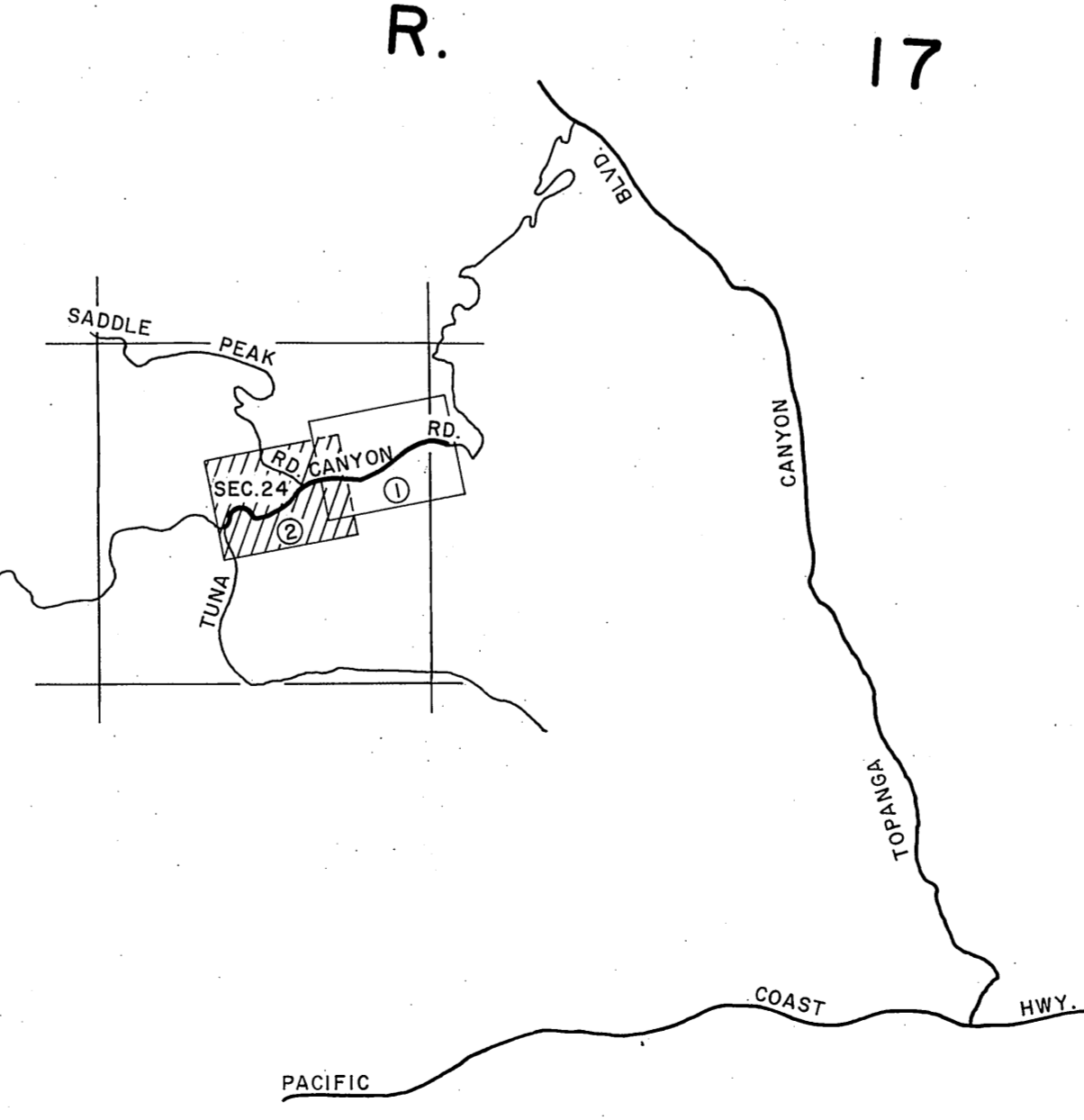
P.I. - Nothing set. See note No. 1.

POST - Set 2" iron pipe, conc. plug, tack & brass tag marked "L.A. CO. ENGR." in handhole. F.B. 3414-36.

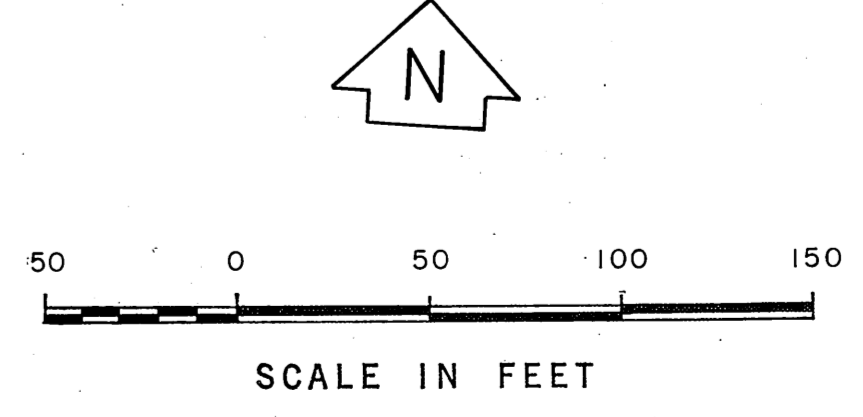
P.O.S.T. - Set 2" iron pipe, conc. plug, tack & brass tag marked "L.A. CO. ENGR." 10' below surface. F.B. 3414-24 & 25.

P.I. - Nothing set. See note No. 1.

P.O.S.T. - Set 2" iron pipe, conc. plug, tack & brass tag marked "L.A. CO. ENGR." in handhole. F.B. 3414-32 & 33.



NOTES:  
 1. All P.I.s shown were established by proportion between the set 2" iron pipe of record angle & distance (1516') westerly of the range line per C.S. 8834 & the 2" iron pipe at record angle & distance (1590') from the 1/4 section line to the west, per C.S. 8834.  
 2. Unless otherwise noted on this map no monuments of any character were set of the "E.C." or "E.C." of the various curves shown on this map.



COUNTY OF LOS ANGELES DEPARTMENT OF COUNTY ENGINEER JOHN A. LAUBIE - COUNTY ENGINEER PREPARED BY SURVEY DIVISION I. H. ALEXANDER - DIVISION ENGINEER SURVEYED BY R. DALE CHECKED BY H. HOLMAN DRAWN BY S. BRIONES	CENTER LINE RECOVERY MAP OF <b>TUNA CANYON ROAD</b> WITHIN SECTION 24 T. 1 S., R. 17 W.		COUNTY SURVEYOR'S MAP NO. <b>B-5110</b> SHEET 2 OF 2 SHEETS FILED: <i>Sept 10</i> , 192 <i>2</i> <i>R. J. [Signature]</i> SURVEYED OCT. & DEC. 1968 REFERENCE F. B. 3414-5-56	REVISION NO. BY DATE
	THE BEARING OF THE 1/4 SECTION LINE (S. 89° 41' 50" W.) AS SHOWN ON C.S. 8834.			JOB NUMBER 0303.00 INDEX MAP NO. 129-097
	BASIS OF BEARINGS			
	BASIS OF BEARINGS			
	BASIS OF BEARINGS			

MATCH LINE  
 C.S.B-5110-1