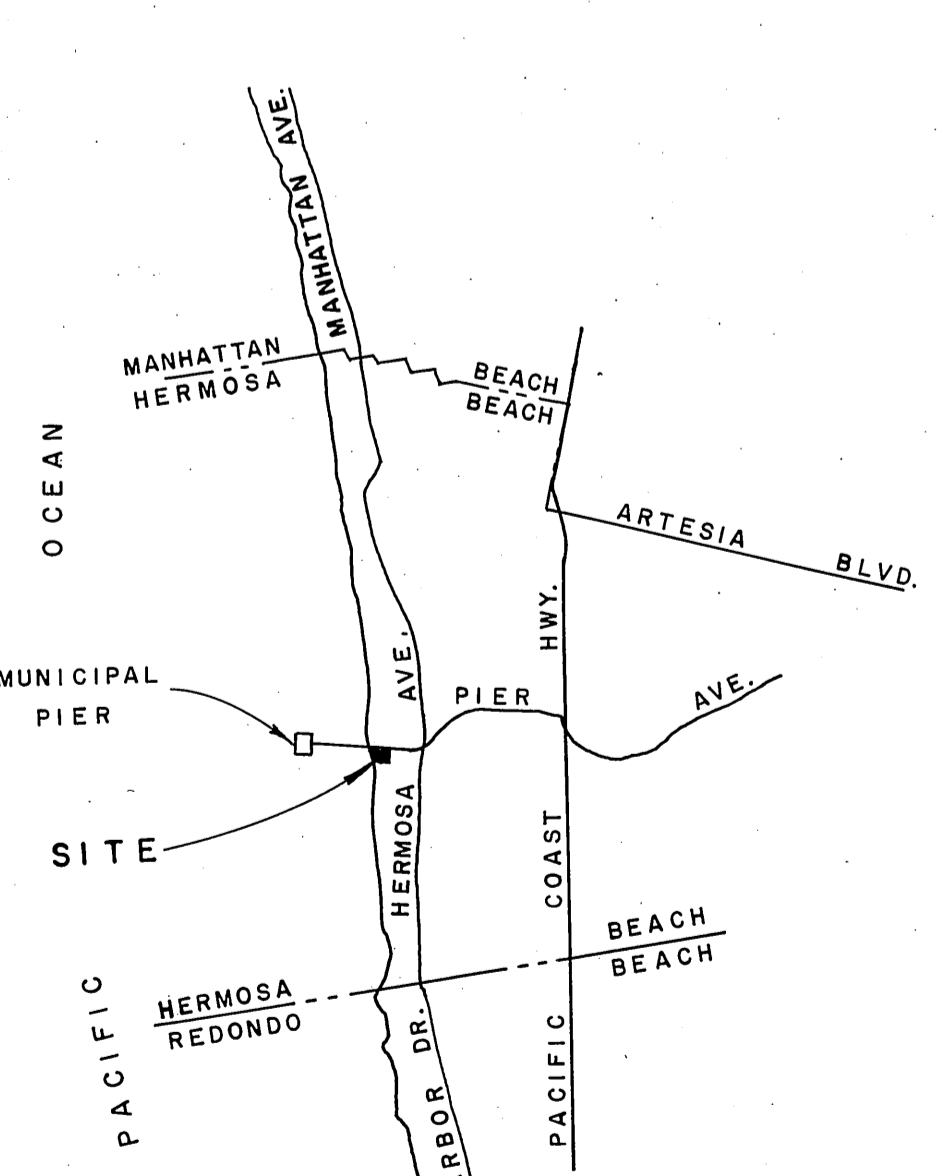
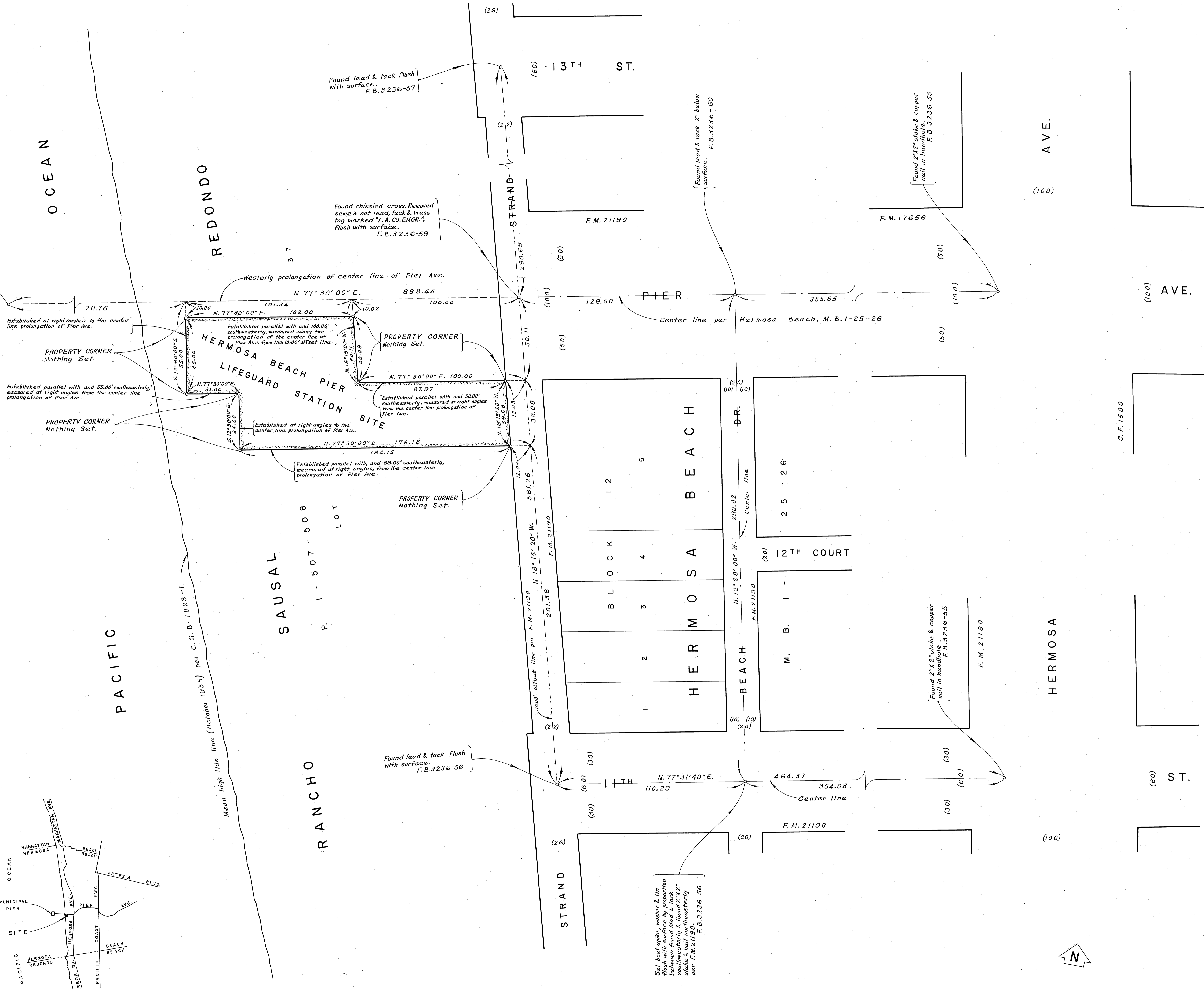


Set lead, tack & brass for marked  
2" x 2" stake & copper  
nail in handhole.  
F.B. 3236-63  
westerly.



VICINITY MAP  
NOT TO SCALE

Found lead & tack flush  
with surface.  
F.B. 3236-57

Found chiseled cross. Removed  
same & set lead, tack & brass  
tag marked "L.A. CO. ENGR."  
flush with surface.  
F.B. 3236-59

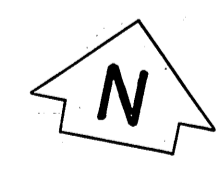
Found lead & tack 2" below  
surface.  
F.B. 3236-60

Found 2" x 2" stake & copper  
nail in handhole.  
F.B. 3236-53

Found lead & tack flush  
with surface.  
F.B. 3236-56

Set lead, spikes, washer & tin  
tag with surface lead & tack  
flush with surface. Found 2" x 2"  
stake & nail northwesterly  
per F.M. 21190.  
F.B. 3236-58

Found 2" x 2" stake & copper  
nail in handhole.  
F.B. 3236-55



SCALE IN FEET  
0 20 40 60

COUNTY OF LOS ANGELES DEPARTMENT OF COUNTY ENGINEER JOHN A. LAMBIE - COUNTY ENGINEER PREPARED BY SURVEY DIVISION IRA H. ALEXANDER - DIVISION ENGINEER SURVEYED BY D.S. FOULGER CHECKED BY J. CAVATAIO DRAWN BY G.H. BOYER, B.H. TABATA	BOUNDARY MAP OF <b>HERMOSA BEACH PIER          LIFEGUARD STATION SITE</b>		COUNTY SURVEYOR'S MAP NO. <b>B-5115</b>	SHEET 1 OF 1 SHEET FILED: <i>[Signature]</i> 19 70 DEPUTY SURVEYOR	REVISION NO. BY DATE
	BASIS OF BEARINGS THE BEARING OF PIER AVE. (N. 77° 30' 00" E.) AS SHOWN ON HERMOSA BEACH, M.B. 1-25-26		REFERENCE F. B. 3236-51-65	JOB NUMBER 0077.38	INDEX MAP NO. 25
	HERMOSA BEACH PIER LIFEGUARD STATION SITE		JULY 1970	SURVEYED	REVISION
	THE BEARING OF PIER AVE. (N. 77° 30' 00" E.) AS SHOWN ON HERMOSA BEACH, M.B. 1-25-26		F. B. 3236-51-65	SURVEYED	REVISION