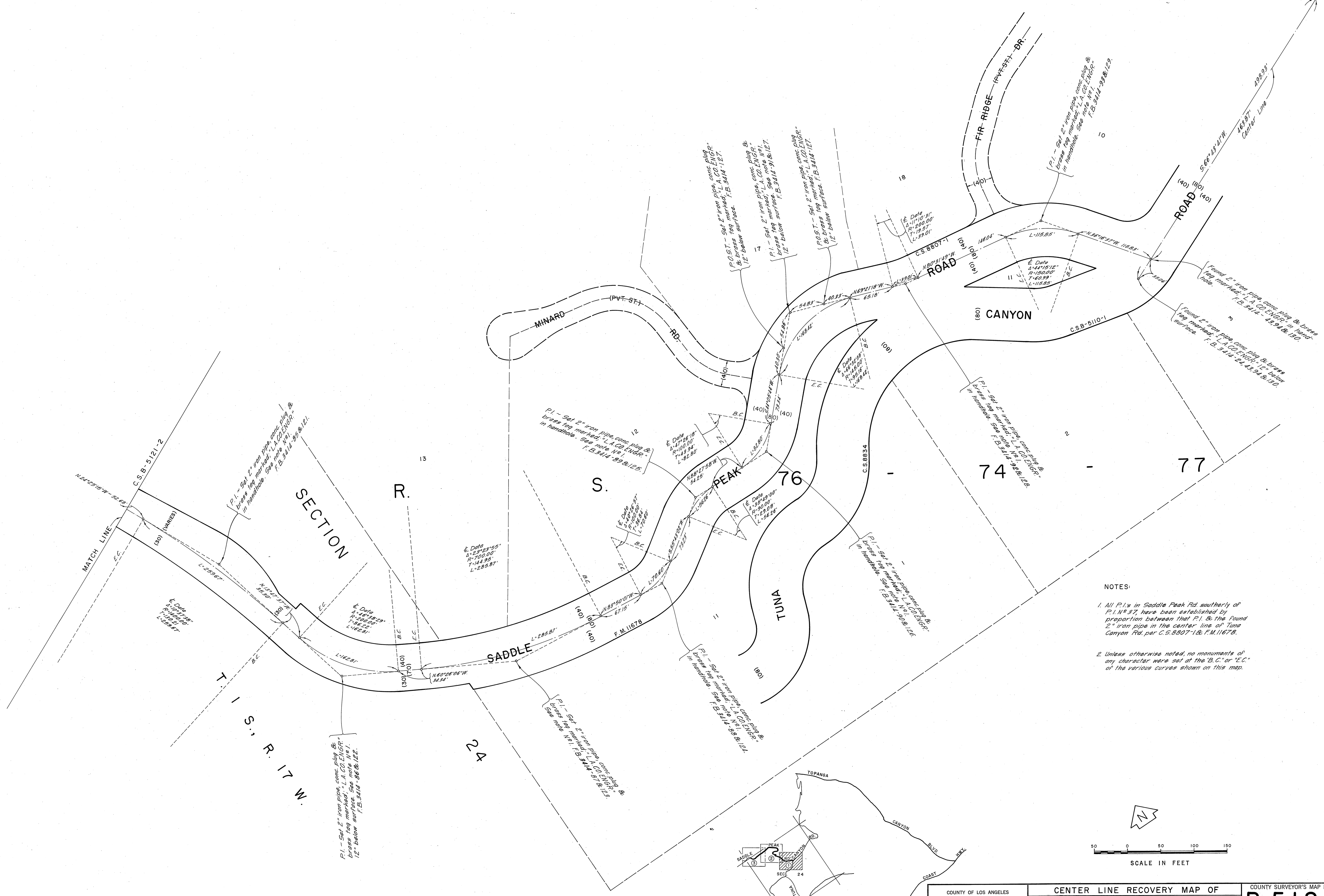
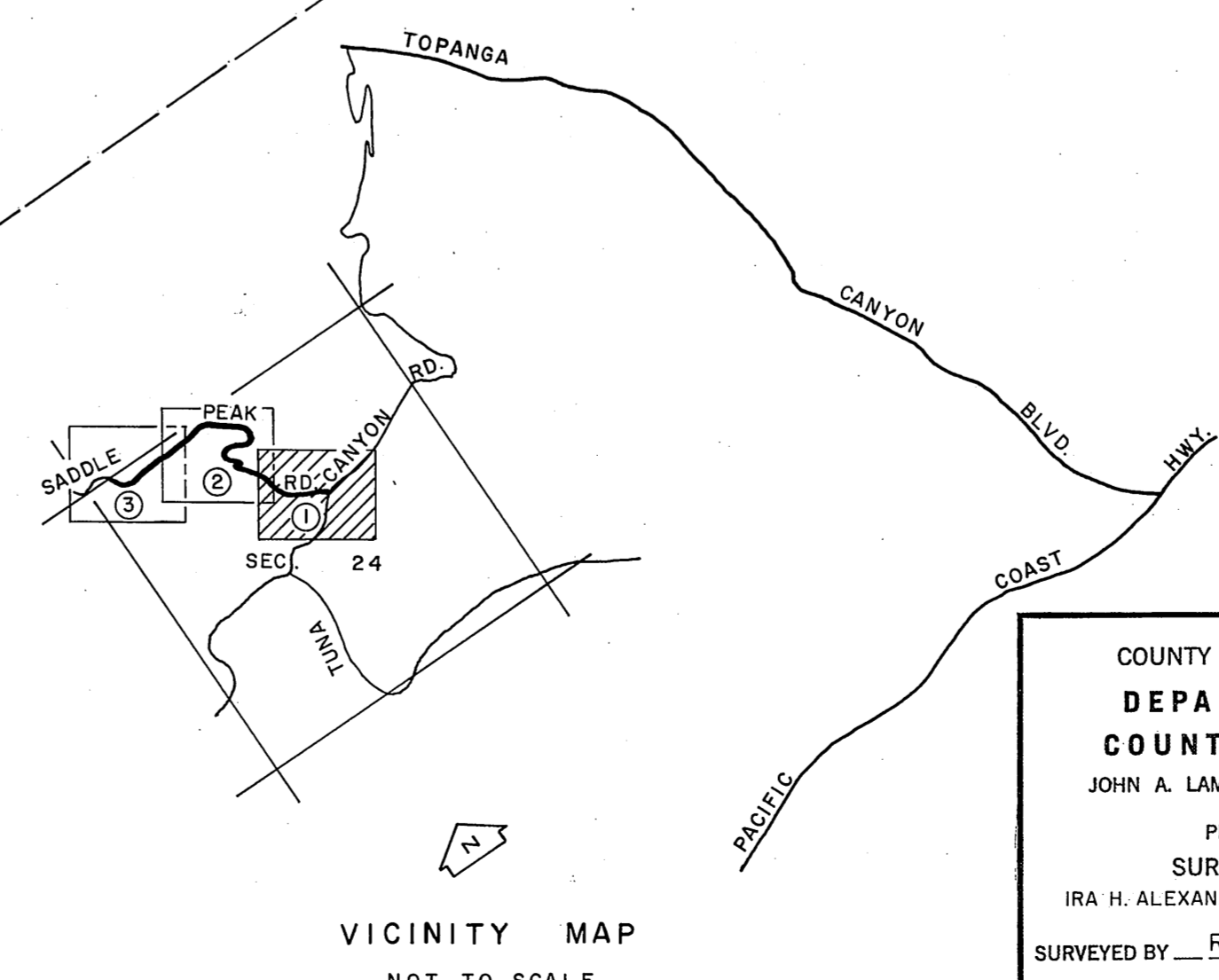
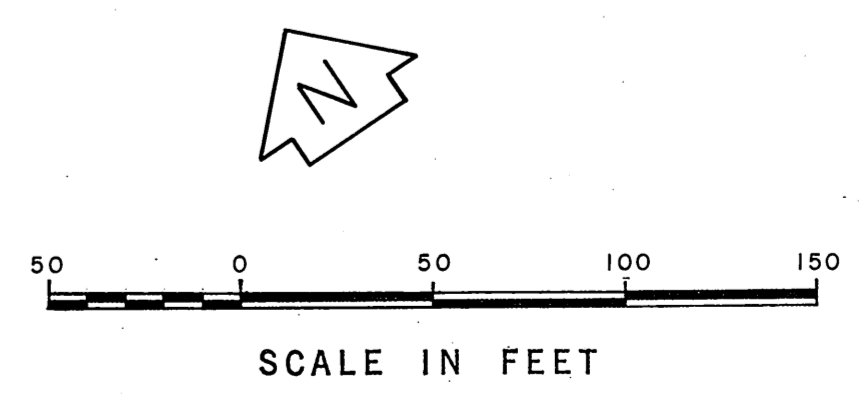


Found 2" iron pipe, conc. plug & brass tag marked "L.A. CO. ENGR. 8" below surface. See F.B. 3414-23, 24, 29 & 130.

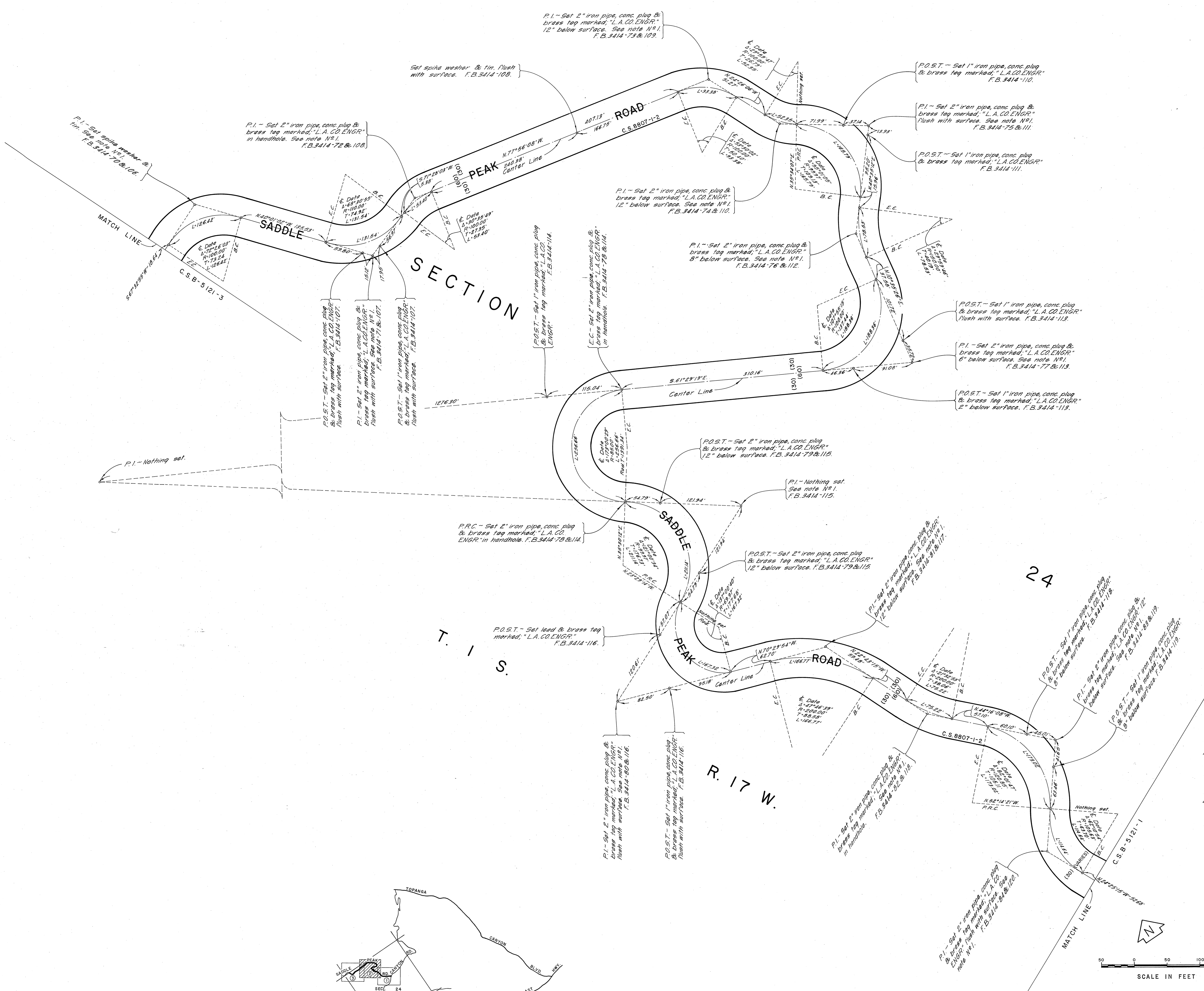


NOTES:

1. All P.I.'s in Saddle Peak Rd. southerly of F.M. 11678, have been established by proportion between that P.I. & the found 2" iron pipe in the center line of Tuna Canyon Rd. per C.S. 8807-1 & F.M. 11678.
2. Unless otherwise noted, no monuments of any character were set at the B.C. or E.C. of the various curves shown on this map.

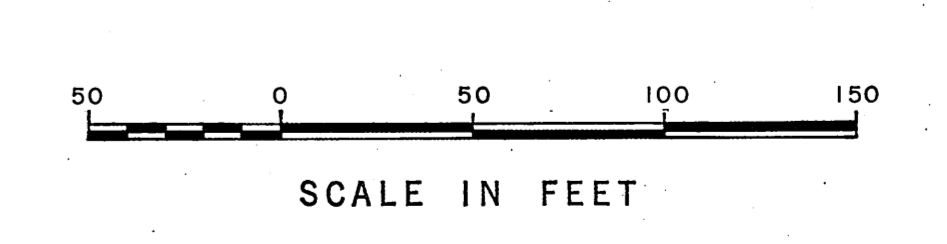
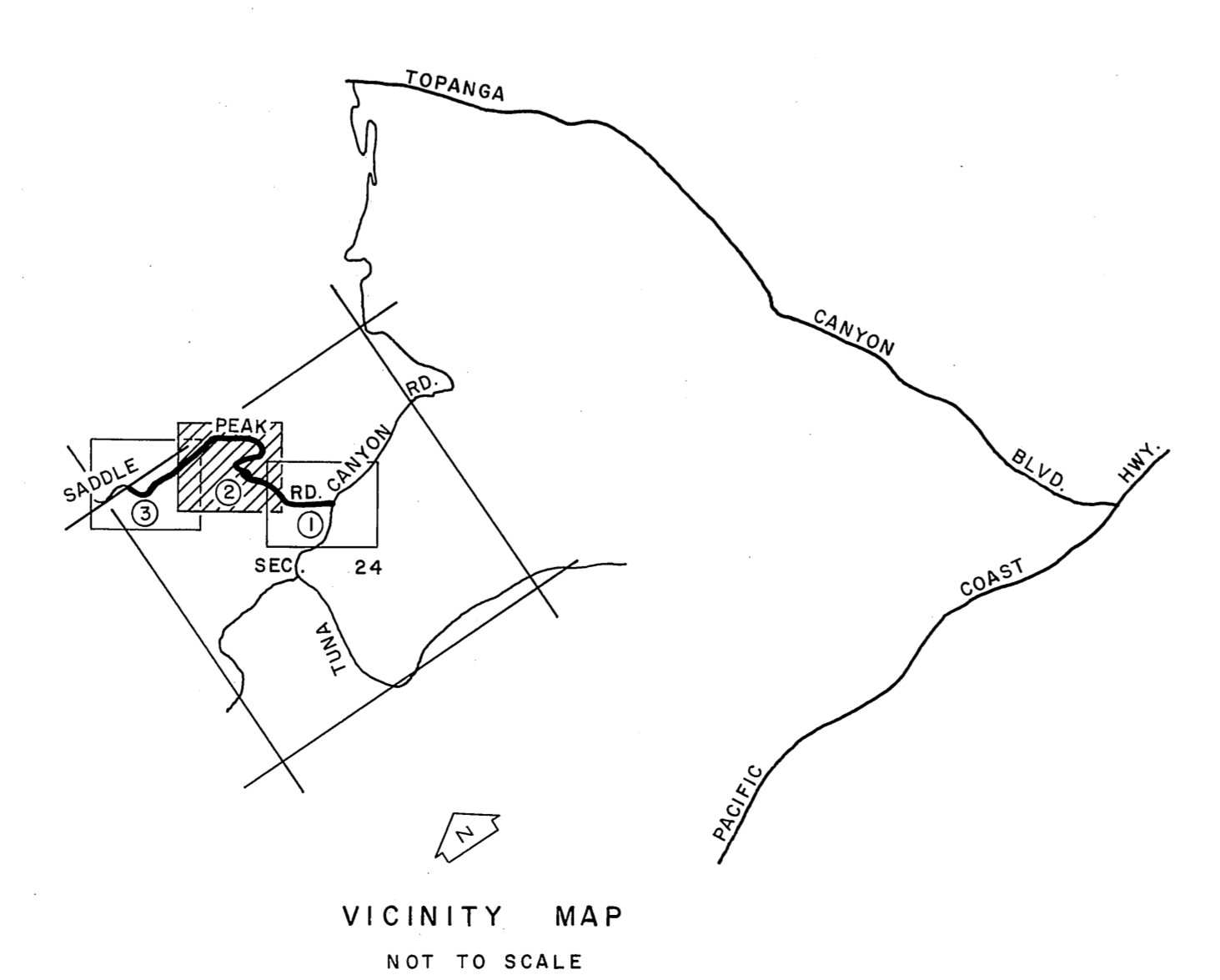


| | | | | |
|---|--|--|--|-------------------------|
| COUNTY OF LOS ANGELES DEPARTMENT OF COUNTY ENGINEER JOHN A. LAMBIE - COUNTY ENGINEER PREPARED BY SURVEY DIVISION IRA H. ALEXANDER - DIVISION ENGINEER SURVEYED BY R. DALE CHECKED BY J. CAVATAIO DRAWN BY S. BRIONES | CENTER LINE RECOVERY MAP OF SADDLE PEAK ROAD FROM TUNA CANYON ROAD TO N'LY. LINE, SEC. 24, T. 1 S., R. 17 W. | | COUNTY SURVEYOR'S MAP NO. B-5121 SHEET 1 OF 3 SHEETS FILED: <i>[Signature]</i> 19 27 COUNTY SURVEYED AUGUST 1966 MARCH 1970 REFERENCE F. B. 3414-57-130 | REVISION NO. BY DATE |
| | BASIS OF BEARINGS CALIFORNIA COORDINATE SYSTEM, ZONE 7 | | JOB NUMBER 0303-00 | INDEX MAP NO 129-097 |
| | VICINITY MAP NOT TO SCALE | | SCALE IN FEET 0 50 100 150 | |
| | MATCH LINE | | FOUND 2" iron pipe, conc. plug & brass tag marked "L.A. CO. ENGR. 8" below surface. See F.B. 3414-23, 24, 29 & 130. | |



NOTES:

- All P.I.'s in Saddle Peak Rd. southerly of P.I. N° 37, have been established by proportion between that P.I. & the Found 2" iron pipe in the center line of Tuna Canyon Rd. per C.S. 8807-1 & F.M. 11678.
- Unless otherwise noted, no monuments of any character were set of the "B.C." or "E.C." of the various curves shown on this map.



| | | | | |
|--|---|--|--|-------------------------|
| COUNTY OF LOS ANGELES DEPARTMENT OF COUNTY ENGINEER JOHN A. LAMBIE, COUNTY ENGINEER PREPARED BY SURVEY DIVISION IRA H. ALEXANDER, DIVISION ENGINEER SURVEYED BY R. DALE CHECKED BY J. CAVATAIO DRAWN BY S. BRIONES | CENTER LINE RECOVERY MAP OF SADDLE PEAK ROAD FROM TUNA CANYON ROAD TO N'LY. LINE, SEC. 24, T. 1 S., R. 17 W. BASIS OF BEARINGS CALIFORNIA COORDINATE SYSTEM, ZONE 7 | | COUNTY SURVEYOR'S MAP NO. B-5121 SHEET 2 OF 3 SHEETS FILED: <i>January 18, 1971</i> BY: <i>R. Dale</i> SURVEYED AUGUST 1968 - MARCH 1970 F. B. 3414 - 57-130 | REVISION NO. BY DATE |
| | JOB NUMBER 0303.00 | | INDEX MAP NO. 129-097 | |
| | | | | |
| | | | | |
| | | | | |

