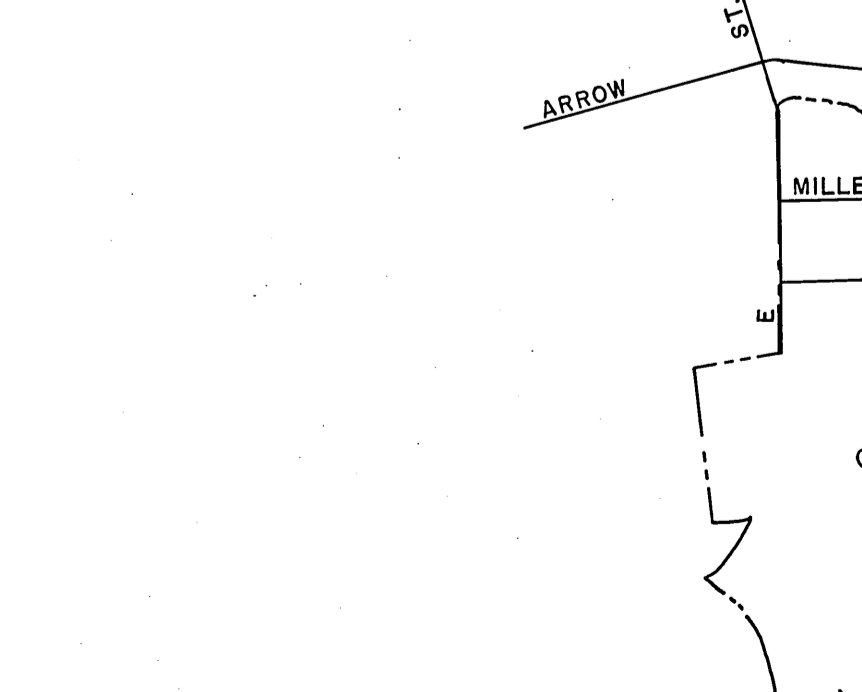
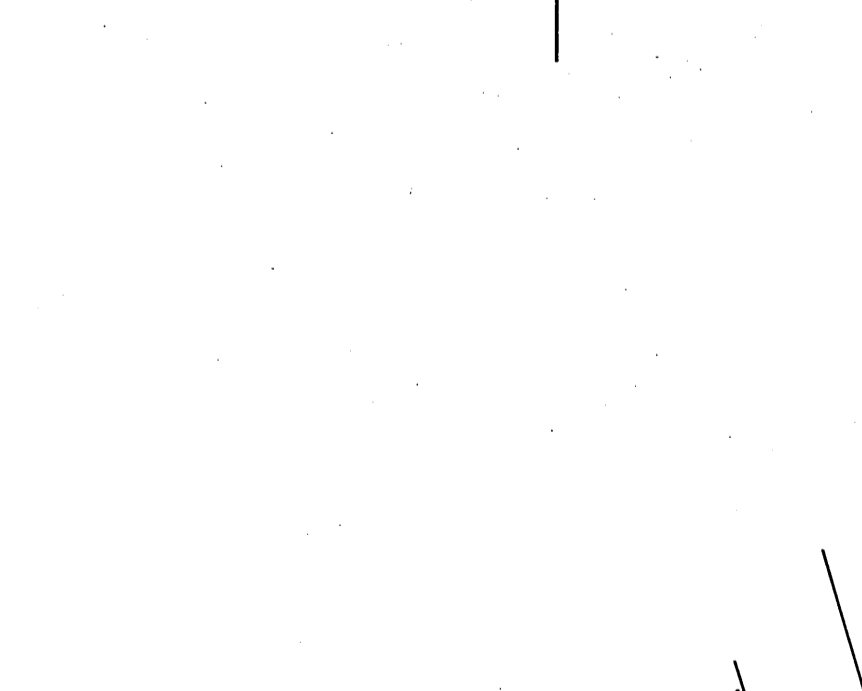
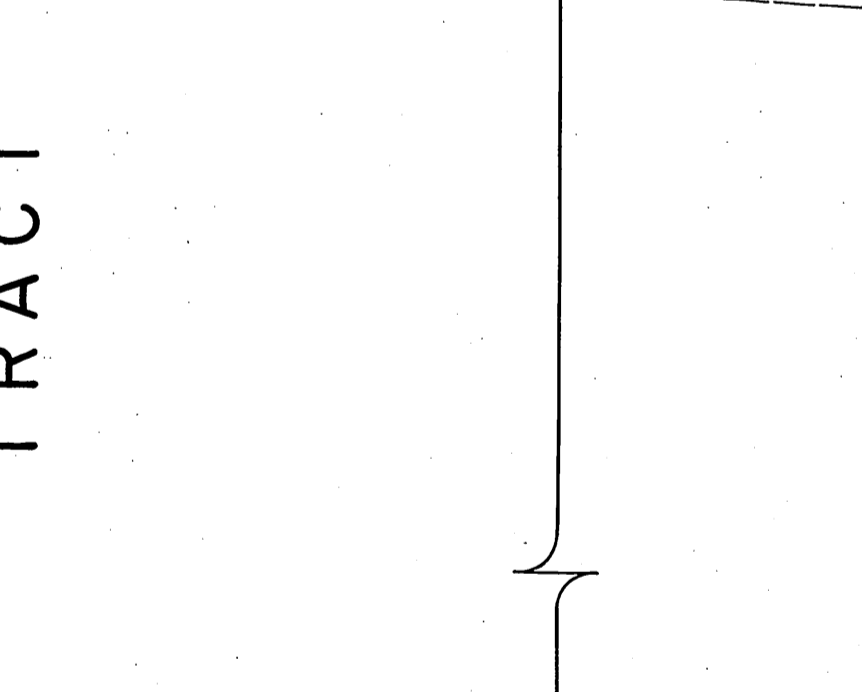
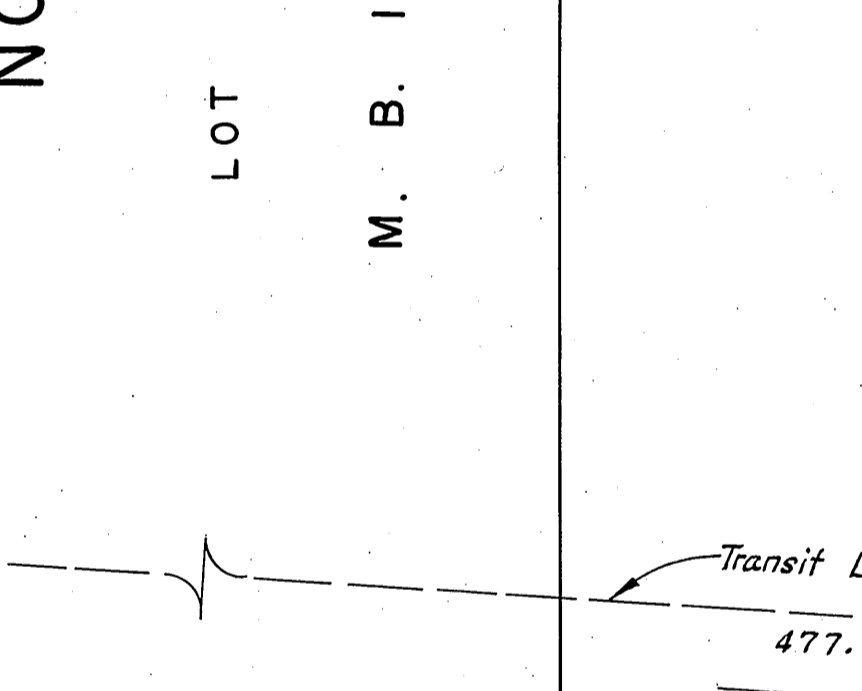
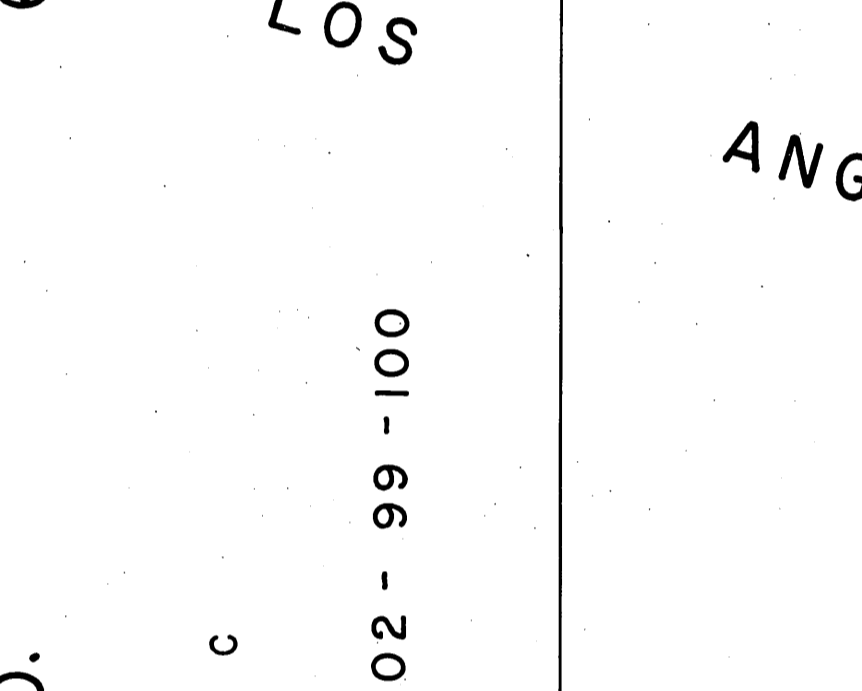
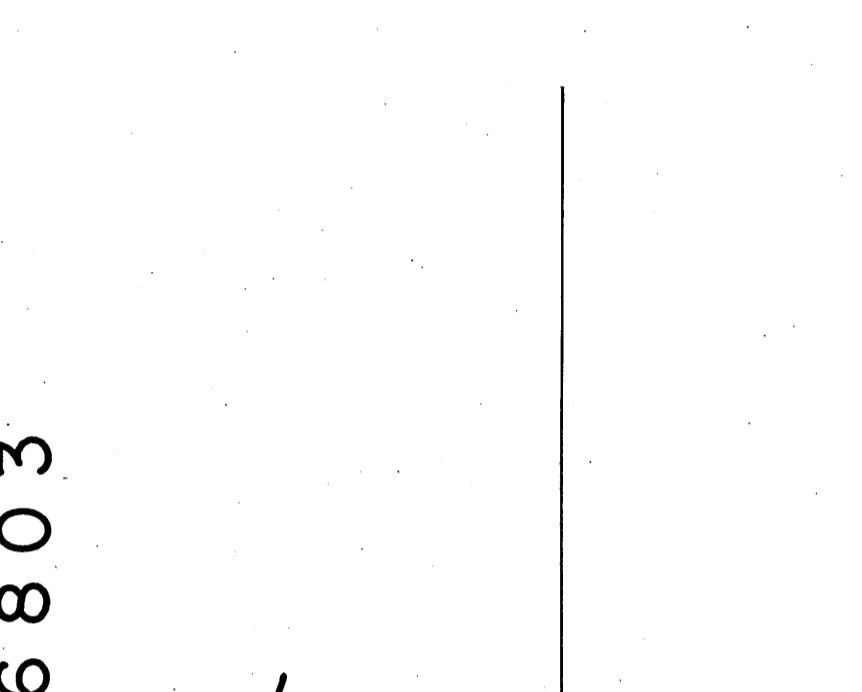
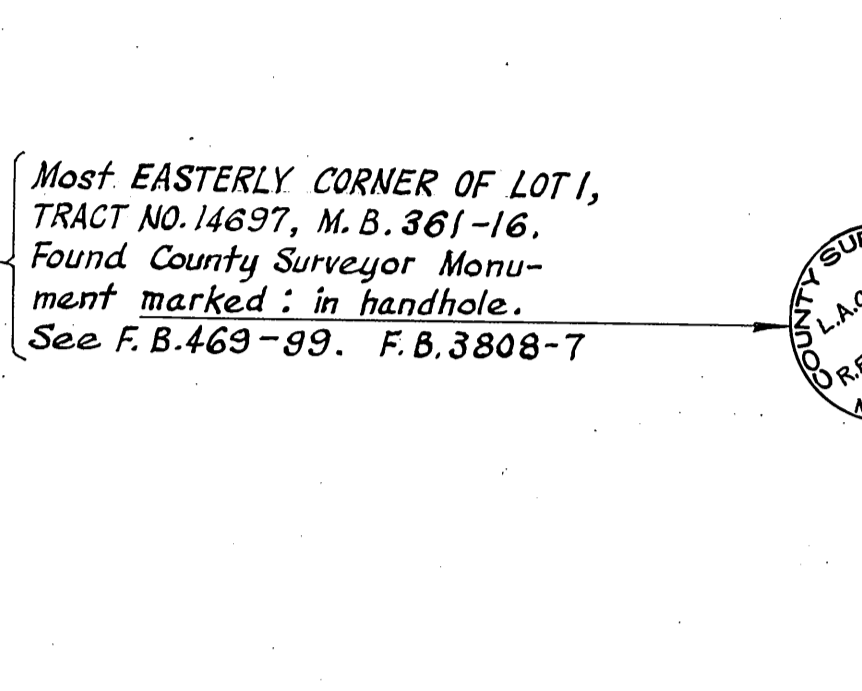
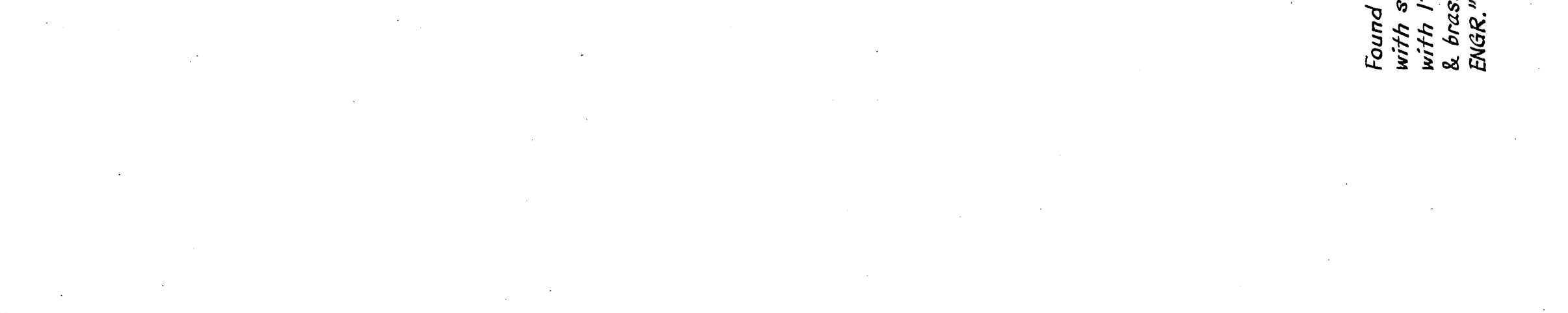
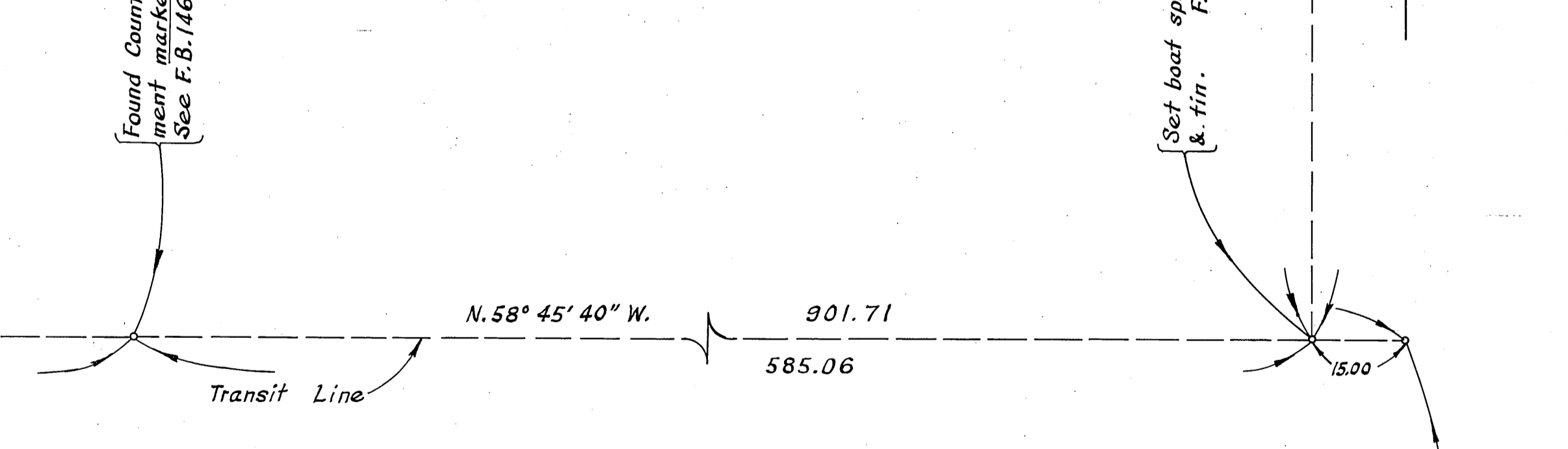
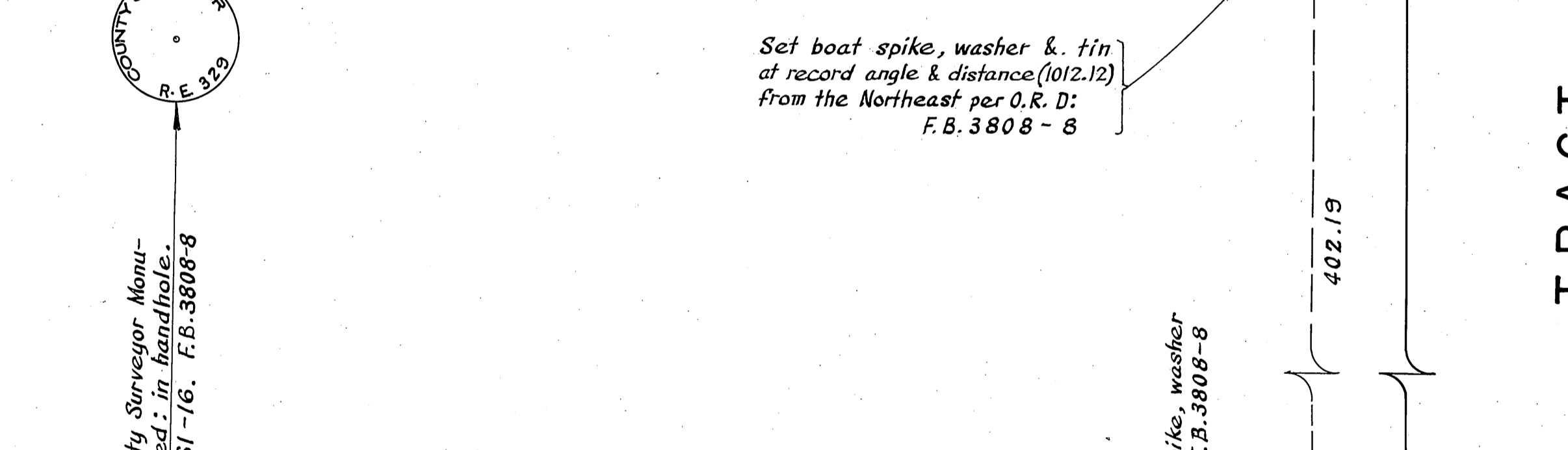
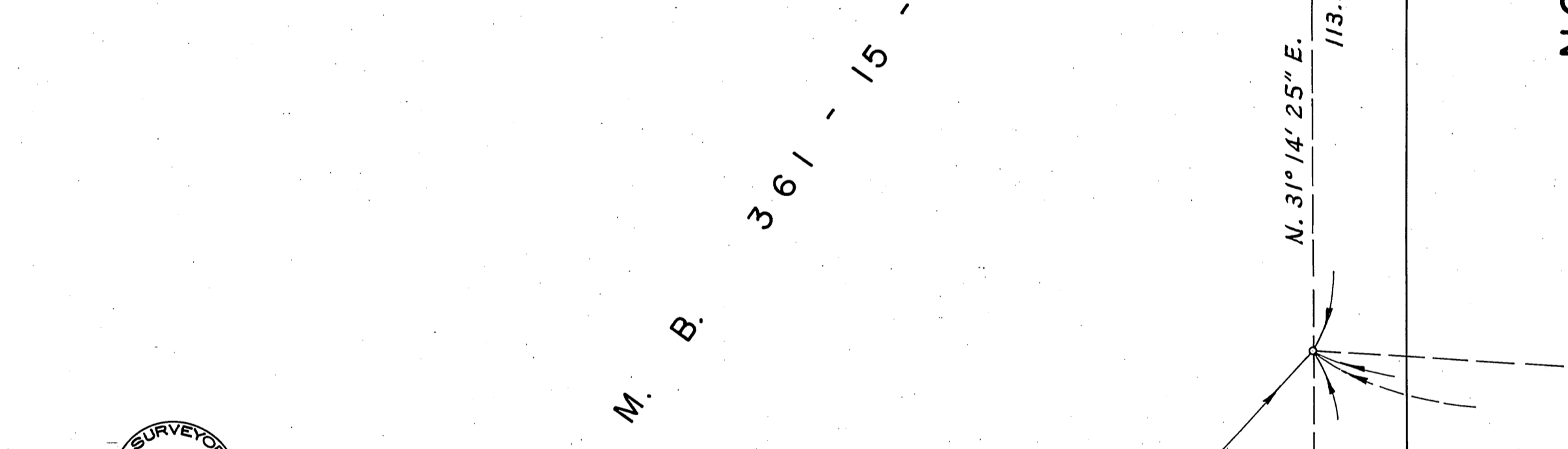
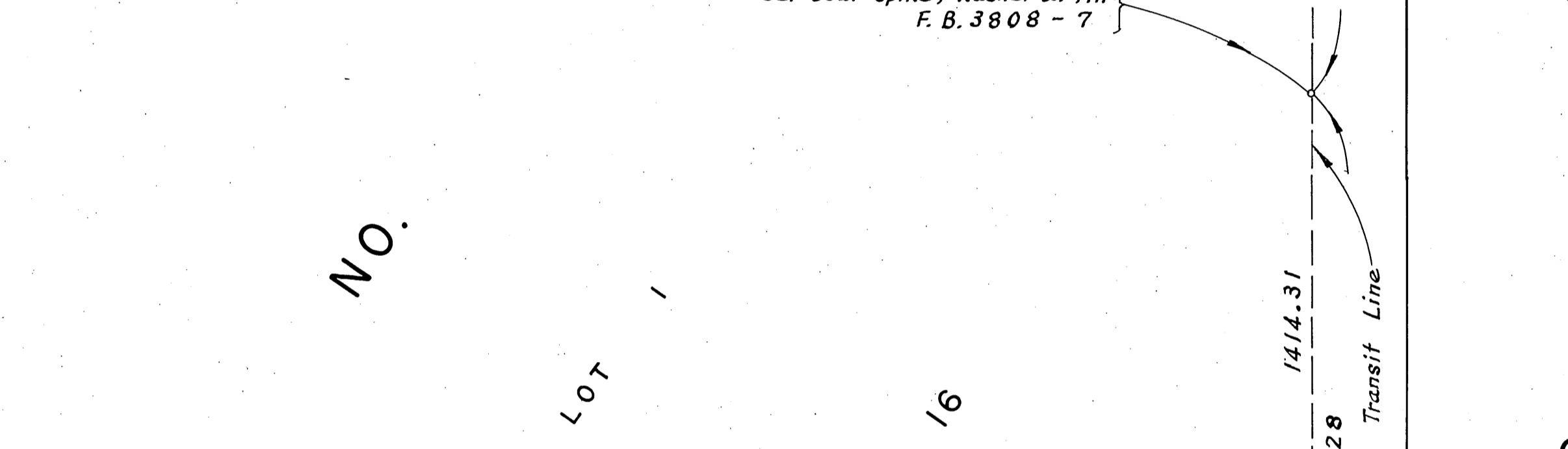
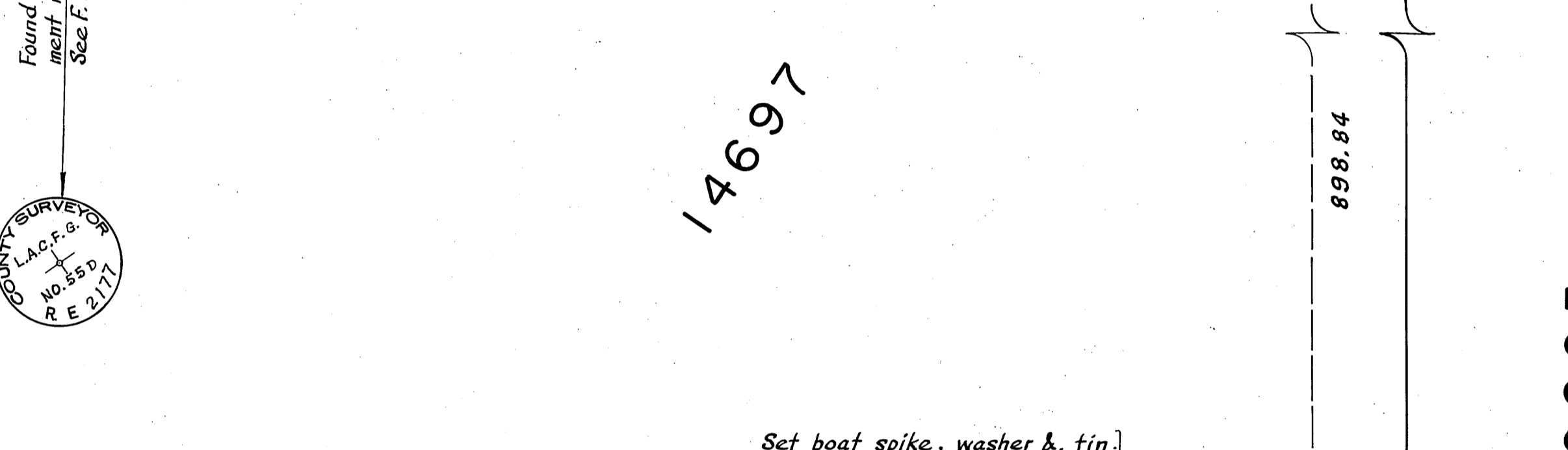
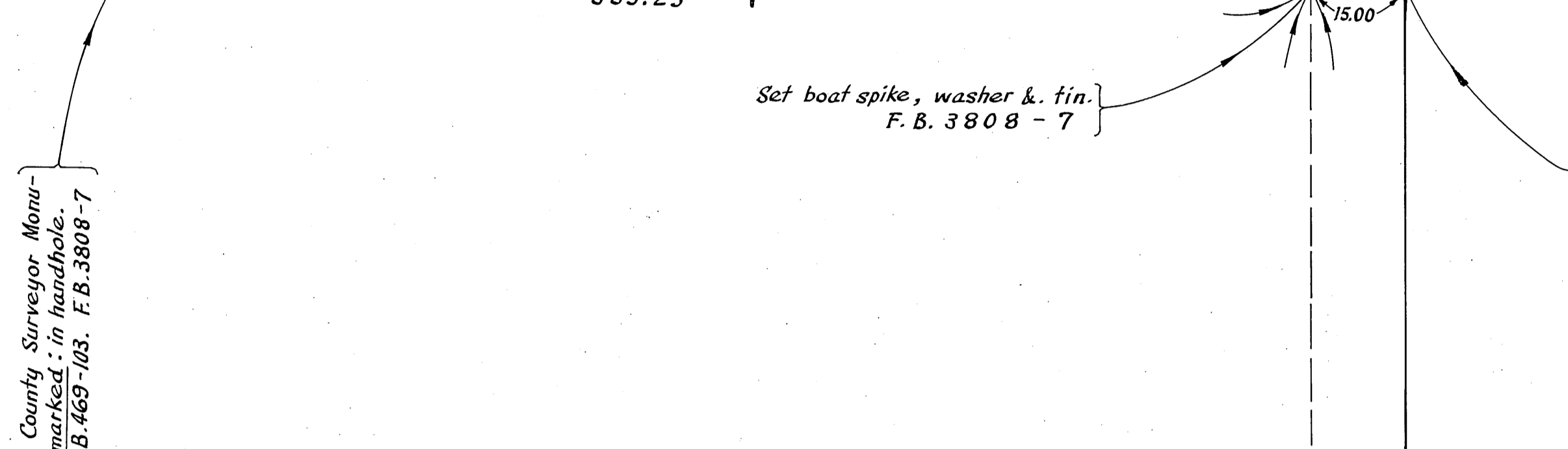
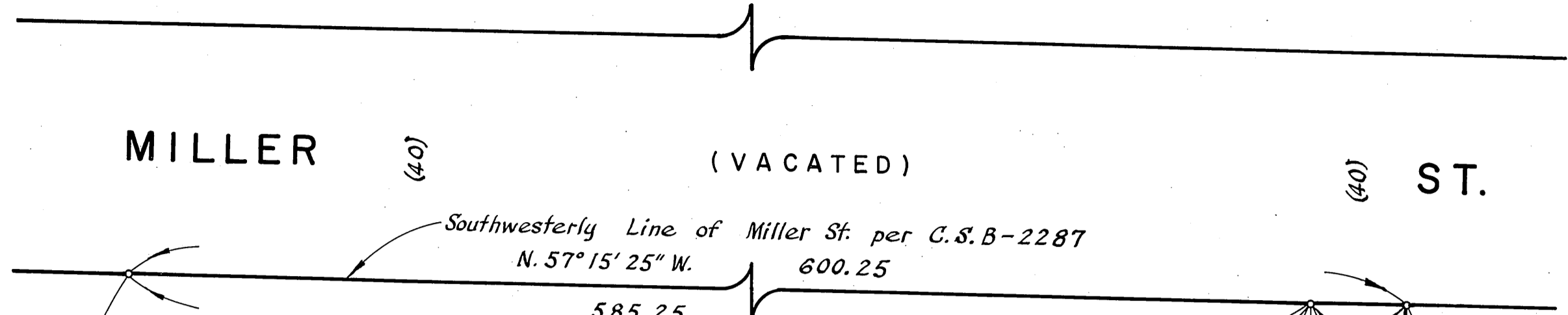


TRACT



RANCHO

ANGELES

NO. 6803

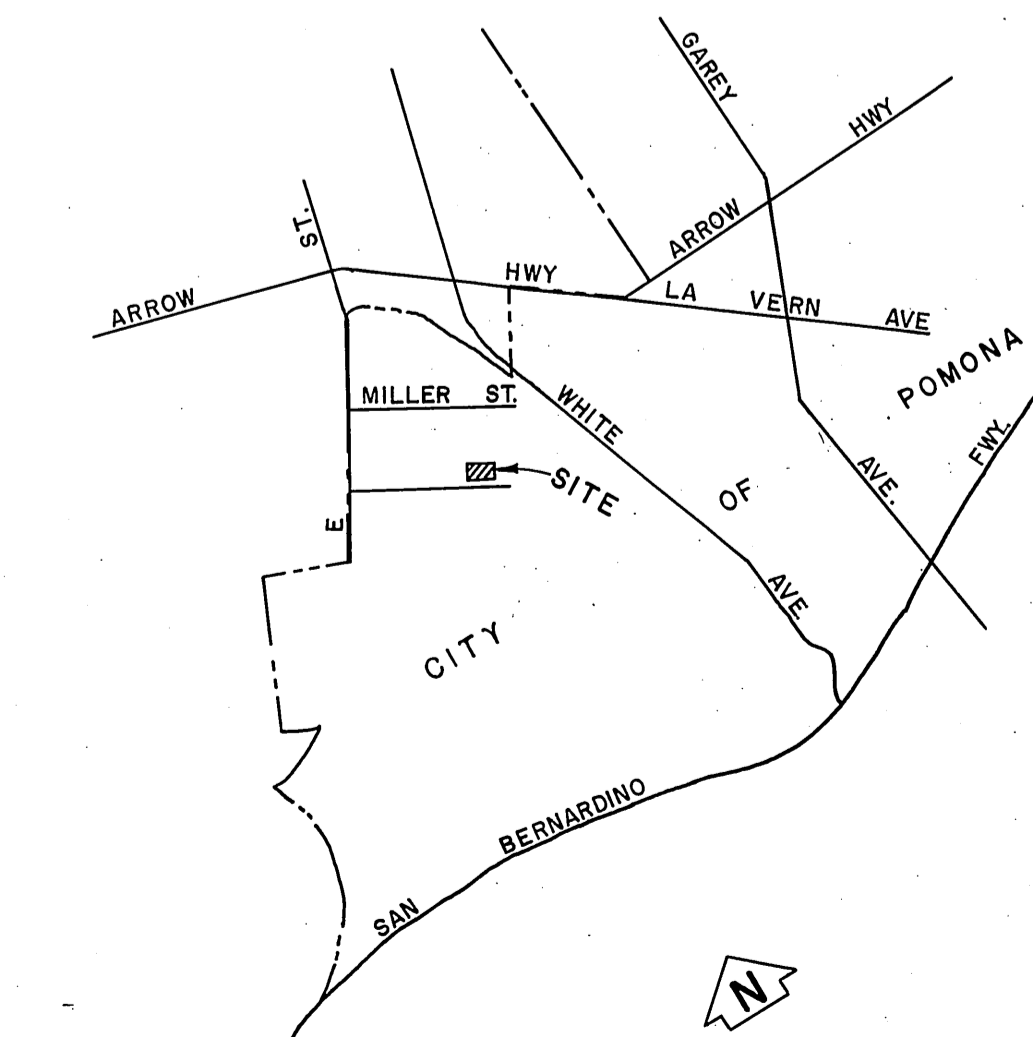
LOS

NO. 361-15-16

LOT C

M. B. 102-99-100

TRACT



VICINITY MAP NOT TO SCALE

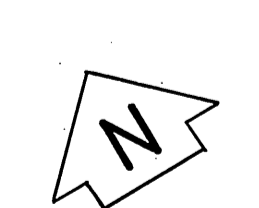
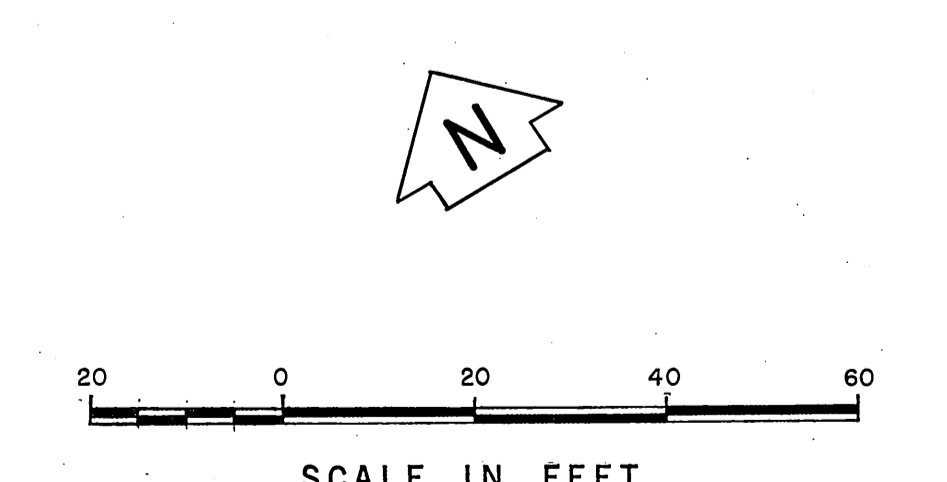
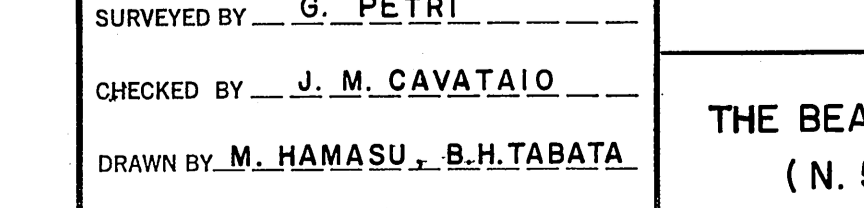
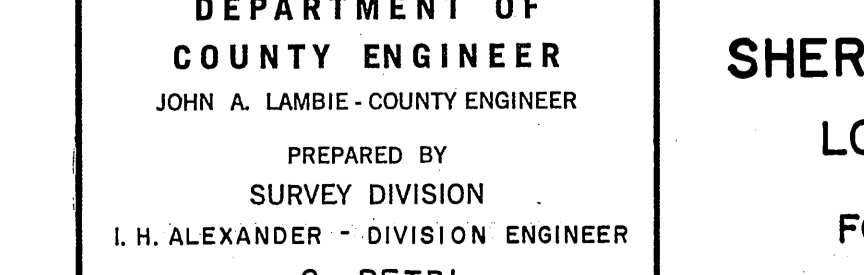
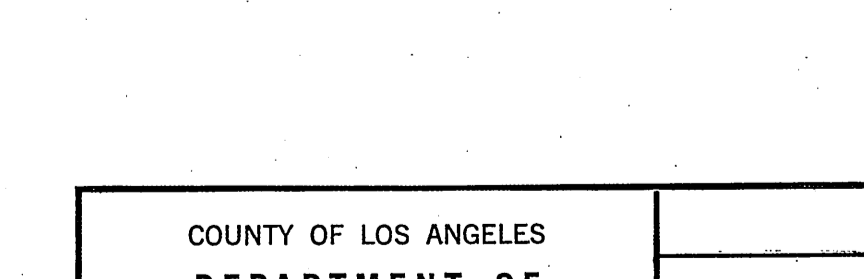
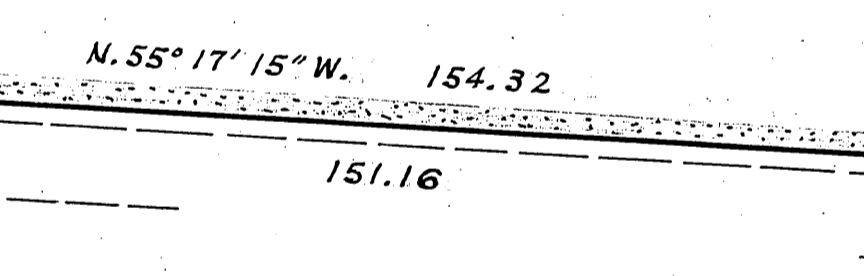
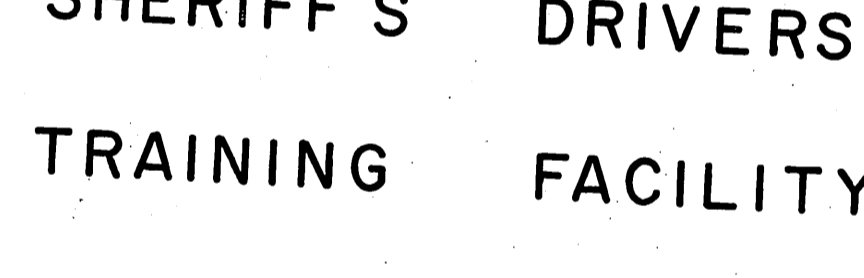
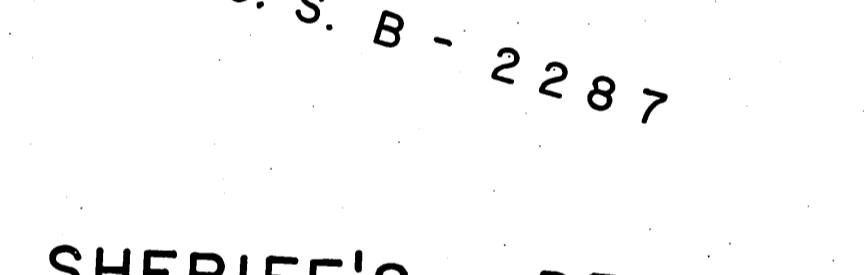
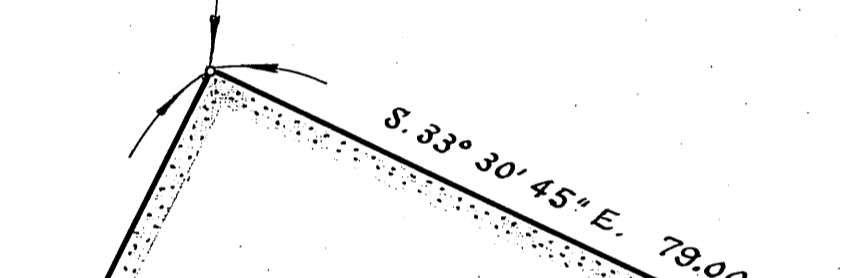
SAN JOSE

COUNTY C. S. B - 2287

SHERIFF'S DRIVERS TRAINING FACILITY

SHERIFF'S DRIVERS TRAINING FACILITY

P. 2 - 292 - 293



COUNTY OF LOS ANGELES DEPARTMENT OF COUNTY ENGINEER JOHN A. LAMBE, COUNTY ENGINEER PREPARED BY SURVEY DIVISION L.H. ALEXANDER - DIVISION ENGINEER SURVEYED BY - S. PETRI CHECKED BY - J. M. CAVATALO DRAWN BY - M. HAMASU, B.H. TABATA	BOUNDARY MAP OF SHERIFF'S DRIVERS TRAINING FACILITY LOS ANGELES COUNTY FAIRGROUNDS FOR TOPOGRAPHY SEE SURVEY DIVISION FILE MAP NO. P. T. 447		COUNTY SURVEYOR'S MAP NO. B-5126 SHEET 1 OF 1 SHEET FILED: <i>January 27</i> 19 <i>71</i> <i>S. J. Wessell</i> SURVEY OCT. 1969, OCT. 1970 REFERENCE F. B. 3808-5-18 JOB NUMBER 0018.41 INDEX MAP NO. 49	REVISION NO. BY DATE
	THE BEARING OF SOUTHWESTERLY LINE OF MILLER ST. (N. 57° 15' 25" W.) AS SHOWN ON C.S.B-2287			