

C.S.B-5127-2

MATCH LINE

H. W. MILLS SUBDIVISION  
(B'NAI BRITH CEMETERY)  
M. R. 22 - 18

ANGLE POINT  
w/ spike washer & pin  
See Ref. Dept. F.B. 330-7,  
F.B. 303-2, 12, 36.

TRACT NO. 53

Found spike washer & pin  
with punch mark. See  
Ref. Dept. F.B. 330-8,  
F.B. 303-2, 12.

F. M. 20071 - 2

OLYMPIC

(100)

5024

AVE.

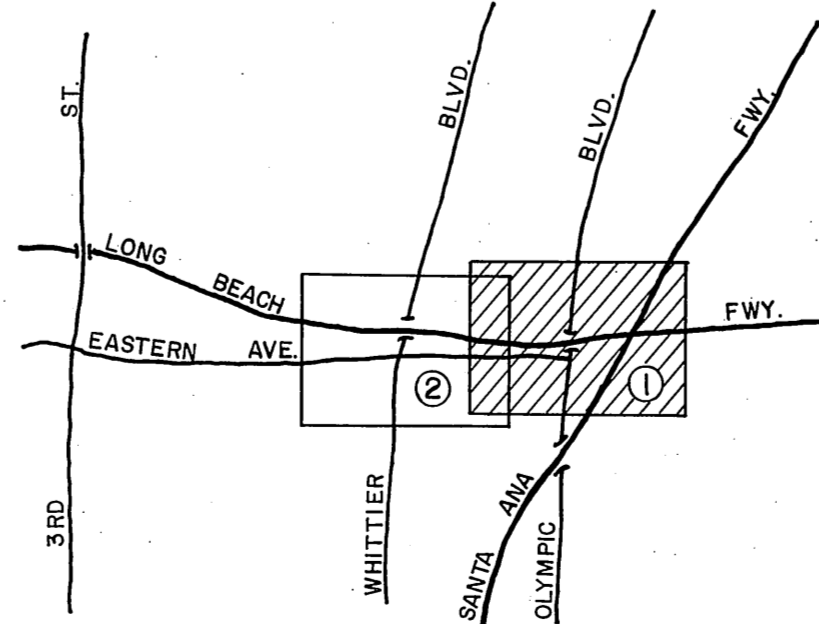
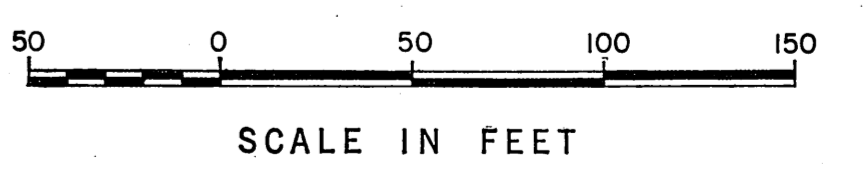
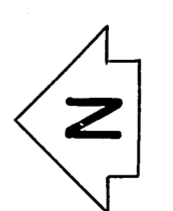
(50)

TELEGRAPH

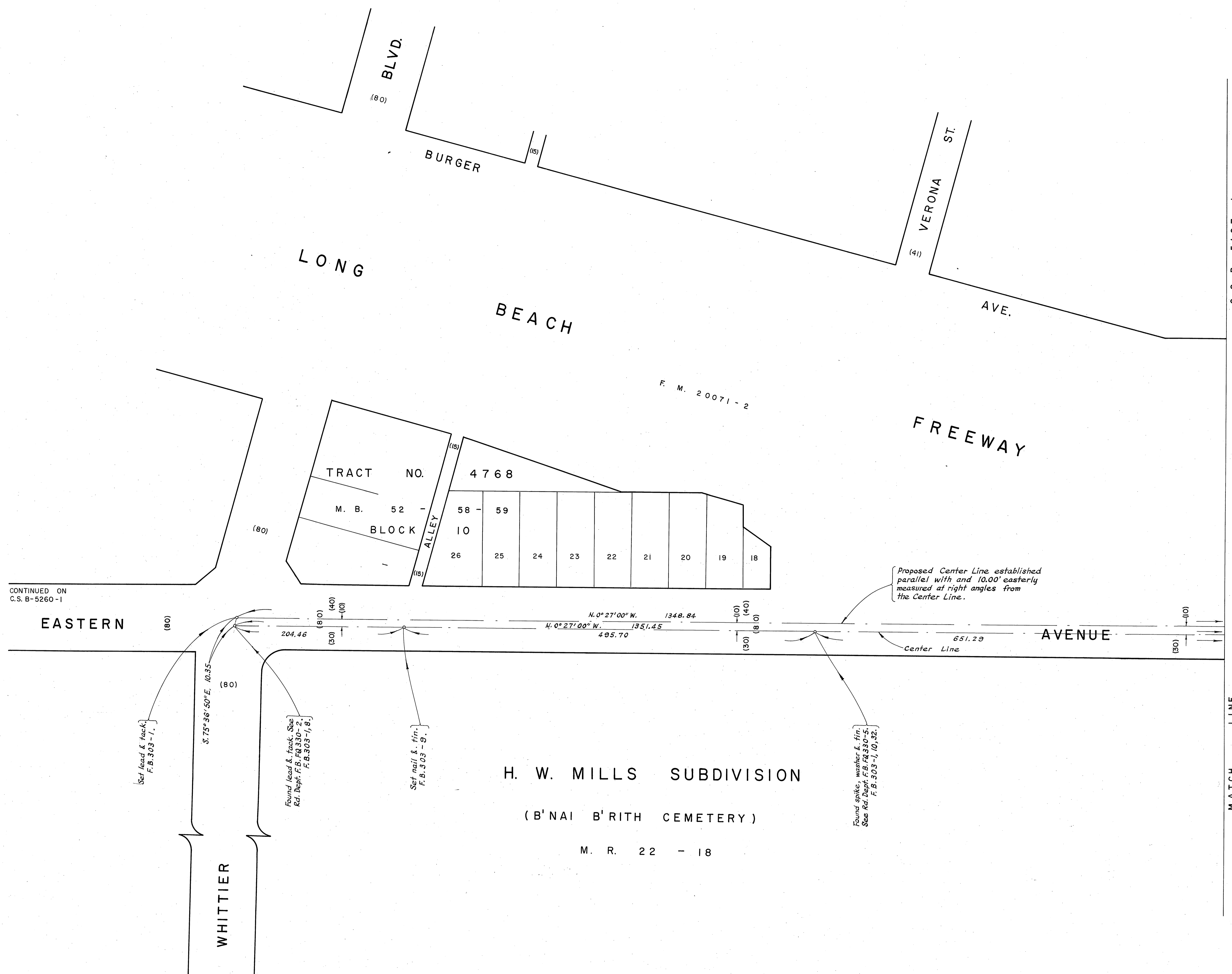
SANTA ANA

M. M. 144

NOTE:  
FOR THE ESTABLISHMENT OF THE EXISTING  
CENTER LINE SHOWN HEREON SEE C.S.B-112



COUNTY OF LOS ANGELES DEPARTMENT OF COUNTY ENGINEER JOHN A. LAMBIE - COUNTY ENGINEER PREPARED BY SURVEY DIVISION L.H. ALEXANDER - DIVISION ENGINEER SURVEYED BY C.V. CRUMLEY CHECKED BY W. EDMONDSON DRAWN BY G. BOYER, B.H. TABATA	<b>ALIGNMENT MAP OF</b> <b>EASTERN AVENUE</b> FROM <b>TELEGRAPH ROAD</b> TO <b>WHITTIER BLVD.</b>		COUNTY SURVEYOR'S MAP NO. <b>B-5127</b> SHEET 1 OF 2 SHEETS FILED: <i>Boyer</i> , 1927 DEPUTY SURVEYED OCT - NOV., 1927 REFERENCE F. B. 303 JOB NUMBER 0075.27	REVISION NO. BY DATE
	BASIS OF BEARINGS THE BEARING OF EASTERN AVE. ( $N. 0^{\circ} 02' 40'' E.$ ) AS SHOWN ON C.S.B-112		INDEX MAP NO. 36	



CONTINUED ON C.S.B-5260-1

Proposed Center Line established parallel with and 10.00' easterly measured at right angles from the Center Line.

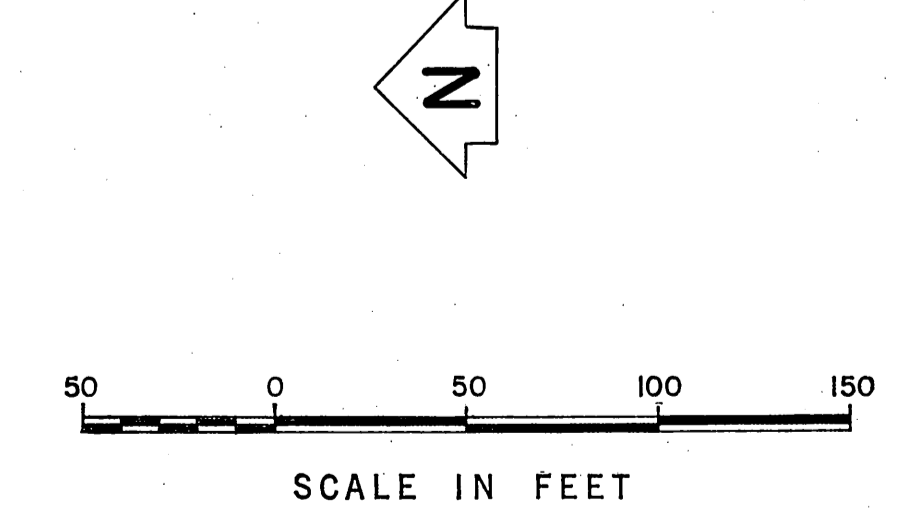
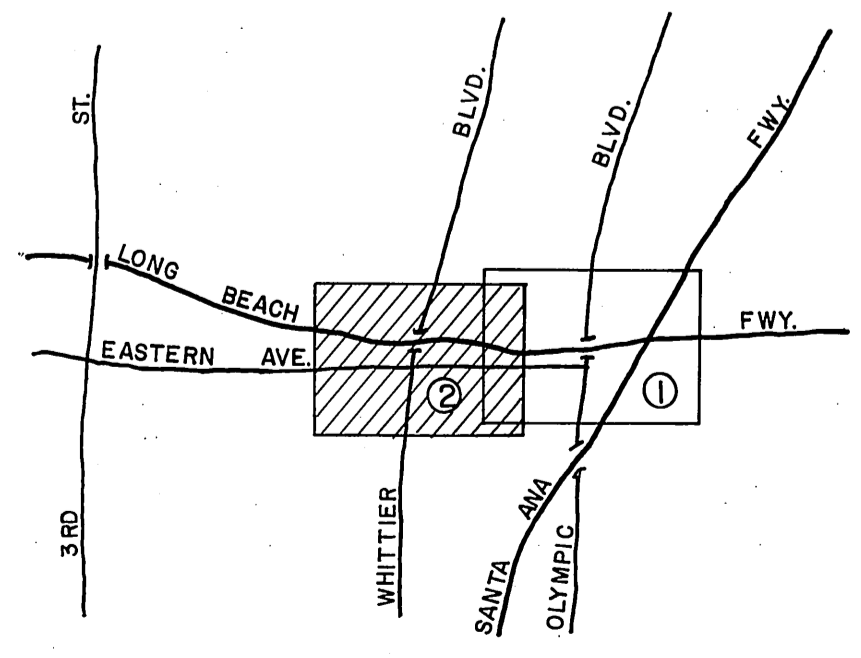
Set back & track F.B. 303-11.

Found (lost & track) Rd. Dept. F.B. 303-2 F.B. 303-1, B.

Set mail & fin. F.B. 303-9.

Found spikes, washer & fin. See Ad Dept. F.B. 303-5. F.B. 303-1, 10, 32.

NOTE: FOR THE ESTABLISHMENT OF THE EXISTING CENTER LINE SHOWN HEREON SEE C.S.B-112



COUNTY OF LOS ANGELES DEPARTMENT OF COUNTY ENGINEER JOHN A. LAMBIE - COUNTY ENGINEER PREPARED BY SURVEY DIVISION I. H. ALEXANDER - DIVISION ENGINEER SURVEYED BY G. V. CRUMLEY CHECKED BY W. EDMONDSON DRAWN BY G. BOYER, B. H. TABATA	<b>ALIGNMENT MAP OF</b> <b>EASTERN AVENUE</b> FROM TELEGRAPH ROAD TO WHITTIER BLVD.		COUNTY SURVEYOR'S MAP NO. <b>B-5127</b> SHEET 2 OF 2 SHEETS FILED: February 8, 1927 R. J. Mitchell DEPUTY SURVEYOR OCT. - NOV., 1927 REFERENCE F. B. 303	REVISION NO. BY DATE
	BASIS OF BEARINGS THE BEARING OF EASTERN AVE. (N. 0° 02' 40" E.) AS SHOWN ON C.S.B-112		JOB NUMBER 0075.27	INDEX MAP NO. 36