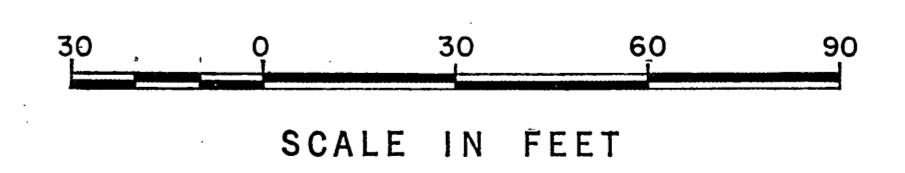
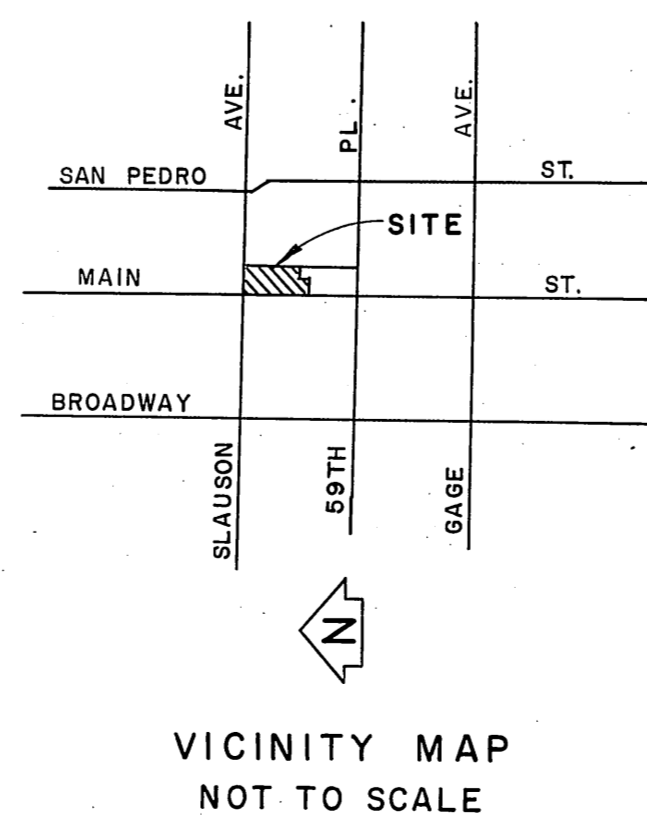
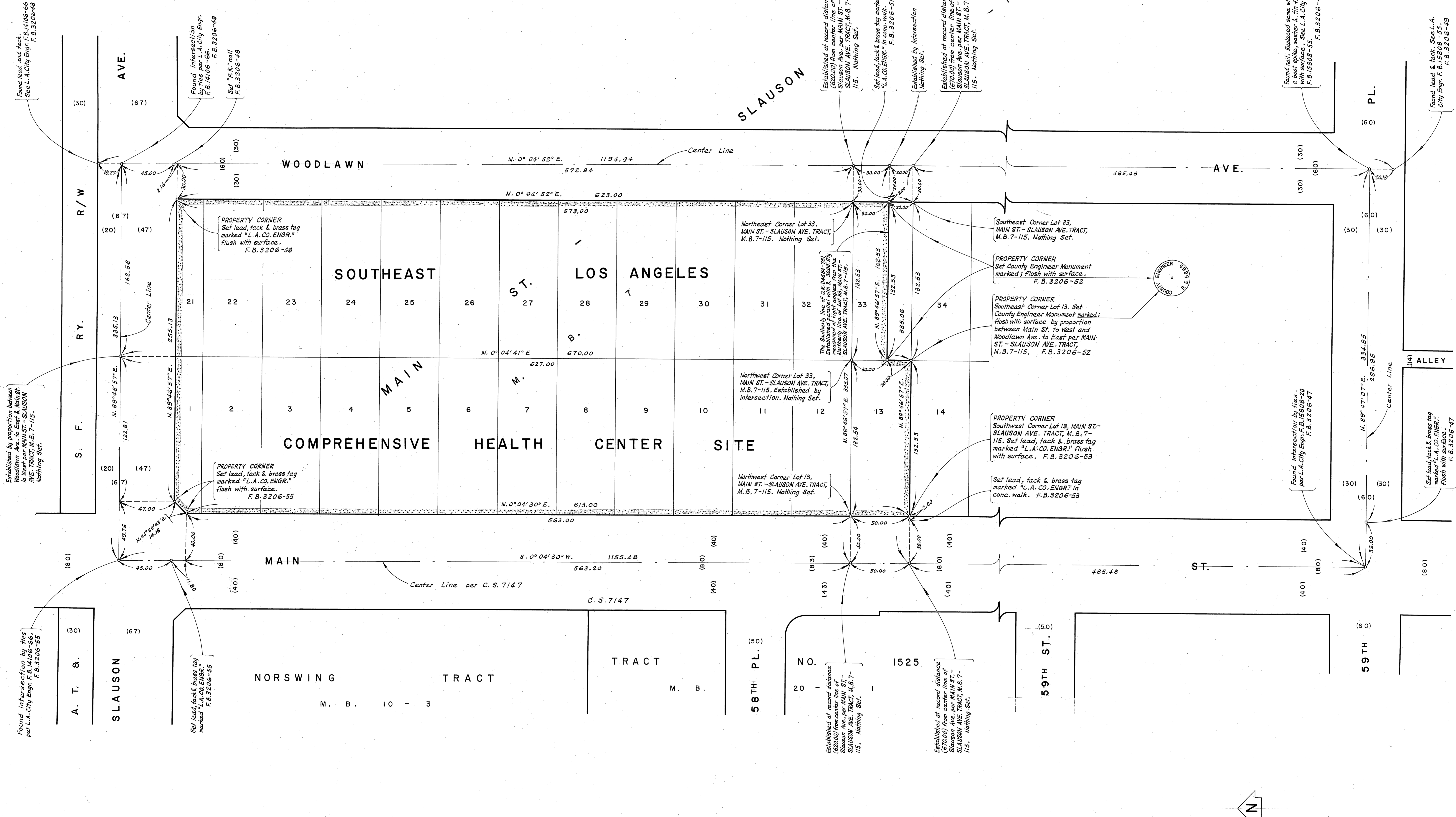


NOTE: FOR THE ALIGNMENT OF SLAUSON AVE. A SECONDARY HIGHWAY, AS PROPOSED ON THE MASTER PLAN OF HIGHWAYS CONTACT CITY OF LOS ANGELES.



COUNTY OF LOS ANGELES DEPARTMENT OF COUNTY ENGINEER JOHN A. LAMBIE, COUNTY ENGINEER PREPARED BY SURVEY DIVISION I. H. ALEXANDER - DIVISION ENGINEER SURVEYED BY D. S. FOULGER CHECKED BY G. BAILLEY DRAWN BY B. H. TABATA	BOUNDARY MAP OF <b>SOUTHEAST LOS ANGELES</b> <b>COMPREHENSIVE HEALTH CENTER SITE</b> FOR TOPOGRAPHY SEE SURVEY DIVISION FILE MAP NO. P.T. 490		COUNTY SURVEYOR'S MAP NO. <b>B-5129</b> SHEET 1 OF 1 SHEET FILED: <i>March 9, 1977</i> DEPUTY SURVEYED OCT. 1970 REFERENCE F. B. 3206 JOB NUMBER 0018.44	REVISION NO. BY DATE
	THE BEARING OF MAIN STREET (S. 0° 04' 30" W.) AS SHOWN ON C. S. 7147		INDEX MAP NO. 7	