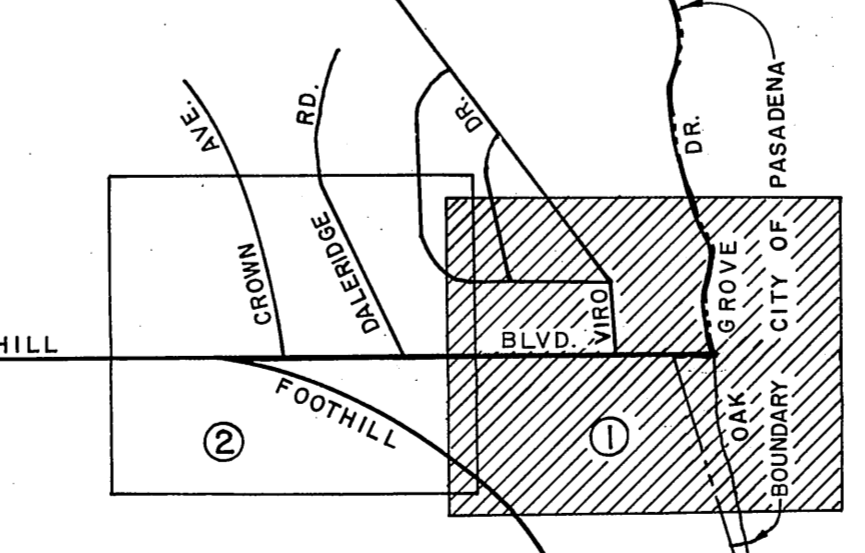


MATCH LINE

SUBDIVISIONS OF RANCHO LA CAÑADA

REVISIONS
 ① Michigan Avenue changed to Foothill Blvd. See S.N.C. No. 627

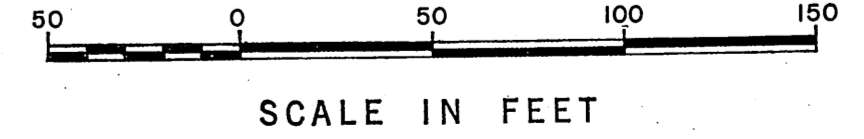
Found wood head spike adjacent to E. 4889' by the monument. See Tract No. 13070, M.B. 2665-31-26 & F.B. 3434-210 F.B. 3435-125



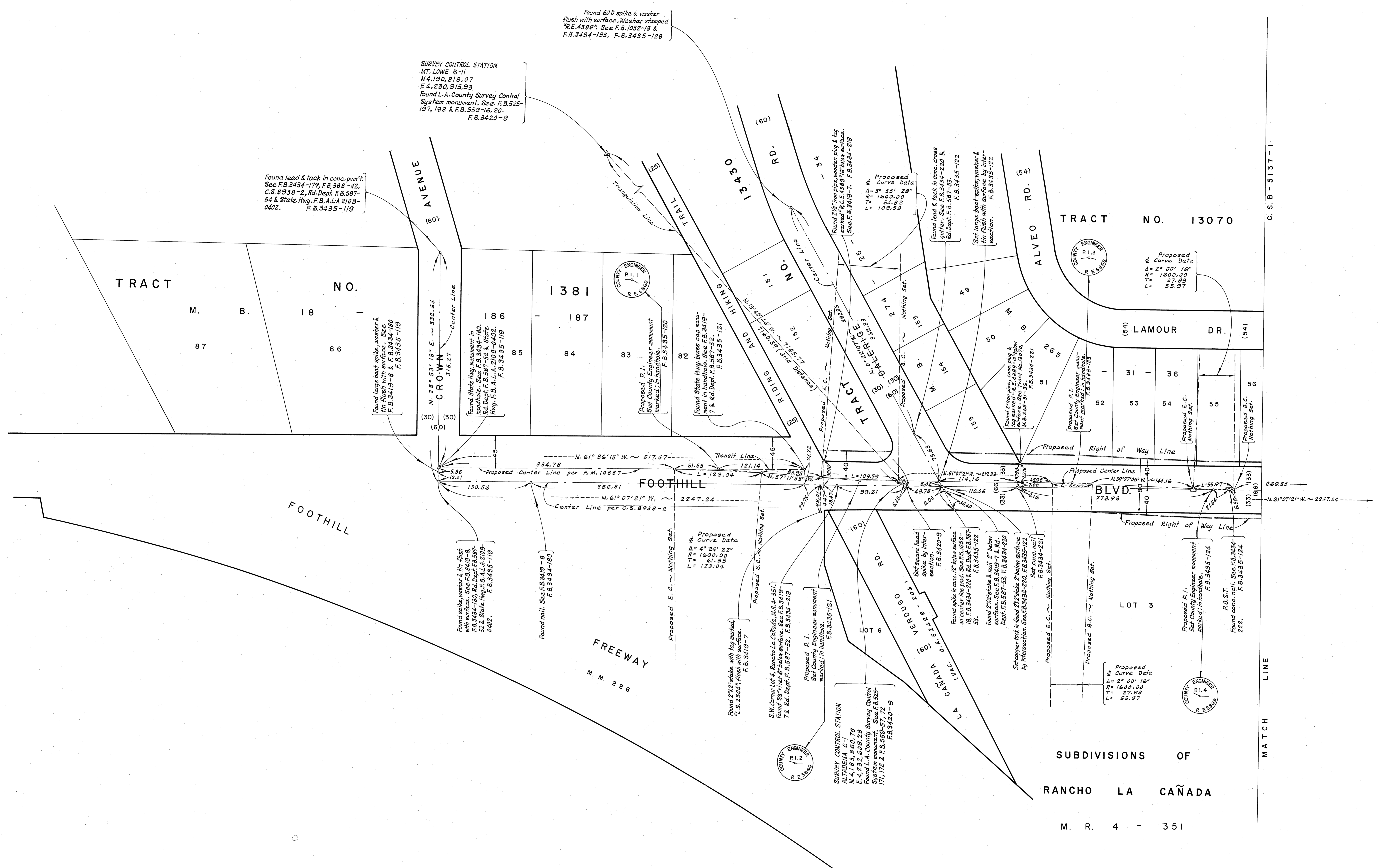
VICINITY MAP NOT TO SCALE

Found L.A. CO. Rd. Dept. monument in the center of the road. See Tract No. 13070, M.B. 2665-31-26 & F.B. 3434-210 F.B. 3435-125

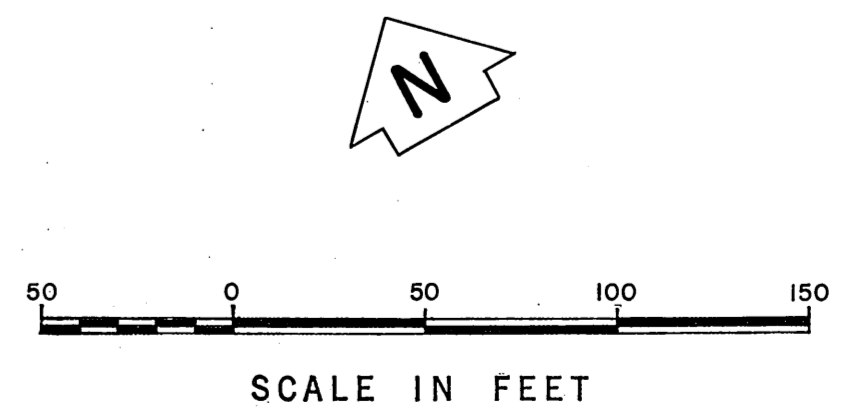
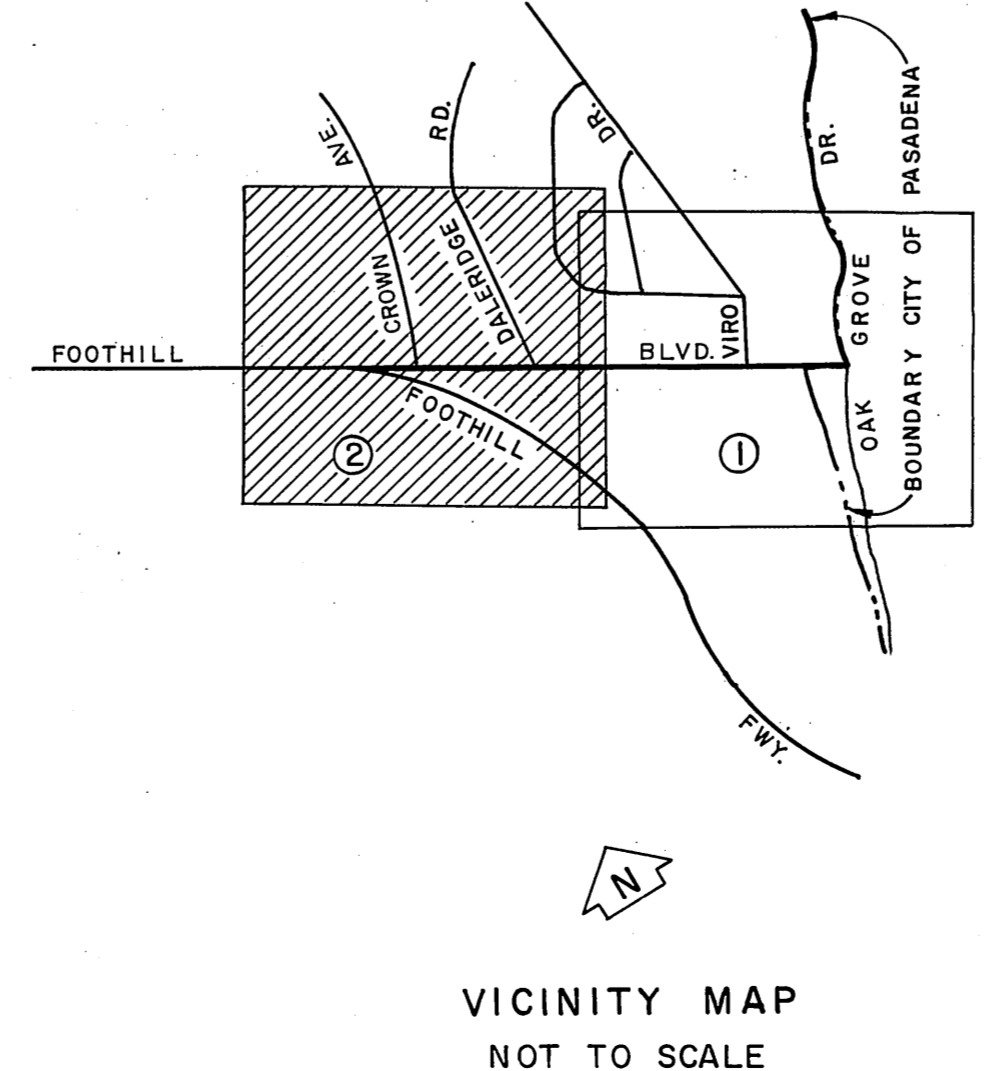
NOTE: THE ALIGNMENT OF OAK GROVE DR. FOR THE ALTERNATE HIGHWAY ALIGNMENT AS PROPOSED ON THE MASTER PLAN OF HIGHWAYS CONTACT CITY OF PASADENA, COUNTY ENGINEER



COUNTY OF LOS ANGELES DEPARTMENT OF COUNTY ENGINEER HARVEY T. BRANDY - COUNTY ENGINEER PREPARED BY SURVEY DIVISION GEORGE J. FRANCESCHINI - DIVISION ENGINEER SURVEYED BY L.L. BROWN CHECKED BY G.D. BAILEY DRAWN BY S. KURACHI, B.H. TABATA	ALIGNMENT MAP OF FOOTHILL BOULEVARD FROM OAK GROVE DRIVE TO FOOTHILL FREEWAY BASIS OF BEARINGS CALIFORNIA COORDINATE SYSTEM, ZONE 7	COUNTY SURVEYOR'S MAP NO. B-5137	REVISION NO. BY DATE ① J.S. 5-19-73
		SHEET 1 OF 2 SHEETS FILED: <u>June 10</u> 1971 DEPT. SURVEYED APRIL 1970 REFERENCE F.B. 3434 F.B. 3435 JOB NUMBER 0098.08	INDEX MAP NO. 88



REVISIONS
 © Michipan Avenue changed to Foothill Blvd. See S.N.C. No. 627



COUNTY OF LOS ANGELES DEPARTMENT OF COUNTY ENGINEER HARVEY T. BRANDT - COUNTY ENGINEER PREPARED BY SURVEY DIVISION GEORGE J. FRANCISQUINI - DIVISION ENGINEER SURVEYED BY L.L. BROWN CHECKED BY G.D. BAILEY DRAWN BY S. KURACHI, B.H. TABATA	ALIGNMENT MAP OF FOOTHILL BOULEVARD FROM OAK GROVE DRIVE TO FOOTHILL FREEWAY BASIS OF BEARINGS CALIFORNIA COORDINATE SYSTEM, ZONE 7		COUNTY SURVEYOR'S MAP NO. B-5137 SHEET 2 OF 2 SHEETS FILED: <u>JUN 10 1971</u> SURVEYED APRIL 1970 REFERENCE F.B. 3434 F.B. 3435 JOB NUMBER 0098.08	REVISION NO. BY DATE ① J.S. 9-19-79
	INDEX MAP NO. 88		INDEX MAP NO. 88	